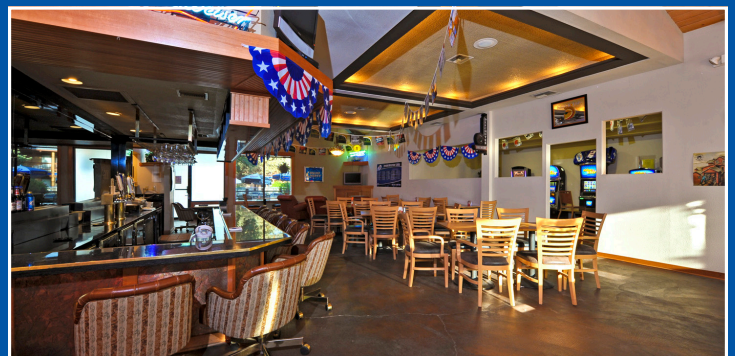


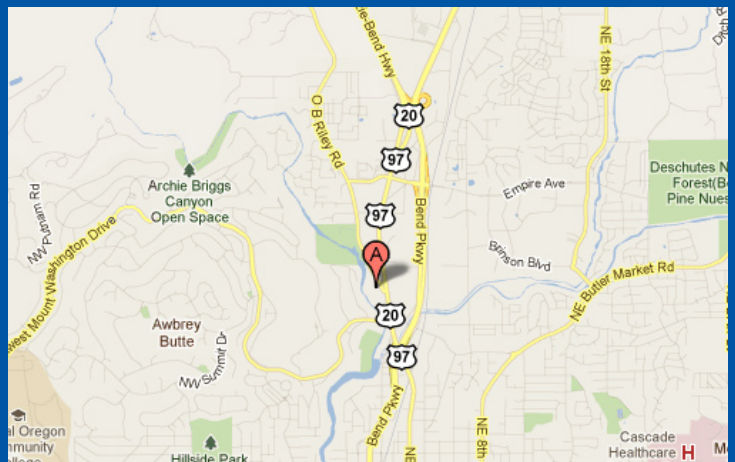
# Shilo Inn Bend Restaurant

Excellent Restaurant Lease Opportunity  
 3105 O.B. Riley Road • Bend, OR 97701



Room Name	Sq. Ft.	Dimensions	Ceiling Ht.	Banquet	Classroom	Reception	Theater
Total Ballroom	2,040	40x51	10-17	140	140	225	25
Diamond	780	10x19.5	10-17	50	50	225	25
Emerald	780	40x19.5	10	50	50	80	55
Sapphire	480	40x12	10-17	30	15	40	40
Diamond / Emerald	1,560	40x39	10-17	100	65	120	95
Emerald / Sapphire	1,260	40x31	10-17	80	65	120	95
Total River Building	1,445	17.5x82	7'8"	100	100	130	150
Ruby	350	17.5x20	7'8"	35	25	30	30
Topaz	735	17.5x42	7'8"	50	50	60	70
Opal	350	17.5x20	7'8"	25	25	30	30
Topaz / Opal	1,085	17.5x62	7'8"	75	75	90	110
<b>Total / Max Capacity</b>	<b>3,485</b>	-	-	<b>240</b>	<b>240</b>	<b>325</b>	<b>175</b>

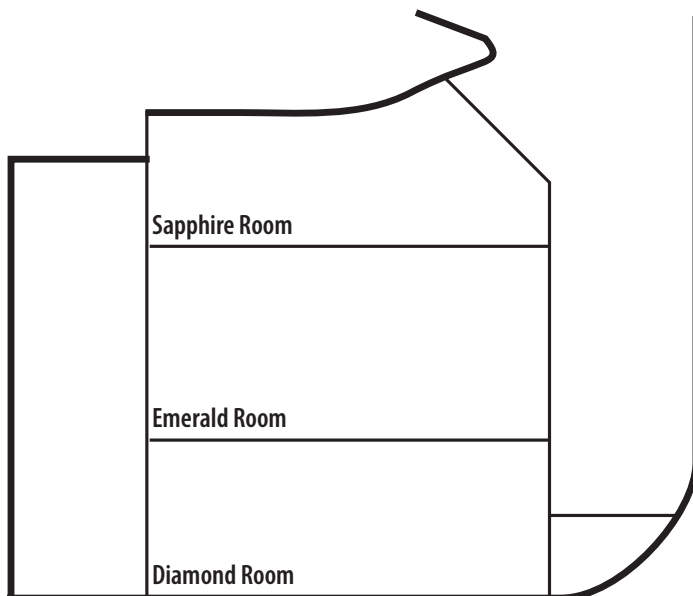
Conference Area up to 3,475 sq. ft.



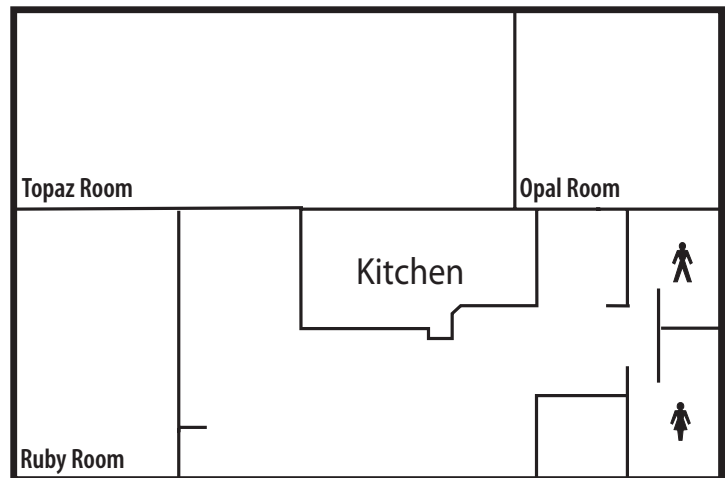
## FREE HIGH SPEED INTERNET ACCESS

Room Name	Sq. Ft.	Dimensions	Ceiling Ht.	Banquet	Classroom	Reception	Theater
Total Ballroom	2,040	40x51	10-17	140	140	225	25
Diamond	780	10x19.5	10-17	50	50	225	25
Emerald	780	40x19.5	10	50	50	80	55
Sapphire	480	40x12	10-17	30	15	40	40
Diamond / Emerald	1,560	40x39	10-17	100	65	120	95
Emerald / Sapphire	1,260	40x31	10-17	80	65	120	95
Total River Building	1,445	17.5x82	7'8"	100	100	130	150
Ruby	350	17.5x20	7'8"	35	25	30	30
Topaz	735	17.5x42	7'8"	50	50	60	70
Opal	350	17.5x20	7'8"	25	25	30	30
Topaz / Opal	1,085	17.5x62	7'8"	75	75	90	110
<b>Total / Max Capacity</b>	<b>3,485</b>	-	-	<b>240</b>	<b>240</b>	<b>325</b>	<b>175</b>

Conference Area up to 3,475 sq. ft.



Ballroom



River Building

*OTHER AUDIO/VISUAL EQUIPMENT AVAILABLE UPON REQUEST.*

- Podium
- Power Point Projector
- White Board with markers
- Overhead, slide and LCD projectors
- 6x6 and 8x8 Projection Screens
- Flipcharts and Easels
- Dance Floor
- Table Top and Floor Microphones
- Full on-site catering services
- Event Planning Coordinators
- American & Oregon Flags
- VCR / DVD player with 32" screen Televisions