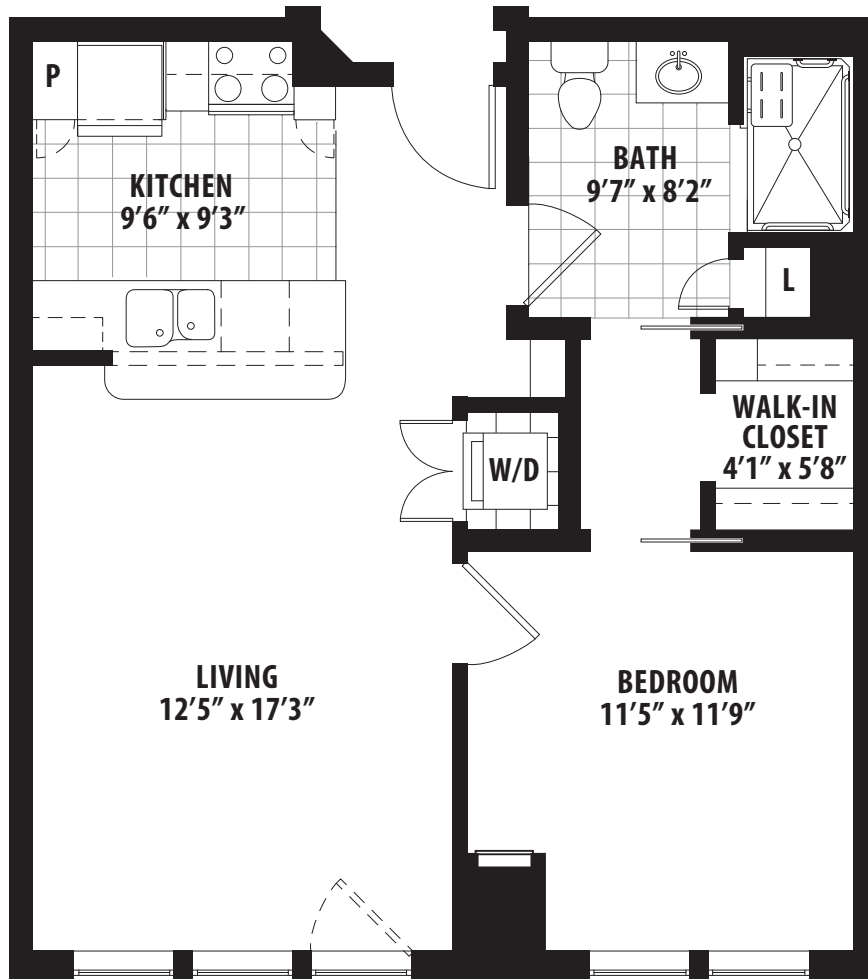


Residence # \_\_\_\_\_

Entrance Fee \$ \_\_\_\_\_

Monthly Fee \$ \_\_\_\_\_

As of this date: \_\_\_\_\_



RESIDENCE	Description	Square Feet	90% Refundable	Monthly Service Fee
			Entrance Fee Single / Double	Monthly Fee Single / Double
Apawamis	One-Bedroom	676	\$250,000 / \$333,000	\$3,460 / \$3,980

\*Size and dimensions may vary

Twenty percent of the apartments at Broadview have been designated as available to those who qualify financially within specific income requirements. Information about these financial requirements are available upon request.



# Services and Amenities



## INCLUDED IN THE MONTHLY FEE

- Intergenerational learning and mentoring opportunities – formal and informal
- The Learning Commons – a place to meet with residents, students and faculty to exchange ideas, learning and mentoring, including a studio and performance spaces, café, computer/technology lab, meeting rooms and classrooms, exhibition space
- Flexible dining options with multiple venues within Broadview
- *HealthyLife® Services* program only for residents of Broadview, including a dedicated indoor heated pool, state-of-the-art aerobic & strength training rooms, nutritional counseling, full-time fitness counselor, intellectual and well-being activities
- Services of Health Care Navigator to coordinate medical appointments, hospital stays, home health services, and help with the transition to in-home care or higher levels of care on-site for assisted living, memory care or nearby skilled nursing care should it be needed
- Walk-in Medical Clinic with expanding hours as the community fills
- Scheduled transportation to Metro-North Railroad in White Plains, shopping, medical facilities, cultural and social events
- Broadview's own state-of-the-art theater
- Library
- Scenic walking paths
- Therapeutic spa & luxurious salon
- Reserved surface parking space
- Utilities, including Wi-Fi throughout Broadview and the residences plus basic cable and phone jacks (phone service is at the discretion of the resident and paid by the resident)
- Weekly housekeeping and flat linen service
- Convenient individual storage area for each residence
- Maintenance and upkeep of all common areas and residences inside and out, including provided appliances
- 24-hour security
- Emergency call system

## PURCHASE COLLEGE AMENITIES

- Neuberger Museum of Art
- Performing Arts Center
- Art galleries
- Performance spaces
- Purchase College library
- Lecture series
- Access to student and faculty performances
- College sporting events
- Audit classes with students – as space is available
- Faculty-led travel programs
- Mentoring & teaching opportunities
- Being involved in a vibrant college campus



6 International Drive, Suite 120, Rye Brook, NY 10573  
914-417-4201 | [BroadviewSeniorLiving.org](http://BroadviewSeniorLiving.org)

Developed by LCSD/SCD Partners, LLC  
Sponsor: Purchase Senior Learning Community Inc.

