

# R O W A N

## Anya

by Marie Wallin



### SIZE

	8	10	12	14	16	18	20	22	
To fit bust	82	87	92	97	102	107	112	117	cm
	32	34	36	38	40	42	44	46	in

### YARN

#### Rowan Kid Classic, Kidsilk Haze and Shimmer

A Kid Classic Smoke 831	4	5	5	5	5	5	6	6	x 50gm
B *Kidsilk Haze Smoke 605	2	2	2	2	3	3	3	3	x 25gm
C *Kidsilk Haze Wicked 599	2	2	3	3	3	3	3	3	x 25gm
D *Kidsilk Haze Pearl 590	1	1	1	1	1	1	1	1	x 25gm
E *Shimmer Titanium 093	1	1	1	1	1	1	1	1	x 25gm

\*Use Kidsilk Haze and Shimmer DOUBLE throughout.

### NEEDLES

1 pair 3 $\frac{3}{4}$ mm (no 9) (US 5) needles  
 1 pair 4mm (no 8) (US 6) needles  
 Cable needle

**BEADS** – GB7 Glass Beads, approx 220 [220: 230: 240: 260: 260: 280: 280] x col. 10 Grey, 510 [530: 550: 570: 600: 620: 650: 670] x col. 3 Gunmetal and 110 [120: 120: 130: 130: 140: 140: 150] x col. 6 Black faceted beads. All from Creative Bead Craft Ltd.

### TENSION

24 sts and 27 rows to 10 cm measured over patterned stocking stitch using 4mm (US 6) needles.

### SPECIAL ABBREVIATIONS

**C2B** = slip next st onto cable needle and leave at back of work, K1, then K1 from cable needle; **C2F** = slip next st onto cable needle and leave at front of work, K1, then K1 from cable needle; **Cr2R** = slip next st onto cable needle and leave at back of work, K1, then P1 from cable needle; **Cr2L** = slip next st onto cable needle and leave at front of work, P1, then K1 from cable needle; **bead 1** = place a bead by bringing yarn to front (RS) of work and slipping bead up next to st just worked, slip next st purlwise from left needle to right needle and take yarn back to back (WS) of work, leaving bead sitting in front of slipped st on RS.

**Beading note:** Before starting to knit, thread beads onto yarn. To do this, thread a fine sewing needle (one that will easily pass through the beads) with sewing thread. Knot ends of thread and then pass end of yarn through this loop. Thread a bead onto sewing thread and then gently slide it along and onto knitting yarn. Continue in this way until required number of beads are on yarn. Do not place beads on edge sts of rows as this will interfere with sewing-up.

### BACK and FRONT (both alike)

Using 3 $\frac{3}{4}$ mm (US 5) needles and yarn A cast on 102 [106: 110: 118: 126: 132: 140: 146] sts.

**Row 1 (RS):** K1 [3: 0: 0: 0: 0: 2: 0], P2 [2: 0: 2: 0: 0: 2: 0], K2 [2: 0: 2: 0: 2: 2: 0], P1 [1: 1: 1: 0: 1: 1: 1], \*P1, K2, P3, C2B, P2, C2B, P3, K2, P1, rep from \* to last 6 [8: 1: 5: 0: 3: 7: 1] sts, P1 [1: 1: 1: 0: 1: 1: 1], K2 [2: 0: 2: 0: 2: 2: 0], P2 [2: 0: 2: 0: 0: 2: 0], K1 [3: 0: 0: 0: 0: 2: 0].

**Row 2:** P1 [3: 0: 0: 0: 0: 2: 0], K2 [2: 0: 2: 0: 0: 2: 0], P2 [2: 0: 2: 0: 2: 2: 0], K1 [1: 1: 1: 0: 1: 1: 1], \*K1, P2, K3, P2, K2, P2, K3, P2, K1, rep from \* to last 6 [8: 1: 5: 0: 3: 7: 1] sts, K1 [1: 1:

1: 0: 1: 1: 1], P2 [2: 0: 2: 0: 2: 2: 0], K2 [2: 0: 2: 0: 0: 2: 0], P1 [3: 0: 0: 0: 0: 2: 0].

**Row 3:** K1 [3: 0: 0: 0: 0: 2: 0], P2 [2: 0: 2: 0: 0: 2: 0], K2 [2: 0: 2: 0: 2: 2: 0], P1 [1: 1: 1: 0: 1: 1: 1], \*P1, K2, P2, (Cr2R, Cr2L) twice, P2, K2, P1, rep from \* to last 6 [8: 1: 5: 0: 3: 7: 1] sts, P1 [1: 1: 1: 0: 1: 1: 1], K2 [2: 0: 2: 0: 2: 2: 0], P2 [2: 0: 2: 0: 0: 2: 0], K1 [3: 0: 0: 0: 0: 2: 0].

**Row 4:** P1 [3: 0: 0: 0: 0: 2: 0], K2 [2: 0: 2: 0: 0: 2: 0], P2 [2: 0: 2: 0: 2: 2: 0], K1 [1: 1: 1: 0: 1: 1: 1], \*K1, P2, K2, P1, K2, P2, K2, P1, K2, P2, K1, rep from \* to last 6 [8: 1: 5: 0: 3: 7: 1] sts, K1 [1: 1: 1: 0: 1: 1: 1], P2 [2: 0: 2: 0: 2: 2: 0], K2 [2: 0: 2: 0: 0: 2: 0], P1 [3: 0: 0: 0: 0: 2: 0].

**Row 5:** K1 [3: 0: 0: 0: 0: 2: 0], P2 [2: 0: 2: 0: 0: 2: 0], K2 [2: 0: 2: 0: 2: 2: 0], P1 [1: 1: 1: 0: 1: 1: 1], \*P1, K2, P2, K1, P2, C2F, P2, K1, P2, K2, P1, rep from \* to last 6 [8: 1: 5: 0: 3: 7: 1] sts, P1 [1: 1: 1: 0: 1: 1: 1], K2 [2: 0: 2: 0: 2: 2: 0], P2 [2: 0: 2: 0: 0: 2: 0], K1 [3: 0: 0: 0: 0: 2: 0].

**Row 6:** As row 4.

**Row 7:** K1 [3: 0: 0: 0: 0: 2: 0], P2 [2: 0: 2: 0: 0: 2: 0], K2 [2: 0: 2: 0: 2: 2: 0], P1 [1: 1: 1: 0: 1: 1: 1], \*P1, K2, P2, (Cr2L, Cr2R) twice, P2, K2, P1, rep from \* to last 6 [8: 1: 5: 0: 3: 7: 1] sts, P1 [1: 1: 1: 0: 1: 1: 1], K2 [2: 0: 2: 0: 2: 2: 0], P2 [2: 0: 2: 0: 0: 2: 0], K1 [3: 0: 0: 0: 0: 2: 0].

**Row 8:** As row 2.

**Rows 9 to 16:** As rows 1 to 8.

Change to 4mm (US 6) needles.

Beg with a K row, work in st st for 2 rows, inc 1 st at beg of first of these rows and ending with RS facing for next row.

103 [107: 111: 119: 127: 133: 141: 147] sts.

Beg and ending rows as indicated, using the **fairisle** technique as described on the information page, and working chart rows 1 to 106 once only and then repeating chart rows 107 and 108 throughout, work from chart as follows:

Cont in patt until work meas 39 [39: 38: 41: 40: 42: 41: 43] cm, ending with RS facing for next row.

### Shape armholes

(**Note:** armhole shaping is **NOT** shown on chart.)

Keeping patt correct, cast off 4 [5: 5: 6: 6: 7: 7: 8] sts at beg of next 2 rows.

95 [97: 101: 107: 115: 119: 127: 131] sts.

Dec 1 st at each end of next 5 [5: 7: 7: 9: 9: 11: 11] rows, then on foll 2 [2: 1: 2: 2: 2: 3] alt rows, then on foll 4th row.

79 [81: 83: 87: 91: 95: 99: 101] sts.

Cont straight until armhole meas 21 [21: 22: 22: 23: 23: 24: 24] cm, ending with RS facing for next row.

### Shape shoulders

Cast off 6 [6: 6: 7: 7: 8: 9: 9] sts at beg of next 4 rows, then 5 [6: 7: 7: 8: 8: 8: 9] sts at beg of foll 2 rows. 45 [45: 45: 45: 47: 47: 47: 47] sts.

### Shape funnel neck

Change to 3¼mm (US 5) needles.

Work a further 27 rows on these 45 [45: 45: 45: 47: 47: 47: 47] sts only, ending with **WS** facing for next row.

Using a 4mm (US 6) needle, cast off in patt (on **WS**).

## SLEEVES

Using 3¼mm (US 5) needles and yarn A cast on 58 [58: 60: 60: 62: 62: 64: 64] sts.

**Row 1 (RS):** P0 [0: 0: 0: 1: 1: 2: 2], K1 [1: 2: 2: 2: 2: 2: 2], P1, \*P1, K2, P3, C2B, P2, C2B, P3, K2, P1, rep from \* to last 2 [2: 3: 3: 4: 4: 5: 5] sts, P1, K1 [1: 2: 2: 2: 2: 2: 2], P0 [0: 0: 0: 1: 1: 2: 2].

**Row 2:** K0 [0: 0: 0: 1: 1: 2: 2], P1 [1: 2: 2: 2: 2: 2: 2], K1, \*K1, P2, K3, P2, K2, P2, K3, P2, K1, rep from \* to last 2 [2: 3: 3: 4: 4: 5: 5] sts, K1, P1 [1: 2: 2: 2: 2: 2: 2], K0 [0: 0: 0: 1: 1: 2: 2].

**Row 3:** P0 [0: 0: 0: 1: 1: 2: 2], K1 [1: 2: 2: 2: 2: 2: 2], P1, \*P1, K2, P2, (Cr2R, Cr2L) twice, P2, K2, P1, rep from \* to last 2 [2: 3: 3: 4: 4: 5: 5] sts, P1, K1 [1: 2: 2: 2: 2: 2: 2], P0 [0: 0: 0: 1: 1: 2: 2].

**Row 4:** K0 [0: 0: 0: 1: 1: 2: 2], P1 [1: 2: 2: 2: 2: 2: 2], K1, \*K1, P2, K2, P1, K2, P2, K2, P1, K2, P2, K1, rep from \* to last 2 [2: 3: 3: 4: 4: 5: 5] sts, K1, P1 [1: 2: 2: 2: 2: 2: 2], K0 [0: 0: 0: 1: 1: 2: 2].

**Row 5:** P0 [0: 0: 0: 1: 1: 2: 2], K1 [1: 2: 2: 2: 2: 2: 2], P1, \*P1, K2, P2, K1, P2, C2F, P2, K1, P2, K2, P1, rep from \* to last 2 [2: 3: 3: 4: 4: 5: 5] sts, P1, K1 [1: 2: 2: 2: 2: 2: 2], P0 [0: 0: 0: 1: 1: 2: 2].

**Row 6:** As row 4.

**Row 7:** P0 [0: 0: 0: 1: 1: 2: 2], K1 [1: 2: 2: 2: 2: 2: 2], P1, \*P1, K2, P2, (Cr2L, Cr2R) twice, P2, K2, P1, rep from \* to last 2 [2: 3: 3: 4: 4: 5: 5] sts, P1, K1 [1: 2: 2: 2: 2: 2: 2], P0 [0: 0: 0: 1: 1: 2: 2].

**Row 8:** As row 2.

**Rows 9 to 16:** As rows 1 to 8.

Change to 4mm (US 6) needles.

Beg with a K row, work in st st for 2 rows, inc 1 st at beg of first of these rows and ending with RS facing for next row.

59 [59: 61: 61: 63: 63: 65: 65] sts.

**Row 19 (RS):** K1, \*P1, K1, rep from \* to end.

**Row 20:** As row 19.

These 2 rows form moss st.

Cont in moss st, inc 1 st at each end of 3rd [3rd: 3rd: next: next: next: next: next] and foll 0 [0: 8th: 6th: 6th: 6th: 6th: 0] row.

61 [61: 65: 65: 67: 67: 69: 67] sts.

Work 7 [7: 3: 1: 5: 1: 1: 3] rows, ending with RS facing for next row. (12 [12: 16: 10: 14: 10: 10: 6] rows of moss st completed.)

Beg and ending rows as indicated, work from chart as follows:

Inc 1 st at each end of next [next: 5th: 5th: 3rd: 5th: 5th: 3rd] and every foll 8th [8th: 8th: 8th: 8th: 6th: 6th: 6th] row to 71 [81: 81: 85: 87: 75: 79: 87] sts, then on every foll 10th [-: 10th: -: -: 8th: 8th: 8th] row until there are 79 [-: 83: -: -: 89: 91: 93] sts, taking inc sts into patt.

Cont straight until sleeve meas approx 44 [44: 45: 45: 46: 46: 45: 45] cm, ending after same chart row as on back and front to armhole shaping and with RS facing for next row.

### Shape top

(**Note:** sleeve top shaping is **NOT** shown on chart.)

Keeping patt correct, cast off 4 [5: 5: 6: 6: 7: 7: 8] sts at beg of next 2 rows.

71 [71: 73: 73: 75: 75: 77: 77] sts.

Dec 1 st at each end of next 3 rows, then on foll alt row, then on every foll 4th row until

53 [53: 55: 55: 57: 57: 59: 59] sts rem.

Work 1 row.

Dec 1 st at each end of next and every foll alt row to 47 sts, then on foll 3 rows, ending with RS facing for next row. 41 sts.

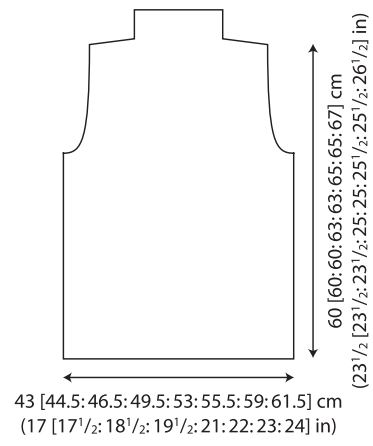
Cast off 8 sts at beg of next 2 rows.

Cast off rem 25 sts.

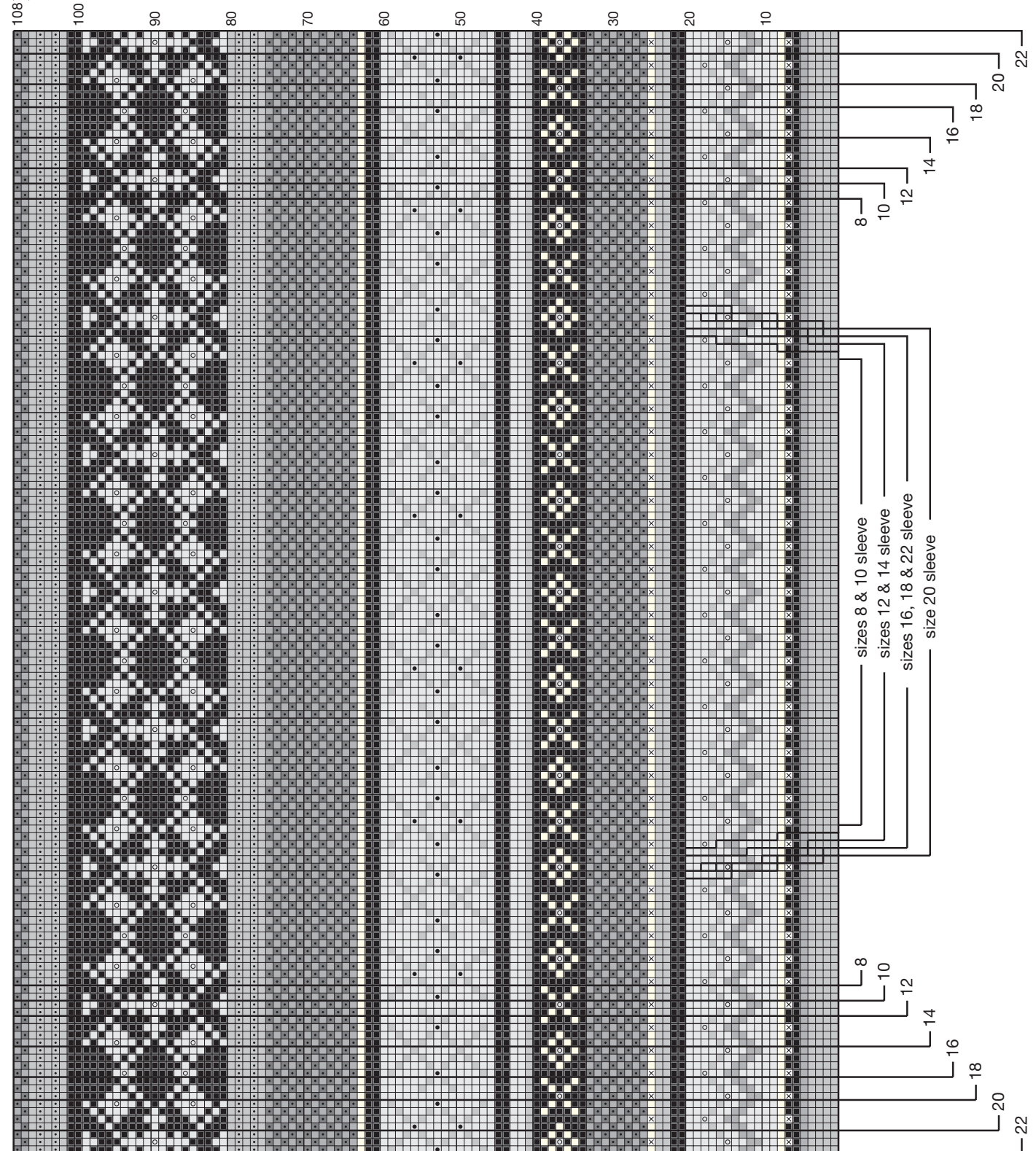
## MAKING UP

Press as described on the information page.

Join shoulder and funnel neck seams using back stitch, or mattress stitch if preferred.  
See information page for finishing instructions, setting in sleeves using the set-in method.



108 } 2 row  
patt rep



All right reserved. Reproduction in whole or any part of all material, including illustrations, in this brochure is strictly forbidden. No part may be reproduced, stored in a retrieval system, or transmitted in any form or by any means electronic, electrostatic, magnetic tape, mechanical, photocopying, recording or otherwise without prior permission of the copyright owners having been given in writing. The designs in this brochure are copyrighted and must not be knitted for re-sale. Reproduction of this publication is protected by copyright and is sold on the condition that it is used for non-commercial purposes. Yarn quantities are approximate as they are based on average requirements. Colour reproduction is as close as printing will allow.

First published in Great Britain in 2011 by Rowan Yarns Ltd, Green Lane Mill, Holmfirth, West Yorkshire, England, HD9 2DX Internet: www.knitrowan.com Email: mail@knitrowan.com © Copyright Rowan 2011