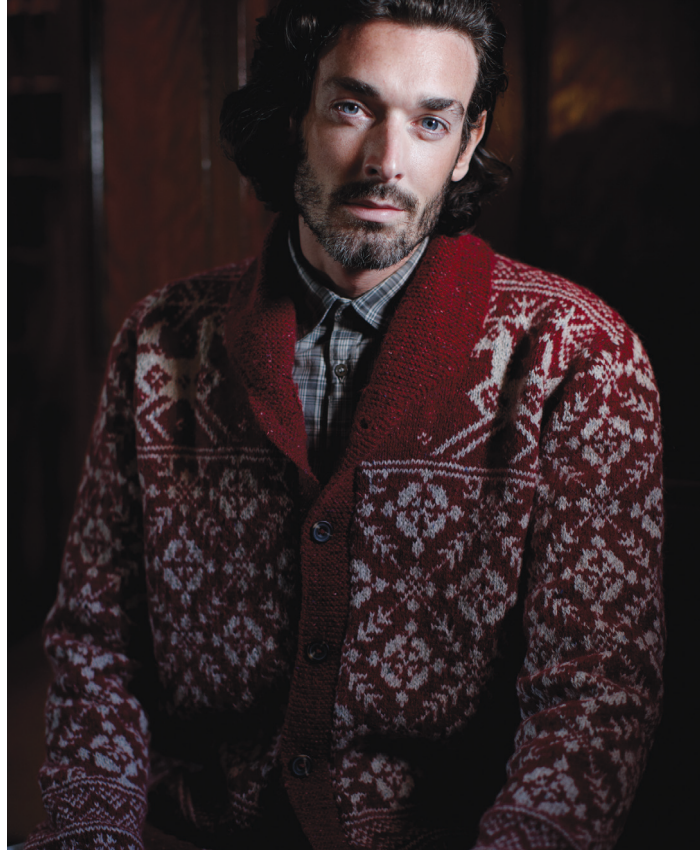




# Mens Reindeer Cardigan

by Martin Storey



## SIZE

S	M	L	XL	XXL	2XL	
To fit chest						
102	107	112	117	122	127	cm
40	42	44	46	48	50	in

## YARN

Rowan Felted Tweed

A Rage 150

9 10 11 11 12 13 x 50gm

B Clay 177

5 5 5 6 7 7 x 50gm

## NEEDLES

1 pair 3¾mm (no 9) (US 5) needles

1 pair 3¾mm (no 10) (US 3) needles

## BUTTONS 6

## TENSION

26½ sts and 26 rows to 10 cm measured over patt using 3¾mm (no 9) (US 5) needles

## BACK

Using 3¾mm (US 3) needles and yarn A, cast on 147 [153: 165: 171: 177: 189] sts.

**Row 1 (RS):** \* K3, P3, rep from \* to last st, K3.

**Row 2:** \* P3, K3, rep from \* to last st, P3.

These 2 rows form rib.

Work 24 rows more in rib, inc 2 [4: -: 2: 4: -] sts evenly across last row and ending with RS facing for next row.

149 [157: 165: 173: 181: 189] sts.

Change to 3¾mm (US 5) needles.

Beg and ending rows as indicated, using the **fairisle** and **intarsia** techniques as described on the information page, now work in patt from chart as follows:-

Cont straight until chart row 102 has been worked. (Back should meas approximately 47 cm).

### Shape armholes

Keeping patt correct cast off 7 [10: 11: 11: 13: 15] sts at beg of next 2 rows.

135 [137: 143: 151: 155: 159] sts.

Dec 1 st at each end of next 5 [5: 5: 9: 9: 9] rows then on 6 [5: 5: 4: 4: 4] foll alt rows, then 1 [2: 2: 2: 2: 2] foll 4<sup>th</sup> rows. 111 [113: 119: 121: 125: 129] sts.

Cont straight until chart row 160 [162: 164: 168: 170: 172] has been worked, ending with RS facing for next row. (Armholes should meas approximately 22 [23: 24: 25: 26: 27] cm).

### Shape shoulders

Cast off 11 [11: 12: 12: 13: 13] sts at beg of next 2 rows.

89 [91: 95: 97: 99: 103] sts.

**Next Row:** Cast off 11 [12: 12: 13: 13: 14] sts, patt until there are 16 [16: 17: 17: 17: 18] sts on right needle, turn and leave rem sts on a holder.

Work each side of neck separately.

**Next Row:** Cast off 4 sts in patt, patt to end.

Cast off rem 12 [12: 13: 13: 13: 14] sts in patt.

With RS facing rejoin yarns to rem sts left on a stitch holder, cast off centre 35 [35: 37: 37: 39: 39] sts, patt to end.

Complete to match first side reversing shapings.

## LEFT FRONT

Using 3¾mm (US 3) needles and yarn A, cast on 75 [81: 81: 87: 93: 93] sts.

Work 26 rows in rib as given for back - [dec: inc: -: dec: inc] - [2: 2: -: 2: 2] sts evenly across last row and ending with RS facing for next row. 75 [79: 83: 87: 91: 95] sts.

Change to 3/4mm (US 5) needles.

Beg and ending rows as indicated, work in patt from chart for left front as follows:

Cont straight until chart row 102 has been worked.

### Shape armhole

**Next row:** Keeping patt correct cast off 7 [10: 11: 11: 13: 15] sts, patt to end.

68 [69: 72: 76: 78: 80] sts.

Work 1 row.

Dec 1 st at armhole edge of next 5 [5: 5: 9: 9: 9] rows then on 6 [5: 5: 4: 4: 4] foll alt rows, then 1 [2: 2: 2: 2: 2] foll 4<sup>th</sup> rows. 56 [57: 60: 61: 63: 65] sts.

Work 1 [1: 1: 1: 1: 3] rows more, ending with **WS** facing for next row.

### Shape neck

**Next row (WS):** Keeping patt correct, cast off 5 sts, patt to end. 51 [52: 55: 56: 58: 60] sts.

Dec 1 st at neck edge in next 3 rows, then 14 [14: 15: 15: 16: 16] foll alt rows. 34 [35: 37: 38: 39: 41] sts.

Cont straight until left front matches back to beg of shoulder shaping, ending with RS facing for next row.

### Shape shoulder

Cast off 11 [11: 12: 12: 13: 13] sts at beg of next row and 11 [12: 12: 13: 13: 14] sts at beg of foll alt row.

Work 1 row.

Cast off rem 12 [12: 13: 13: 13: 14] sts.

## RIGHT FRONT

Work as given for left front reversing shapings

## SLEEVES (both alike)

Using 3/4mm (US 3) needles and yarn A, cast on 63 [63: 69: 69: 69: 75] sts.

Work 26 rows in rib as given for back dec [-: dec: -: inc: -] 2 [-: 2: -: 2: -] sts evenly across last of these rows and ending with RS facing for next row. 61 [63: 67: 69: 71: 75] sts.

Change to 3/4mm (US 5) needles.

Beg and ending rows as indicated, working rows 1 to 28 once, then rep rows 29-60 throughout, work in patt from chart for sleeves as follows:

Cont in patt shaping sides by inc 1 st at each end of 5<sup>th</sup> [5<sup>th</sup>: 5<sup>th</sup>: 3<sup>rd</sup>: 3<sup>rd</sup>] and every foll 4<sup>th</sup> [4<sup>th</sup>: 4<sup>th</sup>: 4<sup>th</sup>: 2<sup>nd</sup>: 2<sup>nd</sup>] row to 101 [107: 113: 119: 75: 81] sts, then every foll 6<sup>th</sup> [6<sup>th</sup>: 6<sup>th</sup>: 6<sup>th</sup>: 4<sup>th</sup>: 4<sup>th</sup>] row to 107 [111: 117: 121: 127: 133] sts, working inc sts in patt.

Cont straight until sleeve meas 51 [52: 53: 54: 55: 56] cm, ending with RS facing for next row.

### Shape sleeve top

Keeping patt correct, cast off 7 [10: 11: 11: 13: 15] sts at beg of next 2 rows. 93 [91: 95: 99: 101: 103] sts.

Dec 1 st at each end of next 5 rows, then on 5 foll alt rows, then on 1 [2: 2: 2: 3: 3] foll 4<sup>th</sup> rows, then 3 [3: 3: 3: 3: 4] foll alt rows, then every row to 47 sts.

Cast off 5 sts at beg of next 4 rows. 27 sts.

Cast off rem 27 sts.

## MAKING UP

Press as described on the information page.

Join shoulder seams.

Place a marker at centre of back neck.

### Right front border

Using 3/4mm (US 3) needles and yarn A, cast on 11 sts.

**Row 1(RS):** Knit.

This row forms g st.

Cont in g st until border, when slightly stretched, fits up right front opening edge to start of neck shaping, sewing in place as you go and ending with RS facing for next row. Cast off. Mark positions for 6 buttons on this border, the first to come 2.5cm up from lower edge, the last to come 2.5cm below top of border and the rem 4 to spaced evenly between.

### Left front border

Work to match right front border with the addition of 6 buttonholes to match positions marked as follows:

**Buttonhole row (RS):** K4, cast off 3 sts (to make buttonhole - cast on 3 sts over these cast off sts on next row), K to end.

### Collar

Using 3/4mm (US 3) needles and yarn A, cast on 11 sts.

**Row 1(RS):** Knit.

**Row 2(inner edge):** K1, inc in next st, K to last 3 sts, inc in next st, K2.

Rep last 2 rows 9 times more. 31 sts.

Work 1 row.

**Next row (WS):** K1, inc in next st, K to end.

Rep last 2 rows 7 times more. 39 sts.

Place marker at end of last row.

Cont straight until collar fits to back neck marker, ending with RS facing for next row.

Place a second marker at end of last row.

Work same number of row between collar markers, ending with **WS** facing for next row.

**Next row(inner edge):** K1, K2tog, K to end.

Rep last 2 rows 7 times. 31 sts.

**Next row:** K1, K2tog, K to last 3 sts, K2tog, k1.

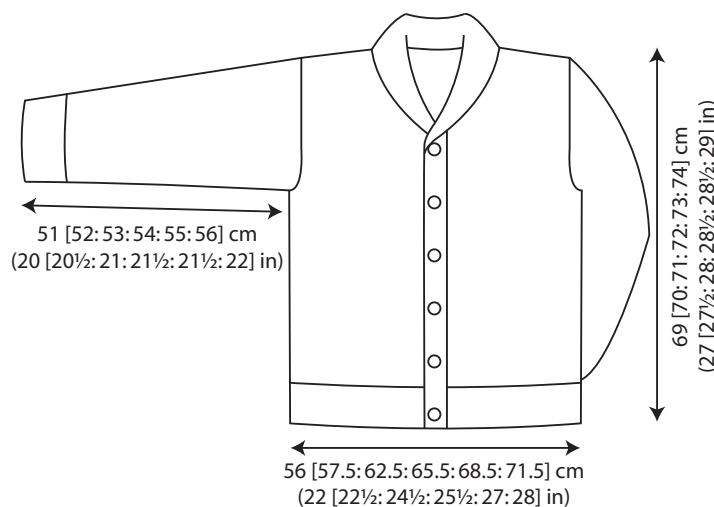
**Next row:** Knit.

Rep last 2 rows 9 times. 11 sts.

Cast off.

Sew collar in position joining inner edge of collar to neck edge. Sew cast-on and cast-off edges of collar to top of front borders.

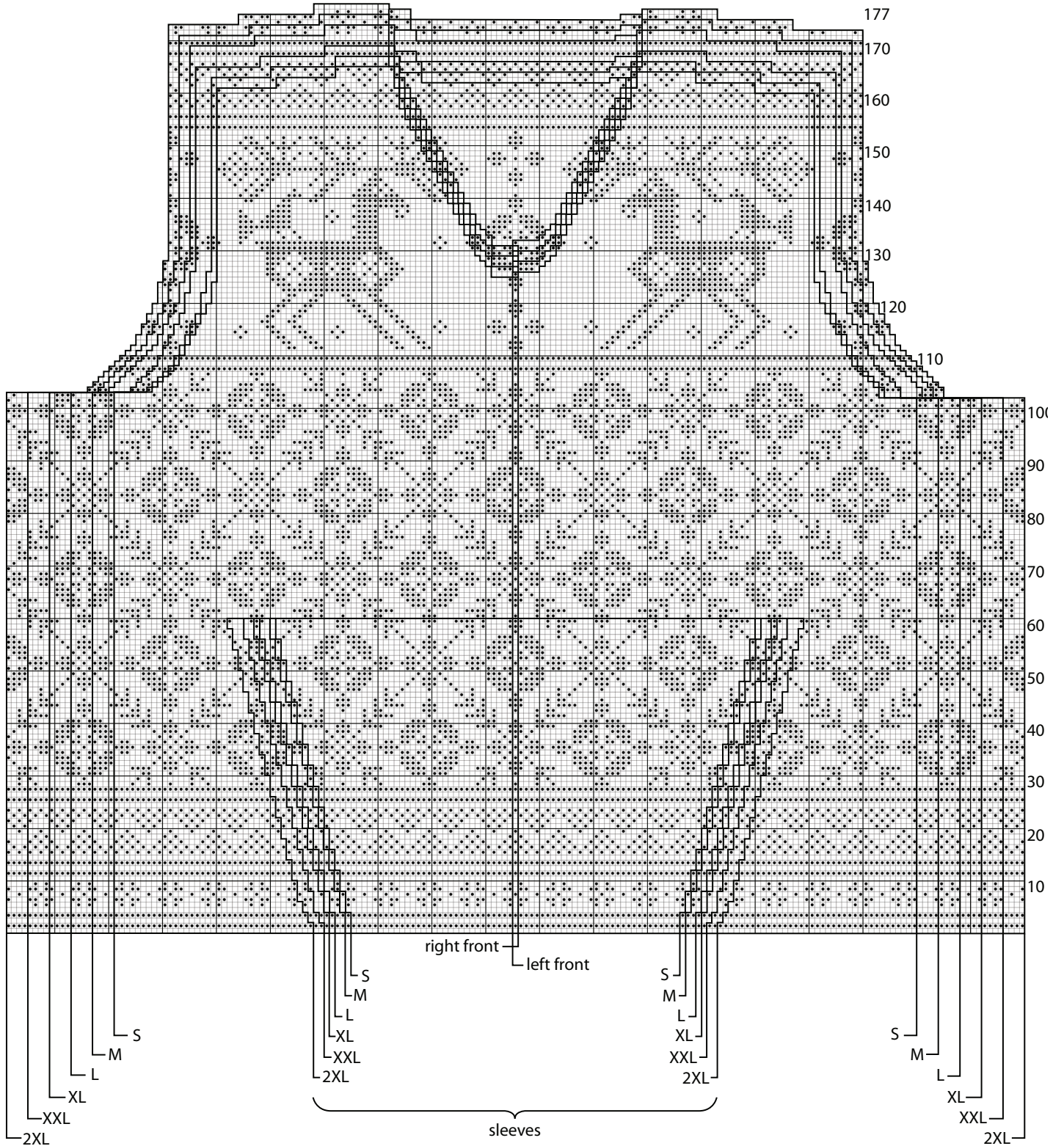
See information page for finishing instructions setting in sleeves using the set-in method.



key

□ K on RS, P on WS using yarn A

● K on RS, P on WS using yarn B



All right reserved. Reproduction in whole or any part of all material, including illustrations, in this brochure is strictly forbidden. No part may be reproduced, stored in a retrieval system, or transmitted in any form or by any means electronic, electrostatic, magnetic tape, mechanical, photocopying, recording or otherwise without prior permission of the copyright owners having been given in writing. The designs in this brochure are copyrighted and must not be knitted for re-sale. Reproduction of this publication is protected by copyright and is sold on the condition that it is used for non-commercial purposes. Yarn quantities are approximate as they are based on average requirements. Colour reproduction is as close as printing will allow.

First published in Great Britain in 2011 by Rowan Yarns Ltd, Green Lane Mill, Holmfirth, West Yorkshire, England, HD9 2DX Internet: [www.knitrowan.com](http://www.knitrowan.com) Email: [mail@knitrowan.com](mailto:mail@knitrowan.com) © Copyright Rowan 2011

