

Ashley

Euroflax - 100% Wet Spun Linen Pattern

make it your own™



l o u e t

north america

Fine / Sport Weight
machine washable & dryable

Pattern Design by Trudy Van Stralen

knittingdaily  TV

Ashley

Euroflax - 100% Wet Spun Linen Pattern

Knitting Pattern Specifications & Instructions

Colors	A	B	C	D
Skeins Needed - Tapered Skirt	4	2	2	2
Skeins Needed - Short Skirt	3	1	1	1

Finished Sizes (in inches)

Finished Size	36 inch waist before elastic
Tapered Skirt	24 inches long at back, 18 inches at front
Short Skirt	14 inches long

Yarn Requirements

Euroflax 100% Wet Spun Linen

Fine / Sport Weight

100 gram skeins (270 yds)

Needles and Materials

2.5 mm circular needle (60 cm)

3.0 mm circular needle (60 or 80 cm)

3.75 mm circular needle (60 cm)

1 inch wide elastic for waistband

Gauge

20 sts & 32 rows = 4 inches in stockinette st on 3.0 mm needle.

IMPORTANT - You must machine wash and dry sample before measuring gauge.

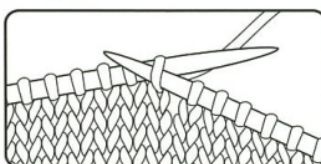
Abbreviations

K:	knit.
P:	purl.
K2tog:	knit 2 together.
M1:	Make 1 increase

Special Instructions

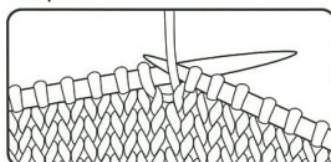
Short rowing Knit row

Step 1



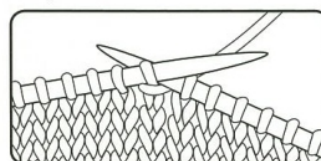
With yarn in back, slip next st purlwise.

Step 2



Bring yarn around slipped st to front of work.

Step 3



Slip the wrapped st back to left needle, bringing the yarn to back of work. Turn.

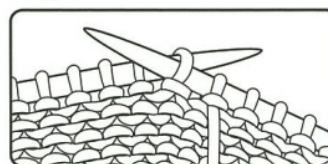
Knit row return



1. Work to just before the wrapped st.
2. Insert right needle into wrap from front to back and knit together with the wrapped st.

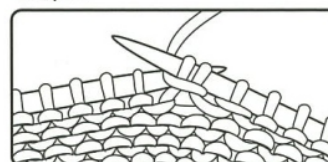
Short rowing Purl row

Step 1



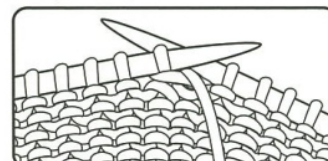
With the yarn in front, slip next st purlwise.

Step 2



Bring yarn around slipped st to back of work.

Step 3



Slip the wrapped st back to left needle, bringing the yarn to front of work. Turn.

Purl row return



1. Work to just before the wrapped st.
2. Insert right needle from back to front into the back of the wrap, purl it together with the st on needle.

Short and sassy or tapered elegance describes this pleated skirt. Both versions are knit from side to side, using short-rows and double wrapped stitches to form the pleats. The skirt is started with a crochet cast-on then grafted together to finish, to create a seamless look. The waistband is then picked up and knit along the top edge.

Pattern Design by
Trudy Van Stralen

Instructions are written for one size.

Please read over all instructions before beginning to knit.

Stripe Patterns

Color A 1 (marker remains in place throughout)

Row 1 (RS): K25, *place marker*, knit, wrapping yarn around needle twice, until 1 st remains, K1.

Rows 2 & 6: K1, purl to marker dropping any extra wraps, wrap and turn, knit to end.

Rows 3 & 5: K1, purl to 10 sts before marker, wrap and turn, knit to end.

Row 4: K1, purl to 20 sts before marker, wrap and turn, knit to end.

Row 7 (WS): K1, purl, picking up wraps.

Row 8 (RS): Knit.

Row 9 (WS): K1, purl to marker wrapping yarn around needle twice, purl to end.

Colors B, C & D

Row 1 (RS): Knit, dropping extra wraps.

Rows 2 & 13: Knit to marker, wrap & turn, purl until 1 st remains, K1.

Rows 3 & 12: Knit to 5 sts before marker, wrap and turn, purl until 1 st remains, K1.

Rows 4 & 11: Knit to 10 sts before marker, wrap and turn, purl until 1 st remains, K1.

Rows 5 & 10: Knit to 20 sts before marker, wrap and turn, purl until 1 st remains, K1.

Rows 6 & 9: Knit to 30 sts before marker, wrap and turn, purl until 1 st remains, K1.

Row 7 (WS): Knit, picking up wraps.

Row 8 (RS): Purl to last st, K1.

Row 14 (WS): Knit, picking up wraps.

Color A 2 (Decreasing stripe)

Row 1 (RS): Knit to marker, knit, wrapping yarn around needle twice, until 1 st remains, K1.

Rows 2 & 6: K1, purl to marker, dropping any extra wraps, wrap and turn, knit until 3 sts remain, K2tog, K1.

Rows 3 & 5: K1, purl to 10 sts before marker, wrap and turn, knit to end.

Row 4: K1, purl to 20 sts before marker, wrap and turn, knit to end.

Row 7 (WS): K1, purl, picking up wraps.

Row 8 (RS): Knit.

Row 9 (WS): K1, purl to marker wrapping yarn around needle twice, purl to end.

Color A 3 (Increasing stripe)

Row 1 (RS): Knit to marker, knit, wrapping yarn around needle twice, until 1 st remains, K1.

Rows 2 & 6: K1, purl to marker, dropping any extra wraps, wrap and turn, knit until 2 sts remain, M1, K2.

Rows 3 & 5: K1, purl to 10 sts before marker, wrap and turn, knit to end.

Row 4: K1, purl to 20 sts before marker, wrap and turn, knit to end.

Row 7 (WS): K1, purl, picking up wraps.

Row 8 (RS): Knit.

Row 9 (WS): K1, purl to marker wrapping yarn around needle twice, purl to end.

Continued on Back

Cable Cast-On

Step 1



Cast-on 2 sts using a slip knot and a knitted cast-on st. Insert right needle between sts.

Step 2



Wrap yarn around right needle as if to knit.

Step 3



Draw yarn through to make a new st.

Step 4



Slip new st onto left needle as indicated above. Continue casting on, always inserting right needle between last two sts on left needle.

Tapered Skirt

With waste yarn and 3.0 mm needle, crochet cast-on 120 sts. Join A. Begin working stripe sequence as follows:

A1, B, A1, C, A2, D, A2, B, A2, C, A2, D, A2, B, A2, C, A2, D, A2, B, A2, C, A1, D, A1, B, A1, C, A3, D, A3, B, A3, C, A3, D, A3, B, A3, C, A3, D, A3, B, A3, C, A3, D, A3, B, A3, C, A1, D.

Join Back Seam

Break yarn leaving a long tail to graft sts together. Leave sts on needle.

Carefully pull out crochet cast-on from beginning, placing sts on spare needle (dropping extra loop).

Thread tapestry needle with yarn tail. Place the 2 needles with wrong sides together. Draw the yarn purlwise through the first st on front needle, leaving st on needle. Draw the yarn knitwise through the first st on back needle, leaving st on needle. *Draw the yarn knitwise through the first st on front needle, slipping st off the needle. Draw the yarn purlwise through the second st on front needle, leaving st on the needle. Draw the yarn purlwise through the first st on back needle, slipping st off the needle. Draw the yarn knitwise through the second st on back needle, leaving st on needle. Repeat from * until 1 st remains on each needle. Draw the yarn knitwise through the st on front needle, slipping st off the needle. Draw the yarn purlwise through the st on the back needle, slipping st off the needle. Fasten off.

Waistband and Elastic Casing

With RS facing, join Color A at top of skirt, at approximate center back. With 3.0 mm needle, pick up sts around entire edge, picking up 4 sts in each Color B, C & D stripe and 2 sts in each Color A stripe. 216 sts on needle.

Place marker; join.

Rnd 1: *K4, K2tog; repeat from * to end. 180 sts.

Work 8 rnds even.

Change to 3.75 mm needle, knit 1 rnd.

Change to 2.5 mm needle, knit 3 rnds.

Next Rnd: Work to end of rnd, turn.

Work 5 rows in stockinette st.

Next Row: Work to end of row, place marker, join. Work 3 more rnds. Bind off loosely. Turn casing to inside of skirt and sew down.

Insert elastic through waistband casing. Sew up casing opening.

Short Skirt

With waste yarn and 3.0 mm needle, crochet cast-on 70 sts. Join A. Begin working stripe sequence as follows:

(A1, B, A1, C, A1, D) 12 times. Work the same as Tapered skirt from Join Back Seam.



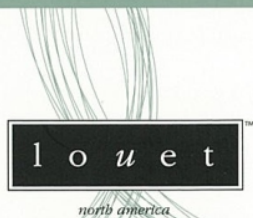
Skirt Shown in the Following Colors

Cover: #01 Champagne, #04 Soft Coral, #96 Peaches & Cream, #47 Terra Cotta

Above: #53 Caribou, #23 Berry Red, #11 Red, #27 Crabapple Blossom

Skill Level for Pattern Ashley:

INTERMEDIATE



Euroflax

100% Wet Spun Linen

machine washable & dryable

Fine / Sport Weight

100 gram skein / 270 yards

For technical assistance with this pattern, please contact:

Lynda Rossetti
lynda@louet.com

For all other inquiries about Louet's products, please contact:

info@louet.com



Fine / Sport Weight



Machine Wash Gentle



Tumble Dry, Normal, Medium Heat



Steam Iron, Medium Heat

l o u e t

north america

United States
808 Commerce Park Dr.
Ogdensburg, NY 13669

Canada
3425 Hands Rd.
Prescott, Ontario K0E 1T0

info@louet.com
www.louet.com

© 2007 Louet North America
Made in USA

