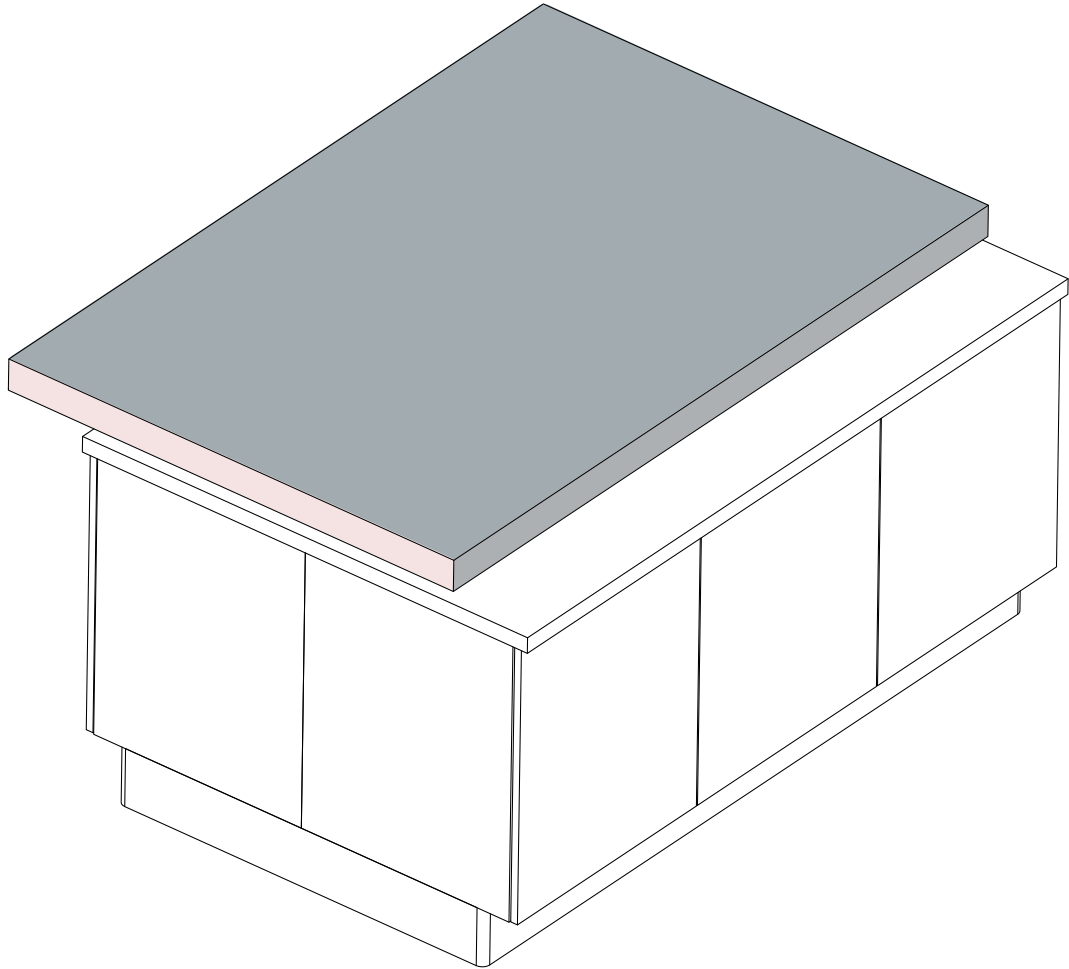


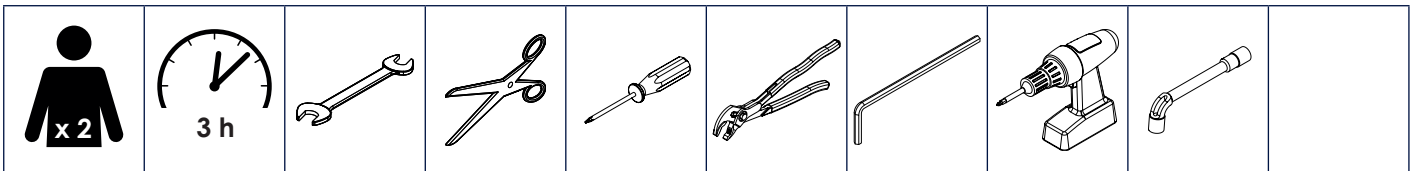
# Plan de travail coulissant stratifié

## Sliding stratified wood worktop

Instructions de montage  
Mounting instructions

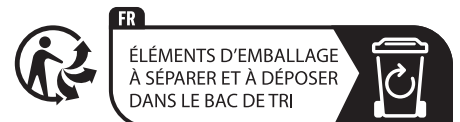


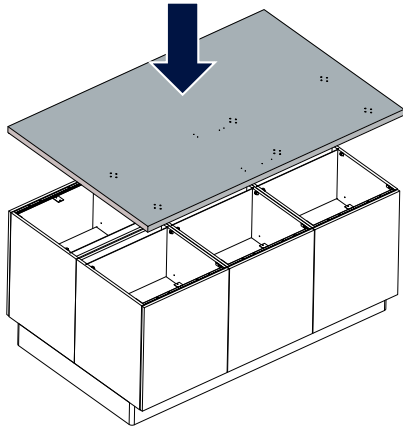
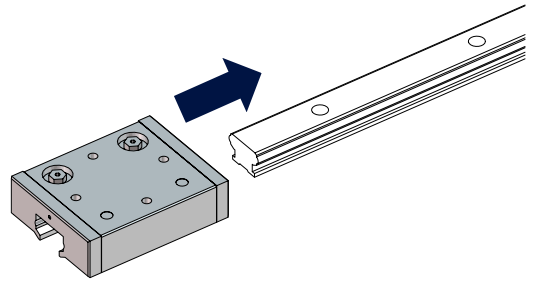
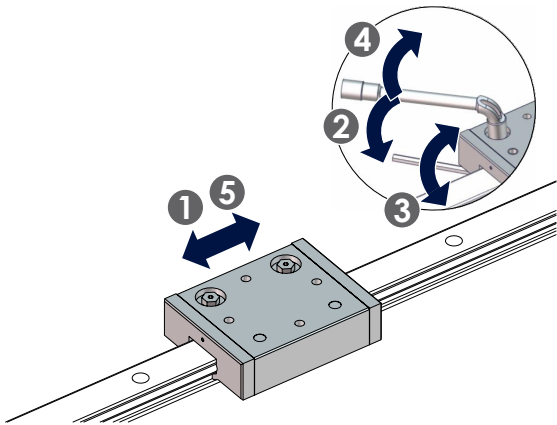
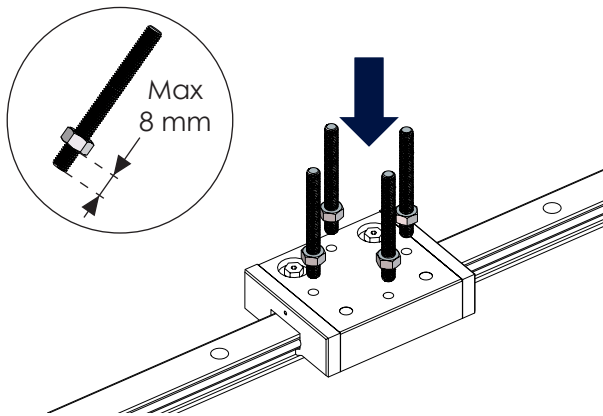
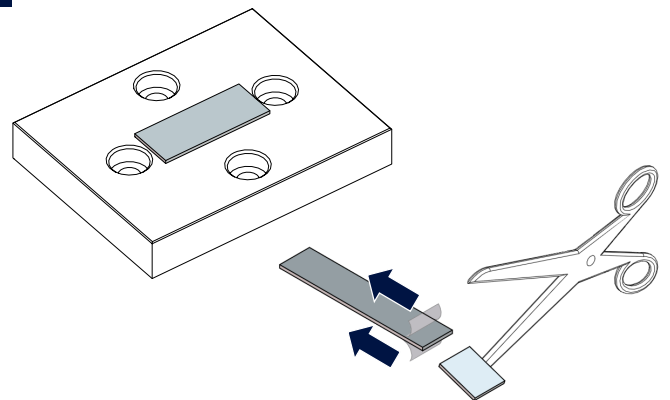
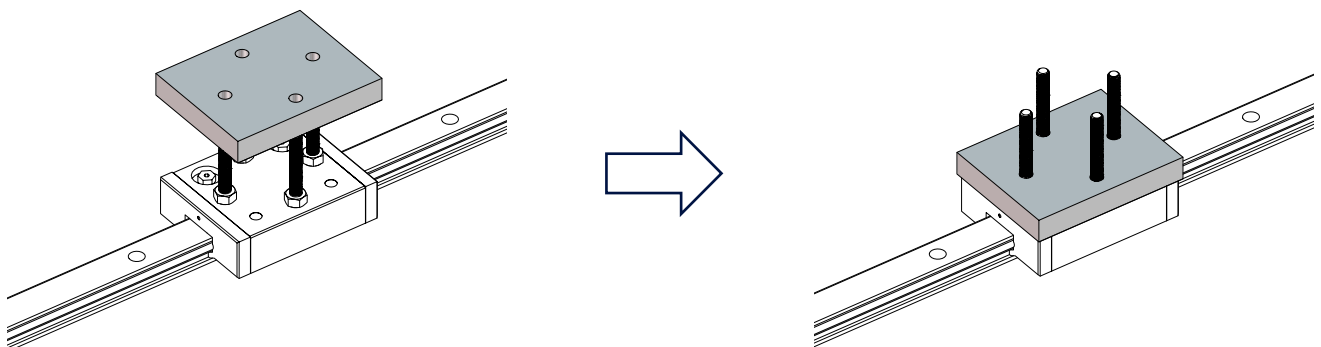
Nécessaire / Necessary



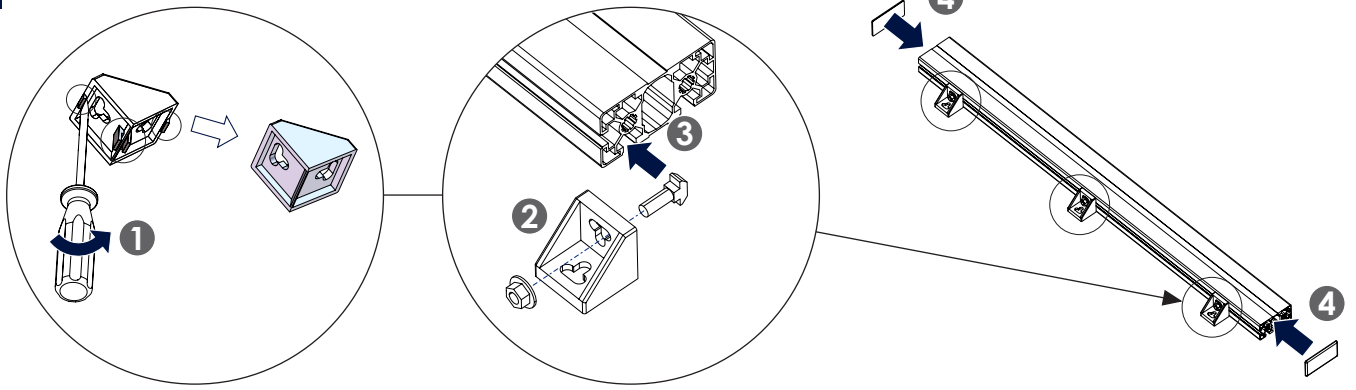
Références / References

MPTCF	RGPTCF	P4I...	P8S...
-------	--------	--------	--------

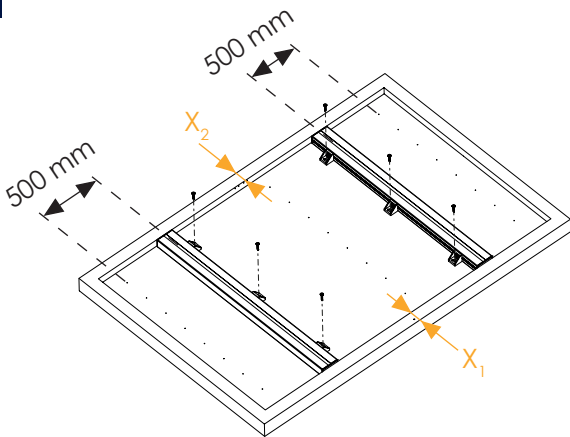


**1****2****3****1** Positionnez la pièce / *Place the piece***2** Desserrez l'écrou / *Untighten the nut***3** Ajustez le réglage de l'excentrique du galet pour assurer un bon glissement / *Adjust the eccentric cam roller to ensure the sliding quality***4** Maintenez la clé BTR et resserrez l'écrou / *Hold the allen key and tighten the nut***5** Testez le fonctionnement / *Test the sliding quality***4****5****6**

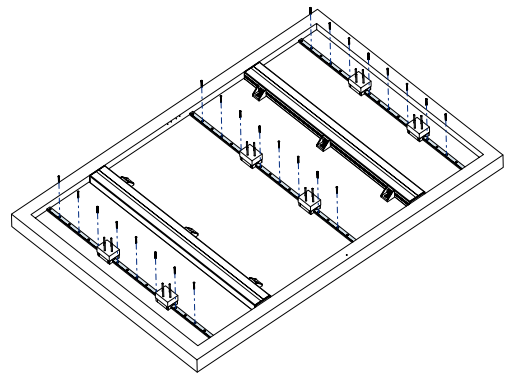
7



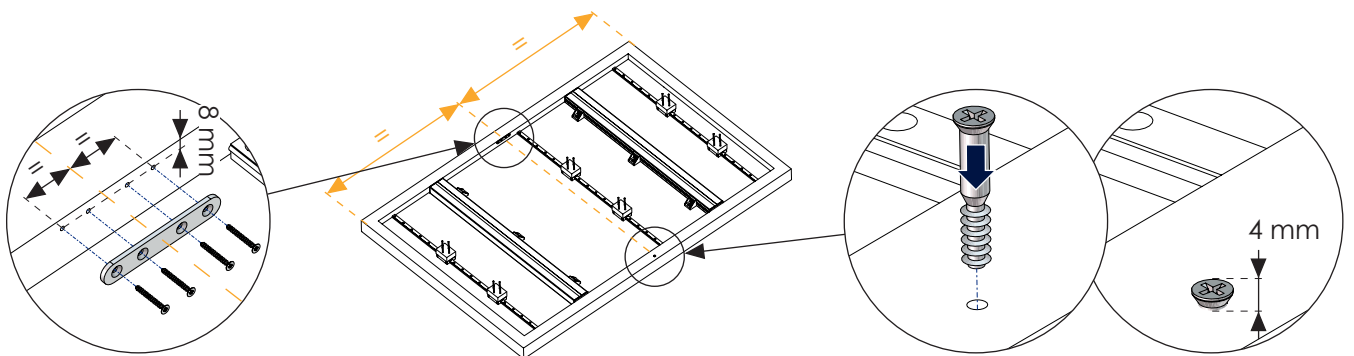
8



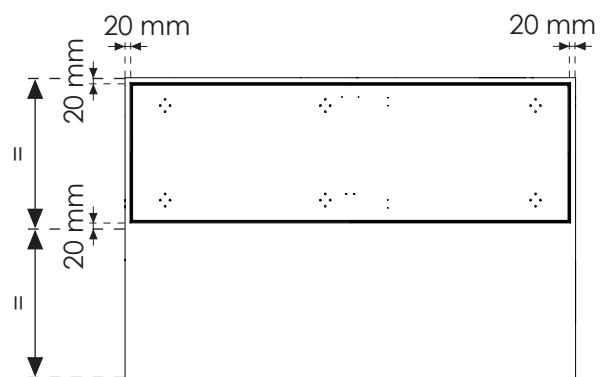
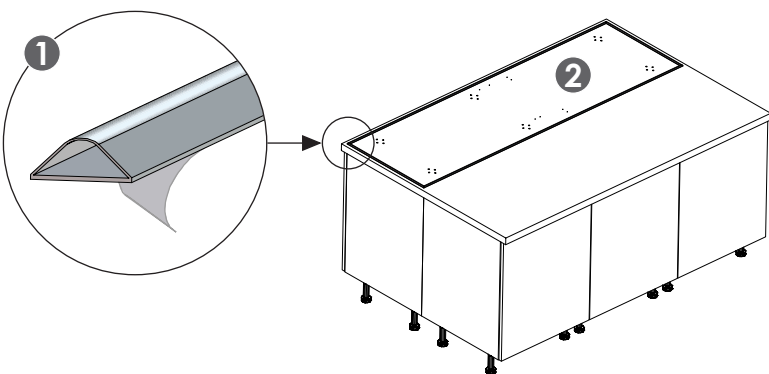
9



10

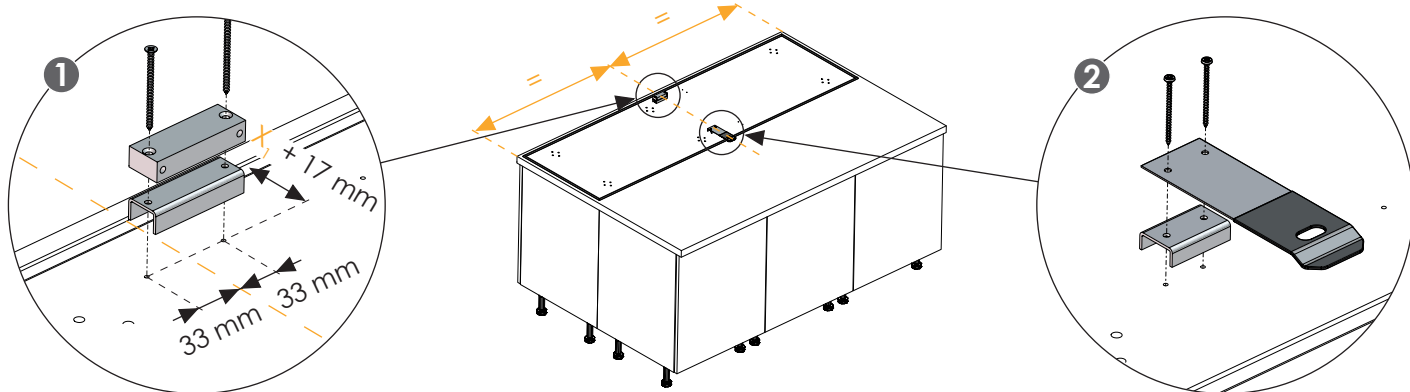


11

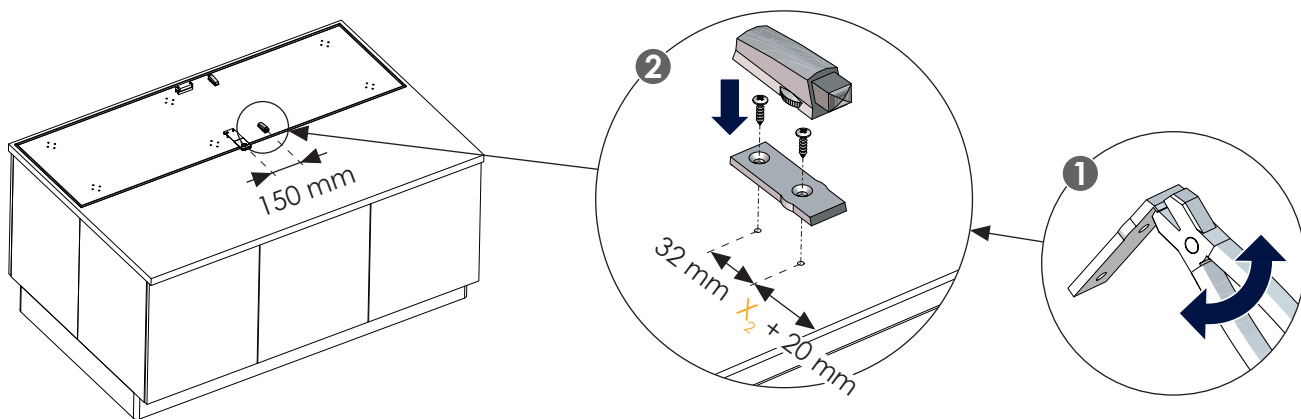


En fonction de la configuration / Linked to configuration

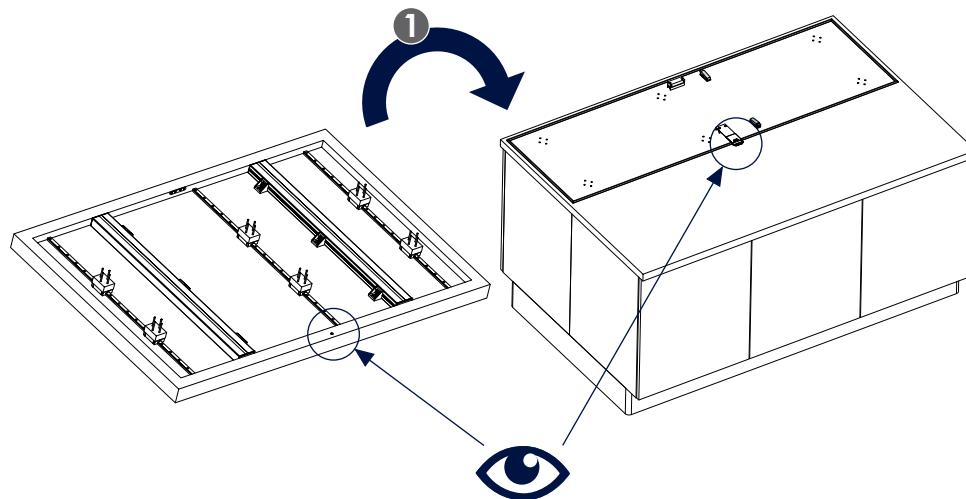
12



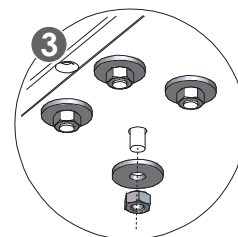
13



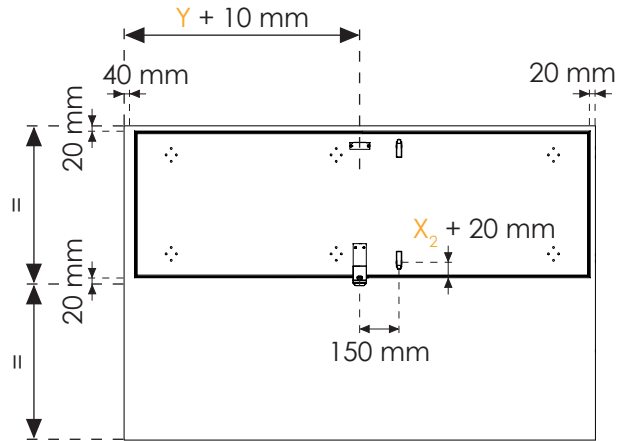
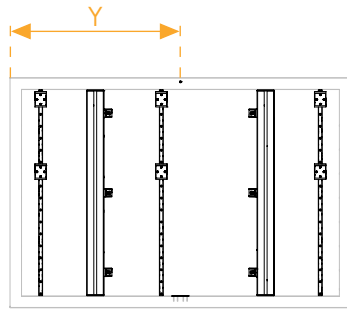
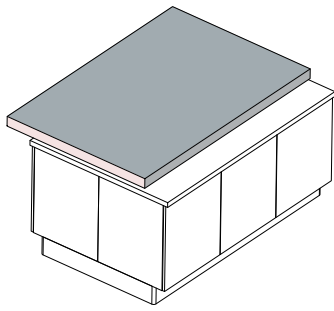
14



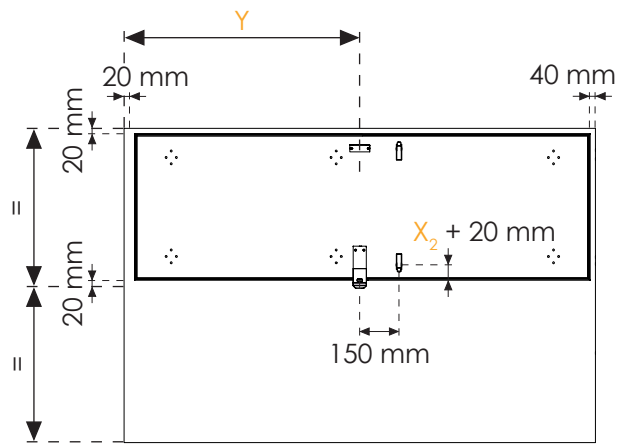
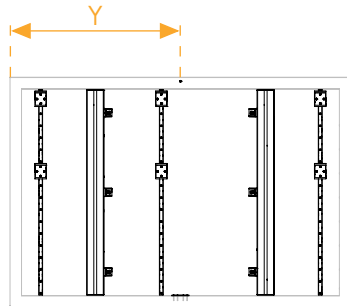
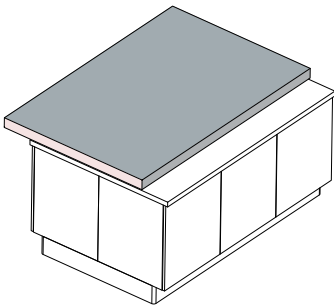
2 Avant de serrer les écrous, manœuvrez 2 à 3 fois le plan coulissant pour axer l'ensemble rails et patins de guidage / Before tightening the bolts, have the top worktop sliding twice in the order to line up the rails and rollers



**Configuration 1 :** Frontale décalage à gauche / *Frontal sliding worktop with left gap*



**Configuration 2 :** Frontale décalage à droite / *Frontal sliding worktop with right gap*



**Configuration 3 :** Frontale décalage à gauche et à droite / *Frontal sliding worktop with left and right gap*

