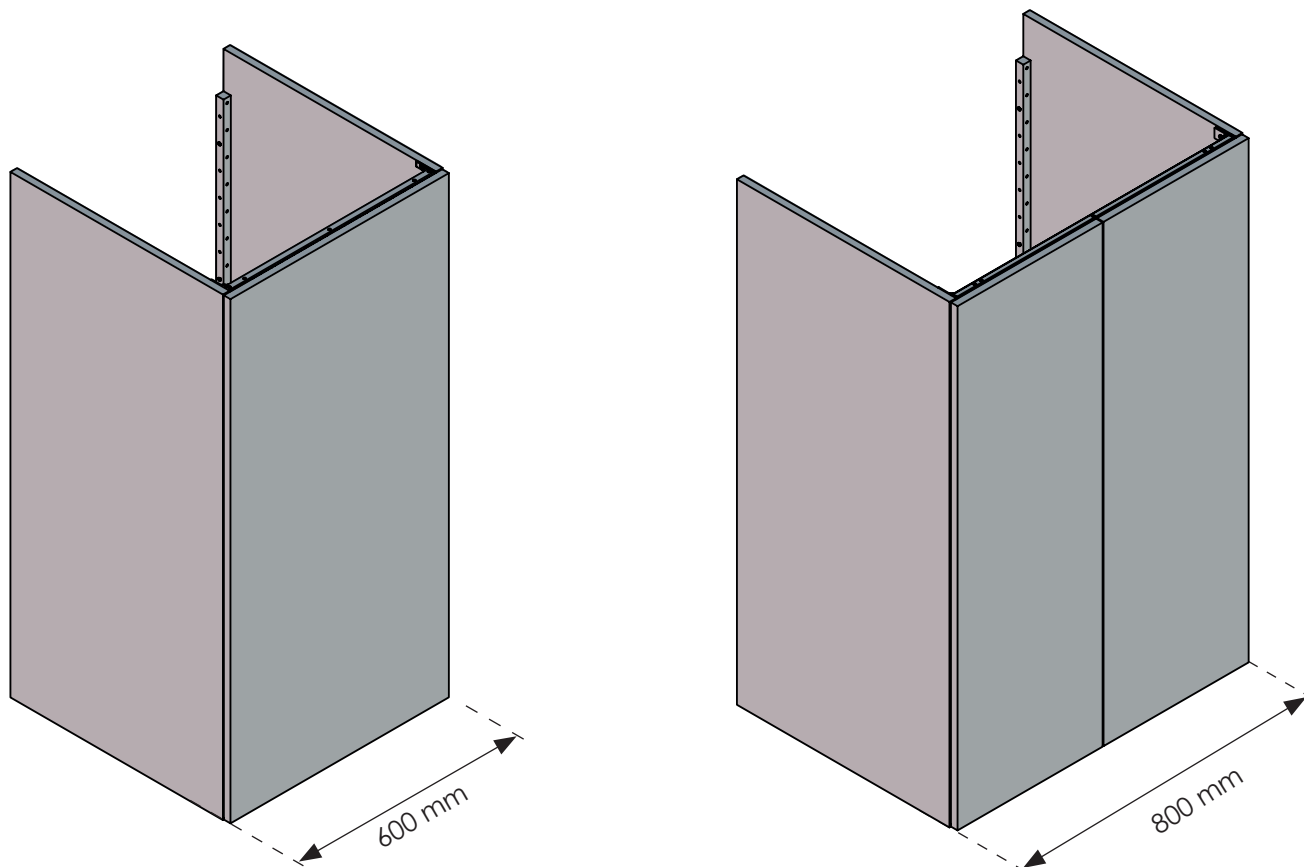
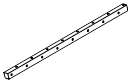
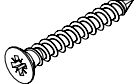


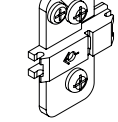


# Haut chaudière Boiler wall units





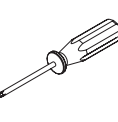
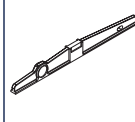
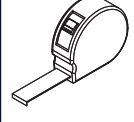
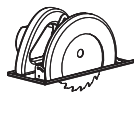
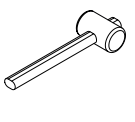
Instructions de montage  
Mounting instructions



## Quincaillerie / Hardware

CDM_0000341	CAC_0000685	00094482	CAC_0000645	CAC_0000752					
									
A	Ø 4x30	B	C	Ø 6x12,7	D	E			

## Nécessaire / Necessary

									
x 1	1 h								

## Références / References

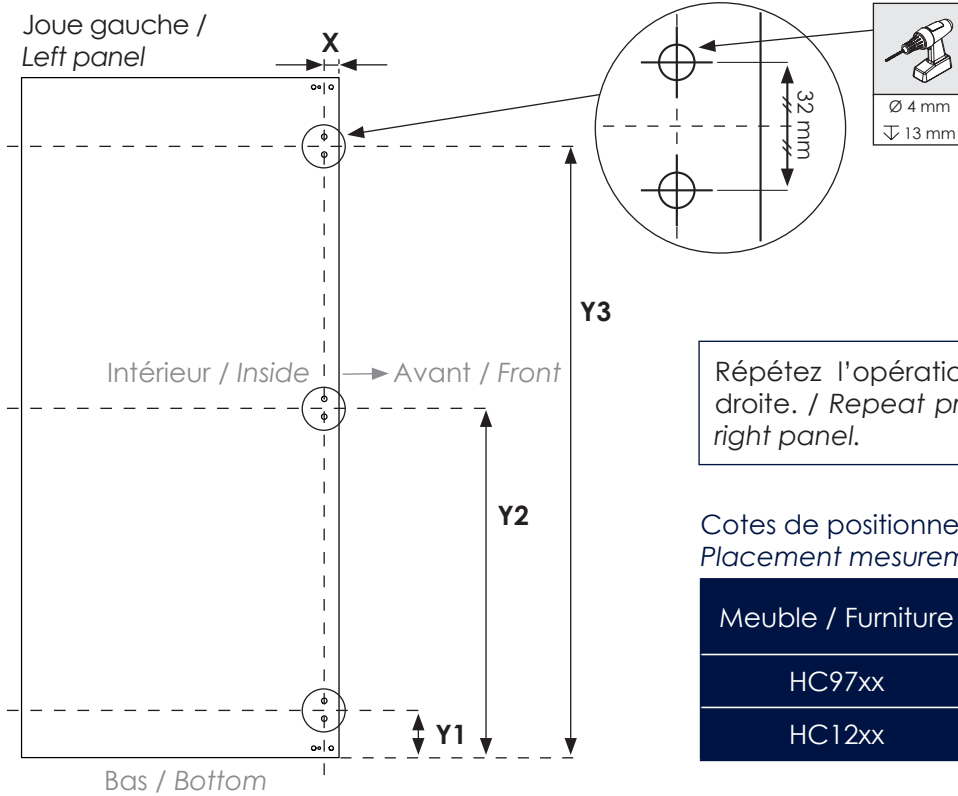
HC9760		HC9780		HC1260	
HC1280					



FR  
ÉLÉMENTS D'EMBALLAGE  
À SÉPARER ET À DÉPOSER  
DANS LE BAC DE TRI



## 1 Positionnement des perçages pour les platines de charnières / Drill marks for hinges plates placement

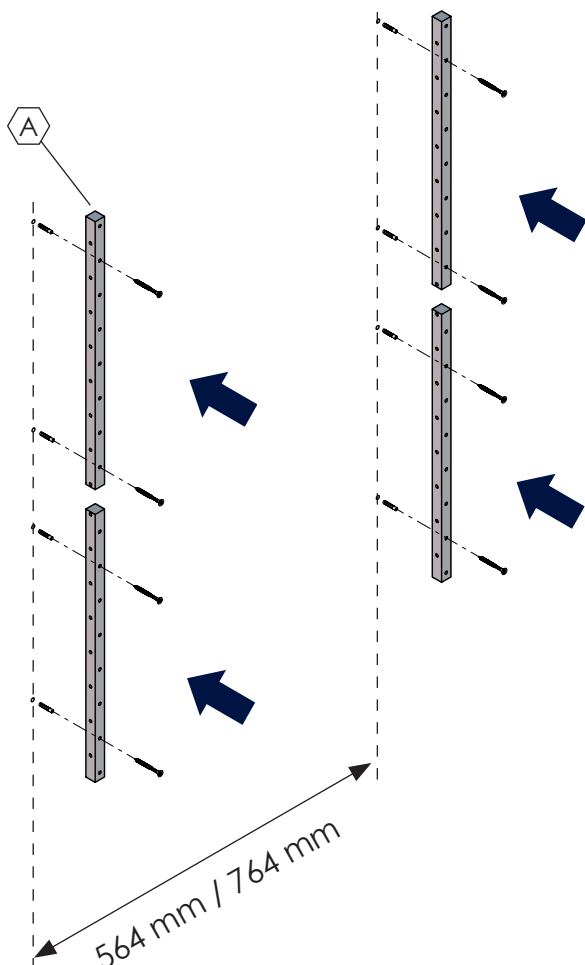


Répétez l'opération en symétrie sur la joue droite. / Repeat process symmetrically on the right panel.

Cotes de positionnement /  
Placement measurements (mm)

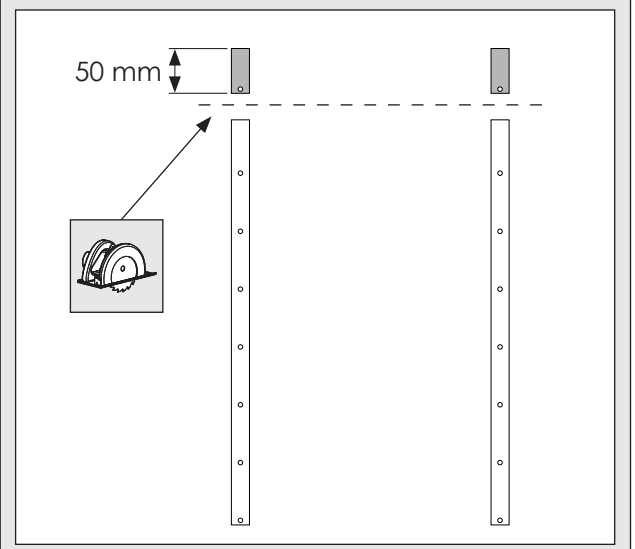
Meuble / Furniture	X	Y1	Y2	Y3
HC97xx	27	90	483	876
HC12xx	27	90	621	1152

## 2 Fixation murale des tasseaux / Wall mounting of the strips

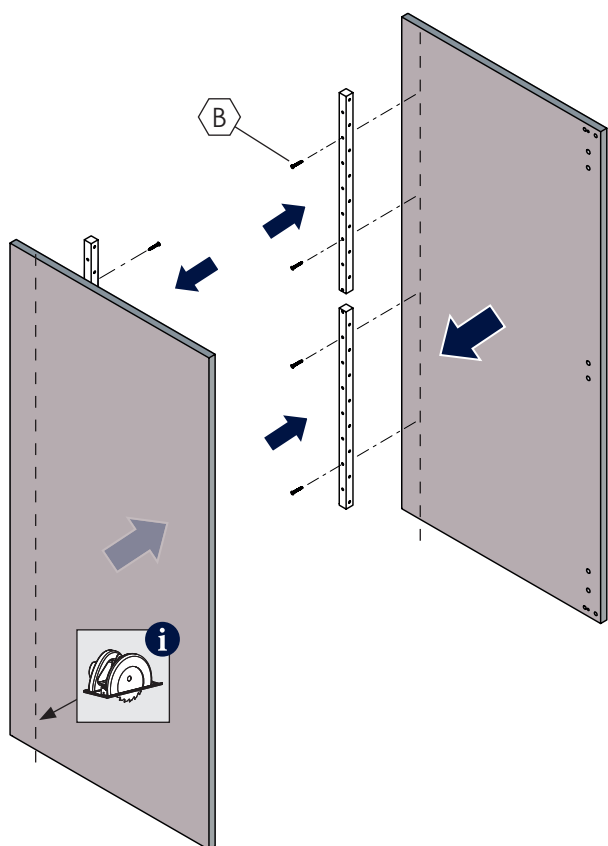


Vis et chevilles non fournies, à adapter selon le mur / Screws and plugs not included, to be adapted to the wall

Dans le cas des meubles **HC97xx** recoupez deux tasseaux (hauts ou bas) de 50mm afin qu'ils ne dépassent pas. / For **HC97xx** furnitures shorten two strips (high or low) of 50mm so they won't protude.



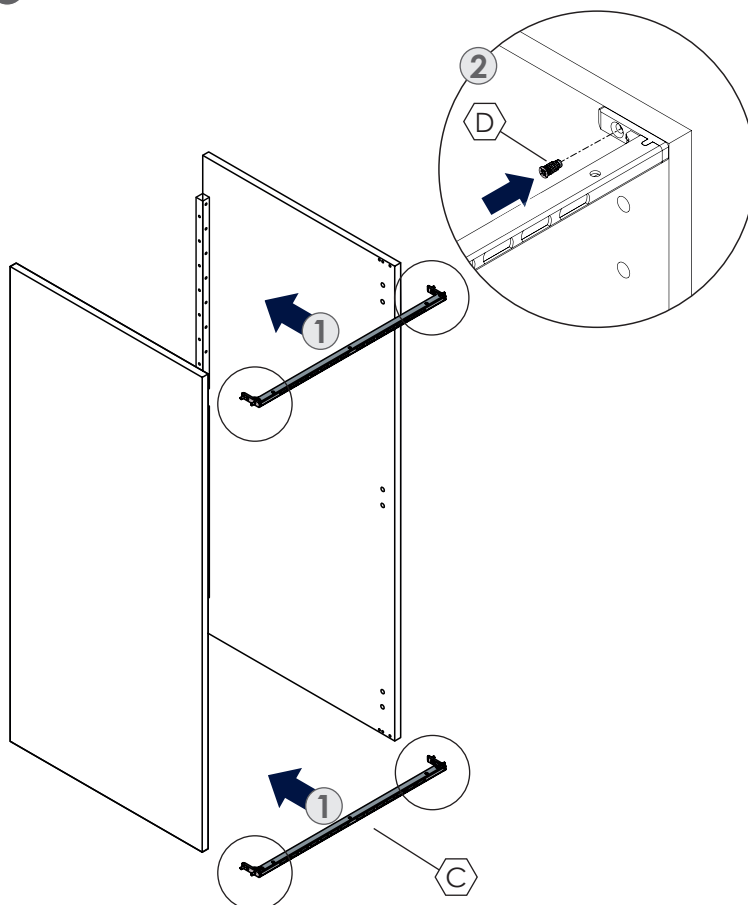
**3** Assemblage des joues / Sides assembly



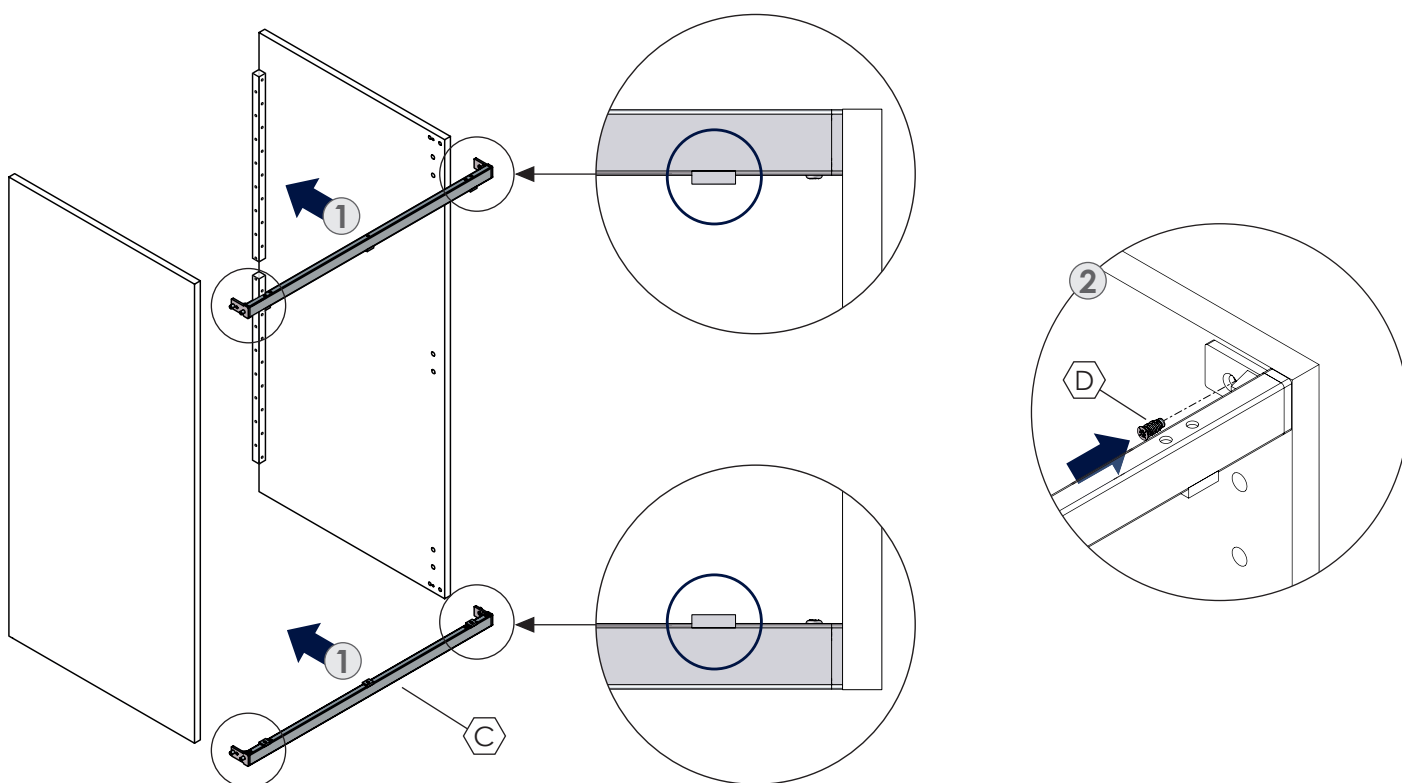
**i** Si besoin : recouper les côtés /  
If necessary: cut the sides

**4** Assemblage des bandeaux / Metal reinforced bars assembly

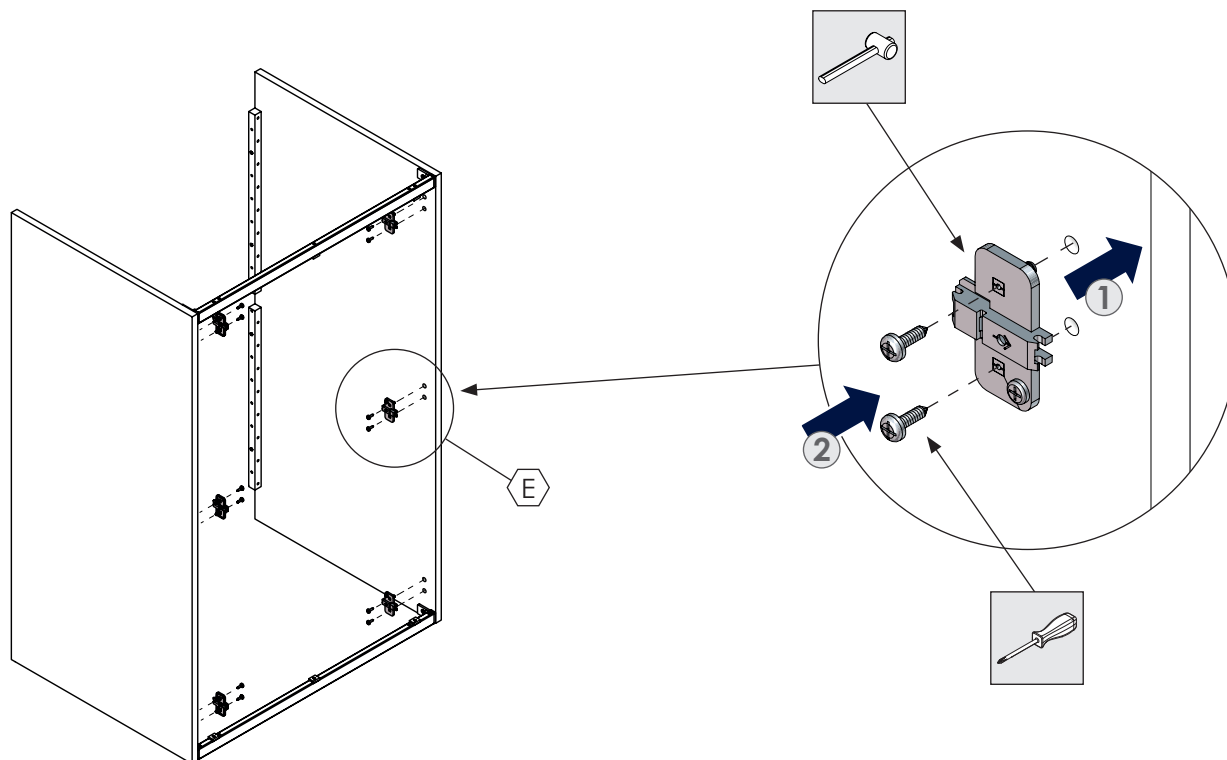
**1** Meuble L = 600 mm / Unit W = 600 mm



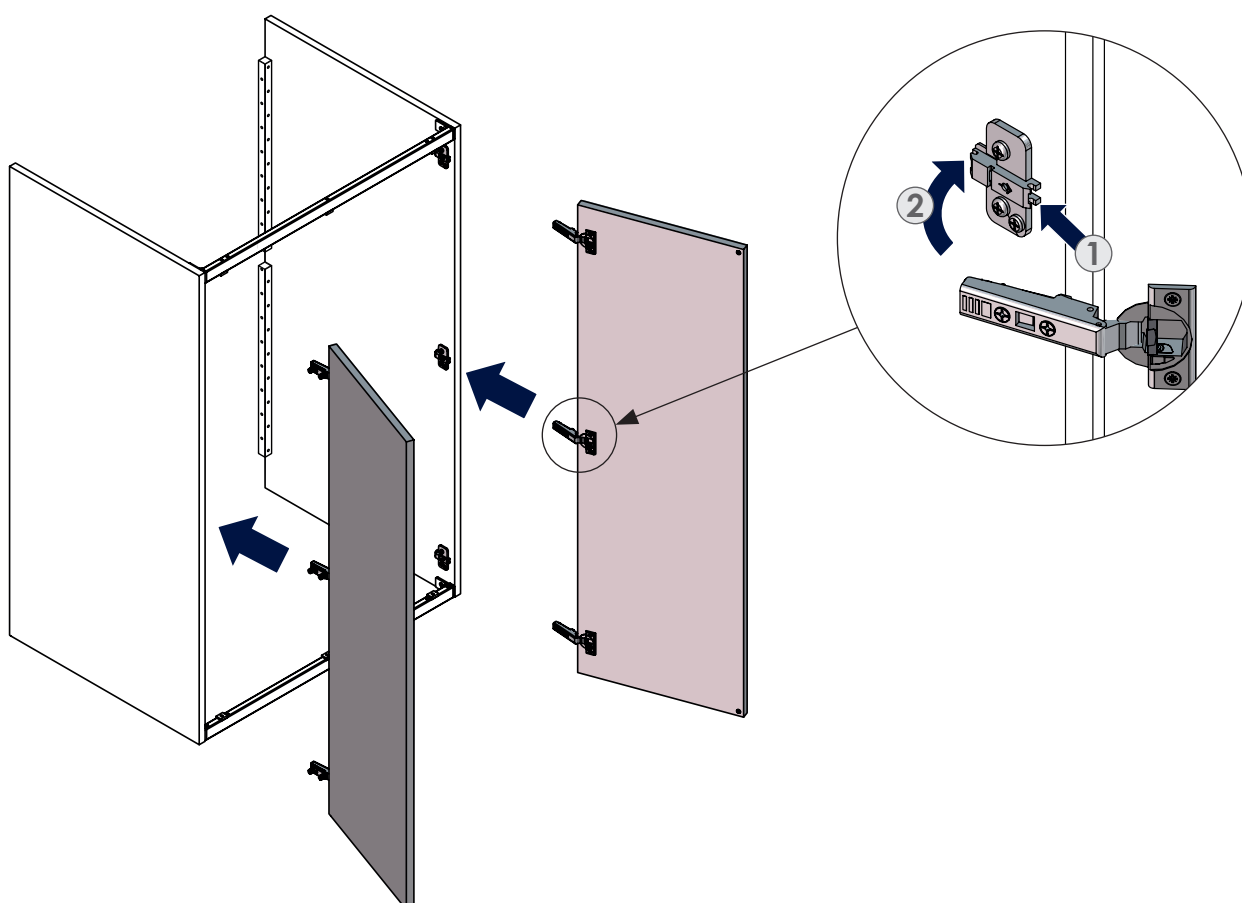
**2** Meuble L = 800 mm / Unit W = 800 mm



**5** Assemblage des platines de charnières / Hinges plates assembly



**6** Assemblage des portes / Doors assembly



6 Réglage des charnières / Hinges fine tuning

