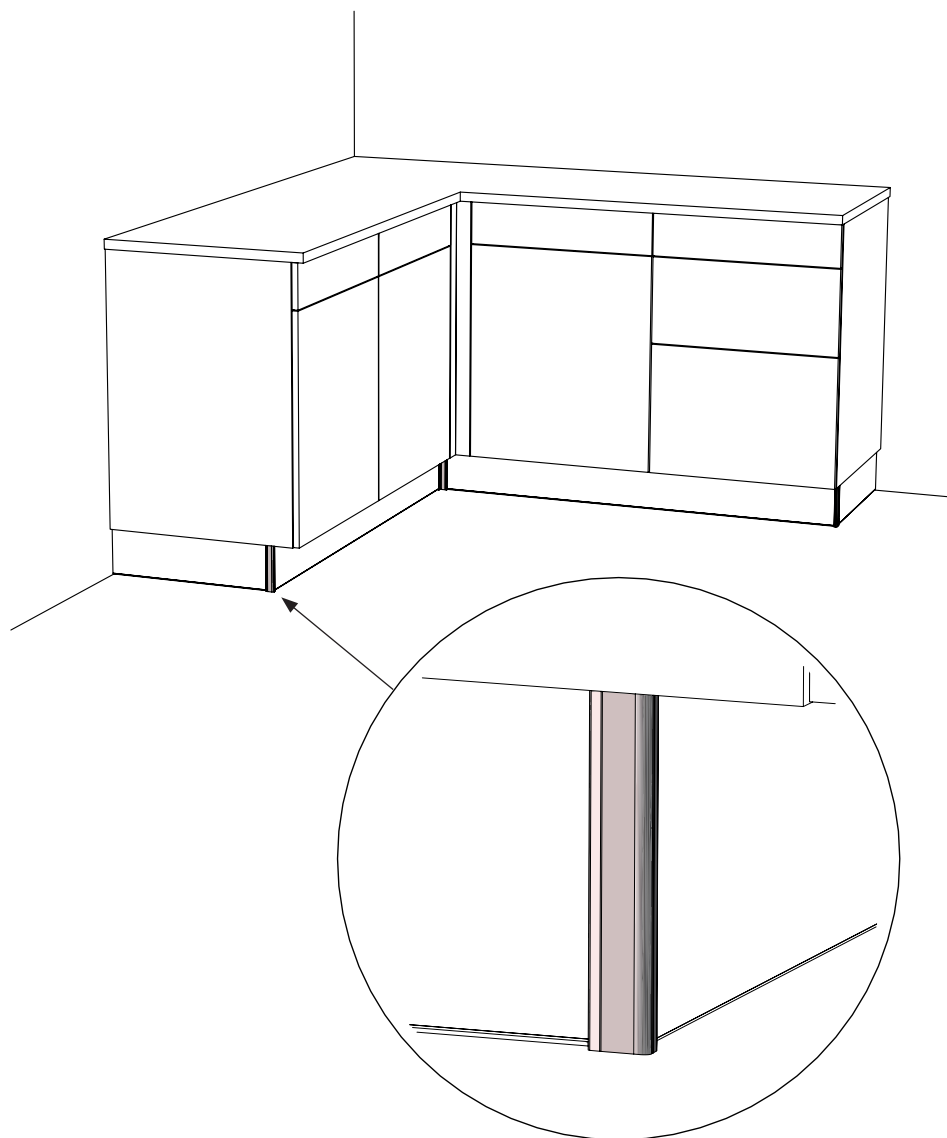
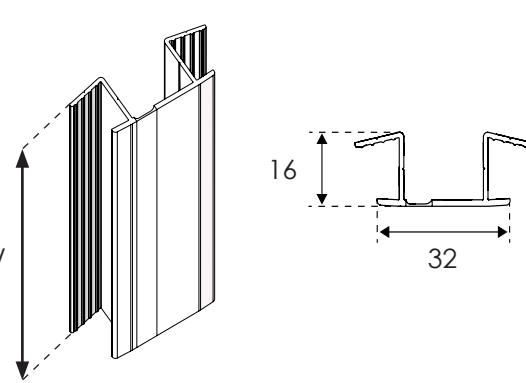





# Profil d'assemblage des socles

## Profile for plinths assembly

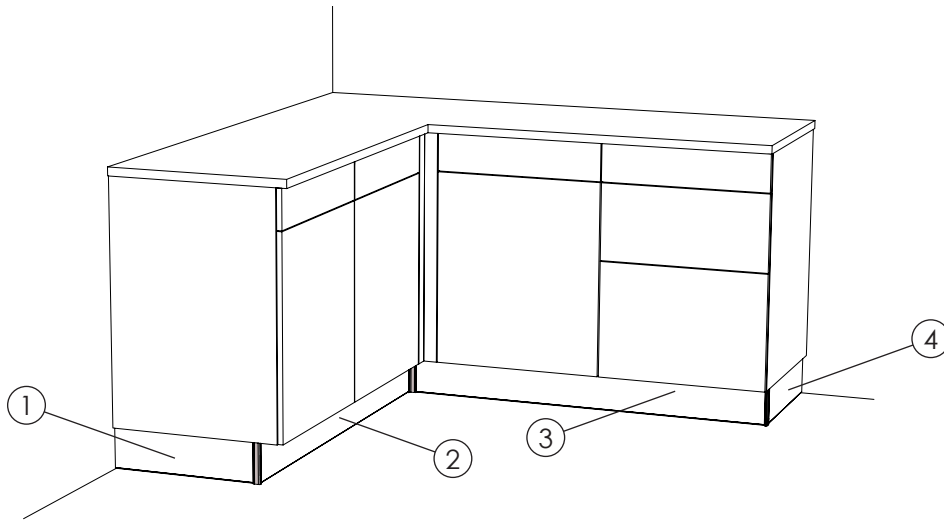
Instructions de montage  
Mounting instructions



<p>Dimensions (mm)</p>  <p>71 / 96 / 136 / 166 / 186</p> <p>16</p> <p>32</p>	<p>Références / References</p> <p>PASAM</p> <hr/> <p>Nécessaire / Necessary</p> <p> x 2</p> <p> 10 mn par profil / per profile</p> <p></p>
---	--

## Glossaire / Glossary

1	Retour de socle 1 / Plinth return 1	3	Socle 2 / Plinth 2
2	Socle 1 / Plinth 1	4	Retour de socle 2 / Plinth return 2

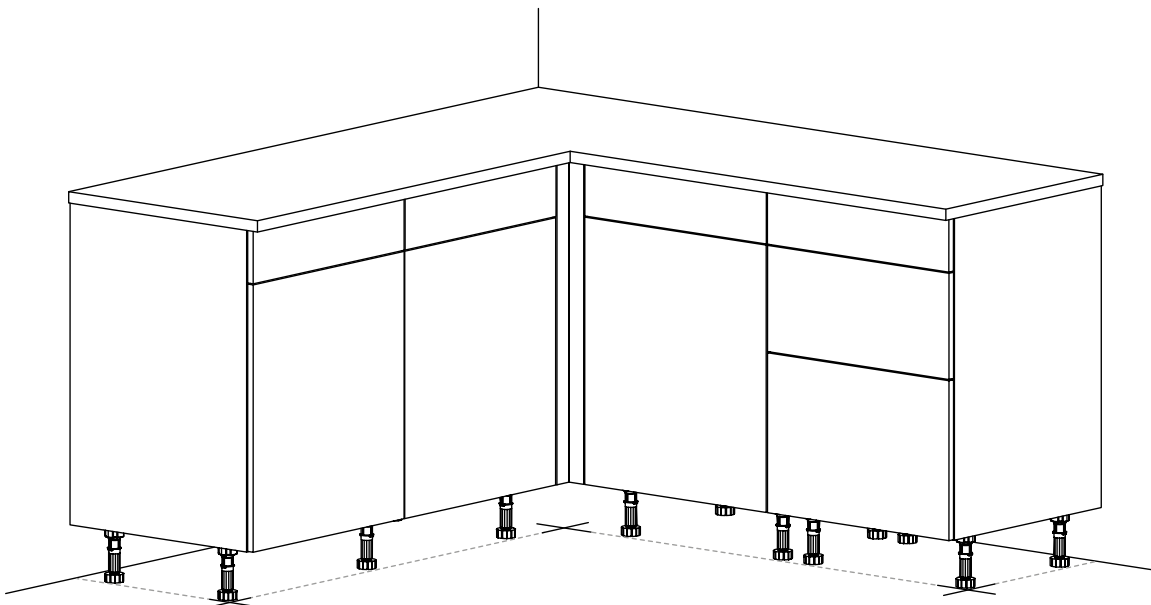
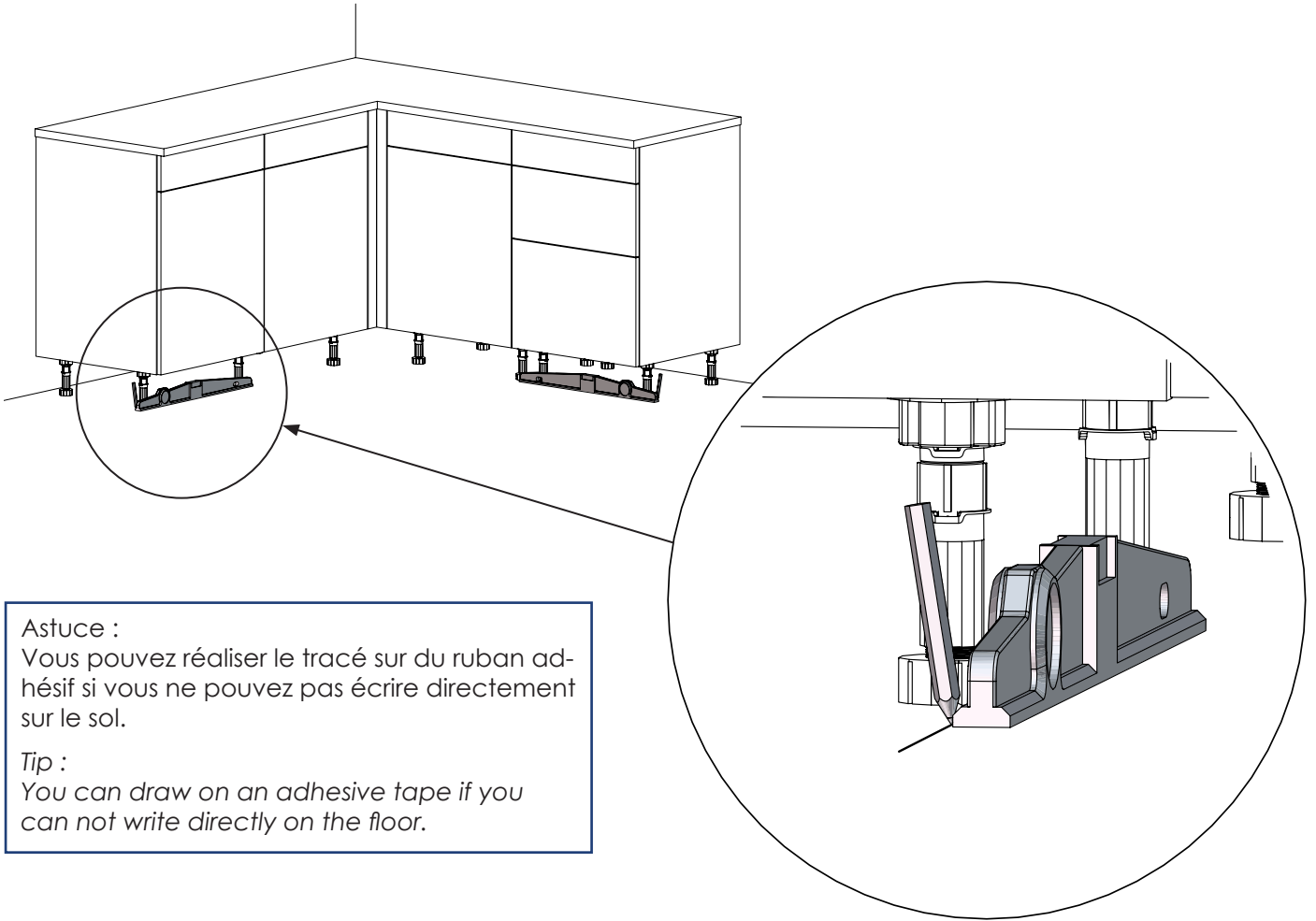


## Outillage non fourni / Not supplied tools


## Sommaire / Contents

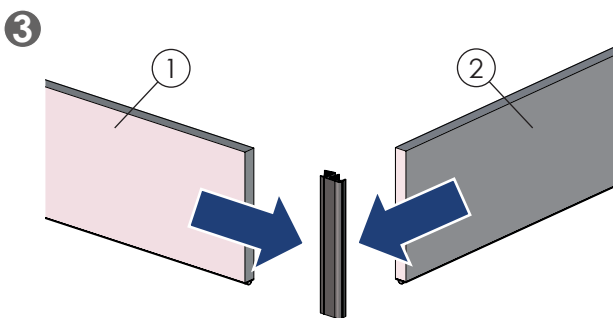
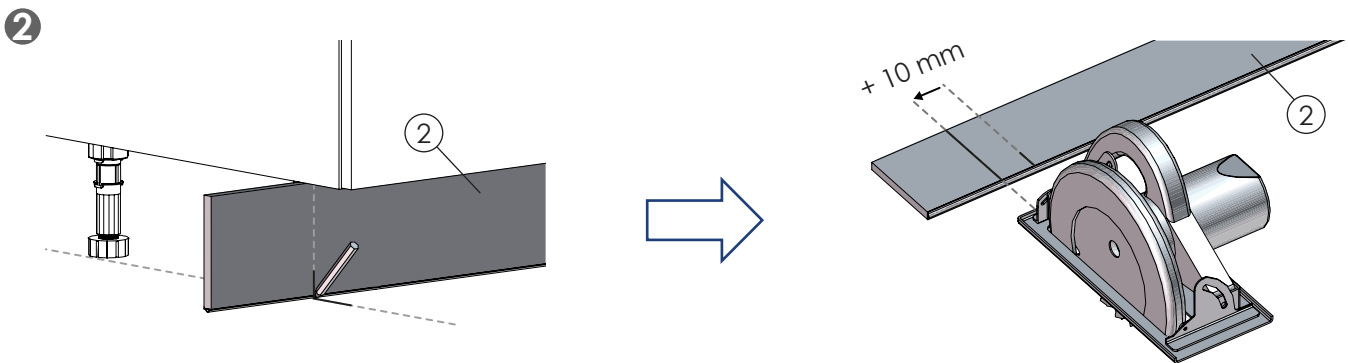
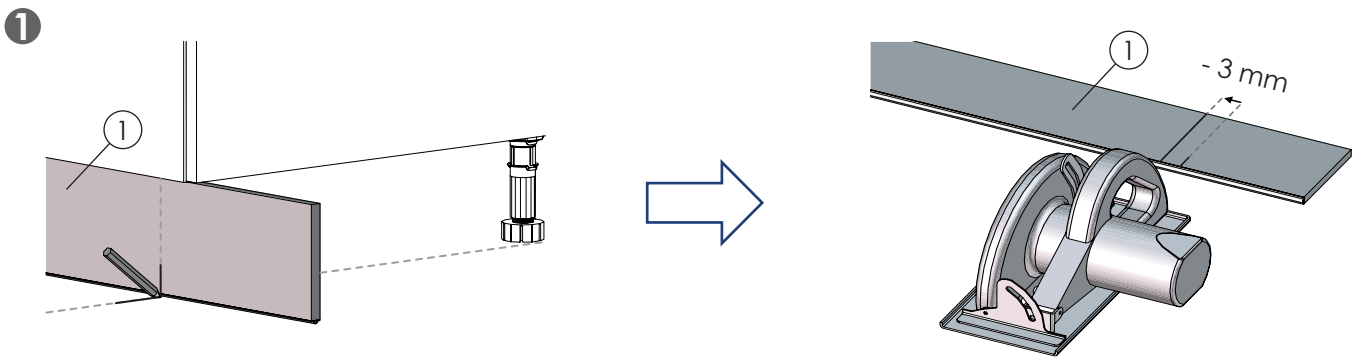
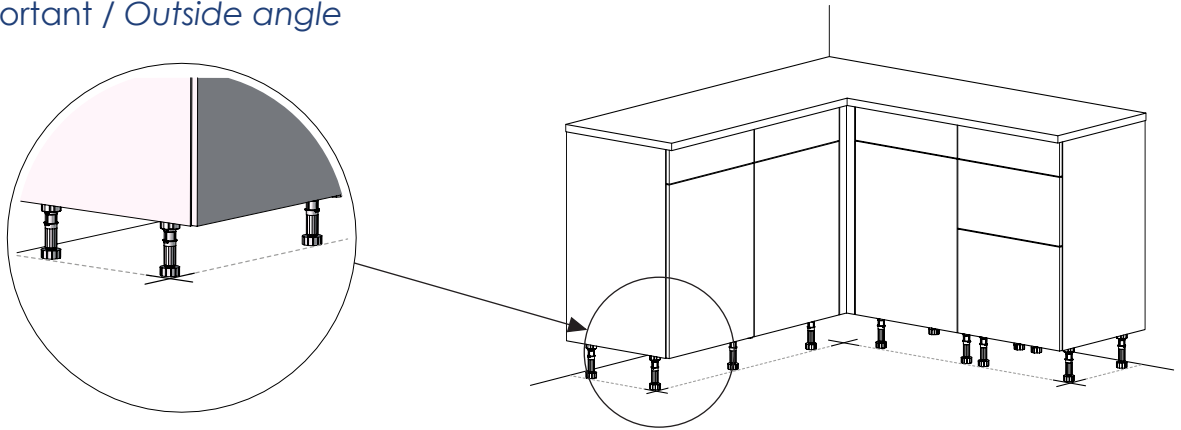
- 1** Tracé au sol / Drawing on the floor
- 2** Découpe par type d'angle / Cutting by angle type
  - A** Angle sortant / Outside angle
  - B** Angle rentrant / Inside angle
  - C** Angles particuliers / Particular angles
  - D** Assemblage linéaire / Linear assembly
- 3** Assemblage final / Final assembly
  - A** Assemblage des clips de socle / Plinth clips assembly
  - B** Fixation des profils / Profiles fixing

# 1 Tracé au sol / Drawing on the floor



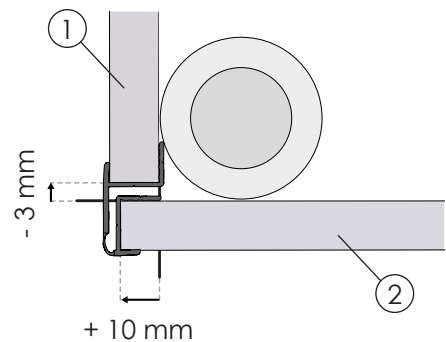
## 2 Découpe par type d'angle / Cutting by angle type

### A Angle sortant / Outside angle

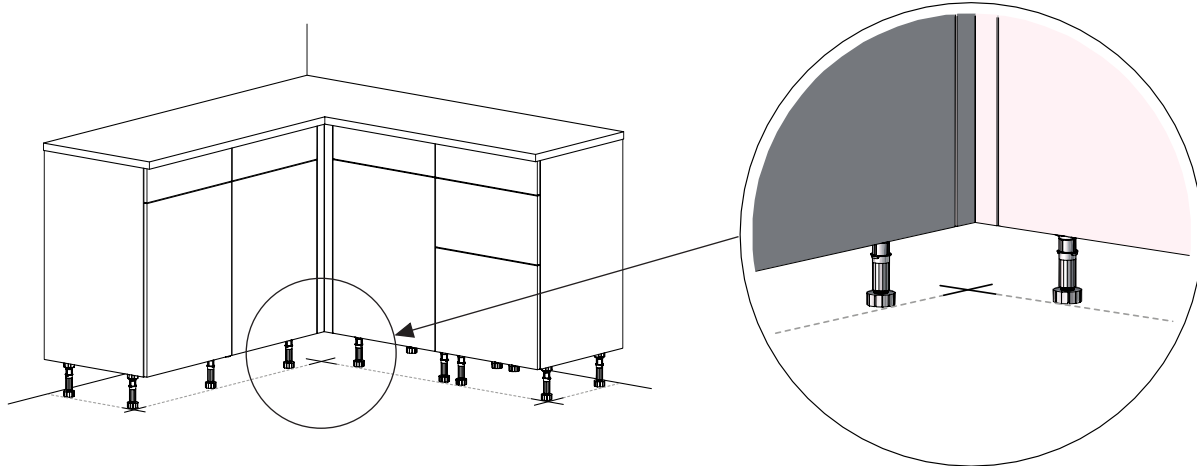


Ne pas visser à cette étape.  
Do not screw at this step.

Rappel des cotes de découpe /  
Reminder of the cutting dimensions

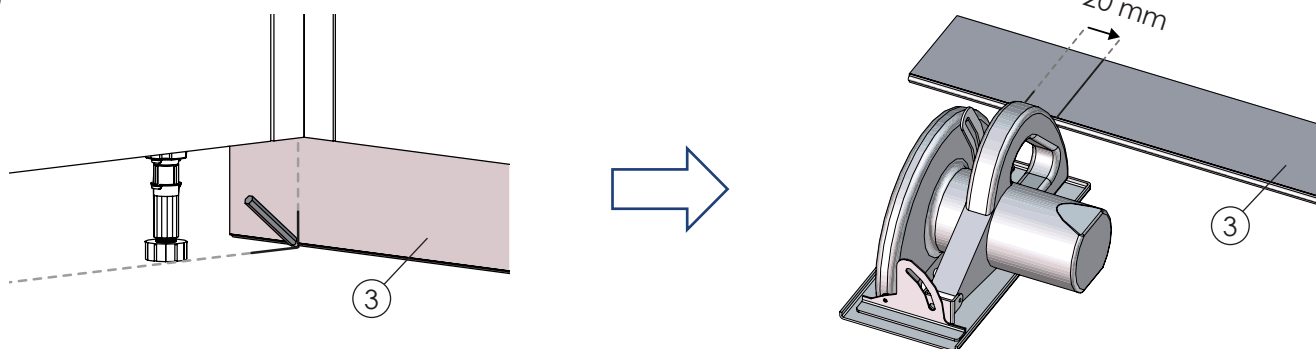


## B Angle rentrant / Inside angle

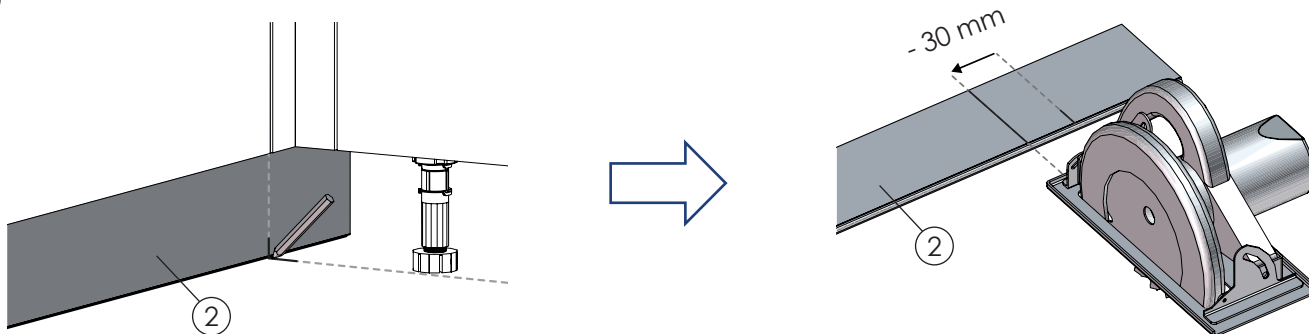


### Méthode 1 : assemblage avec profil / Method 1 : assembly with profile

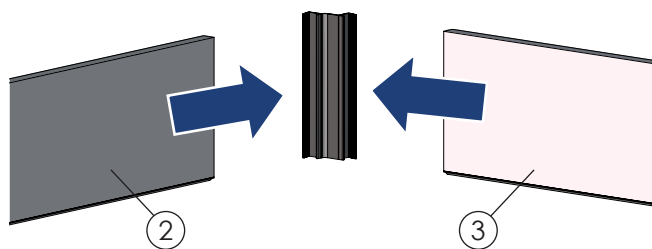
1



2

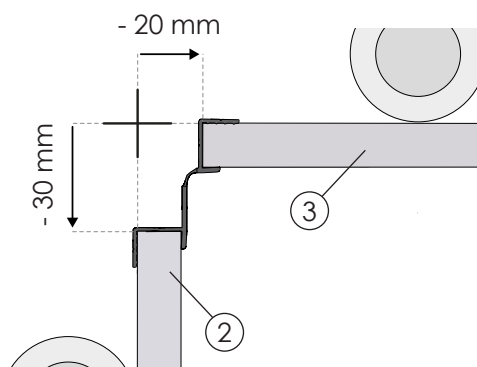


3

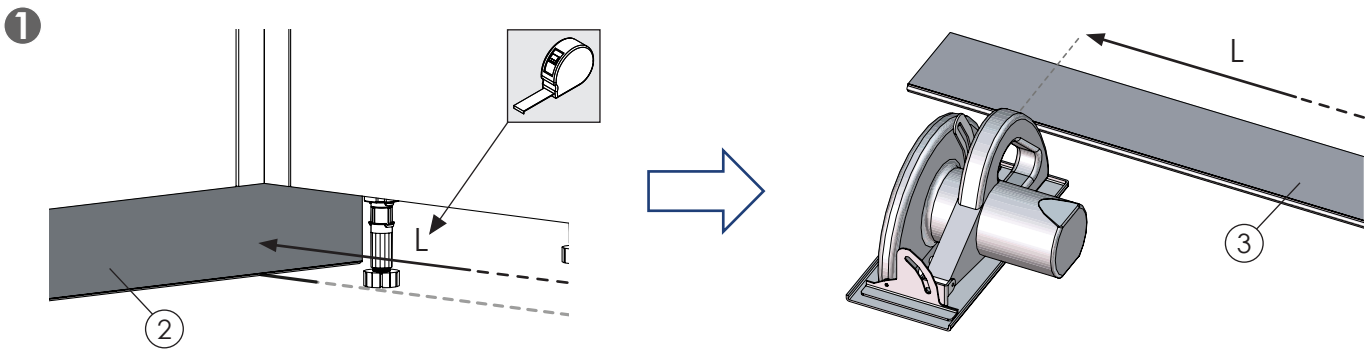


Ne pas visser à cette étape.  
Do not screw at this step.

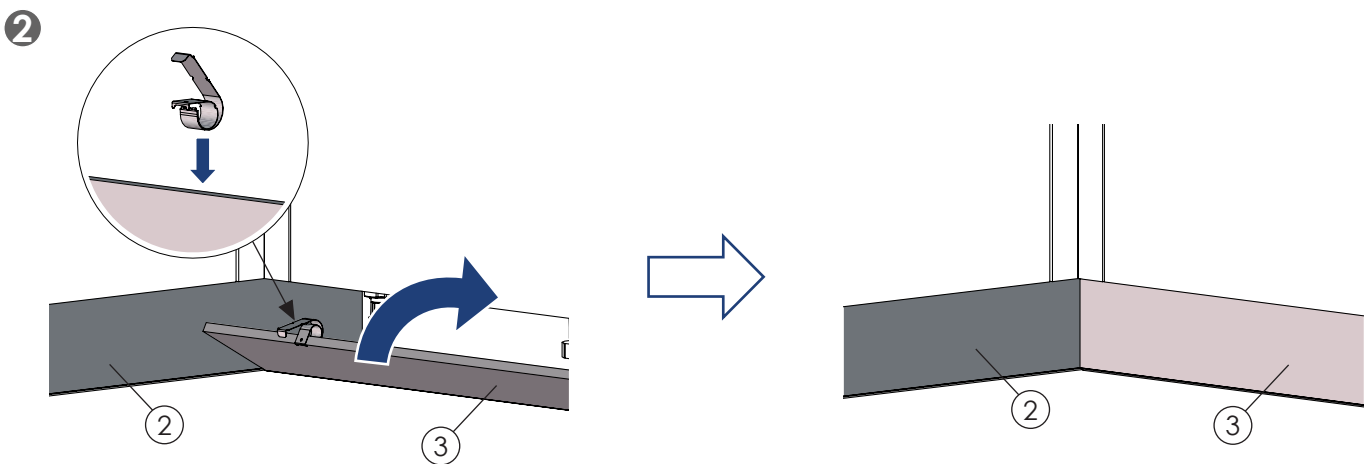
Rappel des cotes de découpe /  
Reminder of the cutting dimensions



Méthode 2 : assemblage sans profil / Method 2 : assembly without profile



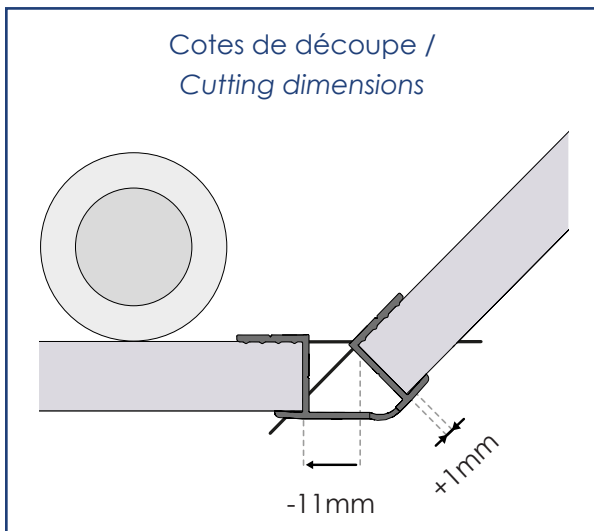
L = Longueur du socle (3) / Length of the plinth (3)



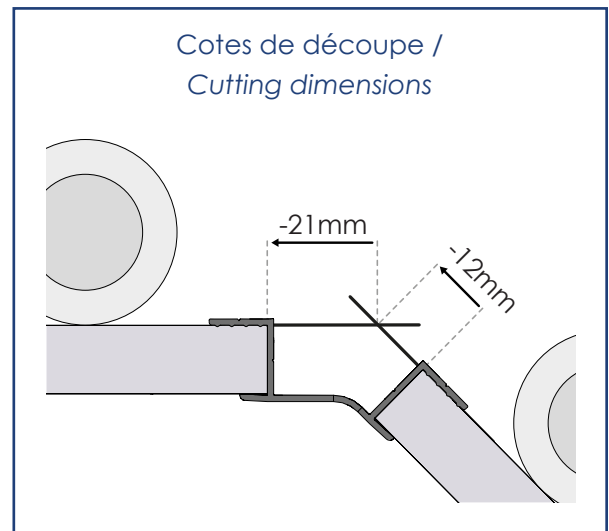
Ne pas découper le socle (2) / Do not cut the plinth (2)

**C** Angles particuliers / Particular angles

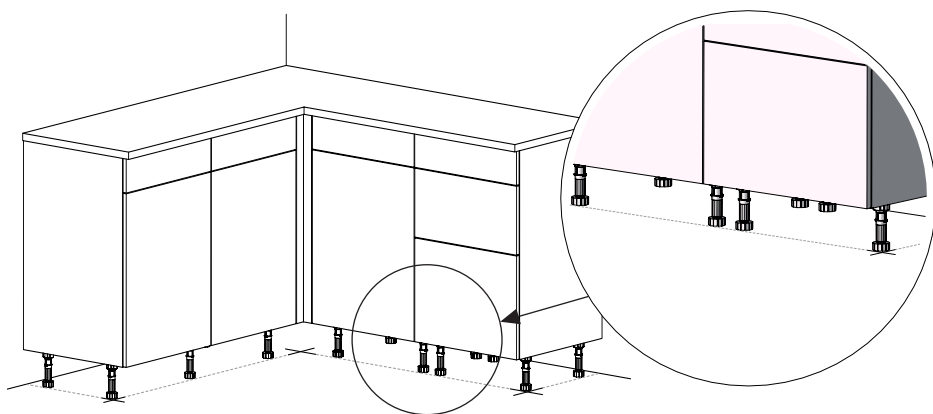
Angle sortant 135° / Outside angle 135°



Angle rentrant 135° / Inside angle 135°



## D Assemblage linéaire / Linear assembly



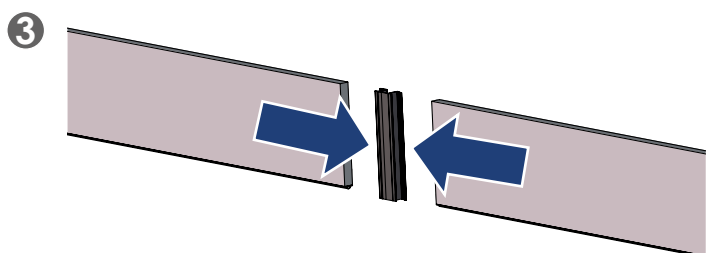
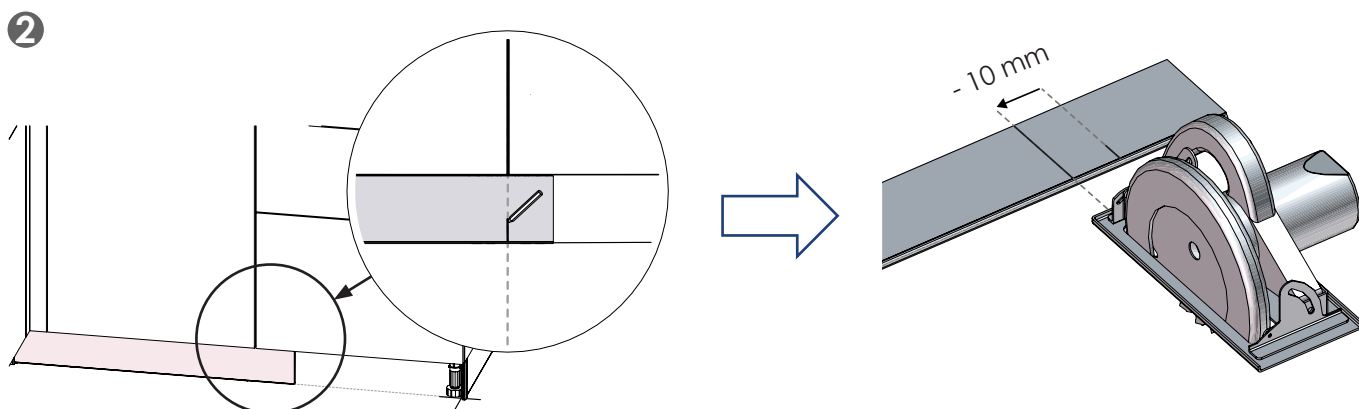
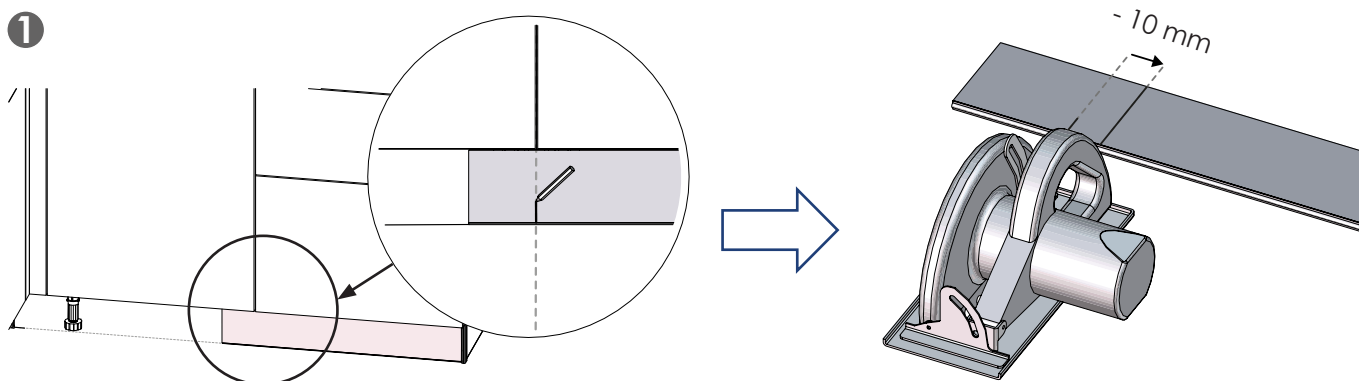
Si 1 socle ne couvre pas toute la longueur, il faudra utiliser 2 socles, en assemblage linéaire.

If 1 plinth is not long enough, it will be necessary to use 2 plinths, in linear assembly.

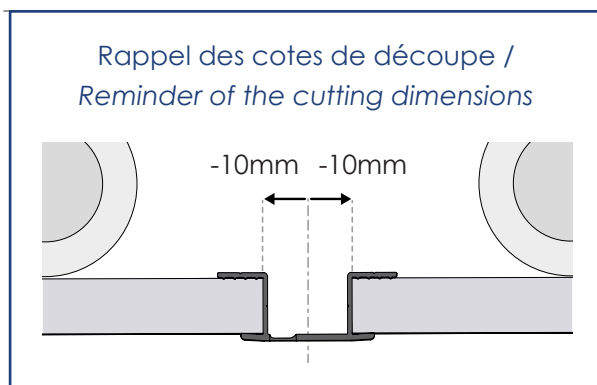
### Méthode 1 : assemblage classique / Method 1 : Classic assembly



Astuce esthétique : Aligner le profil d'assemblage des socles avec un des éléments. /  
Esthetics tip : Align the profile for plinths assembly with one of the elements.



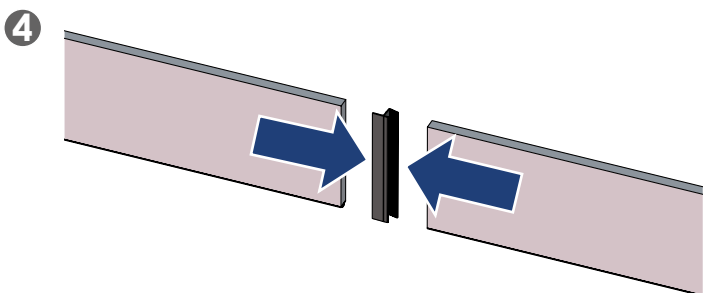
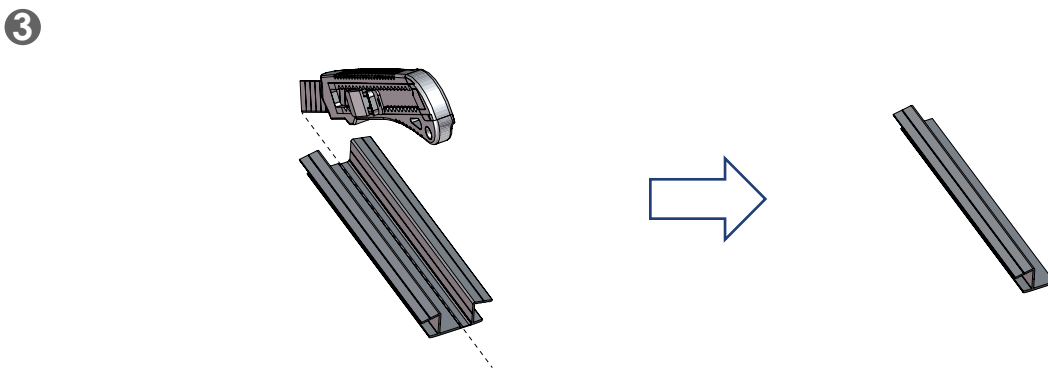
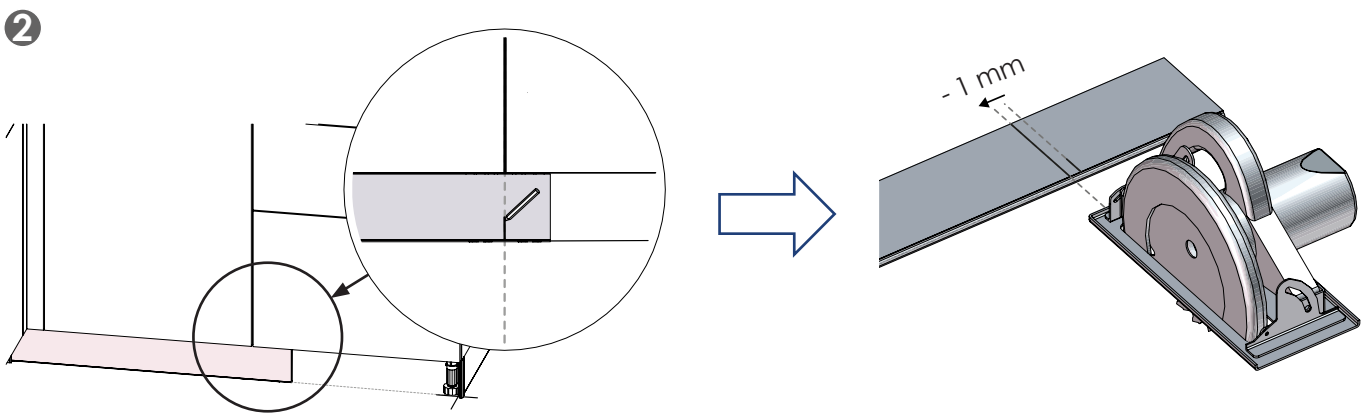
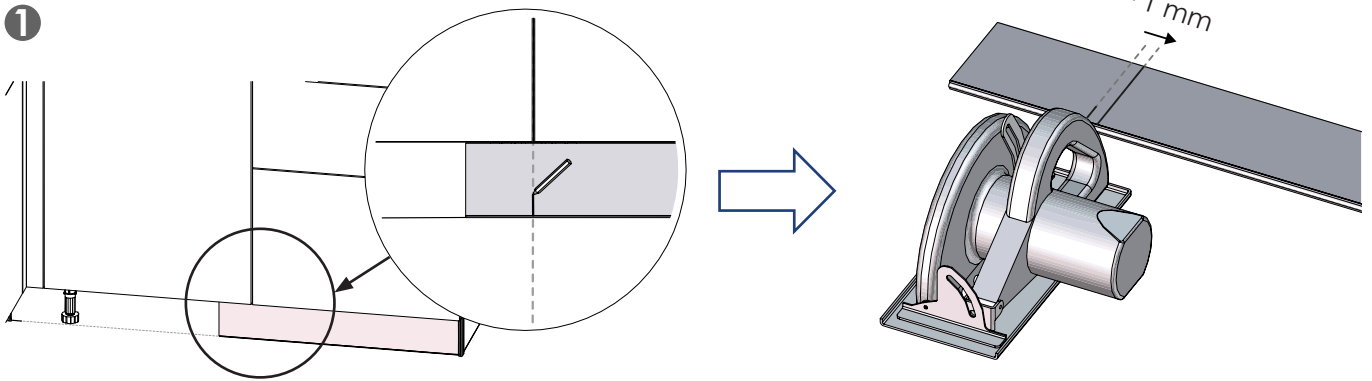
Ne pas visser à cette étape.  
Do not screw at this step.



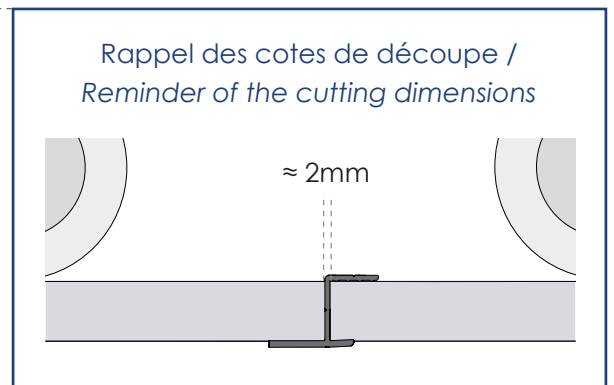
Méthode 2 : assemblage avec découpe du profil / Method 2 : assembly with profile cutting



Astuce esthétique : Aligner le profil d'assemblage des socles avec un des éléments. /  
Esthetics tip : Align the profile for plinths assembly with one of the elements.



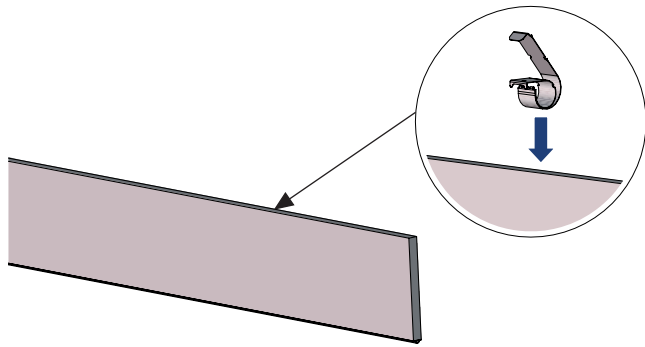
Ne pas visser à cette étape.  
Do not screw at this step.





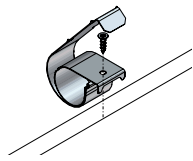
### 3 Assemblage final / Final assembly

#### A Assemblage des clips de socle / Plinth clips assembly

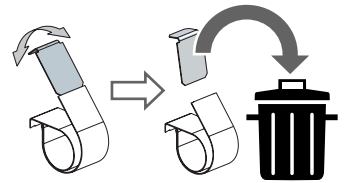


Positionner un clip tous les 80 cm environ /  
Put a clip every 80 cm approximately

Il est possible d'utiliser une vis pour fixer les clips sur le dessus du socle / It is possible to use a screw to fix the clips on the top of the plinth

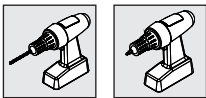


Pour les retours de socle, casser l'extrémité des clips / For plinth returns, break the clips end

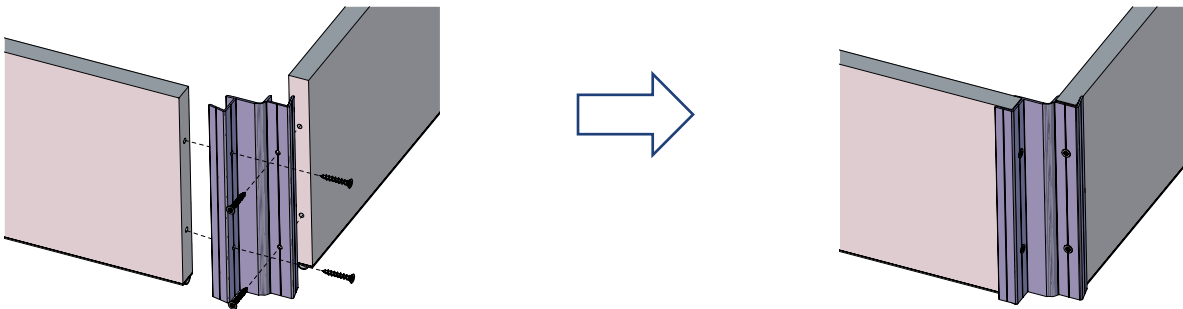


#### B Fixation des profils / Profiles fixing

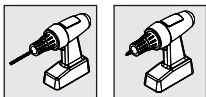
Méthode 1 : vissage dans le chant / Method 1 : screwing in the edge



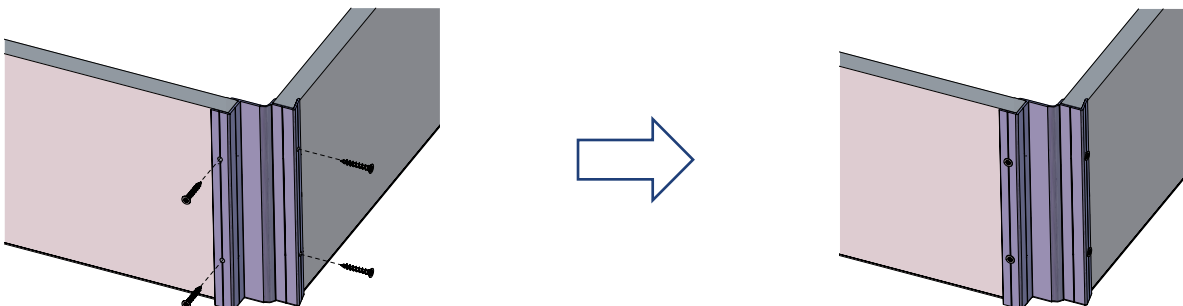
Pré-perçage et vissage /  
Pre-drilling and screwing



Méthode 2 : vissage sur l'arrière / Method 2 : screwing on the back



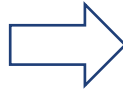
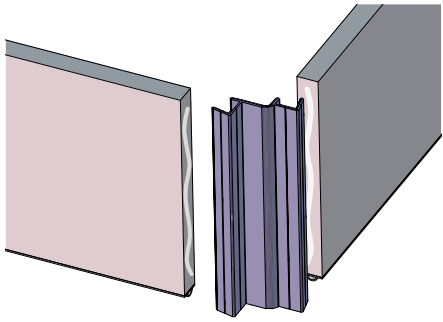
Pré-perçage et vissage /  
Pre-drilling and screwing



Méthode 3 : collage / Method 3 : gluing



Collage / Gluing



Maintien /Support

