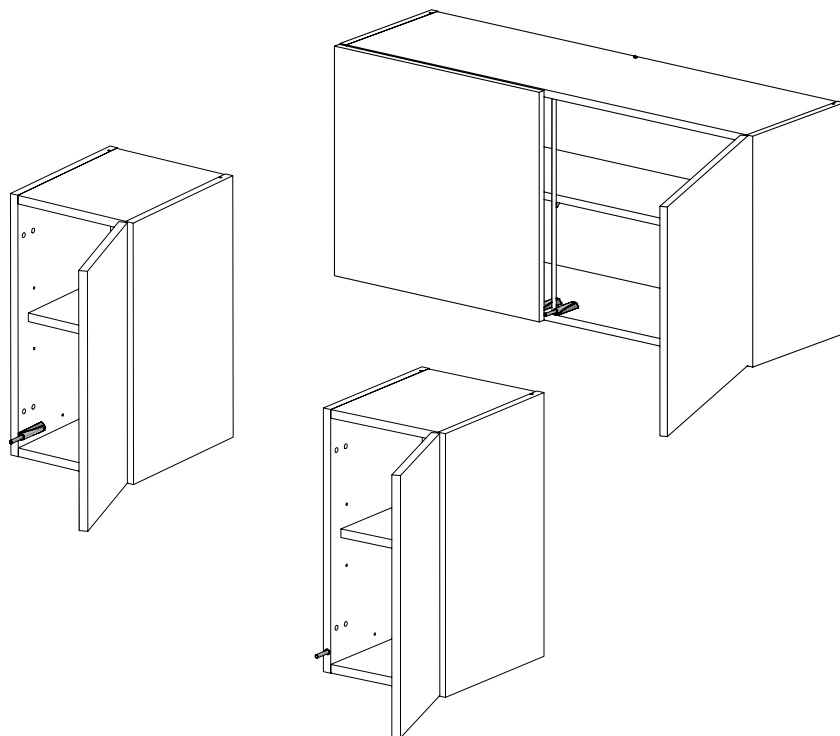


# Touche-lâche

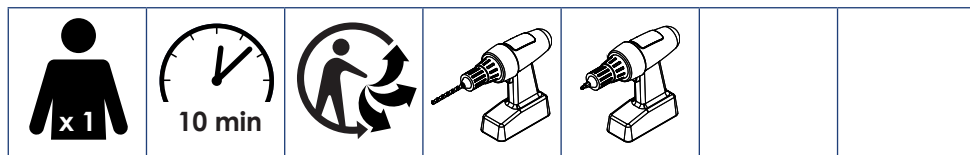
## Push button

Instructions de montage

Mounting instructions



Nécessaire / Necessary



Références / References

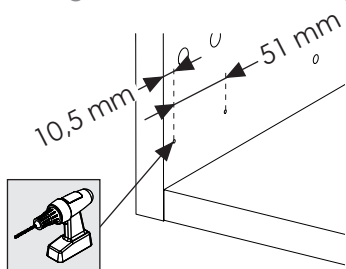
TL18C	TL18V	
-------	-------	--

# 1 Montage standard / Standard assembly

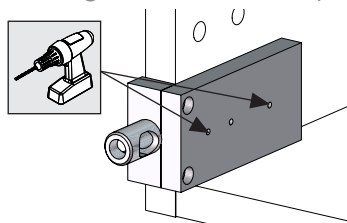
A positionner sur les côtés, le fond ou le plafond du meuble / To position on sides, top or bottom of the furniture

1

Sans gabarit / Without template

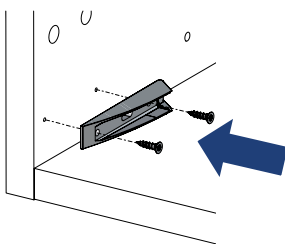


Avec gabarit / With template

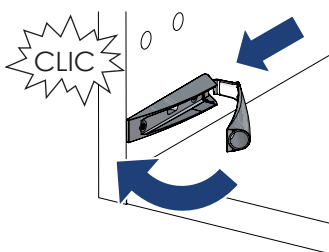


Gabarit **TL18GP** disponible sur commande / **TL18GP** template available on order

2

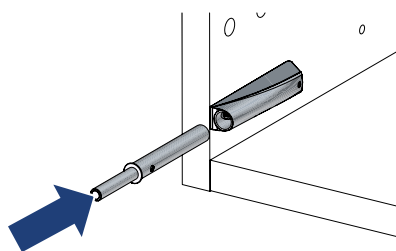


3



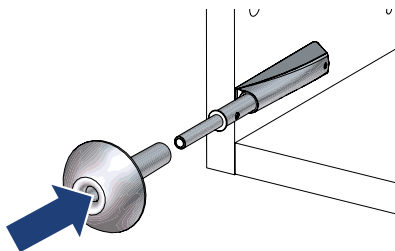
4

Sans outil / Without tool



Si besoin, aidez-vous en poussant avec la porte lorsqu'elle sera installée / If needed, help yourself by pushing with the door when installed

Avec outil / With tool

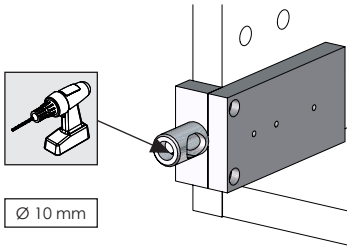


Outil **TL18OI** disponible sur commande / **TL18OI** tool available on order

## 2 Montage dans le chant / Assembly in the edge

A positionner dans le chant des côtés, du fond ou du plafond / To position on sides, top or bottom edge

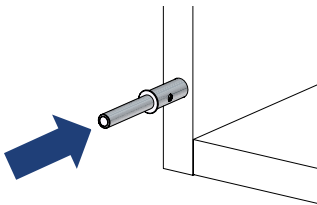
1



Gabarit **TL18GP** disponible sur commande / **TL18GP** template available on order

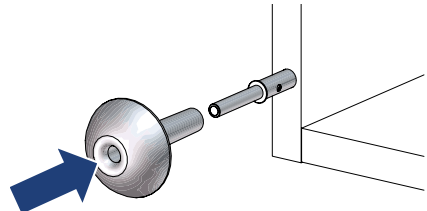
2

Sans outil / Without tool



Si besoin, aidez-vous en poussant avec la porte lorsqu'elle sera installée / If needed, help yourself by pushing with the door when installed

Avec outil / With tool

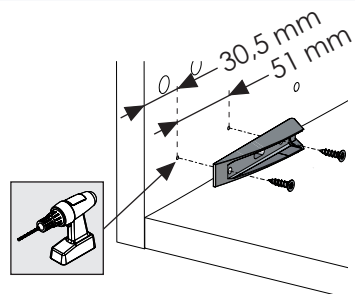
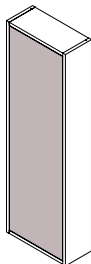


Outil **TL18OI** disponible sur commande / **TL18OI** tool available on order

## 3 Porte affleurante / Flush door

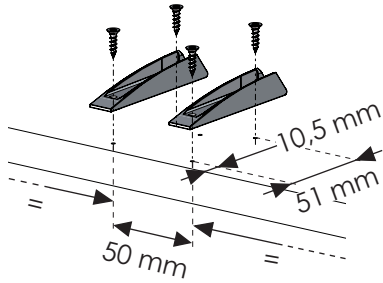


Montage standard uniquement, interdit dans le chant / Only standard assembly, forbidden in the edge

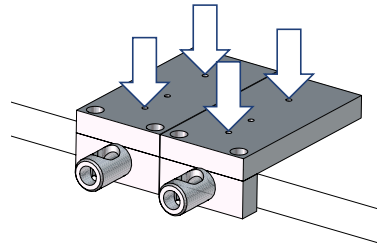


## 4 Meuble à 2 portes / 2 doors furniture

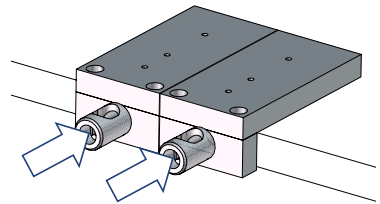
Sans gabarit / Without template



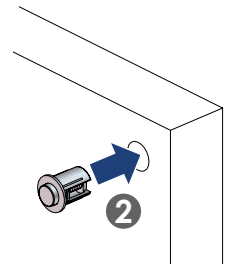
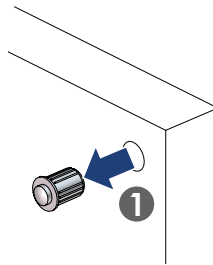
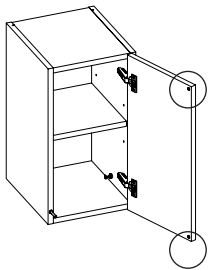
Avec gabarits / With templates



ou / or



## 5 Remplacement des butées / Replacement of the stops



## 6 Réglage / Adjustment

