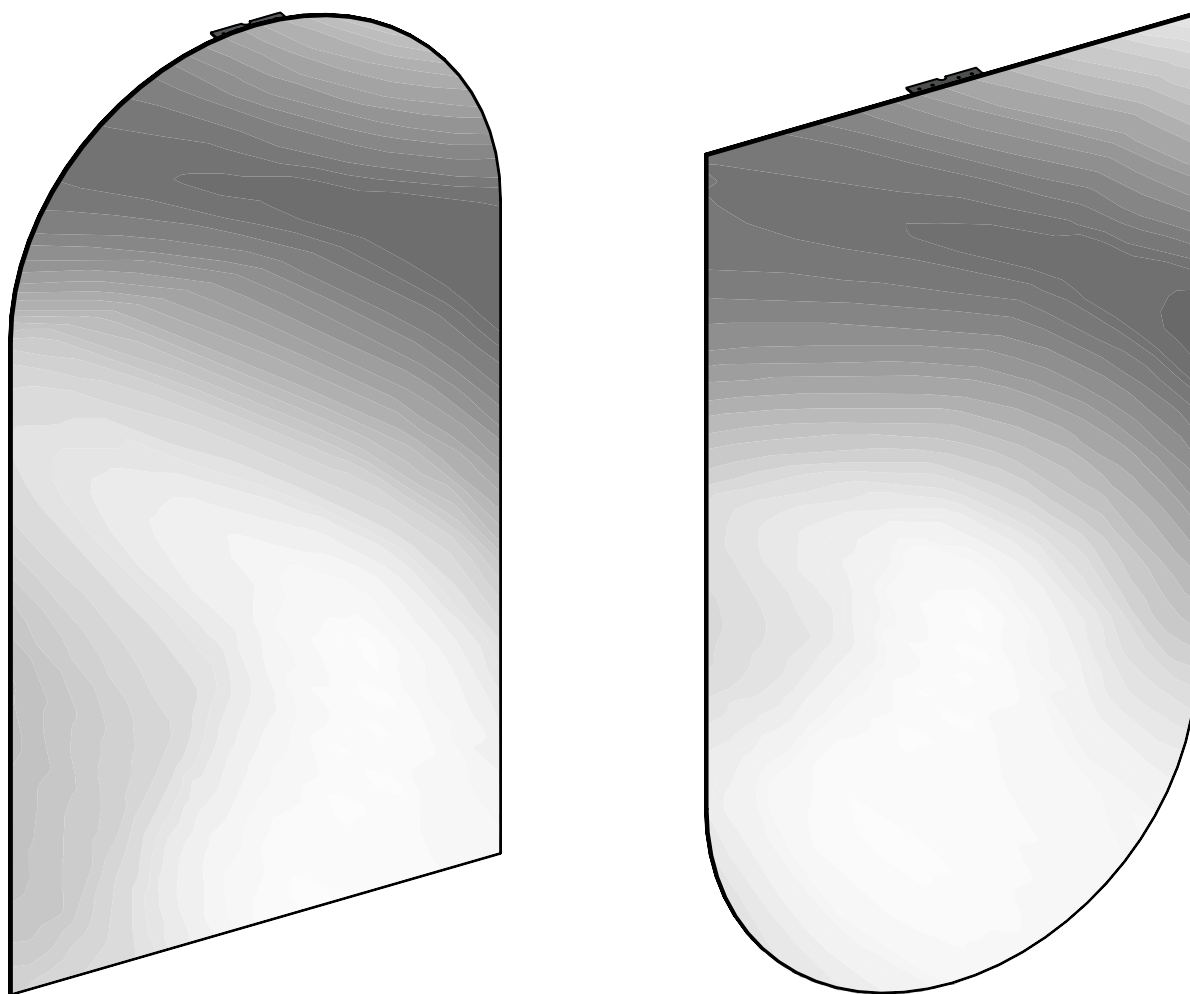


Miroir Arche

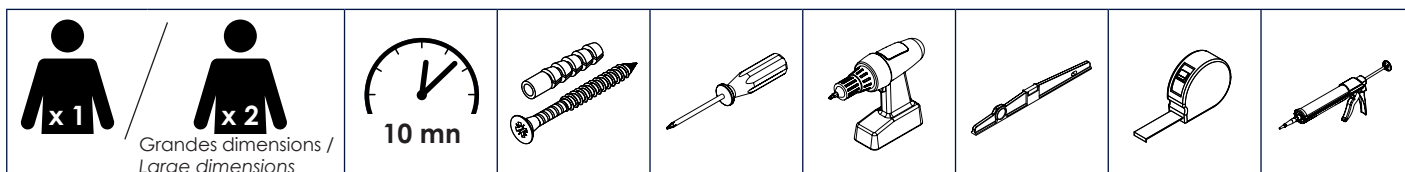
Arch mirror

Instructions de montage
Mounting instructions

Le miroir peut se positionner dans les deux sens. Le montage reste similaire. /
The mirror can be positioned in either direction. Assembly remains similar.



Nécessaire / Necessary



Références / References

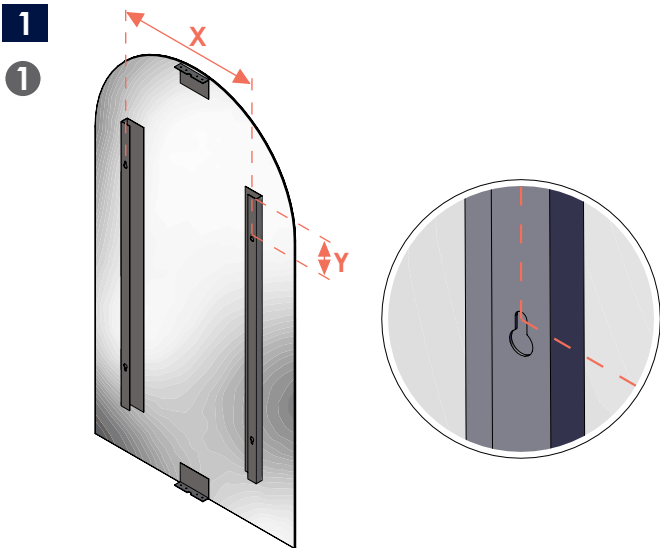
MIA6940	29409065	MIA11060	29409066	MIA11080	29409067



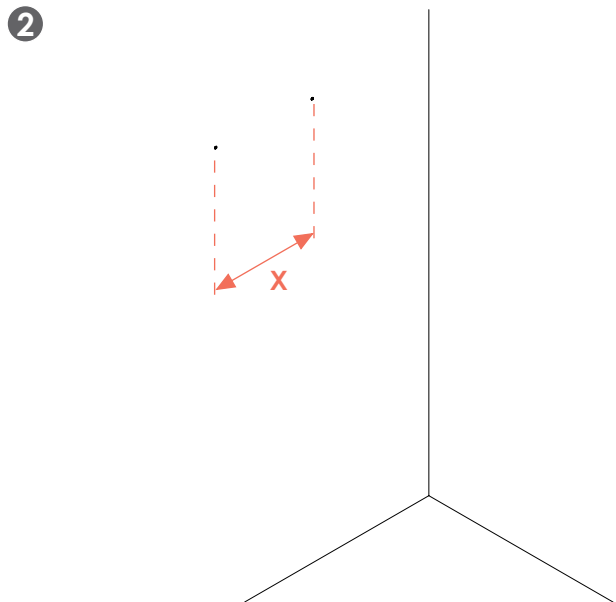
FR

ÉLÉMENTS D'EMBALLAGE
À SÉPARER ET À DÉPOSER
DANS LE BAC DE TRI

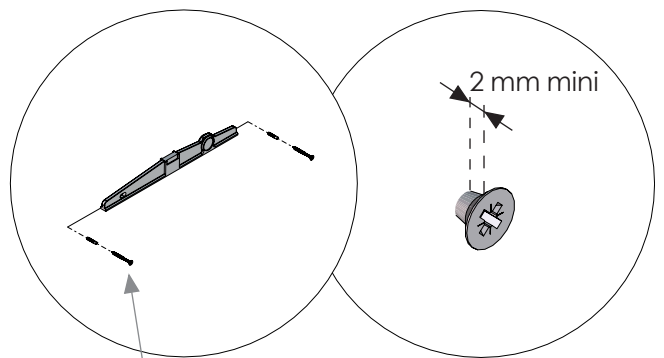
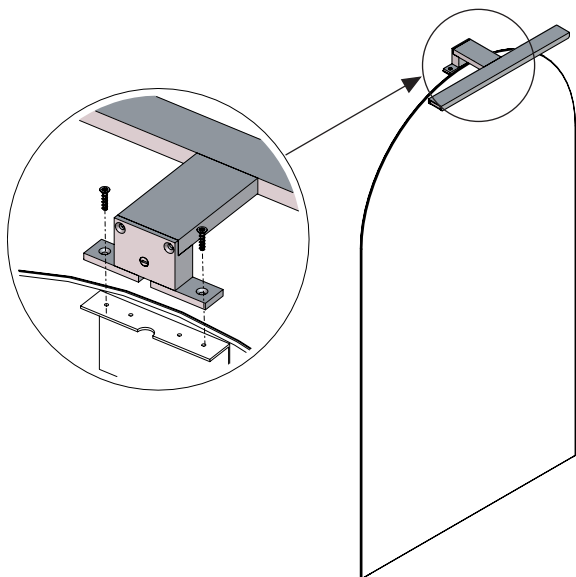




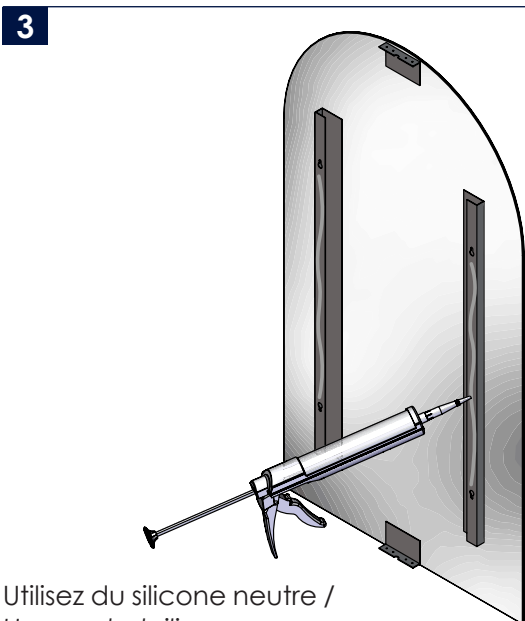
Mesurez les dimensions **X** et **Y** pour positionner le miroir à la bonne distance. / Measure the **X** and **Y** dimensions to position the mirror at the right distance.



2 Applique optionnelle / Optional wall light



Vis et chevilles non fournies, à adapter selon le support / Screws and dowels not supplied, depending on the support



Utilisez du silicone neutre / Use neutral silicone

