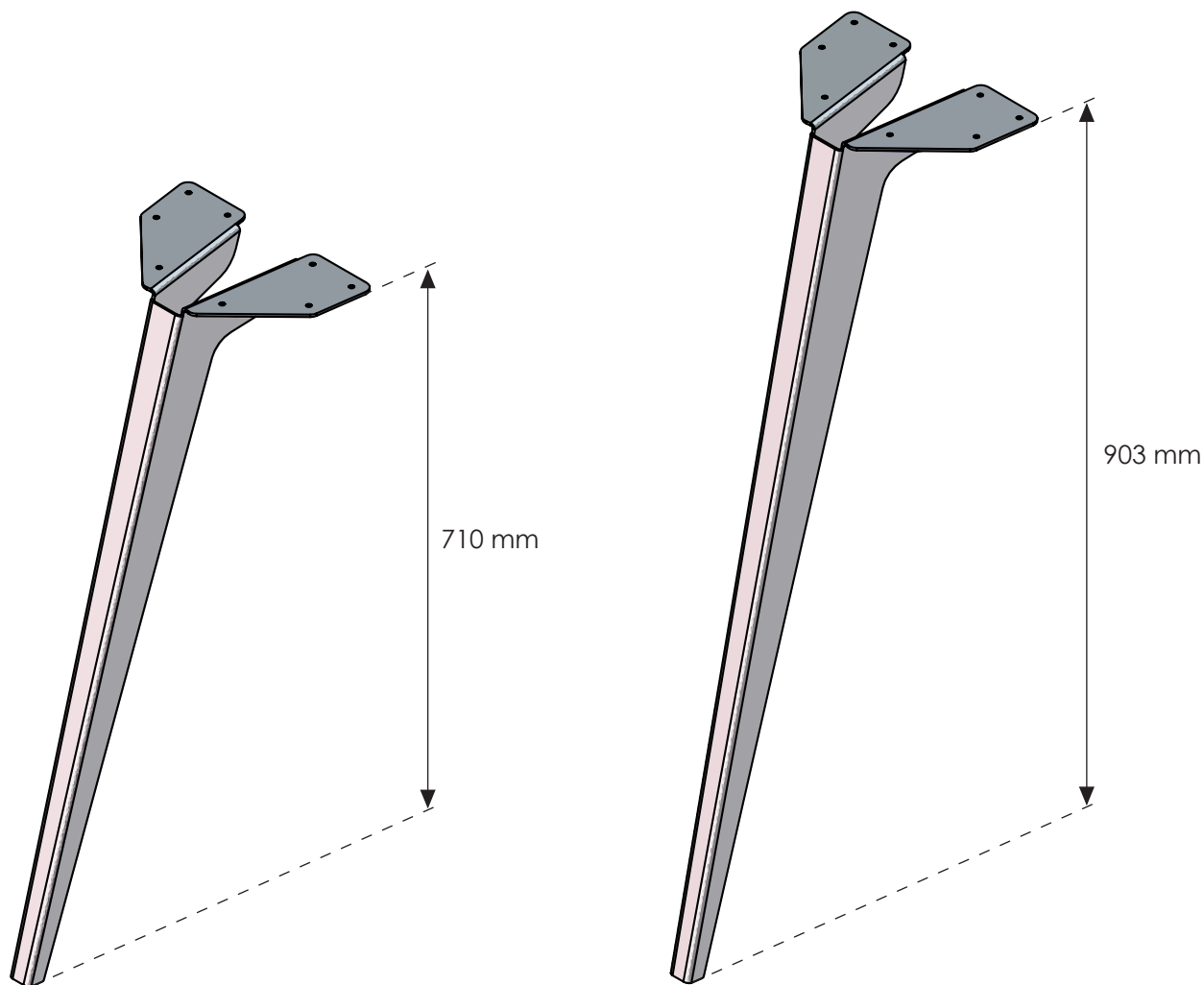




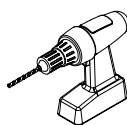

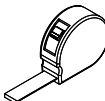
Piètement Éclat

Éclat leg

Instructions de montage
Mounting instructions



Nécessaire / Necessary

 x 1	 10 min									
---	--	---	---	---	--	--	--	--	--	--

Références / References

MEEC71NR	09489090	MEEC71WH	09489092	MEEC71OR	09489094
MEEC90NR	09489091	MEEC90WH	09489093	MEEC90OR	09489095

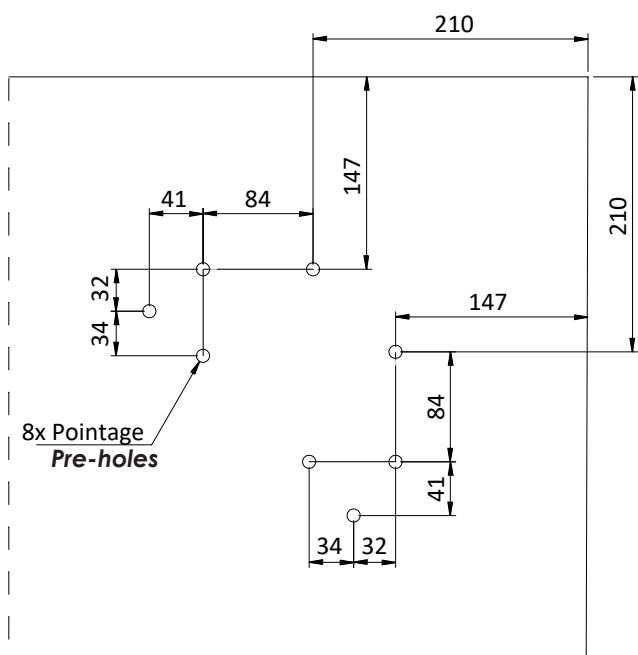


FR
ÉLÉMENTS D'EMBALLAGE
À SÉPARER ET À DÉPOSER
DANS LE BAC DE TRI



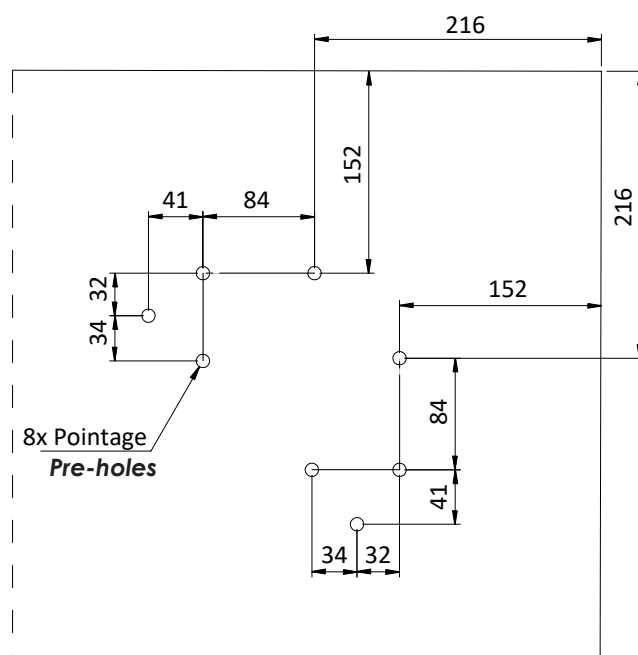
1 Perçage du plateau / Table-top drilling

A Pied de hauteur **710 mm** / **710 mm high leg**



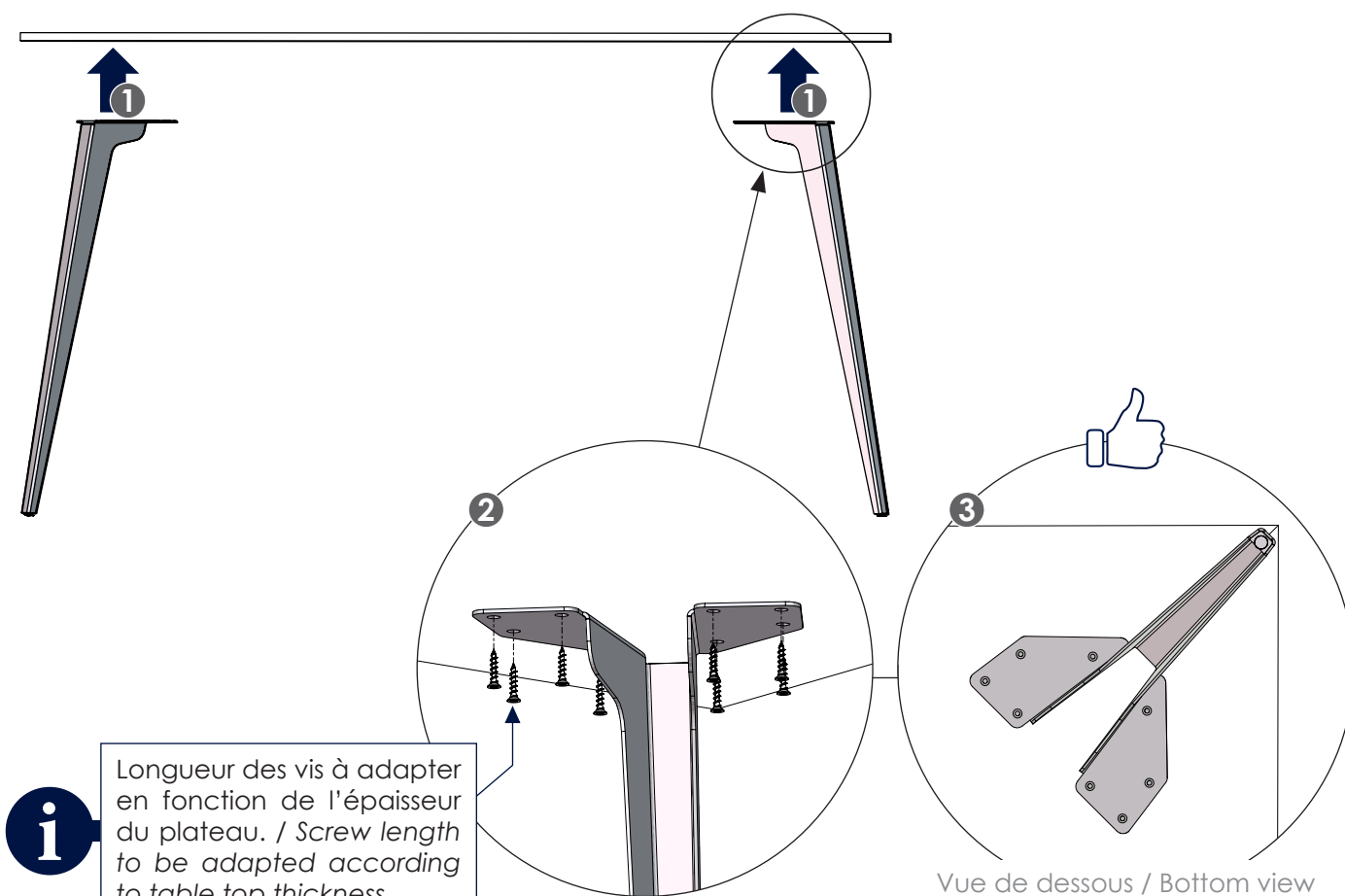
Vue de dessous / Bottom view

B Pied de hauteur **903 mm** / **903 mm high leg**



Vue de dessous / Bottom view

2 Fixation des pieds / Leg fixing



Vue de dessous / Bottom view