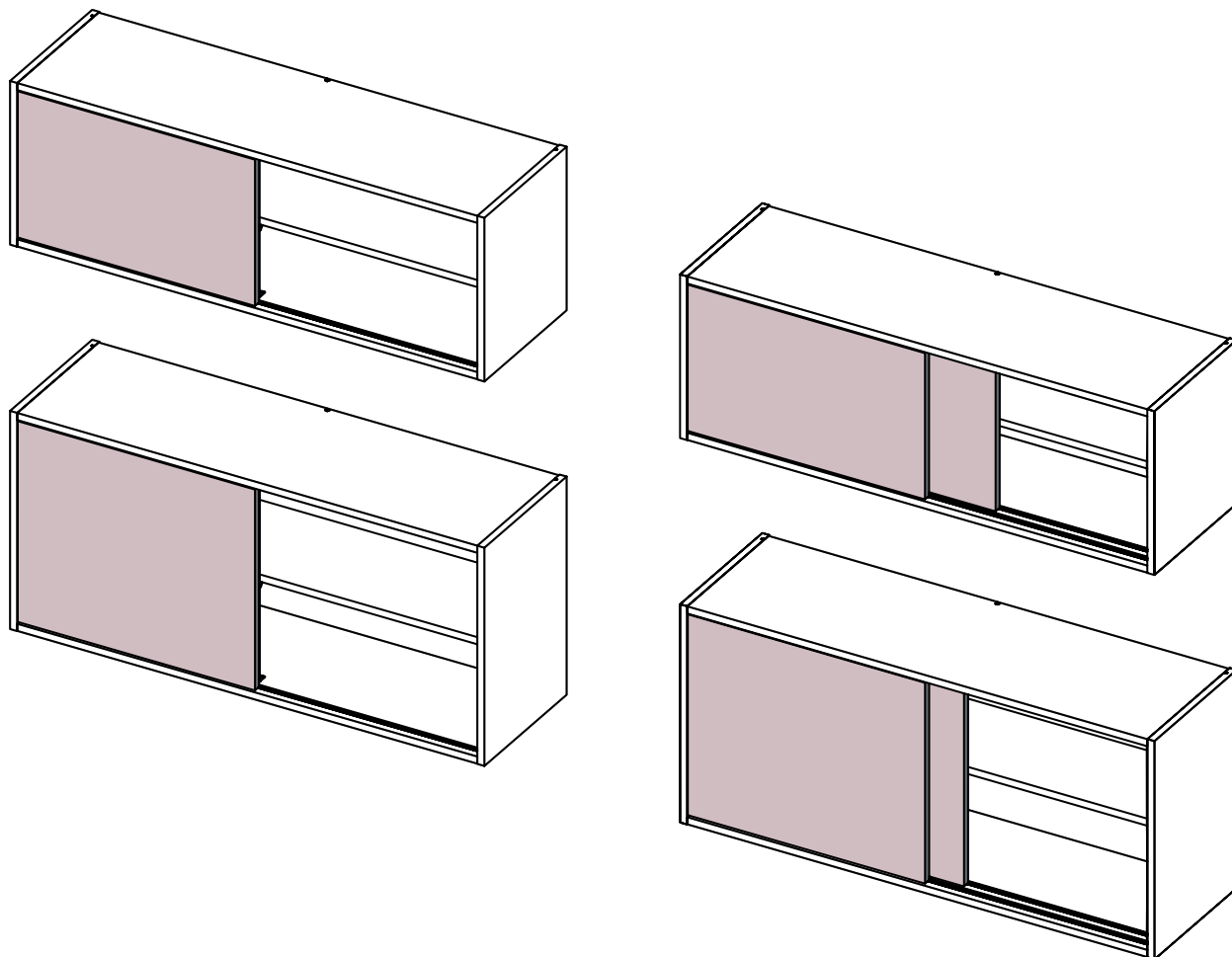


Façades coulissantes simple et double voies pour meuble haut



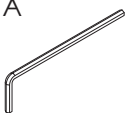
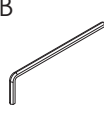
Simple and double rails sliding doors for wall unit

Instructions de montage

Mounting instructions



Nécessaire / Necessary

| | | | | | | | | | |
|---|--|---|---|--|--|--|--|--|--|
|  x 1 |  15 min | A  3 mm | B  1,5 mm | | | | | | |
|---|--|---|---|--|--|--|--|--|--|

Références / References

| | | | |
|-----------|-----------|-----------|-----------|
| HCL41PG90 | HCL42PG90 | HCL51PG90 | HCL52PG90 |
| HCL41PG10 | HCL42PG10 | HCL51PG10 | HCL52PG10 |
| HCL41PG12 | HCL42PG12 | HCL51PG12 | HCL52PG12 |


FR


 **Donnez ou recyclez vos meubles.**

 Association *ou*  Magasin *ou*  Déchèterie

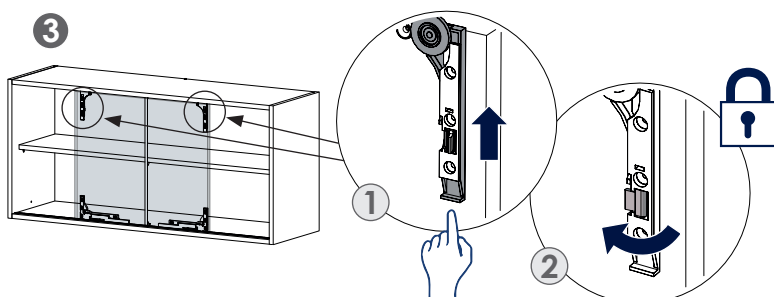
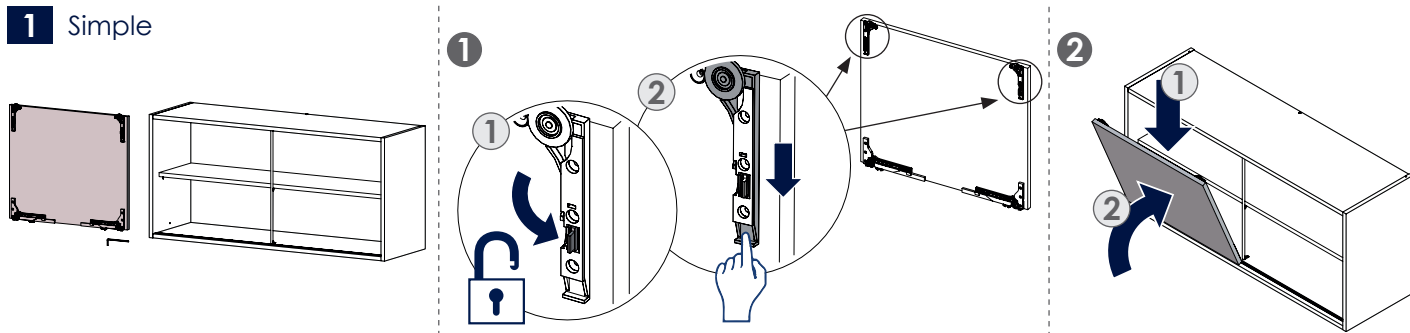
<https://quefairedemesdechets.fr>

FR

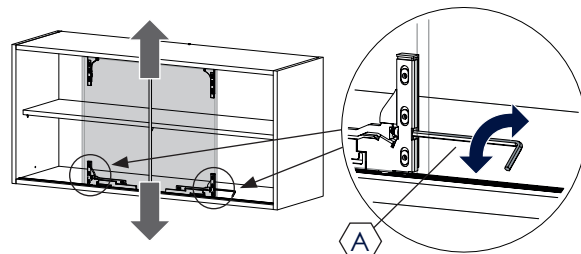
 **ÉLÉMENTS D'EMBALLAGE À SÉPARER ET À DÉPOSER DANS LE BAC DE TRI**



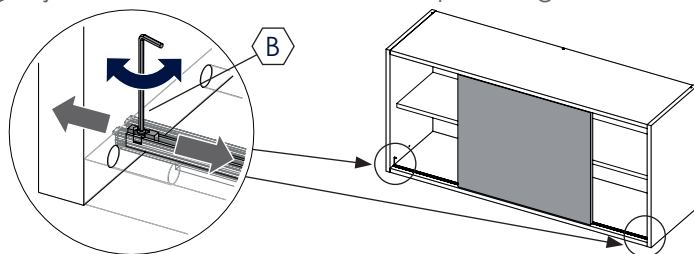
1 Simple



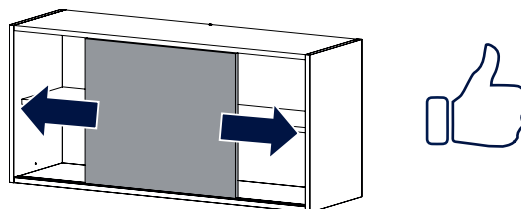
4 Réglages de hauteur / Height tuning



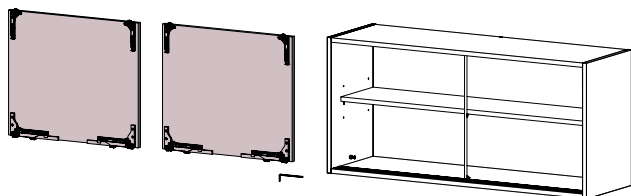
5 Ajustement des butées / End stops tuning



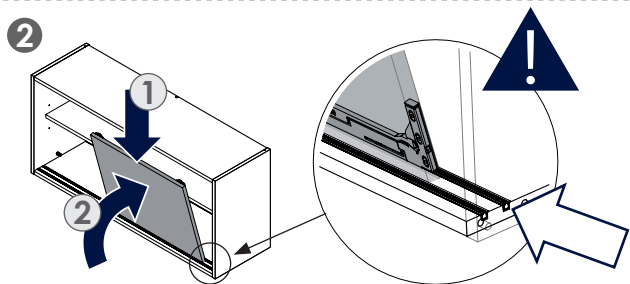
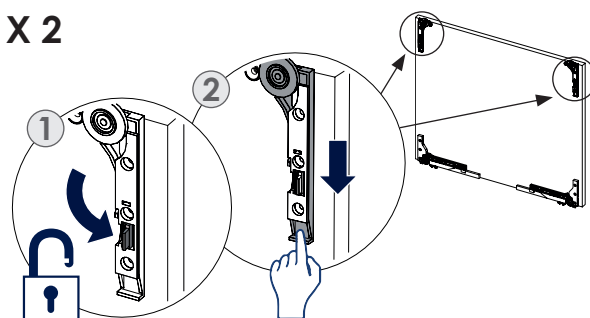
6



2 Double

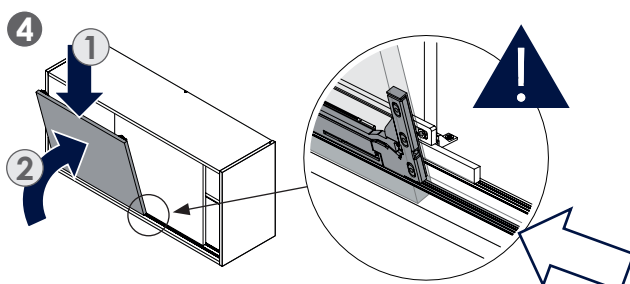


1 X 2



3

Répétez les étapes de la section **1** de **3** à **6**.
/ Repeat steps of section **1** from **3** to **6**.



5

Répétez les étapes de la section **1** de **3** à **6**.
/ Repeat steps of section **1** from **3** to **6**.