

The screenshot shows the status bar of an AT&T mobile phone. At the top, there is a 'BACK' button with a left arrow, the text 'ALL 4G', and icons for signal strength, cellular service, and battery. Below this, a table displays carrier, frequency, RSRQ, and RSRP values for different carriers. The carriers listed are AT&T, VERIZON, and T-MOBILE. The values for each carrier are: AT&T (739.0 MHz, -9.0 dB, -77 dBm), VERIZON (751.0 MHz, -9.0 dB, -90 dBm), and T-MOBILE (2140.0 MHz, -11.0 dB, -92 dBm). At the bottom, there is a 'PAGE' button with a right arrow.

CARRIER	FREQ MHz	RSRQ dB	RSRP dBm
AT&T	739.0	-9.0	-77
AT&T	1035.0	-6.0	-87
VERIZON	751.0	-9.0	-90
T-MOBILE	2140.0	-11.0	-92
AT&T	1967.5	-8.0	-92
VERIZON	887.5	-10.0	-95

OCTOPUS™

4G LTE SIGNAL METER

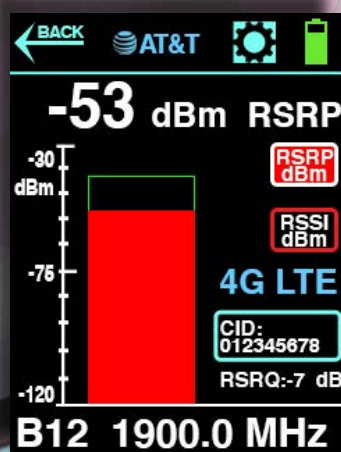
AT&T

verizon✓

T-Mobile

ALL 4G

**OPTIONAL DIRECTION  
FINDING ANTENNA  
AVAILABLE**

[illegible]

+1 732-548-3737  
www.bvsystems.com  
sales@bvsystems.com

**CELEBRATING  
50 YEARS  
IN BUSINESS!**



**Berkeley**  
Varitronics Systems  
Wireless Detection



# OCTOPUS™

## 4G LTE SIGNAL METER INSTALLATION TOOL



**4G BANDS SUPPORTED:** B12 / B17 (700), B2 (1900), B5 (850), B13 (700), B4 (AWS 1700)

**RECEIVER MODES:** Passive only (does not transmit nor require a SIM card)

**4G LTE MEASUREMENTS:** RSRP, RSRQ, RSSI

**GENERAL SPECIFICATIONS:**

<b>Antenna:</b>	Multi-band SMA 50 ohm
<b>Controls:</b>	Color touchscreen
<b>USB Port:</b>	Trickle charges unit
	Updates firmware
	Export measurements to Windows PC for further analysis
<b>Alerts:</b>	Audible beeps and vibrations
<b>Warm Up Time:</b>	< 1 minute
<b>Runtime:</b>	>10 hours on a full charge
<b>Power:</b>	Internal Li-Po battery system
	12V jack for external power & charging dock
<b>Display</b>	320 x 240 resistive LCD touchscreen
<b>Weight:</b>	1 lbs.
<b>Dimensions:</b>	5.5" H x 3" W x 1.25" L

**INCLUDED ACCESSORIES:**

Rugged Carrying Case  
AC Fast Charging Dock  
(1) Omni-Directional Multi-Band SMA Antenna

**OPTIONAL ACCESSORIES:**

**DF Antenna:** Direction Finding Antenna



New Octopus Pro Kit includes rugged transport case and direction finding antenna for pinpointing distant cellular networks

Octopus can be fast charged via it's own cradle or trickle charged via Mini USB

Handy for wireless installations:



*Fire Safety Alert Systems*



*EV Charging Stations*



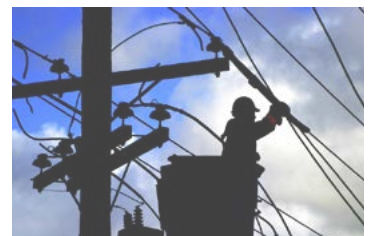
*Ridesharing Services*



*Vending Machines*



*Security Alarm Systems*



*Utility Networks*



+1 732-548-3737  
www.bvsystems.com  
sales@bvsystems.com