

# 1974 Statistics

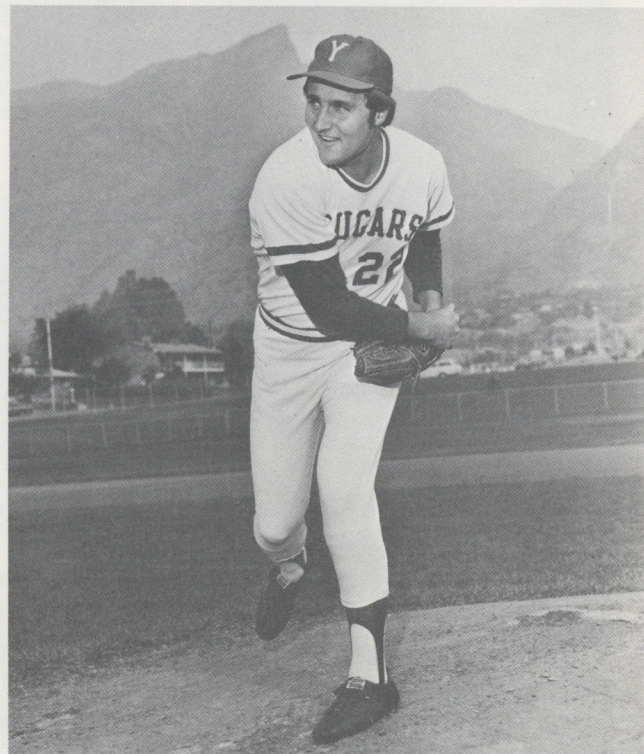
46 Games (29-17) Overall, (12-7) WAC

PLAYER, POS.	G	AB	R	H	TB	2B	3B	HR	SB	SAC	HBP	BB	SO	RBI	PO	A	E	FLD PCT.	SLUG PCT.	AVG
Ron Hill, 2B	41	153	51	61	91	13	8	1	21	1	..	32	12	14	108	102	7	.940	.595	.399
Reed Pew, 1B	43	161	36	59	111	12	4	10	4	1	3	12	24	42	286	38	11	.967	.689	.366
Lee Iorg, CF	46	185	49	66	113	19	3	8	15	6	..	17	12	56	94	5	3	.971	.611	.357
Dee Herren, OF	25	61	15	21	44	4	..	7	4	3	2	18	7	19	27	2	1	.967	.721	.344
Jim Talbot, RF	37	129	29	42	64	7	1	5	1	1	..	26	11	24	59	1	5	.923	.496	.326
Dave Coon, C-DH	43	150	39	45	79	7	1	7	8	4	3	35	21	40	48	4	4	.929	.527	.300
Dave Heid, OF	24	70	20	21	40	4	..	5	2	1	3	4	4	20	12	4	1	.941	.571	.300
Glenn Garvin, SS	40	128	21	37	63	10	2	4	..	1	1	14	19	29	67	82	27	.847	.492	.289
Doug Coon, 3B	43	136	39	38	73	10	..	10	5	2	4	26	23	36	103	62	8	.954	.537	.279
Mike Moss, C	24	78	16	19	22	1	1	..	..	4	2	6	4	7	144	7	2	.987	.282	.244
Jeff Tidwell, LF	35	131	18	31	45	4	2	2	2	3	3	11	15	18	42	2	3	.936	.344	.237
Jeff Bills, C	20	60	14	14	24	4	..	2	..	1	1	7	5	13	91	9	..	1.000	.400	.233
Greg Hatch, 3B	21	55	9	12	22	2	1	2	1	2	3	6	15	13	11	34	6	.880	.400	.218
<b>Pitcher</b>																				
Keven Balse	18	..	..	..	..	..	..	..	..	..	..	..	..	..	1	2	..	1.000	..	..
Dave Nelson	15	..	..	..	..	..	..	..	..	..	..	..	..	..	9	20	3	.906	..	..
Craig Hunt	14	..	..	..	..	..	..	..	..	..	..	..	..	..	6	13	..	1.000	..	..
Lynn Allan	14	..	..	..	..	..	..	..	..	..	..	..	..	..	3	7	..	1.000	..	..
Terry Sheehan	11	..	..	..	..	..	..	..	..	..	..	..	..	..	1	8	2	.818	..	..
Brady Wood	10	..	..	..	..	..	..	..	..	..	..	..	..	..	3	5	1	.888	..	..
Kelly Davis	8	..	..	..	..	..	..	..	..	..	..	..	..	..	5	..	..	1.000	..	..
Parke Hansen	7	2	..	..	..	..	..	..	..	..	..	..	..	..	2	2	..	1.000	..	..
BYU TOTALS	46	1555	369	479	807	102	21	63	65	26	24	217	171	339	1127	456	83	.950	.519	.308
OPP TOTALS	46	1502	250	399	580	42	11	40	19	31	17	152	251	..	..	..	..	..	.386	.266

Pitcher	G	GS	GC	IP	AB	R	ER	H	2B	3B	HR	BB	SO	HB	WP	BK	W	L	ERA
Doug Coon (R)	1	..	..	1	3	..	..	..	..	..	..	..	1	..	..	..	..	..	0.00
Dave Nelson (R)	15	10	7	73 <sup>2</sup> / <sub>3</sub>	304	37	24	66	8	3	5	45	44	..	4	1	7	2	2.93
Terry Sheehan (R)	11	6	4	53	216	28	27	49	2	5	4	18	39	3	..	..	4	0	4.58
Craig Hunt (R)	14	14	6	86 <sup>1</sup> / <sub>3</sub>	333	50	44	79	6	2	10	16	72	2	5	1	6	6	4.59
Keven Balse (R)	19	..	6	29 <sup>2</sup> / <sub>3</sub>	135	20	16	31	6	1	2	13	24	1	1	..	4	0	4.85
Lynn Allan (L)	14	13	3	67 <sup>2</sup> / <sub>3</sub>	295	52	40	87	8	2	7	31	41	2	7	..	4	5	5.32
Kelly Davis (L)	8	1	3	22	99	17	15	26	5	..	4	9	9	..	1	..	2	1	6.14
Brady Wood (R)	10	..	4	25	118	26	20	36	5	..	4	17	16	3	3	..	1	1	7.20
Parke Hansen (R)	6	2	2	18 <sup>1</sup> / <sub>3</sub>	83	20	15	22	4	..	4	6	9	1	1	..	1	2	7.36
BYU TOTALS	46	..	..	378 <sup>1</sup> / <sub>3</sub>	1587	247	197	395	44	11	40	145	258	15	22	2	29	17	4.69
OPP TOTALS	46	..	..	369 <sup>2</sup> / <sub>3</sub>	1653	369	317	476	102	21	63	225	177	23	24	..	17	29	7.72



Co-captains Doug Coon and Ron Hill



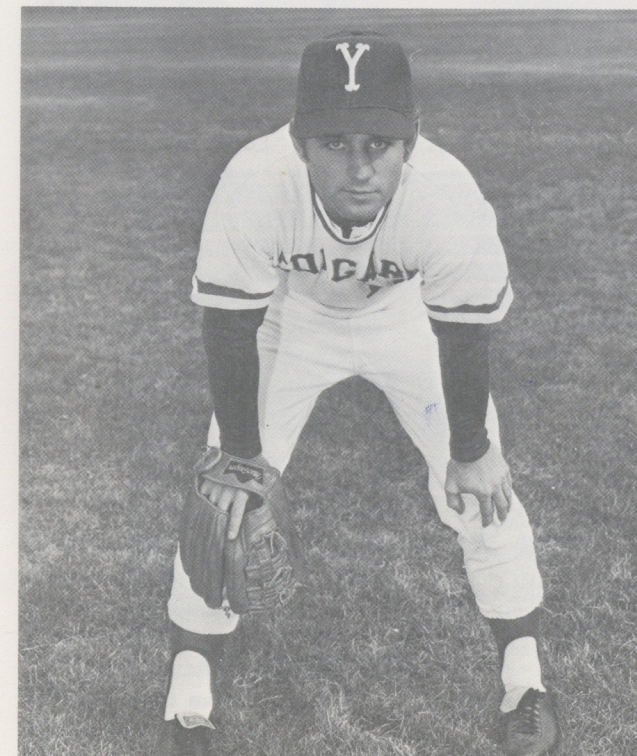
Dave Nelson

# WAC Game Stats

WAC Games Only — 19 Games (12-7)

PLAYER, POS.	G	AB	R	H	TB	2B	3B	HR	SB	SAC	HBP	BB	SO	RBI	PO	A	E	FLD PCT.	SLUG PCT.	AVG	
Reed Pew, 1B	19	71	20	29	54	5	..	6	1	4	1	8	11	27	105	13	4	.967	.761	.408	
Jim Talbot, RF	16	55	17	22	34	6	..	2	1	1	..	15	6	15	22	..	4	.846	.618	.400	
Lee Iorg, CF	19	81	27	31	58	7	1	6	8	3	1	10	3	33	38	3	1	.976	.716	.383	
Ron Hill, 2B	18	70	25	26	41	6	4	..	10	1	..	19	3	4	64	52	4	.967	.586	.371	
Dave Coon, C-DH	18	67	23	23	38	3	..	4	1	..	1	21	8	21	4	..	1	.800	.567	.343	
Glenn Garvin, SS	17	55	11	18	32	5	..	3	..	1	1	7	8	12	31	34	13	.833	.582	.327	
Dee Herren, OF	11	29	8	9	17	2	..	2	1	1	1	9	4	7	15	2	..	1.000	.586	.310	
Doug Coon, 3B	19	68	24	21	43	3	..	7	1	1	3	13	11	26	52	34	5	.945	.632	.309	
Jeff Tidwell, LF	14	55	1	14	18	1	1	1	1	..	2	7	8	10	22	1	1	.958	.327	.255	
Mike Moss, C	12	46	10	11	14	1	1	..	..	1	..	3	3	3	79	3	2	.976	.304	.239	
Jeff Bills, C	6	23	7	5	12	1	..	2	..	..	1	2	2	7	37	4	..	1.000	.523	.217	
Greg Hatch, 3B	9	27	3	5	9	1	..	1	..	1	..	4	7	8	5	14	4	.826	.333	.185	
Dave Heid, OF	10	26	8	3	9	..	..	2	..	..	1	2	1	3	3	1	1	.800	.346	.115	
<b>Pitcher</b>																					
Craig Hunt	7	..	..	..	..	..	..	..	..	..	..	..	..	..	2	5	..	1.000	..	..	
Dave Nelson	6	..	..	..	..	..	..	..	..	..	..	..	..	..	3	11	3	.824	..	..	
Keven Balse	5	..	..	..	..	..	..	..	..	..	..	..	..	..	1	..	..	1.000	..	..	
Lynn Allan	5	..	..	..	..	..	..	..	..	..	..	..	..	..	1	4	..	1.000	..	..	
Terry Sheehan	4	..	..	..	..	..	..	..	..	..	..	..	..	..	1	6	1	.875	..	..	
Brady Wood	4	..	..	..	..	..	..	..	..	..	..	..	..	..	1	1	..	.500	..	..	
Kelly Davis	1	..	..	..	..	..	..	..	..	..	..	..	..	..	..	..	..	..	.000	..	..
BYU TOTALS	19	675	193	217	381	44	6	36	25	9	11	120	75	176	478	190	45	.937	.564	.321	
OPP TOTALS	19	693	126	199	288	17	8	22	9	15	5	58	106	114	474	187	32	.954	.416	.287	

Pitcher	G	GS	GC	IP	AB	R	ER	H	2B	3B	HR	BB	SO	HB	WP	BK	W	L	ERA
Keven Balse (R)	5	..	5	10	46	4	3	10	4	..	..	3	6	..	1	..	2	0	2.70
Terry Sheehan (R)	4	3	4	32	122	12	12	29	1	4	3	5	21	2	..	..	4	0	3.37
Dave Nelson (R)	6	4	2	27 <sup>1</sup> / <sub>3</sub>	117	24	14	29	1	1	2	22	16	..	4	..	1	1	4.61
Lynn Allan (L)	5	5	2	35 <sup>2</sup> / <sub>3</sub>	158	29	21	47	3	1	4	13	24	1	5	..	2	1	5.29
Craig Hunt (R)	7	7	3	42	179	39	35	56	5	2	7	12	31	..	5	..	3	4	7.50
Brady Wood (R)	4	..	3	11	53	13	11	23	3	..	3	3	8	1	..	..	0	1	9.00
Kelly Davis (L)	1	..	..	2 <sup>1</sup> / <sub>3</sub>	13	5	5	5	..	..	3	1	2	..	..	..	..	..	19.31
BYU TOTALS	19	..	..	160 <sup>1</sup> / <sub>3</sub>	682	123	99	188	17	6	22	59	108	4	15	..	12	7	5.55
OPP TOTALS	19	..	..	158	727	191	159	217	43	6	36	115	77	12	11	..	..	12	9.05



Brad Hawkins



Dave Heid