



BYU Women's Volleyball

Week 6: LMU/USD

2011 QUICK FACTS

UNIVERSITY INFORMATION

| | |
|--------------------|---|
| Location | Provo, Utah 84602 |
| Elevation | 4,553 feet |
| Enrollment | 33,278 (Daytime) |
| Founded | October 15, 1875 |
| Owned: | The Church of Jesus Christ of Latter-day Saints |
| Nickname | Cougars |
| Mascot | Cosmo |
| Colors | Dark blue and white |
| Conference | West Coast Conference |
| Arena | Smith Fieldhouse (5,000) wood floor |
| BYU President | Cecil O. Samuelson (Utah, 1970) |
| Athletics Director | Tom Holmoe (BYU, 1983) |

VOLLEYBALL INFORMATION

| | |
|------------------------------|-------------------------------------|
| Head Coach | Shawn Olmstead (BYU, 2005) |
| Office Phone | 801-422-2808 |
| Assistant Coaches | Heather Olmstead (Utah State, 2001) |
| | Emillie Toone (Utah, 2009) |
| Olmstead Record at BYU: | 12-3 |
| Olmstead Career Record | Same |
| BYU's All-Time Record: | 1,072-327-5 (.764) |
| 2010 Record | 14-16 |
| 2010 MWC Record | 9-7 (4th) |
| 2010 NCAA | None |
| 2010 Final Ranking | No. 86 |
| Starters Returning/Lost | 4/3 |
| Letterwinners Returning/Lost | 8/4 |
| Other Players Returning/Lost | 4/2 |
| Newcomers | 6 |

ATHLETIC COMMUNICATIONS

| | |
|------------------------------|---|
| Primary Volleyball Contact | Rachel Hawks |
| Phone | 801-422-8999 |
| Cell | 801-380-9668 |
| E-mail | wvolleyball_sid@byu.edu |
| Secondary Volleyball Contact | Kyle Chilton |
| Phone | 801-422-4909 |
| E-mail | kyle_chilton@byu.edu |
| Homepage | www.byucougars.com |
| Pressrow Phone | 520-227-7720 |
| Mailing Address | BYU Athletic Communications 30 Smith Fieldhouse Provo, Utah 84602 |

QUICK REFERENCE

BYU 2011 Record: 13-3

BYU WCC Record: 2-0

2011 BYU WOMEN'S VOLLEYBALL SCHEDULE

| Date | Opponent | Site | Time/Result |
|------------|---------------------------|--------------------|-------------|
| Aug. 23 | Blue and White Match | PROVO, UT | 5 p.m. |
| Aug. 26-27 | BYU Nike Invitational | PROVO, UT | |
| Aug. 26 | No. 8 Illinois | | L, 3-0 |
| Aug. 27 | UC Santa Barbara | | W, 3-1 |
| Aug. 27 | Saint Mary's | | L, 3-0 |
| Aug. 30 | Weber State | PROVO, UT | W, 3-0 |
| Sept. 2-3 | Kansas State Tournament | Manhattan, KS | |
| Sept. 2 | Idaho | | W, 3-0 |
| Sept. 2 | Georgia Southern | | W, 3-1 |
| Sept. 3 | Kansas State | | W, 3-0 |
| Sept. 7 | BYU-Hawaii | PROVO, UT | W, 3-0 |
| Sept. 9-10 | Utah Invitational | Salt Lake City, UT | |
| Sept. 9 | UC Riverside | | W, 3-0 |
| Sept. 10 | Eastern Michigan | | W, 3-1 |
| Sept. 10 | Utah | | W, 3-0 |
| Sept. 13 | Utah State | Logan, UT | W, 3-0 |
| Sept. 16 | Cal State Fullerton | Fullerton, CA | L, 3-1 |
| Sept. 17 | Cal State Northridge | Northridge, CA | W, 3-1 |
| Sept. 22 | Saint Mary's* | PROVO, UT | W, 3-0 |
| Sept. 29 | Loyola Marymount* | Los Angeles, CA | W, 3-2 |
| Oct. 1 | San Diego* | San Diego, CA | 1 p.m. |
| Oct. 6 | Santa Clara* | PROVO, UT | 7 p.m. |
| Oct. 8 | Pepperdine* | Malibu, CA | 1 p.m. |
| Oct. 15 | Portland* | Portland, OR | 1 p.m. |
| Oct. 17 | Gonzaga* | Spokane, WA | 7 p.m. |
| Oct. 20 | Pepperdine* | PROVO, UT | 7 p.m. |
| Oct. 22 | San Diego*-Dig Pink Match | PROVO, UT | 7 p.m. |
| Oct. 27 | San Francisco* | San Francisco, CA | 6 p.m. |
| Nov. 3 | Loyola Marymount* | PROVO, UT | 7 p.m. |
| Nov. 5 | San Francisco* | PROVO, UT | 7 p.m. |
| Nov. 10 | Saint Mary's* | Moraga, CA | 7 p.m. |
| Nov. 17 | Gonzaga* | PROVO, UT | 7 p.m. |
| Nov. 19 | Portland* | PROVO, UT | 7 p.m. |

* denotes West Coast Conference matches.

** all times listed are local to site and subject to change.

2011 NUMERICAL ROSTER

| No. | Name | Pos. | Ht. | Cl. | Exp. | Hometown (Previous School) |
|-----|------------------------|-------|------|-----|------|--|
| 1 | Katie Vaughn | OH | 6-2 | FR | HS | El Dorado Hills, Calif. (Oak Ridge HS) |
| 2 | Heather Hannemann | S | 5-8 | JR | HS | Alpine, Utah (Lone Peak HS) |
| 4 | Kathryn LeCheminant | MB | 6-2 | SO | RS | Layton, Utah (Layton HS) |
| 5 | Mariah Katoa | MB | 6-0 | FR | HS | Layton, Utah (Layton HS) |
| 6 | Kendalyn Hartsock | L | 5-6 | JR | HS | Kalispell, Mont. (Flathead HS) |
| 7 | Hannah Robison | OH | 6-0 | FR | HS | Orem, Utah (Orem HS) |
| 10 | Camilla Phillips | OH/RS | 5-11 | SR | TR | South Jordan, Utah (Salt Lake CC) |
| 11 | Coriann Clark | DS/L | 5-10 | SO | HS | Bozeman, Mont. (Bozeman HS) |
| 12 | Jessica Jardine | OH | 6-1 | SO | HS | American Fork, Utah (American Fork HS) |
| 13 | Kimberly Dahl | OH | 6-0 | FR | HS | Pleasant Grove, Utah (Pleasant Grove HS) |
| 14 | Christie Carpenter | OH | 6-1 | SR | 1L | Cedar Hills, Utah (Lone Peak HS) |
| 15 | Nicole Warner | MB | 6-2 | JR | RS | Rigby, Idaho (Rigby HS) |
| 17 | Tia Withers | DS/L | 5-9 | FR | HS | Beaverton, Ore. (Sunset HS) |
| 18 | Kemi Bonner | S | 6-1 | SO | TR | Pleasant Grove, Utah (SLCC) |
| 19 | Jennifer Hamson | RS | 6-6 | SO | HS | Pleasant Grove, Utah (Pleasant Grove HS) |
| 20 | Casey Thurston | OH | 6-1 | SR | 1L | West Valley City, Utah (Granger HS) |
| 21 | Taeja Afalava Toleafoa | DS/OH | 5-11 | SO | HS | South Jordan, Utah (Bingham HS) |
| 22 | Kimberli Boswell | MB/RS | 6-2 | SO | HS | Aloha, Ore. (Aloha HS) |

Head Coach: Shawn Olmstead (BYU 2005) – First Season

Assistant Coaches: Heather Olmstead, Emillie Toone

Trainer: Dan Graham

Director of Volleyball Operations: Giuseppe Vinci

2011 ALPHABETICAL ROSTER

| Name | No. | Pos. |
|------------------------|-----|-------|
| Kimberli Boswell | 22 | MB/RS |
| Christie Carpenter | 14 | OH |
| Coriann Clark | 11 | DS/L |
| Kimberly Dahl | 13 | OH |
| Jennifer Hamson | 19 | RS |
| Heather Hannemann | 2 | S |
| Kendalyn Hartsock | 6 | L |
| Jessica Jardine | 12 | OH |
| Mariah Katoa | 5 | MB |
| Kathryn LeCheminant | 4 | MB |
| Kemi Bonner | 18 | S |
| Camilla Phillips | 10 | OH/RS |
| Hannah Robison | 7 | OH |
| Casey Thurston | 20 | OH |
| Taeja Afalava Toleafoa | 21 | DS/OH |
| Katie Vaughn | 1 | OH |
| Nicole Warner | 15 | MB |
| Tia Withers | 17 | DS/L |

ROSTER BREAKDOWN

Returning Starters (4)

| Name | Pos. | Ht. | Cl. | Pct. | KPG | DPG | BPG |
|--------------------|------|-----|-----|-------|------|------|-------|
| Christie Carpenter | OH | 6-1 | SR | .126 | 2.61 | 1.95 | .560 |
| Jennifer Hamson | RS | 6-6 | SO | .261 | 2.76 | .830 | .830 |
| Kendalyn Hartsock | L | 5-6 | JR | -.100 | .020 | 3.61 | .420* |
| Nicole Warner | MB | 6-2 | JR | .225 | 1.67 | .610 | 1.32 |

* Assists per game

Starters Lost (3)

| Name | Pos. | Ht. | Cl. | Pct. | KPG | DPG | BPG |
|------------------|-------|------|-----|------|-------|------|------|
| Christina Measom | RS | 6-0 | SR | .185 | 2.30 | .430 | .580 |
| Kiana Rogers | S | 5-11 | SR | .203 | 9.80* | 2.62 | .550 |
| Stephanie Snow | MB/OH | 6-4 | SR | .352 | 2.63 | .460 | .750 |

* Assists per game

Returning Letterwinners (8)

| Name | Pos. | Ht. | Cl. | Pct. | KPG | DPG | BPG |
|------------------------|-------|------|-----|-------|------|------|-------|
| Christie Carpenter | OH | 6-1 | SR | .126 | 2.61 | 1.95 | .560 |
| Coriann Clark | OH/DS | 5-9 | SO | -.015 | .09 | 1.33 | .000 |
| Jennifer Hamson | RS | 6-6 | SO | .261 | 2.76 | .830 | .830 |
| Kendalyn Hartsock | L | 5-6 | JR | -.100 | .020 | 3.61 | .420* |
| Jessica Jardine | OH | 6-1 | SO | .014 | 1.32 | .790 | .110 |
| Kathryn LeCheminant | MB | 6-2 | SO | .221 | 1.18 | .210 | .820 |
| Taeja Afalava Toleafoa | OH/DS | 5-11 | SO | .068 | .980 | 1.17 | .150 |
| Nicole Warner | MB | 6-2 | JR | .225 | 1.67 | .610 | 1.32 |

* Assists per game

Letterwinners Lost (4)

| Name | Pos. | Ht. | Cl. | Pct. | KPG | DPG | BPG |
|------------------|-------|------|-----|------|-------|------|-------|
| Christina Measom | RS | 6-0 | SR | .185 | 2.30 | .430 | .580 |
| Kiana Rogers | S | 5-11 | SR | .203 | 9.80* | 2.62 | .550 |
| Stephanie Snow | MB/OH | 6-4 | SR | .352 | 2.63 | .460 | .750 |
| Brooke Soon | S | 5-11 | JR | .250 | .020 | 1.97 | .390* |

* Assists per game

Others Returning (4)

| Name | Pos. | Ht. | Cl. | Pct. | KPG | DPG | BPG |
|-------------------|-------|------|-----|------|------|------|------|
| Kimberli Boswell | MB/RS | 6-2 | SO | .129 | .830 | .170 | .670 |
| Heather Hannemann | S | 5-8 | JR | .308 | .310 | 1.06 | .250 |
| Camilla Phillips | RS | 5-11 | SR | | | | |
| Casey Thurston | OH | 6-1 | SR | | | | |

* Assists per game

Others Lost (2)

| Name | Pos. | Ht. | Cl. | Pct. | KPG | DPG | BPG |
|----------------|------|-----|-----|------|------|------|------|
| Courtney Honka | L/DS | 5-8 | JR | .000 | .000 | 1.25 | .000 |
| Lauren Sagers | RS | 6-0 | JR | | | | |

Newcomers (6)

| Name | Pos. | Ht. | Cl. |
|----------------|------|-----|-----|
| Kimberly Dahl | OH | 6-0 | FR |
| Mariah Katoa | MB | 6-0 | FR |
| Kemi Bonner | S | 6-1 | SO |
| Hannah Robison | OH | 6-0 | FR |
| Katie Vaughn | OH | 6-2 | FR |
| Tia Withers | DS/L | 5-9 | FR |

Geographic Breakdown

CALIFORNIA (1)

Katie Vaughn

IDAHO (1)

Nicole Warner

MONTANA (2)

Coriann Clark
Kendalyn Hartsock

OREGON (2)

Kimberli Boswell
Tia Withers

UTAH (12)

Taeja Afalava Toleafoa
Christie Carpenter
Kimberly Dahl
Jennifer Hamson
Heather Hannemann
Jessica Jardine
Mariah Katoa
Kathryn LeCheminant
Kemi Bonner
Camilla Phillips
Hannah Robison
Casey Thurston

Cougars Set Out for California

PROVO, Utah—Securing its first win in league play, the BYU women's volleyball team continues its march through the West Coast Conference with matchups at Loyola Marymount Thursday and No. 18 San Diego Saturday.

Thursday's match begins at 7 p.m. PDT in Los Angeles, while the Saturday match begins at 1 p.m. PDT in San Diego.

"We're excited for our first road trip in the West Coast Conference," BYU head coach Shawn Olmstead said. "We believe both LMU and USD are great opponents and they have our full attention as we travel to California."

The Cougars (12-3) took down Saint Mary's 3-0 (25-14, 25-17, 25-13) in their first appearance in WCC competition. Opposite hitter Jennifer Hamson once again recorded a double-figure evening, her 13th of the season, with 12 kills on .550 hitting, also contributing six blocks and four service aces. Middle blocker Nicole Warner threw down 10 total blocks, nine assisted and one solo, to set a new season high. Senior outside hitter Casey Thurston set a season high of eight kills off the bench and had five blocks.

Hamson leads BYU with 214 kills, averaging 4.28 per set on .328 hitting. She also contributes 1.16 blocks per set and has 21 service aces on the season. Junior libero Kendalyn Hartsock has 230 total digs at 4.60 per set and Warner has 88 blocks. Setter Heather Hannemann reached 526 assists in the last match.

LMU, currently undefeated in conference play with a 2-0 record, is 8-6 on the season. The Cougars look to continue their undefeated all-time record (2-0) against LMU.

At the helm of the Lions' offense is Jasmine Rankins, who puts up 3.42 kills per set. Litara Keil has recorded 42 blocks this season, .89 per

set, to lead the Lions and Betsi Metter has 224 digs at 4.67 per set.

Reigning WCC champion USD fell 3-0 to San Francisco last week, putting the Toreros in fifth place in the conference standings going into the second week of WCC play. USD still holds the best season record in the league at 14-1 on the season.

Leading the Toreros, Amber Tatsch has 167 kills. Chloe Ferrari is close behind with 155 kills. Katie Hoekman and Kandiss Anderson head the defense with 53 blocks and 189 digs, respectively.

BYU hasn't faced USD since 1996, when BYU took home the victory. The series is tied 1-1.



2011 Season Outlook

With five new recruits and a new head coach, the BYU women's volleyball team sets out to make its mark on a new conference in the 2011 season. Led by senior Christie Carpenter and junior Nicole Warner, the Cougars enter the new season ready to play with veteran experience and fresh talent.

"We're excited about the season," head coach Shawn Olmstead said. "The girls responded well during our double days in fall camp and we're eager to get out and start competing. They're effort during camp was great, so we're pleased and anxious to start this season."

Heading into the West Coast Conference, BYU is undefeated in its series' against four of the eight new conference foes, has a winning record against one and is tied with two. Four of this season's WCC members finished in the top 100 teams of 2010.

"This season we have good depth that we haven't had in the past, which gives us more options" Olmstead said. "We have returning experience at key positions and we anticipate those girls to excel and lead this group. The experience is a huge plus going forward and experience in matches is crucial."

BYU Athletics' new partnership with BYUtv will allow 12 of the 14 home matches to be aired on BYUtv.

Breakdown by Position:

Middle Blocker

In 2010, junior starter Nicole Warner ranked third in the Mountain West Conference for blocks and No. 40 in the nation with 1.32 per game and 162 total. Warner also contributed 205 kills and 503 attacks.

"With two years of experience already, Nicole is a great blocker," Olmstead said. "She has good ability to move side-to-side and she's be-

2011 BYU Women's Volleyball

coming more and more skilled at the other positions crucial to hers."

Kathryn LeCheminant contributed 33 kills and 23 blocks in her first year playing for the Cougars. Fellow sophomore Jessica Jardine totaled 37 kills, 142 attacks and 22 digs in her rookie season.

Kimberli Boswell rounds off the list of returning middle blockers after in seven matches last season.

The Cougars are adding freshman Mariah Katoa, who qualified for the Junior Olympics and took Layton High School to a region championship in 2008.

Outside Hitter

Senior outside hitter Christie Carpenter placed second on the team with 313 season kills and led the team with 1,074 attacks in 2010. Carpenter recorded 234 digs for the Cougars and 67 blocks.

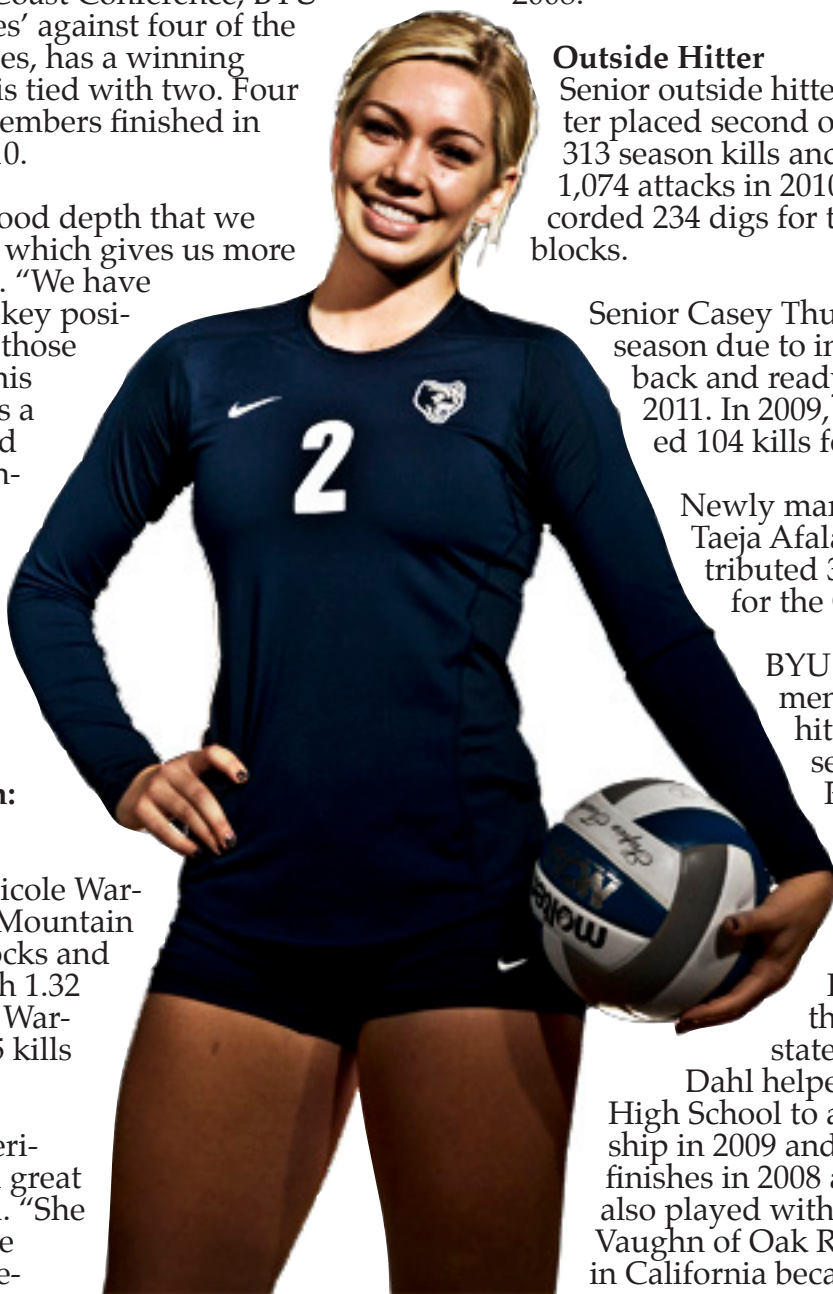
Senior Casey Thurston sat out last season due to injury, but will be back and ready for action in 2011. In 2009, Thurston recorded 104 kills for 1.58 per set.

Newly married sophomore Taea Afalava Toleafoa contributed 39 kills and 47 digs for the Cougars in 2010.

BYU adds three freshmen to the outside hitter position this season. Hannah

Robison was one of the top 100 recruits in the nation coming out of high school and helped Orem High School to a third-place finish in state in 2010. Kimberly

Dahl helped Pleasant Grove High School to a state championship in 2009 and second-place finishes in 2008 and 2010. She also played with Club Utah. Katie Vaughn of Oak Ridge High School in California became the all-time ca-



2011 Season Outlook

reer kill leader for the high school after the 2010 season with over 1,362 kills.

Opposite Hitter

At opposite hitter, BYU's returners totaled more than 100 kills each during the 2010 season. Sophomore Jennifer Hamson helped the Cougars to their 9-7 conference record with 644 attacks, 246 kills, 74 digs and 74 blocks.

"Jen has worked hard this off-season," Olmstead said. "With one year more experience, we anticipate she'll continue to grow and get better with each opportunity on the court."

Hamson is joined by senior Camilla Phillips, who totaled 116 kills and 49 blocks last season.

Setter

After backing up and learning from star setter Kiana Rogers last season, junior setter Heather Hannemann will take over for 2011. Hannemann had 71 assists, 17 digs and 13 attacks in the 2010 season.

Kemi McFarland joins the roster at setter after helping Salt Lake Community College to a 28-8 record and undefeated home record in 2010.

Defensive Specialist/Libero

As the Cougar Club Y Award's Walk-On of the Year, Kendalyn Hartsock led the team with 411 digs and added 48 assists last season. Hartsock averaged 3.92 digs per set during conference play, placing her third in the league for digs.

Sophomore Coriann Clark contributed 128 digs for BYU in 2010.

Joining the Cougars, freshman Tia Withers, a Beaverton, Ore. native, helped Sunset High School to back-to-back third-place finishes in state. Withers also competed in beach volleyball, winning five beach championships and two beach doubles championships.

Schedule

Five teams on this year's schedule qualified for the 2010 NCAA Division I Championships and four finished in the top 50 in the NCAA.

To kick off the season, the Cougars host No. 8 Illinois, UC Santa Barbara and WCC opponent Saint Mary's in the BYU Nike Invitational.

2011 BYU Women's Volleyball

Following a matchup with Weber State, the team heads to Kansas for the Kansas State Tournament to take on Idaho, Georgia Southern and Kansas State.

BYU finishes tournament play with the Utah Invitational in Salt Lake City, where the Cougars will face the Utes, UC Riverside and Eastern Michigan.

Matchups with BYU-Hawaii, Cal State Fullerton and Cal State Northridge round off pre-conference play.

League play starts at home with the season's second match against Saint Mary's. The Cougars are 2-2 against the Gaels, with their last matchup being in 2007.

BYU hits the road to compete against Loyola Marymount, looking to continue its undefeated record against Lions, followed by a matchup against 2010 WCC champion No. 20 San Diego. The Cougars will then host Santa Clara for their Dig Pink Match Oct. 6.

With a 12-6 series history against Pepperdine, the Cougars head to Malibu, Calif., to take on the Waves and continue the winning record.

Following the Pepperdine matchup, BYU meets Portland on the road for its first battle against the Pilots. The Cougars finish up the first half of conference play facing Gonzaga.

The Cougars welcome Pepperdine to Provo to begin the second half of conference play and end the season with back-to-back home matches against Gonzaga and Portland.

Matches Televised on BYUtv

| | | |
|------------------|----------|---------------|
| Illinois | Aug. 26 | 5:30 p.m. MDT |
| UC Santa Barbara | Aug. 27 | 10 a.m. MDT |
| Saint Mary's | Aug. 27 | 8 p.m. MDT |
| Weber State | Aug. 30 | 7 p.m. MDT |
| BYU-Hawaii | Sept. 7 | 7 p.m. MDT |
| Saint Mary's | Sept. 22 | 7 p.m. MDT |
| Santa Clara | Oct. 6 | 7 p.m. MDT |
| Pepperdine | Oct. 20 | 7 p.m. MDT |
| Loyola Marymount | Nov. 3 | 7 p.m. MDT |
| San Francisco | Nov. 5 | 7 p.m. MDT |
| Gonzaga | Nov. 17 | 7 p.m. MDT |
| Portland | Nov. 19 | 7 p.m. MDT |

ROSTER NOTES

DOUBLE-DIGIT OUTINGS

KILLS

| PLAYER | TOTAL | HIGH |
|--------------------|-------|------|
| Christie Carpenter | 3 | 17 |
| Jennifer Hamson | 14 | 21 |
| Jessica Jardine | 1 | 10 |
| Casey Thurston | 1 | 13 |
| Katie Vaughn | 3 | 14 |
| Nicole Warner | 3 | 15 |

DIGS

| PLAYER | TOTAL | HIGH |
|--------------------|-------|------|
| Christie Carpenter | 5 | 12 |
| Jennifer Hamson | 7 | 18 |
| Heather Hannemann | 5 | 17 |
| Kendalyn Hartsock | 15 | 25 |
| Jessica Jardine | 1 | 10 |
| Tia Withers | 4 | 15 |

BLOCKS

| PLAYER | TOTAL | HIGH |
|---------------------|-------|------|
| Nicole Warner | 1 | 10 |
| Kathryn LeCheminant | 1 | 10 |

DOUBLE-DOUBLES

Christie Carpenter (1)
vs. EMU (9/10) - 17 K and 12 D

Jennifer Hamson (6)
vs. UCSB (8/27) - 17 K and 18 D
vs. BYU-H (9/7) - 15 K and 10 D
vs. Utah (9/10) - 15 K and 11 D
vs. CSF (9/16) - 18 K and 13 D
vs. CSUN (9/17) - 16 K and 13 D
vs. LMU (9/29) - 21 K and 10 D

Heather Hannemann (4)
vs. Illinois (8/26) - 27 A and 15 D
vs. Saint Mary's (8/27) - 35 A and 10 D
vs. EMU (9/10) - 44 A and 17 D
vs. Utah (9/10) - 34 A and 10 D
vs. LMU (9/29) - 52 A and 12 D

WCC CURRENT STANDINGS

(AS OF SEPT. 29, 2011)

| PL. | TEAM | WCC RECORD | OVERALL | PRESEASON RANK |
|-----|-------------------|------------|---------|----------------|
| T1. | San Francisco | 2-0 | 10-5 | T7 |
| T1. | Pepperdine | 2-0 | 8-5 | 1 |
| T1. | Loyola Marymount | 2-0 | 8-6 | 5 |
| 4. | BYU | 1-0 | 12-3 | 6 |
| 5. | San Diego | 1-1 | 14-1 | 3 |
| T6. | Gonzaga | 0-2 | 6-7 | 9 |
| T6. | Saint Mary's (CA) | 0-2 | 6-8 | 2 |
| T6. | Santa Clara | 0-1 | 5-7 | 4 |
| T6. | Portland | 0-2 | 6-9 | T7 |

AVCA DIVISION I COACHES POLL

(AS OF SEPT. 26, 2011)

| RANK | TEAM (FIRST-PLACE VOTES) | TOTAL POINTS | RECORD | LAST WEEK |
|------|--------------------------|--------------|--------|-----------|
| 1 | ILLINOIS (55) | 1488 | 13-0 | 3 |
| 2 | UCLA (1) | 1345 | 11-2 | 7 |
| 3 | WASHINGTON (1) | 1329 | 10-1 | 4 |
| 4 | CALIFORNIA (2) | 1245 | 13-2 | 1 |
| 5 | SOUTHERN CALIFORNIA (1) | 1192 | 9-3 | 12 |
| 6 | STANFORD | 1166 | 8-3 | 2 |
| 7 | NEBRASKA | 1155 | 9-1 | 10 |
| 8 | TEXAS | 1037 | 8-3 | 8 |
| 9 | PENN STATE | 986 | 8-4 | 5 |
| 10 | MINNESOTA | 970 | 7-3 | 9 |
| 11 | HAWAII | 949 | 12-1 | 11 |
| 12 | PURDUE | 925 | 13-0 | 13 |
| 13 | FLORIDA | 841 | 9-3 | 6 |
| 14 | NORTHERN IOWA | 729 | 14-1 | 14 |
| 15 | OREGON | 685 | 11-1 | 15 |
| 16 | IOWA STATE | 586 | 11-2 | T-16 |
| 17 | MICHIGAN | 503 | 13-1 | 18 |
| 18 | SAN DIEGO | 420 | 14-1 | T-16 |
| 19 | PEPPERDINE | 365 | 8-5 | 19 |
| 20 | MIAMI (FL) | 268 | 11-1 | 21 |
| 21 | COLORADO STATE | 259 | 8-3 | 20 |
| 22 | FLORIDA STATE | 228 | 9-4 | 23 |
| 23 | TENNESSEE | 214 | 11-2 | NR |
| 24 | OHIO STATE | 116 | 11-4 | 24 |
| 25 | OKLAHOMA | 102 | 14-3 | 25 |

Class Breakdown

SENIOR (3)
Christie Carpenter
Casey Thurston
Camilla Phillips

Coriann Clark
Jennifer Hamson
Jessica Jardine
Kathryn LeCheminant
Kemi Bonner

JUNIOR (4)
Heather Hannemann
Kendalyn Hartsock
Nicole Warner

FRESHMAN (5)
Kimberly Dahl
Mariah Katoa
Hannah Robison
Katie Vaughn
Tia Withers

SOPHOMORE (7)
Taeja Afalava
Kimberli Boswell



Shawn Olmstead Head Women's Volleyball Coach

Shawn Olmstead was named head coach of the women's volleyball team in 2011. He entered his first season as an assistant coach at BYU in 2008, serving as the recruiting, video and defensive coordinator. With Olmstead as assistant coach, the Cougars recorded 43 victories.

Coaching Career

Olmstead came to BYU with four years of coaching experience, most recently as an assistant coach for two years at Utah State under former BYU men's volleyball assistant coach Grayson DuBose. While at Utah State, Olmstead served as the program's recruiting coordinator, putting together the second-best recruiting class in the Western Athletic Conference in 2007. He also was responsible for defensive game preparation, including breaking down opponent film and preparing scouting reports. His efforts helped the Aggies rank 25th nationally in blocks per game in 2007.

Prior to his stint at Utah State, Olmstead spent one year as an assistant coach at Cal Poly San Luis Obispo in San Luis Obispo, Calif., in 2005 where he also served as the recruiting coordinator as well as organizing team travel. He helped the Mustangs achieve a 19-6 overall record, improving from 5-24 the year prior to Olmstead's arrival.

Before coaching at Cal Poly, Olmstead spent one year as a volunteer assistant coach for the women's program at Utah Valley State College. He has also coached with IVA High Performance and at various volleyball camps.

Playing Career

Olmstead attended BYU and played libero for the men's volleyball program, helping the Cougars win National Championships in 2001 and 2004 along with a national runner-up finish in 2003. During his senior season in 2004, Olmstead recorded the third-most digs in a single season in school history and earned Mountain Pacific Sports Federation All-Tournament honors.

A native of Carpinteria, Calif., Olmstead prepped at Carpinteria High School where he earned All-CIF volleyball honors as both a junior and senior along with being named his league's Most Valuable Player during his senior season. He set a school record by recording 47 kills in a match.

Personal

Olmstead graduated from BYU with a degree in Spanish Education in 2005 along with a Sociology minor. He is married to the former Farrah Hofheins, and they have two daughters and a son.



BYU'S RECORD WHEN...

| | |
|--|------|
| Facing ranked opponents | 0-1 |
| Facing unranked opponents | 13-2 |
| In three games | 8-2 |
| In four games | 4-1 |
| In five games | 1-0 |
| In first game of the match | 12-4 |
| In second game of the match | 12-4 |
| In third game of the match | 11-3 |
| In fourth game of the match | 4-2 |
| In fifth game of the match | 1-0 |
| Winning first game | 12-0 |
| Opponent wins first game | 1-3 |
| Recording more kills | 9-0 |
| Opponent records more kills | 4-3 |
| Opponent and BYU record equal number of kills | 0-0 |
| Recording higher hitting percentage | 13-0 |
| Opponent records higher hitting percentage | 0-3 |
| Opponent and BYU record equal hitting percentage | 0-0 |
| Hitting .300+ | 4-0 |
| Opponent hits .300+ | 0-0 |
| Three or more Cougars records 10+ kills | 2-0 |
| Three or more opponents record 10+ kills | 0-0 |
| Out-blocking opponent | 10-2 |
| Opponent out-blocks BYU | 3-1 |
| Opponent and BYU record equal number of blocks | 0-0 |
| Recording 12.0+ blocks | 4-1 |
| Opponent records 12.0+ blocks | 1-0 |
| Recording more digs | 10-1 |
| Opponent records more digs | 2-2 |
| Opponent and BYU record equal number of digs | 1-0 |
| In August | 2-2 |
| In September | 11-1 |
| In October | 0-0 |
| In November | 0-0 |
| In December | 0-0 |
| Last 10 matches/Current Streak | 9-1 |
| Longest win streak in 2011 | 9 |
| Playing on Tuesday | 2-0 |
| Playing on Wednesday | 1-0 |
| Playing on Thursday | 2-0 |
| Playing on Friday | 3-2 |
| Playing on Saturday | 5-1 |

2011 BYU TEAM HIGHS

KILLS

| | |
|-----------------|--------------------|
| (3 games) | 49 vs. BYU-H (9/7) |
| (4 games) | 56 vs. GSU (9/2) |
| (5 games) | 63 vs. LMU (9/29) |

ATTEMPTS

| | |
|-----------------|---------------------------|
| (3 games) | 127 vs. Utah State (9/13) |
| (4 games) | 158 vs. CSF (9/16) |
| (5 games) | 177 vs. LMU (9/29) |

ASSISTS

| | |
|-----------------|------------------------------------|
| (3 games) | 46 vs. BYU-H (9/7) |
| (4 games) | 51 vs. GSU (9/2) vs. CSF (9/16) |
| (5 games) | 58 vs. LMU (9/29) |

DIGS

| | |
|-----------------|--------------------------|
| (3 games) | 71 vs. Utah State (9/13) |
| (4 games) | 75 vs. EMU (9/10) |
| (5 games) | 75 vs. LMU (9/29) |

BLOCKS

| | |
|-----------------|---------------------|
| (3 games) | 16.5 vs. SMC (9/22) |
| (4 games) | 16.0 vs. CSF (9/16) |
| (5 games) | 21.0 vs. LMU (9/29) |

2011 BYU INDIVIDUAL HIGHS

KILLS

| | |
|-----------------|---------------------------------------|
| (3 games) | 20, J. Hamson vs. Saint Mary's (8/27) |
| (4 games) | 18, J. Hamson vs. CSF (9/16) |
| (5 games) | 21, J. Hamson vs. LMU (9/29) |

ATTEMPTS

| | |
|-----------------|---------------------------------------|
| (3 games) | 46, J. Hamson vs. Saint Mary's (8/27) |
| (4 games) | 48, J. Hamson vs. CSF (9/16) |
| (5 games) | 54, J. Hamson vs. LMU (9/29) |

ASSISTS

| | |
|-----------------|---|
| (3 games) | 42, H. Hannemann vs. BYU-H (9/7) |
| (4 games) | 48, H. Hannemann vs. GSU (9/2) H. Hannemann vs. CSF (9/16) |
| (5 games) | 52, H. Hannemann vs. LMU (9/29) |

DIGS

| | |
|-----------------|---------------------------------------|
| (3 games) | 23, K. Hartsock vs. Utah State (9/13) |
| (4 games) | 25, K. Hartsock vs. CSF (9/16) |
| (5 games) | 23, K. Hartsock vs. LMU (9/29) |

BLOCKS

| | |
|-----------------|-----------------------------------|
| (3 games) | 10, N. Warner vs. SMC (9/22) |
| (4 games) | 9, N. Warner vs. EMU (9/10) |
| (5 games) | 10, K. LeCheminant vs. LMU (9/29) |

2011 SEASON/CAREER HIGHS

| NO. | NAME | KILLS | ATTEMPTS | HIT % (MIN. 8 ATT.) | DIGS | BLOCK ASSISTS | BLOCK SOLOS | TOTAL BLOCKS | SERVICE ACES | ASSISTS |
|-----|------------------------|--------------------|---------------------|----------------------|--------------------|--------------------|-------------------|-------------------|-------------------|--------------------|
| 1 | Katie Vaughn | 14 (UI, 9/2/11) | 31 (UI, 9/2/11) | .421 (BYUH, 9/7/11) | 3 (GSU, 9/2/11) | 4 (GSU, 9/2/11) | 1 (WSU, 8/30/11) | 4 (GSU, 9/2/11) | 1 (LMU, 9/29/11) | -- |
| | | 14 (UI, 9/2/11) | 31 (UI, 9/2/11) | .421 (BYUH, 9/7/11) | 3 (GSU, 9/2/11) | 4 (GSU, 9/2/11) | 1 (WSU, 8/30/11) | 4 (GSU, 9/2/11) | 1 (LMU, 9/29/11) | -- |
| 2 | Heather Hannemann | 3 (UCSB, 8/27/11) | 7 (GSU, 9/2/11) | .333 (UCSB, 8/27/11) | 17 (EMU, 9/10/11) | 5 (EMU, 9/10/11) | 1 (Utah, 9/10/11) | 5 (EMU, 9/10/11) | 2 (four times) | 52 (LMU, 9/29/11) |
| | | 3 (UCSB, 8/27/11) | 7 (GSU, 9/2/11) | .333 (UCSB, 8/27/11) | 17 (EMU, 9/10/11) | 5 (EMU, 9/10/11) | 1 (two times) | 5 (EMU, 9/10/11) | 2 (five times) | 52 (LMU, 9/29/11) |
| 4 | Kathryn LeCheminant | 7 (BYUH, 9/7/11) | 17 (EMU, 9/10/11) | .636 (BYUH, 9/7/11) | 3 (UCSB, 8/27/11) | 6 (LMU, 9/29/11) | 4 (LMU, 9/29/11) | 10 (LMU, 9/29/11) | -- | 1 (GSU, 9/2/11) |
| | | 10 (CP, 9/4/10) | 21 (CP, 9/4/10) | .636 (BYUH, 9/7/11) | 3 (UCSB, 8/27/11) | 6 (three times) | 4 (LMU, 9/29/11) | 10 (LMU, 9/29/11) | -- | 1 (GSU, 9/2/11) |
| 5 | Mariah Katoa | -- | -- | -- | -- | -- | -- | -- | -- | -- |
| | | -- | -- | -- | -- | -- | -- | -- | -- | -- |
| 6 | Kendalyn Hartssock | 1 (LMU, 9/29/11) | 2 (Utah, 9/10/11) | -- | 25 (CSUN, 9/17/11) | -- | -- | -- | 2 (GSU, 9/2/11) | 4 (UCSB, 8/27/11) |
| | | 1 (two times) | 2 (two times) | -- | 25 (UNM, 11/20/10) | -- | -- | -- | 2 (three times) | 5 (UNM, 11/20/10) |
| 10 | Camilla Phillips | -- | 2 (EMU, 9/10/11) | -- | -- | -- | -- | -- | -- | -- |
| | | 14 (CSU, 11/14/09) | 34 (Utah, 10/23/09) | .500 (CSU, 11/14/09) | 5 (NDSU, 9/29/09) | 7 (UVU, 10/27/09) | -- | 7 (UVU, 10/27/09) | -- | 1 (four times) |
| 11 | Coriann Clark | -- | -- | -- | -- | -- | -- | -- | -- | -- |
| | | 3 (MT, 8/28/10) | 13 (MT, 8/28/10) | .154 (MT, 8/28/10) | 13 (UNM, 11/20/10) | -- | -- | -- | 1 (Ill, 8/27/10) | 5 (UNLV, 11/11/10) |
| 12 | Jessica Jardine | 10 (UCSB, 8/27/11) | 28 (ILL, 8/26/11) | .286 (UCSB, 8/27/11) | 10 (SMC, 8/27/11) | 2 (SMC, 8/27/11) | -- | 2 (SMC, 8/27/11) | 1 (three times) | 2 (ILL, 8/26/11) |
| | | 10 (UCSB, 8/27/11) | 29 (Wyo, 9/25/10) | .286 (UCSB, 8/27/11) | 10 (SMC, 8/27/11) | 2 (two times) | -- | 2 (two times) | 2 (Wyo, 9/25/10) | 2 (ILL, 8/26/11) |
| 13 | Kimberly Dahl | -- | -- | -- | -- | -- | -- | -- | -- | -- |
| | | -- | -- | -- | -- | -- | -- | -- | -- | -- |
| 14 | Christie Carpenter | 17 (EMU, 9/10/11) | 44 (EMU, 9/10/11) | .417 (WSU, 8/30/11) | 12 (four times) | 5 (two times) | 1 (EMU, 9/10/11) | 5 (two times) | 3 (Utah, 9/10/11) | 3 (GSU, 9/2/11) |
| | | 21 (Wyo, 10/17/09) | 57 (two times) | .417 (WSU, 8/30/11) | 15 (two times) | 7 (three times) | 1 (nine times) | 8 (CSU, 9/24/10) | 3 (three times) | 3 (GSU, 9/2/11) |
| 15 | Nicole Warner | 15 (GSU, 9/2/11) | 21 (LMU, 9/29/11) | .737 (GSU, 9/2/11) | 5 (GSU, 9/2/11) | 9 (Utah, 9/10/11) | 1 (three times) | 9 (two times) | 1 (two times) | 2 (UI, 9/2/11) |
| | | 15 (GSU, 9/2/11) | 31 (CP, 9/4/10) | .750 (WSU, 10/12/10) | 6 (Wyo, 10/17/09) | 12 (Wyo, 11/24/10) | 2 (two times) | 11 (LMU, 9/10/10) | 3 (two times) | 2 (UI, 9/2/11) |
| 16 | Hannah Robison | -- | -- | -- | -- | -- | -- | -- | -- | -- |
| | | -- | -- | -- | -- | -- | -- | -- | -- | -- |
| 17 | Tia Withers | 1 (LMU, 9/29/11) | 4 (UCSB, 8/27/11) | -- | 15 (CSF, 9/16/11) | -- | -- | -- | 2 (two times) | 3 (UCSB, 8/27/11) |
| | | 1 (LMU, 9/29/11) | 4 (UCSB, 8/27/11) | -- | 15 (CSF, 9/16/11) | -- | -- | -- | 2 (two times) | 3 (UCSB, 8/27/11) |
| 18 | Kemi Bonner | -- | -- | -- | -- | -- | -- | -- | -- | -- |
| | | -- | -- | -- | -- | -- | -- | -- | -- | -- |
| 19 | Jennifer Hamson | 21 (LMU, 9/29/11) | 54 (LMU, 9/29/11) | .591 (Utah, 9/10/11) | 18 (UCSB, 8/27/11) | 7 (USU, 9/13/11) | 3 (LMU, 9/29/11) | 8 (LMU, 9/29/11) | 5 (BYUH, 9/7/11) | 1 (three times) |
| | | 21 (LMU, 9/29/11) | 54 (LMU, 9/29/11) | .647 (UVU, 10/9/10) | 18 (UCSB, 8/27/11) | 7 (three times) | 3 (LMU, 9/29/11) | 8 (two times) | 5 (BYUH, 9/7/11) | 2 (LMU, 9/10/10) |
| 20 | Casey Thurston | 13 (LMU, 9/29/11) | 42 (LMU, 9/29/11) | .500 (Utah, 9/10/11) | 4 (LMU, 9/29/11) | 4 (CSF, 9/16/11) | 2 (LMU, 9/29/11) | 5 (LMU, 9/29/11) | -- | 1 (LMU, 9/29/11) |
| | | 13 (two times) | 42 (LMU, 9/29/11) | .500 (three times) | 4 (LMU, 9/29/11) | 4 (two times) | 2 (LMU, 9/29/11) | 5 (two times) | -- | 1 (three times) |
| 21 | Taeja Afalava Toleafoa | -- | -- | -- | -- | -- | -- | -- | -- | -- |
| | | 10 (SC, 8/28/10) | 39 (SC, 8/28/10) | .364 (SDSU, 11/6/10) | 19 (SC, 8/28/10) | 2 (Neb, 9/3/10) | -- | 2 (Neb, 9/3/10) | 2 (Ill, 8/27/10) | 1 (two times) |
| 22 | Kimberli Boswell | 1 (LMU, 9/29/11) | 1 (two times) | -- | -- | 2 (three times) | -- | 2 (three times) | -- | -- |
| | | 6 (AFA, 11/13/10) | 17 (AFA, 11/13/10) | .118 (AFA, 11/13/10) | 1 (two times) | 5 (AFA, 11/13/10) | 1 (AFA, 11/13/10) | 6 (AFA, 11/13/10) | 2 (AFA, 10/14/10) | -- |

MATCH-BY-MATCH STARTERS

| MATCH | SETTER | LIBERO | OPPOSITE | OUT. HITTER | OUT. HITTER | MID. BLOCKER | MID. BLOCKER |
|-------------------------|--------------|-------------|-----------|-----------------|--------------|--------------|----------------|
| Illinois (8/26) | H. Hannemann | K. Hartsock | J. Hamson | C. Thurston | J. Jardine | N. Warner | K. LeCheminant |
| UCSB (8/27) | H. Hannemann | K. Hartsock | J. Hamson | C. Thurston | J. Jardine | N. Warner | K. LeCheminant |
| Saint Mary's (8/27) | H. Hannemann | K. Hartsock | J. Hamson | K. Vaughn | J. Jardine | N. Warner | K. LeCheminant |
| WSU (8/30) | H. Hannemann | K. Hartsock | J. Hamson | K. Vaughn | J. Jardine | N. Warner | K. LeCheminant |
| Idaho (9/2) | H. Hannemann | K. Hartsock | J. Hamson | K. Vaughn | C. Carpenter | N. Warner | K. LeCheminant |
| Georgia Southern (9/2) | H. Hannemann | K. Hartsock | J. Hamson | K. Vaughn | C. Carpenter | N. Warner | K. LeCheminant |
| Kansas State (9/3) | H. Hannemann | K. Hartsock | J. Hamson | K. Vaughn | C. Carpenter | N. Warner | K. LeCheminant |
| BYU-Hawaii (9/7) | H. Hannemann | K. Hartsock | J. Hamson | K. Vaughn | C. Carpenter | N. Warner | K. LeCheminant |
| UC Riverside (9/9) | H. Hannemann | K. Hartsock | J. Hamson | T. Withers (DS) | C. Carpenter | N. Warner | K. LeCheminant |
| Eastern Michigan (9/10) | H. Hannemann | K. Hartsock | J. Hamson | T. Withers (DS) | C. Carpenter | N. Warner | K. LeCheminant |
| Utah (9/10) | H. Hannemann | K. Hartsock | J. Hamson | K. Vaughn | C. Carpenter | N. Warner | K. LeCheminant |
| Utah State (9/13) | H. Hannemann | K. Hartsock | J. Hamson | T. Withers (DS) | C. Carpenter | N. Warner | K. LeCheminant |
| CSF (9/16) | H. Hannemann | K. Hartsock | J. Hamson | T. Withers (DS) | C. Carpenter | N. Warner | K. LeCheminant |
| CSUN (9/17) | H. Hannemann | K. Hartsock | J. Hamson | T. Withers (DS) | C. Carpenter | N. Warner | K. LeCheminant |
| Saint Mary's (9/22) | H. Hannemann | K. Hartsock | J. Hamson | T. Withers (DS) | C. Carpenter | N. Warner | K. LeCheminant |
| LMU (9/29) | H. Hannemann | K. Hartsock | J. Hamson | T. Withers (DS) | C. Carpenter | N. Warner | K. LeCheminant |

MATCH-BY-MATCH STAT LEADERS

| OPPONENT | KILLS | ATTEMPTS | ASSISTS | ACES | DIGS | BLOCKS |
|-------------------------|--------------------------|-----------------|-----------------|----------------------|-------------------------------|----------------------|
| Illinois (8/26) | 17 J. Hamson | 42 J. Hamson | 27 H. Hannemann | 1 J. Jardine | 15 H. Hannemann | 5 K. LeCheminant |
| UCSB (8/27) | 17 J. Hamson | 34 J. Hamson | 36 H. Hannemann | 2 J. Hamson | 20 K. Hartsock | 6 LeCheminant/Warner |
| Saint Mary's (8/27) | 20 J. Hamson | 46 J. Hamson | 35 H. Hannemann | -- | 10 Hannemann/Jardine/Hartsock | 5 J. Hamson |
| WSU (8/30) | 11 J. Hamson | 26 J. Hamson | 33 H. Hannemann | 2 T. Withers | 10 K. Hartsock | 6 N. Warner |
| Idaho (9/2) | 14 K. Vaughn | 31 K. Vaughn | 26 H. Hannemann | 2 H. Hannemann | 12 Hartsock/Carpenter | 6 N. Warner |
| Georgia Southern (9/2) | 15 N. Warner | 31 J. Hamson | 48 H. Hannemann | 2 Hamson/Withers | 17 K. Hartsock | 6 N. Warner |
| Kansas State (9/3) | 17 J. Hamson | 32 J. Hamson | 33 H. Hannemann | 2 Hannemann/Hartsock | 15 K. Hartsock | 6 N. Warner |
| BYU-Hawaii (9/7) | 15 J. Hamson | 33 J. Hamson | 42 H. Hannemann | 5 J. Hamson | 19 K. Hartsock | 2 K. LeCheminant |
| UC Riverside (9/9) | 8 J. Hamson/C. Carpenter | 23 C. Carpenter | 23 H. Hannemann | 2 C. Carpenter | 12 J. Hamson | 6 N. Warner |
| Eastern Michigan (9/10) | 17 C. Carpenter | 44 C. Carpenter | 44 H. Hannemann | -- | 21 K. Hartsock | 9 N. Warner |
| Utah (9/10) | 15 H. Hamson | 25 C. Carpenter | 34 H. Hannemann | 3 C. Carpenter | 14 K. Hartsock | 9 N. Warner |
| Utah State (9/13) | 13 J. Hamson/N. Warner | 34 C. Carpenter | 36 H. Hannemann | 2 H. Hannemann | 23 K. Hartsock | 7 J. Hamson |
| CSF (9/16) | 18 J. Hamson | 48 J. Hamson | 48 H. Hannemann | 3 J. Hamson | 17 K. Hartsock | 8 N. Warner |
| CSUN (9/17/11) | 16 J. Hamson | 39 J. Hamson | 34 H. Hannemann | 2 J. Hamson | 25 K. Hartsock | 3 Warner/LeCheminant |
| Saint Mary's (9/22) | 12 J. Hamson | 25 C. Carpenter | 27 H. Hannemann | 4 J. Hamson | 7 Hannemann/Hartsock | 10 N. Warner |
| LMU (9/29) | 21 J. Hamson | 54 J. Hamson | 52 H. Hannemann | -- | 23 K. Hartsock | 10 K. LeCheminant |

BYU Women's Volleyball

2011 Season Stats: All Matches

BYU Cougar Volleyball 2011 BYU Combined Team Statistics (as of Sep 30, 2011) All matches

| RECORD: | OVERALL | HOME | AWAY | NEUTRAL |
|----------------|---------|------|------|---------|
| ALL GAMES | 13-3 | 4-2 | 5-1 | 4-0 |
| CONFERENCE | 2-0 | 1-0 | 1-0 | 0-0 |
| NON-CONFERENCE | 11-3 | 3-2 | 4-1 | 4-0 |

| # | Player | sp | Attack | | | | | Set | | Serve | | | Dig | | | Blocking | | | | | points | |
|----|---------------------|----|--------|-------|-----|--------|------|------|-------|-------|------|------|-----|------|-------|----------|-----|-------|-------|----|--------|-----|
| | | | k | k/s | e | ta | pct | a | a/s | sa | se | sa/s | re | dig | dig/s | bs | ba | total | blk/s | be | | bhe |
| 15 | WARNER, Nicole | 55 | 111 | 2.02 | 35 | 232 | .328 | 7 | 0.13 | 3 | 14 | 0.05 | 0 | 25 | 0.45 | 4 | 89 | 93 | 1.69 | 12 | 0 | - |
| 19 | HAMSON, Jennifer | 55 | 235 | 4.27 | 65 | 536 | .317 | 3 | 0.05 | 21 | 32 | 0.38 | 0 | 144 | 2.62 | 5 | 61 | 66 | 1.20 | 2 | 0 | - |
| 4 | LECHEMINANT, Kathy | 55 | 70 | 1.27 | 24 | 155 | .297 | 1 | 0.02 | 0 | 0 | 0.00 | 3 | 17 | 0.31 | 10 | 54 | 64 | 1.16 | 3 | 1 | - |
| 14 | CARPENTER, Christie | 44 | 113 | 2.57 | 43 | 364 | .192 | 10 | 0.23 | 11 | 6 | 0.25 | 17 | 107 | 2.43 | 1 | 27 | 28 | 0.64 | 4 | 0 | - |
| 1 | VAUGHN, Katie | 36 | 77 | 2.14 | 36 | 218 | .188 | 0 | 0.00 | 1 | 0 | 0.03 | 12 | 13 | 0.36 | 1 | 18 | 19 | 0.53 | 4 | 0 | - |
| 20 | THURSTON, Casey | 26 | 52 | 2.00 | 20 | 188 | .170 | 1 | 0.04 | 0 | 0 | 0.00 | 3 | 13 | 0.50 | 2 | 17 | 19 | 0.73 | 1 | 0 | - |
| 6 | HARTSOCK, Kendalyn | 55 | 1 | 0.02 | 0 | 6 | .167 | 33 | 0.60 | 5 | 9 | 0.09 | 14 | 253 | 4.60 | 0 | 0 | 0 | 0.00 | 0 | 5 | - |
| 2 | HANNEMANN, Heather | 55 | 17 | 0.31 | 8 | 54 | .167 | 578 | 10.51 | 14 | 8 | 0.25 | 0 | 133 | 2.42 | 2 | 31 | 33 | 0.60 | 2 | 1 | - |
| 12 | JARDINE, Jessica | 18 | 30 | 1.67 | 25 | 94 | .053 | 5 | 0.28 | 3 | 4 | 0.17 | 5 | 26 | 1.44 | 0 | 4 | 4 | 0.22 | 1 | 0 | - |
| 22 | BOSWELL, Kimberli | 7 | 1 | 0.14 | 1 | 4 | .000 | 0 | 0.00 | 0 | 0 | 0.00 | 0 | 0 | 0.00 | 0 | 7 | 7 | 1.00 | 0 | 0 | - |
| 17 | WITHERS, Tia | 55 | 1 | 0.02 | 1 | 15 | .000 | 10 | 0.18 | 9 | 7 | 0.16 | 6 | 112 | 2.04 | 0 | 0 | 0 | 0.00 | 0 | 0 | - |
| 10 | PHILLIPS, Camilla | 1 | 0 | 0.00 | 2 | -1.000 | 0 | 0.00 | 0 | 0 | 0.00 | 0 | 0 | 0.00 | 0 | 0 | 0 | 0.00 | 0 | 0 | 0 | - |
| | TEAM | - | - | - | - | - | - | - | - | - | - | - | 3 | - | - | - | - | - | - | - | - | - |
| | BYU | 55 | 708 | 12.87 | 260 | 1868 | .240 | 648 | 11.78 | 67 | 80 | 1.22 | 63 | 843 | 15.33 | 25 | 308 | 179.0 | 3.25 | 29 | 7 | - |
| | Opponents | 55 | 679 | 12.35 | 408 | 2036 | .133 | 638 | 11.60 | 63 | 119 | 1.15 | 67 | 794 | 14.44 | 9 | 187 | 102.5 | 1.86 | 35 | 4 | - |

| Team Statistics | BYUW11 | OPP |
|-------------------------|--------|-------|
| ATTACK | | |
| Kills | 708 | 679 |
| Errors | 260 | 408 |
| Total Attacks | 1868 | 2036 |
| Attack Pct | .240 | .133 |
| Kills/Set | 12.9 | 12.3 |
| SET | | |
| Assists | 648 | 638 |
| Assists/Set | 11.8 | 11.6 |
| SERVE | | |
| Aces | 67 | 63 |
| Errors | 80 | 119 |
| Aces/Set | 1.2 | 1.1 |
| SERVE RECEPTIONS | | |
| Errors | 63 | 67 |
| Errors/Set | 1.1 | 1.2 |
| DEFENSE | | |
| Digs | 843 | 794 |
| Digs/Set | 15.3 | 14.4 |
| BLOCKING | | |
| Block Solo | 25 | 9 |
| Block Assist | 308 | 187 |
| Total Blocks | 179.0 | 102.5 |
| Blocks/Set | 3.3 | 1.9 |
| Block Errors | 29 | 35 |
| Ball handling errors | 7 | 4 |
| ATTENDANCE | | |
| Total | 7926 | 4787 |
| Dates/Avg Per Date | 6/1321 | 6/798 |
| Neutral site #/Avg | 4/58 | |
| Current win streak | 3 | - |
| Home win streak | 3 | - |

| Date | Opponent | Score | Score by set | Att. |
|---------|-------------------------|-------|------------------------------|------|
| Aug 26 | #8 ILLINOIS | L 0-3 | 26-28,22-25,16-25 | 2741 |
| Aug 27 | UC SANTA BARBARA | w 3-1 | 18-25,25-14,25-17,25-9 | 265 |
| Aug 27 | SAINT MARY'S | L 0-3 | 21-25,22-25,29-31 | 1040 |
| Aug 30 | WSU | w 3-0 | 25-14,25-21,28-26 | 1405 |
| Sep 02 | vs UI | w 3-0 | 25-16,25-17,25-21 | 0 |
| Sep 02 | vs Georgia Southern | w 3-1 | 25-20,25-22,23-25,25-9 | 0 |
| Sep 03 | at Kansas State | w 3-0 | 25-23,25-19,25-23 | 1195 |
| Sep 07 | BYU-HAWAII | w 3-0 | 25-19,25-15,25-20 | 1631 |
| Sep 09 | vs UC Riverside | w 3-0 | 25-20,25-14,25-16 | 135 |
| Sep 10 | vs Eastern Michigan | w 3-1 | 25-19,25-23,16-25,25-8 | 97 |
| Sep 10 | at Utah | w 3-0 | 25-20,25-17,25-14 | 1010 |
| Sep 13 | at Utah State | w 3-0 | 25-22,25-21,25-19 | 1213 |
| Sep 16 | at Cal State Fullerton | L 1-3 | 22-25,22-25,26-24,23-25 | 387 |
| Sep 17 | at Cal State Northridge | w 3-1 | 25-15,25-22,16-25,25-17 | 262 |
| *Sep 22 | SAINT MARY'S | w 3-0 | 25-14,25-17,25-13 | 844 |
| *Sep 29 | at LMU | w 3-2 | 25-23,19-25,25-22,25-27,15-9 | 720 |

Record in 3-set matches: 8-2
Record in 4-set matches: 4-1
Record in 5-set matches: 1-0