



BOISE STATE™

WOMEN'S BASKETBALL



@BroncoSportsWBB



@boisestatewbb



Boise State Womens' Basketball

GAME INFORMATION

Date Dec. 1 (Thu.)
 Time 6:30 p.m. MT
 Location Boise, Idaho
 Facility ExtraMile Arena
 Watch MW Network
 Listen KBOI 670 AM

THE MATCHUP

BYU
Cougars



Boise State
Broncos



THE STATS

2-5	RECORD	3-4
1-3	HOME	3-1
0-1	ROAD	0-1
1-1	NEUTRAL	0-2
63.1	SCORING OFFENSE	71.1
65.7	SCORING DEFENSE	64.6
-2.6	SCORING MARGIN	+6.5
44.2%	FG% OFFENSE	41.8%
39.7%	FG% DEFENSE	36.4%
33.7%	3FG% OFFENSE	31.7%
36.4%	3FG% DEFENSE	35.3%
5.0	3FG/GAME	5.6
76.0%	FT %	73.2%
38.3	REBOUNDS	42.4
+7.7	REBOUND MARGIN	+7.7
14.3	ASSISTS	13.9
16.1	TURNOVERS	17.0
3.9	STEALS	6.0
2.7	BLOCKS	5.1

TEAM LEADERS

Points Per Game		Points Per Game	
Lauren Gustin.....	15.3	Elodie Lalotte.....	14.0
Rebounds Per Game		Rebounds Per Game	
Lauren Gustin.....	13.6	Abby Muse.....	9.9
Assists Per Game		Assists Per Game	
Nani Falatea.....	4.9	Mary Kay Naro.....	3.6
Steals Per Game		Steals Per Game	
Two with.....	1.0	Abby Muse.....	1.1
Blocks Per Game		Blocks Per Game	
Two with.....	0.7	Abby Muse.....	3.0

BRONCO QUICK FACTS & PROGRAM HISTORY



Boise State (3-4)

Head Coach Gordy Presnell
Year at Boise State 18th
Record at Boise State 320-215
Career Record 716-342
Location Boise, Idaho
Enrollment 26,162

Founded 1932
Conference Mountain West
First Year of WBB 1970-71
NCAA Appearances 7
Arena ExtraMile Arena
Capacity 12,380

GAME NOTES

- LAST TIME OUT:** Boise State fell to Milwaukee 55-54 in overtime, Sunday, in the second game of the Nugget Classic in Reno, Nev. It was the first overtime game the Broncos have played since a 76-75 loss to Nevada on Feb. 24, 2022.
- WHAT'S NEXT:** The Broncos will return home for a game against BYU. The two teams will face off on Thursday, Dec. 1, at 6:30 p.m. MT in Extra-Mile Arena.
- THE OPPONENT:** BYU (2-5) is coming off a 61-56 home loss to Ball State.
- SERIES:** Thursday's game will be the 21st matchup between the two programs. BYU leads the series 12-8.
- LAST MATCHUP:** BYU defeated Boise State 84-40 last season in Provo, Utah.
- NATIONALLY RANKED:** Abby Muse enters Thursday's game ranked third nationally in total blocks (121) and tied for sixth in blocks per game (3.0).
- REACHING MILESTONES:** Abby Muse surpassed 500 career points on Sunday against Milwaukee. Entering Thursday's game she has scored 507 career points.
- CHASING MILESTONES:** Abby Muse needs just one block to reach 100 career blocks. She is currently tied for fourth in the Boise State record books with Michelle Hessing and Nancy Phillips (99).
- DOUBLE FIGURES:** The Broncos have three players averaging double figures in scoring - Elodie Lalotte (14.0 ppg), Abby Muse (11.7 ppg) and Natalie

2022-23 SCHEDULE

Date	Opponent	Result
Nov. 7	MULTNOMAH	W 121-64
Nov. 11	EASTERN WASHINGTON	L 74-83
Nov. 13	WEBER STATE	W 63-52
Nov. 17	UC Davis	L 62-69
Nov. 20	PORTLAND STATE	W 71-61
Nov. 25	North Dakota State#	L53-68
Nov. 27	Milwaukee#	L 54-55 (OT)
Dec. 1	BYU	6:30 p.m.
Dec. 4	COLORADO	1 p.m.
Dec. 10	SAINT MARY'S	2 p.m.
Dec. 12	EVERGREEN STATE	Noon
Dec. 19	UTRGV%	5 p.m.
Dec. 20	Texas A&M Commerce%	2 p.m.
Dec. 29	SAN DIEGO STATE*	6:30 p.m.
Dec. 31	SAN JOSE STATE*	1 p.m.
Jan. 7	Utah State*	2 p.m.
Jan. 11	COLORADO STATE*	6:30 p.m.
Jan. 14	San Diego State*	1 p.m.
Jan. 16	UNLV*	9 p.m.
Jan. 19	FRESNO STATE*	6:30 p.m.
Jan. 21	New Mexico*	1 p.m.
Jan. 26	AIR FORCE*	6:30 p.m.
Jan. 28	WYOMING*	2 p.m.
Feb. 2	Nevada*	7:30 p.m.
Feb. 4	Fresno State*	3 p.m.
Jan. 9	NEW MEXICO*	6:30 p.m.
Jan. 11	UNLV*	2 p.m.
Feb. 16	Air Force*	6:30 p.m.
Jan. 18	UTAH STATE*	2 p.m.
Feb. 23	San Jose State*	7 p.m.
Feb. 28	Colorado State*	6:30 p.m.
Mar. 5	MW Championship (1st Rd.)	TBD
Mar. 6	MW Championship (QF)	TBD
Mar. 7	MW Championship (SF)	TBD
Mar. 8	MW Championship	TBD

Home Matches in **BOLD/CAPS**
 # Nugget Classic
 % South Padre Island
 * Mountain West Game
 All Times Mountain

PROGRAM HISTORY

Years of Women's Basketball.....	52
First Year of Women's Basketball.....	1970-71
All-Time Program Record.....	791-613 (.563)
All-Time Head Coaches.....	6
Winning Seasons.....	29
.500 Seasons.....	3
Losing Seasons.....	20
20+ Win Seasons.....	10

Conference Games Only

All-Time Conf. Record.....	364-330 (.525)
All-Time Tour. Record.....	30-24 (.556)
Winning Seasons.....	22
.500 Seasons.....	6
Losing Seasons.....	17
Regular Season Titles.....	6
1992.....	Big Sky
1994.....	Big Sky
2007.....	WAC
2008.....	WAC
2018.....	Mtn. West
2019.....	Mtn. West
Regular Season Division Titles.....	2
1978.....	NWBL, Mountain Division
1998.....	Big West, Eastern Division
Tournament Titles.....	6
2007.....	WAC
2015.....	MW
2017.....	MW
2018.....	MW
2019.....	MW
2020.....	MW

Conference Membership

NW Women's Basketball League.....	1977-82
Mountain West Athletic Conference.....	1982-88
Big Sky Conference.....	1988-95
Big West Conference.....	1996-01
Western Athletic Conference.....	2001-10
Mountain West Conference.....	2011-present

National Postseason Appearances

NCAA Tournament App. (Record).....	6 (0-6)
1994.....	at Washington, L, 89-61
2007.....	vs. G.W., L, 76-67
2015.....	at Tennessee, L, 72-61
2017.....	at UCLA, L, 83-56
2018.....	at Louisville, L, 74-42
2019.....	at Oregon State, L, 75-80 (OT)
2020.....	Canceled (Covid-19)
WNIT Tournament App. (Record).....	2 (1-2)
1998.....	at LSU, L 58-38
2008.....	Idaho State, W 77-54 (1st Rd.) at TCU, L 85-56 (2nd Rd.)
WBI Tournament App. (Record).....	1 (1-1)
2014.....	at GCU, W 52-51 (1st Rd.) at SFA, L 80-59 (2nd Rd.)
AIAW Tournament App. (Record).....	1 (0-2)
1975.....	vs. Wayland Baptist, L 93-37 vs. Kansas State, L 65-37

GAME NOTES (CONTINUED)

Pasco (10.7).

- **PLAYER OF THE WEEK:** Elodie Lalotte was named the MW Player of the Week on Nov. 21. She is the first Bronco to be named the MW Player of the Week since Jade Loville on Jan. 5, 2021.
- **FRESHMAN OF THE WEEK:** Natalie Pasco was named the Mountain West Freshman of the Week on Nov. 21. She is only the second Bronco to be named the MW Freshman of the Week since the conference began giving the award last season. Pasco's current teammate Trista Hull won the award last season.
- **CAREER NIGHT:** Elodie Lalotte recorded a career-high in two straight games. The junior forward topped her previous career-high of 18 points on Nov. 17, scoring 22 points against UC Davis. She followed that up with a 25-point outing against Portland State on Nov. 20.
- **CAREER NIGHT - PART TWO :** Mary Kay Naro recorded a career-high nine rebounds against UC Davis on Nov. 17.
- **SEASON HIGH:** Trista Hull scored a season-high 12 points against North Dakota State. The sophomore forward went 6-of-8 from the free throw line.
- **SEASON HIGH - PART TWO:** Abby Muse recorded a season-high 12 rebounds and four blocks against North Dakota State.
- **RETURN OF THE REBOUND:** The Broncos are outrebounding its opponents by 7.7 boards a game. Boise State has outrebounded its opponent in all but two games on the season (Weber State and Milwaukee).
- **THE STAFF:** Head coach Gordy Presnell begins his 18th season at the helm for the Broncos. With a 320-215 record at Boise State, Presnell has the most victories by a head coach in program history (.598).
- **STARTING OFF STRONG:** Boise State broke several records in its season opener, including scoring the most points ever in a single game. The team also broke a program record for most field goals in a game (46) and made the second-most three-pointers in a game (16).
- **FRESHMAN SENSATION:** Natalie Pasco averages 10.7 points

per game off the bench. The freshman from Danville, Calif. has led the Broncos in scoring in two games this season (Multnomah and Eastern Washington).

- **CLOSE CALL:** Pasco made seven three-pointers against Eastern Washington on Nov. 11. She was one three-pointer short of tying the single-game three-point record.
- **CLOSE CALL - PART TWO:** Abby Muse blocked six shots against Eastern Washington on Nov. 11, one short of her career-high (seven).
- **HOT SHOOTING:** Pasco shot 7-of-9 (77.8 percent) from beyond the arc against Eastern Washington on Nov. 11, tied for the second-best three-point shooting performance in the entire country so far this season. Myia Clark (Evansville) shot 8-of-9 from three-point land against Eastern Kentucky.
- **NOT IN MY HOUSE:** Abby Muse has more blocks (21) than the rest of the team combined (15).
- **HOT START:** Freshman Dani Bayes has scored in double figures in four of seven games this season.
- **FRESHMAN IMPACT:** 34.7 percent of the Bronco's scoring comes from freshmen.
- **ROSTER CONSTRUCTION:** Boise State's roster consists of student-athletes from seven states (Washington-4, Oregon-3, Arizona-1, California-1, Idaho-1, Montana-1, Texas-1) and three foreign countries (Australia-1, France-1, New Zealand-1).
- **FORCING TURNOVERS:** The Broncos forced 22 Weber State turnovers on Nov. 13, the most in a game this season. Boise State recorded nine steals resulting in 14 points off turnovers.
- **CAREER-HIGH:** Sophomore Linsey Lovrovich scored a career-high 12 points on Monday against Multnomah.
- **HOMECOMING:** Boise-native Mandy Simpson took the court for the first time in the Blue and Orange since transferring from Oklahoma in 2021. Simpson came off the bench against Multnomah and recorded five points, three assists and two rebounds.
- **SHARING THE ROCK:** The Broncos recorded 26 assists in the season opener against Multnomah. Three players dished out five dimes - Mya Hansen, Mary Kay Naro and Jayda Clark.
- **BENCH MOB:** The Broncos scored 67

GAME NOTES (CONTINUED)

points off the bench against Multnomah. The Boise State bench out-scored the Bronco starters 67-54.

- **BREAKING RECORDS:** The Broncos scored 121 points against Multnomah, the most points Boise State has scored in a game in program history. The previous record high was 117 against Northwest Nazarene on Jan. 5, 1988.
- **BREAKING RECORDS - PART TWO:** The Broncos also broke a record for most field goals made (46) against Multnomah. The previous high was 43 against Whitman on Jan. 3, 1989. 46 made field goals is the fourth-most field goals made by a team during the 2022-23 season.
- **CITY OF THREES:** Boise State hit 16 three-pointers against Multnomah, the second-most makes from beyond the arc in program history. The Broncos made 18 three-pointers against Portland State on Nov. 16, 2011.
- **EXPERIENCE:** Boise State's roster consists of four freshman, one red-shirt-freshman, four sophomores, five juniors, one senior and one graduate senior.
- **RECORD BOOKS - BLOCKS:** Abby Muse enters the 2022-23 season currently ranked second all-time in program history in blocks per game (1.7). Stephanie Block sits atop the record book with 1.9 blocks per game.
- **RECORD BOOKS - ASSISTS:** Mary Kay Naro currently sits fourth all-time in program history in assists per game (4.2).
- **RECORD BOOKS - BLOCKS:** Abby Muse is currently tied for fourth all-time in career blocks in program history (99). Michelle Hessing and Nancy Phillips are tied for fourth place with 99 career blocks.
- **RECORD BOOKS - FG%** With a career field goal percentage of 48.1 percent, Abby Muse sits 11th all-time in the Boise State record book. Elodie Lalotte is currently tied for 13th at 47.7 percent.
- **RECORD BOOKS - THREES:** Anna Ostlie is currently in 22nd place in made three-pointers in program history (77). Jamia Malone is directly ahead of her with 83 makes from long range.
- **RECORD BOOKS:** Mary Kay Naro moved up to 15th in program history in total assists (250). She needs nine assists to tie Diana Lee (259).
- **CHASING 800:** With 791 wins all-time,

the Boise State women's basketball programs needs just nine wins to reach 800 wins. The Broncos have an all-time record of 791-611 (.564).

- **RECORD BOOKS:** Nationally, Presnell currently ranks 15th among active head coaches (33rd all-time) on the NCAA all-time victories list with 720 career wins.
- **NCAA TOURNAMENT:** The Broncos have reached the NCAA Tournament seven times in program history, with six appearances coming under Presnell's watch.
- **POSTSEASON:** Presnell has led the team to the postseason eight times during his Bronco tenure. Boise state has qualified for the postseason 11 times in its history.
- **MW CHAMPIONSHIPS:** Presnell has won four regular season conference titles and six conference tournaments as the head coach of the Broncos.
- **ALL-CONFERENCE:** Presnell's players have earned 17 All-Mountain West selections, including 12 first-team honors. A player from Presnell's team has won the MW Tournament MVP five times.
- **COACH OF THE YEAR:** Gordy Presnell has won three MW Coach of the Year awards over the past 10 seasons, the most of any coach in the conference.
- **18 YEARS:** Gordy Presnell is the longest tenured coach in the MW as he enters his 18th season. Ryun Williams (Colorado State) is the second-longest tenured head coach, entering his 11th season.
- **GETTING IT DONE OFF THE COURT:** The 2021-22 Boise State women's basketball team finished seventh in the nation in the Women's Basketball Coaches Association Academic Top 25 Honor Roll. All 16 members from last year's roster combined for a 3.721 average, the highest GPA in team history.
- **GETTING IT DONE OFF THE COURT - PART TWO:** The 2021-22 Boise State women's basketball team registered a 100 percent Graduation Success Rate (GSR). It is the second straight season the Broncos earned a perfect score and the fourth time in program history.
- **KEEPING IT IN THE FAMILY:** Boise State has a pair of sisters on the team in Mary Naro and Mackenzie Naro. They both played for their mother, Kathy, at Beaverton High School.

MW PRESEASON POLL

TEAM (1ST PLACE VOTES)	POINTS
1. UNLV (26)	297
2. New Mexico (2)	264
3. Colorado State	232
4. Wyoming	207
5. San Diego State	200
6. Nevada	142
7. Boise State	140
8. Air Force	125
9. Fresno State	113
10. San Jose State	67
11. Utah State	61

* selected by head coaches and select media

MW STANDINGS

TEAM	MW	OVR.
1. UNLV	0-0	7-0
2. San Diego State	0-0	6-1
3. Colorado State	0-0	4-2
4. Fresno State	0-0	4-3
5. New Mexico	0-0	3-3
6. Wyoming	0-0	3-3
7. Air Force	0-0	3-4
8. Boise State	0-0	3-4
9. Nevada	0-0	2-3
10. San Jose State	0-0	1-5
11. Utah State	0-0	1-5

GENERAL INFO

Name.....Boise State University
 Location.....Boise, Idaho
 Founded.....1932
 Enrollment.....23,886
 Nickname.....Broncos
 Colors.....Blue and Orange
 Affiliation.....NCAA Division I
 Conference.....Mountain West
 President.....Dr. Marlene Tromp
 Director of Athletics.....Jeremiah Dickey
 Arena Name.....ExtraMile Arena
 Elevation (campus level).....2,704 Feet
 Opened.....Fall 1982
 Capacity.....12,400

SPORTS INFORMATION

Alex Semadeni (Primary)
 970-237-1634
 alexsemadeni@boisestate.edu

Ariana Salinas (Secondary)
 818-442-2498
 arianasalinas@boisestate.edu

YEAR BY YEAR

1987-88	Seattle Pacific	16-11	13-10 (5)
1988-89	Seattle Pacific	24-6	17-5 (4)
1989-90	Seattle Pacific	21-9	17-7 (4)
1990-91	Seattle Pacific	18-11	7-9 (6)
1991-92	Seattle Pacific	17-13	5-5 (4)
1992-93	Seattle Pacific	17-10	7-3 (2)
1993-94	Seattle Pacific	17-10	6-4 (3)
1994-95	Seattle Pacific	21-8	7-3 (2)
1995-96	Seattle Pacific	17-10	3-7 (4)
1996-97	Seattle Pacific	26-3	7-1 (1)
1997-98	Seattle Pacific	27-3	7-1 (1)
1998-99	Seattle Pacific	19-10	11-7 (4D)
1999-00	Seattle Pacific	21-7	13-5 (3)
2000-01	Seattle Pacific	24-5	18-4 (1)
2001-02	Seattle Pacific	22-6	14-4 (2)
2002-03	Seattle Pacific	29-1	18-0 (1)
2003-04	Seattle Pacific	30-1	18-0 (1)
2004-05	Seattle Pacific	30-3	17-1 (1)
2005-06	Boise State	15-15	6-10 (6)
2006-07	Boise State	24-9	12-4 (t-1)
2007-08	Boise State	24-8	14-2 (1)
2008-09	Boise State	16-15	9-7 (t-5)
2009-10	Boise State	19-12	8-8 (t-4)
2010-11	Boise State	12-19	3-13 (8)
2011-12	Boise State	15-16	5-9 (6)
2012-13	Boise State	11-19	4-12 (7)
2013-14	Boise State	18-14	12-6 (T-3rd)
2014-15	Boise State	22-11	11-7 (4th)
2015-16	Boise State	19-11	12-6 (3rd)
2016-17	Boise State	25-8	12-6 (3rd)
2017-18	Boise State	23-10	14-4 (T-1st)
2018-19	Boise State	28-5	16-2 (1st)
2019-20	Boise State	24-9	13-5 (2nd)
2020-21	Boise State	13-8	10-8
2021-22	Boise State	8-21	4-13
Totals	Record	Pct.	
at Seattle Pacific	396-127	.757	
at Boise State	320-215	.598	
Overall (29 Winning Seasons)	716-342	.677	
Postseason	28-19	.568	

HIGHLIGHTS

NCAA Div. II Winningest Coaches All-Time

By Percentage	T-10th	75.7%
By Victories	21st	396

(as of his departure in summer of 2005)

COACH OF THE YEAR HONORS

TOTAL	17
WBCA National Division II	2
WBCA West Region Division I	1
WBCA West Region Division II	4
Western Athletic Conference (WAC)	1
Mountain West (MW)	1
Other Conference COY	8

CONFERENCE CHAMPIONSHIPS

TOTAL	16
Mountain West	7
Western Athletic (WAC)	2
Pacific West	2
Great Northwest Athletic (GNAC)	5

NATIONAL POSTSEASON APPEARANCES

TOTAL	21
NCAA Division I Tournament	6
First Round	5
WNIT	1
Second Round	1
WBI	1
Second Round	1
NCAA Division II Tournament	10
Reached 2nd Round	7
Reached Sweet 16	6
Reached Elite Eight	3
Reached Final (runner-up)	1
NAIA Tournament	3
Reached Region 2nd Round	2

Gordy PRESNELL

Boise State Head Coach

18th Season at Boise State; 35th Overall

Alma Mater: Northwest Nazarene, 1983;

Seattle Pacific, 1989

Hometown: Lapwai, Idaho



BOISE STATE TENURE (2005-present)

Eighteen years ago Gordy Presnell returned to his home state to become the sixth head coach in Boise State University's women's basketball program history. He brought with him a mild and laid-back demeanor, 18 years of head-coaching experience and a long record of success. Presnell currently ranks first in Bronco history for victories by a coach with a record of 317-211 (.600) overall. The 2021-22 season will mark his 36th as a collegiate head coach with a career record of 713-338 (.678).

With 713 career victories through the 2021-22 campaign, Presnell currently sits at 33rd on the all-time victories list of NCAA (all levels) wins and 15th among active coaches. He coached the 1,000th game of his illustrious career in the 2020-21 season opener and recorded his 700th career win on Feb. 5, 2021 as Boise State defeated Nevada 73-63 at ExtraMile Arena.

Presnell's Bronco teams have qualified the NCAA Tournament on six occasions (2007, 2015, 2017-20) and nine times have qualified for the postseason. Under his watch, Boise State has also won four regular-season titles (2007-08 WAC; 2017-19 Mountain West) and six conference tournament titles (2007 WAC; 2015, 2017-20 Mountain West).

The Broncos are currently in dynasty mode under Presnell's watch, having qualified for the NCAA Tournament in five of the past eight seasons (2015, 2017-20), and establishing the program as the Mountain West's standard-bearer, capturing five conference tournament crowns and two regular-season titles since 2015. Boise State cemented this status with by winning the Mountain West double (regular-season and tournament titles) in two-straight campaigns (2018-19).

Boise State's 80-76 overtime win over Fresno State in the 2020 Mountain West Basketball Championship Game made the Broncos the first program in conference history to win four-straight tournaments (2017-20), and, with five tournament titles (2015, 2017-20), tied the Broncos with New Mexico for the most all-time.

Presnell, the 2018-19 Mountain West Coach of the Year, has taken the Broncos to 141 victories over the past seven seasons, including 81 (regular season and conference tournament) against Mountain West competition. After setting the program record for wins in a season with 25 in 2016-17, Presnell guided the Broncos to 23 wins in 2017-18 before establishing the new benchmark with 28 victories in 2018-19. The Broncos followed that with the program's fourth-straight 20-win season in 2019-20, going 24-9.

The program's recent run began in 2013-14, as the Broncos won 19 games and went to the Women's Basketball Invitational (WBI), the team's first postseason appearance since 2008. Since 2013-14, the Broncos have won at least 19 games six times, including five 20-win campaigns.

The first of those recent 20-win seasons came in 2014-15, when Presnell led the Broncos to a 22-11 mark, the Mountain West Tournament title, and the program's first NCAA Tournament appearance since 2007. In the first round, the Broncos, a 15-seed, fought valiantly at No. 2 Tennessee, trailing the Lady Volunteers by just five with under three minutes to play before falling 72-61.

Over this span, Presnell's players have earned 17 All-Mountain West selections, including 12 first-team honors. They have stepped up even more when the lights shine brightest, as Brooke Pahukoa (2015, 2017), Riley Lupfer (2018), Braydey Hodgins (2019), and A'Shanti Coleman (2020) have combined to capture five Mountain West Tournament MVPs over the past six tournaments.

Since Boise State joined the Mountain West in 2011-12, the Broncos, under Presnell, lead all conference schools with five NCAA Tournament bids. Presnell's teams have gone 165-122 (.575) in conference games and an impressive 187-72 (.722) at home in Boise, including a perfect 14-0 mark in 2007-08.

The Broncos have recorded 12 winning seasons over Presnell's 17-year tenure. After going 15-15 in his first season (2005-06), the Broncos recorded four-consecutive winning seasons, including a then-school-record 24 wins in both the 2006-07 (24-9) and 2007-08 (24-8) campaigns.

Over the course of his tenure Presnell's Broncos have pushed the tempo of the game. His teams are routinely ranked among the top scoring and rebounding teams in the conference and have set numerous school records along the way. Presnell coached teams have set the school record for points in a season four times: in 2006-07 (2,275), 2007-08 (2,330), 2014-15 (2,331), and 2018-19 (2,478). His Bronco teams have also recorded nine of the top-10 season totals all-time (50 years). In rebounding the Broncos have turned in the top nine totals all-time and have set the record three times: in 2005-06 (1,252), 2006-07 (1,330), and 2007-08 (1,335).

They have seven of the top-10 scoring averages in program history, eight of the top-10 season marks for field goals made, and all of the top-10 season tallies in 3-point field goals made.

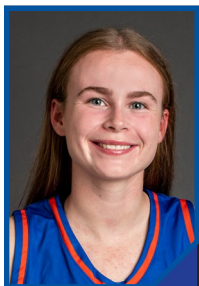
In 2006-07, Presnell led the Broncos to the program's first postseason appearance under his watch, and first since 1998. Boise State went 24-9 overall, winning the WAC regular-season and tournament titles to advance to the NCAA Tournament for just the second time in program history, and to the postseason for the first time since making the 1998 WNIT. For his coaching performance he was named the WAC and WBCA Division I Regional Coach of the Year.

In addition to the regular-season and conference tournament titles, and NCAA Tournament appearances, program honors during Presnell's tenure at Boise State include: advancing to the second round in both the 2008 Women's National Invitation Tournament and the 2014 Women's Basketball Invitational; one WBCA All-Region and one Honorable Mention All-America honors; 22 all-conference honors, 10 conference all-freshmen team members, two conference newcomers of the year, two freshmen of the year, five conference all-defensive team honors, nine conference all-tournament team honors with six tournament MVPs, eight CoSIDA Academic All-District selections and a combined 89 academic all-conference honors.

His student-athletes have accumulated numerous honors along the way: one All-American; seven individuals have earned 10 honorable mention All-American awards; five league players of the year; 11 freshman/newcomers of the year; 35 players have combined for 55 all-conference honors; 10 conference all-freshmen team members; four conference all-defensive team members; 41 individuals have combined for 105 academic all-conference honors; 14 combined for 16 national academic honors including two academic All-Americans.

Presnell, a Lapwai, Idaho, native graduated from Northwest Nazarene in Nampa, Idaho, in 1983 with a B.A. in physical education. He continued his studies in physical education at Seattle Pacific, where he earned a master's degree in 1989. He and his wife, former SPU gymnast Susan Nolte, live in Meridian, Idaho. They have two children, a daughter, Jacquelyn, and a son, Ryder.

2022-23 BOISE STATE PHOTO ROSTER



4 - Dani Bayes
G • FR
Brisbane, Australia
Sheldon College



11 - Kaitlin Burgess
G • SR
Auckland, New Zealand
Coll. of Southern Idaho



24 - Jayda Clark
G • SO
Richland, Wash.
Richland HS



1 - Mya Hansen
G • FR
Billings, Mont.
Billings Central Catholic



5 - Allie Hueckman
G • R-FR
Burns, Ore.
Burns HS



22 - Trista Hull
F • SO
Yakima, Wash.
La Salle HS



23 - Elodie Lalotte
F • JR
Paris, France
Orangewood Academy



2 - Linsey Lovrovich
G • SO
Gig Harbor, Wash.
Peninsula HS



21 - Sydney McQuieter
F • JR
Keller, Texas
Boston College



33 - Abby Muse
F • JR
Brentwood, Calif.
Heritage HS



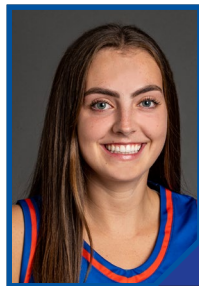
12 - Mary Kay Naro
G • JR
Beaverton, Ore.
Beaverton HS



30 - Mackenzie Naro
G • SO
Beaverton, Ore.
Beaverton HS



14 - Anna Ostlie
G • JR
Scottsdale, Ariz.
Chaparral HS



32 - Natalie Pasco
G • FR
Danville, Calif.
San Ramon Valley HS



3 - Mandy Simpson
F • SR
Boise, Idaho
Oklahoma



0 - Tatum Thompson
G • FR
Woodinville, Wash.
Woodinville HS

COACHING STAFF

Head Coach: Gordy Presnell (18th season)
Assistant Coach: Heather Sower (21st season)
Assistant Coach: Cariann Ramirez (Seventh season)
Assistant Coach: Mike Petrino (Second season)
Director of Operations: Cori Smith (Second season)
Athletic Trainer: Mary-Grace Testa (Second season)
Sports Performance: Lauren Sale (First season)

PRONUNCIATION GUIDE

Mya Hansen.....MY-uh
Allie Huckeman.....HECK-man
Elodie Lalotte.....El-oh-DEE Lah-lot
Mackenzie Naro.....Narrow
Mary Kay Naro.....Narrow
Linsey Lovrovich.....LAHV-roh-vich
Abby Muse.....Muse
Anna Ostlie.....OSS-lee
Gordy Presnell.....PRESS-nell
Heather Sower.....So-er

2022-2023 Boise State Women's Basketball
Overall Statistics (as of Nov 28, 2022)

Overall Record: 3-4 Home: 3-1 Away: 0-1 Neutral: 0-2

#	Player	GP-GS	MIN	AVG	FG		3PT		FT		Rebounds				PF	DQ	A	TO	BLK	STL	PTS	AVG
					FG-FGA	FG%	3FG-FGA	3FG%	FT-FTA	FT%	OFF	DEF	TOT	AVG								
23	Lalotte, Elodie	7-7	168	24.0	41-75	.547	0-0	.000	16-22	.727	10	29	39	5.6	17	2	3	12	2	7	98	14.0
33	Muse, Abby	7-7	191	27.3	26-52	.500	0-0	.000	30-42	.714	22	47	69	9.9	20	1	12	12	21	8	82	11.7
32	Pasco, Natalie	7-0	138	19.7	27-59	.458	14-33	.424	7-7	1.000	3	8	11	1.6	8	0	5	13	1	3	75	10.7
04	Bayes, Dani	7-7	186	26.6	24-65	.369	10-33	.303	4-5	.800	3	17	20	2.9	11	0	12	13	1	5	62	8.9
01	Hansen, Mya	7-5	126	18.0	12-33	.364	4-13	.308	8-8	1.000	3	10	13	1.9	10	0	10	13	0	5	36	5.1
03	Simpson, Mandy	4-0	66	16.5	9-19	.474	0-0	.000	1-4	.250	4	6	10	2.5	7	0	11	11	1	2	19	4.8
22	Hull, Trista	7-0	82	11.7	7-18	.389	0-2	.000	16-21	.762	10	22	32	4.6	13	1	1	6	2	1	30	4.3
05	Hueckman, Allie	5-0	42	8.4	7-16	.438	3-7	.429	3-4	.750	4	3	7	1.4	4	0	1	0	0	0	20	4.0
12	Naro, Mary Kay	7-7	203	29.0	4-37	.108	1-16	.063	16-21	.762	12	25	37	5.3	6	0	25	16	7	6	25	3.6
02	Lovrovich, Linsey	5-0	43	8.6	7-14	.500	2-3	.667	1-3	.333	2	9	11	2.2	4	0	1	7	0	2	17	3.4
14	Ostlie, Anna	7-2	98	14.0	6-18	.333	4-12	.333	0-0	.000	0	7	7	1.0	8	0	5	6	0	1	16	2.3
24	Clark, Jayda	4-0	45	11.3	2-6	.333	0-1	.000	5-6	.833	0	4	4	1.0	2	0	8	3	0	2	9	2.3
21	McQuietor, Sydney	4-0	28	7.0	2-4	.500	0-0	.000	2-6	.333	2	1	3	0.8	4	0	3	2	1	0	6	1.5
30	Naro, Mackenzie	3-0	9	3.0	1-3	.333	1-3	.333	0-0	.000	0	0	0	0.0	0	0	0	0	0	0	3	1.0
Total		7	1425	203.6	175-419	.418	39-123	.317	109-149	.732	89	208	297	42.4	114	4	97	119	36	42	498	71.14
Opponents			1425	203.6	161-442	.364	47-133	.353	83-118	.703	75	168	243	34.7	138	4	69	106	16	57	452	64.57

Team Statistics	Boise	OPP	Conf	Date	Opponent	W/L	Score	Att.
SCORING	498	452		11/07/22	MULTNOMAH	W	121-64	516
Points Per Game	71.1	64.6		11/11/22	EASTERN WASH.	L	74-83	733
Scoring Margin	6.5	-		11/13/22	WEBER ST.	W	63-52	616
FIELD GOALS-ATT	175-419	161-442		11/17/22	at UC Davis	L	62-69	309
Field Goal Pct	.418	.364		11/20/22	PORTLAND ST.	W	71-61	689
3 POINT FG-ATT	39-123	47-133		11/25/22	vs North Dakota St.	L	53-68	826
3PT FG Pct	.317	.353		11/27/22	vs Milwaukee	L	54-55	712
3PT Made Per Game	5.6	6.7						
FREE THROWS-ATT	109-149	83-118	*					
FT Pct	.732	.703						
FT Made Per Game	15.6	11.9						
REBOUNDS	297	243						
Rebounds Per Game	42.4	34.7						
Rebounds Margin	7.7	-						
ASSISTS	97	69						
Assists Per Game	13.9	9.9						
TURNOVERS	119	106						
Turnovers Per Game	17.0	15.1						
Turnovers Margin	-1.9	-						
Assist/Turnover Ratio	0.8	0.7						
STEALS	42	57						
Steals Per Game	6.0	8.1						
BLOCKS	36	16						
Blocks Per Game	5.1	2.3						
ATTENDANCE	2,554	309						
Dates/Avg Per Date	4-639	1-309						
Neutral Site #/Avg	-	2-769						

* = Conference game

Score by Periods	1st	2nd	3rd	4th	OT	Total
Boise St.	121	111	129	129	8	498
Opponents	126	90	107	120	9	452

**2021-2022 Boise State University Women's Basketball
Overall Statistics (as of Mar 6, 2022)**

Overall Record: 8-21 Conf: 4-13 Home: 7-7 Away: 1-11 Neutral: 0-3

#	Player	GP-GS	MIN	AVG	FG		3PT		FT		Rebounds				PF	DQ	A	TO	BLK	STL	PTS	AVG
					FG-FGA	FG%	3FG-FGA	3FG%	FT-FTA	FT%	OFF	DEF	TOT	AVG								
15	Leonidas, Dominique	28-28	861	30.8	121-281	.431	10-43	.233	61-83	.735	23	66	89	3.2	73	1	96	77	3	35	313	11.2
33	Muse, Abby	29-29	747	25.8	103-212	.486	0-0	.000	89-134	.664	87	139	226	7.8	78	2	40	78	38	34	295	10.2
23	Lalotte, Elodie	26-26	600	23.1	113-238	.475	0-0	.000	26-57	.456	58	135	193	7.4	63	1	20	46	10	11	252	9.7
12	Naro, Mary Kay	29-29	1001	34.5	90-277	.325	31-115	.270	43-60	.717	34	92	126	4.3	41	1	106	85	22	20	254	8.8
14	Ostlie, Anna	29-29	878	30.3	77-233	.330	48-159	.302	14-25	.560	15	65	80	2.8	68	0	52	58	3	25	216	7.4
25	Bowers, Rachel	29-0	442	15.2	64-124	.516	4-9	.444	19-27	.704	25	88	113	3.9	51	1	17	26	20	7	151	5.2
22	Hull, Trista	29-4	476	16.4	46-129	.357	0-9	.000	47-80	.588	42	91	133	4.6	54	1	27	48	13	10	139	4.8
11	Burgess, Kaitlin	10-0	169	16.9	15-45	.333	12-33	.364	1-2	.500	1	9	10	1.0	12	0	9	9	0	5	43	4.3
24	Clark, Jayda	23-0	357	15.5	26-104	.250	8-52	.154	9-13	.692	9	25	34	1.5	20	0	17	14	0	11	69	3.0
02	Lovrovich, Linsey	22-0	175	8.0	14-42	.333	4-14	.286	10-16	.625	11	15	26	1.2	10	0	8	9	3	2	42	1.9
21	McQuieter, Sydney	18-0	84	4.7	10-30	.333	0-0	.000	1-2	.500	7	7	14	0.8	10	0	4	2	0	2	21	1.2
10	Njoku, Chinma	2-0	6	3.0	1-2	.500	0-0	.000	0-0	.000	2	1	3	1.5	1	0	0	0	0	0	2	1.0
30	Naro, Mackenzie	7-0	29	4.1	1-6	.167	1-6	.167	0-0	.000	0	0	0	0.0	1	0	1	0	0	0	3	0.4
Total		29	5825	200.9	681-1723	.395	118-440	.268	320-499	.641	374	793	1167	40.2	482	7	397	466	112	162	1800	62.07
Opponents			5825	200.9	674-1714	.393	164-538	.305	378-504	.750	284	715	999	34.4	462	7	324	370	88	236	1890	65.17

Team Statistics	Boise	OPP	Conf	Date	Opponent	W/L	Score	Att.
SCORING	1800	1890		11/13/21	LONG BEACH ST.	L	38-61	718
Points Per Game	62.1	65.2		11/15/21	OREGON TECH	W	83-48	400
Scoring Margin	-3.1	-		11/20/21	at BYU	L	40-84	1,278
FIELD GOALS-ATT	681-1723	674-1714		11/26/21	vs Louisiana Tech	L	57-60	212
Field Goal Pct	.395	.393		11/27/21	vs Wisconsin	L	45-60	952
3 POINT FG-ATT	118-440	164-538		12/02/21	SEATTLE U	L	61-63	427
3PT FG Pct	.268	.305		12/05/21	FLA. ATLANTIC	W	76-64	505
3PT Made Per Game	4.1	5.7		12/10/21	at Eastern Wash.	W	72-63	394
FREE THROWS-ATT	320-499	378-504		12/12/21	at Washington St.	L	55-62	715
FT Pct	.641	.750		12/18/21	at Pepperdine	L	54-56	202
FT Made Per Game	11.0	13.0		12/20/21	WARNER PACIFIC	W	90-39	473
REBOUNDS	1167	999	*	12/28/21	at Colorado St.	L	77-81	1,209
Rebounds Per Game	40.2	34.4	*	12/31/21	NEW MEXICO	L	68-72	603
Rebounds Margin	5.8	-	*	01/09/22	UTAH ST.	W	71-47	872
ASSISTS	397	324	*	01/13/22	at UNLV	L	51-73	454
Assists Per Game	13.7	11.2	*	01/15/22	at San Diego St.	L	63-80	410
TURNOVERS	466	370	*	01/19/22	WYOMING	W	70-59	542
Turnovers Per Game	16.1	12.8	*	01/22/22	COLORADO ST.	W	69-64	796
Turnovers Margin	-3.3	-	*	01/26/22	at Wyoming	L	47-61	2,009
Assist/Turnover Ratio	0.9	0.9	*	01/29/22	at San Jose St.	L	59-61	340
STEALS	162	236	*	02/02/22	FRESNO ST.	L	56-62	1,032
Steals Per Game	5.6	8.1	*	02/05/22	SAN DIEGO ST.	W	72-63	919
BLOCKS	112	88	*	02/09/22	UNLV	L	52-69	597
Blocks Per Game	3.9	3.0	*	02/12/22	at Utah St.	L	55-63	535
ATTENDANCE	9,549	12,594	*	02/15/22	at Air Force	L	63-77	326
Dates/Avg Per Date	14-682	12-1,050	*	02/19/22	at New Mexico	L	62-89	4,722
Neutral Site #/Avg	-	3-388	*	02/24/22	NEVADA	L	75-76	805
			*	02/28/22	SAN JOSE ST.	L	63-68	860
				03/06/22	vs San Diego St.	L	56-65	0

Score by Periods	1st	2nd	3rd	4th	OT	Total
Boise St.	446	400	473	469	12	1800
Opponents	430	422	530	495	13	1890

* = Conference game