



**Fresno St. at BYU**

11/13/21 Marriott Center, Provo  
2021-22 Women's Basketball

Game Time: 4:00 PM  
Game Duration: 1:51  
Attendance: 1,152

Officials: Infini Robinson, Shelley Nakasone, Kelly Broomfield

Fresno St. - 64

Record: 1-1

NO.	Name	Min	FG	3P	FT	Rebounds			Fouls		TP	AS	TO	ST	Blocks		+/-
			M-A	M-A	M-A	OR	DR	TOT	PF	FD					BS	BA	
13	Amiee Book	F 32:15	5-11	3-7	0-0	0	4	4	0	1	13	0	2	0	0	1	-28
42	Maria Guimaraes	C 15:50	4-5	0-0	0-0	2	1	3	1	1	8	0	0	0	0	0	-4
0	Hanna Cavinder	G 39:25	5-13	1-2	3-4	0	4	4	0	3	14	2	6	0	0	3	-14
1	Haley Cavinder	G 37:41	2-6	1-3	4-4	1	7	8	2	6	9	10	3	1	0	1	-14
30	Yanina Todorova	G 23:11	0-5	0-4	0-0	0	1	1	1	0	0	0	0	0	0	0	-6
5	Daylee Dunn	13:45	0-3	0-3	2-2	0	1	1	1	2	2	0	0	1	0	0	-9
24	Wytalla Motta	12:56	1-5	0-1	8-10	2	1	3	2	6	10	0	2	1	0	0	-10
21	Imani Lacy	10:40	2-4	0-0	3-3	0	2	2	1	3	7	0	0	0	0	2	-7
4	Jessica Peterson	03:38	0-1	0-0	1-2	0	0	0	0	1	1	0	0	0	0	0	4
14	Tamia Stricklin	10:39	0-0	0-0	0-0	0	1	1	2	0	0	1	0	0	0	0	8
Team						3	5	8			0		0				
<b>Totals</b>			19-53	5-20	21-25	8	27	35	10	23	64	13	13	3	0	7	-16

Technical Fouls:Lacy 2<sup>nd</sup>9:36

Shooting By Period		
1 <sup>st</sup> FG%	6-15	40.0%
3PT%	3-8	37.5%
FT%	1-1	100%
2 <sup>nd</sup> FG%	4-16	25.0%
3PT%	0-6	0.0%
FT%	5-6	83.3%
3 <sup>rd</sup> FG%	6-13	46.2%
3PT%	1-5	20.0%
FT%	2-4	50%
4 <sup>th</sup> FG%	3-9	33.3%
3PT%	1-1	100.0%
FT%	13-14	92.9%
GM FG%	19-53	35.8%
3PT%	5-20	25.0%
FT%	21-25	84.0%

Dead Ball Rebounds: 1, 0

BYU - 80

Record: 2-0

NO.	Name	Min	FG	3P	FT	Rebounds			Fouls		TP	AS	TO	ST	Blocks		+/-
			M-A	M-A	M-A	OR	DR	TOT	PF	FD					BS	BA	
12	Lauren Gustin	F 25:30	7-12	0-0	2-2	7	6	13	4	1	16	0	0	0	0	0	16
2	Shaylee Gonzales	G 32:55	9-21	0-5	4-5	2	3	5	4	4	22	3	1	4	2	0	20
5	Maria Albiero	G 28:41	2-6	0-1	0-0	0	3	3	3	1	4	8	2	0	0	0	23
10	Tegan Graham	G 33:28	2-4	2-3	0-0	1	5	6	2	1	6	8	0	5	0	0	22
13	Paisley Harding	G 29:54	8-15	4-8	2-2	0	0	0	2	0	22	2	2	1	0	0	13
11	Kaylee Smiler	17:46	2-4	2-4	0-0	0	1	1	3	0	6	1	1	0	0	0	2
22	Sara Hamson	15:31	2-5	0-0	0-0	1	4	5	2	0	4	0	2	0	4	0	-3
3	Nani Falatea	06:07	0-1	0-0	0-0	1	2	3	1	1	0	1	0	0	0	0	-2
25	Emma Calvert	05:06	0-3	0-1	0-0	0	1	1	2	0	0	0	0	0	1	0	-3
4	Arielle Mackey-Williams	02:31	0-1	0-0	0-0	0	0	0	0	1	0	0	0	0	0	0	-4
24	Rose Bubakar	02:31	0-0	0-0	0-0	0	0	0	0	0	0	0	0	0	0	0	-4
Team						1	4	5			0		0				
<b>Totals</b>			32-72	8-22	8-9	13	29	42	23	9	80	23	8	10	7	0	16

Technical Fouls::NONE

Shooting By Period		
1 <sup>st</sup> FG%	8-21	38.1%
3PT%	1-6	16.7%
FT%	2-2	100%
2 <sup>nd</sup> FG%	8-18	44.4%
3PT%	0-3	0.0%
FT%	2-2	100%
3 <sup>rd</sup> FG%	9-16	56.3%
3PT%	5-8	62.5%
FT%	1-1	100%
4 <sup>th</sup> FG%	7-17	41.2%
3PT%	2-5	40.0%
FT%	3-4	75%
GM FG%	32-72	44.4%
3PT%	8-22	36.4%
FT%	8-9	88.9%

Dead Ball Rebounds: 1, 0

	FSU	BYU
Biggest lead	3 (1 <sup>st</sup> 8:03)	22 (4 <sup>th</sup> 3:40)
Best Scoring Run	6(1 <sup>st</sup> 1:04)	9(1 <sup>st</sup> 4:39)
Lead Changes	2	
Times Tied	1	
Time with Lead	02:33	36:39

	FSU	BYU
Points from Turnovers	6	19
Paint	24	42
Second Chance	1	6
Fast Breaks	13	16
Bench	20	10

	Period by Period Scoring				
	1st	2nd	3rd	4th	TOT
FSU	16	13	15	20	64
BYU	19	18	24	19	80



**Fresno St. at BYU**

11/13/21 Marriott Center, Provo  
2021-22 Women's Basketball

Game Time: 4:00 PM

Game Duration: 1:51

Attendance: 1,152

Officials: Infini Robinson, Shelley Nakasone, Kelly Broomfield

**Period 1**

**Quarter Starters:**

<b>BYU</b>	2 Gonzales S	5 Albiero M	10 Graham T	12 Gustin L	13 Harding P
<b>FSU</b>	0 Cavinder H	1 Cavinder H	13 Book A	30 Todorova Y	42 Guimaraes M

Game Time	BYU	Score	Diff	FSU
10:00	12 GUSTIN L jumpball won			42 GUIMARAES M jumpball lost
09:55	13 HARDING P 3pt FG , jump shot missed			
09:49				13 BOOK A defensive rebound (1)
09:39				30 TODOROVA Y 3pt FG , jump shot missed
09:34				1 CAVINDER H offensive rebound (1)
09:28				0 CAVINDER H 3pt FG second chance, jump shot missed
09:24	2 GONZALES S defensive rebound (1)			
09:12	2 GONZALES S 2pt FG in the paint, layup made (2)	<b>2-0</b>	<b>2</b>	
09:12	10 GRAHAM T assist (1)			
08:40		<b>2-3</b>	<b>-1</b>	1 CAVINDER H 3pt FG , step back jump shot made (3)
08:16	5 ALBIERO M 2pt FG outside the paint, jump shot missed			
08:11				13 BOOK A defensive rebound (2)
08:03		<b>2-5</b>	<b>-3</b>	42 GUIMARAES M 2pt FG in the paint, hook shot made (2)
07:46	13 HARDING P 2pt FG outside the paint, jump shot missed			
07:43				defensive rebound (4)
07:30				30 TODOROVA Y 3pt FG , jump shot missed
07:26	10 GRAHAM T defensive rebound (1)			
07:22	13 HARDING P 2pt FG fast break in the paint, driving layup made (2)	<b>4-5</b>	<b>-1</b>	
07:22	10 GRAHAM T assist (2)			
07:06		<b>4-7</b>	<b>-3</b>	0 CAVINDER H 2pt FG outside the paint, step back jump shot made (2)
07:06				1 CAVINDER H assist (1)
06:52	13 HARDING P 2pt FG in the paint, layup missed			
06:48	10 GRAHAM T offensive rebound (2)			
06:46	5 ALBIERO M 3pt FG second chance, jump shot missed			
06:43				1 CAVINDER H defensive rebound (2)
06:39				30 TODOROVA Y 2pt FG outside the paint, jump shot missed
06:34	12 GUSTIN L defensive rebound (1)			
06:32	2 GONZALES S 2pt FG fast break in the paint, layup made (4)	<b>6-7</b>	<b>-1</b>	
06:12	2 GONZALES S steal (1)			13 BOOK A turnover lost ball (1)
06:07	2 GONZALES S foul drawn (1)			1 CAVINDER H foul shooting (1 - 1)
06:07				30 TODOROVA Y substitution out
06:07				42 GUIMARAES M substitution out
06:07				5 DUNN D substitution in
06:07				24 MOTTA W substitution in
06:07	2 GONZALES S free throw fast break 1 - 2 made (5)	<b>7-7</b>	<b>0</b>	
06:07	2 GONZALES S free throw fast break 2 - 2 made (6)	<b>8-7</b>	<b>1</b>	
05:49				5 DUNN D 3pt FG , step back jump shot missed
05:46	12 GUSTIN L defensive rebound (2)			
05:37	12 GUSTIN L 2pt FG in the paint, layup missed			
05:33				24 MOTTA W defensive rebound (1)
05:25	10 GRAHAM T steal (1)			1 CAVINDER H turnover bad pass (1)
05:10	2 GONZALES S foul drawn (2)			24 MOTTA W foul personal (1 - 2)



**Fresno St. at BYU**

11/13/21 Marriott Center, Provo  
2021-22 Women's Basketball

**Game Time:** 4:00 PM  
**Game Duration:** 1:51  
**Attendance:** 1,152

**Officials:** Infini Robinson, Shelley Nakasone, Kelly Broomfield

Game Time	BYU	Score	Diff	FSU
05:10	13 HARDING P substitution out			
05:10	11 SMILER K substitution in			
05:03	11 SMILER K 3pt FG from turnover, jump shot made (3)	<b>11-7</b>	<b>4</b>	
05:03	10 GRAHAM T assist (3)			
04:43	2 GONZALES S steal (2)			1 CAVINDER H turnover bad pass (2)
04:39	2 GONZALES S 2pt FG fast break from turnover in the paint, layup made (8)	<b>13-7</b>	<b>6</b>	
04:36				Timeout 30 Sec
04:21				13 BOOK A 3pt FG ; jump shot missed
04:14				24 MOTTA W offensive rebound (2)
04:08				0 CAVINDER H turnover travel (1)
04:08				1 CAVINDER H substitution out
04:08				30 TODOROVA Y substitution in
04:08				5 DUNN D substitution out
04:08				1 CAVINDER H substitution in
03:45	11 SMILER K 3pt FG from turnover, jump shot missed			
03:41				defensive rebound (8)
03:41	12 GUSTIN L foul personal (1 - 1)			24 MOTTA W foul drawn (1)
03:36		<b>13-10</b>	<b>3</b>	13 BOOK A 3pt FG ; jump shot made (3)
03:36				0 CAVINDER H assist (1)
03:14	5 ALBIERO M 2pt FG in the paint, pull up jump shot missed			
03:09	12 GUSTIN L offensive rebound (3)			
03:08	12 GUSTIN L 2pt FG second chance in the paint, layup made (2)	<b>15-10</b>	<b>5</b>	
02:54				24 MOTTA W 2pt FG in the paint, driving layup missed
02:51	12 GUSTIN L defensive rebound (4)			
02:42	5 ALBIERO M 2pt FG in the paint, driving layup made (2)	<b>17-10</b>	<b>7</b>	
02:42	11 SMILER K assist (1)			
02:24	5 ALBIERO M foul personal (1 - 2)			1 CAVINDER H foul drawn (1)
02:24				24 MOTTA W substitution out
02:24				21 LACY I substitution in
02:24	5 ALBIERO M substitution out			
02:24	13 HARDING P substitution in			
02:16		<b>17-12</b>	<b>5</b>	21 LACY I 2pt FG in the paint, layup made (2)
02:16				1 CAVINDER H assist (2)
02:16	10 GRAHAM T foul shooting (1 - 3)			21 LACY I foul drawn (1)
02:16	10 GRAHAM T substitution out			
02:16	22 HAMSON S substitution in			
02:16		<b>17-13</b>	<b>4</b>	21 LACY I free throw 1 - 1 made (3)
02:16				30 TODOROVA Y substitution out
02:16				42 GUIMARAES M substitution in
02:03	12 GUSTIN L 2pt FG outside the paint, pull up jump shot missed			
02:00	22 HAMSON S offensive rebound (1)			
01:57	11 SMILER K turnover travel (1)			
01:37				0 CAVINDER H 2pt FG from turnover in the paint, driving layup missed
01:33	12 GUSTIN L defensive rebound (5)			
01:24	22 HAMSON S 2pt FG in the paint, hook shot missed			
01:20	12 GUSTIN L offensive rebound (6)			
01:17	2 GONZALES S 3pt FG second chance, jump shot missed			



Official Basketball Play by Play - 1st Period

**Fresno St. at BYU**

11/13/21 Marriott Center, Provo  
2021-22 Women's Basketball

**Game Time:** 4:00 PM

**Game Duration:** 1:51

**Attendance:** 1,152

**Officials:** Infini Robinson, Shelley Nakasone, Kelly Broomfield

Game Time	BYU	Score	Diff	FSU
01:14	12 GUSTIN L offensive rebound (7)			
01:12	11 SMILER K 3pt FG second chance, jump shot missed			
01:08				1 CAVINDER H defensive rebound (3)
01:04		<b>17-16</b>	<b>1</b>	13 BOOK A 3pt FG fast break, jump shot made (6)
01:04				1 CAVINDER H assist (3)
00:42	13 HARDING P 2pt FG outside the paint, pull up jump shot made (4)	<b>19-16</b>	<b>3</b>	
00:42	2 GONZALES S assist (1)			
00:19				21 LACY I 2pt FG outside the paint, jump shot blocked
00:19	22 HAMSON S block (1)			
00:19				offensive rebound (10)
00:19				42 GUIMARAES M substitution out
00:19				4 PETERSON J substitution in
00:18				0 CAVINDER H turnover out of bounds (2)
00:05	2 GONZALES S 2pt FG from turnover outside the paint, jump shot missed			
00:01				21 LACY I defensive rebound (1)
<b>END OF PERIOD</b>				
<b>BYU 19-16 FSU</b>				



**Fresno St. at BYU**

11/13/21 Marriott Center, Provo  
2021-22 Women's Basketball

Game Time: 4:00 PM  
Game Duration: 1:51  
Attendance: 1,152

Officials: Infini Robinson, Shelley Nakasone, Kelly Broomfield

**Fresno St. - 16**

NO.	Name	F	Min	FG			Rebounds			Fouls		TP	AS	TO	ST	Blocks		+/-
				M-A	3P	FT	OR	DR	TOT	PF	FD					BS	BA	
13	Amiee Book	F	10:00	2-3	2-3	0-0	0	2	2	0	0	6	0	1	0	0	0	-3
42	Maria Guimaraes	C	05:50	1-1	0-0	0-0	0	0	0	0	0	2	0	0	0	0	0	2
0	Hanna Cavinder	G	10:00	1-3	0-1	0-0	0	0	0	0	0	2	1	2	0	0	0	-3
1	Haley Cavinder	G	10:00	1-1	1-1	0-0	1	2	3	1	1	3	3	2	0	0	0	-3
30	Yanina Todorova	G	05:45	0-3	0-2	0-0	0	0	0	0	0	0	0	0	0	0	0	3
5	Daylee Dunn		01:59	0-1	0-1	0-0	0	0	0	0	0	0	0	0	0	0	0	-7
24	Wytalla Motta		03:43	0-1	0-0	0-0	1	1	2	1	1	0	0	0	0	0	0	-8
21	Imani Lacy		02:24	1-2	0-0	1-1	0	1	1	0	1	3	0	0	0	0	1	4
4	Jessica Peterson		00:19	0-0	0-0	0-0	0	0	0	0	0	0	0	0	0	0	0	0
Team							1	2	3			0		0				
<b>Totals</b>				6-15	3-8	1-1	3	8	11	2	3	16	4	5	0	0	1	-3

Shooting By Period		
1st FG%	6-15	40.0%
3PT%	3-8	37.5%
FT%	1-1	100%
GM FG%	6-15	40.0%
3PT%	3-8	37.5%
FT%	1-1	100.0%

Dead Ball Rebounds: 0, 0

Technical Fouls::NONE

**BYU - 19**

NO.	Name	F	Min	FG			Rebounds			Fouls		TP	AS	TO	ST	Blocks		+/-
				M-A	3P	FT	OR	DR	TOT	PF	FD					BS	BA	
12	Lauren Gustin	F	10:00	1-3	0-0	0-0	3	4	7	1	0	2	0	0	0	0	0	3
2	Shaylee Gonzales	G	10:00	3-5	0-1	2-2	0	1	1	0	2	8	1	0	2	0	0	3
5	Maria Albiero	G	07:36	1-4	0-1	0-0	0	0	0	1	0	2	0	0	0	0	0	7
10	Tegan Graham	G	07:44	0-0	0-0	0-0	1	1	2	1	0	0	3	0	1	0	0	5
13	Paisley Harding	G	07:14	2-5	0-1	0-0	0	0	0	0	0	4	0	0	0	0	0	-3
11	Kaylee Smiler		05:10	1-3	1-3	0-0	0	0	0	0	0	3	1	1	0	0	0	2
22	Sara Hamson		02:16	0-1	0-0	0-0	1	0	1	0	0	0	0	0	0	1	0	-2
Team							0	0	0			0		0				
<b>Totals</b>				8-21	1-6	2-2	5	6	11	3	2	19	5	1	3	1	0	3

Shooting By Period		
1st FG%	8-21	38.1%
3PT%	1-6	16.7%
FT%	2-2	100%
GM FG%	8-21	38.1%
3PT%	1-6	16.7%
FT%	2-2	100.0%

Dead Ball Rebounds: 0, 0

Technical Fouls::NONE

	FSU	BYU
Biggest lead	3 (1 <sup>st</sup> 8:03)	7 (1 <sup>st</sup> 2:42)
Best Scoring Run	6(1 <sup>st</sup> 1:04)	9(1 <sup>st</sup> 4:39)
Lead Changes	2	
Times Tied	1	
Time with Lead	02:33	06:39

Points from	FSU	BYU
Turnovers	0	7
Paint	4	12
Second Chance	0	2
Fast Breaks	3	8
Bench	3	3

	Period by Period Scoring				
	1st	2nd	3rd	4th	TOT
FSU	16	13	15	20	64
BYU	19	18	24	19	80



**Fresno St. at BYU**

11/13/21 Marriott Center, Provo  
2021-22 Women's Basketball

**Game Time:** 4:00 PM  
**Game Duration:** 1:51  
**Attendance:** 1,152

**Officials:** Infini Robinson, Shelley Nakasone, Kelly Broomfield

**Period 2**

**Quarter Starters:**

<b>BYU</b>	2 Gonzales S	11 Smiler K	12 Gustin L	13 Harding P	22 Hamson S
<b>FSU</b>	0 Cavinder H	1 Cavinder H	4 Peterson J	13 Book A	21 Lacy I

Game Time	BYU	Score	Diff	FSU
09:46				1 CAVINDER H 2pt FG in the paint, pull up jump shot blocked
09:46	22 HAMSON S block (2)			
09:41	22 HAMSON S defensive rebound (2)			
09:36				21 LACY I foul player technical (1 - 1)
09:36	13 HARDING P free throw 1 - 2 made (5)	<b>20-16</b>	<b>4</b>	
09:36	13 HARDING P free throw 2 - 2 made (6)	<b>21-16</b>	<b>5</b>	
09:36				21 LACY I substitution out
09:36				24 MOTTA W substitution in
09:32	2 GONZALES S 2pt FG outside the paint, jump shot missed			
09:28	12 GUSTIN L offensive rebound (8)			
09:26	13 HARDING P turnover travel (1)			
09:13				0 CAVINDER H 2pt FG from turnover outside the paint, jump shot blocked
09:13	2 GONZALES S block (1)			
09:12				offensive rebound (12)
09:12	11 SMILER K substitution out			
09:12	12 GUSTIN L substitution out			
09:12	5 ALBIERO M substitution in			
09:12	10 GRAHAM T substitution in			
09:12				4 PETERSON J substitution out
09:12				30 TODOROVA Y substitution in
08:56				13 BOOK A 3pt FG from turnover second chance, step back jump shot missed
08:51	5 ALBIERO M defensive rebound (1)			
08:37	22 HAMSON S turnover bad pass (1)			1 CAVINDER H steal (1)
08:32		<b>21-18</b>	<b>3</b>	13 BOOK A 2pt FG fast break from turnover in the paint, layup made (8)
08:32				1 CAVINDER H assist (4)
08:12	2 GONZALES S 2pt FG outside the paint, pull up jump shot made (10)	<b>23-18</b>	<b>5</b>	
08:12	13 HARDING P assist (1)			
07:54	13 HARDING P foul shooting (1 - 1)			24 MOTTA W foul drawn (2)
07:54		<b>23-19</b>	<b>4</b>	24 MOTTA W free throw 1 - 2 made (1)
07:54				24 MOTTA W free throw 2 - 2 missed
07:54	10 GRAHAM T defensive rebound (3)			
07:54	Timeout media			
07:54				0 CAVINDER H substitution out
07:54				14 STRICKLIN T substitution in
07:43	22 HAMSON S 2pt FG in the paint, layup made (2)	<b>25-19</b>	<b>6</b>	
07:43	5 ALBIERO M assist (1)			
07:24				1 CAVINDER H 2pt FG outside the paint, jump shot missed
07:20	defensive rebound (16)			
07:19				1 CAVINDER H substitution out
07:19				24 MOTTA W substitution out



**Fresno St. at BYU**

11/13/21 Marriott Center, Provo  
2021-22 Women's Basketball

**Game Time:** 4:00 PM  
**Game Duration:** 1:51  
**Attendance:** 1,152

**Officials:** Infini Robinson, Shelley Nakasone, Kelly Broomfield

Game Time	BYU	Score	Diff	FSU
07:19				0 CAVINDER H substitution in
07:19				42 GUIMARAES M substitution in
07:02	2 GONZALES S 2pt FG in the paint, driving layup missed			
06:58				42 GUIMARAES M defensive rebound (1)
06:54	10 GRAHAM T steal (2)			0 CAVINDER H turnover bad pass (3)
06:44	22 HAMSON S 2pt FG from turnover in the paint, layup made (4)	<b>27-19</b>	<b>8</b>	
06:44	13 HARDING P assist (2)			
06:10		<b>27-21</b>	<b>6</b>	42 GUIMARAES M 2pt FG in the paint, layup made (4)
06:10				14 STRICKLIN T assist (1)
05:56	2 GONZALES S 2pt FG in the paint, jump shot made (12)	<b>29-21</b>	<b>8</b>	
05:56	10 GRAHAM T assist (4)			
05:35				30 TODOROVA Y 3pt FG , jump shot missed
05:31				42 GUIMARAES M offensive rebound (2)
05:29				13 BOOK A 2pt FG second chance outside the paint, jump shot missed
05:24				42 GUIMARAES M offensive rebound (3)
05:06				13 BOOK A 2pt FG second chance in the paint, jump shot blocked
05:06	22 HAMSON S block (3)			
05:01	2 GONZALES S defensive rebound (2)			
05:00	22 HAMSON S substitution out			
05:00	12 GUSTIN L substitution in			
05:00				14 STRICKLIN T substitution out
05:00				42 GUIMARAES M substitution out
05:00				1 CAVINDER H substitution in
05:00				21 LACY I substitution in
04:55	2 GONZALES S 2pt FG in the paint, driving layup made (14)	<b>31-21</b>	<b>10</b>	
04:34	2 GONZALES S foul personal (1 - 2)			1 CAVINDER H foul drawn (2)
04:29		<b>31-23</b>	<b>8</b>	0 CAVINDER H 2pt FG in the paint, driving layup made (4)
04:29				1 CAVINDER H assist (5)
04:12	12 GUSTIN L 2pt FG in the paint, layup made (4)	<b>33-23</b>	<b>10</b>	
04:12	5 ALBIERO M assist (2)			
03:56				30 TODOROVA Y 3pt FG , jump shot missed
03:51	10 GRAHAM T defensive rebound (4)			
03:46	13 HARDING P 3pt FG , jump shot missed			
03:40				defensive rebound (16)
03:40	2 GONZALES S substitution out			
03:40	3 FALATEA N substitution in			
03:40				30 TODOROVA Y substitution out
03:40				5 DUNN D substitution in
03:20		<b>33-25</b>	<b>8</b>	21 LACY I 2pt FG in the paint, hook shot made (5)
03:20				1 CAVINDER H assist (6)
03:05	12 GUSTIN L 2pt FG in the paint, layup made (6)	<b>35-25</b>	<b>10</b>	
03:05	3 FALATEA N assist (1)			
02:48				5 DUNN D 3pt FG , jump shot missed
02:40	3 FALATEA N defensive rebound (1)			
02:28	13 HARDING P 2pt FG in the paint, layup missed			
02:24	12 GUSTIN L offensive rebound (9)			
02:23	12 GUSTIN L 2pt FG second chance in the paint, jump shot missed			



**Fresno St. at BYU**

11/13/21 Marriott Center, Provo  
2021-22 Women's Basketball

**Game Time:** 4:00 PM  
**Game Duration:** 1:51  
**Attendance:** 1,152

**Officials:** Infini Robinson, Shelley Nakasone, Kelly Broomfield

Game Time	BYU	Score	Diff	FSU
02:21	12 GUSTIN L offensive rebound (10)			
02:19	12 GUSTIN L 2pt FG second chance in the paint, layup made (8)	<b>37-25</b>	<b>12</b>	
01:59				1 CAVINDER H 3pt FG , jump shot missed
01:55	defensive rebound (22)			
01:54	13 HARDING P substitution out			
01:54	22 HAMSON S substitution in			
01:54				13 BOOK A substitution out
01:54				21 LACY I substitution out
01:54				14 STRICKLIN T substitution in
01:54				24 MOTTA W substitution in
01:43	5 ALBIERO M substitution out			
01:43	2 GONZALES S substitution in			
01:43	12 GUSTIN L 2pt FG in the paint, layup missed			
01:39				0 CAVINDER H defensive rebound (1)
01:35				0 CAVINDER H 2pt FG in the paint, layup blocked
01:35	22 HAMSON S block (4)			
01:27	3 FALATEA N defensive rebound (2)			
01:24	2 GONZALES S 3pt FG , jump shot missed			
01:14				0 CAVINDER H defensive rebound (2)
01:13	22 HAMSON S foul shooting (1 - 3)			5 DUNN D foul drawn (1)
01:13	10 GRAHAM T substitution out			
01:13	11 SMILER K substitution in			
01:13	3 FALATEA N substitution out			
01:13	5 ALBIERO M substitution in			
01:13		<b>37-26</b>	<b>11</b>	5 DUNN D free throw 1 - 2 made (1)
01:13		<b>37-27</b>	<b>10</b>	5 DUNN D free throw 2 - 2 made (2)
01:04	2 GONZALES S 2pt FG outside the paint, jump shot missed			
01:01	offensive rebound (24)			
00:55	2 GONZALES S 3pt FG second chance, jump shot missed			
00:49				1 CAVINDER H defensive rebound (4)
00:47	2 GONZALES S steal (3)			24 MOTTA W turnover bad pass (1)
00:36	22 HAMSON S 2pt FG from turnover in the paint, hook shot missed			
00:32				1 CAVINDER H defensive rebound (5)
00:28	11 SMILER K foul shooting (1 - 4)			5 DUNN D foul drawn (2)
00:28	22 HAMSON S substitution out			
00:28	10 GRAHAM T substitution in			
00:28	13 HARDING P substitution in			
00:28	5 ALBIERO M substitution out			
00:28		<b>37-28</b>	<b>9</b>	24 MOTTA W free throw fast break 1 - 2 made (2)
00:28		<b>37-29</b>	<b>8</b>	24 MOTTA W free throw fast break 2 - 2 made (3)
00:13	2 GONZALES S foul offensive (2 - 5)			24 MOTTA W foul drawn (3)
00:13	2 GONZALES S turnover offensive (1)			
00:13	2 GONZALES S substitution out			
00:13	10 GRAHAM T substitution out			
00:13	5 ALBIERO M substitution in			
00:13	22 HAMSON S substitution in			
00:02				24 MOTTA W 3pt FG from turnover, jump shot missed
00:00	5 ALBIERO M defensive rebound (2)			





Official Basketball Play by Play - 2nd Period

### Fresno St. at BYU

11/13/21 Marriott Center, Provo  
2021-22 Women's Basketball

**Game Time:** 4:00 PM

**Game Duration:** 1:51

**Attendance:** 1,152

**Officials:** Infini Robinson, Shelley Nakasone, Kelly Broomfield

Game Time	BYU	Score	Diff	FSU
END OF PERIOD				
BYU 37-29 FSU				



**Fresno St. at BYU**

11/13/21 Marriott Center, Provo  
2021-22 Women's Basketball

Game Time: 4:00 PM  
Game Duration: 1:51  
Attendance: 1,152

Officials: Infini Robinson, Shelley Nakasone, Kelly Broomfield

**Fresno St. - 13**

NO.	Name	F	Min	FG	3P	FT	Rebounds			Fouls		TP	AS	TO	ST	Blocks		+/-
				M-A	M-A	M-A	OR	DR	TOT	PF	FD					BS	BA	
13	Amiee Book	F	08:06	1-4	0-1	0-0	0	0	0	0	0	2	0	0	0	0	1	-9
42	Maria Guimaraes	C	02:19	1-1	0-0	0-0	2	1	3	0	0	2	0	0	0	0	0	-2
0	Hanna Cavinder	G	09:25	1-3	0-0	0-0	0	2	2	0	0	2	0	1	0	0	2	-3
1	Haley Cavinder	G	07:41	0-3	0-1	0-0	0	2	2	0	1	0	3	0	1	0	1	-3
30	Yanina Todorova	G	05:32	0-2	0-2	0-0	0	0	0	0	0	0	0	0	0	0	0	-5
4	Jessica Peterson		00:48	0-0	0-0	0-0	0	0	0	0	0	0	0	0	0	0	0	-2
24	Wytalla Motta		04:11	0-1	0-1	3-4	0	0	0	0	2	3	0	1	0	0	0	3
14	Tamia Stricklin		04:48	0-0	0-0	0-0	0	0	0	0	0	0	1	0	0	0	0	0
21	Imani Lacy		03:30	1-1	0-0	0-0	0	0	0	1	0	2	0	0	0	0	0	-6
5	Daylee Dunn		03:40	0-1	0-1	2-2	0	0	0	0	2	2	0	0	0	0	0	2
Team							1	1	2			0		0				
<b>Totals</b>				4-16	0-6	5-6	3	6	9	1	5	13	4	2	1	0	4	-5

Shooting By Period		
2 <sup>nd</sup> FG%	4-16	25.0%
3PT%	0-6	0.0%
FT%	5-6	83.3%
GM FG%	4-16	25.0%
3PT%	0-6	0.0%
FT%	5-6	83.3%

Dead Ball Rebounds: 0, 0

Technical Fouls:Lacy 2<sup>nd</sup>9:36

**BYU - 18**

NO.	Name	F	Min	FG	3P	FT	Rebounds			Fouls		TP	AS	TO	ST	Blocks		+/-
				M-A	M-A	M-A	OR	DR	TOT	PF	FD					BS	BA	
12	Lauren Gustin	F	05:48	3-5	0-0	0-0	3	0	3	0	0	6	0	0	0	0	0	2
2	Shaylee Gonzales	G	07:50	3-8	0-2	0-0	0	1	1	2	0	6	0	1	1	1	0	3
5	Maria Albiero	G	08:26	0-0	0-0	0-0	0	2	2	0	0	0	2	0	0	0	0	5
10	Tegan Graham	G	08:15	0-0	0-0	0-0	0	2	2	0	0	0	1	0	1	0	0	5
13	Paisley Harding	G	08:35	0-2	0-1	2-2	0	0	0	1	0	2	2	1	0	0	0	7
3	Nani Falatea		02:27	0-0	0-0	0-0	0	2	2	0	0	0	1	0	0	0	0	2
22	Sara Hamson		06:38	2-3	0-0	0-0	0	1	1	1	0	4	0	1	0	3	0	3
11	Kaylee Smiler		02:01	0-0	0-0	0-0	0	0	0	1	0	0	0	0	0	0	0	-2
Team							1	2	3			0		0				
<b>Totals</b>				8-18	0-3	2-2	4	10	14	5	0	18	6	3	2	4	0	5

Shooting By Period		
2 <sup>nd</sup> FG%	8-18	44.4%
3PT%	0-3	0.0%
FT%	2-2	100%
GM FG%	8-18	44.4%
3PT%	0-3	0.0%
FT%	2-2	100.0%

Dead Ball Rebounds: 0, 0

Technical Fouls::NONE

	FSU	BYU
Biggest lead	0 (1 <sup>st</sup> 10:00)	12 (2 <sup>nd</sup> 2:19)
Best Scoring Run	4(2 <sup>nd</sup> 0:28)	4(2 <sup>nd</sup> 6:44)
Lead Changes	0	
Times Tied	0	
Time with Lead	00:00	09:46

	FSU	BYU
Points from		
Turnovers	2	2
Paint	8	14
Second Chance	0	2
Fast Breaks	4	0
Bench	7	4

	Period by Period Scoring				
	1st	2nd	3rd	4th	TOT
FSU	16	13	15	20	64
BYU	19	18	24	19	80



**Fresno St. at BYU**

11/13/21 Marriott Center, Provo  
2021-22 Women's Basketball

Game Time: 4:00 PM  
Game Duration: 1:51  
Attendance: 1,152

Officials: Infini Robinson, Shelley Nakasone, Kelly Broomfield

**Fresno St. - 29**

NO.	Name	F	Min	FG	3P	FT	Rebounds			Fouls		TP	AS	TO	ST	Blocks		+/-
				M-A	M-A	M-A	OR	DR	TOT	PF	FD					BS	BA	
13	Amiee Book	F	18:06	3-7	2-4	0-0	0	2	2	0	0	8	0	1	0	0	1	-12
42	Maria Guimaraes	C	08:09	2-2	0-0	0-0	2	1	3	0	0	4	0	0	0	0	0	0
0	Hanna Cavinder	G	19:25	2-6	0-1	0-0	0	2	2	0	0	4	1	3	0	0	2	-6
1	Haley Cavinder	G	17:41	1-4	1-2	0-0	1	4	5	1	2	3	6	2	1	0	1	-6
30	Yanina Todorova	G	11:17	0-5	0-4	0-0	0	0	0	0	0	0	0	0	0	0	0	-2
5	Daylee Dunn		05:39	0-2	0-2	2-2	0	0	0	0	2	2	0	0	0	0	0	-5
24	Wytalla Motta		07:54	0-2	0-1	3-4	1	1	2	1	3	3	0	1	0	0	0	-5
21	Imani Lacy		05:54	2-3	0-0	1-1	0	1	1	1	1	5	0	0	0	0	1	-2
4	Jessica Peterson		01:07	0-0	0-0	0-0	0	0	0	0	0	0	0	0	0	0	0	-2
14	Tamia Stricklin		04:48	0-0	0-0	0-0	0	0	0	0	0	0	1	0	0	0	0	0
Team							2	3	5			0		0				
<b>Totals</b>				10-31	3-14	6-7	6	14	20	3	8	29	8	7	1	0	5	-8

Shooting By Period		
1 <sup>st</sup> FG%	6-15	40.0%
3PT%	3-8	37.5%
FT%	1-1	100%
2 <sup>nd</sup> FG%	4-16	25.0%
3PT%	0-6	0.0%
FT%	5-6	83.3%
GM FG%	10-31	32.3%
3PT%	3-14	21.4%
FT%	6-7	85.7%

Dead Ball Rebounds: 0, 0

Technical Fouls: Lacy 2<sup>nd</sup> 9:36

**BYU - 37**

NO.	Name	F	Min	FG	3P	FT	Rebounds			Fouls		TP	AS	TO	ST	Blocks		+/-
				M-A	M-A	M-A	OR	DR	TOT	PF	FD					BS	BA	
12	Lauren Gustin	F	15:48	4-8	0-0	0-0	6	4	10	1	0	8	0	0	0	0	0	5
2	Shaylee Gonzales	G	17:50	6-13	0-3	2-2	0	2	2	2	2	14	1	1	3	1	0	6
5	Maria Albiero	G	16:02	1-4	0-1	0-0	0	2	2	1	0	2	2	0	0	0	0	12
10	Tegan Graham	G	15:59	0-0	0-0	0-0	1	3	4	1	0	0	4	0	2	0	0	10
13	Paisley Harding	G	15:49	2-7	0-2	2-2	0	0	0	1	0	6	2	1	0	0	0	4
11	Kaylee Smiler		07:11	1-3	1-3	0-0	0	0	0	1	0	3	1	1	0	0	0	0
22	Sara Hamson		08:54	2-4	0-0	0-0	1	1	2	1	0	4	0	1	0	4	0	1
3	Nani Falatea		02:27	0-0	0-0	0-0	0	2	2	0	0	0	1	0	0	0	0	2
Team							1	2	3			0		0				
<b>Totals</b>				16-39	1-9	4-4	9	16	25	8	2	37	11	4	5	5	0	8

Shooting By Period		
1 <sup>st</sup> FG%	8-21	38.1%
3PT%	1-6	16.7%
FT%	2-2	100%
2 <sup>nd</sup> FG%	8-18	44.4%
3PT%	0-3	0.0%
FT%	2-2	100%
GM FG%	16-39	41.0%
3PT%	1-9	11.1%
FT%	4-4	100.0%

Dead Ball Rebounds: 0, 0

Technical Fouls: NONE

	FSU	BYU
Biggest lead	3 (1 <sup>st</sup> 8:03)	12 (2 <sup>nd</sup> 2:19)
Best Scoring Run	6 (1 <sup>st</sup> 1:04)	9 (1 <sup>st</sup> 4:39)
Lead Changes	2	
Times Tied	1	
Time with Lead	02:33	16:39

	FSU	BYU
Points from		
Turnovers	2	9
Paint	12	26
Second Chance	0	4
Fast Breaks	7	8
Bench	10	7

	Period by Period Scoring				
	1st	2nd	3rd	4th	TOT
FSU	16	13	15	20	64
BYU	19	18	24	19	80



**Fresno St. at BYU**

11/13/21 Marriott Center, Provo  
2021-22 Women's Basketball

Officials: Infini Robinson, Shelley Nakasone, Kelly Broomfield

**Period 3**

**Quarter Starters:**

<b>BYU</b>	2 Gonzales S	5 Albiero M	10 Graham T	12 Gustin L	13 Harding P
<b>FSU</b>	0 Cavinder H	1 Cavinder H	13 Book A	30 Todorova Y	42 Guimaraes M

Game Time	BYU	Score	Diff	FSU
10:00	11 SMILER K substitution out			
10:00	22 HAMSON S substitution out			
10:00	2 GONZALES S substitution in			
10:00	10 GRAHAM T substitution in			
10:00				5 DUNN D substitution out
10:00				14 STRICKLIN T substitution out
10:00				24 MOTTA W substitution out
10:00				13 BOOK A substitution in
10:00				30 TODOROVA Y substitution in
10:00				42 GUIMARAES M substitution in
09:44		<b>37-31</b>	<b>6</b>	42 GUIMARAES M 2pt FG in the paint, layup made (6)
09:44				1 CAVINDER H assist (7)
09:13	13 HARDING P 3pt FG , jump shot missed			
09:10	2 GONZALES S offensive rebound (3)			
09:09	2 GONZALES S 2pt FG second chance in the paint, jump shot missed			
09:09				defensive rebound (21)
08:53				0 CAVINDER H 2pt FG in the paint, floating jump shot missed
08:51	defensive rebound (27)			
08:43	13 HARDING P 3pt FG , jump shot made (9)	<b>40-31</b>	<b>9</b>	
08:43	2 GONZALES S assist (2)			
08:25	5 ALBIERO M foul personal (2 - 1)			1 CAVINDER H foul drawn (3)
08:17				0 CAVINDER H turnover travel (4)
08:01	13 HARDING P 3pt FG from turnover, jump shot made (12)	<b>43-31</b>	<b>12</b>	
08:01	5 ALBIERO M assist (3)			
07:51				13 BOOK A 3pt FG , jump shot missed
07:47	2 GONZALES S defensive rebound (4)			
07:40	5 ALBIERO M 2pt FG in the paint, layup made (4)	<b>45-31</b>	<b>14</b>	
07:22	13 HARDING P steal (1)			1 CAVINDER H turnover lost ball (3)
07:17	2 GONZALES S 2pt FG from turnover in the paint, layup missed			
07:13				1 CAVINDER H defensive rebound (6)
07:11	10 GRAHAM T steal (3)			0 CAVINDER H turnover lost ball (5)
07:05	10 GRAHAM T 3pt FG from turnover, jump shot missed			
07:01				13 BOOK A defensive rebound (3)
06:46	12 GUSTIN L foul personal (2 - 2)			42 GUIMARAES M foul drawn (1)
06:39				1 CAVINDER H 3pt FG , jump shot missed
06:35	12 GUSTIN L defensive rebound (11)			
06:29	2 GONZALES S 2pt FG outside the paint, pull up jump shot missed			
06:25				30 TODOROVA Y defensive rebound (1)
06:21		<b>45-33</b>	<b>12</b>	13 BOOK A 2pt FG fast break in the paint, layup made (10)
06:21				0 CAVINDER H assist (2)
05:56	2 GONZALES S 3pt FG , jump shot missed			
05:53				1 CAVINDER H defensive rebound (7)



**Fresno St. at BYU**

11/13/21 Marriott Center, Provo  
2021-22 Women's Basketball

**Game Time:** 4:00 PM  
**Game Duration:** 1:51  
**Attendance:** 1,152

**Officials:** Infini Robinson, Shelley Nakasone, Kelly Broomfield

Game Time	BYU	Score	Diff	FSU
05:48	2 GONZALES S foul personal (3 - 3)			13 BOOK A foul drawn (1)
05:48	2 GONZALES S substitution out			
05:48	11 SMILER K substitution in			
05:48				42 GUIMARAES M substitution out
05:48				24 MOTTA W substitution in
05:45	13 HARDING P foul personal (2 - 4)			1 CAVINDER H foul drawn (4)
05:39		<b>45-36</b>	<b>9</b>	13 BOOK A 3pt FG , jump shot made (13)
05:39				1 CAVINDER H assist (8)
05:22	13 HARDING P 3pt FG , jump shot made (15)	<b>48-36</b>	<b>12</b>	
05:22	10 GRAHAM T assist (5)			
05:10	10 GRAHAM T steal (4)			0 CAVINDER H turnover bad pass (6)
05:05	12 GUSTIN L 2pt FG fast break from turnover in the paint, layup made (10)	<b>50-36</b>	<b>14</b>	
05:05	5 ALBIERO M assist (4)			
05:00				Timeout 30 Sec
05:00				13 BOOK A substitution out
05:00				30 TODOROVA Y substitution out
05:00				5 DUNN D substitution in
05:00				14 STRICKLIN T substitution in
04:41	12 GUSTIN L foul shooting (3 - 5)			24 MOTTA W foul drawn (4)
04:41	Timeout media			
04:41	12 GUSTIN L substitution out			
04:41	22 HAMSON S substitution in			
04:41		<b>50-37</b>	<b>13</b>	24 MOTTA W free throw 1 - 2 made (4)
04:41				24 MOTTA W free throw 2 - 2 missed
04:41	10 GRAHAM T defensive rebound (5)			
04:31	11 SMILER K 3pt FG , jump shot made (6)	<b>53-37</b>	<b>16</b>	
04:31	5 ALBIERO M assist (5)			
04:14		<b>53-39</b>	<b>14</b>	0 CAVINDER H 2pt FG outside the paint, step back jump shot made (6)
04:00	22 HAMSON S turnover travel (2)			
04:00				24 MOTTA W substitution out
04:00				42 GUIMARAES M substitution in
03:43				5 DUNN D 3pt FG from turnover, jump shot missed
03:39	22 HAMSON S defensive rebound (3)			
03:27	5 ALBIERO M 2pt FG in the paint, turnaround jump shot missed			
03:22				0 CAVINDER H defensive rebound (3)
03:13		<b>53-41</b>	<b>12</b>	42 GUIMARAES M 2pt FG in the paint, driving layup made (8)
03:13				1 CAVINDER H assist (9)
02:54	13 HARDING P turnover bad pass (2)			
02:43		<b>53-43</b>	<b>10</b>	0 CAVINDER H 2pt FG from turnover in the paint, driving layup made (8)
02:23	10 GRAHAM T foul drawn (1)			14 STRICKLIN T foul shooting (1 - 1)
02:23	13 HARDING P substitution out			
02:23	2 GONZALES S substitution in			
02:20	5 ALBIERO M turnover bad pass (1)			5 DUNN D steal (1)
02:05				42 GUIMARAES M 2pt FG from turnover outside the paint, jump shot missed
02:03	5 ALBIERO M defensive rebound (3)			
02:03	5 ALBIERO M foul drawn (1)			1 CAVINDER H foul personal (2 - 2)



**Fresno St. at BYU**

11/13/21 Marriott Center, Provo  
2021-22 Women's Basketball

**Game Time:** 4:00 PM  
**Game Duration:** 1:51  
**Attendance:** 1,152

**Officials:** Infini Robinson, Shelley Nakasone, Kelly Broomfield

Game Time	BYU	Score	Diff	FSU
01:40	2 GONZALES S 2pt FG in the paint, floating jump shot made (16)	<b>55-43</b>	<b>12</b>	
01:40	2 GONZALES S foul drawn (3)			42 GUIMARAES M foul shooting (1 - 3)
01:40				14 STRICKLIN T substitution out
01:40				42 GUIMARAES M substitution out
01:40				13 BOOK A substitution in
01:40				21 LACY I substitution in
01:40	2 GONZALES S free throw 1 - 1 made (17)	<b>56-43</b>	<b>13</b>	
01:14				13 BOOK A 3pt FG , jump shot missed
01:10	11 SMILER K defensive rebound (1)			
00:56	10 GRAHAM T 3pt FG , jump shot made (3)	<b>59-43</b>	<b>16</b>	
00:56	2 GONZALES S assist (3)			
00:40				0 CAVINDER H 2pt FG outside the paint, jump shot blocked
00:40	2 GONZALES S block (2)			
00:40				offensive rebound (27)
00:40	2 GONZALES S substitution out			
00:40	13 HARDING P substitution in			
00:34	10 GRAHAM T foul personal (2 - 6)			0 CAVINDER H foul drawn (1)
00:34	5 ALBIERO M substitution out			
00:34	22 HAMSON S substitution out			
00:34	2 GONZALES S substitution in			
00:34	25 CALVERT E substitution in			
00:34				0 CAVINDER H free throw 1 - 2 missed
00:34				offensive dead ball rebound (1)
00:34		<b>59-44</b>	<b>15</b>	0 CAVINDER H free throw 2 - 2 made (9)
00:04	2 GONZALES S 2pt FG in the paint, driving layup made (19)	<b>61-44</b>	<b>17</b>	
00:04	10 GRAHAM T assist (6)			
<b>END OF PERIOD</b>				
<b>BYU 61-44 FSU</b>				



**Fresno St. at BYU**

11/13/21 Marriott Center, Provo  
2021-22 Women's Basketball

Game Time: 4:00 PM  
Game Duration: 1:51  
Attendance: 1,152

Officials: Infini Robinson, Shelley Nakasone, Kelly Broomfield

**Fresno St. - 15**

NO.	Name	F	Min	FG	3P	FT	Rebounds			Fouls		TP	AS	TO	ST	Blocks		+/-
				M-A	M-A	M-A	OR	DR	TOT	PF	FD					BS	BA	
13	Amiee Book	F	06:40	2-4	1-3	0-0	0	1	1	0	1	5	0	0	0	0	0	-11
42	Maria Guimaraes	C	06:32	2-3	0-0	0-0	0	0	0	1	1	4	0	0	0	0	0	-2
0	Hanna Cavinder	G	10:00	2-4	0-0	1-2	0	1	1	0	1	5	1	3	0	0	1	-9
1	Haley Cavinder	G	10:00	0-1	0-1	0-0	0	2	2	1	2	0	3	1	0	0	0	-9
30	Yanina Todorova	G	05:00	0-0	0-0	0-0	0	1	1	0	0	0	0	0	0	0	0	-6
24	Wytalla Motta		01:48	0-0	0-0	1-2	0	0	0	0	1	1	0	0	0	0	0	-2
5	Daylee Dunn		05:00	0-1	0-1	0-0	0	0	0	0	0	0	0	0	1	0	0	-3
14	Tamia Stricklin		03:20	0-0	0-0	0-0	0	0	0	1	0	0	0	0	0	0	0	2
21	Imani Lacy		01:40	0-0	0-0	0-0	0	0	0	0	0	0	0	0	0	0	0	-5
Team							1	1	2			0			0			
<b>Totals</b>				6-13	1-5	2-4	1	6	7	3	6	15	4	4	1	0	1	-9

Shooting By Period		
3rd FG%	6-13	46.2%
3PT%	1-5	20.0%
FT%	2-4	50%
GM FG%	6-13	46.2%
3PT%	1-5	20.0%
FT%	2-4	50.0%

Dead Ball Rebounds: 1, 0

Technical Fouls::NONE

**BYU - 24**

NO.	Name	F	Min	FG	3P	FT	Rebounds			Fouls		TP	AS	TO	ST	Blocks		+/-
				M-A	M-A	M-A	OR	DR	TOT	PF	FD					BS	BA	
12	Lauren Gustin	F	05:19	1-1	0-0	0-0	0	1	1	2	0	2	0	0	0	0	0	6
2	Shaylee Gonzales	G	06:30	2-6	0-1	1-1	1	1	2	1	1	5	2	0	0	1	0	11
5	Maria Albiero	G	09:25	1-2	0-0	0-0	0	1	1	1	1	2	3	1	0	0	0	8
10	Tegan Graham	G	10:00	1-2	1-2	0-0	0	1	1	1	1	3	2	0	2	0	0	9
13	Paisley Harding	G	08:17	3-4	3-4	0-0	0	0	0	1	0	9	0	1	1	0	0	3
11	Kaylee Smiler		05:48	1-1	1-1	0-0	0	1	1	0	0	3	0	0	0	0	0	5
22	Sara Hamson		04:06	0-0	0-0	0-0	0	1	1	0	0	0	0	1	0	0	0	2
25	Emma Calvert		00:35	0-0	0-0	0-0	0	0	0	0	0	0	0	0	0	0	0	1
Team							0	1	1			0			0			
<b>Totals</b>				9-16	5-8	1-1	1	7	8	6	3	24	7	3	3	1	0	9

Shooting By Period		
3rd FG%	9-16	56.3%
3PT%	5-8	62.5%
FT%	1-1	100%
GM FG%	9-16	56.3%
3PT%	5-8	62.5%
FT%	1-1	100.0%

Dead Ball Rebounds: 0, 0

Technical Fouls::NONE

	FSU	BYU
Biggest lead	0 (1 <sup>st</sup> 10:00)	17 (3 <sup>rd</sup> 0:04)
Best Scoring Run	6(3 <sup>rd</sup> 2:43)	8(3 <sup>rd</sup> 7:40)
Lead Changes	0	
Times Tied	0	
Time with Lead	00:00	09:44

	FSU	BYU
Points from		
Turnovers	2	5
Paint	8	8
Second Chance	1	0
Fast Breaks	2	2
Bench	1	3

	Period by Period Scoring				
	1st	2nd	3rd	4th	TOT
FSU	16	13	15	20	64
BYU	19	18	24	19	80



**Fresno St. at BYU**

11/13/21 Marriott Center, Provo  
2021-22 Women's Basketball

**Game Time:** 4:00 PM  
**Game Duration:** 1:51  
**Attendance:** 1,152

**Officials:** Infini Robinson, Shelley Nakasone, Kelly Broomfield

**Period 4**

**Quarter Starters:**

<b>BYU</b>	2 Gonzales S	10 Graham T	11 Smiler K	13 Harding P	25 Calvert E
<b>FSU</b>	0 Cavinder H	1 Cavinder H	5 Dunn D	13 Book A	21 Lacy I

Game Time	BYU	Score	Diff	FSU
09:51	13 HARDING P 2pt FG in the paint, layup made (17)	<b>63-44</b>	<b>19</b>	
09:51	10 GRAHAM T assist (7)			
09:26				0 CAVINDER H 2pt FG outside the paint, step back jump shot missed
09:23	defensive rebound (34)			
09:08	25 CALVERT E 2pt FG in the paint, hook shot missed			
09:05				21 LACY I defensive rebound (2)
08:42	11 SMILER K foul personal (2 - 1)			0 CAVINDER H foul drawn (2)
08:26	25 CALVERT E foul personal (1 - 2)			21 LACY I foul drawn (2)
08:14	25 CALVERT E foul shooting (2 - 3)			21 LACY I foul drawn (3)
08:14		<b>63-45</b>	<b>18</b>	21 LACY I free throw 1 - 2 made (6)
08:14		<b>63-46</b>	<b>17</b>	21 LACY I free throw 2 - 2 made (7)
08:06	13 HARDING P 3pt FG , jump shot missed			
08:02				1 CAVINDER H defensive rebound (8)
07:58		<b>63-48</b>	<b>15</b>	1 CAVINDER H 2pt FG fast break in the paint, driving layup made (5)
07:42	25 CALVERT E 2pt FG in the paint, hook shot missed			
07:39				5 DUNN D defensive rebound (1)
07:35				0 CAVINDER H 2pt FG in the paint, layup missed
07:30	25 CALVERT E defensive rebound (1)			
07:15	13 HARDING P 2pt FG in the paint, driving layup made (19)	<b>65-48</b>	<b>17</b>	
07:01				21 LACY I 2pt FG in the paint, layup blocked
07:01	25 CALVERT E block (1)			
06:56	10 GRAHAM T defensive rebound (6)			
06:54	2 GONZALES S foul drawn (4)			5 DUNN D foul shooting (1 - 1)
06:54	13 HARDING P substitution out			
06:54	25 CALVERT E substitution out			
06:54	5 ALBIERO M substitution in			
06:54	12 GUSTIN L substitution in			
06:54				21 LACY I substitution out
06:54				24 MOTTA W substitution in
06:54	2 GONZALES S free throw fast break 1 - 2 missed			
06:54	offensive dead ball rebound (1)			
06:54	2 GONZALES S free throw fast break 2 - 2 made (20)	<b>66-48</b>	<b>18</b>	
06:54				5 DUNN D substitution out
06:54				30 TODOROVA Y substitution in
06:44	12 GUSTIN L foul shooting (4 - 4)			24 MOTTA W foul drawn (5)
06:44		<b>66-49</b>	<b>17</b>	24 MOTTA W free throw 1 - 2 made (5)
06:44		<b>66-50</b>	<b>16</b>	24 MOTTA W free throw 2 - 2 made (6)
06:20	12 GUSTIN L 2pt FG outside the paint, jump shot made (12)	<b>68-50</b>	<b>18</b>	
06:20	5 ALBIERO M assist (6)			
06:06		<b>68-52</b>	<b>16</b>	24 MOTTA W 2pt FG in the paint, driving layup made (8)
05:51	2 GONZALES S 3pt FG , jump shot missed			
05:47				13 BOOK A defensive rebound (4)





**Fresno St. at BYU**

11/13/21 Marriott Center, Provo  
2021-22 Women's Basketball

**Game Time:** 4:00 PM  
**Game Duration:** 1:51  
**Attendance:** 1,152

**Officials:** Infini Robinson, Shelley Nakasone, Kelly Broomfield

Game Time	BYU	Score	Diff	FSU
05:45	2 GONZALES S steal (4)			13 BOOK A turnover bad pass (2)
05:41	2 GONZALES S 2pt FG fast break from turnover in the paint, floating jump shot made (22)	<b>70-52</b>	<b>18</b>	
05:26	11 SMILER K foul shooting (3 - 5)			24 MOTTA W foul drawn (6)
05:26		<b>70-53</b>	<b>17</b>	24 MOTTA W free throw 1 - 2 made (9)
05:26		<b>70-54</b>	<b>16</b>	24 MOTTA W free throw 2 - 2 made (10)
05:17	5 ALBIERO M turnover bad pass (2)			24 MOTTA W steal (1)
05:13	5 ALBIERO M foul personal (3 - 6)			0 CAVINDER H foul drawn (3)
05:13		<b>70-55</b>	<b>15</b>	0 CAVINDER H free throw fast break 1 - 2 made (10)
05:13		<b>70-56</b>	<b>14</b>	0 CAVINDER H free throw fast break 2 - 2 made (11)
05:13	11 SMILER K substitution out			
05:13	13 HARDING P substitution in			
04:48	10 GRAHAM T 3pt FG , jump shot made (6)	<b>73-56</b>	<b>17</b>	
04:48	5 ALBIERO M assist (7)			
04:28				24 MOTTA W 2pt FG in the paint, jump shot missed
04:25				24 MOTTA W offensive rebound (3)
04:24	10 GRAHAM T steal (5)			24 MOTTA W turnover lost ball (2)
04:16	13 HARDING P 3pt FG fast break from turnover, jump shot made (22)	<b>76-56</b>	<b>20</b>	
04:16	5 ALBIERO M assist (8)			
04:14				Timeout 30 Sec
03:57				24 MOTTA W 2pt FG in the paint, layup missed
03:53	12 GUSTIN L defensive rebound (12)			
03:40	12 GUSTIN L foul drawn (1)			24 MOTTA W foul shooting (2 - 2)
03:40	5 ALBIERO M substitution out			
03:40	3 FALATEA N substitution in			
03:40				24 MOTTA W substitution out
03:40				42 GUIMARAES M substitution in
03:40	12 GUSTIN L free throw 1 - 2 made (13)	<b>77-56</b>	<b>21</b>	
03:40	12 GUSTIN L free throw 2 - 2 made (14)	<b>78-56</b>	<b>22</b>	
03:19	2 GONZALES S foul personal (4 - 7)			1 CAVINDER H foul drawn (5)
03:19		<b>78-57</b>	<b>21</b>	1 CAVINDER H free throw 1 - 2 made (6)
03:19		<b>78-58</b>	<b>20</b>	1 CAVINDER H free throw 2 - 2 made (7)
03:00	10 GRAHAM T 2pt FG outside the paint, jump shot missed			
02:57	12 GUSTIN L offensive rebound (13)			
02:56	12 GUSTIN L 2pt FG second chance outside the paint, jump shot missed			
02:53	2 GONZALES S offensive rebound (5)			
02:47	12 GUSTIN L 2pt FG second chance in the paint, floating jump shot made (16)	<b>80-58</b>	<b>22</b>	
02:47	10 GRAHAM T assist (8)			
02:31	3 FALATEA N foul personal (1 - 8)			1 CAVINDER H foul drawn (6)
02:31	12 GUSTIN L substitution out			
02:31	22 HAMSON S substitution in			
02:31				13 BOOK A substitution out
02:31				42 GUIMARAES M substitution out
02:31				4 PETERSON J substitution in
02:31				14 STRICKLIN T substitution in
02:31		<b>80-59</b>	<b>21</b>	1 CAVINDER H free throw 1 - 2 made (8)
02:31		<b>80-60</b>	<b>20</b>	1 CAVINDER H free throw 2 - 2 made (9)



**Fresno St. at BYU**

11/13/21 Marriott Center, Provo  
2021-22 Women's Basketball

**Game Time:** 4:00 PM  
**Game Duration:** 1:51  
**Attendance:** 1,152

**Officials:** Infini Robinson, Shelley Nakasone, Kelly Broomfield

Game Time	BYU	Score	Diff	FSU
02:31	10 GRAHAM T substitution out			
02:31	13 HARDING P substitution out			
02:31	4 MACKEY-WILLIAMS A substitution in			
02:31	24 BUBAKAR R substitution in			
02:10	4 MACKEY-WILLIAMS A 2pt FG outside the paint, pull up jump shot missed			
02:07				defensive rebound (33)
01:37				4 PETERSON J 2pt FG outside the paint, hook shot missed
01:34	22 HAMSON S defensive rebound (4)			
01:25	Timeout 30 Sec			
01:25	2 GONZALES S substitution out			
01:25	25 CALVERT E substitution in			
01:12	3 FALATEA N 2pt FG outside the paint, floating jump shot missed			
01:07	3 FALATEA N offensive rebound (3)			
01:05	25 CALVERT E 3pt FG second chance, jump shot missed			
00:59				14 STRICKLIN T defensive rebound (1)
00:35	22 HAMSON S foul shooting (2 - 9)			4 PETERSON J foul drawn (1)
00:35		<b>80-61</b>	<b>19</b>	4 PETERSON J free throw 1 - 2 made (1)
00:35				4 PETERSON J free throw 2 - 2 missed
00:35	22 HAMSON S defensive rebound (5)			
00:22	22 HAMSON S 2pt FG in the paint, layup missed			
00:21				0 CAVINDER H defensive rebound (4)
00:21				Timeout 30 Sec
00:11		<b>80-64</b>	<b>16</b>	0 CAVINDER H 3pt FG , jump shot made (14)
00:11				1 CAVINDER H assist (10)
00:08	4 MACKEY-WILLIAMS A foul drawn (1)			14 STRICKLIN T foul personal (2 - 3)
00:04	3 FALATEA N foul drawn (1)			30 TODOROVA Y foul personal (1 - 4)
<b>END OF GAME</b>				
<b>BYU 80-64 FSU</b>				



**Fresno St. at BYU**

11/13/21 Marriott Center, Provo  
2021-22 Women's Basketball

Game Time: 4:00 PM  
Game Duration: 1:51  
Attendance: 1,152

Officials: Infini Robinson, Shelley Nakasone, Kelly Broomfield

**Fresno St. - 20**

NO.	Name	F	Min	FG			Rebounds			Fouls		TP	AS	TO	ST	Blocks		+/-
				M-A	M-A	M-A	OR	DR	TOT	PF	FD					BS	BA	
13	Amiee Book	F	07:29	0-0	0-0	0-0	0	1	1	0	0	0	0	1	0	0	0	-5
42	Maria Guimaraes	C	01:09	0-0	0-0	0-0	0	0	0	0	0	0	0	0	0	0	0	-2
0	Hanna Cavinder	G	10:00	1-3	1-1	2-2	0	1	1	0	2	5	0	0	0	0	0	1
1	Haley Cavinder	G	10:00	1-1	0-0	4-4	0	1	1	0	2	6	1	0	0	0	0	1
30	Yanina Todorova	G	06:54	0-0	0-0	0-0	0	0	0	1	0	0	0	0	0	0	0	2
5	Daylee Dunn		03:06	0-0	0-0	0-0	0	1	1	1	0	0	0	0	0	0	0	-1
21	Imani Lacy		03:06	0-1	0-0	2-2	0	1	1	0	2	2	0	0	0	0	1	0
24	Wytalla Motta		03:14	1-3	0-0	4-4	1	0	1	1	2	6	0	1	1	0	0	-3
4	Jessica Peterson		02:31	0-1	0-0	1-2	0	0	0	0	1	1	0	0	0	0	0	6
14	Tamia Stricklin		02:31	0-0	0-0	0-0	0	1	1	1	0	0	0	0	0	0	0	6
Team							0	1	1			0		0				
<b>Totals</b>				3-9	1-1	13-14	1	7	8	4	9	20	1	2	1	0	1	1

Shooting By Period		
4 <sup>th</sup> FG%	3-9	33.3%
3PT%	1-1	100.0%
FT%	13-14	92.9%
GM FG%	3-9	33.3%
3PT%	1-1	100.0%
FT%	13-14	92.9%

Dead Ball Rebounds: 0, 0

Technical Fouls::NONE

**BYU - 19**

NO.	Name	F	Min	FG			Rebounds			Fouls		TP	AS	TO	ST	Blocks		+/-
				M-A	M-A	M-A	OR	DR	TOT	PF	FD					BS	BA	
12	Lauren Gustin	F	04:23	2-3	0-0	2-2	1	1	2	1	1	6	0	0	0	0	0	5
2	Shaylee Gonzales	G	08:35	1-2	0-1	1-2	1	0	1	1	1	3	0	0	1	0	0	3
5	Maria Albiero	G	03:14	0-0	0-0	0-0	0	0	0	1	0	0	3	1	0	0	0	3
10	Tegan Graham	G	07:29	1-2	1-1	0-0	0	1	1	0	0	3	2	0	1	0	0	3
13	Paisley Harding	G	05:48	3-4	1-2	0-0	0	0	0	0	0	7	0	0	0	0	0	6
11	Kaylee Smiler		04:47	0-0	0-0	0-0	0	0	0	2	0	0	0	0	0	0	0	-3
3	Nani Falatea		03:40	0-1	0-0	0-0	1	0	1	1	1	0	0	0	0	0	0	-4
4	Arielle Mackey-Williams		02:31	0-1	0-0	0-0	0	0	0	0	1	0	0	0	0	0	0	-4
22	Sara Hamson		02:31	0-1	0-0	0-0	0	2	2	1	0	0	0	0	0	0	0	-6
24	Rose Bubakar		02:31	0-0	0-0	0-0	0	0	0	0	0	0	0	0	0	0	0	-4
25	Emma Calvert		04:31	0-3	0-1	0-0	0	1	1	2	0	0	0	0	0	1	0	-4
Team							0	1	1			0		0				
<b>Totals</b>				7-17	2-5	3-4	3	6	9	9	4	19	5	1	2	1	0	-1

Shooting By Period		
4 <sup>th</sup> FG%	7-17	41.2%
3PT%	2-5	40.0%
FT%	3-4	75%
GM FG%	7-17	41.2%
3PT%	2-5	40.0%
FT%	3-4	75.0%

Dead Ball Rebounds: 1, 0

Technical Fouls::NONE

	FSU	BYU
Biggest lead	0 (1 <sup>st</sup> 10:00)	22 (4 <sup>th</sup> 3:40)
Best Scoring Run	6(4 <sup>th</sup> 0:11)	8(4 <sup>th</sup> 3:40)
Lead Changes	0	
Times Tied	0	
Time with Lead	00:00	09:51

	FSU	BYU
Points from		
Turnovers	2	5
Paint	4	8
Second Chance	0	2
Fast Breaks	4	6
Bench	9	0

	Period by Period Scoring				
	1st	2nd	3rd	4th	TOT
FSU	16	13	15	20	64
BYU	19	18	24	19	80



**Fresno St. at BYU**

11/13/21 Marriott Center, Provo  
2021-22 Women's Basketball

Game Time: 4:00 PM  
Game Duration: 1:51  
Attendance: 1,152

Officials: Infini Robinson, Shelley Nakasone, Kelly Broomfield

**Fresno St. - 35**

NO.	Name	Min	FG			Rebounds			Fouls		TP	AS	TO	ST	Blocks		+/-
			M-A	M-A	M-A	OR	DR	TOT	PF	FD					BS	BA	
13	Amiee Book	F 14:09	2-4	1-3	0-0	0	2	2	0	1	5	0	1	0	0	0	-16
42	Maria Guimaraes	C 07:41	2-3	0-0	0-0	0	0	0	1	1	4	0	0	0	0	0	-4
0	Hanna Cavinder	G 20:00	3-7	1-1	3-4	0	2	2	0	3	10	1	3	0	0	1	-8
1	Haley Cavinder	G 20:00	1-2	0-1	4-4	0	3	3	1	4	6	4	1	0	0	0	-8
30	Yanina Todorova	G 11:54	0-0	0-0	0-0	0	1	1	1	0	0	0	0	0	0	0	-4
24	Wytalla Motta	05:02	1-3	0-0	5-6	1	0	1	1	3	7	0	1	1	0	0	-5
5	Daylee Dunn	08:06	0-1	0-1	0-0	0	1	1	1	0	0	0	0	1	0	0	-4
14	Tamia Stricklin	05:51	0-0	0-0	0-0	0	1	1	2	0	0	0	0	0	0	0	8
21	Imani Lacy	04:46	0-1	0-0	2-2	0	1	1	0	2	2	0	0	0	0	1	-5
4	Jessica Peterson	02:31	0-1	0-0	1-2	0	0	0	0	1	1	0	0	0	0	0	6
Team						1	2	3			0		0				
<b>Totals</b>			9-22	2-6	15-18	2	13	15	7	15	35	5	6	2	0	2	-8

Shooting By Period		
3 <sup>rd</sup> FG%	6-13	46.2%
3PT%	1-5	20.0%
FT%	2-4	50%
4 <sup>th</sup> FG%	3-9	33.3%
3PT%	1-1	100.0%
FT%	13-14	92.9%
GM FG%	9-22	40.9%
3PT%	2-6	33.3%
FT%	15-18	83.3%

Dead Ball Rebounds: 1, 0

Technical Fouls::NONE

**BYU - 43**

NO.	Name	Min	FG			Rebounds			Fouls		TP	AS	TO	ST	Blocks		+/-
			M-A	M-A	M-A	OR	DR	TOT	PF	FD					BS	BA	
12	Lauren Gustin	F 09:42	3-4	0-0	2-2	1	2	3	3	1	8	0	0	0	0	0	11
2	Shaylee Gonzales	G 15:05	3-8	0-2	2-3	2	1	3	2	2	8	2	0	1	1	0	14
5	Maria Albiero	G 12:39	1-2	0-0	0-0	0	1	1	2	1	2	6	2	0	0	0	11
10	Tegan Graham	G 17:29	2-4	2-3	0-0	0	2	2	1	1	6	4	0	3	0	0	12
13	Paisley Harding	G 14:05	6-8	4-6	0-0	0	0	0	1	0	16	0	1	1	0	0	9
11	Kaylee Smiler	10:35	1-1	1-1	0-0	0	1	1	2	0	3	0	0	0	0	0	2
22	Sara Hamson	06:37	0-1	0-0	0-0	0	3	3	1	0	0	0	1	0	0	0	-4
25	Emma Calvert	05:06	0-3	0-1	0-0	0	1	1	2	0	0	0	0	0	1	0	-3
3	Nani Falatea	03:40	0-1	0-0	0-0	1	0	1	1	1	0	0	0	0	0	0	-4
4	Arielle Mackey-Williams	02:31	0-1	0-0	0-0	0	0	0	0	1	0	0	0	0	0	0	-4
24	Rose Bubakar	02:31	0-0	0-0	0-0	0	0	0	0	0	0	0	0	0	0	0	-4
Team						0	2	2			0		0				
<b>Totals</b>			16-33	7-13	4-5	4	13	17	15	7	43	12	4	5	2	0	8

Shooting By Period		
3 <sup>rd</sup> FG%	9-16	56.3%
3PT%	5-8	62.5%
FT%	1-1	100%
4 <sup>th</sup> FG%	7-17	41.2%
3PT%	2-5	40.0%
FT%	3-4	75%
GM FG%	16-33	48.5%
3PT%	7-13	53.8%
FT%	4-5	80.0%

Dead Ball Rebounds: 1, 0

Technical Fouls::NONE

	FSU	BYU
Biggest lead	0 (1 <sup>st</sup> 10:00)	22 (4 <sup>th</sup> 3:40)
Best Scoring Run	6(3 <sup>rd</sup> 2:43)	8(3 <sup>rd</sup> 7:40)
Lead Changes	0	
Times Tied	0	
Time with Lead	00:00	19:44

	FSU	BYU
Points from		
Turnovers	4	10
Paint	12	16
Second Chance	1	2
Fast Breaks	6	8
Bench	10	3

Period by Period Scoring					
	1st	2nd	3rd	4th	TOT
FSU	16	13	15	20	64
BYU	19	18	24	19	80



**Fresno St. at BYU**

11/13/21 Marriott Center, Provo  
2021-22 Women's Basketball

**Game Time:** 4:00 PM  
**Game Duration:** 1:51  
**Attendance:** 1,152

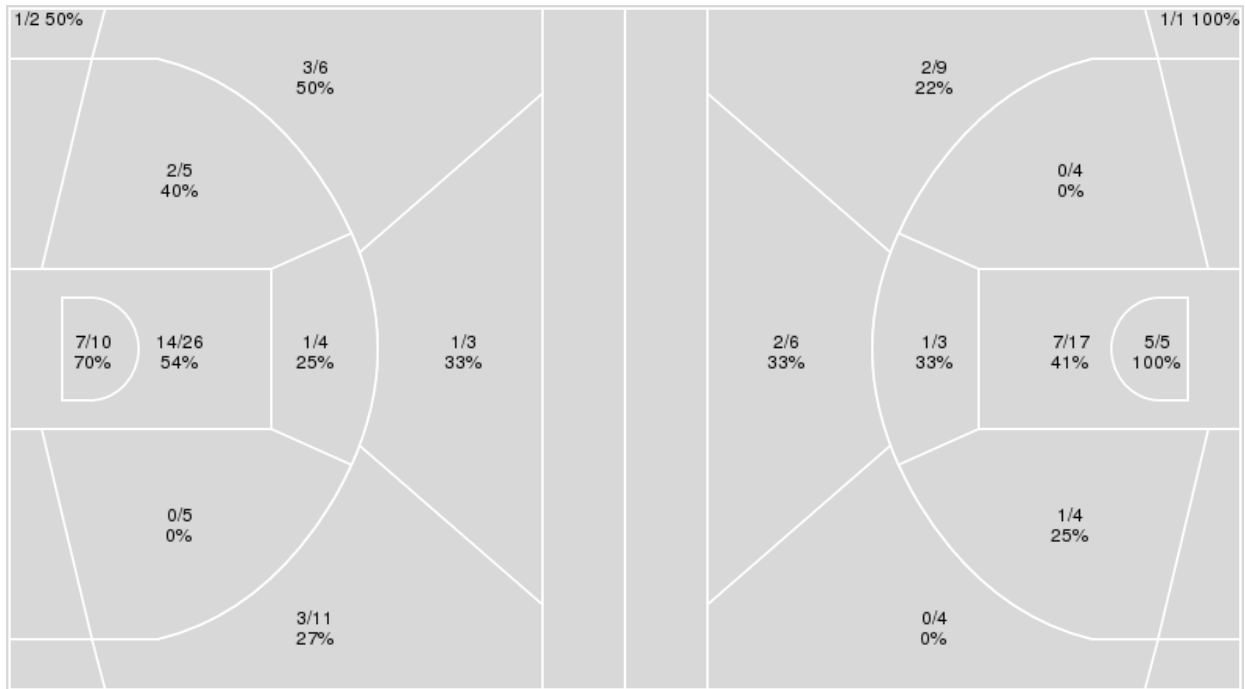
**Officials:** Infini Robinson, Shelley Nakasone, Kelly Broomfield

{ Players => 1, 2, 3, 4, 5, 10, 11, 12, 13, 20, 21, 22, 24, 25, 30, 32, 33, 34, 42; } FG Types => All; Results => All;

{ Players => 0, 1, 2, 3, 4, 5, 10, 12, 13, 14, 21, 23, 24, 30, 42; } FG Types => All; Results => All;

**BYU**

**Fresno St.**



BYU	M/A	%
Field Goals	32/72	44
2 Points	24/50	48
3 Points	8/22	36
Free Throws	8/9	89

Fresno St.	M/A	%
Field Goals	19/53	36
2 Points	14/33	42
3 Points	5/20	25
Free Throws	21/25	84



**Fresno St. at BYU**

11/13/21 Marriott Center, Provo  
2021-22 Women's Basketball

**Game Time:** 4:00 PM  
**Game Duration:** 1:51  
**Attendance:** 1,152

**Officials:** Infini Robinson, Shelley Nakasone, Kelly Broomfield

**Fresno St.**

No	Name	Mins		Score		Points Diff		Points per Min		Assists		Rebounds		Steals		Turnovers	
		On	Off	On	Off	On	Off	On	Off	On	Off	On	Off	On	Off	On	Off
0	Hanna Cavinder	39:25	00:35	64 - 78	0 - 2	-14	-2	1.62	0.00	13	0	35	0	3	0	13	0
1	Haley Cavinder	37:41	02:19	62 - 76	2 - 4	-14	-2	1.65	0.86	12	1	32	3	3	0	12	1
4	Jessica Peterson	03:38	36:22	6 - 2	58 - 78	4	-20	1.65	1.59	1	12	5	30	0	3	1	12
5	Daylee Dunn	13:45	26:15	18 - 27	46 - 53	-9	-7	1.31	1.75	2	11	11	24	1	2	4	9
13	Amiee Book	32:15	07:45	47 - 75	17 - 5	-28	12	1.46	2.19	11	2	27	8	2	1	12	1
14	Tamia Stricklin	10:39	29:21	19 - 11	45 - 69	8	-24	1.78	1.53	3	10	11	24	1	2	2	11
21	Imani Lacy	10:40	29:20	15 - 22	49 - 58	-7	-9	1.41	1.67	4	9	8	27	0	3	1	12
24	Wytalla Motta	12:56	27:04	24 - 34	40 - 46	-10	-6	1.86	1.48	3	10	10	25	2	1	7	6
30	Yanina Todorova	23:11	16:49	43 - 49	21 - 31	-6	-10	1.85	1.25	10	3	20	15	2	1	8	5
42	Maria Guimaraes	15:50	24:10	22 - 26	42 - 54	-4	-12	1.39	1.74	6	7	16	19	1	2	5	8

**BYU**

No	Name	Mins		Score		Points Diff		Points per Min		Assists		Rebounds		Steals		Turnovers	
		On	Off	On	Off	On	Off	On	Off	On	Off	On	Off	On	Off	On	Off
2	Shaylee Gonzales	32:55	07:05	68 - 48	12 - 16	20	-4	2.07	1.69	19	4	33	9	9	1	6	2
3	Nani Falatea	06:07	33:53	8 - 10	72 - 54	-2	18	1.31	2.12	2	21	10	32	0	10	0	8
4	Arielle Mackey-Williams	02:31	37:29	0 - 4	80 - 60	-4	20	0.00	2.13	0	23	3	39	0	10	0	8
5	Maria Albiero	28:41	11:19	66 - 43	14 - 21	23	-7	2.30	1.24	19	4	27	15	10	0	5	3
10	Tegan Graham	33:28	06:32	76 - 54	4 - 10	22	-6	2.27	0.61	22	1	31	11	9	1	6	2
11	Kaylee Smiler	17:46	22:14	38 - 36	42 - 28	2	14	2.14	1.89	10	13	17	25	4	6	7	1
12	Lauren Gustin	25:30	14:30	57 - 41	23 - 23	16	0	2.24	1.59	15	8	28	14	9	1	4	4
13	Paisley Harding	29:54	10:06	60 - 47	20 - 17	13	3	2.01	1.98	19	4	33	9	7	3	6	2
22	Sara Hamson	15:31	24:29	21 - 24	59 - 40	-3	19	1.35	2.41	7	16	20	22	2	8	6	2
24	Rose Bubakar	02:31	37:29	0 - 4	80 - 60	-4	20	0.00	2.13	0	23	3	39	0	10	0	8
25	Emma Calvert	05:06	34:54	6 - 9	74 - 55	-3	19	1.18	2.12	2	21	5	37	0	10	0	8



**Fresno St. at BYU**

11/13/21 Marriott Center, Provo  
2021-22 Women's Basketball

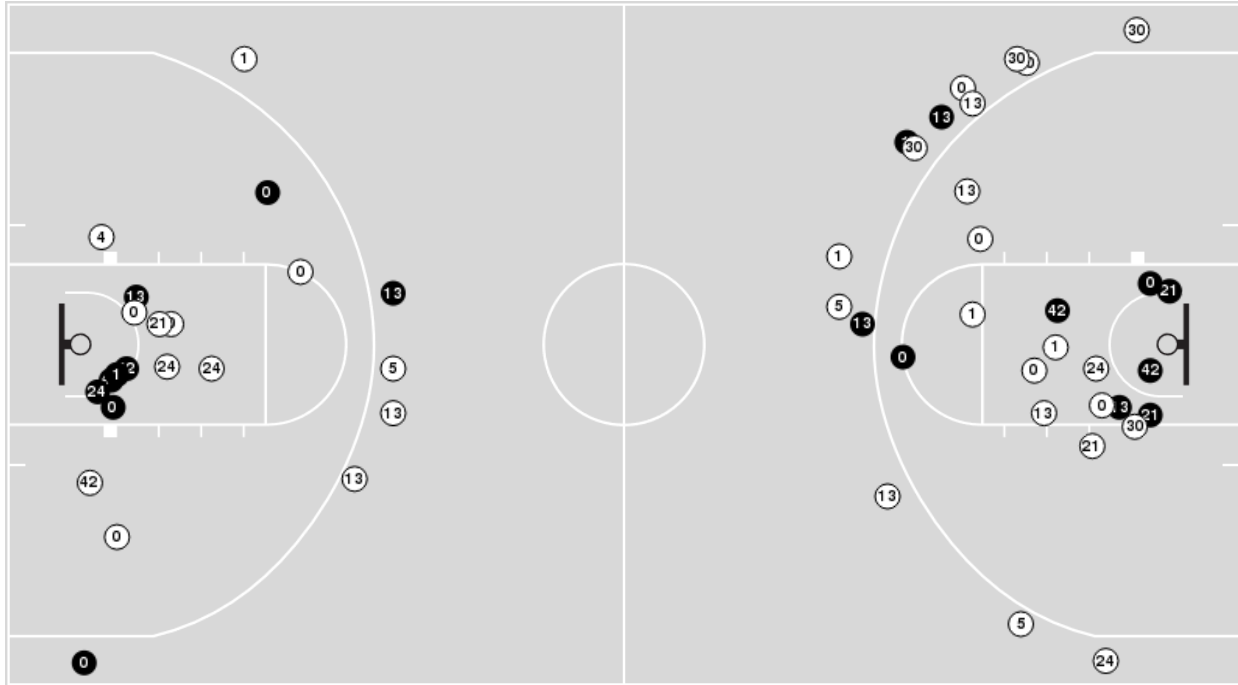
Game Time: 4:00 PM  
Game Duration: 1:51  
Attendance: 1,152

Officials: Infini Robinson, Shelley Nakasone, Kelly Broomfield

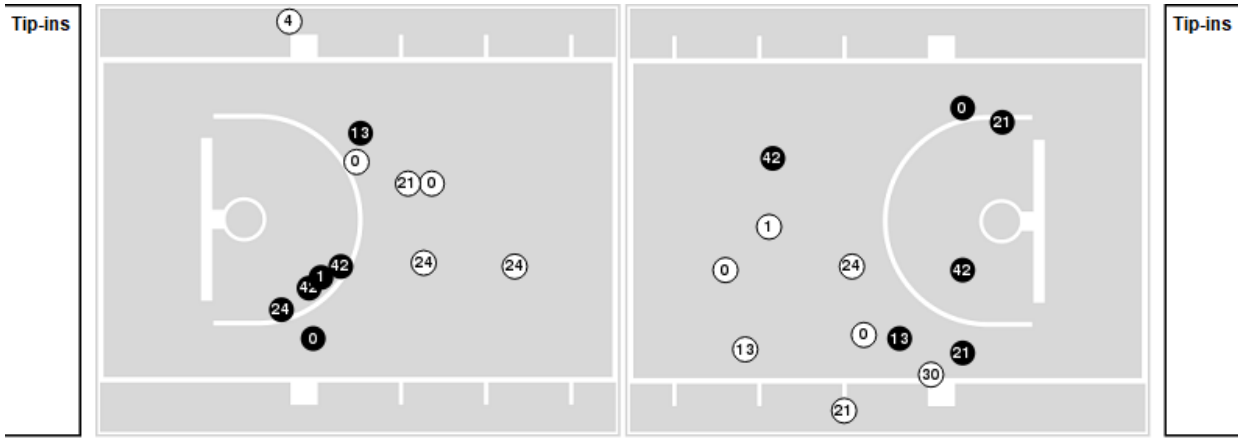
Players => 0, 1, 2, 3, 4, 5, 10, 12, 13, 14, 21, 23, 24, 30, 42 FG Types=>All Results=>All

**Fresno St.**

**All Field Goals**



**Blow Up Chart**



● Made ○ Missed N - Player Number

Fresno St.	M/A	%
Field Goals	19/53	36
2 Points	14/33	42
3 Points	5/20	25
Free Throws	21/25	84

Fresno St.	M/A	%
Points in the Paint	24 (12 / 22)	55
Fast Break Points	13 (8/8)	100
Second Chance Points	1 (1/6)	17
Effective FG%	41	



**Fresno St. at BYU**

11/13/21 Marriott Center, Provo  
2021-22 Women's Basketball

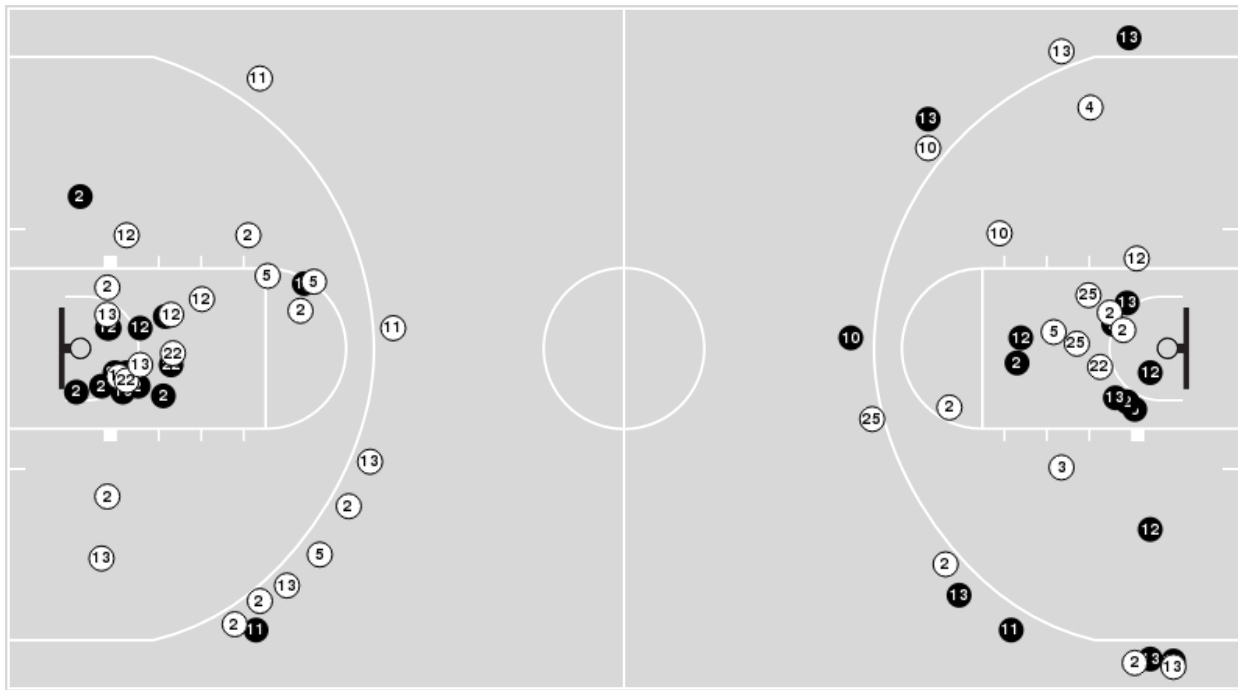
Game Time: 4:00 PM  
Game Duration: 1:51  
Attendance: 1,152

Officials: Infini Robinson, Shelley Nakasone, Kelly Broomfield

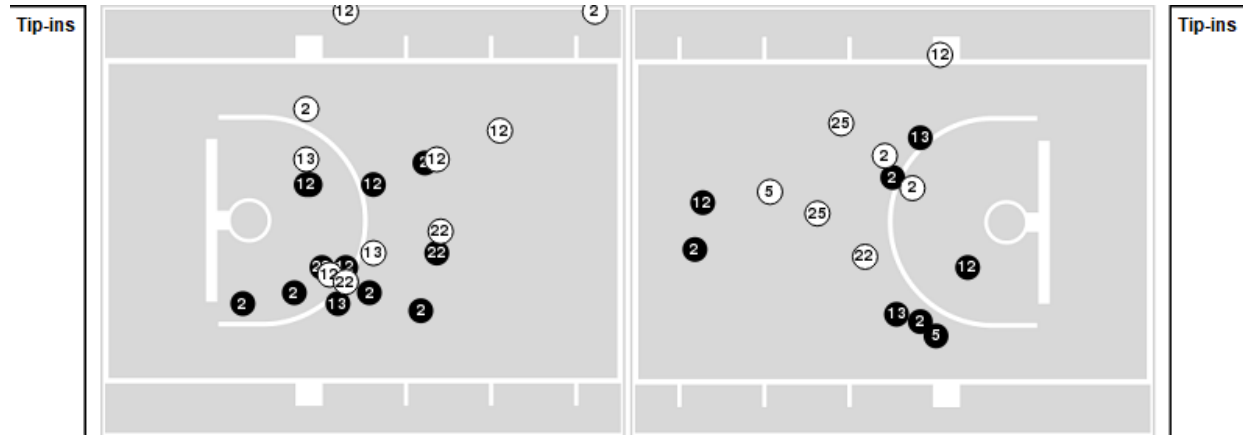
Players => 1, 2, 3, 4, 5, 10, 11, 12, 13, 20, 21, 22, 24, 25, 30, 32, 33, 34, 42FG Types=>AllResults=>All

**BYU**

**All Field Goals**



**Blow Up Chart**



● Made    ○ Missed    N - Player Number

BYU	M/A	%
Field Goals	32/72	44
2 Points	24/50	48
3 Points	8/22	36
Free Throws	8/9	89

BYU	M/A	%
Points in the Paint	42 (21 / 36)	58
Fast Break Points	16 (9/10)	90
Second Chance Points	6 (3/11)	27
Effective FG%	50	





**Fresno St. at BYU**

11/13/21 Marriott Center, Provo  
2021-22 Women's Basketball

**Game Time:** 4:00 PM  
**Game Duration:** 1:51  
**Attendance:** 1,152

**Officials:** Infini Robinson, Shelley Nakasone, Kelly Broomfield

**Fresno St.**

Lineup	Quarter On	Time On	Quarter Off	Time Off	Time on Court	Score	Score Diff	Reb	Stl	Tov	Ass	PPP
0- Cavinder H/ 1- Cavinder H/ 13- Book A/ 30- Todorova Y/ 42- Guimaraes M/	1	10:00	1	06:07	03:53	7-6	1	5	0	1	1	1.0000
0- Cavinder H/ 1- Cavinder H/ 5- Dunn D/ 13- Book A/ 24- Motta W/	1	06:07	1	04:08	01:59	0-7	-7	2	0	3	0	0.0000
0- Cavinder H/ 5- Dunn D/ 13- Book A/ 24- Motta W/ 30- Todorova Y/	1	04:08	1	04:08	00:00	0-0	0	0	0	0	0	0.0000
0- Cavinder H/ 1- Cavinder H/ 13- Book A/ 24- Motta W/ 30- Todorova Y/	1	04:08	1	02:24	01:44	3-4	-1	1	0	0	1	1.5000
0- Cavinder H/ 1- Cavinder H/ 13- Book A/ 21- Lacy I/ 30- Todorova Y/	1	02:24	1	02:16	00:08	3-0	3	0	0	0	1	2.0833
0- Cavinder H/ 1- Cavinder H/ 13- Book A/ 21- Lacy I/ 42- Guimaraes M/	1	02:16	1	00:19	01:57	3-2	1	2	0	0	1	1.5000
0- Cavinder H/ 1- Cavinder H/ 4- Peterson J/ 13- Book A/ 21- Lacy I/	1	00:19	2	09:36	00:43	0-2	-2	1	0	1	0	0.0000
0- Cavinder H/ 1- Cavinder H/ 4- Peterson J/ 13- Book A/ 24- Motta W/	2	09:36	2	09:12	00:24	0-0	0	1	0	0	0	0.0000
0- Cavinder H/ 1- Cavinder H/ 13- Book A/ 24- Motta W/ 30- Todorova Y/	2	09:12	2	07:54	01:18	3-2	1	0	1	0	1	1.0417
1- Cavinder H/ 13- Book A/ 14- Stricklin T/ 24- Motta W/ 30- Todorova Y/	2	07:54	2	07:19	00:35	0-2	-2	0	0	0	0	0.0000
0- Cavinder H/ 13- Book A/ 14- Stricklin T/ 30- Todorova Y/ 42- Guimaraes M/	2	07:19	2	05:00	02:19	2-4	-2	3	0	1	1	0.6667
0- Cavinder H/ 1- Cavinder H/ 13- Book A/ 21- Lacy I/ 30- Todorova Y/	2	05:00	2	03:40	01:20	2-4	-2	1	0	0	1	1.0000
0- Cavinder H/ 1- Cavinder H/ 5- Dunn D/ 13- Book A/ 21- Lacy I/	2	03:40	2	01:54	01:46	2-4	-2	0	0	0	1	0.6667
0- Cavinder H/ 1- Cavinder H/ 5- Dunn D/ 14- Stricklin T/ 24- Motta W/	2	01:54	3	10:00	01:54	4-0	4	4	0	1	0	0.8403
0- Cavinder H/ 1- Cavinder H/ 13- Book A/ 30- Todorova Y/ 42- Guimaraes M/	3	10:00	3	05:48	04:12	4-8	-4	5	0	3	2	0.5000
0- Cavinder H/ 1- Cavinder H/ 13- Book A/ 24- Motta W/ 30- Todorova Y/	3	05:48	3	05:00	00:48	3-5	-2	0	0	1	1	1.5000
0- Cavinder H/ 1- Cavinder H/ 5- Dunn D/ 14- Stricklin T/ 24- Motta W/	3	05:00	3	04:00	01:00	3-3	0	0	0	0	0	1.5957
0- Cavinder H/ 1- Cavinder H/ 5- Dunn D/ 14- Stricklin T/ 42- Guimaraes M/	3	04:00	3	01:40	02:20	4-2	2	1	1	0	1	1.0000
0- Cavinder H/ 1- Cavinder H/ 5- Dunn D/ 13- Book A/ 21- Lacy I/	3	01:40	4	06:54	04:46	5-10	-5	4	0	0	0	0.7396
0- Cavinder H/ 1- Cavinder H/ 5- Dunn D/ 13- Book A/ 24- Motta W/	4	06:54	4	06:54	00:00	0-1	-1	0	0	0	0	0.0000
0- Cavinder H/ 1- Cavinder H/ 13- Book A/ 24- Motta W/ 30- Todorova Y/	4	06:54	4	03:40	03:14	8-10	-2	2	1	2	0	1.2048
0- Cavinder H/ 1- Cavinder H/ 13- Book A/ 30- Todorova Y/ 42- Guimaraes M/	4	03:40	4	02:31	01:09	2-4	-2	0	0	0	0	2.2727
0- Cavinder H/ 1- Cavinder H/ 4- Peterson J/ 14- Stricklin T/ 30- Todorova Y/	4	02:31	4	00:00	02:31	6-0	6	3	0	0	1	1.5957



**Fresno St. at BYU**

11/13/21 Marriott Center, Provo  
2021-22 Women's Basketball

**Game Time:** 4:00 PM  
**Game Duration:** 1:51  
**Attendance:** 1,152

**Officials:** Infini Robinson, Shelley Nakasone, Kelly Broomfield

**BYU**

Lineup	Quarter On	Time On	Quarter Off	Time Off	Time on Court	Score	Score Diff	Reb	Stl	Tov	Ass	PPP
2- Gonzales S/ 5- Albiero M/ 10- Graham T/ 12- Gustin L/ 13- Harding P/	1	10:00	1	05:10	04:50	8-7	1	5	2	0	2	0.9009
2- Gonzales S/ 5- Albiero M/ 10- Graham T/ 11- Smiler K/ 12- Gustin L/	1	05:10	1	02:24	02:46	9-3	6	2	1	0	2	1.8000
2- Gonzales S/ 10- Graham T/ 11- Smiler K/ 12- Gustin L/ 13- Harding P/	1	02:24	1	02:16	00:08	0-2	-2	0	0	0	0	0.0000
2- Gonzales S/ 11- Smiler K/ 12- Gustin L/ 13- Harding P/ 22- Hamson S/	1	02:16	2	09:12	03:04	4-4	0	6	0	2	1	0.6803
2- Gonzales S/ 5- Albiero M/ 10- Graham T/ 13- Harding P/ 22- Hamson S/	2	09:12	2	05:00	04:12	8-5	3	4	1	1	4	1.3333
2- Gonzales S/ 5- Albiero M/ 10- Graham T/ 12- Gustin L/ 13- Harding P/	2	05:00	2	03:40	01:20	4-2	2	1	0	0	1	1.3333
3- Falatea N/ 5- Albiero M/ 10- Graham T/ 12- Gustin L/ 13- Harding P/	2	03:40	2	01:54	01:46	4-2	2	4	0	0	1	2.0000
3- Falatea N/ 5- Albiero M/ 10- Graham T/ 12- Gustin L/ 22- Hamson S/	2	01:54	2	01:43	00:11	0-0	0	0	0	0	0	0.0000
2- Gonzales S/ 3- Falatea N/ 10- Graham T/ 12- Gustin L/ 22- Hamson S/	2	01:43	2	01:13	00:30	0-0	0	1	0	0	0	0.0000
2- Gonzales S/ 5- Albiero M/ 11- Smiler K/ 12- Gustin L/ 22- Hamson S/	2	01:13	2	00:28	00:44	0-2	-2	1	1	0	0	0.0000
2- Gonzales S/ 10- Graham T/ 11- Smiler K/ 12- Gustin L/ 13- Harding P/	2	00:28	2	00:13	00:16	0-2	-2	0	0	1	0	0.0000
5- Albiero M/ 11- Smiler K/ 12- Gustin L/ 13- Harding P/ 22- Hamson S/	2	00:13	3	10:00	00:13	0-0	0	1	0	0	0	0.0000
2- Gonzales S/ 5- Albiero M/ 10- Graham T/ 12- Gustin L/ 13- Harding P/	3	10:00	3	05:48	04:12	8-4	4	4	2	0	2	1.0000
5- Albiero M/ 10- Graham T/ 11- Smiler K/ 12- Gustin L/ 13- Harding P/	3	05:48	3	04:41	01:07	5-3	2	0	1	0	2	2.5000
5- Albiero M/ 10- Graham T/ 11- Smiler K/ 13- Harding P/ 22- Hamson S/	3	04:41	3	02:23	02:18	3-7	-4	2	0	2	1	0.7500
2- Gonzales S/ 5- Albiero M/ 10- Graham T/ 11- Smiler K/ 22- Hamson S/	3	02:23	3	00:40	01:43	6-0	6	2	0	1	1	1.7442
5- Albiero M/ 10- Graham T/ 11- Smiler K/ 13- Harding P/ 22- Hamson S/	3	00:40	3	00:34	00:05	0-0	0	0	0	0	0	0.0000
2- Gonzales S/ 10- Graham T/ 11- Smiler K/ 13- Harding P/ 25- Calvert E/	3	00:34	4	06:54	03:41	6-5	1	3	0	0	2	1.0000
2- Gonzales S/ 5- Albiero M/ 10- Graham T/ 11- Smiler K/ 12- Gustin L/	4	06:54	4	05:13	01:41	5-8	-3	0	1	1	1	1.0246
2- Gonzales S/ 5- Albiero M/ 10- Graham T/ 12- Gustin L/ 13- Harding P/	4	05:13	4	03:40	01:33	6-0	6	1	1	0	2	3.0000
2- Gonzales S/ 3- Falatea N/ 10- Graham T/ 12- Gustin L/ 13- Harding P/	4	03:40	4	02:31	01:09	4-2	2	2	0	0	1	2.1277
2- Gonzales S/ 3- Falatea N/ 10- Graham T/ 13- Harding P/ 22- Hamson S/	4	02:31	4	02:31	00:00	0-2	-2	0	0	0	0	0.0000
2- Gonzales S/ 3- Falatea N/ 4- Mackey-Williams A/ 22- Hamson S/ 24- Bubakar R/	4	02:31	4	01:25	01:06	0-0	0	1	0	0	0	0.0000
3- Falatea N/ 4- Mackey-Williams A/ 22- Hamson S/ 24- Bubakar R/ 25- Calvert E/	4	01:25	4	00:00	01:25	0-4	-4	2	0	0	0	0.0000



**Fresno St. at BYU**

11/13/21 Marriott Center, Provo  
2021-22 Women's Basketball

**Game Time:** 4:00 PM  
**Game Duration:** 1:51  
**Attendance:** 1,152

**Officials:** Infini Robinson, Shelley Nakasone, Kelly Broomfield

**Fresno St.**

Lineup	Time	Score	Score Diff	Pts/Min	Reb	Stl	Tov	Ass	PPP
0- Cavinder H/ 1- Cavinder H/ 13- Book A/ 30- Todorova Y/ 42- Guimaraes M/	09:14	13-18	-5	1.4079	10	0	4	3	0.8186
0- Cavinder H/ 1- Cavinder H/ 13- Book A/ 24- Motta W/ 30- Todorova Y/	07:04	17-21	-4	2.4057	3	2	3	3	1.2574
0- Cavinder H/ 1- Cavinder H/ 5- Dunn D/ 13- Book A/ 21- Lacy I/	06:32	7-14	-7	1.0714	4	0	0	1	0.7172
0- Cavinder H/ 1- Cavinder H/ 5- Dunn D/ 14- Stricklin T/ 24- Motta W/	02:54	7-3	4	2.4138	4	0	1	0	1.0542
0- Cavinder H/ 1- Cavinder H/ 4- Peterson J/ 14- Stricklin T/ 30- Todorova Y/	02:31	6-0	6	2.3841	3	0	0	1	1.5957
0- Cavinder H/ 1- Cavinder H/ 5- Dunn D/ 14- Stricklin T/ 42- Guimaraes M/	02:20	4-2	2	1.7143	1	1	0	1	1.0000
0- Cavinder H/ 13- Book A/ 14- Stricklin T/ 30- Todorova Y/ 42- Guimaraes M/	02:19	2-4	-2	0.8633	3	0	1	1	0.6667
0- Cavinder H/ 1- Cavinder H/ 5- Dunn D/ 13- Book A/ 24- Motta W/	01:59	0-8	-8	0.0000	2	0	3	0	0.0000
0- Cavinder H/ 1- Cavinder H/ 13- Book A/ 21- Lacy I/ 42- Guimaraes M/	01:57	3-2	1	1.5385	2	0	0	1	1.5000
0- Cavinder H/ 1- Cavinder H/ 13- Book A/ 21- Lacy I/ 30- Todorova Y/	01:28	5-4	1	3.4091	1	0	0	2	1.4535
0- Cavinder H/ 1- Cavinder H/ 4- Peterson J/ 13- Book A/ 21- Lacy I/	00:43	0-2	-2	0.0000	1	0	1	0	0.0000
1- Cavinder H/ 13- Book A/ 14- Stricklin T/ 24- Motta W/ 30- Todorova Y/	00:35	0-2	-2	0.0000	0	0	0	0	0.0000
0- Cavinder H/ 1- Cavinder H/ 4- Peterson J/ 13- Book A/ 24- Motta W/	00:24	0-0	0	0.0000	1	0	0	0	0.0000
0- Cavinder H/ 5- Dunn D/ 13- Book A/ 24- Motta W/ 30- Todorova Y/	00:00	0-0	0	NaN	0	0	0	0	0.0000



**Fresno St. at BYU**

11/13/21 Marriott Center, Provo  
2021-22 Women's Basketball

**Game Time:** 4:00 PM  
**Game Duration:** 1:51  
**Attendance:** 1,152

**Officials:** Infini Robinson, Shelley Nakasone, Kelly Broomfield

**BYU**

Lineup	Time	Score	Score Diff	Pts/Min	Reb	Stl	Tov	Ass	PPP
2- Gonzales S/ 5- Albiero M/ 10- Graham T/ 12- Gustin L/ 13- Harding P/	11:55	26-13	13	2.1818	11	5	0	7	1.1883
2- Gonzales S/ 5- Albiero M/ 10- Graham T/ 11- Smiler K/ 12- Gustin L/	04:27	14-11	3	3.1461	2	2	1	3	1.4170
2- Gonzales S/ 5- Albiero M/ 10- Graham T/ 13- Harding P/ 22- Hamson S/	04:12	8-5	3	1.9048	4	1	1	4	1.3333
2- Gonzales S/ 10- Graham T/ 11- Smiler K/ 13- Harding P/ 25- Calvert E/	03:41	6-5	1	1.6290	3	0	0	2	1.0000
2- Gonzales S/ 11- Smiler K/ 12- Gustin L/ 13- Harding P/ 22- Hamson S/	03:04	4-4	0	1.3043	6	0	2	1	0.6803
5- Albiero M/ 10- Graham T/ 11- Smiler K/ 13- Harding P/ 22- Hamson S/	02:23	3-7	-4	1.2587	2	0	2	1	0.7500
3- Falatea N/ 5- Albiero M/ 10- Graham T/ 12- Gustin L/ 13- Harding P/	01:46	4-2	2	2.2642	4	0	0	1	2.0000
2- Gonzales S/ 5- Albiero M/ 10- Graham T/ 11- Smiler K/ 22- Hamson S/	01:43	6-0	6	3.4951	2	0	1	1	1.7442
3- Falatea N/ 4- Mackey-Williams A/ 22- Hamson S/ 24- Bubakar R/ 25- Calvert E/	01:25	0-4	-4	0.0000	2	0	0	0	0.0000
2- Gonzales S/ 3- Falatea N/ 10- Graham T/ 12- Gustin L/ 13- Harding P/	01:09	4-2	2	3.4783	2	0	0	1	2.1277
5- Albiero M/ 10- Graham T/ 11- Smiler K/ 12- Gustin L/ 13- Harding P/	01:07	5-3	2	4.4776	0	1	0	2	2.5000
2- Gonzales S/ 3- Falatea N/ 4- Mackey-Williams A/ 22- Hamson S/ 24- Bubakar R/	01:06	0-0	0	0.0000	1	0	0	0	0.0000
2- Gonzales S/ 5- Albiero M/ 11- Smiler K/ 12- Gustin L/ 22- Hamson S/	00:44	0-2	-2	0.0000	1	1	0	0	0.0000
2- Gonzales S/ 3- Falatea N/ 10- Graham T/ 12- Gustin L/ 22- Hamson S/	00:30	0-0	0	0.0000	1	0	0	0	0.0000
2- Gonzales S/ 10- Graham T/ 11- Smiler K/ 12- Gustin L/ 13- Harding P/	00:24	0-4	-4	0.0000	0	0	1	0	0.0000
5- Albiero M/ 11- Smiler K/ 12- Gustin L/ 13- Harding P/ 22- Hamson S/	00:13	0-0	0	0.0000	1	0	0	0	0.0000
3- Falatea N/ 5- Albiero M/ 10- Graham T/ 12- Gustin L/ 22- Hamson S/	00:11	0-0	0	0.0000	0	0	0	0	0.0000
2- Gonzales S/ 3- Falatea N/ 10- Graham T/ 13- Harding P/ 22- Hamson S/	00:00	0-2	-2	NaN	0	0	0	0	0.0000