



# BYU Women's Volleyball

## Week 11: Loyola Marymount

### 2011 QUICK FACTS

#### UNIVERSITY INFORMATION

Location	Provo, Utah 84602
Elevation	4,553 feet
Enrollment	33,278 (Daytime)
Founded	October 15, 1875
Owned:	The Church of Jesus Christ of Latter-day Saints
Nickname	Cougars
Mascot	Cosmo
Colors	Dark blue and white
Conference	West Coast Conference
Arena	Smith Fieldhouse (5,000) wood floor
BYU President	Cecil O. Samuelson (Utah, 1970)
Athletics Director	Tom Holmoe (BYU, 1983)

#### VOLLEYBALL INFORMATION

Head Coach	Shawn Olmstead (BYU, 2005)
Office Phone	801-422-2808
Assistant Coaches	Heather Olmstead (Utah State, 2002)
	Emillie Toone (Utah, 2009)
Olmstead Record at BYU:	18-7
Olmstead Career Record	Same
BYU's All-Time Record:	1,078-331-5 (.764)
2010 Record	14-16
2010 MWC Record	9-7 (4th)
2010 NCAA	None
2010 Final Ranking	No. 86
Starters Returning/Lost	4/3
Letterwinners Returning/Lost	8/4
Other Players Returning/Lost	4/2
Newcomers	6

#### ATHLETIC COMMUNICATIONS

Primary Volleyball Contact	Rachel Hawks
Phone	801-422-8999
Cell	801-380-9668
E-mail	wvolleyball_sid@byu.edu
Secondary Volleyball Contact	Kyle Chilton
Phone	801-422-4909
E-mail	kyle_chilton@byu.edu
Homepage	www.byucougars.com
Pressrow Phone	520-227-7720
Mailing Address	BYU Athletic Communications 30 Smith Fieldhouse Provo, Utah 84602

### QUICK REFERENCE

BYU 2011 Record: 18-7

BYU WCC Record: 7-4

### 2011 BYU WOMEN'S VOLLEYBALL SCHEDULE

Date	Opponent	Site	Time/Result
Aug. 23	Blue and White Match	PROVO, UT	5 p.m.
Aug. 26-27	BYU Nike Invitational	PROVO, UT	
Aug. 26	No. 8 Illinois		L, 3-0
Aug. 27	UC Santa Barbara		W, 3-1
Aug. 27	Saint Mary's		L, 3-0
Aug. 30	Weber State	PROVO, UT	W, 3-0
Sept. 2-3	Kansas State Tournament	Manhattan, KS	
Sept. 2	Idaho		W, 3-0
Sept. 2	Georgia Southern		W, 3-1
Sept. 3	Kansas State		W, 3-0
Sept. 7	BYU-Hawaii	PROVO, UT	W, 3-0
Sept. 9-10	Utah Invitational	Salt Lake City, UT	
Sept. 9	UC Riverside		W, 3-0
Sept. 10	Eastern Michigan		W, 3-1
Sept. 10	Utah		W, 3-0
Sept. 13	Utah State	Logan, UT	W, 3-0
Sept. 16	Cal State Fullerton	Fullerton, CA	L, 3-1
Sept. 17	Cal State Northridge	Northridge, CA	W, 3-1
Sept. 22	Saint Mary's*	PROVO, UT	W, 3-0
Sept. 29	Loyola Marymount*	Los Angeles, CA	W, 3-2
Oct. 1	San Diego*	San Diego, CA	L, 3-0
Oct. 6	Santa Clara*	PROVO, UT	W, 3-0
Oct. 8	Pepperdine*	Malibu, CA	L, 3-1
Oct. 15	Portland*	Portland, OR	W, 3-1
Oct. 17	Gonzaga*	Spokane, WA	W, 3-1
Oct. 20	Pepperdine*	PROVO, UT	L, 3-1
Oct. 22	San Diego*-Dig Pink Match	PROVO, UT	L, 3-1
Oct. 27	San Francisco*	San Francisco, CA	W, 3-1
Oct. 29	Santa Clara*	Santa Clara, CA	W, 3-0
Nov. 3	Loyola Marymount*	PROVO, UT	7 p.m.
Nov. 5	San Francisco*	PROVO, UT	7 p.m.
Nov. 10	Saint Mary's*	Moraga, CA	7 p.m.
Nov. 17	Gonzaga*	PROVO, UT	7 p.m.
Nov. 19	Portland*	PROVO, UT	7 p.m.

\* denotes West Coast Conference matches.

\*\* all times listed are local to site and subject to change.

## 2011 NUMERICAL ROSTER

No.	Name	Pos.	Ht.	Cl.	Exp.	Hometown (Previous School)
1	Katie Vaughn	OH	6-2	FR	HS	El Dorado Hills, Calif. (Oak Ridge HS)
2	Heather Hannemann	S	5-8	JR	HS	Alpine, Utah (Lone Peak HS)
4	Kathryn LeCheminant	MB	6-2	SO	RS	Layton, Utah (Layton HS)
5	Mariah Katoa	MB	6-0	FR	HS	Layton, Utah (Layton HS)
6	Kendalyn Hartsock	L	5-6	JR	HS	Kalispell, Mont. (Flathead HS)
7	Hannah Robison	OH	6-0	FR	HS	Orem, Utah (Orem HS)
10	Camilla Phillips	OH/RS	5-11	SR	TR	South Jordan, Utah (Salt Lake CC)
11	Coriann Clark	DS/L	5-10	SO	HS	Bozeman, Mont. (Bozeman HS)
12	Jessica Jardine	OH	6-1	SO	HS	Cedar Hills, Utah (American Fork HS)
13	Kimberly Dahl	OH	6-0	FR	HS	Pleasant Grove, Utah (Pleasant Grove HS)
14	Christie Carpenter	OH	6-1	SR	1L	Cedar Hills, Utah (Lone Peak HS)
15	Nicole Warner	MB	6-2	JR	RS	Rigby, Idaho (Rigby HS)
17	Tia Withers	DS/L	5-9	FR	HS	Beaverton, Ore. (Sunset HS)
18	Kemi Bonner	S	6-1	SO	TR	Pleasant Grove, Utah (SLCC)
19	Jennifer Hamson	RS	6-6	SO	HS	Lindon, Utah (Pleasant Grove HS)
20	Casey Thurston	OH	6-1	SR	1L	West Valley City, Utah (Granger HS)
21	Taeja Afalava Toleafoa	DS/OH	5-11	SO	HS	South Jordan, Utah (Bingham HS)
22	Kimberli Boswell	MB/RS	6-2	SO	HS	Aloha, Ore. (Aloha HS)

Head Coach: Shawn Olmstead (BYU 2005) – First Season

Assistant Coaches: Heather Olmstead, Emillie Toone

Trainer: Dan Graham

Director of Volleyball Operations: Giuseppe Vinci

## 2011 ALPHABETICAL ROSTER

Name	No.	Pos.
Kimberli Boswell	22	MB/RS
Christie Carpenter	14	OH
Coriann Clark	11	DS/L
Kimberly Dahl	13	OH
Jennifer Hamson	19	RS
Heather Hannemann	2	S
Kendalyn Hartsock	6	L
Jessica Jardine	12	OH
Mariah Katoa	5	MB
Kathryn LeCheminant	4	MB
Kemi Bonner	18	S
Camilla Phillips	10	OH/RS
Hannah Robison	7	OH
Casey Thurston	20	OH
Taeja Afalava Toleafoa	21	DS/OH
Katie Vaughn	1	OH
Nicole Warner	15	MB
Tia Withers	17	DS/L

## ROSTER BREAKDOWN

### Returning Starters (4)

Name	Pos.	Ht.	Cl.	Pct.	KPG	DPG	BPG
Christie Carpenter	OH	6-1	SR	.126	2.61	1.95	.560
Jennifer Hamson	RS	6-6	SO	.261	2.76	.830	.830
Kendalyn Hartsock	L	5-6	JR	-.100	.020	3.61	.420*
Nicole Warner	MB	6-2	JR	.225	1.67	.610	1.32

\* Assists per game

### Starters Lost (3)

Name	Pos.	Ht.	Cl.	Pct.	KPG	DPG	BPG
Christina Measom	RS	6-0	SR	.185	2.30	.430	.580
Kiana Rogers	S	5-11	SR	.203	9.80*	2.62	.550
Stephanie Snow	MB/OH	6-4	SR	.352	2.63	.460	.750

\* Assists per game

### Returning Letterwinners (8)

Name	Pos.	Ht.	Cl.	Pct.	KPG	DPG	BPG
Christie Carpenter	OH	6-1	SR	.126	2.61	1.95	.560
Coriann Clark	OH/DS	5-9	SO	-.015	.09	1.33	.000
Jennifer Hamson	RS	6-6	SO	.261	2.76	.830	.830
Kendalyn Hartsock	L	5-6	JR	-.100	.020	3.61	.420*
Jessica Jardine	OH	6-1	SO	.014	1.32	.790	.110
Kathryn LeCheminant	MB	6-2	SO	.221	1.18	.210	.820
Taeja Afalava Toleafoa	OH/DS	5-11	SO	.068	.980	1.17	.150
Nicole Warner	MB	6-2	JR	.225	1.67	.610	1.32

\* Assists per game

### Letterwinners Lost (4)

Name	Pos.	Ht.	Cl.	Pct.	KPG	DPG	BPG
Christina Measom	RS	6-0	SR	.185	2.30	.430	.580
Kiana Rogers	S	5-11	SR	.203	9.80*	2.62	.550
Stephanie Snow	MB/OH	6-4	SR	.352	2.63	.460	.750
Brooke Soon	S	5-11	JR	.250	.020	1.97	.390*

\* Assists per game

### Others Returning (4)

Name	Pos.	Ht.	Cl.	Pct.	KPG	DPG	BPG
Kimberli Boswell	MB/RS	6-2	SO	.129	.830	.170	.670
Heather Hannemann	S	5-8	JR	.308	.310	1.06	.250
Camilla Phillips	RS	5-11	SR				
Casey Thurston	OH	6-1	SR				

\* Assists per game

### Others Lost (2)

Name	Pos.	Ht.	Cl.	Pct.	KPG	DPG	BPG
Courtney Honka	L/DS	5-8	JR	.000	.000	1.25	.000
Lauren Sagers	RS	6-0	JR				

### Newcomers (6)

Name	Pos.	Ht.	Cl.
Kimberly Dahl	OH	6-0	FR
Mariah Katoa	MB	6-0	FR
Kemi Bonner	S	6-1	SO
Hannah Robison	OH	6-0	FR
Katie Vaughn	OH	6-2	FR
Tia Withers	DS/L	5-9	FR

## Geographic Breakdown

### CALIFORNIA (1)

Katie Vaughn

### IDAHO (1)

Nicole Warner

### MONTANA (2)

Coriann Clark  
Kendalyn Hartsock

### OREGON (2)

Kimberli Boswell  
Tia Withers

### UTAH (12)

Taeja Afalava Toleafoa  
Christie Carpenter  
Kimberly Dahl  
Jennifer Hamson  
Heather Hannemann  
Jessica Jardine  
Mariah Katoa  
Kathryn LeCheminant  
Kemi Bonner  
Camilla Phillips  
Hannah Robison  
Casey Thurston

### Volleyball Welcomes LMU, USF to Fieldhouse

PROVO, Utah—Returning to the Smith Fieldhouse after securing the No. 3 position in the West Coast Conference, the BYU women's volleyball team is set to take on Loyola Marymount Thursday and San Francisco Saturday.

"This is an exciting week for BYU Volleyball," BYU head coach Shawn Olmstead said. "Both LMU and San Francisco are quality opponents and we hope to follow up a great road trip with a strong home stand."

The Cougars (18-7, 7-4) come off back-to-back wins against USF (13-11, 5-6) and Santa Clara. BYU defeated SCU 3-1 when the teams met in Santa Clara, Calif. and shutdown USF 3-1 in San Francisco.

The last time BYU faced LMU (13-11, 6-5), the Cougars came away with a 3-2 win in their only five-set match of the season.

Jennifer Hamson and Nicole Warner continue to dominate the WCC statistics list, Hamson leading in kills with 4.00 kills per set and Warner leading in blocks with 1.49 blocks per set. Senior Christie Carpenter takes second on the team with 2.87 kills per set and Kathryn LeCheminant helps out at the net with 1.16 blocks per set. LeCheminant passed 100 season blocks in the match against Santa Clara and currently totals 102.

Libero Kendalyn Hartsock set a career high of 31 digs against USF, which also broke the team's season high of 25 digs in a match. Hartsock has 4.36 digs per set. Freshman defensive specialist Tia Withers helps out with 2.10 digs per set and set her own career record with 17 digs against USF.

LMU ranks just behind the Cougars at No. 4 in the WCC after wins against Gonzaga and Portland last week. Betsi Metter leads the league in digs with 4.80 per set.

USF boasts a win against nationally ranked San Diego in the first round of WCC play, but currently resides at the No. 6 position in the conference. The Dons are on a five-match losing streak that began with a loss to Pepperdine Oct. 15.

Vendula Strakova leads the Dons' offense with 3.33 per set and is aided by Valentina Zaloznik's 2.61 kills per set. Rebecca Kopilovitch earns 4.35 digs per set.

The matches will both be televised on BYUtv and simulcast on BYU radio. For links to online streaming and live stats, click [HERE](#). Both matches begin at 7 p.m.

Thursday is 3-for-3 Night. If fans mention the offer at the ticket office, they will receive admission for \$1, a small popcorn for \$1 and a small flavor pop for \$1. Saturday is this season's Y. Game, where members of other BYU teams will come out to support the volleyball team. Admission is \$1 for those who bring a can of food to the match.



## 2011 Season Outlook

With five new recruits and a new head coach, the BYU women's volleyball team sets out to make its mark on a new conference in the 2011 season. Led by senior Christie Carpenter and junior Nicole Warner, the Cougars enter the new season ready to play with veteran experience and fresh talent.

"We're excited about the season," head coach Shawn Olmstead said. "The girls responded well during our double days in fall camp and we're eager to get out and start competing. They're effort during camp was great, so we're pleased and anxious to start this season."

Heading into the West Coast Conference, BYU is undefeated in its series' against four of the eight new conference foes, has a winning record against one and is tied with two. Four of this season's WCC members finished in the top 100 teams of 2010.

"This season we have good depth that we haven't had in the past, which gives us more options" Olmstead said. "We have returning experience at key positions and we anticipate those girls to excel and lead this group. The experience is a huge plus going forward and experience in matches is crucial."

BYU Athletics' new partnership with BYUtv will allow 12 of the 14 home matches to be aired on BYUtv.

### Breakdown by Position:

#### Middle Blocker

In 2010, junior starter Nicole Warner ranked third in the Mountain West Conference for blocks and No. 40 in the nation with 1.32 per game and 162 total. Warner also contributed 205 kills and 503 attacks.

"With two years of experience already, Nicole is a great blocker," Olmstead said. "She has good ability to move side-to-side and she's be-

## 2011 BYU Women's Volleyball

coming more and more skilled at the other positions crucial to hers."

Kathryn LeCheminant contributed 33 kills and 23 blocks in her first year playing for the Cougars. Fellow sophomore Jessica Jardine totaled 37 kills, 142 attacks and 22 digs in her rookie season.

Kimberli Boswell rounds off the list of returning middle blockers after in seven matches last season.

The Cougars are adding freshman Mariah Katoa, who qualified for the Junior Olympics and took Layton High School to a region championship in 2008.

#### Outside Hitter

Senior outside hitter Christie Carpenter placed second on the team with 313 season kills and led the team with 1,074 attacks in 2010. Carpenter recorded 234 digs for the Cougars and 67 blocks.

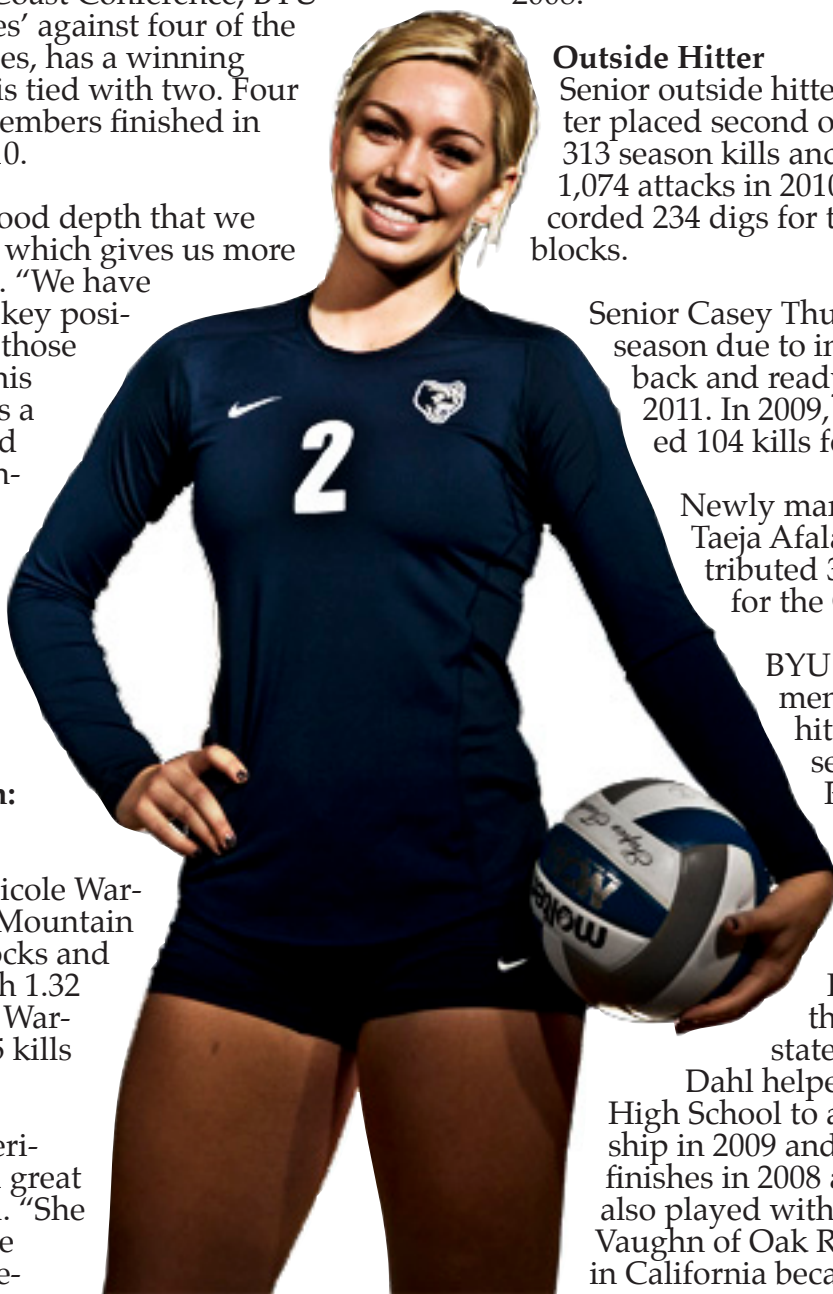
Senior Casey Thurston sat out last season due to injury, but will be back and ready for action in 2011. In 2009, Thurston recorded 104 kills for 1.58 per set.

Newly married sophomore Taea Afalava Toleafoa contributed 39 kills and 47 digs for the Cougars in 2010.

BYU adds three freshmen to the outside hitter position this season. Hannah

Robison was one of the top 100 recruits in the nation coming out of high school and helped Orem High School to a third-place finish in state in 2010. Kimberly

Dahl helped Pleasant Grove High School to a state championship in 2009 and second-place finishes in 2008 and 2010. She also played with Club Utah. Katie Vaughn of Oak Ridge High School in California became the all-time ca-



## 2011 Season Outlook

reer kill leader for the high school after the 2010 season with over 1,362 kills.

### Opposite Hitter

At opposite hitter, BYU's returners totaled more than 100 kills each during the 2010 season. Sophomore Jennifer Hamson helped the Cougars to their 9-7 conference record with 644 attacks, 246 kills, 74 digs and 74 blocks.

"Jen has worked hard this off-season," Olmstead said. "With one year more experience, we anticipate she'll continue to grow and get better with each opportunity on the court."

Hamson is joined by senior Camilla Phillips, who totaled 116 kills and 49 blocks last season.

### Setter

After backing up and learning from star setter Kiana Rogers last season, junior setter Heather Hannemann will take over for 2011. Hannemann had 71 assists, 17 digs and 13 attacks in the 2010 season.

Kemi McFarland joins the roster at setter after helping Salt Lake Community College to a 28-8 record and undefeated home record in 2010.

### Defensive Specialist/Libero

As the Cougar Club Y Award's Walk-On of the Year, Kendalyn Hartsock led the team with 411 digs and added 48 assists last season. Hartsock averaged 3.92 digs per set during conference play, placing her third in the league for digs.

Sophomore Coriann Clark contributed 128 digs for BYU in 2010.

Joining the Cougars, freshman Tia Withers, a Beaverton, Ore. native, helped Sunset High School to back-to-back third-place finishes in state. Withers also competed in beach volleyball, winning five beach championships and two beach doubles championships.

### Schedule

Five teams on this year's schedule qualified for the 2010 NCAA Division I Championships and four finished in the top 50 in the NCAA.

To kick off the season, the Cougars host No. 8 Illinois, UC Santa Barbara and WCC opponent Saint Mary's in the BYU Nike Invitational.

## 2011 BYU Women's Volleyball

Following a matchup with Weber State, the team heads to Kansas for the Kansas State Tournament to take on Idaho, Georgia Southern and Kansas State.

BYU finishes tournament play with the Utah Invitational in Salt Lake City, where the Cougars will face the Utes, UC Riverside and Eastern Michigan.

Matchups with BYU-Hawaii, Cal State Fullerton and Cal State Northridge round off pre-conference play.

League play starts at home with the season's second match against Saint Mary's. The Cougars are 2-2 against the Gaels, with their last matchup being in 2007.

BYU hits the road to compete against Loyola Marymount, looking to continue its undefeated record against Lions, followed by a matchup against 2010 WCC champion No. 20 San Diego. The Cougars will then host Santa Clara for their Dig Pink Match Oct. 6.

With a 12-6 series history against Pepperdine, the Cougars head to Malibu, Calif., to take on the Waves and continue the winning record.

Following the Pepperdine matchup, BYU meets Portland on the road for its first battle against the Pilots. The Cougars finish up the first half of conference play facing Gonzaga.

The Cougars welcome Pepperdine to Provo to begin the second half of conference play and end the season with back-to-back home matches against Gonzaga and Portland.

### Matches Televised on BYUtv

Illinois	Aug. 26	5:30 p.m. MDT
UC Santa Barbara	Aug. 27	10 a.m. MDT
Saint Mary's	Aug. 27	8 p.m. MDT
Weber State	Aug. 30	7 p.m. MDT
BYU-Hawaii	Sept. 7	7 p.m. MDT
Saint Mary's	Sept. 22	7 p.m. MDT
Santa Clara	Oct. 6	7 p.m. MDT
Pepperdine	Oct. 20	7 p.m. MDT
Loyola Marymount	Nov. 3	7 p.m. MDT
San Francisco	Nov. 5	7 p.m. MDT
Gonzaga	Nov. 17	7 p.m. MDT
Portland	Nov. 19	7 p.m. MDT

## ROSTER NOTES

### DOUBLE-DIGIT OUTINGS

#### KILLS

PLAYER	TOTAL	HIGH
Christie Carpenter	10	20
Jennifer Hamson	21	21
Jessica Jardine	1	10
Casey Thurston	1	13
Katie Vaughn	4	14
Nicole Warner	5	15

#### DIGS

PLAYER	TOTAL	HIGH
Christie Carpenter	7	15
Jennifer Hamson	11	18
Heather Hannemann	5	17
Kendalyn Hartsock	20	31
Jessica Jardine	1	10
Tia Withers	7	17

#### BLOCKS

PLAYER	TOTAL	HIGH
Nicole Warner	1	10
Kathryn LeCheminant	1	10

#### DOUBLE-DOUBLES

Christie Carpenter (3)  
vs. EMU (9/10) - 17 K and 12 D  
vs. Pepp. (10/8) - 14 K and 15 D  
vs. Port. (10/15) - 20 K and 11 D

Jennifer Hamson (9)  
vs. UCSB (8/27) - 17 K and 18 D  
vs. BYU-H (9/7) - 15 K and 10 D  
vs. Utah (9/10) - 15 K and 11 D  
vs. CSF (9/16) - 18 K and 13 D  
vs. CSUN (9/17) - 16 K and 13 D  
vs. LMU (9/29) - 21 K and 10 D  
vs. SCU (10/2) - 13 K and 12 D  
vs. Port. (10/15) - 16 K and 10 D  
vs. Pep. (10/20) - 17 K and 11 D

Heather Hannemann (5)  
vs. Illinois (8/26) - 27 A and 15 D  
vs. Saint Mary's (8/27) - 35 A and 10 D  
vs. EMU (9/10) - 44 A and 17 D  
vs. Utah (9/10) - 34 A and 10 D  
vs. LMU (9/29) - 52 A and 12 D

## WCC CURRENT STANDINGS

(AS OF NOV. 1, 2011)

PL.	TEAM	WCC RECORD	OVERALL	PRESEASON RANK
1.	Pepperdine	11-0	17-5	1
2.	San Diego	8-3	23-3	3
3.	BYU	7-4	18-7	6
4.	Loyola Marymount	6-5	13-11	5
T5.	San Francisco	5-6	13-11	T7
T5.	Saint Mary's	5-6	11-12	2
7.	Santa Clara	4-6	9-12	4
8.	Portland	2-9	8-16	T7
9.	Gonzaga	1-10	7-15	9

## AVCA DIVISION I COACHES POLL

(AS OF OCT. 31, 2011)

RANK	TEAM (FIRST-PLACE VOTES)	TOTAL POINTS	RECORD	LAST WEEK
1	UCLA (41)	1457	20-3	6
2	NEBRASKA (9)	1386	18-2	1
3	STANFORD (1)	1323	17-4	5
4	SOUTHERN CALIFORNIA (5)	1306	18-4	4
5	ILLINOIS (1)	1245	21-2	3
6	PENN STATE (1)	1218	17-5	8
7	CALIFORNIA	1179	21-4	2
8	HAWAI'I (2)	1112	24-1	7
9	TEXAS	1027	15-4	9
10	WASHINGTON	941	18-4	10
11	PURDUE	893	20-3	11
12	NORTHERN IOWA	843	24-1	12
13	IOWA STATE	735	17-4	14
14	PEPPERDINE	655	17-5	18
15	MINNESOTA	630	13-8	15
16	TENNESSEE	578	20-3	20
17	FLORIDA	542	17-5	13
18	FLORIDA STATE	460	19-4	19
19	KENTUCKY	390	21-4	24
20	OREGON	372	14-7	16
21	SAN DIEGO	327	23-3	17
22	OHIO STATE	170	16-9	23
23	MICHIGAN	146	16-8	22
24	COLORADO STATE	133	17-4	25
25	OKLAHOMA	105	19-6	21

### Class Breakdown

#### SENIOR (3)

Christie Carpenter  
Casey Thurston  
Camilla Phillips

Coriann Clark

Jennifer Hamson  
Jessica Jardine  
Kathryn LeCheminant  
Kemi Bonner

#### JUNIOR (4)

Heather Hannemann  
Kendalyn Hartsock  
Nicole Warner

#### FRESHMAN (5)

Kimberly Dahl  
Mariah Katoa  
Hannah Robison  
Katie Vaughn  
Tia Withers

#### SOPHOMORE (7)

Taeja Afalava  
Kimberli Boswell



### Shawn Olmstead Head Women's Volleyball Coach

Shawn Olmstead was named head coach of the women's volleyball team in 2011. He entered his first season as an assistant coach at BYU in 2008, serving as the recruiting, video and defensive coordinator. With Olmstead as assistant coach, the Cougars recorded 43 victories.

#### Coaching Career

Olmstead came to BYU with four years of coaching experience, most recently as an assistant coach for two years at Utah State under former BYU men's volleyball assistant coach Grayson DuBose. While at Utah State, Olmstead served as the program's recruiting coordinator, putting together the second-best recruiting class in the Western Athletic Conference in 2007. He also was responsible for defensive game preparation, including breaking down opponent film and preparing scouting reports. His efforts helped the Aggies rank 25th nationally in blocks per game in 2007.

Prior to his stint at Utah State, Olmstead spent one year as an assistant coach at Cal Poly San Luis Obispo in San Luis Obispo, Calif., in 2005 where he also served as the recruiting coordinator as well as organizing team travel. He helped the Mustangs achieve a 19-6 overall record, improving from 5-24 the year prior to Olmstead's arrival.

Before coaching at Cal Poly, Olmstead spent one year as a volunteer assistant coach for the women's program at Utah Valley State College. He has also coached with IVA High Performance and at various volleyball camps.

#### Playing Career

Olmstead attended BYU and played libero for the men's volleyball program, helping the Cougars win National Championships in 2001 and 2004 along with a national runner-up finish in 2003. During his senior season in 2004, Olmstead recorded the third-most digs in a single season in school history and earned Mountain Pacific Sports Federation All-Tournament honors.

A native of Carpinteria, Calif., Olmstead prepped at Carpinteria High School where he earned All-CIF volleyball honors as both a junior and senior along with being named his league's Most Valuable Player during his senior season. He set a school record by recording 47 kills in a match.

#### Personal

Olmstead graduated from BYU with a degree in Spanish Education in 2005 along with a Sociology minor. He is married to the former Farrah Hofheins, and they have two daughters and a son.



## BYU'S RECORD WHEN...

Facing ranked opponents .....	0-5
Facing unranked opponents .....	18-2
In three games .....	10-3
In four games .....	7-4
In five games .....	1-0
In first game of the match .....	19-6
In second game of the match .....	17-8
In third game of the match .....	13-12
In fourth game of the match .....	7-5
In fifth game of the match .....	1-0
Winning first game .....	17-2
Opponent wins first game .....	1-5
Recording more kills .....	12-0
Opponent records more kills .....	6-7
Opponent and BYU record equal number of kills .....	0-0
Recording higher hitting percentage .....	18-0
Opponent records higher hitting percentage .....	0-7
Opponent and BYU record equal hitting percentage .....	0-0
Hitting .300+ .....	7-0
Opponent hits .300+ .....	0-1
Three or more Cougars records 10+ kills .....	3-1
Three or more opponents record 10+ kills .....	2-2
Out-blocking opponent .....	15-2
Opponent out-blocks BYU .....	3-5
Opponent and BYU record equal number of blocks .....	0-0
Recording 12.0+ blocks .....	5-1
Opponent records 12.0+ blocks .....	1-0
Recording more digs .....	12-1
Opponent records more digs .....	5-6
Opponent and BYU record equal number of digs .....	1-0
In August .....	2-2
In September .....	11-1
In October .....	5-3
In November .....	0-0
In December .....	0-0
Last 10 matches/Current Streak .....	6-4
Longest win streak in 2011 .....	9
Playing on Monday .....	1-0
Playing on Tuesday .....	2-0
Playing on Wednesday .....	1-0
Playing on Thursday .....	4-1
Playing on Friday .....	3-2
Playing on Saturday .....	7-4

## 2011 BYU TEAM HIGHS

### KILLS

(3 games) .....	49 vs. BYU-H (9/7)
(4 games) .....	61 vs. Gonz. (10/17)
(5 games) .....	63 vs. LMU (9/29)

### ATTEMPTS

(3 games) .....	127 vs. Utah State (9/13)
(4 games) .....	158 vs. CSF (9/16)
(5 games) .....	177 vs. LMU (9/29)

### ASSISTS

(3 games) .....	46 vs. BYU-H (9/7)
(4 games) .....	56 vs. Gonz. (10/17)
(5 games) .....	58 vs. LMU (9/29)

### DIGS

(3 games) .....	71 vs. Utah State (9/13)
(4 games) .....	76 vs. USF (10/27)
(5 games) .....	75 vs. LMU (9/29)

### BLOCKS

(3 games) .....	16.5 vs. SMC (9/22)
(4 games) .....	16.0 vs. CSF (9/16)
(5 games) .....	21.0 vs. LMU (9/29)

## 2011 BYU INDIVIDUAL HIGHS

### KILLS

(3 games) .....	20, J. Hamson vs. Saint Mary's (8/27)
(4 games) .....	20, C. Carpenter vs. Port. (10/15)
(5 games) .....	21, J. Hamson vs. LMU (9/29)

### ATTEMPTS

(3 games) .....	46, J. Hamson vs. Saint Mary's (8/27)
(4 games) .....	48, J. Hamson vs. CSF (9/16)
(5 games) .....	54, J. Hamson vs. LMU (9/29)

### ASSISTS

(3 games) .....	42, H. Hannemann vs. BYU-H (9/7)
(4 games) .....	54, H. Hannemann vs. Gonz. (10/17)
(5 games) .....	52, H. Hannemann vs. LMU (9/29)

### DIGS

(3 games) .....	23, K. Hartsock vs. Utah State (9/13)
(4 games) .....	31, K. Hartsock vs. USF (10/27)
(5 games) .....	23, K. Hartsock vs. LMU (9/29)

### BLOCKS

(3 games) .....	10, N. Warner vs. SMC (9/22)
(4 games) .....	9, N. Warner vs. EMU (9/10)
(5 games) .....	10, K. LeCheminant vs. LMU (9/29)



## 2011 SEASON/CAREER HIGHS

NO.	NAME	KILLS	ATTEMPTS	HIT % (MIN. 8 ATT.)	DIGS	BLOCK ASSISTS	BLOCK SOLOS	TOTAL BLOCKS	SERVICE ACES	ASSISTS
1	Katie Vaughn	14 (UI, 9/2/11) 14 (UI, 9/2/11)	31 (UI, 9/2/11) 31 (UI, 9/2/11)	.421 (two times) .421 (two times)	3 (GSU, 9/2/11) 3 (GSU, 9/2/11)	5 (Gonz. 10/17/11) 5 (Gonz. 10/17/11)	1 (WSU, 8/30/11) 1 (WSU, 8/30/11)	4 (GSU, 9/2/11) 4 (GSU, 9/2/11)	1 (LMU, 9/29/11) 1 (LMU, 9/29/11)	-- --
2	Heather Hannemann	4 (SCU, 10/29/11) 4 (SCU, 10/29/11)	7 (two times) 7 (two times)	.333 (UCSB, 8/27/11) .333 (UCSB, 8/27/11)	17 (EMU, 9/10/11) 17 (EMU, 9/10/11)	5 (EMU, 9/10/11) 5 (EMU, 9/10/11)	1 (Utah, 9/10/11) 1 (two times)	5 (EMU, 9/10/11) 5 (EMU, 9/10/11)	3 (Pep, 10/20/11) 3 (Pep, 10/20/11)	54 (Gonz. 10/17/11) 54 (Gonz. 10/17/11)
4	Kathryn LeCheminant	8 (Gonz. 10/17/11) 10 (CP, 9/4/10)	17 (EMU, 9/10/11) 21 (CP, 9/4/10)	.636 (BYUH, 9/7/11) .636 (BYUH, 9/7/11)	3 (UCSB, 8/27/11) 3 (UCSB, 8/27/11)	8 (SCU, 10/6/11) 8 (SCU, 10/6/11)	4 (LMU, 9/29/11) 4 (LMU, 9/29/11)	10 (LMU, 9/29/11) 10 (LMU, 9/29/11)	-- --	1 (two times) 1 (two times)
5	Mariah Katoa	-- --	-- --	-- --	-- --	-- --	-- --	-- --	-- --	-- --
6	Kendalyn Hartssock	1 (two times) 1 (three times)	2 (Utah, 9/10/11) 2 (two times)	-- --	31 (USF, 10/27/11) 31 (USF, 10/27/11)	-- --	-- --	-- --	2 (two times) 2 (four times)	5 (Pep, 10/8/11) 5 (two times)
10	Camilla Phillips	1 (USD, 10/22/11) 14 (CSU, 11/14/09)	2 (EMU, 9/10/11) 34 (Utah, 10/23/09)	-- .500 (CSU, 11/14/09)	-- 5 (NDSU, 9/29/09)	-- 7 (UVU, 10/27/09)	-- --	-- 7 (UVU, 10/27/09)	-- --	-- 1 (four times)
11	Coriann Clark	-- 3 (MT, 8/28/10)	-- 13 (MT, 8/28/10)	-- .154 (MT, 8/28/10)	-- 13 (UNM, 11/20/10)	-- --	-- --	-- --	-- 1 (Ill, 8/27/10)	-- 5 (UNLV, 11/11/10)
12	Jessica Jardine	10 (UCSB, 8/27/11) 10 (UCSB, 8/27/11)	28 (ILL, 8/26/11) 29 (Wyo, 9/25/10)	.294 (USD, 10/1/11) .294 (USD, 10/1/11)	10 (SMC, 8/27/11) 10 (SMC, 8/27/11)	2 (two times) 2 (three times)	-- --	2 (two times) 2 (three times)	1 (three times) 2 (Wyo, 9/25/10)	2 (ILL, 8/26/11) 2 (ILL, 8/26/11)
13	Kimberly Dahl	-- --	-- --	-- --	-- --	-- --	-- --	-- --	-- --	-- --
14	Christie Carpenter	20 (Port. 10/25/11) 21 (Wyo, 10/17/09)	44 (two times) 57 (two times)	.625 (SCU, 10/6/11) .625 (SCU, 10/6/11)	15 (Pep, 10/8/11) 15 (two times)	5 (three times) 7 (three times)	1 (EMU, 9/10/11) 1 (nine times)	5 (three times) 8 (CSU, 9/24/10)	5 (Gonz. 10/17/11) 5 (Gonz. 10/17/11)	3 (GSU, 9/2/11) 3 (GSU, 9/2/11)
15	Nicole Warner	15 (GSU, 9/2/11) 15 (GSU, 9/2/11)	25 (USD, 10/22/11) 31 (CP, 9/4/10)	.737 (GSU, 9/2/11) .750 (WSU, 10/12/10)	5 (GSU, 9/2/11) 6 (Wyo, 10/17/09)	9 (Utah, 9/10/11) 12 (Wyo, 11/24/10)	1 (three times) 2 (two times)	9 (two times) 11 (LMU, 9/10/10)	1 (two times) 3 (two times)	2 (UI, 9/2/11) 2 (UI, 9/2/11)
16	Hannah Robison	-- --	-- --	-- --	-- --	-- --	-- --	-- --	-- --	-- --
17	Tia Withers	1 (LMU, 9/29/11) 1 (LMU, 9/29/11)	4 (UCSB, 8/27/11) 4 (UCSB, 8/27/11)	-- --	17 (USF, 10/27/11) 17 (USF, 10/27/11)	-- --	-- --	-- --	2 (five times) 2 (five times)	3 (two times) 3 (two times)
18	Kemi Bonner	-- --	-- --	-- --	1 (USD, 10/1/11) 1 (USD, 10/1/11)	-- --	-- --	-- --	-- --	7 (USD, 10/1/11) 7 (USD, 10/1/11)
19	Jennifer Hamson	21 (LMU, 9/29/11) 21 (LMU, 9/29/11)	54 (LMU, 9/29/11) 54 (LMU, 9/29/11)	.667 (SCU, 10/29/11) .667 (SCU, 10/29/11)	18 (UCSB, 8/27/11) 18 (UCSB, 8/27/11)	7 (USU, 9/13/11) 7 (three times)	3 (LMU, 9/29/11) 3 (LMU, 9/29/11)	8 (LMU, 9/29/11) 8 (two times)	5 (two times) 5 (two times)	2 (Port. 10/25/11) 2 (LMU, 9/10/10)
20	Casey Thurston	13 (LMU, 9/29/11) 13 (two times)	42 (LMU, 9/29/11) 42 (LMU, 9/29/11)	.500 (Utah, 9/10/11) .500 (three times)	4 (LMU, 9/29/11) 4 (LMU, 9/29/11)	4 (CSF, 9/16/11) 4 (two times)	2 (LMU, 9/29/11) 2 (LMU, 9/29/11)	5 (LMU, 9/29/11) 5 (two times)	-- --	1 (LMU, 9/29/11) 1 (three times)
21	Taeja Afalava Toleafoa	-- 10 (SC, 8/28/10)	-- 39 (SC, 8/28/10)	-- .364 (SDSU, 11/6/10)	-- 19 (SC, 8/28/10)	-- 2 (Neb, 9/3/10)	-- --	-- 2 (Neb, 9/3/10)	-- 2 (Ill, 8/27/10)	-- 1 (two times)
22	Kimberli Boswell	1 (four times) 6 (AFA, 11/13/10)	3 (USD, 10/1/11) 17 (AFA, 11/13/10)	-- .118 (AFA, 11/13/10)	2 (Pep, 10/20/11) 2 (Pep, 10/20/11)	2 (three times) 5 (AFA, 11/13/10)	-- 1 (AFA, 11/13/10)	2 (three times) 6 (AFA, 11/13/10)	1 (USD, 10/1/11) 2 (AFA, 10/14/10)	-- --

## MATCH-BY-MATCH STARTERS

MATCH	SETTER	LIBERO	OPPOSITE	OUT. HITTER	OUT. HITTER	MID. BLOCKER	MID. BLOCKER
Illinois (8/26)	H. Hannemann	K. Hartsock	J. Hamson	C. Thurston	J. Jardine	N. Warner	K. LeCheminant
UCSB (8/27)	H. Hannemann	K. Hartsock	J. Hamson	C. Thurston	J. Jardine	N. Warner	K. LeCheminant
Saint Mary's (8/27)	H. Hannemann	K. Hartsock	J. Hamson	K. Vaughn	J. Jardine	N. Warner	K. LeCheminant
WSU (8/30)	H. Hannemann	K. Hartsock	J. Hamson	K. Vaughn	J. Jardine	N. Warner	K. LeCheminant
Idaho (9/2)	H. Hannemann	K. Hartsock	J. Hamson	K. Vaughn	C. Carpenter	N. Warner	K. LeCheminant
Georgia Southern (9/2)	H. Hannemann	K. Hartsock	J. Hamson	K. Vaughn	C. Carpenter	N. Warner	K. LeCheminant
Kansas State (9/3)	H. Hannemann	K. Hartsock	J. Hamson	K. Vaughn	C. Carpenter	N. Warner	K. LeCheminant
BYU-Hawaii (9/7)	H. Hannemann	K. Hartsock	J. Hamson	K. Vaughn	C. Carpenter	N. Warner	K. LeCheminant
UC Riverside (9/9)	H. Hannemann	K. Hartsock	J. Hamson	T. Withers (DS)	C. Carpenter	N. Warner	K. LeCheminant
Eastern Michigan (9/10)	H. Hannemann	K. Hartsock	J. Hamson	T. Withers (DS)	C. Carpenter	N. Warner	K. LeCheminant
Utah (9/10)	H. Hannemann	K. Hartsock	J. Hamson	K. Vaughn	C. Carpenter	N. Warner	K. LeCheminant
Utah State (9/13)	H. Hannemann	K. Hartsock	J. Hamson	T. Withers (DS)	C. Carpenter	N. Warner	K. LeCheminant
CSF (9/16)	H. Hannemann	K. Hartsock	J. Hamson	T. Withers (DS)	C. Carpenter	N. Warner	K. LeCheminant
CSUN (9/17)	H. Hannemann	K. Hartsock	J. Hamson	T. Withers (DS)	C. Carpenter	N. Warner	K. LeCheminant
Saint Mary's (9/22)	H. Hannemann	K. Hartsock	J. Hamson	T. Withers (DS)	C. Carpenter	N. Warner	K. LeCheminant
LMU (9/29)	H. Hannemann	K. Hartsock	J. Hamson	T. Withers (DS)	C. Carpenter	N. Warner	K. LeCheminant
San Diego (10/1)	H. Hannemann	K. Hartsock	J. Hamson	T. Withers (DS)	C. Carpenter	N. Warner	K. LeCheminant
Santa Clara (10/6)	H. Hannemann	K. Hartsock	J. Hamson	T. Withers (DS)	C. Carpenter	N. Warner	K. LeCheminant
Pepperdine (10/8)	H. Hannemann	K. Hartsock	J. Hamson	T. Withers (DS)	C. Carpenter	N. Warner	K. LeCheminant
Portland (10/15)	H. Hannemann	K. Hartsock	J. Hamson	T. Withers (DS)	C. Carpenter	N. Warner	K. LeCheminant
Gonzaga (10/17)	H. Hannemann	K. Hartsock	J. Hamson	T. Withers (DS)	C. Carpenter	N. Warner	K. LeCheminant
Pepperdine (10/20)	H. Hannemann	K. Hartsock	J. Hamson	T. Withers (DS)	C. Carpenter	N. Warner	K. LeCheminant
San Diego (10/22)	H. Hannemann	K. Hartsock	J. Hamson	T. Withers (DS)	C. Carpenter	N. Warner	K. LeCheminant
San Francisco (10/27)	H. Hannemann	K. Hartsock	J. Hamson	T. Withers (DS)	C. Carpenter	N. Warner	K. LeCheminant
Santa Clara (10/29)	H. Hannemann	K. Hartsock	J. Hamson	T. Withers (DS)	C. Carpenter	N. Warner	K. LeCheminant

## MATCH-BY-MATCH STAT LEADERS

OPPONENT	KILLS	ATTEMPTS	ASSISTS	ACES	DIGS	BLOCKS
Illinois (8/26)	17 J. Hamson	42 J. Hamson	27 H. Hannemann	1 J. Jardine	15 H. Hannemann	5 K. LeCheminant
UCSB (8/27)	17 J. Hamson	34 J. Hamson	36 H. Hannemann	2 J. Hamson	20 K. Hartsock	6 LeCheminant/Warner
Saint Mary's (8/27)	20 J. Hamson	46 J. Hamson	35 H. Hannemann	--	10 Hannemann/Jardine/Hartsock	5 J. Hamson
WSU (8/30)	11 J. Hamson	26 J. Hamson	33 H. Hannemann	2 T. Withers	10 K. Hartsock	6 N. Warner
Idaho (9/2)	14 K. Vaughn	31 K. Vaughn	26 H. Hannemann	2 H. Hannemann	12 Hartsock/Carpenter	6 N. Warner
Georgia Southern (9/2)	15 N. Warner	31 J. Hamson	48 H. Hannemann	2 Hamson/Withers	17 K. Hartsock	6 N. Warner
Kansas State (9/3)	17 J. Hamson	32 J. Hamson	33 H. Hannemann	2 Hannemann/Hartsock	15 K. Hartsock	6 N. Warner
BYU-Hawaii (9/7)	15 J. Hamson	33 J. Hamson	42 H. Hannemann	5 J. Hamson	19 K. Hartsock	2 K. LeCheminant
UC Riverside (9/9)	8 J. Hamson/C. Carpenter	23 C. Carpenter	23 H. Hannemann	2 C. Carpenter	12 J. Hamson	6 N. Warner
Eastern Michigan (9/10)	17 C. Carpenter	44 C. Carpenter	44 H. Hannemann	--	21 K. Hartsock	9 N. Warner
Utah (9/10)	15 H. Hamson	25 C. Carpenter	34 H. Hannemann	3 C. Carpenter	14 K. Hartsock	9 N. Warner
Utah State (9/13)	13 J. Hamson/N. Warner	34 C. Carpenter	36 H. Hannemann	2 H. Hannemann	23 K. Hartsock	7 J. Hamson
CSF (9/16)	18 J. Hamson	48 J. Hamson	48 H. Hannemann	3 J. Hamson	17 K. Hartsock	8 N. Warner
CSUN (9/17/11)	16 J. Hamson	39 J. Hamson	34 H. Hannemann	2 J. Hamson	25 K. Hartsock	3 Warner/LeCheminant
Saint Mary's (9/22)	12 J. Hamson	25 C. Carpenter	27 H. Hannemann	4 J. Hamson	7 Hannemann/Hartsock	10 N. Warner
LMU (9/29)	21 J. Hamson	54 J. Hamson	52 H. Hannemann	--	23 K. Hartsock	10 K. LeCheminant
San Diego (10/1)	8 N. Warner	19 N. Warner	20 H. Hannemann	--	6 T. Withers	4 N. Warner
Santa Clara (10/6)	13 J. Hamson	22 J. Hamson	34 H. Hannemann	2 T. Withers	12 J. Hamson	8 K. LeCheminant
Pepperdine (10/8)	14 C. Carpenter	44 J. Hamson	32 H. Hannemann	2 J. Hamson	21 K. Hartsock	6 N. Warner
Portland (10/15)	20 C. Carpenter	44 C. Carpenter	45 H. Hannemann	2 T. Withers	18 K. Hartsock	4 N. Warner
Gonzaga (10/17)	17 C. Carpenter	34 C. Carpenter	54 H. Hannemann	5 C. Carpenter	17 K. Hartsock	6 K. LeCheminant
Pepperdine (10/20)	17 J. Hamson	44 J. Hamson	36 H. Hannemann	3 H. Hannemann	17 K. Hartsock	5 LeCheminant/Warner
San Diego (10/22)	14 C. Carpenter	36 C. Carpenter	36 H. Hannemann	2 K. Hartsock	9 Withers/Hartsock	5 C. Carpenter
San Francisco (10/27)	16 C. Carpenter	42 C. Carpenter	41 H. Hannemann	5 J. Hamson	31 K. Hartsock	7 K. LeCheminant
Santa Clara (10/29)	16 J. Hamson	21 J. Hamson	29 H. Hannemann	2 C. Carpenter	7 K. Hartsock	6 K. LeCheminant















# Box Scores

# 2011 BYU Women's Volleyball

## Match 25: BYU vs. Santa Clara

## Match 26: BYU vs. Loyola Marymount

Volleyball Box Score

BYU vs SCU (10/29/2011 at Santa Clara, Calif.)

##	BYU	SP	K	E	TA	PCT	A	SA	SE	RE	DIG	BS	BA	BE	BHE
2	HANNEMANN, Heather	3	4	0	5	.800	29	1	1	0	6	0	1	0	0
4	LECHEMINANT, Kathryn	3	3	2	8	.125	0	0	0	0	1	0	6	0	0
14	CARPENTER, Christie	3	4	2	19	.105	1	2	1	1	2	0	3	0	0
15	WARNER, Nicole	3	4	1	10	.300	0	0	0	0	1	0	3	0	0
17	WITHERS, Tia	3	0	0	0	.000	1	1	0	0	5	0	0	0	0
19	HAMSON, Jennifer	3	16	2	21	.667	1	1	1	0	6	0	5	0	0
1	VAUGHN, Katie	3	5	2	17	.176	0	0	0	0	0	0	1	0	0
6	HARTSOCK, Kendalyn	3	1	0	1	1.000	1	0	0	0	7	0	0	0	0
20	THURSTON, Casey	1	0	0	1	.000	0	0	0	0	0	0	0	0	0
	Totals.....	3	37	9	82	.341	33	5	3	1	28	0	19	0	0
	0														

### TEAM ATTACK PER SET

Set	K	E	TA	Pct
1	9	0	21	.429
2	16	3	29	.448
3	12	6	32	.188

TOTAL TEAM BLOCKS: 9.5

SET SCORES	1	2	3	TEAM RECORDS
BYU	25	25	25	18-7, 7-4 WCC
SCU	11	19	22	9-12, 2-5 WCC

##	SCU	SP	K	E	TA	PCT	A	SA	SE	RE	DIG	BS	BA	BE	BHE
7	ANDERSON, Alyssa	3	0	0	2	.000	37	0	1	0	3	0	0	1	0
10	DURKET, Kaleigh	3	10	4	22	.273	1	0	1	2	3	0	2	0	0
11	DOUGLAS, Katherine	3	5	3	17	.118	0	0	2	1	8	1	0	0	0
13	KNUDSEN, Dana	3	12	2	16	.625	0	0	0	0	1	0	1	0	0
15	ANDERS, Megan	3	4	6	16	.125	0	0	0	0	1	0	1	0	0
20	LOMMORI, Kayla	2	3	6	12	.250	0	0	0	0	2	0	0	0	0
1	WILLIAMSON, Lexi	3	3	6	12	.250	0	0	1	0	2	0	0	0	0
3	SCHATZMAN, Katy	3	0	0	0	.000	0	0	2	3	0	0	0	0	0
8	SLIGER, Chloe	2	0	0	0	.000	0	0	1	0	0	0	0	0	0
18	O'HARA, Bridget	3	1	0	1	1.000	1	0	0	0	11	0	0	0	0
	Totals.....	3	38	27	98	.112	38	1	6	5	34	1	4	1	0

### TEAM ATTACK PER SET

Set	K	E	TA	Pct
1	10	15	34	.147
2	13	3	24	.417
3	15	9	40	.150

TOTAL TEAM BLOCKS: 3.0

Site: Santa Clara, Calif. (Leavey Center)  
 Date: 10/29/2011 Attend: 333 Time: 1:20  
 Referees: Eric Asami, Tony Wu, Mark Rogers

## Match 27: BYU vs. San Francisco

## Match 28: BYU vs. Saint Mary's

# BYU Women's Volleyball

## 2011 Season Stats: All Matches

### BYU Cougar Volleyball 2011 BYU Combined Team Statistics (as of Oct 29, 2011) All matches

Overall record: 18-7 Conf: 7-4 Home: 5-4 Away: 9-3 Neutral: 4-0

#	Player	sp	Attack				Set		Serve			Dig			Blocking					points		
			k	k/s	e	ta	pct	a	a/s	sa	se	sa/s	re	dig	dig/s	bs	ba	total	blk/s		be	bhe
19	HAMSON, Jennifer	88	352	4.00	104	808	.307	6	0.07	34	50	0.39	0	217	2.47	6	86	92	1.05	4	0	-
4	LECHEMINANT, Kathy	88	112	1.27	39	256	.285	2	0.02	0	0	0.00	3	22	0.25	11	91	102	1.16	6	1	-
15	WARNER, Nicole	88	167	1.90	61	392	.270	8	0.09	5	19	0.06	0	38	0.43	4	127	131	1.49	16	0	-
14	CARPENTER, Christie	77	221	2.87	73	651	.227	16	0.21	21	13	0.27	32	172	2.23	1	47	48	0.62	6	0	-
1	VAUGHN, Katie	62	115	1.85	49	336	.196	1	0.02	1	0	0.02	14	18	0.29	1	29	30	0.48	4	0	-
2	HANNEMANN, Heather	88	29	0.33	12	87	.195	905	10.28	21	15	0.24	0	184	2.09	2	42	44	0.50	3	3	-
6	HARTSOCK, Kendalyn	88	2	0.02	1	8	.125	52	0.59	9	15	0.10	24	384	4.36	0	0	0	0.00	0	5	-
20	THURSTON, Casey	42	66	1.57	32	277	.123	1	0.02	0	0	0.00	3	15	0.36	2	24	26	0.62	2	0	-
12	JARDINE, Jessica	24	42	1.75	31	129	.085	5	0.21	3	4	0.12	5	27	1.12	0	7	7	0.29	2	0	-
17	WITHERS, Tia	88	2	0.02	1	16	.062	18	0.20	17	12	0.19	8	185	2.10	0	0	0	0.00	0	1	-
22	BOSWELL, Kimberli	15	5	0.33	4	16	.062	0	0.00	1	0	0.07	0	3	0.20	0	10	10	0.67	0	0	-
18	BONNER, Kemi	3	0	0.00	0	0	.000	9	3.00	0	0	0.00	0	1	0.33	0	0	0	0.00	0	0	-
11	CLARK, Coriann	4	0	0.00	0	0	.000	0	0.00	0	0	0.00	0	1	0.25	0	0	0	0.00	0	0	-
7	ROBISON, Hannah	2	0	0.00	0	0	.000	0	0.00	0	0	0.00	0	0	0.00	0	0	0	0.00	0	0	-
10	PHILLIPS, Camilla	3	1	0.33	2	3	-.333	0	0.00	0	0	0.00	0	0	0.00	0	0	0	0.00	0	0	-
BYU		88	1114	12.66	409	2979	.237	1023	11.62	112	128	1.27	92	1267	14.40	27	463	258.5	2.94	43	10	-
Opponents		88	1141	12.97	630	3230	.158	1080	12.27	92	181	1.05	112	1281	14.56	27	268	161.0	1.83	48	7	-

Team Statistics	BYUW11	OPP
<b>ATTACK</b>		
Kills	1114	1141
Errors	409	630
Total Attacks	2979	3230
Attack Pct	.237	.158
Kills/Set	12.7	13.0
<b>SET</b>		
Assists	1023	1080
Assists/Set	11.6	12.3
<b>SERVE</b>		
Aces	112	92
Errors	128	181
Aces/Set	1.3	1.0
<b>SERVE RECEPTIONS</b>		
Errors	92	112
Errors/Set	1.0	1.3
<b>DEFENSE</b>		
Digs	1267	1281
Digs/Set	14.4	14.6
<b>BLOCKING</b>		
Block Solo	27	27
Block Assist	463	268
Total Blocks	258.5	161.0
Blocks/Set	2.9	1.8
Block Errors	43	48
Ball handling errors	10	7
<b>ATTENDANCE</b>		
Total	12546	7717
Dates/Avg Per Date	9/1394	12/643
Neutral site #/Avg	4/58	
Current win streak	2	-
Home win streak	0	-

Date	Opponent	Score	Score by set	Att.
Aug 26	#8 ILLINOIS	L 0-3	26-28,22-25,16-25	2741
Aug 27	UC SANTA BARBARA	w 3-1	18-25,25-14,25-17,25-9	265
Aug 27	SAINT MARY'S	L 0-3	21-25,22-25,29-31	1040
Aug 30	WSU	w 3-0	25-14,25-21,28-26	1405
Sep 02	vs UI	w 3-0	25-16,25-17,25-21	0
Sep 02	vs Georgia Southern	w 3-1	25-20,25-22,23-25,25-9	0
Sep 03	at Kansas State	w 3-0	25-23,25-19,25-23	1195
Sep 07	BYU-HAWAII	w 3-0	25-19,25-15,25-20	1631
Sep 09	vs UC Riverside	w 3-0	25-20,25-14,25-16	135
Sep 10	vs Eastern Michigan	w 3-1	25-19,25-23,16-25,25-8	97
Sep 10	at Utah	w 3-0	25-20,25-17,25-14	1010
Sep 13	at Utah State	w 3-0	25-22,25-21,25-19	1213
Sep 16	at Cal State Fullerton	L 1-3	22-25,22-25,26-24,23-25	387
Sep 17	at Cal State Northridge	w 3-1	25-15,25-22,16-25,25-17	262
*Sep 22	SAINT MARY'S	w 3-0	25-14,25-17,25-13	844
*Sep 29	at LMU	w 3-2	25-23,19-25,25-22,25-27,15-9	720
*Oct 01	at #18 San Diego	L 0-3	16-25,16-25,23-25	308
*Oct 06	SCU	w 3-0	25-14,25-19,25-13	948
*Oct 08	at #20 Pepperdine	L 1-3	16-25,17-25,25-22,25-27	309
*Oct 15	at Portland	w 3-1	25-16,25-17,18-25,25-15	274
*Oct 17	at GONZAGA BULLDOGS	w 3-1	25-23,25-8,25-27,25-19	1197
*Oct 20	PEPPERDINE	L 1-3	25-22,18-25,22-25,19-25	1452
*Oct 22	SAN DIEGO	L 1-3	25-23,20-25,21-25,17-25	2220
*Oct 27	at San Francisco Dons	w 3-1	25-19,25-14,23-25,25-23	509
*10/29/2011	at SCU	w 3-0	25-11,25-19,25-22	333

Record in 3-set matches:10-3 • Record in 4-set matches:7-4 • Record in 5-set matches:1-0