



BYU Women's Volleyball

Week 5: Saint Mary's

2011 QUICK FACTS

UNIVERSITY INFORMATION

Location	Provo, Utah 84602
Elevation	4,553 feet
Enrollment	33,278 (Daytime)
Founded	October 15, 1875
Owned:	The Church of Jesus Christ of Latter-day Saints
Nickname	Cougars
Mascot	Cosmo
Colors	Dark blue and white
Conference	West Coast Conference
Arena	Smith Fieldhouse (5,000) wood floor
BYU President	Cecil O. Samuelson (Utah, 1970)
Athletics Director	Tom Holmoe (BYU, 1983)

VOLLEYBALL INFORMATION

Head Coach	Shawn Olmstead (BYU, 2005)
Office Phone	801-422-2808
Assistant Coaches	Heather Olmstead (Utah State, 2001)
	Emillie Toone (Utah, 2009)
Olmstead Record at BYU:	11-3
Olmstead Career Record	Same
BYU's All-Time Record:	1,071-327-5 (.764)
2010 Record	14-16
2010 MWC Record	9-7 (4th)
2010 NCAA	None
2010 Final Ranking	No. 86
Starters Returning/Lost	4/3
Letterwinners Returning/Lost	8/4
Other Players Returning/Lost	4/2
Newcomers	6

ATHLETIC COMMUNICATIONS

Primary Volleyball Contact	Rachel Hawks
Phone	801-422-8999
Cell	801-380-9668
E-mail	wvolleyball_sid@byu.edu
Secondary Volleyball Contact	Kyle Chilton
Phone	801-422-4909
E-mail	kyle_chilton@byu.edu
Homepage	www.byucougars.com
Pressrow Phone	520-227-7720
Mailing Address	BYU Athletic Communications 30 Smith Fieldhouse Provo, Utah 84602

QUICK REFERENCE

BYU 2011 Record: 11-3

BYU WCC Record: 0-0

2011 BYU WOMEN'S VOLLEYBALL SCHEDULE

Date	Opponent	Site	Time/Result
Aug. 23	Blue and White Match	PROVO, UT	5 p.m.
Aug. 26-27	BYU Nike Invitational	PROVO, UT	
Aug. 26	No. 8 Illinois		L, 3-0
Aug. 27	UC Santa Barbara		W, 3-1
Aug. 27	Saint Mary's		L, 3-0
Aug. 30	Weber State	PROVO, UT	W, 3-0
Sept. 2-3	Kansas State Tournament	Manhattan, KS	
Sept. 2	Idaho		W, 3-0
Sept. 2	Georgia Southern		W, 3-1
Sept. 3	Kansas State		W, 3-0
Sept. 7	BYU-Hawaii	PROVO, UT	W, 3-0
Sept. 9-10	Utah Invitational	Salt Lake City, UT	
Sept. 9	UC Riverside		W, 3-0
Sept. 10	Eastern Michigan		W, 3-1
Sept. 10	Utah		W, 3-0
Sept. 13	Utah State	Logan, UT	W, 3-0
Sept. 16	Cal State Fullerton	Fullerton, CA	L, 3-1
Sept. 17	Cal State Northridge	Northridge, CA	W, 3-1
Sept. 22	Saint Mary's*	PROVO, UT	7 p.m.
Sept. 29	Loyola Marymount*	Los Angeles, CA	7 p.m.
Oct. 1	San Diego*	San Diego, CA	1 p.m.
Oct. 6	Santa Clara*-Dig Pink Match	PROVO, UT	7 p.m.
Oct. 8	Pepperdine*	Malibu, CA	1 p.m.
Oct. 15	Portland*	Portland, OR	1 p.m.
Oct. 17	Gonzaga*	Spokane, WA	7 p.m.
Oct. 20	Pepperdine*	PROVO, UT	7 p.m.
Oct. 22	San Diego*	PROVO, UT	7 p.m.
Oct. 27	San Francisco*	San Francisco, CA	6 p.m.
Nov. 3	Loyola Marymount*	PROVO, UT	7 p.m.
Nov. 5	San Francisco*	PROVO, UT	7 p.m.
Nov. 10	Saint Mary's*	Moraga, CA	7 p.m.
Nov. 17	Gonzaga*	PROVO, UT	7 p.m.
Nov. 19	Portland*	PROVO, UT	7 p.m.

* denotes West Coast Conference matches.

** all times listed are local to site and subject to change.

2011 NUMERICAL ROSTER

No.	Name	Pos.	Ht.	Cl.	Exp.	Hometown (Previous School)
1	Katie Vaughn	OH	6-2	FR	HS	El Dorado Hills, Calif. (Oak Ridge HS)
2	Heather Hannemann	S	5-8	JR	HS	Alpine, Utah (Lone Peak HS)
4	Kathryn LeCheminant	MB	6-2	SO	RS	Layton, Utah (Layton HS)
5	Mariah Katoa	MB	6-0	FR	HS	Layton, Utah (Layton HS)
6	Kendalyn Hartsock	L	5-6	JR	HS	Kalispell, Mont. (Flathead HS)
7	Hannah Robison	OH	6-0	FR	HS	Orem, Utah (Orem HS)
10	Camilla Phillips	OH/RS	5-11	SR	TR	South Jordan, Utah (Salt Lake CC)
11	Coriann Clark	DS/L	5-10	SO	HS	Bozeman, Mont. (Bozeman HS)
12	Jessica Jardine	OH	6-1	SO	HS	American Fork, Utah (American Fork HS)
13	Kimberly Dahl	OH	6-0	FR	HS	Pleasant Grove, Utah (Pleasant Grove HS)
14	Christie Carpenter	OH	6-1	SR	1L	Cedar Hills, Utah (Lone Peak HS)
15	Nicole Warner	MB	6-2	JR	RS	Rigby, Idaho (Rigby HS)
17	Tia Withers	DS/L	5-9	FR	HS	Beaverton, Ore. (Sunset HS)
18	Kemi McFarland	S	6-1	SO	TR	Pleasant Grove, Utah (SLCC)
19	Jennifer Hamson	RS	6-6	SO	HS	Pleasant Grove, Utah (Pleasant Grove HS)
20	Casey Thurston	OH	6-1	SR	1L	West Valley City, Utah (Granger HS)
21	Taeja Afalava Toleafoa	DS/OH	5-11	SO	HS	South Jordan, Utah (Bingham HS)
22	Kimberli Boswell	MB/RS	6-2	SO	HS	Aloha, Ore. (Aloha HS)

Head Coach: Shawn Olmstead (BYU 2005) – First Season
 Assistant Coaches: Heather Olmstead, Emillie Toone
 Trainer: Dan Graham
 Director of Volleyball Operations: Giuseppe Vinci

2011 ALPHABETICAL ROSTER

Name	No.	Pos.
Kimberli Boswell	22	MB/RS
Christie Carpenter	14	OH
Coriann Clark	11	DS/L
Kimberly Dahl	13	OH
Jennifer Hamson	19	RS
Heather Hannemann	2	S
Kendalyn Hartsock	6	L
Jessica Jardine	12	OH
Mariah Katoa	5	MB
Kathryn LeCheminant	4	MB
Kemi McFarland	18	S
Camilla Phillips	10	OH/RS
Hannah Robison	7	OH
Casey Thurston	20	OH
Taeja Afalava Toleafoa	21	DS/OH
Katie Vaughn	1	OH
Nicole Warner	15	MB
Tia Withers	17	DS/L

ROSTER BREAKDOWN

Returning Starters (4)

Name	Pos.	Ht.	Cl.	Pct.	KPG	DPG	BPG
Christie Carpenter	OH	6-1	SR	.126	2.61	1.95	.560
Jennifer Hamson	RS	6-6	SO	.261	2.76	.830	.830
Kendalyn Hartsock	L	5-6	JR	-.100	.020	3.61	.420*
Nicole Warner	MB	6-2	JR	.225	1.67	.610	1.32

* Assists per game

Starters Lost (3)

Name	Pos.	Ht.	Cl.	Pct.	KPG	DPG	BPG
Christina Measom	RS	6-0	SR	.185	2.30	.430	.580
Kiana Rogers	S	5-11	SR	.203	9.80*	2.62	.550
Stephanie Snow	MB/OH	6-4	SR	.352	2.63	.460	.750

* Assists per game

Returning Letterwinners (8)

Name	Pos.	Ht.	Cl.	Pct.	KPG	DPG	BPG
Christie Carpenter	OH	6-1	SR	.126	2.61	1.95	.560
Coriann Clark	OH/DS	5-9	SO	-.015	.09	1.33	.000
Jennifer Hamson	RS	6-6	SO	.261	2.76	.830	.830
Kendalyn Hartsock	L	5-6	JR	-.100	.020	3.61	.420*
Jessica Jardine	OH	6-1	SO	.014	1.32	.790	.110
Kathryn LeCheminant	MB	6-2	SO	.221	1.18	.210	.820
Taeja Afalava Toleafoa	OH/DS	5-11	SO	.068	.980	1.17	.150
Nicole Warner	MB	6-2	JR	.225	1.67	.610	1.32

* Assists per game

Letterwinners Lost (4)

Name	Pos.	Ht.	Cl.	Pct.	KPG	DPG	BPG
Christina Measom	RS	6-0	SR	.185	2.30	.430	.580
Kiana Rogers	S	5-11	SR	.203	9.80*	2.62	.550
Stephanie Snow	MB/OH	6-4	SR	.352	2.63	.460	.750
Brooke Soon	S	5-11	JR	.250	.020	1.97	.390*

* Assists per game

Others Returning (4)

Name	Pos.	Ht.	Cl.	Pct.	KPG	DPG	BPG
Kimberli Boswell	MB/RS	6-2	SO	.129	.830	.170	.670
Heather Hannemann	S	5-8	JR	.308	.310	1.06	.250
Camilla Phillips	RS	5-11	SR				
Casey Thurston	OH	6-1	SR				

* Assists per game

Others Lost (2)

Name	Pos.	Ht.	Cl.	Pct.	KPG	DPG	BPG
Courtney Honka	L/DS	5-8	JR	.000	.000	1.25	.000
Lauren Sagers	RS	6-0	JR				

Newcomers (6)

Name	Pos.	Ht.	Cl.
Kimberly Dahl	OH	6-0	FR
Mariah Katoa	MB	6-0	FR
Kemi McFarland	S	6-1	SO
Hannah Robison	OH	6-0	FR
Katie Vaughn	OH	6-2	FR
Tia Withers	DS/L	5-9	FR

Geographic Breakdown

CALIFORNIA (1)

Katie Vaughn

IDAHO (1)

Nicole Warner

MONTANA (2)

Coriann Clark
Kendalyn Hartsock

OREGON (2)

Kimberli Boswell
Tia Withers

UTAH (12)

Taeja Afalava Toleafoa
Christie Carpenter
Kimberly Dahl
Jennifer Hamson
Heather Hannemann
Jessica Jardine
Mariah Katoa
Kathryn LeCheminant
Kemi McFarland
Camilla Phillips
Hannah Robison
Casey Thurston

Cougars Start WCC Play

PROVO, Utah—Gearing up for the rematch, the BYU women's volleyball team will face Saint Mary's Thursday at 7 p.m. in the Smith Fieldhouse to open conference play.

"We're excited to start our inaugural season in the West Coast Conference," BYU head coach Shawn Olmstead said. "Saint Mary's is a wonderful volleyball program. It will be a good test for us come Thursday night."

The Cougars (11-3) rebounded after a loss to Cal State Fullerton for a 3-1 win against Cal State Northridge Saturday. Saint Mary's (6-6) comes to Provo after a 3-1 loss to Kansas State in the Saint Mary's Tournament Saturday. BYU defeated Kansas State in the Varney's Invitational Sept. 3 in a 3-0 sweep for the tournament title.

In the teams' last outing, Saint Mary's pulled away with a 3-0 (25-21, 25-22, 31-29) victory, causing a three-way tie for second place in the BYU Nike Invitational.

Leading the Cougars, opposite hitter Jennifer Hamson passed 200 season kills against CSUN, averaging 14.42 per match. The sophomore also has 130 digs at 2.77 per set and 52 blocks. Over the weekend, Hamson recorded her fifth double-double of the season with 16 kills and 13 digs against CSUN.

Junior libero Kendalyn Hartsock tied her career high of 25 digs against CSUN, setting a new season high and breaking the season record of 23 she set at Utah State four days before. Setter Heather Hannemann continues to be a strong presence on the court with 10.62 assists per game for a season total of 499. Hannemann contributes 2.43 digs per set.

With 78 blocks, Nicole Warner heads the BYU defense. Warner also put up 13 kills at .650 hit-

ting in the win against Utah State and recorded 17 total blocks in the last three matches.

Lauren Corp leads the Gael offense with 162 kills at 3.45 per set. During the last matchup against BYU, Corp recorded 13 kills and six digs. Corp is joined on offense by Gabby Jolly with 2.24 kills per set. Jolly also leads in blocking with .96 per set and Sarah Reams leads in digs with 3.70 per set.

Thursday is "Jersey Night" at Elaine Michaelis Court. Fans are encouraged to wear their favorite jersey.

Due to the Jimmer's All-Stars game at the Marriott Center Thursday night, the volleyball match will air on BYUtv at 10 p.m. that night. The match will still be streamed live online.



2011 Season Outlook

With five new recruits and a new head coach, the BYU women's volleyball team sets out to make its mark on a new conference in the 2011 season. Led by senior Christie Carpenter and junior Nicole Warner, the Cougars enter the new season ready to play with veteran experience and fresh talent.

"We're excited about the season," head coach Shawn Olmstead said. "The girls responded well during our double days in fall camp and we're eager to get out and start competing. They're effort during camp was great, so we're pleased and anxious to start this season."

Heading into the West Coast Conference, BYU is undefeated in its series' against four of the eight new conference foes, has a winning record against one and is tied with two. Four of this season's WCC members finished in the top 100 teams of 2010.

"This season we have good depth that we haven't had in the past, which gives us more options" Olmstead said. "We have returning experience at key positions and we anticipate those girls to excel and lead this group. The experience is a huge plus going forward and experience in matches is crucial."

BYU Athletics' new partnership with BYUtv will allow 12 of the 14 home matches to be aired on BYUtv.

Breakdown by Position:

Middle Blocker

In 2010, junior starter Nicole Warner ranked third in the Mountain West Conference for blocks and No. 40 in the nation with 1.32 per game and 162 total. Warner also contributed 205 kills and 503 attacks.

"With two years of experience already, Nicole is a great blocker," Olmstead said. "She has good ability to move side-to-side and she's be-

2011 BYU Women's Volleyball

coming more and more skilled at the other positions crucial to hers."

Kathryn LeCheminant contributed 33 kills and 23 blocks in her first year playing for the Cougars. Fellow sophomore Jessica Jardine totaled 37 kills, 142 attacks and 22 digs in her rookie season.

Kimberli Boswell rounds off the list of returning middle blockers after in seven matches last season.

The Cougars are adding freshman Mariah Katoa, who qualified for the Junior Olympics and took Layton High School to a region championship in 2008.

Outside Hitter

Senior outside hitter Christie Carpenter placed second on the team with 313 season kills and led the team with 1,074 attacks in 2010. Carpenter recorded 234 digs for the Cougars and 67 blocks.

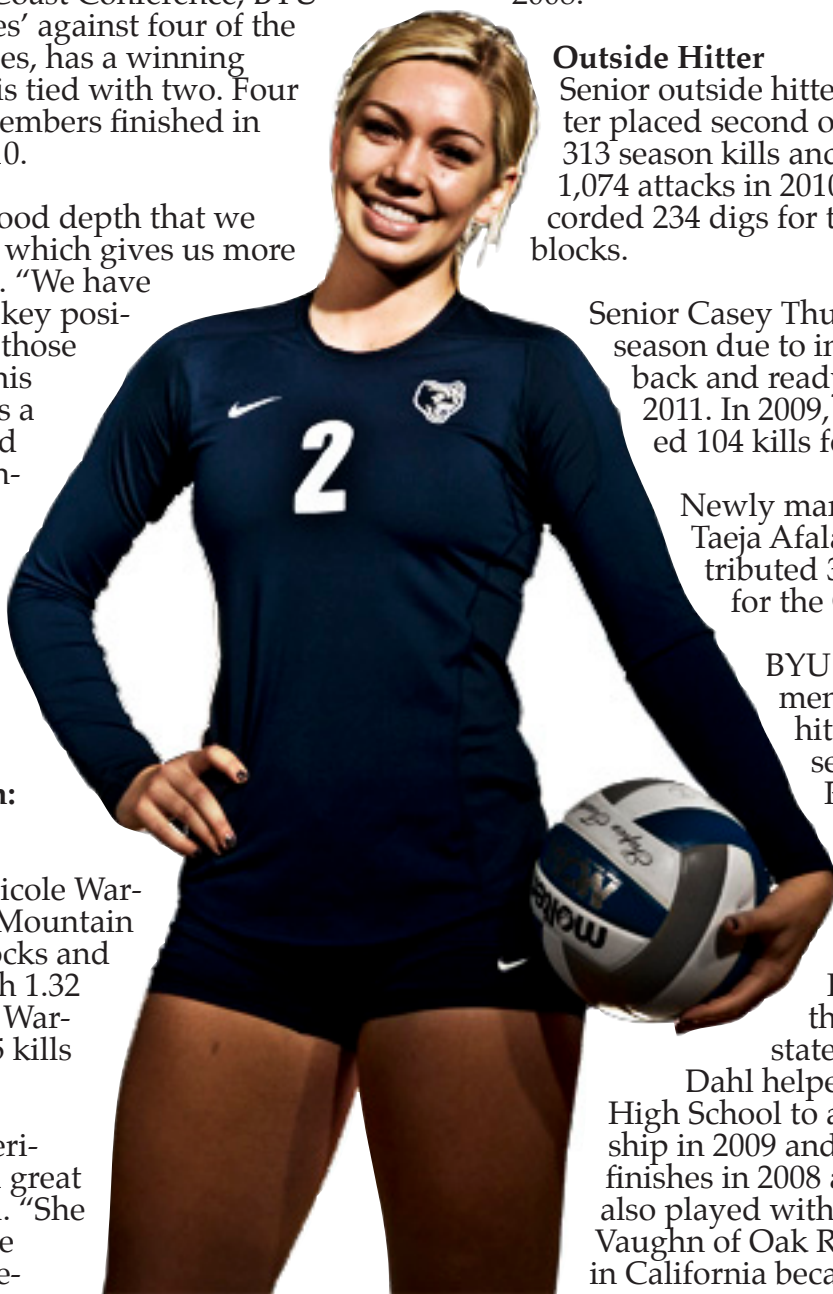
Senior Casey Thurston sat out last season due to injury, but will be back and ready for action in 2011. In 2009, Thurston recorded 104 kills for 1.58 per set.

Newly married sophomore Taea Afalava Toleafoa contributed 39 kills and 47 digs for the Cougars in 2010.

BYU adds three freshmen to the outside hitter position this season. Hannah

Robison was one of the top 100 recruits in the nation coming out of high school and helped Orem High School to a third-place finish in state in 2010. Kimberly

Dahl helped Pleasant Grove High School to a state championship in 2009 and second-place finishes in 2008 and 2010. She also played with Club Utah. Katie Vaughn of Oak Ridge High School in California became the all-time ca-



2011 Season Outlook

reer kill leader for the high school after the 2010 season with over 1,362 kills.

Opposite Hitter

At opposite hitter, BYU's returners totaled more than 100 kills each during the 2010 season. Sophomore Jennifer Hamson helped the Cougars to their 9-7 conference record with 644 attacks, 246 kills, 74 digs and 74 blocks.

"Jen has worked hard this off-season," Olmstead said. "With one year more experience, we anticipate she'll continue to grow and get better with each opportunity on the court."

Hamson is joined by senior Camilla Phillips, who totaled 116 kills and 49 blocks last season.

Setter

After backing up and learning from star setter Kiana Rogers last season, junior setter Heather Hannemann will take over for 2011. Hannemann had 71 assists, 17 digs and 13 attacks in the 2010 season.

Kemi McFarland joins the roster at setter after helping Salt Lake Community College to a 28-8 record and undefeated home record in 2010.

Defensive Specialist/Libero

As the Cougar Club Y Award's Walk-On of the Year, Kendalyn Hartsock led the team with 411 digs and added 48 assists last season. Hartsock averaged 3.92 digs per set during conference play, placing her third in the league for digs.

Sophomore Coriann Clark contributed 128 digs for BYU in 2010.

Joining the Cougars, freshman Tia Withers, a Beaverton, Ore. native, helped Sunset High School to back-to-back third-place finishes in state. Withers also competed in beach volleyball, winning five beach championships and two beach doubles championships.

Schedule

Five teams on this year's schedule qualified for the 2010 NCAA Division I Championships and four finished in the top 50 in the NCAA.

To kick off the season, the Cougars host No. 8 Illinois, UC Santa Barbara and WCC opponent Saint Mary's in the BYU Nike Invitational.

2011 BYU Women's Volleyball

Following a matchup with Weber State, the team heads to Kansas for the Kansas State Tournament to take on Idaho, Georgia Southern and Kansas State.

BYU finishes tournament play with the Utah Invitational in Salt Lake City, where the Cougars will face the Utes, UC Riverside and Eastern Michigan.

Matchups with BYU-Hawaii, Cal State Fullerton and Cal State Northridge round off pre-conference play.

League play starts at home with the season's second match against Saint Mary's. The Cougars are 2-2 against the Gaels, with their last matchup being in 2007.

BYU hits the road to compete against Loyola Marymount, looking to continue its undefeated record against Lions, followed by a matchup against 2010 WCC champion No. 20 San Diego. The Cougars will then host Santa Clara for their Dig Pink Match Oct. 6.

With a 12-6 series history against Pepperdine, the Cougars head to Malibu, Calif., to take on the Waves and continue the winning record.

Following the Pepperdine matchup, BYU meets Portland on the road for its first battle against the Pilots. The Cougars finish up the first half of conference play facing Gonzaga.

The Cougars welcome Pepperdine to Provo to begin the second half of conference play and end the season with back-to-back home matches against Gonzaga and Portland.

Matches Televised on BYUtv

Illinois	Aug. 26	5:30 p.m. MDT
UC Santa Barbara	Aug. 27	10 a.m. MDT
Saint Mary's	Aug. 27	8 p.m. MDT
Weber State	Aug. 30	7 p.m. MDT
BYU-Hawaii	Sept. 7	7 p.m. MDT
Saint Mary's	Sept. 22	7 p.m. MDT
Santa Clara	Oct. 6	7 p.m. MDT
Pepperdine	Oct. 20	7 p.m. MDT
Loyola Marymount	Nov. 3	7 p.m. MDT
San Francisco	Nov. 5	7 p.m. MDT
Gonzaga	Nov. 17	7 p.m. MDT
Portland	Nov. 19	7 p.m. MDT

ROSTER NOTES

DOUBLE-DIGIT OUTINGS

KILLS

PLAYER	TOTAL	HIGH
Christie Carpenter	3	17
Jennifer Hamson	12	20
Jessica Jardine	1	10
Katie Vaughn	3	14
Nicole Warner	2	15

DIGS

PLAYER	TOTAL	HIGH
Christie Carpenter	4	12
Jennifer Hamson	6	18
Heather Hannemann	4	17
Kendalyn Hartsock	14	25
Jessica Jardine	1	10
Tia Withers	4	15

BLOCKS

PLAYER	TOTAL	HIGH
--------	-------	------

DOUBLE-DOUBLES

Christie Carpenter (1)
vs. EMU (9/10) - 17 K and 12 D

Jennifer Hamson (5)
vs. UCSB (8/27) - 17 K and 18 D
vs. BYU-H (9/7) - 15 K and 10 D
vs. Utah (9/10) - 15 K and 11 D
vs. CSF (9/16) - 18 K and 13 D
vs. CSUN (9/17) - 16 K and 13 D

Heather Hannemann (4)
vs. Illinois (8/26) - 27 A and 15 D
vs. Saint Mary's (8/27) - 35 A and 10 D
vs. EMU (9/10) - 44 A and 17 D
vs. Utah (9/10) - 34 A and 10 D

WCC PRE-SEASON POLL

PL.	TEAM	VOTES	2010 WCC RECORD	OVERALL
1.	Pepperdine	7	11-3	20-8
2.	Saint Mary's	1	12-2	20-8
3.	San Diego	1	13-1	24-6
4.	Santa Clara		5-9	14-14
5.	Loyola Marymount		6-8	15-15
6.	BYU		9-7(MWC)	14-16
T7.	Portland		5-9	12-18
T7.	San Francisco		3-11	5-22
9.	Gonzaga		1-13	4-27

AVCA DIVISION I COACHES POLL (AS OF SEPT. 19, 2011)

RANK	TEAM (FIRST-PLACE VOTES)	TOTAL POINTS	RECORD	LAST WEEK
1	CALIFORNIA (58)	1498	13-0	1
2	STANFORD (1)	1424	8-1	2
3	ILLINOIS (1)	1378	11-0	3
4	WASHINGTON	1226	9-1	4
5	PENN STATE	1160	7-3	5
6	FLORIDA	1127	8-2	7
7	UCLA	1114	9-2	6
8	TEXAS	1032	6-3	8
9	MINNESOTA	1014	5-2	9
10	NEBRASKA	993	7-1	10
11	HAWAI'I	932	10-1	11
12	SOUTHERN CALIFORNIA	877	7-3	13
13	PURDUE	799	11-0	14
14	NORTHERN IOWA	708	12-1	15
15	OREGON	640	9-1	16
T16	IOWA STATE	586	9-2	12
T16	SAN DIEGO	586	13-0	17
18	MICHIGAN	558	12-0	18
19	PEPPERDINE	318	6-5	21
20	COLORADO STATE	254	6-3	19
T21	LONG BEACH STATE	200	6-4	24
T21	MIAMI (FL)	200	9-1	20
23	FLORIDA STATE	175	7-4	NR
24	OHIO STATE	150	10-3	25
25	OKLAHOMA	122	13-3	22

Class Breakdown

SENIOR (3)
Christie Carpenter
Casey Thurston
Camilla Phillips

Coriann Clark
Jennifer Hamson
Jessica Jardine
Kathryn LeCheminant
Kemi McFarland

JUNIOR (4)
Heather Hannemann
Kendalyn Hartsock
Nicole Warner

FRESHMAN (5)
Kimberly Dahl
Mariah Katoa
Hannah Robison
Katie Vaughn
Tia Withers

SOPHOMORE (7)
Taeja Afalava
Kimberli Boswell



Shawn Olmstead Head Women's Volleyball Coach

Shawn Olmstead was named head coach of the women's volleyball team in 2011. He entered his first season as an assistant coach at BYU in 2008, serving as the recruiting, video and defensive coordinator. With Olmstead as assistant coach, the Cougars recorded 43 victories.

Coaching Career

Olmstead came to BYU with four years of coaching experience, most recently as an assistant coach for two years at Utah State under former BYU men's volleyball assistant coach Grayson DuBose. While at Utah State, Olmstead served as the program's recruiting coordinator, putting together the second-best recruiting class in the Western Athletic Conference in 2007. He also was responsible for defensive game preparation, including breaking down opponent film and preparing scouting reports. His efforts helped the Aggies rank 25th nationally in blocks per game in 2007.

Prior to his stint at Utah State, Olmstead spent one year as an assistant coach at Cal Poly San Luis Obispo in San Luis Obispo, Calif., in 2005 where he also served as the recruiting coordinator as well as organizing team travel. He helped the Mustangs achieve a 19-6 overall record, improving from 5-24 the year prior to Olmstead's arrival.

Before coaching at Cal Poly, Olmstead spent one year as a volunteer assistant coach for the women's program at Utah Valley State College. He has also coached with IVA High Performance and at various volleyball camps.

Playing Career

Olmstead attended BYU and played libero for the men's volleyball program, helping the Cougars win National Championships in 2001 and 2004 along with a national runner-up finish in 2003. During his senior season in 2004, Olmstead recorded the third-most digs in a single season in school history and earned Mountain Pacific Sports Federation All-Tournament honors.

A native of Carpinteria, Calif., Olmstead prepped at Carpinteria High School where he earned All-CIF volleyball honors as both a junior and senior along with being named his league's Most Valuable Player during his senior season. He set a school record by recording 47 kills in a match.

Personal

Olmstead graduated from BYU with a degree in Spanish Education in 2005 along with a Sociology minor. He is married to the former Farrah Hofheins, and they have two daughters and a son.



BYU'S RECORD WHEN...

Facing ranked opponents	0-1
Facing unranked opponents	11-2
In three games	7-2
In four games	4-1
In five games	0-0
In first game of the match	10-4
In second game of the match	11-3
In third game of the match	9-3
In fourth game of the match	4-1
In fifth game of the match	0-0
Winning first game	10-0
Opponent wins first game	1-3
Recording more kills	8-0
Opponent records more kills	3-3
Opponent and BYU record equal number of kills	0-0
Recording higher hitting percentage	11-0
Opponent records higher hitting percentage	0-3
Opponent and BYU record equal hitting percentage	0-0
Hitting .300+	3-0
Opponent hits .300+	0-0
Three or more Cougars records 10+ kills	1-0
Three or more opponents record 10+ kills	0-0
Out-blocking opponent	8-2
Opponent out-blocks BYU	3-1
Opponent and BYU record equal number of blocks	0-0
Recording 12.0+ blocks	2-1
Opponent records 12.0+ blocks	1-0
Recording more digs	9-1
Opponent records more digs	1-2
Opponent and BYU record equal number of digs	1-0
In August	2-2
In September	9-1
In October	0-0
In November	0-0
In December	0-0
Last 10 matches/Current Streak	9-1
Longest win streak in 2011	9
Playing on Tuesday	2-0
Playing on Wednesday	1-0
Playing on Thursday	0-0
Playing on Friday	3-2
Playing on Saturday	5-1

2011 BYU TEAM HIGHS

KILLS

(3 games)	49 vs. BYU-H (9/7)
(4 games)	56 vs. GSU (9/2)
(5 games)	00

ATTEMPTS

(3 games)	127 vs. Utah State (9/13)
(4 games)	158 vs. CSF (9/16)
(5 games)	00

ASSISTS

(3 games)	46 vs. BYU-H (9/7)
(4 games)	51 vs. GSU (9/2) vs. CSF (9/16)
(5 games)	00

DIGS

(3 games)	71 vs. Utah State (9/13)
(4 games)	75 vs. EMU (9/10)
(5 games)	00

BLOCKS

(3 games)	12.5 vs. Utah (9/10)
(4 games)	16.0 vs. CSF (9/16)
(5 games)	00

2011 BYU INDIVIDUAL HIGHS

KILLS

(3 games)	20, J. Hamson vs. Saint Mary's (8/27)
(4 games)	18, J. Hamson vs. CSF (9/16)
(5 games)	00

ATTEMPTS

(3 games)	46, J. Hamson vs. Saint Mary's (8/27)
(4 games)	48, J. Hamson vs. CSF (9/16)
(5 games)	00

ASSISTS

(3 games)	42, H. Hannemann vs. BYU-H (9/7)
(4 games)	48, H. Hannemann vs. GSU (9/2) H. Hannemann vs. CSF (9/16)
(5 games)	00

DIGS

(3 games)	23, K. Hartsock vs. Utah State (9/13)
(4 games)	25, K. Hartsock vs. CSF (9/16)
(5 games)	00

BLOCKS

(3 games)	9, N. Warner vs. Utah (9/10)
(4 games)	9, N. Warner vs. EMU (9/10)
(5 games)	00

2010 SEASON/CAREER HIGHS

NO.	NAME	KILLS	ATTEMPTS	HIT % (MIN. 8 ATT.)	DIGS	BLOCK ASSISTS	BLOCK SOLOS	TOTAL BLOCKS	SERVICE ACES	ASSISTS
1	Katie Vaughn	14 (UI, 9/2/11)	31 (UI, 9/2/11)	.421 (BYUH, 9/7/11)	3 (GSU, 9/2/11)	4 (GSU, 9/2/11)	1 (WSU, 8/30/11)	4 (GSU, 9/2/11)	--	--
		14 (UI, 9/2/11)	31 (UI, 9/2/11)	.421 (BYUH, 9/7/11)	3 (GSU, 9/2/11)	4 (GSU, 9/2/11)	1 (WSU, 8/30/11)	4 (GSU, 9/2/11)	--	--
2	Heather Hannemann	3 (UCSB, 8/27/11)	7 (GSU, 9/2/11)	.333 (UCSB, 8/27/11)	17 (EMU, 9/10/11)	5 (EMU, 9/10/11)	1 (Utah, 9/10/11)	5 (EMU, 9/10/11)	2 (four times)	48 (two times)
		3 (UCSB, 8/27/11)	7 (GSU, 9/2/11)	.333 (UCSB, 8/27/11)	17 (EMU, 9/10/11)	5 (EMU, 9/10/11)	1 (two times)	5 (EMU, 9/10/11)	2 (five times)	48 (two times)
4	Kathryn LeCheminant	7 (BYUH, 9/7/11)	17 (EMU, 9/10/11)	.636 (BYUH, 9/7/11)	3 (UCSB, 8/27/11)	4 (six times)	2 (UCSB, 8/27/11)	6 (UCSB, 8/27/11)	--	1 (GSU, 9/2/11)
		10 (CP, 9/4/10)	21 (CP, 9/4/10)	.636 (BYUH, 9/7/11)	3 (UCSB, 8/27/11)	6 (two times)	2 (UCSB, 8/27/11)	6 (three times)	--	1 (GSU, 9/2/11)
5	Mariah Katoa	--	--	--	--	--	--	--	--	--
		--	--	--	--	--	--	--	--	--
6	Kendalyn Hartssock	--	2 (Utah, 9/10/11)	--	25 (CSUN, 9/17/11)	--	--	--	2 (GSU, 9/2/11)	4 (UCSB, 8/27/11)
		1 (HOU, 9/11/10)	2 (two times)	--	25 (UNM, 11/20/10)	--	--	--	2 (three times)	5 (UNM, 11/20/10)
10	Camilla Phillips	--	2 (EMU, 9/10/11)	--	--	--	--	--	--	--
		14 (CSU, 11/14/09)	34 (Utah, 10/23/09)	.500 (CSU, 11/14/09)	5 (NDSU, 9/29/09)	7 (UVU, 10/27/09)	--	7 (UVU, 10/27/09)	--	1 (four times)
11	Coriann Clark	--	--	--	--	--	--	--	--	--
		3 (MT, 8/28/10)	13 (MT, 8/28/10)	.154 (MT, 8/28/10)	13 (UNM, 11/20/10)	--	--	--	1 (Ill, 8/27/10)	5 (UNLV, 11/11/10)
12	Jessica Jardine	10 (UCSB, 8/27/11)	28 (ILL, 8/26/11)	.286 (UCSB, 8/27/11)	10 (SMC, 8/27/11)	2 (SMC, 8/27/11)	--	2 (SMC, 8/27/11)	1 (three times)	2 (ILL, 8/26/11)
		10 (UCSB, 8/27/11)	29 (Wyo, 9/25/10)	.286 (UCSB, 8/27/11)	10 (SMC, 8/27/11)	2 (two times)	--	2 (two times)	2 (Wyo, 9/25/10)	2 (ILL, 8/26/11)
13	Kimberly Dahl	--	--	--	--	--	--	--	--	--
		--	--	--	--	--	--	--	--	--
14	Christie Carpenter	17 (EMU, 9/10/11)	44 (EMU, 9/10/11)	.417 (WSU, 8/30/11)	12 (three times)	5 (Utah, 9/10/11)	1 (EMU, 9/10/11)	5 (Utah 9/10/11)	3 (Utah, 9/10/11)	3 (GSU, 9/2/11)
		21 (Wyo, 10/17/09)	57 (two times)	.417 (WSU, 8/30/11)	15 (two times)	7 (three times)	1 (nine times)	8 (CSU, 9/24/10)	3 (three times)	3 (GSU, 9/2/11)
15	Nicole Warner	15 (GSU, 9/2/11)	20 (USU, 9/13/11)	.737 (GSU, 9/2/11)	5 (GSU, 9/2/11)	9 (Utah, 9/10/11)	1 (three times)	9 (two times)	1 (two times)	2 (UI, 9/2/11)
		15 (GSU, 9/2/11)	31 (CP, 9/4/10)	.750 (WSU, 10/12/10)	6 (Wyo, 10/17/09)	12 (Wyo, 11/24/10)	2 (two times)	11 (LMU, 9/10/10)	3 (two times)	2 (UI, 9/2/11)
16	Hannah Robison	--	--	--	--	--	--	--	--	--
		--	--	--	--	--	--	--	--	--
17	Tia Withers	--	4 (UCSB, 8/27/11)	--	15 (CSF, 9/16/11)	--	--	--	2 (two times)	3 (UCSB, 8/27/11)
		--	4 (UCSB, 8/27/11)	--	15 (CSF, 9/16/11)	--	--	--	2 (two times)	3 (UCSB, 8/27/11)
18	Kemi McFarland	--	--	--	--	--	--	--	--	--
		--	--	--	--	--	--	--	--	--
19	Jennifer Hamson	20 (SMC, 8/27/11)	48 (CSF, 9/16/11)	.591 (Utah, 9/10/11)	18 (UCSB, 8/27/11)	7 (USU, 9/13/11)	1 (two times)	7 (USU, 9/13/11)	5 (BYUH, 9/7/11)	1 (three times)
		20 (SMC, 8/27/11)	51 (LMU, 9/10/10)	.647 (UVU, 10/9/10)	18 (UCSB, 8/27/11)	7 (three times)	1 (six times)	8 (UNLV, 10/16/10)	5 (BYUH, 9/7/11)	2 (LMU, 9/10/10)
20	Casey Thurston	7 (Utah, 9/10/11)	19 (two times)	.500 (Utah, 9/10/11)	2 (ILL, 8/26/11)	4 (CSF, 9/16/11)	--	4 (CSF, 9/16/11)	--	--
		13 (SDSU, 9/17/09)	30 (SDSU, 11/17/09)	.500 (three times)	3 (UNLV, 10/29/09)	4 (two times)	1 (two times)	5 (SDSU, 9/17/09)	--	1 (two times)
21	Taeja Afalava Toleafoa	--	--	--	--	--	--	--	--	--
		10 (SC, 8/28/10)	39 (SC, 8/28/10)	.364 (SDSU, 11/6/10)	19 (SC, 8/28/10)	2 (Neb, 9/3/10)	--	2 (Neb, 9/3/10)	2 (Ill, 8/27/10)	1 (two times)
22	Kimberli Boswell	--	1 (EMU, 9/10/11)	--	--	2 (three times)	--	2 (three times)	--	--
		6 (AFA, 11/13/10)	17 (AFA, 11/13/10)	.118 (AFA, 11/13/10)	1 (two times)	5 (AFA, 11/13/10)	1 (AFA, 11/13/10)	6 (AFA, 11/13/10)	2 (AFA, 10/14/10)	--

MATCH-BY-MATCH STARTERS

MATCH	SETTER	LIBERO	OPPOSITE	OUT. HITTER	OUT. HITTER	MID. BLOCKER	MID. BLOCKER
Illinois (8/26)	H. Hannemann	K. Hartsock	J. Hamson	C. Thurston	J. Jardine	N. Warner	K. LeCheminant
UCSB (8/27)	H. Hannemann	K. Hartsock	J. Hamson	C. Thurston	J. Jardine	N. Warner	K. LeCheminant
Saint Mary's (8/27)	H. Hannemann	K. Hartsock	J. Hamson	K. Vaughn	J. Jardine	N. Warner	K. LeCheminant
WSU (8/30)	H. Hannemann	K. Hartsock	J. Hamson	K. Vaughn	J. Jardine	N. Warner	K. LeCheminant
Idaho (9/2)	H. Hannemann	K. Hartsock	J. Hamson	K. Vaughn	C. Carpenter	N. Warner	K. LeCheminant
Georgia Southern (9/2)	H. Hannemann	K. Hartsock	J. Hamson	K. Vaughn	C. Carpenter	N. Warner	K. LeCheminant
Kansas State (9/3)	H. Hannemann	K. Hartsock	J. Hamson	K. Vaughn	C. Carpenter	N. Warner	K. LeCheminant
BYU-Hawaii (9/7)	H. Hannemann	K. Hartsock	J. Hamson	K. Vaughn	C. Carpenter	N. Warner	K. LeCheminant
UC Riverside (9/9)	H. Hannemann	K. Hartsock	J. Hamson	T. Withers (DS)	C. Carpenter	N. Warner	K. LeCheminant
Eastern Michigan (9/10)	H. Hannemann	K. Hartsock	J. Hamson	T. Withers (DS)	C. Carpenter	N. Warner	K. LeCheminant
Utah (9/10)	H. Hannemann	K. Hartsock	J. Hamson	K. Vaughn	C. Carpenter	N. Warner	K. LeCheminant
Utah State (9/13)	H. Hannemann	K. Hartsock	J. Hamson	T. Withers (DS)	C. Carpenter	N. Warner	K. LeCheminant
CSF (9/16)	H. Hannemann	K. Hartsock	J. Hamson	T. Withers (DS)	C. Carpenter	N. Warner	K. LeCheminant
CSUN (9/17)	H. Hannemann	K. Hartsock	J. Hamson	T. Withers (DS)	C. Carpenter	N. Warner	K. LeCheminant

MATCH-BY-MATCH STAT LEADERS

OPPONENT	KILLS	ATTEMPTS	ASSISTS	ACES	DIGS	BLOCKS
Illinois (8/26)	17 J. Hamson	42 J. Hamson	27 H. Hannemann	1 J. Jardine	15 H. Hannemann	5 K. LeCheminant
UCSB (8/27)	17 J. Hamson	34 J. Hamson	36 H. Hannemann	2 J. Hamson	20 K. Hartsock	6 LeCheminant/Warner
Saint Mary's (8/27)	20 J. Hamson	46 J. Hamson	35 H. Hannemann	--	10 Hannemann/Jardine/Hartsock	5 J. Hamson
WSU (8/30)	11 J. Hamson	26 J. Hamson	33 H. Hannemann	2 T. Withers	10 K. Hartsock	6 N. Warner
Idaho (9/2)	14 K. Vaughn	31 K. Vaughn	26 H. Hannemann	2 H. Hannemann	12 Hartsock/Carpenter	6 N. Warner
Georgia Southern (9/2)	15 N. Warner	31 J. Hamson	48 H. Hannemann	2 Hamson/Withers	17 K. Hartsock	6 N. Warner
Kansas State (9/3)	17 J. Hamson	32 J. Hamson	33 H. Hannemann	2 Hannemann/Hartsock	15 K. Hartsock	6 N. Warner
BYU-Hawaii (9/7)	15 J. Hamson	33 J. Hamson	42 H. Hannemann	5 J. Hamson	19 K. Hartsock	2 K. LeCheminant
UC Riverside (9/9)	8 J. Hamson/C. Carpenter	23 C. Carpenter	23 H. Hannemann	2 C. Carpenter	12 J. Hamson	6 N. Warner
Eastern Michigan (9/10)	17 C. Carpenter	44 C. Carpenter	44 H. Hannemann	--	21 K. Hartsock	9 N. Warner
Utah (9/10)	15 H. Hamson	25 C. Carpenter	34 H. Hannemann	3 C. Carpenter	14 K. Hartsock	9 N. Warner
Utah State (9/13)	13 J. Hamson/N. Warner	34 C. Carpenter	36 H. Hannemann	2 H. Hannemann	23 K. Hartsock	7 J. Hamson
CSF (9/16)	18 J. Hamson	48 J. Hamson	48 H. Hannemann	3 J. Hamson	17 K. Hartsock	8 N. Warner
CSUN (9/17/11)	16 J. Hamson	39 J. Hamson	34 H. Hannemann	2 J. Hamson	25 K. Hartsock	3 Warner/LeCheminant

Box Scores

Match 13: BYU vs. Cal State Fullerton

Volleyball Box Score

BYU vs Cal State Fullerton (Sep 16, 2011 at Fullerton, CA)

##	BYU	SP	K	E	TA	PCT	A	SA	SE	RE	DIG	BS	BA	BE	BHE
2	HANNEMANN, Heather	4	1	1	4	.000	48	0	0	0	6	0	2	0	0
4	LECHEMINANT, Kathryn	4	8	2	17	.353	0	0	0	1	1	0	5	0	0
14	CARPENTER, Christie	4	13	1	38	.316	0	2	2	3	4	0	4	0	0
15	WARNER, Nicole	4	7	4	19	.158	0	0	1	0	2	0	8	3	0
17	WITHERS, Tia	4	0	0	3	.000	0	1	1	0	15	0	0	0	0
19	HAMSON, Jennifer	4	18	4	48	.292	0	3	1	0	13	1	5	0	0
1	VAUGHN, Katie	2	2	0	4	.500	0	0	0	0	1	0	0	0	0
6	HARTSOCK, Kendalyn	4	0	0	0	.000	3	1	1	1	17	0	0	0	0
12	JARDINE, Jessica	2	0	2	5	-.400	0	0	0	1	0	0	0	0	0
20	THURSTON, Casey	4	4	2	19	.105	0	0	0	0	1	0	4	1	0
22	BOSWELL, Kimberli	1	0	0	1	.000	0	0	0	0	0	0	2	0	0
	Totals.....	4	53	16	158	.234	51	7	6	6	60	1	30	4	0

TEAM ATTACK PER SET

Set	K	E	TA	Pct
1	14	3	34	.324
2	12	6	37	.162
3	15	2	42	.310
4	12	5	45	.156

TOTAL TEAM BLOCKS: 16.0

SET SCORES

BYU	1	2	3	4	TEAM RECORDS
BYU	22	22	26	23	10-3
Cal State Fullerton	25	25	24	25	5-5

##	Cal State Fullerton	SP	K	E	TA	PCT	A	SA	SE	RE	DIG	BS	BA	BE	BHE
1	Ragan, Andrea	4	1	3	6	-.333	53	0	0	0	12	0	0	0	0
3	Best, Leah	4	9	2	18	.389	0	0	0	0	1	1	1	1	0
4	Neto, Kayla	4	20	12	55	.145	1	3	3	2	15	0	1	0	0
11	Maurer, Leah	4	7	2	24	.208	1	0	1	1	2	0	2	0	0
12	Dewberry, Gabrielle	4	3	2	7	.143	4	1	0	0	11	0	1	0	0
22	Moreland, Bre	4	18	5	39	.333	1	1	1	4	17	0	1	0	0
2	Yamate, Amanda	4	0	0	0	.000	4	1	0	0	21	0	0	0	0
7	Miraldi, Abbie	1	0	0	1	.000	0	0	0	0	1	0	0	0	0
8	Moffatt, Elle	1	1	0	1	1.000	1	0	0	0	1	0	0	0	0
18	Edmond, Jennifer	4	12	2	18	.556	0	0	0	0	4	0	0	0	0
	Totals.....	4	71	28	169	.254	65	6	5	7	84	1	6	1	0

TEAM ATTACK PER SET

Set	K	E	TA	Pct
1	17	4	34	.382
2	15	6	35	.257
3	20	8	51	.235
4	19	10	49	.184

TOTAL TEAM BLOCKS: 4.0

Site: Fullerton, CA (Titan Gym)

Date: Sep 16, 2011 Attend: 387 Time: 2:04

Referees: Marvin Hall, Stephanie Cruz

Match 15: BYU vs. Saint Mary's

2011 BYU Women's Volleyball

Match 14: BYU vs. Cal State Northridge

Volleyball Box Score

BYU vs Cal State Northridge (Sep 17, 2011 at Northridge, Calif.)

##	BYU	SP	K	E	TA	PCT	A	SA	SE	RE	DIG	BS	BA	BE	BHE
2	HANNEMANN, Heather	4	0	0	1	.000	34	1	1	0	7	1	2	0	0
4	LECHEMINANT, Kathryn	4	6	2	12	.333	0	0	0	1	2	0	3	0	0
14	CARPENTER, Christie	4	8	4	26	.154	1	0	0	1	10	0	1	0	0
15	WARNER, Nicole	4	7	1	14	.429	1	0	2	0	3	1	3	0	0
19	HAMSON, Jennifer	4	16	5	39	.282	1	2	0	0	13	0	2	0	0
20	THURSTON, Casey	3	2	4	19	-.105	0	0	0	1	0	0	0	0	0
1	VAUGHN, Katie	2	4	3	13	.077	0	0	0	1	0	0	1	0	0
6	HARTSOCK, Kendalyn	4	0	0	0	.000	2	1	0	2	25	0	0	0	0
12	JARDINE, Jessica	1	0	0	0	.000	0	0	0	1	0	0	0	0	0
17	WITHERS, Tia	4	0	0	0	.000	0	0	0	1	7	0	0	0	0
	Totals.....	4	43	19	124	.194	39	4	4	7	67	2	12	0	0

TEAM ATTACK PER SET

Set	K	E	TA	Pct
1	13	2	30	.367
2	14	6	33	.242
3	4	6	30	-.067
4	12	5	31	.226

TOTAL TEAM BLOCKS: 8.0

SET SCORES

BYU	1	2	3	4	TEAM RECORDS
BYU	25	25	16	25	11-3
Cal State Northridge	15	22	25	17	6-6

##	Cal State Northridge	SP	K	E	TA	PCT	A	SA	SE	RE	DIG	BS	BA	BE	BHE
1	Hinger, Casey	4	8	3	22	.227	0	1	3	0	2	0	4	0	0
9	Allen, Natalie	4	7	8	33	-.030	2	2	3	2	11	1	2	0	0
10	Haina, Mahina	4	13	5	31	.258	0	0	0	0	1	0	3	0	0
14	Graff, Britney	4	6	5	27	.037	0	0	1	1	5	0	0	0	0
15	Kaul, Sam	4	4	3	15	.067	1	0	0	0	0	0	4	1	0
18	Gedryn, Sydney	4	4	0	10	.400	39	2	3	0	2	0	5	0	0
3	McFarland, Monica	4	0	0	0	.000	1	0	2	0	10	0	0	0	0
4	Counts, Mariah	3	0	0	1	.000	0	1	2	0	3	0	0	0	0
6	Ortiz, Cindy	4	0	0	0	.000	2	1	3	1	20	0	0	0	0
8	Pataria, Puneet	1	2	1	5	.200	0	0	0	0	0	0	0	0	0
16	Siljegovic, Una	1	1	1	2	.000	0	0	0	0	0	0	0	0	0
	Totals.....	4	45	26	146	.130	45	7	17	4	54	1	18	1	0

TEAM ATTACK PER SET

Set	K	E	TA	Pct
1	11	7	38	.105
2	14	5	32	.281
3	10	8	42	.048
4	10	6	34	.118

TOTAL TEAM BLOCKS: 10.0

Site: Northridge, Calif. (The Matadome)

Date: Sep 17, 2011 Attend: 262 Time: 1:51

Referees: Marvin Hall, Lena Gustafson

Match 16: BYU vs. Loyola Marymount

BYU Women's Volleyball

2011 Season Stats: All Matches

BYU Cougar Volleyball 2011 BYU Combined Team Statistics (as of Sep 19, 2011) All matches

RECORD:	OVERALL	HOME	AWAY	NEUTRAL
ALL GAMES	11-3	3-2	4-1	4-0
CONFERENCE	0-0	0-0	0-0	0-0
NON-CONFERENCE	11-3	3-2	4-1	4-0

#	Player	sp	Attack					Set		Serve			Dig			Blocking					points	
			k	k/s	e	ta	pct	a	a/s	sa	se	sa/s	re	dig	dig/s	bs	ba	total	blk/s	be		bhe
15	WARNER, Nicole	47	94	2.00	29	201	.323	6	0.13	2	13	0.04	0	22	0.47	3	75	78	1.66	10	0	-
19	HAMSON, Jennifer	47	202	4.30	55	462	.318	3	0.06	17	27	0.36	0	130	2.77	2	50	52	1.11	1	0	-
4	LECHEMINANT, Kathy	47	63	1.34	22	142	.289	1	0.02	0	0	0.00	3	13	0.28	6	43	49	1.04	2	1	-
14	CARPENTER, Christie	36	99	2.75	36	298	.211	10	0.28	8	4	0.22	15	90	2.50	1	20	21	0.58	4	0	-
1	VAUGHN, Katie	35	77	2.20	36	216	.190	0	0.00	0	0	0.00	11	11	0.31	1	18	19	0.54	4	0	-
2	HANNEMANN, Heather	47	15	0.32	8	49	.143	499	10.62	13	8	0.28	0	114	2.43	2	28	30	0.64	2	1	-
20	THURSTON, Casey	18	31	1.72	16	130	.115	0	0.00	0	0	0.00	3	7	0.39	0	9	9	0.50	1	0	-
12	JARDINE, Jessica	16	29	1.81	24	92	.054	5	0.31	3	4	0.19	5	26	1.62	0	4	4	0.25	1	0	-
6	HARTSOCK, Kendalyn	47	0	0.00	0	5	.000	29	0.62	4	8	0.09	14	223	4.74	0	0	0	0.00	0	5	-
17	WITHERS, Tia	47	0	0.00	1	13	-.077	8	0.17	9	7	0.19	4	98	2.09	0	0	0	0.00	0	0	-
22	BOSWELL, Kimberli	5	0	0.00	1	2	-.500	0	0.00	0	0	0.00	0	0	0.00	0	6	6	1.20	0	0	-
10	PHILLIPS, Camilla	1	0	0.00	2	2	-1.000	0	0.00	0	0	0.00	0	0	0.00	0	0	0	0.00	0	0	-
	TEAM	-	-	-	-	-	-	-	-	-	-	-	2	-	-	-	-	-	-	-	-	-
	BYU	47	610	12.98	230	1612	.236	561	11.94	56	71	1.19	57	734	15.62	15	253	141.5	3.01	25	7	-
	Opponents	47	575	12.23	345	1734	.133	542	11.53	57	106	1.21	56	681	14.49	6	173	92.5	1.97	31	4	-

Team Statistics	BYUW11	OPP
ATTACK		
Kills	610	575
Errors	230	345
Total Attacks	1612	1734
Attack Pct	.236	.133
Kills/Set	13.0	12.2
SET		
Assists	561	542
Assists/Set	11.9	11.5
SERVE		
Aces	56	57
Errors	71	106
Aces/Set	1.2	1.2
SERVE RECEPTIONS		
Errors	57	56
Errors/Set	1.2	1.2
DEFENSE		
Digs	734	681
Digs/Set	15.6	14.5
BLOCKING		
Block Solo	15	6
Block Assist	253	173
Total Blocks	141.5	92.5
Blocks/Set	3.0	2.0
Block Errors	25	31
Ball handling errors	7	4
ATTENDANCE		
Total	7082	4067
Dates/Avg Per Date	5/1416	5/813
Neutral site #/Avg	4/58	
Current win streak	1	-
Home win streak	2	-

Date	Opponent	Score	Score by set	Att.
Aug 26	#8 ILLINOIS	L 0-3	26-28,22-25,16-25	2741
Aug 27	UC SANTA BARBARA	w 3-1	18-25,25-14,25-17,25-9	265
Aug 27	SAINT MARY'S	L 0-3	21-25,22-25,29-31	1040
Aug 30	WSU	w 3-0	25-14,25-21,28-26	1405
Sep 02	vs UI	w 3-0	25-16,25-17,25-21	0
Sep 02	vs Georgia Southern	w 3-1	25-20,25-22,23-25,25-9	0
Sep 03	at Kansas State	w 3-0	25-23,25-19,25-23	1195
Sep 07	BYU-HAWAII	w 3-0	25-19,25-15,25-20	1631
Sep 09	vs UC Riverside	w 3-0	25-20,25-14,25-16	135
Sep 10	vs Eastern Michigan	w 3-1	25-19,25-23,16-25,25-8	97
Sep 10	at Utah	w 3-0	25-20,25-17,25-14	1010
Sep 13	at Utah State	w 3-0	25-22,25-21,25-19	1213
Sep 16	at Cal State Fullerton	L 1-3	22-25,22-25,26-24,23-25	387
Sep 17	at Cal State Northridge	w 3-1	25-15,25-22,16-25,25-17	262

Record in 3-set matches: 7-2
Record in 4-set matches: 4-1
Record in 5-set matches: 0-0