



BYU Women's Volleyball

Week 2: Kansas State Invitational

2011 QUICK FACTS

UNIVERSITY INFORMATION

Location Provo, Utah 84602
 Elevation 4,553 feet
 Enrollment 33,278(Daytime)
 Founded October 15, 1875
 Owned: The Church of Jesus Christ of Latter-day Saints
 Nickname Cougars
 Mascot Cosmo
 Colors Dark blue and white
 Conference West Coast Conference
 Arena Smith Fieldhouse (5,000) wood floor
 BYU President Cecil O. Samuelson (Utah, 1970)
 Athletics Director Tom Holmoe (BYU, 1983)

VOLLEYBALL INFORMATION

Head Coach Shawn Olmstead (BYU, 2005)
 Office Phone 801-422-2808
 Assistant Coaches Heather Olmstead (Utah State, 2001)
 Emillie Toone (Utah, 2009)
 Olmstead Record at BYU: 2-2
 Olmstead Career Record Same
 BYU's All-Time Record: 1,062-326-5(.772)
 2010 Record 14-16
 2010 MWC Record 9-7(4th)
 2010 NCAA None
 2010 Final Ranking No.8 6
 Starters Returning/Lost 4/3
 Letterwinners Returning/Lost 8/4
 Other Players Returning/Lost 4/2
 Newcomers 6

ATHLETIC COMMUNICATIONS

Primary Volleyball Contact Rachel Hawkins
 Phone 801-422-8999
 Cell 801-380-9668
 E-mail wvolleyball_sid@byu.edu
 Secondary Volleyball Contact Kyle Chilton
 Phone 801-422-4909
 E-mail kyle_chilton@byu.edu
 Homepage www.byucougars.com
 Pressrow Phone 520-227-7720
 Mailing Address BYU Athletic Communications
 30 Smith Fieldhouse
 Provo, Utah 84602

QUICK REFERENCE

BYU 2011 Record: 2-2
 BYU WCC Record: 0-0

2011 BYU WOMEN'S VOLLEYBALL SCHEDULE

Date	Opponent	Site	Time/Result
Aug. 23	Blue and White Match	PROVO, UT	5 p.m.
Aug. 26-27	BYU Nike Invitational	PROVO, UT	
Aug. 26	No. 8 Illinois		L, 3-0
Aug. 27	UC Santa Barbara		W, 3-1
Aug. 27	Saint Mary's		L, 3-0
Aug. 30	Weber State	PROVO, UT	W, 3-0
Sept. 2-3	Kansas State Tournament	Manhattan, KS	
Sept. 2	Idaho		10 a.m.
Sept. 2	Georgia Southern		5 p.m.
Sept. 3	Kansas State		2 p.m.
Sept. 7	BYU-Hawaii	PROVO, UT	7 p.m.
Sept. 9-10	Utah Invitational	Salt Lake City, UT	
Sept. 9	UC Riverside		5 p.m.
Sept. 10	Eastern Michigan		10 a.m.
Sept. 10	Utah		7 p.m.
Sept. 13	Utah State	Logan, UT	7 p.m.
Sept. 16	Cal State Fullerton	Fullerton, CA	7 p.m.
Sept. 17	Cal State Northridge	Northridge, CA	1 p.m.
Sept. 22	Saint Mary's*	PROVO, UT	7 p.m.
Sept. 29	Loyola Marymount*	Los Angeles, CA	7 p.m.
Oct. 1	San Diego*	San Diego, CA	1 p.m.
Oct. 6	Santa Clara*-Dig Pink Match	PROVO, UT	7 p.m.
Oct. 8	Pepperdine*	Malibu, CA	1 p.m.
Oct. 15	Portland*	Portland, OR	1 p.m.
Oct. 17	Gonzaga*	Spokane, WA	7 p.m.
Oct. 20	Pepperdine*	PROVO, UT	7 p.m.
Oct. 22	San Diego*	PROVO, UT	7 p.m.
Oct. 27	San Francisco*	San Francisco, CA	6 p.m.
Nov. 3	Loyola Marymount*	PROVO, UT	7 p.m.
Nov. 5	San Francisco*	PROVO, UT	7 p.m.
Nov. 10	Saint Mary's*	Moraga, CA	7 p.m.
Nov. 17	Gonzaga*	PROVO, UT	7 p.m.
Nov. 19	Portland*	PROVO, UT	7 p.m.

* denotes West Coast Conference matches.

** all times listed are local to site and subject to change.

2011 NUMERICAL ROSTER

No.	Name	Pos.	Ht.	Cl.	Exp.	Hometown (Previous School)
1	Katie Vaughn	OH	6-2	FR	HS	El Dorado Hills, Calif. (Oak Ridge HS)
2	Heather Hannemann	S	5-8	JR	HS	Alpine, Utah (Lone Peak HS)
4	Kathryn LeCheminant	MB	6-2	SO	RS	Layton, Utah (Layton HS)
5	Mariah Katoa	MB	6-0	FR	HS	Layton, Utah (Layton HS)
6	Kendalyn Hartsock	L	5-6	JR	HS	Kalispell, Mont. (Flathead HS)
7	Hannah Robison	OH	6-0	FR	HS	Orem, Utah (Orem HS)
10	Camilla Phillips	OH/RS	5-11	SR	TR	South Jordan, Utah (Salt Lake CC)
11	Coriann Clark	DS/L	5-10	SO	HS	Bozeman, Mont. (Bozeman HS)
12	Jessica Jardine	OH	6-1	SO	HS	American Fork, Utah (American Fork HS)
13	Kimberly Dahl	OH	6-0	FR	HS	Pleasant Grove, Utah (Pleasant Grove HS)
14	Christie Carpenter	OH	6-1	SR	1L	Cedar Hills, Utah (Lone Peak HS)
15	Nicole Warner	MB	6-2	JR	RS	Rigby, Idaho (Rigby HS)
17	Tia Withers	DS/L	5-9	FR	HS	Beaverton, Ore. (Sunset HS)
18	Kemi McFarland	S	6-1	SO	TR	Pleasant Grove, Utah (SLCC)
19	Jennifer Hamson	RS	6-6	SO	HS	Pleasant Grove, Utah (Pleasant Grove HS)
20	Casey Thurston	OH	6-1	SR	1L	West Valley City, Utah (Granger HS)
21	Taeja Afalava Toleafoa	DS/OH	5-11	SO	HS	South Jordan, Utah (Bingham HS)
22	Kimberli Boswell	MB/RS	6-2	SO	HS	Aloha, Ore. (Aloha HS)

Head Coach: Shawn Olmstead (BYU 2005) – First Season

Assistant Coaches: Heather Olmstead, Emillie Toone

Trainer: Dan Graham

Director of Volleyball Operations: Giuseppe Vinci

2011 ALPHABETICAL ROSTER

Name	No.	Pos.
Kimberli Boswell	22	MB/RS
Christie Carpenter	14	OH
Coriann Clark	11	DS/L
Kimberly Dahl	13	OH
Jennifer Hamson	19	RS
Heather Hannemann	2	S
Kendalyn Hartsock	6	L
Jessica Jardine	12	OH
Mariah Katoa	5	MB
Kathryn LeCheminant	4	MB
Kemi McFarland	18	S
Camilla Phillips	10	OH/RS
Hannah Robison	7	OH
Casey Thurston	20	OH
Taeja Afalava Toleafoa	21	DS/OH
Katie Vaughn	1	OH
Nicole Warner	15	MB
Tia Withers	17	DS/L

ROSTER BREAKDOWN

Returning Starters (4)

Name	Pos.	Ht.	Cl.	Pct.	KPG	DPG	BPG
Christie Carpenter	OH	6-1	SR	.126	2.61	1.95	.560
Jennifer Hamson	RS	6-6	SO	.261	2.76	.830	.830
Kendalyn Hartsock	L	5-6	JR	-.100	.020	3.61	.420*
Nicole Warner	MB	6-2	JR	.225	1.67	.610	1.32

* Assists per game

Starters Lost (3)

Name	Pos.	Ht.	Cl.	Pct.	KPG	DPG	BPG
Christina Measom	RS	6-0	SR	.185	2.30	.430	.580
Kiana Rogers	S	5-11	SR	.203	9.80*	2.62	.550
Stephanie Snow	MB/OH	6-4	SR	.352	2.63	.460	.750

* Assists per game

Returning Letterwinners (8)

Name	Pos.	Ht.	Cl.	Pct.	KPG	DPG	BPG
Christie Carpenter	OH	6-1	SR	.126	2.61	1.95	.560
Coriann Clark	OH/DS	5-9	SO	-.015	.09	1.33	.000
Jennifer Hamson	RS	6-6	SO	.261	2.76	.830	.830
Kendalyn Hartsock	L	5-6	JR	-.100	.020	3.61	.420*
Jessica Jardine	OH	6-1	SO	.014	1.32	.790	.110
Kathryn LeCheminant	MB	6-2	SO	.221	1.18	.210	.820
Taeja Afalava Toleafoa	OH/DS	5-11	SO	.068	.980	1.17	.150
Nicole Warner	MB	6-2	JR	.225	1.67	.610	1.32

* Assists per game

Letterwinners Lost (4)

Name	Pos.	Ht.	Cl.	Pct.	KPG	DPG	BPG
Christina Measom	RS	6-0	SR	.185	2.30	.430	.580
Kiana Rogers	S	5-11	SR	.203	9.80*	2.62	.550
Stephanie Snow	MB/OH	6-4	SR	.352	2.63	.460	.750
Brooke Soon	S	5-11	JR	.250	.020	1.97	.390*

* Assists per game

Others Returning (4)

Name	Pos.	Ht.	Cl.	Pct.	KPG	DPG	BPG
Kimberli Boswell	MB/RS	6-2	SO	.129	.830	.170	.670
Heather Hannemann	S	5-8	JR	.308	.310	1.06	.250
Camilla Phillips	RS	5-11	SR				
Casey Thurston	OH	6-1	SR				

* Assists per game

Others Lost (2)

Name	Pos.	Ht.	Cl.	Pct.	KPG	DPG	BPG
Courtney Honka	L/DS	5-8	JR	.000	.000	1.25	.000
Lauren Sagers	RS	6-0	JR				

Newcomers (6)

Name	Pos.	Ht.	Cl.
Kimberly Dahl	OH	6-0	FR
Mariah Katoa	MB	6-0	FR
Kemi McFarland	S	6-1	SO
Hannah Robison	OH	6-0	FR
Katie Vaughn	OH	6-2	FR
Tia Withers	DS/L	5-9	FR

Geographic Breakdown

CALIFORNIA (1)

Katie Vaughn

IDAHO (1)

Nicole Warner

MONTANA (2)

Coriann Clark
Kendalyn Hartsock

OREGON (2)

Kimberli Boswell
Tia Withers

UTAH (12)

Taeja Afalava Toleafoa
Christie Carpenter
Kimberly Dahl
Jennifer Hamson
Heather Hannemann
Jessica Jardine
Mariah Katoa
Kathryn LeCheminant
Kemi McFarland
Camilla Phillips
Hannah Robison
Casey Thurston

BYU Volleyball Ready for Week 2

PROVO, Utah—After recording its first victory of the season Saturday, the BYU women's volleyball team gears up to take on four more teams starting with Weber State at home Tuesday. On Friday and Saturday the Cougars will participate in the Kansas State Invitational against Idaho, Georgia Southern and host Kansas State.

"We are always excited to play against in-state competition," head coach Shawn Olmstead said. "Tuesday and this coming weekend in Kansas will be another opportunity for us to see our team progress and make changes. This entire week is filled with good competition that will help us move our group forward. Going on the road will be a valuable experience for the kids on our team, both young and old."

The Cougars (1-2) begin the week with their fourth-straight home match against the Wildcats (0-3) at 7 p.m. in the Smith Fieldhouse. The match is the 60th face-off between the teams, with BYU holding a 59-0 record. Both teams boast new head coaches, with former BYU men's volleyball head coach Tom Peterson leading the Wildcats and former BYU men's volleyball player Olmstead leading the Cougars.

Over the weekend, BYU launched its season with a 3-0 loss to No. 8 Illinois, a 3-1 victory against UC Santa Barbara and a 3-0 loss to WCC foe Saint Mary's. Despite the losses, opposite hitter Jennifer Hamson, setter Heather Hannemann and outside hitter Jessica Jardine recorded career highs in all three matches, including 20 kills by Hamson against Saint Mary's.

The Wildcats opened their season with a 3-0 loss to in-state opponent Utah, a 3-0 loss to Northwestern and a 3-2 loss to Cal State Northridge. Briana Wilms leads the Wildcats with

39 kills and contributed nine digs and seven blocks. She's joined by Michele Arave with 22 digs and Caitlin Penrod with 12 blocks, 16 digs and eight kills.

Friday, the Cougars take on Idaho in the first match of the Kansas State Invitational at 10 a.m. CT. Idaho shut down Butler 3-2 in its first match of the season, but couldn't hold on against Eastern Michigan, losing 3-0. After falling behind one set to Notre Dame, Idaho snuck in a second-set victory but wasn't able to shut down the Irish in the 3-1 defeat.

Next on the tournament schedule at 5 p.m. Friday, the Cougars face Georgia Southern, which has the best record of the tournament teams so far. The Eagles participated in the Spring Hill Suites Invitational last weekend, posting 3-0 wins against Jacksonville and Montana State and losing 3-2 to Stephen F. Austin and South Dakota State.

The Cougars close the tournament facing host Kansas State Saturday at 1 p.m. Kansas State went 1-2 in last weekend's Georgia Tech Courtyard Classic, falling to Georgia Tech and Louisville and sweeping Tennessee Tech.



2011 Season Outlook

With five new recruits and a new head coach, the BYU women's volleyball team sets out to make its mark on a new conference in the 2011 season. Led by senior Christie Carpenter and junior Nicole Warner, the Cougars enter the new season ready to play with veteran experience and fresh talent.

"We're excited about the season," head coach Shawn Olmstead said. "The girls responded well during our double days in fall camp and we're eager to get out and start competing. They're effort during camp was great, so we're pleased and anxious to start this season."

Heading into the West Coast Conference, BYU is undefeated in its series' against four of the eight new conference foes, has a winning record against one and is tied with two. Four of this season's WCC members finished in the top 100 teams of 2010.

"This season we have good depth that we haven't had in the past, which gives us more options" Olmstead said. "We have returning experience at key positions and we anticipate those girls to excel and lead this group. The experience is a huge plus going forward and experience in matches is crucial."

BYU Athletics' new partnership with BYUtv will allow 12 of the 14 home matches to be aired on BYUtv.

Breakdown by Position:

Middle Blocker

In 2010, junior starter Nicole Warner ranked third in the Mountain West Conference for blocks and No. 40 in the nation with 1.32 per game and 162 total. Warner also contributed 205 kills and 503 attacks.

"With two years of experience already, Nicole is a great blocker," Olmstead said. "She has good ability to move side-to-side and she's be-

2011 BYU Women's Volleyball

coming more and more skilled at the other positions crucial to hers."

Kathryn LeCheminant contributed 33 kills and 23 blocks in her first year playing for the Cougars. Fellow sophomore Jessica Jardine totaled 37 kills, 142 attacks and 22 digs in her rookie season.

Kimberli Boswell rounds off the list of returning middle blockers after in seven matches last season.

The Cougars are adding freshman Mariah Katoa, who qualified for the Junior Olympics and took Layton High School to a region championship in 2008.

Outside Hitter

Senior outside hitter Christie Carpenter placed second on the team with 313 season kills and led the team with 1,074 attacks in 2010. Carpenter recorded 234 digs for the Cougars and 67 blocks.

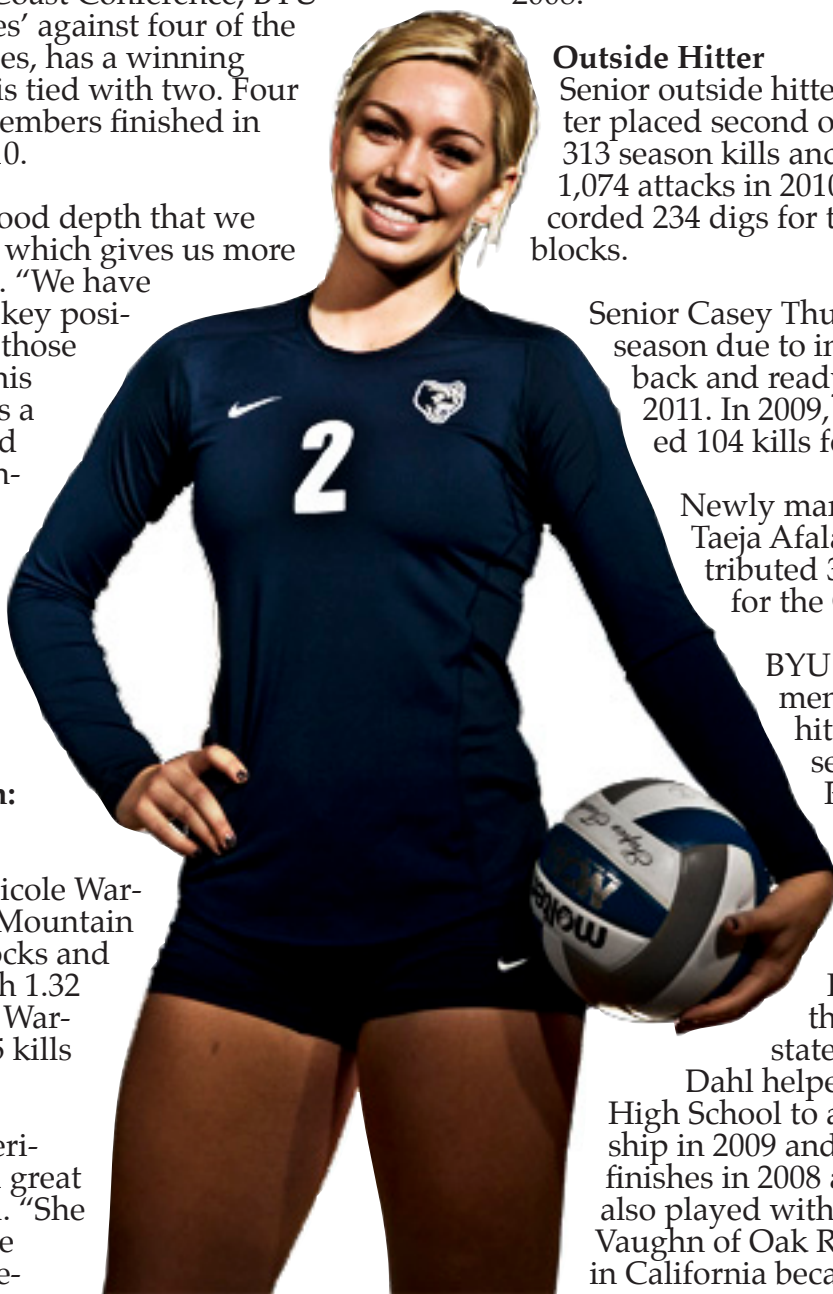
Senior Casey Thurston sat out last season due to injury, but will be back and ready for action in 2011. In 2009, Thurston recorded 104 kills for 1.58 per set.

Newly married sophomore Taea Afalava Toleafoa contributed 39 kills and 47 digs for the Cougars in 2010.

BYU adds three freshmen to the outside hitter position this season. Hannah

Robison was one of the top 100 recruits in the nation coming out of high school and helped Orem High School to a third-place finish in state in 2010. Kimberly

Dahl helped Pleasant Grove High School to a state championship in 2009 and second-place finishes in 2008 and 2010. She also played with Club Utah. Katie Vaughn of Oak Ridge High School in California became the all-time ca-



2011 Season Outlook

reer kill leader for the high school after the 2010 season with over 1,362 kills.

Opposite Hitter

At opposite hitter, BYU's returners totaled more than 100 kills each during the 2010 season. Sophomore Jennifer Hamson helped the Cougars to their 9-7 conference record with 644 attacks, 246 kills, 74 digs and 74 blocks.

"Jen has worked hard this off-season," Olmstead said. "With one year more experience, we anticipate she'll continue to grow and get better with each opportunity on the court."

Hamson is joined by senior Camilla Phillips, who totaled 116 kills and 49 blocks last season.

Setter

After backing up and learning from star setter Kiana Rogers last season, junior setter Heather Hannemann will take over for 2011. Hannemann had 71 assists, 17 digs and 13 attacks in the 2010 season.

Kemi McFarland joins the roster at setter after helping Salt Lake Community College to a 28-8 record and undefeated home record in 2010.

Defensive Specialist/Libero

As the Cougar Club Y Award's Walk-On of the Year, Kendalyn Hartsock led the team with 411 digs and added 48 assists last season. Hartsock averaged 3.92 digs per set during conference play, placing her third in the league for digs.

Sophomore Coriann Clark contributed 128 digs for BYU in 2010.

Joining the Cougars, freshman Tia Withers, a Beaverton, Ore. native, helped Sunset High School to back-to-back third-place finishes in state. Withers also competed in beach volleyball, winning five beach championships and two beach doubles championships.

Schedule

Five teams on this year's schedule qualified for the 2010 NCAA Division I Championships and four finished in the top 50 in the NCAA.

To kick off the season, the Cougars host No. 8 Illinois, UC Santa Barbara and WCC opponent Saint Mary's in the BYU Nike Invitational.

2011 BYU Women's Volleyball

Following a matchup with Weber State, the team heads to Kansas for the Kansas State Tournament to take on Idaho, Georgia Southern and Kansas State.

BYU finishes tournament play with the Utah Invitational in Salt Lake City, where the Cougars will face the Utes, UC Riverside and Eastern Michigan.

Matchups with BYU-Hawaii, Cal State Fullerton and Cal State Northridge round off pre-conference play.

League play starts at home with the season's second match against Saint Mary's. The Cougars are 2-2 against the Gaels, with their last matchup being in 2007.

BYU hits the road to compete against Loyola Marymount, looking to continue its undefeated record against Lions, followed by a matchup against 2010 WCC champion No. 20 San Diego. The Cougars will then host Santa Clara for their Dig Pink Match Oct. 6.

With a 12-6 series history against Pepperdine, the Cougars head to Malibu, Calif., to take on the Waves and continue the winning record.

Following the Pepperdine matchup, BYU meets Portland on the road for its first battle against the Pilots. The Cougars finish up the first half of conference play facing Gonzaga.

The Cougars welcome Pepperdine to Provo to begin the second half of conference play and end the season with back-to-back home matches against Gonzaga and Portland.

Matches Televised on BYUtv

Illinois	Aug. 26	5:30 p.m. MDT
UC Santa Barbara	Aug. 27	10 a.m. MDT
Saint Mary's	Aug. 27	8 p.m. MDT
Weber State	Aug. 30	7 p.m. MDT
BYU-Hawaii	Sept. 7	7 p.m. MDT
Saint Mary's	Sept. 22	7 p.m. MDT
Santa Clara	Oct. 6	7 p.m. MDT
Pepperdine	Oct. 20	7 p.m. MDT
Loyola Marymount	Nov. 3	7 p.m. MDT
San Francisco	Nov. 5	7 p.m. MDT
Gonzaga	Nov. 17	7 p.m. MDT
Portland	Nov. 19	7 p.m. MDT

ROSTER NOTES

DOUBLE-DIGIT OUTINGS

KILLS

PLAYER	TOTAL	HIGH
Jennifer Hamson	4	20
Jessica Jardine	1	10

DIGS

PLAYER	TOTAL	HIGH
Jennifer Hamson	1	18
Heather Hannemann	2	15
Kendalyn Hartsock	3	20
Jessica Jardine	1	10

BLOCKS

PLAYER	TOTAL	HIGH
--------	-------	------

DOUBLE-DOUBLES

Jennifer Hamson (1)
vs. UCSB (8/27) - 17 K and 18 D

Heather Hannemann (2)
vs. Illinois (8/26) - 27 A and 15 D
vs. Saint Mary's (8/27) - 35 A and 10 D

WCC PRE-SEASON POLL

PL.	TEAM	VOTES	2010 WCC RECORD	OVERALL
1.	Pepperdine	7	11-3	20-8
2.	Saint Mary's	1	12-2	20-8
3.	San Diego	1	13-1	24-6
4.	Santa Clara		5-9	14-14
5.	Loyola Marymount		6-8	15-15
6.	BYU		9-7(MWC)	14-16
T7.	Portland		5-9	12-18
T7.	San Francisco		3-11	5-22
9.	Gonzaga		1-13	4-27

AVCA DIVISION I COACHES POLL (AS OF AUG 29, 2011)

RANK	TEAM (FIRST-PLACE VOTES)	TOTAL POINTS	RECORD	FINAL 2010
1	CALIFORNIA (31)	1422	3-0	3
2	PENN STATE (11)	1388	1-1	1
3	SOUTHERN CALIFORNIA (5)	1356	1-1	2
4	TEXAS (9)	1347	2-0	4
5	NEBRASKA (1)	1221	2-0	5
6	STANFORD (1)	1140	2-0	6
7	ILLINOIS	1118	3-0	8
8	WASHINGTON	1091	3-0	7
9	FLORIDA	982	2-0	9
10	HAWAI'I (1)	970	2-0	10
11	MINNESOTA	913	1-1	12
12	UCLA	880	3-0	11
13	PURDUE	759	3-0	13
14	NORTHERN IOWA	613	3-0	14
15	COLORADO STATE	584	3-0	15
16	OREGON (1)	542	1-1	28
17	OKLAHOMA	508	3-0	16
18	DUKE	458	3-0	17
19	IOWA STATE	436	3-0	18
20	SAN DIEGO	304	3-0	20
21	DAYTON	284	3-0	19
22	OHIO STATE	254	4-0	21
23	LONG BEACH STATE	205	2-1	22
24	MICHIGAN	176	3-0	24
25	FLORIDA STATE	143	3-0	30

Class Breakdown

SENIOR (3)	Coriann Clark
Christie Carpenter	Jennifer Hamson
Casey Thurston	Jessica Jardine
Camilla Phillips	Kathryn LeCheminant
	Kemi McFarland
JUNIOR (4)	
Heather Hannemann	FRESHMAN (5)
Kendalyn Hartsock	Kimberly Dahl
Nicole Warner	Mariah Katoa
	Hannah Robison
SOPHOMORE (7)	Katie Vaughn
Taeja Afalava	Tia Withers
Kimberli Boswell	



Shawn Olmstead Head Women's Volleyball Coach

Shawn Olmstead was named head coach of the women's volleyball team in 2011. He entered his first season as an assistant coach at BYU in 2008, serving as the recruiting, video and defensive coordinator. With Olmstead as assistant coach, the Cougars recorded 43 victories.

Coaching Career

Olmstead came to BYU with four years of coaching experience, most recently as an assistant coach for two years at Utah State under former BYU men's volleyball assistant coach Grayson DuBose. While at Utah State, Olmstead served as the program's recruiting coordinator, putting together the second-best recruiting class in the Western Athletic Conference in 2007. He also was responsible for defensive game preparation, including breaking down opponent film and preparing scouting reports. His efforts helped the Aggies rank 25th nationally in blocks per game in 2007.

Prior to his stint at Utah State, Olmstead spent one year as an assistant coach at Cal Poly San Luis Obispo in San Luis Obispo, Calif., in 2005 where he also served as the recruiting coordinator as well as organizing team travel. He helped the Mustangs achieve a 19-6 overall record, improving from 5-24 the year prior to Olmstead's arrival.

Before coaching at Cal Poly, Olmstead spent one year as a volunteer assistant coach for the women's program at Utah Valley State College. He has also coached with IVA High Performance and at various volleyball camps.

Playing Career

Olmstead attended BYU and played libero for the men's volleyball program, helping the Cougars win National Championships in 2001 and 2004 along with a national runner-up finish in 2003. During his senior season in 2004, Olmstead recorded the third-most digs in a single season in school history and earned Mountain Pacific Sports Federation All-Tournament honors.

A native of Carpinteria, Calif., Olmstead prepped at Carpinteria High School where he earned All-CIF volleyball honors as both a junior and senior along with being named his league's Most Valuable Player during his senior season. He set a school record by recording 47 kills in a match.

Personal

Olmstead graduated from BYU with a degree in Spanish Education in 2005 along with a Sociology minor. He is married to the former Farrah Hofheins, and they have two daughters and a son.



BYU'S RECORD WHEN...

Facing ranked opponents	0-1
Facing unranked opponents	2-1
In three games	1-2
In four games	1-0
In five games	0-0
In first game of the match	1-3
In second game of the match	2-2
In third game of the match	2-2
In fourth game of the match	1-0
In fifth game of the match	0-0
Winning first game	1-0
Opponent wins first game	1-2
Recording more kills	2-0
Opponent records more kills	0-2
Opponent and BYU record equal number of kills	0-0
Recording higher hitting percentage	2-0
Opponent records higher hitting percentage	0-2
Opponent and BYU record equal hitting percentage	0-0
Hitting .300+	0-0
Opponent hits .300+	0-0
Three or more Cougars records 10+ kills	0-0
Three or more opponents record 10+ kills	0-0
Out-blocking opponent	1-1
Opponent out-blocks BYU	1-1
Opponent and BYU record equal number of blocks	0-0
Recording 12.0+ blocks	1-0
Opponent records 12.0+ blocks	0-0
Recording more digs	2-1
Opponent records more digs	0-1
Opponent and BYU record equal number of digs	0-0
In August	2-2
In September	0-0
In October	0-0
In November	0-0
In December	0-0
Last 10 matches/Current Streak	2-2
Longest win streak in 2011	1
Playing on Tuesday	1-0
Playing on Thursday	0-0
Playing on Friday	0-1
Playing on Saturday	1-1

2011 BYU TEAM HIGHS

KILLS

(3 games)	45 vs. WSU (8/30)
(4 games)	49 vs. UCSB (8/27)
(5 games)	00

ATTEMPTS

(3 games)	111 vs. Illinois (8/26)
(4 games)	130 vs. UCSB (8/27)
(5 games)	00

ASSISTS

(3 games)	41 vs. Saint Mary's (8/27)
(4 games)	44 vs. UCSB (8/27)
(5 games)	00

DIGS

(3 games)	44 vs. Saint Mary's (8/27)
(4 games)	68 vs. UCSB (8/27)
(5 games)	00

BLOCKS

(3 games)	9 vs. Illinois (8/26)
(4 games)	12.5 vs. UCSB (8/27)
(5 games)	00

2011 BYU INDIVIDUAL HIGHS

KILLS

(3 games)	20, J. Hamson vs. Saint Mary's (8/27)
(4 games)	17, J. Hamson vs. UCSB (8/27)
(5 games)	00

ATTEMPTS

(3 games)	46, J. Hamson vs. Saint Mary's (8/27)
(4 games)	34, J. Hamson vs. UCSB (8/27)
(5 games)	00

ASSISTS

(3 games)	35, H. Hannemann vs. Saint Mary's (8/27)
(4 games)	36, H. Hannemann vs. UCSB (8/27)
(5 games)	00

DIGS

(3 games)	15, H. Hannemann vs. Illinois (8/26)
(4 games)	20, K. Hartsock vs. UCSB (8/27)
(5 games)	00

BLOCKS

(3 games)	6, N. Warner vs. WSU (8/30)
(4 games)	6, K. LeCheminant, N. Warner vs. UCSB (8/27)
(5 games)	00

2010 SEASON/CAREER HIGHS

NO.	NAME	KILLS	ATTEMPTS	HIT % (MIN. 8 ATT.)	DIGS	BLOCK ASSISTS	BLOCK SOLOS	TOTAL BLOCKS	SERVICE ACES	ASSISTS
1	Katie Vaughn	6 (three times) 6 (UCSB, 8/27/11)	23 (UCSB, 8/27/11) 23 (UCSB, 8/27/11)	.235 (WSU, 8/30/11) .235 (WSU, 8/30/11)	1 (SMC, 8/27/11) 1 (SMC, 8/27/11)	3 (UCSB, 8/27/11) 3 (UCSB, 8/27/11)	1 (WSU, 8/30/11) 1 (WSU, 8/30/11)	3 (two times) 3 (UCSB, 8/27/11)	-- --	-- --
2	Heather Hannemann	3 (UCSB, 8/27/11) 3 (UCSB, 8/27/11)	6 (UCSB, 8/27/11) 6 (two times)	.333 (UCSB, 8/27/11) .333 (UCSB, 8/27/11)	15 (ILL, 8/26/11) 15 (ILL, 8/26/11)	4 (UCSB, 8/27/11) 4 (UCSB, 8/27/11)	-- 1 (WSU, 9/11/10)	4 (UCSB, 8/27/11) 4 (UCSB, 8/27/11)	1 (two times) 2 (AFA, 9/19/09)	36 (UCSB, 8/27/11) 36 (UCSB, 8/27/11)
4	Kathryn LeCheminant	5 (WSU, 8/30/11) 10 (CP, 9/4/10)	13 (WSU, 8/30/11) 21 (CP, 9/4/10)	.077 (WSU, 8/30/11) .429 (CP, 9/4/10)	3 (UCSB, 8/27/11) 3 (UCSB, 8/27/11)	4 (two times) 6 (two times)	2 (UCSB, 8/27/11) 2 (UCSB, 8/27/11)	6 (UCSB, 8/27/11) 6 (three times)	-- --	-- --
5	Mariah Katoa	-- --	-- --	-- --	-- --	-- --	-- --	-- --	-- --	-- --
6	Kendalyn Hartssock	-- 1 (HOU, 9/11/10)	-- 2 (HOU, 9/11/10)	-- --	20 (UCSB, 8/27/11) 25 (UNM, 11/20/10)	-- --	-- --	-- --	-- 2 (two times)	4 (UCSB, 8/27/11) 5 (UNM, 11/20/10)
10	Camilla Phillips	-- 14 (CSU, 11/14/09)	-- 34 (Utah, 10/23/09)	-- .500 (CSU, 11/14/09)	-- 5 (NDSU, 9/29/09)	-- 7 (UVU, 10/27/09)	-- --	-- 7 (UVU, 10/27/09)	-- --	-- 1 (four times)
11	Coriann Clark	-- 3 (MT, 8/28/10)	-- 13 (MT, 8/28/10)	-- .154 (MT, 8/28/10)	-- 13 (UNM, 11/20/10)	-- --	-- --	-- --	-- 1 (Ill, 8/27/10)	-- 5 (UNLV, 11/11/10)
12	Jessica Jardine	10 (UCSB, 8/27/11) 10 (UCSB, 8/27/11)	28 (ILL, 8/26/11) 29 (Wyo, 9/25/10)	.286 (UCSB, 8/27/11) .286 (UCSB, 8/27/11)	10 (SMC, 8/27/11) 10 (SMC, 8/27/11)	2 (SMC, 8/27/11) 2 (two times)	-- --	2 (SMC, 8/27/11) 2 (two times)	1 (three times) 2 (Wyo, 9/25/10)	2 (ILL, 8/26/11) 2 (ILL, 8/26/11)
13	Kimberly Dahl	-- --	-- --	-- --	-- --	-- --	-- --	-- --	-- --	-- --
14	Christie Carpenter	7 (WSU, 8/30/11) 21 (Wyo, 10/17/09)	12 (WSU, 8/30/11) 57 (two times)	.417 (WSU, 8/30/11) .417 (WSU, 8/30/11)	5 (WSU, 8/30/11) 15 (two times)	-- 7 (three times)	-- 1 (nine times)	-- 8 (CSU, 9/24/10)	-- 3 (two times)	-- 2 (five times)
15	Nicole Warner	8 (WSU, 8/30/11) 13 (ISU, 9/4/10)	16 (UCSB, 8/27/11) 31 (CP, 9/4/10)	.429 (WSU, 8/30/11) .750 (WSU, 10/12/10)	3 (UCSB, 8/27/11) 6 (Wyo, 10/17/09)	6 (two times) 12 (Wyo, 11/24/10)	-- 2 (two times)	6 (three times) 11 (LMU, 9/10/10)	-- 3 (two times)	1 (ILL, 8/26/11) 1 (nine times)
16	Hannah Robison	-- --	-- --	-- --	-- --	-- --	-- --	-- --	-- --	-- --
17	Tia Withers	-- --	4 (UCSB, 8/27/11) 4 (UCSB, 8/27/11)	-- --	7 (UCSB, 8/27/11) 7 (UCSB, 8/27/11)	-- --	-- --	-- --	2 (WSU, 8/30/11) 2 (WSU, 8/30/11)	3 (UCSB, 8/27/11) 3 (UCSB, 8/27/11)
18	Kemi McFarland	-- --	-- --	-- --	-- --	-- --	-- --	-- --	-- --	-- --
19	Jennifer Hamson	20 (SMC, 8/27/11) 20 (SMC, 8/27/11)	46 (SMC, 8/27/11) 51 (LMU, 9/10/10)	.412 (UCSB, 8/27/11) .647 (UVU, 10/9/10)	18 (UCSB, 8/27/11) 18 (UCSB, 8/27/11)	5 (SMC, 8/27/11) 7 (two times)	-- 1 (four times)	5 (SMC, 8/27/11) 8 (UNLV, 10/16/10)	2 (UCSB, 8/27/11) 3 (four times)	1 (two times) 2 (LMU, 9/10/10)
20	Casey Thurston	3 (ILL, 8/26/11) 13 (SDSU, 9/17/09)	15 (ILL, 8/26/11) 30 (SDSU, 11/17/09)	.071 (UCSB, 8/27/11) .500 (two times)	2 (ILL, 8/26/11) 3 (UNLV, 10/29/09)	2 (ILL, 8/26/11) 4 (SDSU, 9/17/09)	-- 1 (two times)	2 (ILL, 8/26/11) 5 (SDSU, 9/17/09)	-- --	-- 1 (two times)
21	Taeja Afalava Toleafoa	-- 10 (SC, 8/28/10)	-- 39 (SC, 8/28/10)	-- .364 (SDSU, 11/6/10)	-- 19 (SC, 8/28/10)	-- 2 (Neb, 9/3/10)	-- --	-- 2 (Neb, 9/3/10)	-- 2 (Ill, 8/27/10)	-- 1 (two times)
22	Kimberli Boswell	-- 6 (AFA, 11/13/10)	-- 17 (AFA, 11/13/10)	-- .118 (AFA, 11/13/10)	-- 1 (two times)	2 1 (SMC, 8/27/11) 5 (AFA, 11/13/10)	-- 1 (AFA, 11/13/10)	-- 6 (AFA, 11/13/10)	-- 2 (AFA, 10/14/10)	-- --

MATCH-BY-MATCH STARTERS

MATCH	SETTER	LIBERO	OPPOSITE	OUT. HITTER	OUT. HITTER	MID. BLOCKER	MID. BLOCKER
Illinois (8/26)	H. Hannemann	K. Hartsock	J. Hamson	C. Thurston	J. Jardine	N. Warner	K. LeCheminant
UCSB (8/27)	H. Hannemann	K. Hartsock	J. Hamson	C. Thurston	J. Jardine	N. Warner	K. LeCheminant
Saint Mary's (8/27)	H. Hannemann	K. Hartsock	J. Hamson	K. Vaughn	J. Jardine	N. Warner	K. LeCheminant
WSU (8/30)	H. Hannemann	K. Hartsock	J. Hamson	K. Vaughn	J. Jardine	N. Warner	K. LeCheminant

MATCH-BY-MATCH STAT LEADERS

OPPONENT	KILLS	ATTEMPTS	ASSISTS	ACES	DIGS	BLOCKS
Illinois (8/26)	17 J. Hamson	42 J. Hamson	27 H. Hannemann	1 J. Jardine	15 H. Hannemann	5 K. LeCheminant
UCSB (8/27)	17 J. Hamson	34 J. Hamson	36 H. Hannemann	2 J. Hamson	20 K. Hartsock	6 K. LeCheminant/N. Warner
Saint Mary's (8/27)	20 J. Hamson	46 J. Hamson	35 H. Hannemann	--	10 H. Hannemann/J. Jardine/K. Hartsock	5 J. Hamson
WSU (8/30)	11 J. Hamson	26 J. Hamson	33 H. Hannemann	2 T. Withers	10 K. Hartsock	6 N. Warner

Box Scores

2011 BYU Women's Volleyball

Match 1: BYU vs. No. 8 Illinois

Match 2: BYU vs. UCSB

Volleyball Box Score
BYU Cougar Volleyball 2011
#8 Illinois vs BYU (Aug 26, 2011 at Provo, Utah)

Volleyball Box Score
BYU Cougar Volleyball 2011
UC Santa Barbara vs BYU (Aug 27, 2011 at Provo, Utah)

##	Illinois	Attack				Serve			Block				Pts		
		S	K	E	TA	Pct	Ast	SA	SE	RE	Dig	BS		BA	BE
4	Ward, Colleen	3	10	6	32	.125	1	0	4	1	14	0	1	1	0
5	Dorn, Anna	3	5	1	8	.500	0	0	0	0	1	0	3	0	0
6	Bartsch, Michelle	3	13	6	33	.212	0	0	0	0	7	0	2	0	0
11	Luhrsen, Annie	3	2	1	5	.200	37	1	2	0	5	0	3	1	0
12	Johnson, Erin	3	9	2	14	.500	0	0	0	0	0	0	4	0	0
14	McMahon, Liz	2	0	2	3	-.667	0	0	0	0	0	0	0	0	0
2	Feldman, Rachel	3	1	0	1	1.000	0	0	0	0	2	0	0	0	0
3	Beltran, Jennifer	3	0	0	0	.000	2	1	1	0	10	0	0	0	0
10	Wolfe, Jackie	3	0	0	0	.000	0	0	1	0	2	0	0	0	0
15	Orozco, Jazmine	3	5	0	7	.714	0	0	0	0	0	0	1	0	0
Totals		3	45	18	103	.262	40	2	8	1	41	0	14	2	0

##	UC Santa Barbara	Attack				Serve			Block				Pts		
		S	K	E	TA	Pct	Ast	SA	SE	RE	Dig	BS		BA	BE
3	Nielson, Hanna	4	0	3	11	-.273	33	0	0	0	6	0	1	1	0
4	Sully, Leah	4	12	8	37	.108	0	2	1	2	14	0	0	0	0
8	Thompson, Katey	4	6	5	22	.045	0	0	0	0	10	1	1	0	0
11	Schmidt, Stacey	4	8	5	21	.143	0	1	0	0	0	2	2	2	0
17	Wilson, Jenna	4	4	1	9	.333	0	0	0	0	0	0	1	2	0
20	Sherrard, Kara	4	4	9	34	-.147	1	0	2	3	8	0	1	0	0
2	Lowe, Chelsey	4	0	1	3	-.333	0	1	0	0	21	0	0	0	0
5	Pischke, Taylor	3	0	2	4	-.500	0	0	0	0	0	0	0	0	0
7	Lau, Erica	4	0	0	0	.000	0	1	0	0	1	0	0	0	0
14	Aiken, Halle	2	0	2	2	-1.000	0	0	0	0	0	0	0	0	0
Totals		4	34	36	143	-.014	34	5	3	5	60	3	6	5	0

Team Attack By Set

Set	K	E	TA	Pct
1	17	6	38	.289
2	14	9	33	.152
3	14	3	32	.344

TOTAL TEAM BLOCKS: 7.0

SET SCORES

Set	1	2	3	Team Records:
Illinois (3)	28	25	25	1-0
BYU (0)	26	22	16	0-1

Team Attack By Set

Set	K	E	TA	Pct
1	15	6	40	.225
2	7	10	33	-.091
3	9	9	39	.000
4	3	11	31	-.258

TOTAL TEAM BLOCKS: 6.0

SET SCORES

Set	1	2	3	4	Team Records:
UC Santa Barbara (1)	25	14	17	9	1-1
BYU (3)	18	25	25	25	1-1

##	BYU	Attack				Serve			Block				Pts		
		S	K	E	TA	Pct	Ast	SA	SE	RE	Dig	BS		BA	BE
2	HANNEMANN, Heather	3	2	0	4	.500	27	0	2	0	15	0	2	0	0
4	LECHEMINANT, Kathryn	3	4	0	7	.571	0	0	0	0	1	1	4	0	0
12	JARDINE, Jessica	3	6	7	28	-.036	2	1	2	0	6	0	1	0	0
15	WARNER, Nicole	3	4	4	15	.000	1	0	1	0	0	0	4	2	0
19	HAMSON, Jennifer	3	17	4	42	.310	0	0	2	0	4	0	3	0	0
20	THURSTON, Casey	3	3	5	15	-.133	0	0	0	1	2	0	2	0	0
6	HARTSOCK, Kendalyn	3	0	0	0	.000	2	0	1	1	9	0	0	0	1
17	WITHERS, Tia	3	0	0	0	.000	1	0	0	0	1	0	0	0	0
Totals		3	36	20	111	.144	33	1	8	2	38	1	16	2	1

##	BYU	Attack				Serve			Block				Pts		
		S	K	E	TA	Pct	Ast	SA	SE	RE	Dig	BS		BA	BE
2	HANNEMANN, Heather	4	3	1	6	.333	36	1	1	0	9	0	4	0	0
4	LECHEMINANT, Kathryn	4	4	3	12	.083	0	0	0	0	3	2	4	0	0
12	JARDINE, Jessica	4	10	4	21	.286	1	1	1	1	8	0	1	1	0
15	WARNER, Nicole	4	7	3	16	.250	0	0	1	0	3	0	6	1	0
19	HAMSON, Jennifer	4	17	3	34	.412	0	2	4	0	18	0	3	0	0
20	THURSTON, Casey	1	2	1	14	.071	0	0	0	0	0	0	0	0	0
1	VAUGHN, Katie	4	6	1	23	.217	0	0	0	1	0	0	3	0	0
6	HARTSOCK, Kendalyn	4	0	0	0	.000	4	0	1	2	20	0	0	0	0
17	WITHERS, Tia	4	0	0	4	.000	3	1	1	1	7	0	0	0	0
Totals		4	49	16	130	.254	44	5	9	5	68	2	21	2	0

Team Attack By Set

Set	K	E	TA	Pct
1	17	8	41	.220
2	10	6	31	.129
3	9	6	39	.077

TOTAL TEAM BLOCKS: 9.0

Site: Provo, Utah (Smith Fieldhouse)
Date: Aug 26, 2011 Attend: 2741 Time: 1h 37min
Referees: Maile Jewkes, Daphne Nelson, Keilah Martinez

Team Attack By Set

Set	K	E	TA	Pct
1	11	8	48	.062
2	11	3	28	.286
3	14	2	30	.400
4	13	3	24	.417

TOTAL TEAM BLOCKS: 12.5

Site: Provo, Utah (Smith Fieldhouse)
Date: Aug 27, 2011 Attend: 265 Time: 1h 34m
Referees: Daphne Nelson, Terri Jackson, Alyssa Kekauoha

Match 3: BYU vs. Saint Mary's

Match 4: BYU vs. Weber State

Volleyball Box Score
BYU Cougar Volleyball 2011
Saint Mary's vs BYU (Aug 27, 2011 at Provo, Utah)

Volleyball Box Score
BYU Cougar Volleyball 2011
WSU vs BYU (Aug 30, 2011 at Provo, Utah)

##	Saint Mary's	Attack				Serve			Block				Pts		
		S	K	E	TA	Pct	Ast	SA	SE	RE	Dig	BS		BA	BE
1	CORP, Lauren	3	13	6	37	.189	1	3	1	0	6	0	1	0	0
2	GILLCRIST, Rachel	3	3	2	14	.071	0	0	0	0	1	0	8	1	0
3	JOLLY, Gabby	3	6	4	15	.133	1	0	0	0	1	0	3	0	0
7	SHAW, Jordan	3	13	4	27	.333	2	0	2	0	5	0	2	0	0
9	WHITE, Missy	3	5	0	10	.500	42	2	0	0	2	0	4	2	1
11	LOOS, Natalie	3	9	5	20	.200	0	0	0	0	0	0	5	1	0
5	SCHROEDER, Anna	3	0	0	0	.000	0	0	1	0	2	0	0	0	0
17	REAMS, Sarah	3	0	0	0	.000	1	0	1	0	16	0	0	0	0
21	TINSLEY, Samantha	3	0	0	0	.000	0	0	3	0	5	0	0	0	0
Totals		3	49	21	123	.228	47	5	8	0	38	0	23	4	1

##	WSU	Attack				Serve			Block				Pts		
		S	K	E	TA	Pct	Ast	SA	SE	RE	Dig	BS		BA	BE
3	WRAY, Bethany	3	12	4	29	.276	1	0	1	2	9	1	1	0	0
5	JONES, Emily	3	1	2	9	-.111	0	0	2	0	1	0	4	0	0
2	ARAVE, Michele	2	0	0	0	.000	1	0	0	0	0	0	0	0	0
9	ORR, Ashley	3	4	2	9	.222	0	0	0	0	0	0	6	0	0
11	PENROD, Caitlin	3	1	2	4	-.250	28	1	1	0	2	0	3	1	0
15	WILMS, Briana	3	10	4	24	.250	0	0	3	1	1	0	2	0	0
1	EARL, Shelby	2	0	0	0	.000	0	0	2	0	2	0	0	0	0
2	TARBOX, McKay	3	0	0	0	.000	0	0	0	0	5	0	0	0	0
4	KAP, Mikelle	3	0	0	1	.000	1	0	0	1	8	0	0	0	0
16	COX, Dama	3	5	4	15	.067	0	1	1	0	1	0	5	0	0
Totals		3	33	18	91	.165	31	2	10	4	29	1	21	1	0

Team Attack By Set

Set	K	E	TA	Pct
1	14	6	35	.229
2	16	7	37	.243
3	19	8	51	.216

TOTAL TEAM BLOCKS: 11.5

SET SCORES

Set	1	2	3	Team Records:
Saint Mary's (3)	25	25	31	1-2
BYU (0)	21	22	29	1-2

Team Attack By Set

Set	K	E	TA	Pct
1	8	6	26	.077
2	10	7	27	.111
3	15	5	38	

BYU Women's Volleyball

2011 Season Stats: All Matches

RECORD:	OVERALL	HOME	AWAY	NEUTRAL
ALL GAMES	2-2	2-2	0-0	0-0
CONFERENCE	0-0	0-0	0-0	0-0
NON-CONFERENCE	2-2	2-2	0-0	0-0

#	Player	sp	Attack				Set		Serve			Dig		Blocking					points			
			k	k/s	e	ta	pct	a	a/s	sa	se	sa/s	re	dig	dig/s	bs	ba	total		blk/s	be	bhe
14	CARPENTER, Christie	2	7	3.50	2	12	.417	0	0.00	0	0	0.00	0	5	2.50	0	0	0	0.00	1	0	-
19	HAMSON, Jennifer	13	65	5.00	17	148	.324	2	0.15	2	10	0.15	0	34	2.62	0	13	13	1.00	1	0	-
15	WARNER, Nicole	13	24	1.85	11	55	.236	1	0.08	0	3	0.00	0	5	0.38	0	18	18	1.38	3	0	-
1	VAUGHN, Katie	10	18	1.80	7	55	.200	0	0.00	0	0	0.00	4	2	0.20	1	5	6	0.60	0	0	-
2	HANNEMANN, Heather	13	8	0.62	5	19	.158	131	10.08	2	4	0.15	0	38	2.92	0	8	8	0.62	1	0	-
4	LECHEMINANT, Kathryn	13	16	1.23	10	41	.146	0	0.00	0	0	0.00	0	5	0.38	3	10	13	1.00	0	0	-
12	JARDINE, Jessica	12	29	2.42	22	84	.083	5	0.42	3	3	0.25	3	26	2.17	0	4	4	0.33	1	0	-
22	BOSWELL, Kimberli	2	0	0.00	0	0	.000	0	0.00	0	0	0.00	0	0	0.00	0	2	2	1.00	0	0	-
17	WITHERS, Tia	13	0	0.00	0	5	.000	7	0.54	3	2	0.23	2	18	1.38	0	0	0	0.00	0	0	-
6	HARTSOCK, Kendalyn	13	0	0.00	0	0	.000	11	0.85	0	2	0.00	4	49	3.77	0	0	0	0.00	0	3	-
20	THURSTON, Casey	4	5	1.25	6	29	-.034	0	0.00	0	0	0.00	1	2	0.50	0	2	2	0.50	0	0	-
	TEAM	-	-	-	-	-	-	-	-	-	-	-	0	-	-	-	-	-	-	-	-	-
	BYU	13	172	13.23	80	448	.205	157	12.08	10	24	0.77	14	184	14.15	4	62	35.0	2.69	7	3	-
	Opponents	13	161	12.38	93	460	.148	152	11.69	14	29	1.08	10	168	12.92	4	64	36.0	2.77	12	1	-

Team Statistics	BYUW11	OPP
ATTACK		
Kills	172	161
Errors	80	93
Total Attacks	448	460
Attack Pct	.205	.148
Kills/Set	13.2	12.4
SET		
Assists	157	152
Assists/Set	12.1	11.7
SERVE		
Aces	10	14
Errors	24	29
Aces/Set	0.8	1.1
SERVE RECEPTIONS		
Errors	14	10
Errors/Set	1.1	0.8
DEFENSE		
Digs	184	168
Digs/Set	14.2	12.9
BLOCKING		
Block Solo	4	4
Block Assist	62	64
Total Blocks	35.0	36.0
Blocks/Set	2.7	2.8
Block Errors	7	12
Ball handling errors	3	1
ATTENDANCE		
Total	5451	0
Dates/Avg Per Date	4/1363	0/0
Neutral site #/Avg	0/0	
Current win streak	1	-
Home win streak	1	-

Date	Opponent	Score	Score by set	Att.
Aug 26	#8 ILLINOIS	L 0-3	26-28,22-25,16-25	2741
Aug 27	UC SANTA BARBARA	w 3-1	18-25,25-14,25-17,25-9	265
Aug 27	SAINT MARY'S	L 0-3	21-25,22-25,29-31	1040
Aug 30	WSU	w 3-0	25-14,25-21,28-26	1405

Record in 3-set matches: 1-2
 Record in 4-set matches: 1-0
 Record in 5-set matches: 0-0