

UTAH STATE



WOMEN'S BASKETBALL

2022-23 SCHEDULE

3-5 Overall, 0-0 MW
2-2 Home / 1-3 Away / 0-0 Neutral

October (1-0)
1 **FORT LEWIS COLLEGE[^]** *W, 74-45*

NOVEMBER (1-5)
7 **College of Idaho** *L, 68-78*
11 **Southeastern Louisiana** *W, 78-68*
15 **Utah Tech** *L, 57-95*
19 **Arkansas State** *L, 57-63*
23 **Ball State** *L, 55-80*
26 **USC** *L, 48-79*

DECEMBER (2-0)
1 **Weber State** *W, 74-69*
3 **Utah Valley** *W, 65-55*
6 **BYU** *11 am*
10 **Loyola Marymount** *3 pm*
20 **Eastern Washington** *2 pm*
29 **Air Force*** *6:30 pm*
31 **San Diego State*** *TBA*

JANUARY (0-0)
5 **Colorado State*** *6 pm*
7 **Boise State*** *2 pm*
14 **Nevada*** *2 pm*
16 **Fresno State*** *5:30 pm*
19 **Air Force*** *6 pm*
21 **San Jose State*** *TBA*
26 **Wyoming*** *6 pm*
28 **New Mexico*** *2 pm*

FEBRUARY (0-0)
2 **Colorado State*** *11:00 am*
4 **Nevada*** *2 pm*
9 **Wyoming*** *6:30 pm*
16 **Fresno State*** *6 pm*
18 **Boise State*** *TBA*
23 **UNLV*** *7:30 pm*
25 **New Mexico*** *TBA*
28 **San Jose State*** *6 pm*

2022-23 Mountain West Championship Las Vegas, Nev.

March 5 **First Round** *TBA*
March 6 **Quarterfinals** *TBA*
March 7 **Semifinals** *TBA*
March 8 **Finals** *TBA*

[^] Exhibition game
* Mountain West game
Home games in **BOLD CAPS**
All times Mountain



3-5
0-0 MW

TEAM INFORMATION

Location Provo, Utah
Enrollment 33,517
Conference..... West Coast Conference
2021-22 Record 26-4, 15-1 WCC
Head Coach Amber Whiting
School Record 3-5 (First season)
Career Record 3-5 (First season)

GAME 9

Utah State vs BYU
Tuesday, December 6
11 a.m. (MT)
Dee Glen Smith Spectrum
Logan, Utah

Mountain West Network | 92.3 KBLU



3-5
0-0 WCC

THE SERIES

All-Time USU trails, 4-39
Last Meeting L, 74-101 - 11/23/21
In Logan 2-17
In Provo 2-19
Neutral 0-3
Current Streak USU L4
First Meeting W, 48-41 - 1/8/74



3-5
0-0 MW

TEAM INFORMATION

Location Los Angeles, California
Enrollment 6,557
Conference..... West Coast Conference
2021-22 Record 11-19, 4-13 WCC
Head Coach Aarika Hughes
School Record 12-26 (Second season)
Career Record 12-26 (Second season)

GAME 10

Utah State at Loyola Marymount
Saturday, December 10
3 p.m. (MT)
Gersten Pavillion
Los Angeles, California

Mountain West Network | 92.3 KBLU



1-7
0-0 WCC

THE SERIES

All-Time Series tied, 2-2
Last Meeting L, 66-69 - 11/19/21
In Logan 1-1
In Los Angeles 1-1
Neutral 0-0
Current Streak USU L1
First Meeting W, 73-61 - 12/18/85

AGGIE TIP-OFF

Utah State (3-5, 0-0 MW) continues its season with a split week of games. The Aggies will first host in-state rival BYU (3-5, 0-0 WCC) at the Dee Glen Smith Spectrum on Tuesday, Dec. 6, at 11 a.m. (MT) before venturing to Los Angeles, California, to face Loyola Marymount (1-7, 0-0 WCC) on Saturday, Dec. 10, at 3 p.m. (MT).

HOW TO FOLLOW

Radio coverage will be provided by 92.3 KBLU with Ajay Salvesen calling play-by-play. Live stats and play-by-play information will be available through Sidearm, while updates will also be provided through the team's social media outlets. Links for live streaming will be available online prior to the game.

AGGIES VERSUS COUGARS

This will be the 44th meeting all-time between Utah State and BYU. The Cougars lead the all-time series, 39-4, and have won the last four meetings. USU's last win against BYU came in a 76-69 win in Provo on Dec. 6, 2017, which snapped a 28-game losing streak in the series. The Aggies have not won at home versus the Cougars since 1978.

AGGIES VERSUS LIONS

Utah State and Utah Valley will meet for the 16th time on Saturday, with USU leading the all-time series, 9-6. The home team has won in each of the previous four games between the two sides with each team winning twice in their home arena. The Wolverines won the most recent matchup, 57-49, on Dec. 21, 2019.

FOLLOW THE AGGIES



/USUWBB



@USUWBasketball



@USUWBasketball

Media Relations Contact: Ajay Salvesen

Office: (435) 797-2066

Cell: (435) 494-9934

Email: ajaysalvesen22@hotmail.com

utahstateaggies.com

2022-23 ROSTER

NUMERICAL ROSTER

No.	Player	Ht.	Pos.	Cl.	Exp.	Hometown (High School/Last School)
0	Prima Chellis	5-11	F	Gr.	TR	Phoenix, Arizona (Leading Edge Academy / SIU Edwardsville / South Mountain CC)
1	Tamiah Robinson	5-9	G	Jr.	TR	Philadelphia, Pennsylvania (West Catholic HS / Labette Community College)
2	Isabella Tañedo	5-5	G	Fr.	HS	Laurel, Maryland (St. John-s College HS)
3	Maria Carvalho	5-8	G	Gr.	TR	Lisbon, Portugal (Escola secundaria de vagos/ Utah Valley)
5	Kinley Falslev-Wickizer	5-8	G	Jr.	2L	Benson, Utah (Green Canyon HS)
10	Cristina Oliva	5-9	G	So.	TR	Davis, California (Davis HS / Sierra College)
12	Olivia Mason	6-0	F	Sr.	TR	Kennett Square, Pennsylvania (Ursuline Academy / Niagara University)
15	Olivia Wikstrom	6-1	G	Jr.	1L	Bainbridge Island, Washington (Bainbridge HS / Northern Colorado)
20	Lillian Harris	6-2	F	So.	TR	Westminster, Maryland (Westminster HS / CCBC Essex)
21	Mayson Kimball	5-11	G	Gr.	TR	Webster, New Hampshire (Tilton School / Merrimack College)
23	Tiairra Hill-Brown	6-2	F	Fr.	HS	Las Vegas, Nevada (Ed W. Clark HS)
24	Natalie Fraley	6-0	G	Fr.	HS	Kelso, Washington (Kelso HS)
41	Abby Wahl	6-1	F	Gr.	TR	Santa Claus, Indiana (Heritage Hills HS / Eastern Illinois)
43	Ashya Klopfenstein	6-1	F	Sr.	TR	Howe, Indiana (Westview HS / Robert Morris / Dawson CC)

ALPHABETICAL ROSTER

No.	Player	Ht.	Pos.	Cl.	Exp.	Hometown (High School/Last School)
3	Maria Carvalho	5-8	G	Gr.	TR	Lisbon, Portugal (Escola secundaria de vagos/ Utah Valley)
0	Prima Chellis	5-11	F	Gr.	TR	Phoenix, Arizona (Leading Edge Academy / SIU Edwardsville / South Mountain CC)
5	Kinley Falslev-Wickizer	5-8	G	Jr.	2L	Benson, Utah (Green Canyon HS)
24	Natalie Fraley	6-0	G	Fr.	HS	Kelso, Washington (Kelso HS)
20	Lillian Harris	6-2	F	So.	TR	Westminster, Maryland (Westminster HS / CCBC Essex)
23	Tiairra Hill-Brown	6-2	F	Fr.	HS	Las Vegas, Nevada (Ed W. Clark HS)
21	Mayson Kimball	5-11	G	Gr.	TR	Webster, New Hampshire (Tilton School / Merrimack College)
43	Ashya Klopfenstein	6-1	F	Sr.	TR	Howe, Indiana (Westview HS / Robert Morris / Dawson CC)
12	Olivia Mason	6-0	F	Sr.	TR	Kennett Square, Pennsylvania (Ursuline Academy / Niagara University)
10	Cristina Oliva	5-9	G	So.	TR	Davis, California (Davis HS / Sierra College)
1	Tamiah Robinson	5-9	G	Jr.	TR	Philadelphia, Pennsylvania (West Catholic HS / Labette Community College)
2	Isabella Tañedo	5-5	G	Fr.	HS	Laurel, Maryland (St. John-s College HS)
41	Abby Wahl	6-1	F	Gr.	TR	Santa Claus, Indiana (Heritage Hills HS / Eastern Illinois)
15	Olivia Wikstrom	6-1	G	Jr.	1L	Bainbridge Island, Washington (Bainbridge HS / Northern Colorado)

UTAH STATE STAFF

NAME	POSITION	EXPERIENCE	ALMA MATER
Kayla Ard	Head Coach	Third Year	Southeastern Louisiana, 2010
Ross James	Assistant Coach/Recruiting Coord.	First Year	Millsaps, 2009
Andre Gibbs	Assistant Coach/Recruiting Coord.	First Year	Philadelphia, 2016
McKenzie Mangino	Assistant Coach	First Year	Hawaii-Hilo, 2015

SUPPORT STAFF

Claire Gritt	Director of Operations	First Year (Second at USU)	Denver, 2021
Brianna Stewart	Graduate Manager	First Year	New Mexico Highlands, 2020
Priya Sidhu	Strength & Conditioning Coach	First Year	William & Mary, 2020
Paige Rajagopal	Athletic Trainer		

PRONUNCIATION GUIDE

Kayla **Ard** = Rhymes with 'hard'
 Kinley **Falslev-Wickizer** = False-lev-Wick-eye-zer
 Abby **Wahl** = Wall
 McKenzie **Mangino** = Man-jean-no
 Ashya **Klopfenstein** = Uh-shy-uh Klop-fen-stein
 Maria **Carvalho** = Car-vol-low

Isabella **Tañedo** = Tan-yed-oh
 Tiairra Hill-Brown = Tee-aria
 Tamiah Robinson = Tah-me-uh
 Cristina **Oliva** = Oh-leave-uh
 Olivia **Wikstrom** = Wick-strum
 Prima **Chellis** = Pree-muh Ch-ellis

ROSTER BREAKDOWN

BY CLASS:

Graduate Student (4)

Prima Chellis, Maria Carvalho, Mayson Kimball, Abby Wahl

Seniors (2)

Ashya Klopfenstein, Olivia Mason

Juniors (3)

Kinley Falslev-Wickizer, Tamiah Robinson, Olivia Wikstrom

Sophomores (2)

Cristina Oliva, Lillian Harris

Freshmen (3)

Natalie Fraley, Tiairra Hill-Brown, Isabella Tañedo

BY POSITION:

Guard (8)

Maria Carvalho, Kinley Falslev-Wickizer, Natalie Fraley, Mason Kimball, Cristina Oliva, Tamiah Robinson, Isabella Tañedo, Olivia Wikstrom

Forward (6)

Prima Chellis, Lillian Harris, Tiairra Hill-Brown, Ashya Klopfenstein, Olivia Mason, Abby Wahl

BY HEIGHT:

5-5 (1)

Isabella Tañedo

5-8 (2)

Maria Carvalho, Kinley Falslev-Wickizer

5-9 (2)

Cristina Oliva, Tamiah Robinson

5-11 (2)

Prima Chellis, Mayson Kimball

6-0 (2)

Natalie Fraley, Olivia Mason

6-1 (3)

Ashya Klopfenstein, Abby Wahl, Olivia Wikstrom

6-2 (2)

Lillian Harris, Tiairra Hill-Brown

HOME STATE/COUNTRY:

Indiana: 2

Maryland: 2

Pennsylvania: 2

Washington: 2

Arizona: 1

California: 1

Nevada: 1

New Hampshire: 1

Utah: 1

Portugal: 1

AROUND THE LEAGUE



2022-23 STANDINGS

	Conference			Overall		
	W	L	Pct.	W	L	Pct.
UNLV	0	0	.000	7	1	.875
San Diego State	0	0	.000	7	1	.875
Colorado State	0	0	.000	5	3	.625
New Mexico	0	0	.000	4	3	.571
Wyoming	0	0	.000	4	3	.571
Nevada	0	0	.000	3	3	.500
Fresno State	0	0	.000	4	5	.444
Air Force	0	0	.000	3	4	.429
Boise State	0	0	.000	3	5	.375
Utah State	0	0	.000	3	5	.375
San José State	0	0	.000	1	6	.143

UPCOMING GAMES

All times Mountain

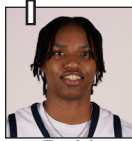
Monday, December 5 New Mexico Highlands at Wyoming	6:30 p.m.
Tuesday, December 6 BYU at Utah State Denver at Colorado State San José State at USC	11 a.m. 6:30 p.m. 8 p.m.
Wednesday, December 7 Sacramento State at San Diego State UCCS at Air Force Abilene Christian at New Mexico UNLV at Hawai'i-Hilo	Noon 6:30 p.m. 7 p.m. 9 p.m.
Thursday, December 8 Long Beach State at Nevada Northern Arizona at Fresno State	Noon 7 p.m.
Saturday, December 10 Utah Tech at Air Force San Francisco at Colorado State San Diego at San Diego State Saint Mary's at Boise State Utah State at LMU	1 p.m. 1 p.m. 2 p.m. 2 p.m. 3 p.m.
Sunday, December 11 Kansas City at Wyoming Santa Clara at Nevada UC Irvine at Fresno State New Mexico State at New Mexico UNLV at Hawai'i	1 p.m. 2 p.m. 2 p.m. 3 p.m. 5 p.m.

2022-23 PRESEASON POLL

1.	UNLV (26)	297
2.	New Mexico (2)	264
3.	Colorado State	232
4.	Wyoming	207
5.	San Diego State	200
6.	Nevada	142
7.	Boise State	140
8.	Air Force	125
9.	Fresno State	113
10.	San Jose State	67
11.	Utah State	61



PROJECTED STARTERS



Tamiah Robinson
G/F - 5-8 - Jr.
Philadelphia, Pennsylvania
8.4 ppg - 5.1 rpg - 3.6 apg
.329 FG% - .273 3FG% - .750 FT%



Maria Carvalho
G - 5-8 - Gr.
Lisbon, Portugal
13.0 ppg - 6.8 rpg - 3.3 apg
.374 FG% - .516 3FG% - .700 FT%



Olivia Wikstrom
G - 6-0 - Jr.
Bainbridge Island, Washington
11.3 ppg - 4.9 rpg - 1.2 apg
.370 FG% - .394 3FG% - .850 FT%



Mayson Kimball
G - 5-11 - Gr.
Webster, New Hampshire
12.0 ppg - 4.0 rpg - 1.0 spg
.449 FG% - .406 3FG% - .778 FT%



Abby Wahl
F - 6-1 - Gr.
Santa Claus, Indiana
5.0 ppg - 5.1 rpg - 1.0 apg
.395 FG% - .111 3FG% - .455 FT%

USU BENCH

#	Name	Yr.	Pos.	Ht.	ppg.	rpg.	FG%	3FG%	FT%
0	Prima Chellis	5-11	Forward	Gr.	4.3	2.5	.303	.222	.571
2	Isabella Tañedo	5-5	Guard	Fr.	0.3	0.6	.100	.000	.000
5	Kinley Falslev-Wickizer	5-8	Guard	Jr.	1.3	0.0	.143	.143	1.000
10	Cristina Oliva	5-9	Guard	Sr.	4.9	2.0	.273	.300	1.000
12	Olivia Mason	6-0	Forward	Sr.	1.0	1.7	.250	.000	.500
20	Lillian Harris	6-2	Forward	So.	0.0	0.0	.000	.000	.000
23	Tiairra Hill-Brown	6-2	Forward	Fr.	0.0	0.0	.000	.000	.000
24	Natalie Fraley	6-0	Guard	Fr.	5.5	2.5	.375	.667	.600
43	Ashya Klopfenstein	6-1	Forward	Sr.	3.0	1.5	.333	.000	1.000

SCOUTING THE COUGARS

Head coach Amber Whiting is in her first season at the helm of the Cougars after spending four seasons as the head coach of the Burley High School girl's basketball team in Burley, Idaho. Last season, BYU went 26-4 in their 21st and final season under Jeff Judkins. The Cougars lost to Gonzaga, 71-59, in the West Coast Conference finals and were named a 6-seed in the NCAA tournament before losing to No. 11-seeded Villanova, 61-57, in the first round.

This season, BYU has opened the year at 3-5, averaging 64.8 points per game and allowing 65.9 points per game to opponents. The Cougars are led in scoring and rebounding by Lauren Gustin at 16.4 points and 14.0 rebounds per game. Nani Falatea chips in with 13.4 points per game and leads the team with 4.5 assists per contest, also ranking second on the team with 5.1 rebounds per contest. Kaylee Smiler and Rose Bubakar also average double figures with 10.7 and 10.4 points per game. As a team, the Cougars are shooting 45.3 from the floor, 33.9 from 3-point range and 74.6 percent from the free throw line. Opponents have managed marks of 39.2 and 36.2 from the floor and 3-point territory, respectively. The Cougars have rebounded 37.5 per game, outrebounding opponents by an average of 6.2 rebounds per game. BYU averages 13.6 assists per game to 15.6 turnovers and have forced 9.3 turnovers per game from their opponents.

SCOUTING THE LIONS

Head coach Aarika Hughes is in her second season as coach of the Lions. Loyola Marymount went 11-19 in her first season, including a 4-13 mark in West Coast Conference play and a quarterfinals run in the WCC tournament. This season, LMU has started 1-7 with a lone 62-51 win over Cal State San Marcos.

The Lions are averaging 55.1 points per game so far this season and have surrendered 72.4 points per game to opponents. LMU has shot 36.3 from the floor, 27.4 on 3-point attempts and 67.0 percent from the FT line. Opponents have shot 48.1 percent from the field and 34.4 percent behind the arc. The Lions have rebounded 30.5 boards per game and have been outrebounded by 5.0 rebounds per game by opponents. Loyola Marymount averages 10.1 assists per game to 17.5 turnovers and have forced opponents into 16.1 turnovers per game. The Lions are led in scoring by Ariel Johnson at 12.9 points per game. Johnson also leads the Lions with 2.3 assists per game. Alexis Mark leads the team at 5.4 rebounds per game, also adding 9.9 points per contest, with Amaya Oliver close behind at 4.5 boards per contest.

ICYMI

The Aggies went 2-0 against a pair of in-state foes last week in Weber State and Utah Valley. On the road at Weber State, the Aggies snapped a five-game losing skid with a 74-69 victory. USU was led by junior guard **Olivia Wikstrom** with 19 points, including a 4-6 showing from 3-point range. Graduate guard **Maria Carvalho** added 17 points plus team-best marks of seven rebounds and five assists. Carvalho also hit two 3-pointers as part of a personal 7-0 run to clinch the win for Utah State late in the fourth quarter. Junior guard **Tamiah Robinson** also had 12 points plus seven rebounds while graduate forward **Prima Chellis** made it four Aggies in double figures with 10 points.

USU welcomed the Wolverines to the Spectrum and pulled out a 65-55 win. Carvalho led the Aggies with 21 points plus six rebounds and a team-high four steals. Graduate guard Mayson Kimball added 12 points on 3-of-5 shooting plus a perfect 5-of-5 performance from the free throw line. Wikstrom chipped in 10 points and led USU with seven rebounds. Both Robinson and Chellis dished out four assists to lead the Aggies. Freshman Natalie Fraley, in only her second collegiate appearance, finished with eight points on 2-of-3 shooting from 3-point range, including the game-sealing tray with two minutes remaining.

SIX DEGREES OF SEPARATION

Seven out of 16 players on BYU's roster hail from the state of Utah. The Cougars also return seven players who saw action against Utah State last season, led by Lauren Gustin, BYU's lone returning starter, who scored 18 points in BYU's 101-74 victory. LMU has two MW transfers on its roster in junior forwards Alexis Mark and Kimora Sykes, both from Boise State. Mark started 23 games for the Broncos her freshman year, averaging 9.4 points and 6.0 rebounds per game. Mark played two games against USU, including a season-high 16 points alongside 10 rebounds. Mark also grabbed 13 rebounds to go with seven points in her second game against the Aggies. Sykes appeared in 23 contests as a freshman at Boise State, including two games against USU.

RANGEFINDERS

• Utah State is off to one of its best shooting seasons from behind the 3-point line in program history. The Aggies are currently shooting 35.6 percent (63-of-177) on 3-point attempts, ranking as the second-best percentage in the Mountain west and tied for 66th in the nation. It also stands as the second-best team percentage for a season in USU history behind only the 2011-12 squad's mark of 38.4 percent. USU has also made 10 3-point field goals in a game three times this season, reaching the mark against both Arkansas State, Weber State and Utah Valley. This is the first season in which the Aggies have registered at least three games with double-digit three-pointers since the 2013-14 season.

• Utah State went 8-16 on 3-point attempts versus Southeastern Louisiana, the first time the team has shot 50 percent or better from behind the arc since shooting 13-24 (54.2 percent) in a 76-66 win versus Wyoming on January 22, 2022.

PUTTING IN THE ARD WORK

Utah State head coach **Kayla Ard** put in a record of 8-10 in nonconference play across her first two seasons at the helm of the Aggies, the best record by an Aggie coach in nonconference play in their first two seasons since **Cindy Perkins** in 1978-80. This season, Ard became the first coach in USU history to win her first three season openers. At 11-15 in non-conference play during her tenure, Ard currently ranks third all-time at Utah State and holds the best multi-season non-conference win percentage since the program's reinstatement in 2003.

SPREADING IT AROUND

Utah State has had five different players lead the team in scoring so far this season. Sophomore guard **Cristina Oliva**, graduate guards **Maria Carvalho** and **Mayson Kimball**, and junior guards **Tamiah Robinson** and **Olivia Wikstrom** have each led the Aggies in points this season with Kimball leading the way with three games under her belt as USU's leading scorer. Additionally, the Aggies have had 23 instances of a players scoring 10 or more points this season with six different players so far accomplishing the feat. Carvalho and Wikstrom lead the team in double-digit scoring efforts with six apiece.

MATCHUP

Kayla Ard 11-19 18-44 18-44	Head Coach 2021-22 Record School Record Career Record	Amber Whiting 26-4 3-5 3-5
--------------------------------------	--	-------------------------------------

TEAM LEADERS

Maria Carvalho (13.0)	Points	Lauren Gustin (16.4)
Maria Carvalho (6.8)	Rebounds	Lauren Gustin (14.0)
Tamiah Robinson (3.6)	Assists	Nani Falatea (4.5)
Prima Chellis (1.5)	Steals	Nani Falatea (1.1)
Abby Wahl (0.5)	Blocks	Lauren Gustin (0.8)
Maria Carvalho (.516)	3FG (min. 20 att.)	Kaylee Smiler (.500)

TEAM PER GAME COMPARISON

62.4	Points Scored	▶	64.8
72.1	Points Allowed	▶▶	65.9
-9.7	Scoring Margin	▶▶▶	-1.1
37.0	Rebounds	▶▶▶	37.5
-1.1	Rebounding Margin	▶▶▶▶	+6.3
12.3	Assists	▶▶▶▶	13.6
8.3	Steals	▶▶▶▶▶	4.0
2.3	Blocks	▶▶▶▶▶▶	2.5
17.1	Turnovers	▶▶▶▶▶▶▶	15.6
15.6	Turnovers Forced	▶▶▶▶▶▶▶▶	9.3
16.1	Fouls	▶▶▶▶▶▶▶▶▶	15.3
.352	FG%	▶▶▶▶▶▶▶▶▶▶	.453
.448	FG% Allowed	▶▶▶▶▶▶▶▶▶▶▶	.392
.356	3FG%	▶▶▶▶▶▶▶▶▶▶▶▶	.339
.340	3FG% Allowed	▶▶▶▶▶▶▶▶▶▶▶▶▶	.362
.713	FT%	▶▶▶▶▶▶▶▶▶▶▶▶▶▶	.746

SERIES HISTORY

OVERALL: USU trails, 16-23

In Logan: 2-17	Neutral: 0-3	In Provo: 2-19
Last 5 games	Last 5 games	Last 5 games
L, 66-87 - 12/7/20	L, 67-105 - 1/2/87	L, 74-101 - 11/23/21
L, 57-62 (OT) - 11/20/18	L, 63-118 - 1/8/83	L, 50-67 - 11/26/19
L, 40-60 - 12/17/16	L, 68-71 - 1/7/78	W, 76-69 - 12/6/17
L, 58-62 (OT) - 12/22/14		L, 69-81 - 11/24/15
L, 65-73 - 12/17/11		L, 74-84 - 12/21/13

MATCHUP

Kayla Ard 11-19 18-44 18-44	Head Coach 2021-22 Record School Record Career Record	Aarika Hughes 11-19 11-19 11-19
--------------------------------------	--	--

TEAM LEADERS

Maria Carvalho (13.0)	Points	Ariel Johnson (12.9)
Maria Carvalho (6.8)	Rebounds	Alexis Mark (5.4)
Tamiah Robinson (3.6)	Assists	Ariel Johnson (2.3)
Prima Chellis (1.5)	Steals	Ariel Johnson (1.8)
Abby Wahl (0.5)	Blocks	Khari Clark (0.9)
Maria Carvalho (.516)	3FG (min. 20 att.)	Nicole Rodriguez (.419)

TEAM PER GAME COMPARISON

62.4	Points Scored	◀	55.1
72.1	Points Allowed	◀◀	72.4
-9.7	Scoring Margin	◀◀◀	-17.3
37.0	Rebounds	◀◀◀	30.5
-1.1	Rebounding Margin	◀◀◀◀	-5.0
12.3	Assists	◀◀◀◀	10.1
8.3	Steals	◀◀◀◀◀	8.1
2.3	Blocks	◀◀◀◀◀	1.6
17.1	Turnovers	◀◀◀◀◀◀	17.5
15.6	Turnovers Forced	▶▶▶▶▶▶▶▶	16.1
16.1	Fouls	▶▶▶▶▶▶▶▶▶	18.6
.352	FG%	▶▶▶▶▶▶▶▶▶▶	.363
.448	FG% Allowed	▶▶▶▶▶▶▶▶▶▶▶	.481
.356	3FG%	▶▶▶▶▶▶▶▶▶▶▶▶	.274
.340	3FG% Allowed	▶▶▶▶▶▶▶▶▶▶▶▶▶	.344
.713	FT%	▶▶▶▶▶▶▶▶▶▶▶▶▶▶	.670

SERIES HISTORY

OVERALL: Series tied, 2-2

In Logan: 1-1	Neutral: 0-0	In Los Angeles: 1-1
Last 5 games	Last 5 games	Last 5 games
L, 66-69 - 11/19/21		L, 81-98 - 11/17/12
W, 100-58 - 11/13/13		W, 73-61 - 12/18/85

DOUBLING UP

Both **Tamiah Robinson** and **Olivia Wikstrom** recorded a double-double in USU's game versus Arkansas State, the first time two Aggies have registered double-doubles in the same game since Hailey Bassett (18/12) and Shannon Dufficy (14/12) accomplished the feat against Colorado State on January 19, 2019. Robinson finished with 10 points and 10 assists while Wikstrom recorded 16 points and 10 rebounds.

FULL-TIME WORKER

Graduate guard **Maria Carvalho** played all 40 minutes in Utah State's last game versus Southeastern Louisiana, the first Aggie to not leave the floor in a game this season. Last year, USU had five instances where a player played all 40 minutes of a game. Carvalho currently ranks second in the conference in minutes played at 35.8 minutes per contest.

FULL SPEED AHEAD

Utah State is currently tied for third among Mountain West teams for most possessions per game. The Aggies average 72.6 offensive possessions per game, tied alongside UNLV for the 128th-fastest pace in the nation. USU is only bested by Air Force (73.0 possessions per game) and New Mexico (76.1 possessions per game) among MW teams.

SECOND CHANCES

Utah State currently sits among the conference's best offensive rebounding teams. The Aggies rank third in the conference with 12.9 offensive rebounds per game. Utah State also boasts three players in the top-20 in the conference for rebounds per game as **Maria Carvalho** (6.8, 8th), **Tamiah Robinson** (5.3, T-17th) and **Abby Wahl** (5.0, 19th) all rank among the best in the MW.

CAREER BESTS

Several Aggies recorded career-best marks last week for Utah State. Against Weber State, junior guard **Olivia Wikstrom** set new career marks with seven made field goals and 37 minutes played, also tying her career-best mark of four made 3-pointers. Freshman **Isabella Tañedo** and **Natalie Fraley** also set new career-bests. Tañedo set high-water marks in points (two) and made field goals (one), and tied her career-high of one steal. Fraley made her collegiate debut against the Wildcats and versus Utah Valley, she set personal-best marks in points (eight), made field goals (two), attempted field goals (six), made free throws (two), attempted FTs (three), rebounds (four), assists (one), steals (one) and minutes played (15). Also versus the Wolverines, junior guard **Tamiah Robinson** tied her career-high in free throws made and attempted, going 4-of-4 from the FT line in the victory. Graduate forward **Prima Chellis** tied her career-high with four assists.

COMPARATIVELY SPEAKING

Utah State ranks among the upper half of the Mountain West in several statistics, including 3-point percentage (35.6 percent, 2nd), offensive rebounds per game (12.9, 3rd) and 3-point field goals per game (7.9, 3rd).

Individually, graduate guard **Mayson Kimball** ranks 16th in the conference in points per game (12.0), 11th in free throw percentage (77.8 percent) and is tied for 12th in 3-point field goals per game (1.6). Graduate guard **Maria Carvalho** ranks seventh with 13.0 points per game, fourth in minutes per game (33.5), tied for sixth in assists per game (3.3), sixth in assist/turnover ratio (1.3), seventh in rebounds per game (6.8), 12th in offensive rebounds per game (2.3) and T-4th in 3-point field goals per game (2.0). Junior guard **Tamiah Robinson** is tied for fourth in assists per game (3.6), seventh in assist-turnover ratio (1.3), eighth in minutes per game (31.4) and tied for 16th in rebounds per game (5.1). Graduate forward **Abby Wahl** is tied for 10th in offensive rebounds per game (2.4), T-17th in blocks (0.5), 20th in minutes per game (27.9) and tied for 16th in rebounds per game (5.1). Junior guard **Olivia Wikstrom** ranks among the top-20 in the MW for points per game (11.3, 19th), 3-point field goals per game (1.6, T-12th), rebounds per game (4.9, T-20th) and blocks per game (0.5, T-17th).

WELL TRAVELED

Utah State has players from nine different states on its roster, plus one international player in graduate senior **Maria Carvalho**. Additionally, the Aggies have no more than two players from any given state with Utah State possessing two players each from Indiana, Maryland, Pennsylvania and Washington.

WHAT'S RETURNING?

USU returns two letterwinners from last year's squad in juniors **Kinley Falslev-Wickizer** and **Olivia Wikstrom**. Falslev-Wickizer returns after averaging 1.8 points per game and shooting 14-43 (.326) on 3-pointers last season. Wikstrom averaged 4.5 points per game in addition to 2.9 rebounds, 1.0 assists and 0.9 steals per game.

TRANSFER-MATION COMPLETE

The Aggies welcome nine transfers in advance of the 2022-23 season. Utah State brings in four graduate transfers in **Prima Chellis** (SIU Edwardsville), **Maria Carvalho** (Utah Valley), **Mayson Kimball** (Merrimack College) and **Abby Wahl** (Eastern Illinois). A further two seniors join USU this season in **Olivia Mason** (Niagara) and **Ashya Klopfenstein** (Robert Morris). **Tamiah Robinson** (Lafayette Community College), **Cristina Oliva** (Sierra College) and **Lillian Harris** (CCBC Essex) also join Utah State after beginning their collegiate careers elsewhere.

USU also has three freshmen joining the roster for 2022-23 in **Isabella Tañedo** (Laurel, Maryland), **Tiairra Hill-Brown** (Las Vegas, Nevada) and **Natalie Fraley** (Kelso, Washington).

AGGIES™

2022-23 STARTERS

Date	Opponent					
Oct. 1	Fort Lewis College (EXH)	ROBINSON	CARVALHO	WIKSTROM	MASON	WAHL
Nov. 7	College of Idaho	ROBINSON	CARVALHO	OLIVA	KIMBALL	WAHL
Nov. 11	Southeastern Louisiana	ROBINSON	CARVALHO	OLIVA	KIMBALL	WAHL
Nov. 15	Utah Tech	ROBINSON	CARVALHO	OLIVA	KIMBALL	WAHL
Nov. 19	Arkansas State	ROBINSON	CARVALHO	OLIVA	KIMBALL	WAHL
Nov. 23	Ball State	ROBINSON	CARVALHO	WIKSTROM	KIMBALL	WAHL
Nov. 26	USC	ROBINSON	CARVALHO	WIKSTROM	KIMBALL	WAHL
Dec. 1	Weber State	ROBINSON	CARVALHO	WIKSTROM	KIMBALL	WAHL
Dec. 3	Utah Valley	ROBINSON	CARVALHO	WIKSTROM	KIMBALL	WAHL
Dec. 6	BYU					
Dec. 10	Loyola Marymount					
Dec. 20	Eastern Washington					
Dec. 29	Air Force					
Dec. 31	San Diego State					
Jan. 5	Colorado State					
Jan. 7	Boise State					
Jan. 14	Nevada					
Jan. 16	Fresno State					
Jan. 19	Air Force					
Jan. 21	San Jose State					
Jan. 26	Wyoming					
Jan. 28	New Mexico					
Feb. 2	Colorado State					
Feb. 4	Nevada					
Feb. 9	Wyoming					
Feb. 16	Fresno State					
Feb. 18	Boise State					
Feb. 23	UNLV					
Feb. 25	New Mexico					
Feb. 28	San Jose State					

2022-23 GAME-BY-GAME

Opponent	Date	Score	Total		3-Pointers		Free throws		Rebounds										
			FG-FGA	PCT	3FG-3FGA	PCT	FT-FTA	PCT	OFF	DEF	TOT	AVG	PF	A	TO	BLK	STL	PTS	AVG
Col. of Idaho	11/07/2022	75-58 W	26-68	.382	9-23	.391	14-21	.667	17	29	46	46.0	13	15	14	0	16	75	75.0
Southeastern La.	11/11/2022	68-78 L	23-51	.451	8-16	.500	14-22	.636	7	22	29	37.5	13	13	12	2	6	68	71.5
at Utah Tech	11/15/2022	57-95 L	22-71	.310	7-33	.212	6-10	.600	17	27	44	39.7	13	11	18	4	4	57	66.7
at Arkansas St.	11/19/2022	57-63 L	19-60	.317	10-22	.455	9-12	.750	14	28	42	40.3	20	13	21	3	6	57	64.3
Ball St.	11/23/2022	55-80 L	18-56	.321	4-17	.235	15-19	.789	14	24	38	39.8	14	9	22	5	7	55	62.4
at Southern California	11/26/2022	48-79 L	20-63	.317	5-19	.263	3-4	.750	16	13	29	38.0	13	10	20	2	9	48	60.0
at Weber St.	12/01/2022	74-69 W	26-61	.426	10-24	.417	12-15	.800	8	27	35	37.6	22	12	16	1	7	74	62.0
Utah Valley	12/03/2022	65-55 W	18-58	.310	10-23	.435	19-26	.731	10	23	33	37.0	21	15	14	1	11	65	62.4
Total		499	172-488	.352	63-177	.356	92-129	.713	103	193	296	37.0	129	98	137	18	66	499	62.4
Opponents		577	213-475	.448	50-147	.340	101-138	.732	80	225	305	38.1	124	125	125	50	72	577	72.1

Utah St. Averages

Games Played	Points/game	FG Pct	3FG Pct	FT Pct	Rebounds/game	Assists/game	Turnovers/game	Assist/Turnover ratio	Steals/game	Blocks/game
8	62.4	35.2	35.6	71.3	37.0	12.3	17.1	0.7	8.3	2.3

2022-23 COMBINED STATISTICS

Game Records

Record	Overall	Home	Away	Neutral
ALL GAMES	3-5	2-2	1-3	0-0
CONFERENCE	0-0	0-0	0-0	0-0
NON-CONFERENCE	3-5	2-2	1-3	0-0

Score by Periods

Team	1st	2nd	3rd	4th	OT	TOT
Utah St.	127	103	124	145	0	499
Opponents	133	142	146	156	0	577

Team Box Score

No.	Player				Total		3-Point		F-Throw		Rebounds											
		GP-GS	MIN	AVG	FG-FGA	FG%	3FG-3FGA	3FG%	FT-FTA	FT%	OFF	DEF	TOT	AVG	PF	DQ	A	TO	BLK	STL	PTS	AVG
3	CARVALHO, Maria	8-8	268:15	33.5	37-99	.374	16-31	.516	14-20	.700	18	36	54	6.8	17	0	26	20	1	12	104	13.0
21	KIMBALL, Mayson	8-8	218:05	27.3	31-69	.449	13-32	.406	21-27	.778	8	24	32	4.0	30	2	7	21	2	9	96	12.0
15	WIKSTROM, Olivia	8-4	215:36	26.9	30-81	.370	13-33	.394	17-20	.850	11	28	39	4.9	5	0	11	20	4	8	90	11.3
1	ROBINSON, Tamiah	8-8	254:51	31.9	26-79	.329	6-22	.273	9-12	.750	9	32	41	5.1	16	1	29	23	3	11	67	8.4
24	FRALEY, Natalie	2-0	21:16	10.6	3-8	.375	2-3	.667	3-5	.600	1	4	5	2.5	2	0	1	1	0	1	11	5.5
41	WAHL, Abby	8-8	222:46	27.8	17-43	.395	1-9	.111	5-11	.455	19	22	41	5.1	14	0	9	8	4	5	40	5.0
10	OLIVA, Cristina	8-4	143:36	17.9	12-44	.273	9-30	.300	6-6	1.000	5	11	16	2.0	8	0	4	17	3	3	39	4.9
0	CHELLIS, Prima	8-0	127:35	15.9	10-33	.303	2-9	.222	12-21	.571	7	13	20	2.5	15	0	9	12	1	12	34	4.3
43	KLOPFENSTEIN, Ashya	2-0	24:21	12.2	2-6	.333	0-0	.000	2-2	1.000	0	3	3	1.5	1	0	1	3	0	0	6	3.0
5	FALSLEV-WICKIZER, Kinley	3-0	23:33	7.9	1-7	.143	1-7	.143	1-1	1.000	0	0	0	0.0	2	0	1	1	0	1	4	1.3
12	MASON, Olivia	6-0	43:43	7.3	2-8	.250	0-0	.000	2-4	.500	5	5	10	1.7	12	0	0	3	0	2	6	1.0
2	TANEDO, Isabella	7-0	33:12	4.7	1-10	.100	0-1	.000	0-0	.000	1	3	4	0.6	7	0	0	5	0	2	2	0.3
20	HARRIS, Lillian	1-0	01:28	1.5	0-0	.000	0-0	.000	0-0	.000	0	0	0	0.0	0	0	0	0	0	0	0	0.0
23	HILL-BROWN, Tiairra	2-0	01:45	0.9	0-1	.000	0-0	.000	0-0	.000	0	0	0	0.0	0	0	0	0	0	0	0	0.0
Team											19	12	31					3				
Total		8	1600		172-488	.352	63-177	.356	92-129	.713	103	193	296	37.0	129	3	98	137	18	66	499	62.4
Opponents		8	1600		213-475	.448	50-147	.340	101-138	.732	80	225	305	38.1	124	3	125	125	50	72	577	72.1

Team Statistics

	USU	OPP
Scoring	499	577
Points per game	62.4	72.1
Scoring margin	-9.8	-
Field goals-att	172-488	213-475
Field goal pct	.352	.448
3 point fg-att	63-177	50-147
3-point FG pct	.356	.340
3-pt FG made per game	7.9	6.3
Free throws-att	92-129	101-138
Free throw pct	.713	.732
F-Throws made per game	11.5	12.6
Rebounds	296	305
Rebounds per game	37.0	38.1
Rebounding margin	-1.1	-
Assists	98	125
Assists per game	12.3	15.6
Turnovers	137	125
Turnovers per game	17.1	15.6
Turnover margin	-1.5	-
Assist/turnover ratio	0.7	1.0
Steals	66	72
Steals per game	8.3	9.0
Blocks	18	50
Blocks per game	2.3	6.3
Winning streak	2	-
Home win streak	1	-
Attendance	1167	1768
Home games-Avg/Game	4-292	4-442
Neutral site-Avg/Game	-	0-0

Team Results

Date	Opponent		Score	Att.
11/07/2022	Col. of Idaho	W	75-58	282
11/11/2022	Southeastern La.	L	68-78	381
11/15/2022	at Utah Tech	L	57-95	0
11/19/2022	at Arkansas St.	L	57-63	1146
11/23/2022	Ball St.	L	55-80	122
11/26/2022	at Southern California	L	48-79	316
12/01/2022	at Weber St.	W	74-69	306
12/03/2022	Utah Valley	W	65-55	382

2022-23 GAME HIGHS

Opponent	Date	Score	Points	Rebounds	Assists	Steals	Blocks
Fort Lewis College	10/28/22	74-45	Robinson (19)	Wahl (15)	Robinson (4)	Robinson (2) Wikstrom (2)	Falslev-Wickizer (1) Robinson (1)
College of Idaho	11/7/22	75-58	Oliva (17)	Carvalho (8)	Robinson (5)	Chellis (5)	N/A
SE Louisiana	11/11/22	68-78	Kimball (24)	Carvalho (8)	Carvalho (4) Robinson (4)	Wikstrom (3)	Kimball (1) Wahl (1)
Utah Tech	11/15/22	57-95	Kimball (14)	Wahl (10)	Oliva (3) Robinson (3)	Carvalho (1) Chellis (1) Falslev-Wickizer (1) Robinson (1)	Robinson (2) Wahl (2)
Arkansas State	11/19/22	57-63	Wikstrom (16)	Robinson (10) Wikstrom (10)	Robinson (5)	Kimball (2) Robinson (2)	Kimball (1) Oliva (1) Wikstrom (1)
Ball State	11/23/22	55-80	Kimball (21)	Kimball (8)	Carvalho (5)	Wahl (3)	Wikstrom (3)
USC	11/26/22	48-79	Robinson (16)	Mason (6)	Robinson (4)	Wikstrom (3)	Carvalho (1) Oliva (1)
Weber State	12/1/22	74-69	Wikstrom (19)	Carvalho (7) Robinson (7)	Carvalho (5)	Kimball (3)	Oliva (1)
Utah Valley	12/3/22	65-55	Carvalho (21)	Wikstrom (7)	Chellis (4) Robinson (4)	Carvalho (4)	Chellis (1)
BYU	12/6/22						
Loyola Marymount	12/10/22						
Eastern Washington	12/20/22						
Air Force	12/29/22						
San Diego State	12/31/22						
Colorado State	1/5/23						
Boise State	1/7/23						
Nevada	1/14/23						
Fresno State	1/16/23						
Air Force	1/19/23						
San Jose State	1/21/23						
Wyoming	1/26/23						
New Mexico	1/28/23						
Colorado State	2/2/23						
Nevada	2/4/23						
Wyoming	2/9/23						
Fresno State	2/16/23						
Boise State	2/18/23						
UNLV	2/23/23						
New Mexico	2/25/23						
San Jose State	2/28/23						

2022-23 GAME-BY-GAME STATISTICS

Points-Rebounds-Assists

Opponent	Date	Score	0 CHELLIS	1 ROBINSON	2 TANEDO	3 CARVALHO	5 FALSLEV-WICKIZER	10 OLIVA	12 MASON
Fort Lewis (EXH)	10/28/22	74-45	DNP	19-5-4	0-1-0	12-7-3	5-0-0	11-3-0	9-6-0
College of Idaho	11/07/22	75-58	10-5-1	6-8-5	0-0-0	16-9-4	0-0-1	17-5-4	1-0-0
SE Louisiana	11/11/22	68-78	4-5-1	6-4-4	DNP	17-8-4	0-0-0	3-1-1	DNP
Utah Tech	11/15/22	57-95	5-5-0	2-2-3	0-1-0	13-8-2	4-0-0	6-4-3	0-1-0
Arkansas State	11/19/22	57-63	1-0-0	10-10-5	0-0-0	10-8-4	DNP	8-2-0	0-1-0
Ball State	11/23/22	55-80	0-1-1	7-6-2	0-3-0	5-5-5	DNP	2-1-0	1-2-0
USC	11/26/22	48-79	2-2-1	16-2-4	0-0-0	5-3-1	DNP	3-1-0	4-6-0
Weber State	12/1/22	74-69	10-0-1	12-7-2	2-0-0	17-7-5	DNP	0-2-0	DNP
Utah Valley	12/3/22	65-55	2-2-4	8-2-4	0-0-0	21-6-1	DNP	0-0-0	0-0-0

BYU

Loyola Marymount

Eastern Washington

Air Force

San Diego State

Colorado State

Boise State

Nevada

Fresno State

Air Force

San Jose State

Wyoming

New Mexico

Colorado State

Nevada

Wyoming

Fresno State

Boise State

UNLV

New Mexico

San Jose State

Opponent	Date	Score	15 WIKSTROM	20 HARRIS	21 KIMBALL	23 HILL-BROWN	24 FRALEY	41 WAHL	43 KLOPFENSTEIN
Fort Lewis (EXH)	10/28/22	74-45	6-4-3	2-4-0	DNP	0-4-1	DNP	10-15-0	DNP
College of Idaho	11/07/22	75-58	6-3-1	DNP	10-4-1	0-0-0	DNP	9-5-2	DNP
SE Louisiana	11/11/22	68-78	10-2-2	DNP	24-6-1	DNP	DNP	4-1-0	DNP
Utah Tech	11/15/22	57-95	5-4-1	0-0-0	14-5-2	0-0-0	DNP	8-10-0	DNP
Arkansas State	11/19/22	57-63	16-10-1	DNP	4-2-2	DNP	DNP	8-9-1	DNP
Ball State	11/23/22	55-80	12-7-0	DNP	21-8-0	DNP	DNP	7-1-1	DNP
USC	11/26/22	48-79	12-1-1	DNP	6-2-1	DNP	DNP	0-4-2	DNP
Weber State	12/1/22	74-69	19-5-2	DNP	5-2-0	DNP	3-1-0	2-5-1	4-3-1
Utah Valley	12/3/22	65-55	10-7-3	DNP	12-3-0	DNP	8-4-1	2-6-2	2-0-0

BYU

Loyola Marymount

Eastern Washington

Air Force

San Diego State

Colorado State

Boise State

Nevada

Fresno State

Air Force

San Jose State

Wyoming

New Mexico

Colorado State

Nevada

Wyoming

Fresno State

Boise State

UNLV

New Mexico

San Jose State

2022-23 GAME-BY-GAME STATISTICS

Opponent	Utah State/Opponent					
	Points In Paint	Points Off TO	2nd Chance Points	Fast Break Points	Bench Points	Largest Lead
Fort Lewis (EXH)	38/22	23/5	14/9	9/5	18/26	39/2
College of Idaho	34/32	14/4	15/4	12/2	17/14	24/-
SE Louisiana	26/36	10/15	11/9	3/5	14/16	3/17
Utah Tech	30/48	5/18	22/8	4/17	14/18	3/38
Arkansas State	16/34	4/15	10/10	0/12	17/12	12/13
Ball State	26/36	10/32	9/14	3/17	3/40	2/32
USC	24/30	19/20	9/7	6/15	9/20	-/36
Weber State	28/28	20/11	7/15	17/10	19/6	7/9
Utah Valley	12/30	29/15	9/12	9/4	9/15	10/3
BYU						
Loyola Marymount						
Eastern Washington						
Air Force						
San Diego State						
Colorado State						
Boise State						
Nevada						
Fresno State						
Air Force						
San Jose State						
Wyoming						
New Mexico						
Colorado State						
Nevada						
Wyoming						
Fresno State						
Boise State						
UNLV						
New Mexico						
San Jose State						
TOTAL	234/296	134/135	106/88	63/87	120/167	49/41

2022-23 MOUNTAIN WEST STATISTICS

as of December 4, 2022

TEAM	INDIVIDUAL	
	All	Conference Only
Scoring Offense	62.4 (8th)	N/A
Scoring Defense	72.1 (11th)	N/A
Scoring Margin	-9.8 (10th)	N/A
Field Goal %	35.2% (10th)	N/A
Field Goal % Def	44.8% (10th)	N/A
3-Pt. Field Goal %	35.6% (2nd)	N/A
3-Pt. Field Goals per Game	7.9 (3rd)	N/A
3-Pt. Field Goal % Def	34.0% (10th)	N/A
Free Throw %	71.3% (7th)	N/A
Free Throws Made per Game	11.5 (7th)	N/A
Free Throw Attempts per Game	16.1 (7th)	N/A
Rebounding	37.0 (7th)	N/A
Rebounding Margin	-1.1 (7th)	N/A
Offensive Rebounds per Game	12.9 (3rd)	N/A
Defensive Rebounds per Game	24.1 (9th)	N/A
Assists	12.3 (7th)	N/A
Turnovers per Game	17.1 (10th)	N/A
Assist/Turnover Ratio	0.7 (9th)	N/A
Blocks	2.3 (9th)	N/A
Steals	8.3 (8th)	N/A
Turnovers Forced per Game	15.6 (8th)	N/A
Turnover Margin	-1.5 (10th)	N/A
Home Attendance per Game	291 (11th)	N/A
	Scoring	All
	Maria Carvalho	13.0 ppg (7th)
	Mayson Kimball	12.0 ppg (16th)
	Olivia Wikstrom	11.3 ppg (19th)
	3FG Per Game	All
	Maria Carvalho	2.0 (T-4th)
	Mayson Kimball	1.6 (T-12th)
	Olivia Wikstrom	1.6 (T-12th)
	FT Percentage (min. 2.5 FTA per Game)	All
	Mayson Kimball	77.8% (11th)
	Rebounding	All
	Maria Carvalho	6.8 rpg (7th)
	Tamiah Robinson	5.1 rpg (T-16th)
	Abby Wahl	5.1 rpg (T-16th)
	Olivia Wikstrom	4.9 rpg (T-20th)
	Offensive Rebounds Per Game	All
	Abby Wahl	2.4 orpg (T-10th)
	Maria Carvalho	2.3 orpg (12th)
	Defensive Rebounds Per Game	All
	Maria Carvalho	4.5 drpg (8th)
	Tamiah Robinson	4.0 drpg (11th)
	Olivia Wikstrom	3.5 drpg (17th)
	Assists	All
	Tamiah Robinson	3.6 apg (T-4th)
	Maria Carvalho	3.3 apg (T-6th)
	Assist/Turnover Ratio (min. 3 assists per game)	All
	Maria Carvalho	1.3 (6th)
	Tamiah Robinson	1.3 (7th)
	Blocks	All
	Abby Wahl	0.5 bpg (T-17th)
	Olivia Wikstrom	0.5 bpg (T-17th)
	Steals	All
	Prima Chellis	1.5 (T-19th)
	Maria Carvalho	1.5 (T-19th)
	Minutes Per Game	All
	Maria Carvalho	33.5 mpg (4th)
	Tamiah Robinson	31.4 mpg (8th)
	Abby Wahl	27.9 mpg (20th)

2021-22 GAME-BY-GAME

Opponent	Date	Score		Total		3-Pointers		Free throws		Rebounds										
				FG-FGA	PCT	3FG-3FGA	PCT	FT-FTA	PCT	OFF	DEF	TOT	AVG	PF	A	TO	BLK	STL	PTS	AVG
Westminster (UT)	11/09/2021	83-78	W	28-70	.400	9-19	.474	18-28	.643	20	23	43	43.0	12	13	9	1	9	83	83.0
Cal St. Fullerton	11/13/2021	85-75	W	24-56	.429	8-21	.381	29-37	.784	10	23	33	38.0	22	16	15	2	14	85	84.0
at California	11/16/2021	49-81	L	18-64	.281	2-15	.133	11-17	.647	15	26	41	39.0	28	5	23	3	2	49	72.3
LMU (CA)	11/19/2021	66-69	L	25-69	.362	4-17	.235	12-18	.667	14	25	39	39.0	15	12	17	3	12	66	70.8
at BYU	11/23/2021	74-101	L	24-65	.369	12-32	.375	14-17	.824	15	15	30	37.2	18	15	18	0	7	74	71.4
at Southeastern La.	11/27/2021	73-71	W	23-57	.404	13-34	.382	14-14	1.000	8	20	28	35.7	18	14	19	5	9	73	71.7
Utah Tech	12/01/2021	81-64	W	34-72	.472	6-23	.261	7-13	.538	13	36	49	37.6	20	15	17	5	8	81	73.0
Arkansas St.	12/08/2021	66-65	W	22-65	.338	8-34	.235	14-22	.636	14	29	43	38.3	14	13	17	1	8	66	72.1
at Ball St.	12/11/2021	55-81	L	21-60	.350	5-21	.238	8-9	.889	13	28	41	38.6	8	7	24	0	11	55	70.2
at Montana	12/20/2021	80-103	L	28-76	.368	9-27	.333	15-18	.833	14	16	30	37.7	17	11	7	3	8	80	71.2
Air Force	12/31/2021	52-65	L	19-50	.380	3-9	.333	11-15	.733	11	21	32	37.2	17	9	24	3	8	52	69.5
at Nevada	01/03/2022	54-65	L	20-63	.317	5-25	.200	9-12	.750	13	33	46	37.9	8	6	18	3	7	54	68.2
New Mexico	01/06/2022	83-98	L	29-76	.382	8-26	.308	17-21	.810	15	38	53	39.1	11	21	21	3	10	83	69.3
at Boise St.	01/09/2022	47-71	L	18-61	.295	4-21	.190	7-13	.538	11	22	33	38.6	15	8	16	4	4	47	67.7
at San Diego St.	01/13/2022	45-66	L	19-55	.345	5-22	.227	2-8	.250	10	29	39	38.7	8	12	23	5	6	45	66.2
at UNLV	01/15/2022	68-86	L	27-69	.391	3-22	.136	11-17	.647	14	17	31	38.2	14	17	18	1	8	68	66.3
Colorado St.	01/19/2022	72-88	L	27-68	.397	3-19	.158	15-18	.833	12	26	38	38.2	12	21	10	4	5	72	66.6
Wyoming	01/22/2022	76-66	W	25-59	.424	13-24	.542	13-13	1.000	9	32	41	38.3	14	20	17	8	5	76	67.2
at San Jose St.	01/27/2022	63-61	W	25-68	.368	7-22	.318	6-12	.500	18	27	45	38.7	16	22	11	1	5	63	66.9
at Fresno St.	01/29/2022	57-71	L	21-54	.389	2-13	.154	13-18	.722	7	32	39	38.7	20	11	19	3	6	57	66.5
San Diego St.	02/02/2022	67-68	L	24-53	.453	7-17	.412	12-18	.667	6	26	32	38.4	17	14	13	3	7	67	66.5
UNLV	02/05/2022	60-72	L	23-58	.397	4-16	.250	10-15	.667	8	29	37	38.3	16	14	15	3	5	60	66.2
at Colorado St.	02/09/2022	83-86	L	33-68	.485	9-20	.450	8-16	.500	11	30	41	38.4	12	15	11	5	1	83	66.9
Boise St.	02/12/2022	63-55	W	20-55	.364	6-22	.273	17-21	.810	8	30	38	38.4	15	15	16	5	12	63	66.8
at New Mexico	02/16/2022	73-93	L	27-62	.435	10-25	.400	9-15	.600	12	30	42	38.6	14	14	19	1	3	73	67.0
at Air Force	02/19/2022	56-67	L	21-49	.429	2-9	.222	12-14	.857	8	28	36	38.5	13	9	23	5	4	56	66.6
Nevada	02/26/2022	82-80	Wot2	33-71	.465	5-23	.217	11-16	.688	16	28	44	38.7	20	18	22	5	9	82	67.1
Fresno St.	03/02/2022	96-90	Wot	33-70	.471	9-30	.300	21-28	.750	12	30	42	38.8	14	24	15	4	8	96	68.2
vs Fresno St.	03/06/2022	80-75	W	25-70	.357	8-26	.308	22-22	1.000	18	28	46	39.0	18	20	9	2	4	80	68.6
at UNLV	03/07/2022	69-82	L	26-69	.377	8-30	.267	9-11	.818	18	23	41	39.1	12	15	15	4	5	69	68.6
Total		2058		742-1902	.390	197-664	.297	377-516	.731	373	800	1173	39.1	458	426	501	95	210	2058	68.6
Opponents		2293		869-2023	.430	217-659	.329	338-462	.732	410	850	1260	42.0	489	522	436	105	261	2293	76.4

Utah St. Averages

Games Played	Points/game	FG Pct	3FG Pct	FT Pct	Rebounds/game	Assists/game	Turnovers/game	Assist/Turnover ratio	Steals/game	Blocks/game
30	68.6	39.0	29.7	73.1	39.1	14.2	16.7	0.9	7.0	3.2

UTAH STATE

2022-23 UTAH STATE QUICK STATS

THE LAST TIME UTAH STATE...

WON 5+ CONSECUTIVE GAMES:	5 games in February-March 2019
WON 10+ CONSECUTIVE GAMES:	N/A (8 games in January 1976 and January-February 2013)
BEAT AN OPPONENT BY 15+:	75-58 vs College of Idaho on 11/7/22
BEAT AN OPPONENT BY 20+:	79-57 Nevada on 1/13/18
BEAT AN OPPONENT BY 30+:	82-49 San José State on 1/16/19
BEAT AN OPPONENT BY 40+:	100-58 Loyola Marymount on 11/13/13
BEAT AN OPPONENT BY 50+:	106-35 NNMCM on 11/9/18
SCORED 80+:	96-90 vs Fresno State on 3/2/22
SCORED 90+:	96-90 vs Fresno State on 3/2/22
SCORED 100+:	106-35 NNMCM on 11/9/18
SCORED 80+ IN BACK-TO-BACK GAMES:	82-80 vs Nevada (2/26/22) and 96-90 vs Fresno State (3/2/22)
SCORED 100+ IN BACK-TO-BACK GAMES:	103-46 vs Black Hills State (11/9/13) and 100-58 vs Loyola Marymount (11/13/13)
MADE 30+ FIELD GOALS:	33 vs Fresno State on 3/2/22
MADE 35+ FIELD GOALS:	35 San José State on 2/27/18
MADE 40+ FIELD GOALS:	41 at Sacramento State on 12/19/14
MADE 45+ FIELD GOALS:	45 NNMCM on 11/9/18
MADE 25+ FREE THROWS	26 vs Utah Valley on 12/3/22
ATTEMPTED 30+ FREE THROWS	37 vs Cal State Fullerton on 11/13/21
ATTEMPTED 65+ FIELD GOALS:	71 at Utah Tech on 11/15/22
HAD 50+ REBOUNDS:	53 vs New Mexico on 1/6/22
HAD 10+ STEALS:	11 vs Utah Valley on 12/3/22
HAD 10+ BLOCKS:	14 vs BYU on 12/17/16
HAD 15+ ASSISTS:	15 vs Utah Valley on 12/3/22
HAD 20+ ASSISTS:	24 vs Fresno State on 3/2/22
HAD 20+ TURNOVERS:	20 at USC on 11/26/22
MADE 10+ 3-POINTERS:	10 vs Utah Valley on 12/3/22
MADE 15+ 3-POINTERS:	N/A (14 twice in 2012-13)
DID NOT HIT A 3-POINTER:	at Wyoming on 2/13/19
HAD TWO PLAYERS RECORD A DOUBLE-DOUBLE:	Tamiah Robinson (10/10) and Olivia Wikstrom (16/10) at Arkansas State on 11/19/22
HAD THREE PLAYERS RECORD A DOUBLE-DOUBLE:	Elise Nelson (10/13), Jennifer Schlott (26/10 assists) and Franny Vaalu (13/13) College of Idaho on 12/28/13
HAD TWO PLAYERS SCORE A 20+:	Kaylin Randhawa (22) and Laci Hawthorne (21) vs Dixie State on 12/1/21
HAD AT LEAST FIVE PLAYERS SCORE IN DOUBLE FIGURES:	Adryana Quezada (18), Kaylin Randhawa (12), Laci Hawthorne (12), Manna Mensah (12) and Emmie Harris (11) vs Nevada on 2/26/22

THE LAST TIME A USU OPPONENT...

SCORED 90+:	95 at Utah Tech on 11/15/22
SCORED 100+:	103 at Montana on 12/20/21
BEAT USU BY 20+:	USC 79, Utah State 48 on 11/26/22
BEAT USU BY 30+:	USC 79, Utah State 48 on 11/26/22
BEAT USU BY 40+:	No. 1 Oregon 109, Utah State 52 on 11/13/19
BEAT USU BY 50+:	No. 1 Oregon 109, Utah State 52 on 11/13/19
SHOT OVER .500 FIELD GOALS:	.558 at USC on 11/26/22
SHOT OVER .550 FIELD GOALS:	.558 at USC on 11/26/22
SHOT OVER .600 FIELD GOALS:	.600 at San José State on 12/28/17
SHOT UNDER .300 FIELD GOALS:	.250 vs Air Force on 1/2/21
SHOT UNDER .250 FIELD GOALS:	.226 at San Jose State on 2/24/20
SHOT OVER .500 3-POINT FIELD GOALS:	.500 at Utah Tech on 11/15/22
SHOT UNDER .200 3-POINT FIELD GOALS:	.192 at Air Force on 2/19/22
DID NOT HIT A 3-POINTER:	Air Force on 2/24/18
MADE 15+ 3-POINTERS:	21 vs New Mexico on 1/6/22
MADE 25+ FREE THROWS:	25 at Seattle on 12/3/20
ATTEMPTED 30+ FREE THROWS:	30 at Cal on 11/16/21
HELD USU UNDER .300 FIELD GOALS:	.295 at Boise State on 1/9/22
HELD USU UNDER .250 FIELD GOALS:	.217 vs Wyoming on 3/7/21
HAD 20+ ASSISTS:	24 at USC on 11/26/22
HAD 25+ ASSISTS:	26 vs Colorado State on 1/19/22
HAD 15+ TURNOVERS:	24 vs Utah Valley on 12/3/22
HAD 20+ TURNOVERS:	24 vs Utah Valley on 12/3/22
HAD 10+ BLOCKS:	11 at USC on 11/26/22
HAD 0 BLOCKS:	0 vs BYU on 12/7/20
HAD 10+ STEALS:	11 vs Utah Valley on 12/3/22
HAD 0 STEALS:	0 Colorado State on 3/4/19

THE LAST TIME A UTAH STATE PLAYER...

RECORDED A DOUBLE-DOUBLE:	Tamiah Robinson (10/10) and Olivia Wikstrom (16/10) at Arkansas State (11/19/22)
RECORDED A DOUBLE-DOUBLE WITH ASSISTS:	Jennifer Schlott (20/11) vs. Colorado State (3/11/14)
RECORDED A DOUBLE-DOUBLE WITH STEALS:	Alice Coddington (13/13) Weber State (12/21/09)
RECORDED A TRIPLE-DOUBLE:	N/A
RECORDED A 4X5 GAME:	Olivia Wikstrom (21/5/5 steals) vs CS Fullerton on 11/13/21
LED USU IN POINTS, REBOUNDS AND ASSISTS:	Kaylin Randhawa (16/6/3) at New Mexico (2/16/22)
LED USU IN POINTS, REBOUNDS, ASSISTS AND STEALS:	Kaylin Randhawa (16/6/3/1) at New Mexico (2/16/22)
LED USU IN POINTS, REBOUNDS, ASSISTS AND BLOCKS:	Ashlee Brown (15/9/4/2) at Idaho State (12/10/11)
LED USU IN POINTS, REBOUNDS, BLOCKS AND STEALS:	Meagan Mendazona (18/7/4/4) vs Montana (11/25/20) (one other with seven rebounds)
LED USU IN POINTS, REBOUNDS, ASSISTS, STEALS AND BLOCKS:	Shannon Dufficy (14/15/3/2/3) at Fresno State (1/9/19) (two others with two steals)
LED USU IN REBOUNDS AND ASSISTS:	Tamiah Robinson at Arkansas State (11/19/22)
LED USU IN REBOUNDS, ASSISTS AND STEALS:	Tamiah Robinson at Arkansas State (11/19/22)
LED USU IN REBOUNDS, ASSISTS AND BLOCKS:	Shannon Dufficy (15/3/2) at Fresno State on 1/9/19 (two others with two steals)
LED USU IN REBOUNDS, ASSISTS, STEALS AND BLOCKS:	Shannon Dufficy (15/3/3/2) at Fresno State on 1/9/19 (two others with two steals)
SCORED 20+ POINTS:	Maria Carvalho (21) vs Utah Valley on 12/3/22
SCORED 25+ POINTS:	Adryana Quezada (27) at Air Force on 2/19/22
SCORED 30+ POINTS:	Adryana Quezada (30) vs Colorado State on 1/19/22
SCORED 35+ POINTS:	Funda Nakkasoglu (37) Pacific (11/21/15)
SCORED 40+ POINTS:	Jennifer Schlott (44) at UC Santa Barbara (12/19/13)
NON-STARTER 20+ POINTS:	Adryana Quezada (22) vs Fresno State on 3/2/22
RECORDED 15+ REBOUNDS:	Adryana Quezada (15) at Colorado State on 2/9/22
RECORDED 20+ REBOUNDS:	Sharon Epps (22) Colorado State (2/21/83)
RECORDED 10+ ASSISTS:	Emmie Harris (12) vs. Colorado State on 1/19/22
RECORDED 5+ BLOCKS:	Hailey Bassett (5) UNLV (1/1/20)
RECORDED 5+ STEALS:	Prima Chellis (5) vs College of Idaho on 11/7/22
RECORDED 10+ STEALS:	Alice Coddington (13) Weber State (12/21/09)
MADE 10+ FIELD GOALS:	Adryana Quezada (10) vs Fresno State on 3/2/22
MADE 15+ FIELD GOALS:	Mary Danielson (15) at Alaska-Anchorage (2/26/82)
ATTEMPTED 15+ FIELD GOALS:	Tamiah Robinson (15) at USC on 11/26/22
ATTEMPTED 20+ FIELD GOALS:	Adryana Quezada (23) at Colorado State on 2/9/22
MADE 5+ 3-POINT FIELD GOALS:	Maria Carvalho (5) vs Utah Valley on 12/3/22
ATTEMPTED 10+ 3-POINT FIELD GOALS:	Shlyia Latone (10) vs San Diego State on 2/2/22
ATTEMPTED 10+ FREE THROWS:	Mayson Kimball vs Southeastern Louisiana (11/11/22)
MADE 10+ FREE THROWS:	Kaylin Randhawa (13) vs CS Fullerton on 11/13/21
SHOT 100% FROM THE FIELD (MIN. 5 ATTEMPTS):	Adryana Quezada (8-8) vs. Colorado State on 1/19/22
PLAYED 40+ MINUTES:	Maria Carvalho vs Southeastern Louisiana (11/11/22)
PLAYED 50+ MINUTES:	Elise Nelson (50) BYU (12/22/14)
FOULED OUT:	Mayson Kimball vs Utah Valley on 12/3/22

THE LAST TIME A USU OPPONENT...

SCORED 30+ POINTS:	Kamira Sanders (30) Seattle U on 11/9/19
RECORDED A DOUBLE-DOUBLE:	Shay Fano (18/12) Utah Valley on 12/3/22
MADE 10+ FIELD GOALS:	Breaunna Gillen (12) Utah Tech on 11/15/22
MADE 5+ THREE-POINT FIELD GOALS:	Maggie McCord (5) Utah Tech on 11/15/22
MADE 10+ FREE THROWS:	Da'Ja Hamilton (10) Nevada on 2/26/22
HAD 15+ REBOUNDS:	Annaliese Griffin (15) Arkansas State on 11/19/22
HAD 5+ STEALS:	Breaunna Gillen (5) Utah Tech on 11/15/22
HAD 5+ BLOCKS:	Jaeden Brown (6) Utah Valley on 12/3/22
HAD 10+ ASSISTS:	McKenna Hofschild (13) at Colorado State on 2/9/22

2022-23 TRENDS

Overall Record **3-5, 0-0 MW**

When the Aggies *they are*
 Play day games..... 2-4
 Play night games 1-1

Lead at halftime 2-1
 Trail at halftime 1-4
 Are tied at halftime 0-0

Shoot better from the field than opponent 1-0
 Shoot worse from the field than opponent 2-5
 Shoot the same from the field as opponent 0-0

Shoot better from three than opponent 3-1
 Shoot worse from three than opponent 0-3
 Shoot the same from three as opponent 0-1

Shoot better from the FT line than opponent 3-2
 Shoot worse from the FT line than opponent 0-1
 Shoot the same from the FT line as opponent 0-2

Out-rebound opponent 1-3
 Are out-rebounded by opponent 2-2
 Are even in rebounds with opponent 0-0

Commit fewer fouls than opponent 1-1
 Commit more fouls than opponent 2-4
 Commit same number of fouls 0-0

Have more assists than opponent 1-0
 Have fewer assists than opponent 1-3
 Have same number of assists 1-2

Have fewer turnovers than opponent 2-0
 Have more turnovers than opponent 0-5
 Have same number of turnovers 1-0



Utah State's Points Scored/Allowed Summary

Record When Scoring		Record When Allowing	
0-0	30-39	0-0	
0-1	40-49	0-0	
0-3	50-59	2-0	
1-1	60-69	1-1	
2-0	70-79	0-2	
0-0	80-89	0-1	
0-0	90-99	0-1	
0-0	100+	0-0	

Record When the Scoring Margin is...

1 (pt.)	2	3	4	5	6
0-0	0-0	0-0	0-0	1-0	0-1
7	8	9	10-15	16-20	21+
0-0	0-0	0-0	1-1	1-0	0-3

Record By Month

Nov.	Dec.	Jan.	Feb.	March
1-5	2-0	0-0	0-0	0-0

Utah State's Record By Day Of The Week

Sun.	Mon.	Tues.	Wed.	Thurs.	Fri.	Sat.
0-0	1-0	0-1	0-1	1-0	0-1	1-2

2022-23 Production Summary

	Starters Percentage / Total	Bench Percentage / Total
Minutes	74.1% / 1186	25.9% / 414
Points	79.5% / 397	20.5% / 102
Rebounds	67.6% / 200	32.4% / 96

2022-23 Miscellaneous Statistics

	Double Figure Games Scoring	20-Pt. Figure Games	Double Figure Reb/Ast	Double Doubles
Carvalho	8	6	1	0
Chellis	8	2	0	0
Falslev-Wickizer	3	0	0	0
Fraley	2	0	0	0
Harris	1	0	0	0
Hill-Brown	2	0	0	0
Kimball	8	5	2	0
Klopfenstein	2	0	0	0
Mason	6	0	0	0
Oliva	8	1	0	0
Robinson	8	3	0	1
Tañedo	7	0	0	0
Wahl	8	0	0	1
Wikstrom	8	6	0	1

2022-23 UTAH STATE AGGIES

**0 PRIMA
CHELLIS**

GRADUATE | FORWARD

5-11 | TR

Phoenix, Arizona

Leading Edge Academy

SIU Edwardsville / South Mountain CC

PREVIOUS SCHOOLS: Spent two seasons at SIU Edwardsville, appearing in 55 career games, averaging 5.5 points, 4.6 rebounds and 1.2 steals per game... Scored in double figures seven times in her SIUE career, including a season-best 17 points at Arkansas State (12/22/21)... Began her collegiate career playing two years at South Mountain Community College... Earned National Junior College Athletic Association (NJCAA) Division II Third Team All-American honors as a sophomore in 2019-20... Led the Cougars with 20.9 points and 9.6 rebounds per game as a sophomore and was a first team all-Region 1 selection and Arizona Community College Athletic all-conference honoree.

2022-23 GAME LOGS

Opp.	MP	FG-FGA	FG%	3FG-3FGA	3FG%	FT-FTA	FT%	OR	DR	TR	A	B	S	PF	TO	TP
Fort Lewis (EXH)	DNP	---	---	---	---	---	---	---	---	---	---	---	---	---	---	---
College of Idaho	25	3-8	.375	0-2	.000	4-5	.800	1	4	5	1	0	5	5	3	10
SE Louisiana	21	1-5	.200	0-1	.000	2-4	.500	1	4	5	1	0	0	1	4	4
Utah Tech	13	2-6	.333	0-0	---	1-2	.500	3	2	5	0	0	1	1	2	5
Arkansas State	5	0-2	.000	0-2	.000	1-2	.500	0	0	0	0	0	0	1	0	1
Ball State	12	0-1	.000	0-1	.000	0-0	---	0	1	1	0	0	1	2	0	0
USC	13	1-3	.333	0-0	---	0-0	---	2	0	2	1	0	1	2	0	2
Weber State	18	3-5	.600	2-3	.667	2-2	1.000	0	0	0	1	0	2	3	2	10
Utah Valley	21	0-3	.000	0-0	---	2-6	.333	0	2	2	4	1	2	3	1	2
BYU																
Loyola Marymount																
Eastern Washington																
Air Force																
San Diego State																
Colorado State																
Boise State																
Nevada																
Fresno State																
Air Force																
San Jose State																
Wyoming																
New Mexico																
Colorado State																
Nevada																
Wyoming																
Fresno State																
Boise State																
UNLV																
New Mexico																
San Jose State																

SEASON AND CAREER HIGHS

Season High	Career High	Season High	Career High
10 (2 - at Weber State - 12/1/22)	17 (SIUE vs.. Arkansas State - 12/22/21)	6 (vs. Utah Valley - 12/3/22)	8 (SIUE vs. SE Missouri State - 2/27/21)
	Points		FT Attempted
3 (2 - at Weber State - 12/1/22)	7 (SIUE vs.. Arkansas State - 12/22/21)	5 (3 - at Utah Tech - 11/15/22)	11 (SIUE vs.. Jacksonville State - 2/22/21)
	FG Made		Rebounds
8 (vs. College of Idaho - 11/7/22)	15 (SIUE vs.. Arkansas State - 12/22/21)	4 (vs. Utah Valley - 12/3/22)	4 (5 - vs. Utah Valley - 12/3/22)
	FG Attempted		Assists
2 (at Weber State - 12/1/22)	2 (SIUE vs.. UT Martin - 2/25/21)	5 (vs. College of Idaho - 11/7/22)	4 (2 - SIUE vs.. UT Martin - 2/10/22)
	3PT Made		Steals
3 (at Weber State - 12/1/22)	4 (SIUE vs.. Murray State - 1/24/22)	1 (vs. Utah Valley - 12/3/22)	3 (SIUE vs.. St. Louis Pharmacy - 12/9/20)
	3PT Attempted		Blocks
4 (vs. College of Idaho - 11/7/22)	5 (3 - SIUE vs.. Austin Peay - 2/24/22)	25 (vs. College of Idaho - 11/7/22)	29 (4 - SIUE vs.. Arkansas State - 12/22/21)
	FT Made		Minutes

CAREER STATISTICS

	GP-GS	Min.	Avg.	FG-FGA	Pct.	3FG-FGA	Pct.	FT-FTA	Pct.	Off.	Def.	Total	Avg.	PF	DQ	A	TO	Blk.	Stl.	Pts.	Avg.
2020-21* (Jr.)	24-9	410	17.8	35-100	.350	3-17	.176	26-47	.553	32	58	90	3.9	30	0	26	37	1	21	99	4.3
2021-22* (Sr.)	31-15	647	20.9	65-145	.448	3-15	.200	65-90	.722	63	96	159	5.1	76	0	45	65	4	42	198	6.4
2022-23 (Gr.)	8-0	128	15.9	10-33	.303	2-9	.222	12-21	.571	7	13	20	2.5	15	0	9	12	1	12	34	4.3
Total	63-24	1206	19.2	112-282	.397	8-42	.190	103-160	.644	104	170	274	4.3	124	0	83	114	9	78	335	5.3

*at SIU Edwardsville

2022-23 UTAH STATE AGGIES

1 TAMIAH ROBINSON

JUNIOR | GUARD

5-9 | TR

Philadelphia, Pennsylvania

West Catholic HS

Labette CC

HONORS: NJCAA Division II Second-Team All-America (2022); NJCAA All-Academic Third-Team (2020-21).

PREVIOUS SCHOOL: Spent two seasons at Labette Community College... Earned NJCAA Division II second-team All-America honors in 2022 after leading the Cardinals in points per game (12.6), assists per game (5.1) and steals per game (1.4)... Ranked in the top 10 in several NJCAA Division II statistical categories, including 3-point percentage (39.0 percent, 2nd), assists (62, 3rd), assist-to-turnover ratio (2.6, 4th) and steals (33, 7th)... Appeared in 27 games in 2022, including 24 starts. She scored in double figures 17 times, including a career-best 25 points at Eastern Oklahoma State College... Appeared in 15 games in 2021, making 10 starts... Led Labette in assists per game (4.1) and steals per game (2.2), while averaging 10.3 points and 3.8 rebounds per game. Robinson scored in double figures eight times, including a season-high 21 points against Hesston College... Named to the 2020-21 NJCAA all-academic third team... Appeared in 42 career games, making 34 starts, averaging 11.7 points, 4.8 assists, 3.9 rebounds and 1.7 steals per game.

2022-23 GAME LOGS

Opp.	MP	FG-FGA	FG%	3FG-3FGA	3FG%	FT-FTA	FT%	OR	DR	TR	A	B	S	PF	TO	TP
Fort Lewis (EXH)	28^	7-16	.428	4-6	.667	1-2	.500	1	4	5	4	1	2	1	3	19
College of Idaho	29^	2-10	.200	0-1	.000	2-4	.500	2	6	8	5	0	4	1	1	6
SE Louisiana	35^	3-8	.375	0-0	---	0-0	---	1	3	4	4	0	0	2	4	6
Utah Tech	24^	1-7	.143	0-2	.000	0-0	---	0	2	2	3	2	1	1	4	2
Arkansas State	32^	4-13	.308	2-4	.500	1-2	.500	3	7	10	5	0	2	5	1	10
Ball State	35^	3-5	.600	1-2	.500	0-0	---	2	4	6	2	1	0	0	5	7
USC	36^	7-15	.467	2-4	.500	0-0	---	0	2	2	4	0	1	0	3	16
Weber State	28^	4-11	.364	1-6	.167	3-4	.750	1	6	7	2	0	0	4	2	12
Utah Valley	32^	2-10	.200	0-3	.000	4-4	1.000	0	2	2	4	0	3	3	3	8
BYU																
Loyola Marymount																
Eastern Washington																
Air Force																
San Diego State																
Colorado State																
Boise State																
Nevada																
Fresno State																
Air Force																
San Jose State																
Wyoming																
New Mexico																
Colorado State																
Nevada																
Wyoming																
Fresno State																
Boise State																
UNLV																
New Mexico																
San Jose State																

^denotes starter

SEASON AND CAREER HIGHS

Season High	Career High	Season High	Career High
16 (at USC - 11/26/22)	16 at USC (11/26/22)	4 (3 - vs. Utah Valley - 12/3/22)	4 (3 - vs. Utah Valley - 12/3/22)
7 (at USC - 11/26/22)	7 at USC (11/26/22)	10 (at Arkansas State - 11/19/22)	10 at Arkansas State (11/19/22)
15 (at USC - 11/26/22)	15 at USC (11/26/22)	5 (2 - at Arkansas State - 11/19/22)	5 (2) at Arkansas State (11/19/22)
2 (2 - at USC - 11/26/22)	2 (2) at USC (11/26/22)	4 (vs.. College of Idaho - 11/7/22)	4 vs. College of Idaho (11/7/22)
6 (at Weber State - 12/1/22)	4 (2) at USC (11/26/22)	2 (at Utah Tech - 11/15/22)	2 at Utah Tech (11/15/22)
4 (vs. Utah Valley - 12/3/22)	4 (vs. Utah Valley - 12/3/22)	36 (at USC - 11/26/22)	36 at USC (11/26/22)

CAREER STATISTICS

	GP-GS	Min.	Avg.	FG-FGA	Pct.	3FG-FGA	Pct.	FT-FTA	Pct.	Off.	Def.	Total	Avg.	PF	DQ	A	TO	Blk.	Stl.	Pts.	Avg.
2022-23 (Jr.)	8-8	255	31.9	26-79	.329	6-22	.273	9-12	.750	9	32	41	5.1	16	1	29	23	3	11	67	8.4
Totals	8-8	255	31.9	26-79	.329	6-22	.273	9-12	.750	9	32	41	5.1	16	1	29	23	3	11	67	8.4

2022-23 UTAH STATE AGGIES

2 ISABELLA TAÑEDO

PREVIOUS SCHOOL: Played two seasons for Murray State... Played in all 54 games while making 51 starts for the Racers... Was named to the all-Ohio Valley Conference newcomer team in 2019-20 after finishing second in the conference with 9.3 rebounds per game, while also averaging 10.1 points and totaling 25 blocks... Ranked second on the squad in rebounding as a senior, averaging 5.9 boards per outing... Shot 54.9 percent (68-of-148) from the field... Spent the 2017-18 season at Incarnate Word, where she made 11 appearances.

FRESHMAN | GUARD

5-5 | HS

Laurel, Maryland

St. John's College HS

2022-23 GAME LOGS

Opp.	MP	FG-FGA	FG%	3FG-3FGA	3FG%	FT-FTA	FT%	OR	DR	TR	A	B	S	PF	TO	TP
Fort Lewis (EXH)	5	0-2	.000	0-1	.000	0-0	---	0	1	1	0	0	0	1	0	0
College of Idaho	2	0-0	---	0-0	---	0-0	---	0	0	0	0	0	0	0	0	0
SE Louisiana	DNP	---	---	---	---	---	---	---	---	---	---	---	---	---	---	---
Utah Tech	4	0-2	.000	0-0	---	0-0	---	1	0	1	0	0	0	3	0	0
Arkansas State	4	0-0	---	0-0	---	0-0	---	0	0	0	0	0	0	2	1	0
Ball State	12	0-5	.000	0-1	.000	0-0	---	0	3	3	0	0	0	1	1	0
USC	5	0-0	---	0-0	---	0-0	---	0	0	0	0	0	1	0	1	0
Weber State	7	1-2	.500	0-0	---	0-0	---	0	0	0	0	0	1	1	2	2
Utah Valley	1	0-1	.000	0-0	---	0-0	---	0	0	0	0	0	0	0	0	0
BYU																
Loyola Marymount																
Eastern Washington																
Air Force																
San Diego State																
Colorado State																
Boise State																
Nevada																
Fresno State																
Air Force																
San Jose State																
Wyoming																
New Mexico																
Colorado State																
Nevada																
Wyoming																
Fresno State																
Boise State																
UNLV																
New Mexico																
San Jose State																

SEASON AND CAREER HIGHS

Season High	Career High	Season High	Career High
2 (at Weber State - 12/1/22)	Points	2 (at Weber State - 12/1/22)	Points
1 (at Weber State - 12/1/22)	FG Made	1 (at Weber State - 12/1/22)	FG Made
5 (vs Ball State - 11/23/22)	FG Attempted	5 (vs Ball State - 11/23/22)	FG Attempted
--	3PT Made	--	3PT Made
1 (vs Ball State - 11/23/22)	3PT Attempted	1 (vs Ball State - 11/23/22)	3PT Attempted
--	FT Made	--	FT Made
--	FT Attempted	--	FT Attempted
3 (vs Ball State - 11/23/22)	Rebounds	3 (vs Ball State - 11/23/22)	Rebounds
--	Assists	--	Assists
1 (2 - at Weber State - 12/1/22)	Steals	1 (2 - at Weber State - 12/1/22)	Steals
--	Blocks	--	Blocks
12 (vs Ball State - 11/23/22)	Minutes	12 (vs Ball State - 11/23/22)	Minutes

CAREER STATISTICS

	GP-GS	Min.	Avg.	FG-FGA	Pct.	3FG-FGA	Pct.	FT-FTA	Pct.	Off.	Def.	Total	Avg.	PF	DQ	A	TO	Blk.	Stl.	Pts.	Avg.
2022-23 (Fr.)	7-0	33	4.7	1-10	.100	0-1	.000	0-0	.000	1	3	4	0.6	7	0	0	5	0	2	0	0.3
Totals	7-0	33	4.7	1-10	.100	0-1	.000	0-0	.000	1	3	4	0.6	7	0	0	5	0	2	0	0.3

2022-23 UTAH STATE AGGIES

3 MARIA CARVALHO

HONORS: First-Team All-WAC (2020-21); Second-Team All-Wac (2021-22); WAC All-Defensive Team (2019-20; 2020-21); Academic All-WAC (2021-22).

PREVIOUS SCHOOL: Appeared in 104 games at Utah Valley across four seasons, starting in 77... Averaged 13.6 points, 4.7 rebounds and 3.2 assists during her senior season while leading the team with 36.1 minutes per game... Averaged 12.9 points, 5.1 rebounds and 3.3 assists during her junior year... Named to the WAC All-Defensive team as a junior and sophomore... Named second-team All-WAC as a senior and sophomore and to the first-team as a junior... Also named to the Academic All-WAC team.

GRADUATE | GUARD

5-8 | TR

Lisbon, Portugal

Escola secundaria de vagos

Utah Valley

2022-23 GAME LOGS

Opp.	MP	FG-FGA	FG%	3FG-3FGA	3FG%	FT-FTA	FT%	OR	DR	TR	A	B	S	PF	TO	TP
Fort Lewis (EXH)	31 [^]	5-17	.294	2-9	.222	0-0	---	3	4	7	3	0	0	1	0	12
College of Idaho	33 [^]	7-18	.389	2-3	.667	0-1	.000	2	7	9	4	0	3	1	1	16
SE Louisiana	40 [^]	7-15	.467	1-3	.333	2-3	.667	3	5	8	4	0	1	3	1	17
Utah Tech	32 [^]	5-10	.500	3-6	.500	0-0	---	2	6	8	2	0	1	3	2	13
Arkansas State	10 [^]	3-16	.188	3-7	.429	1-2	.500	2	6	8	4	0	1	2	4	10
Ball State	29 [^]	1-12	.083	0-3	.000	3-4	.750	3	2	5	5	0	0	1	3	5
USC	31 [^]	2-5	.400	0-1	.000	1-2	.500	1	2	3	1	1	1	0	3	5
Weber State	30 [^]	6-12	.500	2-2	1.000	3-4	.750	4	3	7	5	0	1	4	3	17
Utah Valley	35 [^]	6-11	.545	5-6	.833	4-4	1.000	1	5	6	1	0	4	3	3	21
BYU																
Loyola Marymount																
Eastern Washington																
Air Force																
San Diego State																
Colorado State																
Boise State																
Nevada																
Fresno State																
Air Force																
San Jose State																
Wyoming																
New Mexico																
Colorado State																
Nevada																
Wyoming																
Fresno State																
Boise State																
UNLV																
New Mexico																
San Jose State																

[^]denotes starter

SEASON AND CAREER HIGHS

Season High	Career High	Season High	Career High
21 (vs. Utah Valley - 12/3/22)	26 (UVU at Nevada - 11/20/21)	4 (3 - vs. Utah Valley - 12/3/22)	8 (3 - UVU vs. Chicago State - 1/27/22)
7 (2 - vs. Southeastern Louisiana - 11/11/22)	9 (4 - UVU vs. Utah Tech - 2/19/22)	9 (vs. College of Idaho (11/7/22)	10 (2 - UVU vs. Fresno State - 11/11/21)
18 (vs. College of Idaho - 11/7/22)	21 (UVU vs. Utah Tech - 2/19/22)	5 (at Weber State - 12/1/22)	10 (2 - UVU at UTRGV - 1/20/22)
5 (vs. Utah Valley - 12/3/22)	6 (2 - UVU vs. UTRGV - 3/10/22)	4 (vs. Utah Valley - 12/3/22)	7 (UVU at Chicago State - 2/21/19)
7 (at Arkansas State - 11/19/22)	12 (UVU at Seattle - 2/24/22)	1 (at USC - 11/26/22)	1 (3 - at USC - 11/26/22)
4 (vs. Utah Valley - 12/3/22)	8 (2 - UVU vs. Seattle - 1/24/22)	40 (vs. Southeastern Louisiana - 11/11/22)	50 (UVU at Lamar - 1/22/22)

CAREER STATISTICS

	GP-GS	Min.	Avg.	FG-FGA	Pct.	3FG-FGA	Pct.	FT-FTA	Pct.	Off.	Def.	Total	Avg.	PF	DQ	A	TO	Blk.	Stl.	Pts.	Avg.
2018-19 (Fr.)*	27-27	803	29.7	72-192	.375	9-25	.360	46-57	.807	13	62	75	2.8	39	0	117	98	0	45	199	7.4
2019-20 (So.)*	28-28	962	34.4	76-238	.319	30-96	.313	45-53	.849	22	106	128	4.6	61	0	122	79	0	41	227	8.1
2020-21 (Jr.)*	20-20	669	33.5	90-262	.344	30-99	.303	48-66	.727	20	81	101	5.1	38	0	65	67	0	32	258	12.9
2021-22 (Sr.)*	29-29	1046	36.1	148-397	.373	49-147	.333	48-55	.873	25	110	135	4.7	49	1	93	88	2	36	393	13.6
2022.23 (Gr.)	8-8	268	33.5	37-99	.374	16-31	.516	14-20	.700	18	36	54	6.8	17	0	26	20	1	12	104	13.0
Total	112-112	3755	33.5	423-1188	.356	134-398	.337	201-251	.801	98	395	493	4.4	204	1	423	352	3	166	1181	10.5

*at Utah Valley

2022-23 UTAH STATE AGGIES

5 KINLEY FALSLEV-WICKIZER

HONORS: Academic All-Mountain West (2021, 2022); Mountain West Scholar-Athlete (2021).

LAST SEASON: Appeared in 26 games, making one start... Averaged 1.8 points and 0.2 rebounds per game... Scored a season-high nine points against New Mexico (Jan. 6)... Registered 46 points, six rebounds, three assists and two steals in the campaign... Shot 33.3 percent (16-of-48) from the floor and 32.6 percent (14-of-43) from behind the arc... Earned academic all-Mountain West honors... Was a Joe E. and Elma Whitesides Scholar-Athlete Award recipient.

SOPHOMORE | GUARD

5-8 | 2L

Benson, Utah

Green Canyon High School

2022-23 GAME LOGS

Opp.	MP	FG-FGA	FG%	3FG-3FGA	3FG%	FT-FTA	FT%	OR	DR	TR	A	B	S	PF	TO	TP
Fort Lewis (EXH)	14	2-7	.286	1-5	.200	0-0	---	0	0	0	0	0	1	2	0	5
College of Idaho	11	0-1	0	0-1	0	0-0	---	0	0	0	1	0	0	2	0	0
SE Louisiana	1	0-0	---	0-0	---	0-0	---	0	0	0	0	0	0	0	0	0
Utah Tech	11	1-5	.200	1-5	.200	1-1	1.000	0	0	0	0	0	1	0	1	4
Arkansas State	DNP	---	---	---	---	---	---	---	---	---	---	---	---	---	---	---
Ball State	DNP	---	---	---	---	---	---	---	---	---	---	---	---	---	---	---
USC	DNP	---	---	---	---	---	---	---	---	---	---	---	---	---	---	---
Weber State	DNP	---	---	---	---	---	---	---	---	---	---	---	---	---	---	---
Utah Valley	DNP	---	---	---	---	---	---	---	---	---	---	---	---	---	---	---
BYU																
Loyola Marymount																
Eastern Washington																
Air Force																
San Diego State																
Colorado State																
Boise State																
Nevada																
Fresno State																
Air Force																
San Jose State																
Wyoming																
New Mexico																
Colorado State																
Nevada																
Wyoming																
Fresno State																
Boise State																
UNLV																
New Mexico																
San Jose State																

SEASON AND CAREER HIGHS

Season High	Career High	Season High	Career High
4 (at Utah Tech - 11/15/22)	14 (2 - vs Boise State - 2/18/21)	1 (at Utah Tech - 11/15/22)	2 (2 - vs Wyoming - 3/7/21)
	Points		FT Attempted
1 (at Utah Tech - 11/15/22)	5 (2 - vs Boise State - 2/18/21)	--	2 (3 - at Fresno State - 1/29/22)
	FG Made		Rebounds
5 (at Utah Tech - 11/15/22)	11 (vs Boise State - 2/18/21)	1 (vs College of Idaho - 11/7/22)	2 (at UNLV - 1/15/22)
	FG Attempted		Assists
1 (at Utah Tech - 11/15/22)	4 (vs Fresno State - 2/6/21)	1 (at Utah Tech - 11/15/22)	1 (2 - at Utah Tech - 11/15/22)
	3PT Made		Steals
5 (at Utah Tech - 11/15/22)	8 (vs New Mexico - 2/28/21)	--	1 (2 - at Utah Tech - 11/15/22)
	3PT Attempted		Blocks
1 (at Utah Tech - 11/15/22)	2 (vs Wyoming - 3/7/21)		N/A
	FT Made		Minutes
		11 (2 - at Utah Tech - 11/15/22)	33 (vs Boise State - 2/18/21)

CAREER STATISTICS

	GP-GS	Min.	Avg.	FG-FGA	Pct.	3FG-FGA	Pct.	FT-FTA	Pct.	Off.	Def.	Total	Avg.	PF	DQ	A	TO	Blk.	Stl.	Pts.	Avg.
2020-21 (Fr.)	22-1	221	10.0	25-84	.298	20-71	.282	4-5	.800	2	9	11	0.5	13	0	4	9	0	1	74	3.4
2021-22 (So.)	26-1	166	6.4	16-48	.333	14-43	.326	0-0	.000	0	6	6	0.2	17	2	3	7	0	2	46	1.8
2022-23 (Jr.)	3-0	24	7.9	1-7	.143	1-7	.143	1-1	1.000	0	0	0	0.0	2	0	1	1	0	1	4	1.3
Total	51-2	420	8.2	42-139	.302	35-121	.289	5-6	.833	2	15	17	0.3	31	1	8	17	0	4	124	2.4

2022-23 UTAH STATE AGGIES

10 CRISTINA OLIVA

SOPHOMORE | GUARD

5-9 | TR

Davis, California

Davis HS

Sierra College

HONORS: First-Team All-Big 8 (2021-22); First-Team All-State (2021-22).

PREVIOUS SCHOOL: Played her freshman campaign at Sierra College, where she was named first team all-Big 8 Conference. She started in all 29 games she appeared... Helped the Wolverines to a 28-3 mark in the 2021-22 season... Led the team with 15.4 points per game, while logging 4.5 rebounds, 1.5 steals and 1.4 assists per game... Scored in double figures 19 times during the year, including a season-high 26 points twice... Grabbed five or more rebounds in 12 games, including a season-best 13 boards at Modesto... Recorded a season-high five assists and five steals against Diablo Valley... Named First-Team All-State while leading the Wolverines to a 28-3 record and a State Championship.

2022-23 GAME LOGS

Opp.	MP	FG-FGA	FG%	3FG-3FGA	3FG%	FT-FTA	FT%	OR	DR	TR	A	B	S	PF	TO	TP
Fort Lewis (EXH)	19	4-10	.400	0-4	.000	3-5	.600	0	3	3	0	0	1	4	1	11
College of Idaho	28 [^]	5-8	.625	5-7	.714	2-2	1.000	1	4	5	0	0	1	1	3	17
SE Louisiana	23 [^]	1-5	.200	1-4	.250	0-0	---	0	1	1	1	0	1	1	2	3
Utah Tech	27 [^]	2-11	.182	0-7	.000	2-2	1.000	0	4	4	3	0	0	2	0	6
Arkansas State	18 [^]	3-7	.429	2-4	.500	0-0	---	2	0	2	0	1	1	1	5	8
Ball State	13	0-2	.000	0-2	.000	2-2	1.000	1	0	1	0	0	0	0	3	2
USC	17	1-6	.167	1-3	.333	0-0	---	0	1	1	0	1	0	2	3	3
Weber State	11	0-3	.000	0-1	.000	0-0	---	1	1	2	0	1	0	1	1	0
Utah Valley	7	0-2	.000	0-2	.000	0-0	---	0	0	0	0	0	0	0	0	0
BYU																
Loyola Marymount																
Eastern Washington																
Air Force																
San Diego State																
Colorado State																
Boise State																
Nevada																
Fresno State																
Air Force																
San Jose State																
Wyoming																
New Mexico																
Colorado State																
Nevada																
Wyoming																
Fresno State																
Boise State																
UNLV																
New Mexico																
San Jose State																

[^]denotes starter

SEASON AND CAREER HIGHS

Season High	Career High	Season High	Career High
17 (vs College of Idaho - 11/7/22)	17 (vs College of Idaho - 11/7/22)	2 (3 - vs Ball State - 11/23/22)	2 (3 - vs Ball State - 11/23/22)
5 (vs College of Idaho - 11/7/22)	5 (vs College of Idaho - 11/7/22)	5 (vs College of Idaho - 11/7/22)	5 (vs College of Idaho - 11/7/22)
11 (at Utah Tech - 11/15/22)	11 (at Utah Tech - 11/15/22)	3 (at Utah Tech - 11/15/22)	3 (at Utah Tech - 11/15/22)
5 (vs College of Idaho - 11/7/22)	5 (vs College of Idaho - 11/7/22)	1 (3 - at Arkansas State - 11/19/22)	1 (3 - at Arkansas State - 11/19/22)
7 (2 - at Utah Tech - 11/15/22)	7 (2 - at Utah Tech - 11/15/22)	1 (2 - at USC - 11/26/22)	1 (2 - at USC - 11/26/22)
2 (3 - vs Ball State - 11/23/22)	2 (3 - vs Ball State - 11/23/22)	28 (vs College of Idaho - 11/7/22)	28 (vs College of Idaho - 11/7/22)

CAREER STATISTICS

	GP-GS	Min.	Avg.	FG-FGA	Pct.	3FG-FGA	Pct.	FT-FTA	Pct.	Off.	Def.	Total	Avg.	PF	DR	A	TO	Blk.	Stl.	Pts.	Avg.
2022-23 (So.)	8-4	144	17.9	12-44	.273	9-30	.300	6-6	1.000	5	11	16	2.0	8	0	4	17	3	3	39	4.9
Total	8-4	144	17.9	12-44	.273	9-30	.300	6-6	1.000	5	11	16	2.0	8	0	4	17	3	3	39	4.9

2022-23 UTAH STATE AGGIES

12 OLIVIA MASON

HONORS: MAAC all-Academic Team (2019-20; 2021-22).

PREVIOUS SCHOOL: Appeared in 48 career games with 43 starts across five seasons at Niagara University in Lewiston, New York... Started in 29 games at Niagara University in the 2021-22 campaign, finishing second on the team with 5.8 rebounds per game... Averaged 6.9 points per game, while finishing the season with 51 steals, 26 assists and five blocks... Scored in double figures six times, including a season-high 14 points twice... Collected double-digit rebounds in four games, including two double-double outings... Two-time member of the MAAC all-Academic Team.

SENIOR I FORWARD

6-0 | TR

Kennett Square, Pennsylvania
Ursuline Academy
Niagara University

2022-23 GAME LOGS

Opp.	MP	FG-FGA	FG%	3FG-3FGA	3FG%	FT-FTA	FT%	OR	DR	TR	A	B	S	PF	TO	TP
Fort Lewis (EXH)	18	4-7	.571	0-0	---	1-1	1.000	4	2	6	0	0	0	4	2	9
College of Idaho	3	0-0	---	0-0	---	1-2	.500	0	0	0	0	0	0	2	0	1
SE Louisiana	DNP	---	---	---	---	---	---	---	---	---	---	---	---	---	---	---
Utah Tech	4	0-1	.000	0-0	---	0-0	---	1	0	1	0	0	0	1	0	0
Arkansas State	11	0-2	.000	0-0	---	0-0	---	1	0	1	0	0	0	1	1	0
Ball State	7	0-1	.000	0-0	---	1-2	.500	1	1	2	0	0	1	2	0	1
USC	14	2-4	.500	0-0	---	0-0	---	2	4	6	0	0	1	3	2	4
Weber State	DNP	---	---	---	---	---	---	---	---	---	---	---	---	---	---	---
Utah Valley	3	0-0	---	0-0	---	0-0	---	0	0	0	0	0	0	3	0	0
BYU																
Loyola Marymount																
Eastern Washington																
Air Force																
San Diego State																
Colorado State																
Boise State																
Nevada																
Fresno State																
Air Force																
San Jose State																
Wyoming																
New Mexico																
Colorado State																
Nevada																
Wyoming																
Fresno State																
Boise State																
UNLV																
New Mexico																
San Jose State																

^denotes starter

SEASON AND CAREER HIGHS

Season High	Career High	Season High	Career High
4 (at USC - 11/26/22)	16 (NU vs Quinnipiac - 2/26/21)	2 (2 - vs Ball State - 11/23/22)	8 (NU vs Iona - 3/3/22)
2 (at USC - 11/26/22)	7 (NU vs Quinnipiac - 2/26/21)	6 (at USC - 11/26/22)	13 (NU at Canisius - 1/9/22)
4 (at USC - 11/26/22)	12 (NU at Quinnipiac - 2/19/22)	--	5 (NU vs Quinnipiac - 2/27/21)
--	1 (NU vs Iona - 2/17/22)	1 (2 - at USC - 11/26/22)	7 (NU vs Iona - 1/1/21)
--	1 (3 - NU vs Iona - 2/17/22)	--	2 (NU at St. Bonaventure - 11/7/19)
1 (2 - vs Ball State - 11/23/22)	4 (4 - NU vs Quinnipiac - 1/29/22)	14 (at USC - 11/26/22)	38 (NU vs Iona - 1/1/21)

CAREER STATISTICS

	GP-GS	Min.	Avg.	FG-FGA	Pct.	3FG-FGA	Pct.	FT-FTA	Pct.	Off.	Def.	Total	Avg.	PF	DQ	A	TO	Blk.	Stl.	Pts.	Avg.
2019-20 (Fr.)*	8-3	128	16.0	11-25	.440	0-0	.000	1-2	.500	13	9	22	2.8	23	2	4	9	2	11	23	2.9
2020-21 (So.)*	11-11	305	27.7	39-81	.481	0-2	.000	16-20	.800	29	33	62	5.6	38	2	13	19	0	31	94	8.5
2021-22 (Jr.)*	29-29	659	22.7	82-179	.458	1-1	1.000	34-70	.486	76	91	167	5.8	84	3	26	40	5	51	199	6.9
2022-23 (Sr.)	6-0	44	7.3	2-8	.250	0-0	.000	2-4	.500	5	5	10	1.7	12	0	0	3	0	2	6	1.0
Totals	54-43	1135	21.0	134-294	.456	1-3	.333	53-96	.552	122	138	260	4.8	157	7	43	71	7	95	322	6.0

*at Niagara

2022-23 UTAH STATE AGGIES

15 OLIVIA WIKSTROM

SOPHOMORE | GUARD

6-1 | 1L

Bainbridge Island, Washington
Bainbridge HS
Northern Colorado

HONORS: Academic All-Mountain West (2022); Mountain West Scholar-Athlete (2022).

LAST SEASON: Appeared in 25 games, making four starts... Averaged 4.5 points and 2.9 rebounds per game... Scored in double figures three times, including a career-high 21 points against Cal State Fullerton (Nov. 13)... Collected double-digit rebounds seven times, including a career-high 10 rebounds against Dixie State (Dec. 1)... Posted a career-high five assists and five steals against Cal State Fullerton (Nov. 13)... Shot 29.7 percent (33-of-111) from the floor, 32.7 percent (18-of-55) from behind the arc and 68.3 percent (28-of-41) at the free throw line... Earned academic all-Mountain West honors and was a MW Scholar-Athlete... Was a Joe E. and Elma Whitesides Scholar-Athlete Award recipient.

2022-23 GAME LOGS

Opp.	MP	FG-FGA	FG%	3FG-3FGA	3FG%	FT-FTA	FT%	OR	DR	TR	A	B	S	PF	TO	TP
Fort Lewis (EXH)	25 [^]	2-10	.200	0-2	.000	2-2	1.000	1	3	4	3	0	2	0	1	6
College of Idaho	17	2-6	.333	0-2	.000	2-2	1.000	1	2	3	1	0	1	0	1	6
SE Louisiana	21	3-6	.500	1-1	1.000	3-3	1.000	1	1	2	2	0	3	0	1	10
Utah Tech	22	2-10	.200	0-5	.000	1-2	.500	2	2	4	1	0	0	1	4	5
Arkansas State	28	5-9	.556	3-3	1.000	3-4	.750	2	8	10	1	1	0	1	3	16
Ball State	31 [^]	4-11	.364	1-3	.333	3-4	.750	3	4	7	0	3	1	3	6	12
USC	31 [^]	4-14	.286	2-7	.286	2-2	1.000	0	1	1	1	0	3	0	2	12
Weber State	37 [^]	7-12	.583	4-6	.667	1-1	1.000	0	5	5	2	0	0	0	1	19
Utah Valley	30 [^]	3-13	.231	2-6	.333	2-2	1.000	2	5	7	3	0	0	0	2	10
BYU																
Loyola Marymount																
Eastern Washington																
Air Force																
San Diego State																
Colorado State																
Boise State																
Nevada																
Fresno State																
Air Force																
San Jose State																
Wyoming																
New Mexico																
Colorado State																
Nevada																
Wyoming																
Fresno State																
Boise State																
UNLV																
New Mexico																
San Jose State																

[^]denotes starter

SEASON AND CAREER HIGHS

Season High	Career High	Season High	Career High
19 (at Weber State - 12/1/22)	21 (vs CS Fullerton - 11/13/21)	4 (2 - vs Ball State - 11/23/22)	12 (vs CS Fullerton - 11/13/21)
7 (at Weber State - 12/1/22)	7 (at Weber State - 12/1/22)	10 (at Arkansas State - 11/19/22)	10 (2 - at Arkansas State - 11/19/22)
14 (at USC - 11/26/22)	11 (vs CS Fullerton - 11/13/21)	3 (vs. Utah Valley - 12/3/22)	5 (vs CS Fullerton - 11/13/21)
4 (at Weber State - 12/1/22)	4 (2 - at Weber State - 12/1/22)	3 (2 - at USC - 11/26/22)	5 (vs CS Fullerton - 11/13/21)
7 (at USC - 11/26/22)	8 (vs CS Fullerton - 11/13/21)	3 (vs Ball State - 11/23/22)	3 (vs Ball State - 11/23/22)
3 (3 - vs Ball State - 11/23/22)	9 (vs CS Fullerton - 11/13/21)	37 (at Weber State - 12/1/22)	37 (at Weber State - 12/1/22)

CAREER STATISTICS

	GP-GS	Min.	Avg.	FG-FGA	Pct.	3FG-FGA	Pct.	FT-FTA	Pct.	Off.	Def.	Total	Avg.	PF	DQ	A	TO	Blk.	Stl.	Pts.	Avg.
2020-21 (Fr.)*	26-2	243	9.3	36-91	.396	10-38	.263	19-26	.731	9	41	50	1.9	15	0	6	22	3	11	101	3.9
2021-22 (So.)	25-4	371	14.8	33-111	.297	18-55	.327	28-41	.683	20	53	73	2.9	24	0	24	33	2	22	112	4.5
2022-23 (Jr.)	8-4	216	26.9	30-81	.370	13-33	.394	17-20	.850	11	28	39	4.9	5	0	11	20	4	8	90	11.3
Total	59-10	827	14.0	99-283	.350	41-126	.325	64-87	.736	40	122	162	2.7	44	0	41	75	9	41	303	5.1

*at Northern Colorado

2022-23 UTAH STATE AGGIES

20 LILLIAN HARRIS

PREVIOUS SCHOOL: Appeared in 32 games during her freshman year at CCBC Essex in Baltimore, Maryland, averaging 5.6 points and 4.2 rebounds per game... Helped lead the Knights to a 36-1 record in 2021-22 and helped set a NJCAA-record 53-straight victories... Also led her team to a Region 20 championship and a third-place national finish for DII junior colleges... Redshirted her first year.

SOPHOMORE | FORWARD

6-2 | TR

Westminster, Maryland

Westminster HS

CCBC Essex

2022-23 GAME LOGS

Opp.	MP	FG-FGA	FG%	3FG-3FGA	3FG%	FT-FTA	FT%	OR	DR	TR	A	B	S	PF	TO	TP
Fort Lewis (EXH)	19	1-6		0-3		0-0		1	3	4	0	0	0	0	0	2
College of Idaho	DNP	---	---	---	---	---	---	---	---	---	---	---	---	---	---	---
SE Louisiana	DNP	---	---	---	---	---	---	---	---	---	---	---	---	---	---	---
Utah Tech	1	0-0		0-0		0-0		0	0	0	0	0	0	0	0	0
Arkansas State	DNP	---	---	---	---	---	---	---	---	---	---	---	---	---	---	---
Ball State	DNP	---	---	---	---	---	---	---	---	---	---	---	---	---	---	---
USC	DNP	---	---	---	---	---	---	---	---	---	---	---	---	---	---	---
Weber State	DNP	---	---	---	---	---	---	---	---	---	---	---	---	---	---	---
Utah Valley	DNP	---	---	---	---	---	---	---	---	---	---	---	---	---	---	---
BYU																
Loyola Marymount																
Eastern Washington																
Air Force																
San Diego State																
Colorado State																
Boise State																
Nevada																
Fresno State																
Air Force																
San Jose State																
Wyoming																
New Mexico																
Colorado State																
Nevada																
Wyoming																
Fresno State																
Boise State																
UNLV																
New Mexico																
San Jose State																

SEASON AND CAREER HIGHS

Season High	Career High	Season High	Career High
Points	--	FT Attempted	--
FG Made	--	Rebounds	--
FG Attempted	--	Assists	--
3PT Made	--	Steals	--
3PT Attempted	--	Blocks	--
FT Made	--	Minutes	1 at Utah Tech (11/15/22)

CAREER STATISTICS

	GP-GS	Min.	Avg.	FG-FGA	Pct.	3FG-FGA	Pct.	FT-FTA	Pct.	Off.	Def.	Total	Avg.	PF	DQ	A	TO	Blk.	Stl.	Pts.	Avg.
2022-23 (So.)*	1-0	1	1.5	0-0	.000	0-0	.000	0-0	.000	0	0	0	0.0	0	0	0	0	0	0	0	0.0
Total	1-0	1	1.5	0-0	.000	0-0	.000	0-0	.000	0	0	0	0.0	0	0	0	0	0	0	0	0.0

2022-23 UTAH STATE AGGIES

21 MAYSON KIMBALL

HONORS: All-Northeast Conference Second-Team (2020-21); Northeast-10 Conference All-Rookie Team (2017-18).

PREVIOUS SCHOOL: Spent five seasons at Merrimack College in North Andover, Massachusetts, appearing in 98 games and starting in 92... Averaged 12.0 points, 3.9 rebounds and 1.8 assists as a senior... Named to the All-Northeast Conference Second-Team as a junior after averaging 13.4 points, 5.9 rebounds and 1.7 assists per game... Named to the Northeast-10 Conference all-rookie team after averaging 10.6 points, 4.8 rebounds and 2.3 assists during her freshman year.

GRADUATE | GUARD

5-11 | TR

Webster, New Hampshire

Tilton School

Merrimack College

2022-23 GAME LOGS

Opp.	MP	FG-FGA	FG%	3FG-3FGA	3FG%	FT-FTA	FT%	OR	DR	TR	A	B	S	PF	TO	TP
Fort Lewis (EXH)	---	---	---	---	---	---	---	---	---	---	---	---	---	---	---	---
College of Idaho	21 [^]	3-10	.300	1-5	.200	3-5	.800	1	3	4	1	0	1	4	3	10
SE Louisiana	34 [^]	6-7	.857	5-5	1.000	7-10	.700	0	6	6	4	1	1	4	0	24
Utah Tech	33 [^]	5-11	.455	3-7	.429	1-2	.500	2	3	5	2	0	0	0	4	14
Arkansas State	30 [^]	1-5	.200	0-2	.000	2-2	1.000	0	2	2	2	1	2	4	2	4
Ball State	30 [^]	8-14	.571	2-4	.500	3-3	1.000	3	5	8	0	0	1	4	4	21
USC	28 [^]	3-9	.333	0-1	.000	0-0	---	1	1	2	1	0	0	4	4	6
Weber State	24 [^]	2-8	.250	1-5	.200	0-0	---	0	2	2	0	0	3	5	2	5
Utah Valley	19 [^]	3-5	.600	1-3	.333	5-5	1.000	1	2	3	0	0	1	5	2	12
BYU																
Loyola Marymount																
Eastern Washington																
Air Force																
San Diego State																
Colorado State																
Boise State																
Nevada																
Fresno State																
Air Force																
San Jose State																
Wyoming																
New Mexico																
Colorado State																
Nevada																
Wyoming																
Fresno State																
Boise State																
UNLV																
New Mexico																
San Jose State																

[^]denotes starter

SEASON AND CAREER HIGHS

Season High	Career High	Season High	Career High
24 (vs. Southeastern Louisiana - 11/11/22)	28 (MC vs. Bentley - 12/12/17)	10 (vs. Southeastern Louisiana - 11/11/22)	10 (2 - vs. Southeastern Louisiana (11/11/22))
8 (vs. Ball State - 11/23/22)	10 (MC vs. Bentley - 12/12/17)	8 (vs. Ball State - 11/23/22)	12 (MC vs. Saint Rose - 1/27/18)
14 (vs. Ball State - 11/23/22)	24 (MC vs. Mt. St. Mary's - 2/25/21)	4 (vs. Southeastern Louisiana - 11/11/22)	6 (MC vs. American International - 1/29/19)
5 (vs. Southeastern Louisiana - 11/11/22)	6 (MC at Harvard - 11/30/21)	3 (at Weber State - 12/1/22)	4 (3 - MC at Lehigh - 11/21/21)
7 (at Utah Tech - 11/15/22)	11 (MC vs. CCSU - 1/8/22)	1 (2 - at Arkansas State - 11/19/22)	3 (2 - MC vs. St. Francis Brooklyn - 2/26/22)
7 (vs. Southeastern Louisiana - 11/11/22)	8 (MC vs. Mt. St. Mary's - 2/25/21)	34 (vs. Southeastern Louisiana - 11/11/22)	46 (MC vs. Fairleigh Dickinson - 1/6/22)

CAREER STATISTICS

	GP-GS	Min.	Avg.	FG-FGA	Pct.	3FG-FGA	Pct.	FT-FTA	Pct.	Off.	Def.	Total	Avg.	PF	DQ	A	TO	Blk.	Stl.	Pts.	Avg.
2017-18 (Fr.)*	27-26	813	30.1	96-220	.436	33-90	.367	62-90	.689	24	105	129	4.8	59	1	63	77	9	15	287	10.6
2018-19 (So.)*	30-25	877	29.2	127-328	.387	46-152	.303	62-86	.721	29	156	185	6.2	53	1	62	73	12	38	362	12.1
2020-21 (Jr.)*	15-15	478	31.9	76-214	.355	20-67	.299	29-46	.630	31	57	88	5.9	41	0	25	46	1	22	201	13.4
2021-22 (Sr.)*	26-26	808	31.1	115-342	.336	40-138	.290	42-65	.646	26	76	102	3.9	54	1	46	86	12	25	312	12.0
2022-23 (Gr.)	8-8	218	27.3	31-69	.449	13-32	.406	21-27	.778	8	24	32	4.0	30	2	7	21	2	9	96	12.0
Total	106-100	3205	30.2	445-1173	.379	152-479	.317	216-314	.688	118	418	536	5.1	237	4	203	303	36	109	1258	11.9

*at Merrimack

2022-23 UTAH STATE AGGIES

23 TIAIRRA HILL-BROWN

FRESHMAN | FORWARD

6-2 | HS

Las Vegas, Nevada

Ed W. Clark HS

HIGH SCHOOL: Averaged 17 points, 12 rebounds and 4 assists per game her senior year at Ed W. Clark HS in Las Vegas, Nevada... Led her team to a 4A Nevada State title as a senior... Named to the All-Southern Nevada first-team and named All-Mountain Conference MVP... Began her high school career in Stockton, California, where she helped St. Mary's High School to Sac-Joaquin Section Division 1 Championships in both 2018-19 and 2019-20... Averaged 15.0 points and 8.0 rebounds per game during her junior year... Led her teams to SJ Section Championships in 2018 and 2019... Earned a 2020-21 Chemistry in the Community Academic Award... Set to finish her high school career this year at Ed W. Clark High School in Las Vegas, Nevada.

2022-23 GAME LOGS

Opp.	MP	FG-FGA	FG%	3FG-3FGA	3FG%	FT-FTA	FT%	OR	DR	TR	A	B	S	PF	TO	TP
Fort Lewis (EXH)	13	0-0	---	0-0	---	0-0	---	0	4	4	1	0	0	2	1	0
College of Idaho	DNP	---	---	---	---	---	---	---	---	---	---	---	---	---	---	---
SE Louisiana	DNP	---	---	---	---	---	---	---	---	---	---	---	---	---	---	---
Utah Tech	1	0-1	.000	0-0	---	0-0	---	0	0	0	0	0	0	0	0	0
Arkansas State	DNP	---	---	---	---	---	---	---	---	---	---	---	---	---	---	---
Ball State	DNP	---	---	---	---	---	---	---	---	---	---	---	---	---	---	---
USC	DNP	---	---	---	---	---	---	---	---	---	---	---	---	---	---	---
Weber State	DNP	---	---	---	---	---	---	---	---	---	---	---	---	---	---	---
Utah Valley	DNP	---	---	---	---	---	---	---	---	---	---	---	---	---	---	---
BYU																
Loyola Marymount																
Eastern Washington																
Air Force																
San Diego State																
Colorado State																
Boise State																
Nevada																
Fresno State																
Air Force																
San Jose State																
Wyoming																
New Mexico																
Colorado State																
Nevada																
Wyoming																
Fresno State																
Boise State																
UNLV																
New Mexico																
San Jose State																

SEASON AND CAREER HIGHS

Season High	Career High	Season High	Career High
--	--	FT Attempted	--
Points	--	Rebounds	--
FG Made	--	Assists	--
FG Attempted	--	Steals	--
1 at Utah Tech (11/15/22)	--	Blocks	--
3PT Made	--	Minutes	--
3PT Attempted	--	1 at Utah Tech (11/15/22)	--
FT Made	--		

CAREER STATISTICS

	GP-GS	Min.	Avg.	FG-FGA	Pct.	3FG-FGA	Pct.	FT-FTA	Pct.	Off.	Def.	Total	Avg.	PF	DQ	A	TO	Blk.	Stl.	Pts.	Avg.
2022-23 (Fr.)	2-0	2	0.9	0-1	.000	0-0	.000	0-0	.000	0	0	0	0.0	0	0	0	0	0	0	0	0.0
Totals	2-0	2	0.9	0-1	.000	0-0	.000	0-0	.000	0	0	0	0.0	0	0	0	0	0	0	0	0.0

2022-23 UTAH STATE AGGIES

24 NATALIE FRALEY

FRESHMAN | GUARD

6-0 | HS

Kelso, Washington

Kelso HS

HIGH SCHOOL: Averaged 22.9 points, 10.4 rebounds, 6.0 steals and 4.6 assists per game as a senior at Kelso (Washington) High School... Named the Greater St. Helens 3A MVP and was an all-league honoree as a senior... Named the Cowlitz and Lewis County MVP and selected all-area as a senior... Selected to the all-Southwest Washington first team as a senior... Was first-team all-state (3A) and second-team all-state (overall) as a senior... Holds the Kelso HS single-game scoring record (41)... Set the single-season assist record in addition to being the all-time career assists and steals leader at Kelso HS... Ranks second in the Kelso HS record book for both career points and career rebounds... Averaged 21.0 points, 7.0 rebounds, 4.6 assists and 4.3 steals per game as a junior en route to earning all-Region Player of the Year honors... Also played volleyball, placing third and seventh in the state tournament and being named first-team all-league and second-team all-area... Nine-time Scholar Athlete in the Greater St. Helens League.

2022-23 GAME LOGS

Opp.	MP	FG-FGA	FG%	3FG-3FGA	3FG%	FT-FTA	FT%	OR	DR	TR	A	B	S	PF	TO	TP
Fort Lewis (EXH)	DNP	---	---	---	---	---	---	---	---	---	---	---	---	---	---	---
College of Idaho	DNP	---	---	---	---	---	---	---	---	---	---	---	---	---	---	---
SE Louisiana	DNP	---	---	---	---	---	---	---	---	---	---	---	---	---	---	---
Utah Tech	DNP	---	---	---	---	---	---	---	---	---	---	---	---	---	---	---
Arkansas State	DNP	---	---	---	---	---	---	---	---	---	---	---	---	---	---	---
Ball State	DNP	---	---	---	---	---	---	---	---	---	---	---	---	---	---	---
USC	DNP	---	---	---	---	---	---	---	---	---	---	---	---	---	---	---
Weber State	7	1-2	.500	0-0	---	1-2	.500	0	1	1	0	0	0	1	0	3
Utah Valley	15	2-6	.333	2-3	.667	2-3	.667	1	3	4	1	0	1	1	1	8
BYU																
Loyola Marymount																
Eastern Washington																
Air Force																
San Diego State																
Colorado State																
Boise State																
Nevada																
Fresno State																
Air Force																
San Jose State																
Wyoming																
New Mexico																
Colorado State																
Nevada																
Wyoming																
Fresno State																
Boise State																
UNLV																
New Mexico																
San Jose State																

SEASON AND CAREER HIGHS

Season High	Career High	Season High	Career High
8 (vs. Utah Valley - 12/3/22)	8 (vs. Utah Valley - 12/3/22)	3 (vs. Utah Valley - 12/3/22)	3 (vs. Utah Valley - 12/3/22)
2 (vs. Utah Valley - 12/3/22)	2 (vs. Utah Valley - 12/3/22)	4 (vs. Utah Valley - 12/3/22)	4 (vs. Utah Valley - 12/3/22)
6 (vs. Utah Valley - 12/3/22)	6 (vs. Utah Valley - 12/3/22)	1 (vs. Utah Valley - 12/3/22)	1 (vs. Utah Valley - 12/3/22)
2 (vs. Utah Valley - 12/3/22)	2 (vs. Utah Valley - 12/3/22)	1 (vs. Utah Valley - 12/3/22)	1 (vs. Utah Valley - 12/3/22)
3 (vs. Utah Valley - 12/3/22)	3 (vs. Utah Valley - 12/3/22)	-	-
2 (vs. Utah Valley - 12/3/22)	2 (vs. Utah Valley - 12/3/22)	15 (vs. Utah Valley - 12/3/22)	15 (vs. Utah Valley - 12/3/22)

CAREER STATISTICS

	GP-GS	Min.	Avg.	FG-FGA	Pct.	3FG-FGA	Pct.	FT-FTA	Pct.	Off.	Def.	Total	Avg.	PF	DQ	A	TO	Blk.	Stl.	Pts.	Avg.
2022-23 (Fr.)	2-0	21	10.6	3-8	.375	2-3	.667	3-5	.600	1	4	5	2.5	2	0	1	1	0	1	11	5.5
Totals	2-0	21	10.6	3-8	.375	2-3	.667	3-5	.600	1	4	5	2.5	2	0	1	1	0	1	11	5.5

2022-23 UTAH STATE AGGIES

41 ABBY WAHL

GRADUATE | FORWARD

6-1 | TR

Santa Claus, Indiana

Heritage Hills HS

Eastern Illinois

HONORS: First Team All-Ohio Valley Conference (2020-21); EIU Athletics Female Newcomer of the Year (2018-19); CoSIDA Academic All-District Team (2020-21).

PREVIOUS SCHOOL: Appeared in 113 games across four seasons at Eastern Illinois, starting in 98... Played and started in all 30 games in her senior campaign, where she led the team in rebounds per game (5.8) and was second on the squad in points per game (11.3)... Named First Team All-Ohio Valley Conference as a junior in 2020-21 after averaging 14.5 points and 7.4 rebounds per game, ranking fifth in the OVC in both categories... Was named OVC Player of the Week twice on the year... Averaged 11.3 points and 5.8 rebounds per game as a senior... Named the EIU Athletics Female Newcomer of the Year in 2018-19 after making 13 starts and appearing in 27 games as a freshman, averaging 6.3 points and 3.6 rebounds per game... Three-time recipient of the OVC Medal of Honor... Named to the CoSIDA Academic All-District Team in 2020-21.

2022-23 GAME LOGS

Opp.	MP	FG-FGA	FG%	3FG-3FGA	3FG%	FT-FTA	FT%	OR	DR	TR	A	B	S	PF	TO	TP
Fort Lewis (EXH)	28^	5-6	.833	0-0	---	0-2	.000	7	8	15	0	0	1	2	0	10
College of Idaho	31^	4-7	.571	1-2	.500	0-0	---	4	1	5	2	0	1	2	3	9
SE Louisiana	25^	2-4	.500	0-1	.000	0-2	.000	0	1	1	0	1	0	0	0	4
Utah Tech	28^	4-7	.571	0-1	.000	0-1	.000	4	6	10	0	2	0	1	1	8
Arkansas State	34^	3-6	.500	0-0	---	2-2	1.000	4	5	9	1	0	0	3	4	8
Ball State	31^	2-5	.400	0-1	.000	3-4	.750	1	3	4	1	1	3	1	0	7
USC	25^	0-7	.000	0-3	.000	0-0	---	4	0	4	2	0	1	2	0	0
Weber State	25^	1-4	.250	0-1	.000	0-0	---	0	5	5	1	0	0	2	1	2
Utah Valley	24^	1-3	.333	0-0	---	0-2	.000	3	3	6	2	0	0	3	1	2
BYU																
Loyola Marymount																
Eastern Washington																
Air Force																
San Diego State																
Colorado State																
Boise State																
Nevada																
Fresno State																
Air Force																
San Jose State																
Wyoming																
New Mexico																
Colorado State																
Nevada																
Wyoming																
Fresno State																
Boise State																
UNLV																
New Mexico																
San Jose State																

^denotes start

SEASON AND CAREER HIGHS

Season High		Career High	Season High		Career High
9 (vs College of Idaho - 11/7/22)	Points	34 (MSU at Tennessee State - 1/23/21)	4 (vs Ball State - 11/23/22)	FT Attempted	10 (2 - MSU vs Northern Illinois - 12/4/21)
4 (2 - at Utah Tech - 11/15/22)	FG Made	14 (MSU at Tennessee State - 1/23/21)	10 (at Utah Tech - 11/15/22)	Rebounds	21 (MSU vs UIC - 11/25/20)
7 (3 - at USC - 11/26/22)	FG Attempted	20 (MSU at SIUE - 12/18/20)	2 (3 - vs. Utah Valley - 12/3/22)	Assists	4 (MSU vs Oakland City - 11/22/21)
1 (vs College of Idaho - 11/7/22)	3PT Made	3 (2 - MSU vs Austin Peay - 1/9/21)	3 (vs Ball State - 11/23/22)	Steals	5 (MSU vs Tennessee State - 2/6/21)
3 (at USC - 11/26/22)	3PT Attempted	6 (MSU at Wisconsin - 11/26/19)	2 (at Utah Tech - 11/15/22)	Blocks	3 (MSU at Tennessee State - 1/2/20)
3 (vs Ball State - 11/23/22)	FT Made	10 (2 - MSU vs Northern Illinois - 12/4/21)	31 (2 - vs Ball State - 11/23/22)	Minutes	47 (MSU vs Evansville - 11/20/21)

CAREER STATISTICS

	GP-GS	Min.	Avg.	FG-FGA	Pct.	3FG-FGA	Pct.	FT-FTA	Pct.	Off.	Def.	Total	Avg.	PF	DQ	A	TO	Blk.	Stl.	Pts.	Avg.
2018-19 (Fr.)*	27-13	488	18.1	60-121	.496	5-13	.385	44-60	.733	34	63	97	3.6	49	0	5	24	5	16	169	6.3
2019-20 (So.)*	31-31	901	29.1	143-308	.464	18-63	.286	61-77	.792	68	98	166	5.4	80	1	24	48	20	29	365	11.8
2020-21 (Jr.)*	25-24	783	31.3	142-288	.493	12-42	.286	67-84	.798	76	110	186	7.4	62	1	12	46	13	24	363	14.5
2021-22 (Sr.)*	30-30	885	29.5	122-283	.431	5-34	.147	89-105	.848	98	77	175	5.8	67	1	22	40	12	36	338	11.3
2022-23 (Gr.)	8-8	223	27.8	17-43	.395	1-9	.111	5-11	.455	19	22	41	5.1	14	0	9	8	4	5	40	5.0
Total	121-106	3277	27.1	484-1043	.464	41-161	.255	266-337	.789	295	370	665	5.5	272	3	72	166	54	110	1275	10.5

*at Eastern Illinois

2022-23 UTAH STATE AGGIES

43 ASHYA KLOPFENSTEIN

SENIOR | FORWARD

6-1 | TR

Howe, Indiana

Westview HS

Robert Morris / Dawson CC

HONORS: WBCA Two-Year College Coaches' All-America Team (2020-21); NJCAA All-Region XIII (2020-21); All-MON-DAK First-Team (2020-21); WBCA All-America Honorable Mention (2019-20); All-MON-DAK Second-Team (2019-20).

PREVIOUS SCHOOL: Spent her freshman and sophomore seasons at Dawson CC in Glendive, Montana, before competing her junior season at Robert Morris... Started all 24 games she appeared in at Robert Morris, averaging 8.1 points and 5.3 rebounds... Appeared in 50 games, starting 47, across two seasons at Dawson CC... Named WBCA All-America Honorable Mention and to the All-MON-DAK Second Team after averaging 13.1 points, 8.3 rebounds, and 3.3 steals per game as a freshman... Garnered NJCAA All-Region XIII and All-MON-DAK First Team accolades as a sophomore, averaging 16.2 points, 10.5 rebounds, and 3.0 steals per game... Named to the WBCA Two-Year College Coaches' All-America Team.

2022-23 GAME LOGS

Opp.	MP	FG-FGA	FG%	3FG-3FGA	3FG%	FT-FTA	FT%	OR	DR	TR	A	B	S	PF	TO	TP
Fort Lewis (EXH)	DNP	---	---	---	---	---	---	---	---	---	---	---	---	---	---	---
College of Idaho	DNP	---	---	---	---	---	---	---	---	---	---	---	---	---	---	---
SE Louisiana	DNP	---	---	---	---	---	---	---	---	---	---	---	---	---	---	---
Utah Tech	DNP	---	---	---	---	---	---	---	---	---	---	---	---	---	---	---
Arkansas State	DNP	---	---	---	---	---	---	---	---	---	---	---	---	---	---	---
Ball State	DNP	---	---	---	---	---	---	---	---	---	---	---	---	---	---	---
USC	DNP	---	---	---	---	---	---	---	---	---	---	---	---	---	---	---
Weber State	13	1-2	.500	0-0	---	2-2	1.000	0	3	3	1	0	0	1	2	4
Utah Valley	13	1-4	.250	0-0	---	0-0	---	0	0	0	0	0	0	0	1	2
BYU																
Loyola Marymount																
Eastern Washington																
Air Force																
San Diego State																
Colorado State																
Boise State																
Nevada																
Fresno State																
Air Force																
San Jose State																
Wyoming																
New Mexico																
Colorado State																
Nevada																
Wyoming																
Fresno State																
Boise State																
UNLV																
New Mexico																
San Jose State																

SEASON AND CAREER HIGHS

Season High	Career High	Season High	Career High
4 (at Weber State - 12/1/22)	16 (2 - RMU at Cleveland State - 2/13/22)	2 (at Weber State - 12/1/22)	6 (RMU vs. Purdue Fort Wayne - 1/1/22)
1 (at Weber State - 12/1/22)	8 (RMU at Cleveland State - 2/13/22)	3 (at Weber State - 12/1/22)	11 (RMU vs Wright State - 2/18/22)
4 (vs. Utah Valley - 12/3/22)	13 (RMU at Oakland - 11/20/21)	1 (at Weber State - 12/1/22)	3 (RMU vs. Green Bay - 12/2/21)
--	--	--	5 (RMU vs. UIC - 1/16/22)
--	2 (RMU at Morehead State - 11/24/21)	--	2 (3 - RMU at Cleveland State - 2/13/22)
2 (at Weber State - 12/1/22)	4 (4 - RMU at Purdue Fort Wayne - 2/11/22)	13 (2 - vs. Utah Valley - 12/3/22)	33 (RMU at Oakland - 11/20/21)

CAREER STATISTICS

	GP-GS	Min.	Avg.	FG-FGA	Pct.	3FG-FGA	Pct.	FT-FTA	Pct.	Off.	Def.	Total	Avg.	PF	DQ	A	TO	Blk.	Stl.	Pts.	Avg.
2021-22 (Jr.)*	24-24	577	24.0	81-160	.506	0-4	.000	32-47	.681	39	89	128	5.3	53	1	15	45	12	29	194	8.1
2022-23 (Sr.)	2-0	24	12.2	2-6	.333	0-0	.000	2-2	1.000	0	3	3	1.5	1	0	1	3	0	0	6	3.0
Total	26-24	602	23.2	83-166	.500	0-4	.000	34-49	.694	39	92	131	5.0	54	1	16	48	12	29	200	7.7

*at Robert Morris



0

**PRIMA
CHELLIS**

Gr. • Forward • 5-11 • TR
Phoenix, Arizona



1

**TAMIAH
ROBINSON**

Jr. • Guard • 5-9 • TR
Philadelphia, Pennsylvania



2

**ISABELLA
TAÑEDO**

Fr. • Guard • 5-5 • TR
Laurel, Maryland



3

**MARIA
CARVALHO**

Gr. • Guard • 5-8 • 2L
Lisbon, Portugal



5

**KINLEY
FALSLEV-WICKIZER**

Jr. • Guard • 5-8 • 2L
Benson, Utah



10

**CRISTINA
OLIVA**

So. • Guard • 5-9 • TR
Davis, California



12

**OLIVIA
MASON**

Sr. • Forward • 6-0 • TR
Kennett Square, Pennsylvania



15

**OLIVIA
WIKSTROM**

Jr. • Guard • 6-1 • 1L
Bainbridge Island, Washington



20

**LILLIAN
HARRIS**

So. • Forward • 6-2 • TR
Westminster, Maryland



21

**MAYSON
KIMBALL**

Gr. • Guard • 5-11 • TR
Webster, New Hampshire



23

**TIAIRRA
HILL-BROWN**

Fr. • Forward • 6-2 • HS
Las Vegas, Nevada



24

**NATALIE
FRALEY**

Fr. • Guard • 6-0 • HS
Kelso, Washington



41

**ABBY
WAHL**

Gr. • Forward • 6-1 • TR
Santa Claus, Indiana



43

**ASHYA
KLOPFENSTEIN**

Sr. • Forward • 6-1 • TR
Howe, Indiana



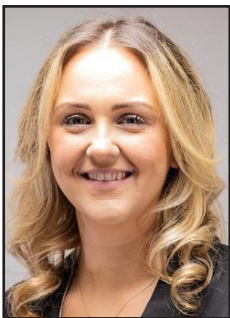
KAYLA ARD
Head Coach
Third Year



ROSS JAMES
Ast. Coach/Recruiting Coord.
First Year



ANDRE GIBBS
Ast. Coach/Recruiting Coord.
First Year



McKENZIE MANGINO
Assistant Coach
First Year



CLAIRE GRITT
Director of Operations
First Year



BRIANNA STEWART
Graduate Manager
First Year

2022-23 Women's Basketball Roster