



BYU at Kansas St.

02/24/24 Bramlage Coliseum, Manhattan
2023-24 Men's Basketball

Game Time: 1:01 PM
Game Duration: 2:16
Attendance: 9,117

Officials: Kelly Self, Rick Crawford, Amy Bonner

BYU - 74

Record: 19-8 (7-7)

NO.	Name	Min	FG	3P	FT	Rebounds			Fouls		TP	AS	TO	ST	Blocks		+/-
			M-A	M-A	M-A	OR	DR	TOT	PF	FD					BS	BA	
0	Noah Waterman	F 30:09	3-9	2-5	4-6	2	5	7	4	3	12	0	1	1	1	1	-2
50	Aly Khalifa	C 16:35	1-4	0-3	1-2	1	0	1	1	2	3	5	0	0	2	0	-14
20	Spencer Johnson	G 30:00	4-8	2-6	2-2	3	2	5	0	5	12	2	1	0	0	0	-17
21	Trevin Knell	G 22:03	1-4	0-1	0-0	1	1	2	2	1	2	0	0	1	0	0	-7
30	Dallin Hall	G 31:48	1-10	0-5	1-3	1	2	3	2	2	3	8	3	2	0	0	2
2	Jaxson Robinson	23:00	7-17	1-9	0-1	0	1	1	4	1	15	0	2	1	0	0	-5
45	Fousseyni Traore	11:47	4-6	0-0	2-2	4	1	5	2	1	10	2	0	0	0	0	2
15	Richie Saunders	20:35	5-8	1-2	0-0	1	5	6	4	0	11	2	0	3	0	0	-5
1	Trey Stewart	04:08	0-0	0-0	0-0	1	0	1	1	0	0	0	1	0	0	0	-6
4	Atiki Ally Atiki	09:55	3-5	0-0	0-0	3	0	3	1	0	6	0	0	0	0	0	2
Team						2	2	4			0						
Totals			29-71	6-31	10-16	19	19	38	21	15	74	19	8	8	3	1	-10

Shooting By Period		
1 st FG%	14-31	45.2%
3PT%	4-16	25.0%
FT%	6-6	100%
2 nd FG%	15-40	37.5%
3PT%	2-15	13.3%
FT%	4-10	40%
GM FG%	29-71	40.8%
3PT%	6-31	19.4%
FT%	10-16	62.5%

Dead Ball Rebounds: 2, 0

Technical Fouls::NONE

Kansas St. - 84

Record: 16-11 (6-8)

NO.	Name	Min	FG	3P	FT	Rebounds			Fouls		TP	AS	TO	ST	Blocks		+/-
			M-A	M-A	M-A	OR	DR	TOT	PF	FD					BS	BA	
24	Arthur Kaluma	F 39:08	8-11	2-3	10-12	0	10	10	1	7	28	4	2	1	0	0	10
20	Jerrell Colbert	C 19:38	1-3	0-0	0-2	1	3	4	2	1	2	1	0	1	1	0	7
2	Tylor Perry	G 36:29	4-8	4-7	4-5	0	3	3	2	5	16	5	3	1	0	0	13
4	Dai Dai Ames	G 23:16	1-3	1-2	0-0	0	0	0	2	0	3	4	2	0	0	1	12
5	Cam Carter	G 32:29	4-9	0-3	4-4	1	3	4	4	3	12	3	2	1	0	1	5
13	Will McNair Jr.	19:52	4-5	0-0	3-4	1	2	3	2	2	11	2	1	0	0	0	3
1	David N'Guessan	24:03	5-9	0-0	2-4	2	3	5	2	3	12	1	2	1	0	1	1
8	RJ Jones	05:05	0-0	0-0	0-0	0	0	0	0	0	0	0	0	0	0	0	-1
Team						1	3	4			0		1				
Totals			27-48	7-15	23-31	6	27	33	15	21	84	20	13	5	1	3	10

Shooting By Period		
1 st FG%	14-28	50.0%
3PT%	6-10	60.0%
FT%	8-9	88.9%
2 nd FG%	13-20	65.0%
3PT%	1-5	20.0%
FT%	15-22	68.2%
GM FG%	27-48	56.3%
3PT%	7-15	46.7%
FT%	23-31	74.2%

Dead Ball Rebounds: 4, 0

Technical Fouls::NONE

	BYU	KState
Biggest lead	0 (1 st 20:00)	16 (2 nd 11:00)
Best Scoring Run	10(1 st 14:05)	8(1 st 17:47)
Lead Changes	0	
Times Tied	1	
Time with Lead	00:00	38:34

Points from	BYU	KState
Turnovers	22	9
Paint	40	34
Second Chance	14	10
Fast Breaks	5	12
Bench	42	23

	Period by Period Scoring		
	1st	2nd	TOT
BYU	38	36	74
KState	42	42	84



Period 1

Quarter Starters:

KState	2 Perry T	4 Ames D	5 Carter C	20 Colbert J	24 Kaluma A
BYU	0 Waterman N	20 Johnson S	21 Knell T	30 Hall D	50 Khalifa A

Game Time	KState	Score	Diff	BYU
20:00	20 COLBERT J jumpball lost			0 WATERMAN N jumpball won
19:29				30 HALL D 3pt FG , jump shot missed
19:27	defensive rebound (1)			
19:05	4 AMES D 2pt FG in the paint, driving layup blocked			
19:05				50 KHALIFA A block (1)
19:05	offensive rebound (2)			
19:00	2 PERRY T 3pt FG second chance, jump shot made (3)	3-0	3	
19:00	5 CARTER C assist (1)			
18:47				50 KHALIFA A 3pt FG , jump shot missed
18:44	24 KALUMA A defensive rebound (1)			
18:34	24 KALUMA A 2pt FG in the paint, driving layup made (2)	5-0	5	
18:18				0 WATERMAN N 3pt FG , jump shot missed
18:16	defensive rebound (4)			
17:47	2 PERRY T 3pt FG , jump shot made (6)	8-0	8	
17:47	24 KALUMA A assist (1)			
17:30		8-2	6	21 KNELL T 2pt FG in the paint, layup made (2)
17:30				50 KHALIFA A assist (1)
17:14	24 KALUMA A foul drawn (1)			0 WATERMAN N foul shooting (1 - 1)
17:14	24 KALUMA A free throw 1 - 2 made (3)	9-2	7	
17:14	24 KALUMA A free throw 2 - 2 made (4)	10-2	8	
16:55	2 PERRY T steal (1)			20 JOHNSON S turnover lost ball (1)
16:49	20 COLBERT J 2pt FG from turnover in the paint, layup missed			
16:44	5 CARTER C offensive rebound (1)			
16:44	5 CARTER C 2pt FG from turnover second chance in the paint, layup made (2)	12-2	10	
16:39				Timeout 30 Sec
16:39				20 JOHNSON S substitution out
16:39				50 KHALIFA A substitution out
16:39				2 ROBINSON J substitution in
16:39				45 TRAORE F substitution in
16:34				30 HALL D turnover bad pass (1)
16:34	20 COLBERT J substitution out			
16:34	13 MCNAIR JR. W substitution in			
16:02	13 MCNAIR JR. W 2pt FG from turnover in the paint, jump shot missed			
15:59				45 TRAORE F defensive rebound (1)
15:56	13 MCNAIR JR. W foul shooting (1 - 1)			0 WATERMAN N foul drawn (1)
15:56				Timeout media
15:56	4 AMES D substitution out			
15:56	1 N'GUESSAN D substitution in			
15:56		12-3	9	0 WATERMAN N free throw 1 - 2 made (1)
15:56		12-4	8	0 WATERMAN N free throw 2 - 2 made (2)
15:42	2 PERRY T foul drawn (1)			2 ROBINSON J foul personal (1 - 2)
15:40	2 PERRY T 3pt FG , jump shot made (9)	15-4	11	



BYU at Kansas St.

02/24/24 Bramlage Coliseum, Manhattan
2023-24 Men's Basketball

Game Time: 1:01 PM
Game Duration: 2:16
Attendance: 9,117

Officials: Kelly Self, Rick Crawford, Amy Bonner

Game Time	KState	Score	Diff	BYU
15:40	13 MCNAIR JR. W assist (1)			
15:40	2 PERRY T foul drawn (2)			2 ROBINSON J foul shooting (2 - 3)
15:40	2 PERRY T free throw 1 - 1 made (10)	16-4	12	
15:26		16-7	9	2 ROBINSON J 3pt FG , jump shot made (3)
15:26				45 TRAORE F assist (1)
15:10	13 MCNAIR JR. W turnover lost ball (1)			21 KNELL T steal (1)
14:59		16-9	7	2 ROBINSON J 2pt FG from turnover in the paint, turnaround jump shot made (5)
14:34	1 N'GUESSAN D 2pt FG in the paint, pull up jump shot missed			
14:30				30 HALL D defensive rebound (1)
14:25	13 MCNAIR JR. W foul shooting (2 - 2)			0 WATERMAN N foul drawn (2)
14:25		16-10	6	0 WATERMAN N free throw 1 - 2 made (3)
14:25	13 MCNAIR JR. W substitution out			
14:25	20 COLBERT J substitution in			
14:25				2 ROBINSON J substitution out
14:25				15 SAUNDERS R substitution in
14:25		16-11	5	0 WATERMAN N free throw 2 - 2 made (4)
14:14	5 CARTER C 2pt FG in the paint, driving layup blocked			
14:14				0 WATERMAN N block (1)
14:10				0 WATERMAN N defensive rebound (1)
14:05		16-14	2	0 WATERMAN N 3pt FG , jump shot made (7)
14:05				45 TRAORE F assist (2)
13:57	Timeout 30 Sec			
13:57				30 HALL D substitution out
13:57				1 STEWART T substitution in
13:37	2 PERRY T 3pt FG , jump shot missed			
13:35				defensive rebound (4)
13:35	24 KALUMA A substitution out			
13:35	4 AMES D substitution in			
13:35				45 TRAORE F substitution out
13:35				50 KHALIFA A substitution in
13:23	20 COLBERT J foul personal (1 - 3)			50 KHALIFA A foul drawn (1)
13:03				0 WATERMAN N 2pt FG outside the paint, step back jump shot missed
12:58				1 STEWART T offensive rebound (1)
12:57	5 CARTER C steal (1)			1 STEWART T turnover lost ball (1)
12:43	1 N'GUESSAN D 2pt FG from turnover in the paint, layup missed			
12:43	20 COLBERT J offensive rebound (1)			
12:43	1 N'GUESSAN D foul drawn (1)			1 STEWART T foul shooting (1 - 4)
12:43	1 N'GUESSAN D free throw 1 - 2 missed			
12:43	offensive dead ball rebound (1)			
12:43	5 CARTER C substitution out			
12:43	24 KALUMA A substitution in			
12:43				0 WATERMAN N substitution out
12:43				2 ROBINSON J substitution in
12:43	1 N'GUESSAN D free throw 2 - 2 made (1)	17-14	3	
12:23		17-16	1	2 ROBINSON J 2pt FG in the paint, driving layup made (7)
12:23				50 KHALIFA A assist (2)
11:56	24 KALUMA A 3pt FG , jump shot made (7)	20-16	4	
11:56	4 AMES D assist (1)			



BYU at Kansas St.

02/24/24 Bramlage Coliseum, Manhattan
2023-24 Men's Basketball

Game Time: 1:01 PM
Game Duration: 2:16
Attendance: 9,117

Officials: Kelly Self, Rick Crawford, Amy Bonner

Game Time	KState	Score	Diff	BYU
11:43				2 ROBINSON J 3pt FG , pull up jump shot missed
11:38	24 KALUMA A defensive rebound (2)			
11:36	1 N'GUESSAN D foul offensive (1 - 4)			21 KNELL T foul drawn (1)
11:36	1 N'GUESSAN D turnover offensive (1)			
11:36	Timeout media			
11:36	2 PERRY T substitution out			
11:36	5 CARTER C substitution in			
11:36				1 STEWART T substitution out
11:36				21 KNELL T substitution out
11:36				20 JOHNSON S substitution in
11:36				30 HALL D substitution in
11:24		20-18	2	2 ROBINSON J 2pt FG from turnover outside the paint, pull up jump shot made (9)
11:24				50 KHALIFA A assist (3)
11:02	24 KALUMA A 2pt FG in the paint, pull up jump shot made (9)	22-18	4	
10:50				15 SAUNDERS R 2pt FG outside the paint, floating jump shot missed
10:47	5 CARTER C defensive rebound (2)			
10:42	5 CARTER C 2pt FG fast break outside the paint, pull up jump shot made (4)	24-18	6	
10:27				2 ROBINSON J 3pt FG , jump shot missed
10:21	20 COLBERT J defensive rebound (2)			
10:18	5 CARTER C foul offensive (1 - 5)			20 JOHNSON S foul drawn (1)
10:18	5 CARTER C turnover offensive (1)			
10:18	1 N'GUESSAN D substitution out			
10:18	2 PERRY T substitution in			
10:18				15 SAUNDERS R substitution out
10:18				0 WATERMAN N substitution in
09:55		24-20	4	20 JOHNSON S 2pt FG from turnover in the paint, driving layup made (2)
09:55				30 HALL D assist (1)
09:33	5 CARTER C 3pt FG , jump shot missed			
09:30				30 HALL D defensive rebound (2)
09:26	4 AMES D foul personal (1 - 6)			20 JOHNSON S foul drawn (2)
09:26	20 COLBERT J substitution out			
09:26	13 MCNAIR JR. W substitution in			
09:26				50 KHALIFA A substitution out
09:26				45 TRAORE F substitution in
09:17				30 HALL D 2pt FG in the paint, driving layup missed
09:14				45 TRAORE F offensive rebound (2)
09:06				45 TRAORE F 2pt FG second chance in the paint, layup missed
09:03				45 TRAORE F offensive rebound (3)
09:03		24-22	2	45 TRAORE F 2pt FG second chance in the paint, layup made (2)
08:47	13 MCNAIR JR. W 2pt FG in the paint, layup made (2)	26-22	4	
08:47	4 AMES D assist (2)			
08:28		26-24	2	45 TRAORE F 2pt FG in the paint, layup made (4)
08:28				20 JOHNSON S assist (1)
08:05	13 MCNAIR JR. W 2pt FG in the paint, layup made (4)	28-24	4	
08:05	2 PERRY T assist (1)			
07:43				2 ROBINSON J 3pt FG , pull up jump shot missed



BYU at Kansas St.

02/24/24 Bramlage Coliseum, Manhattan
2023-24 Men's Basketball

Game Time: 1:01 PM
Game Duration: 2:16
Attendance: 9,117

Officials: Kelly Self, Rick Crawford, Amy Bonner

Game Time	KState	Score	Diff	BYU
07:40				45 TRAORE F offensive rebound (4)
07:38				2 ROBINSON J 3pt FG second chance, jump shot missed
07:35	13 MCNAIR JR. W defensive rebound (1)			
07:26	2 PERRY T turnover bad pass (1)			2 ROBINSON J steal (1)
07:18	5 CARTER C foul shooting (2 - 7)			20 JOHNSON S foul drawn (3)
07:18	Timeout media			
07:18	4 AMES D substitution out			
07:18	1 N'GUESSAN D substitution in			
07:18				2 ROBINSON J substitution out
07:18				21 KNELL T substitution in
07:18		28-25	3	20 JOHNSON S free throw 1 - 2 made (3)
07:18		28-26	2	20 JOHNSON S free throw 2 - 2 made (4)
06:47	24 KALUMA A 3pt FG , jump shot missed			
06:47	13 MCNAIR JR. W offensive rebound (2)			
06:47	turnover shot clock (5)			
06:46	5 CARTER C substitution out			
06:46	4 AMES D substitution in			
06:35		28-28	0	45 TRAORE F 2pt FG from turnover in the paint, layup made (6)
06:35				30 HALL D assist (2)
06:14	24 KALUMA A 2pt FG in the paint, layup missed			
06:09	1 N'GUESSAN D offensive rebound (1)			
06:09	1 N'GUESSAN D 2pt FG second chance in the paint, layup made (3)	30-28	2	
06:02				20 JOHNSON S 3pt FG , jump shot missed
05:57	24 KALUMA A defensive rebound (3)			
05:35	4 AMES D 3pt FG , jump shot made (3)	33-28	5	
05:35	2 PERRY T assist (2)			
05:09	13 MCNAIR JR. W substitution out			
05:09	20 COLBERT J substitution in			
05:09				21 KNELL T substitution out
05:09				45 TRAORE F substitution out
05:09				15 SAUNDERS R substitution in
05:09				50 KHALIFA A substitution in
05:02				30 HALL D 2pt FG in the paint, driving layup missed
04:59				50 KHALIFA A offensive rebound (1)
04:54		33-30	3	20 JOHNSON S 2pt FG second chance in the paint, jump shot made (6)
04:54				15 SAUNDERS R assist (1)
04:31	24 KALUMA A 3pt FG , jump shot made (12)	36-30	6	
04:31	4 AMES D assist (3)			
04:13				0 WATERMAN N 3pt FG , pull up jump shot missed
04:09	24 KALUMA A defensive rebound (4)			
04:03	2 PERRY T turnover lost ball (2)			15 SAUNDERS R steal (1)
04:03				0 WATERMAN N substitution out
04:03				2 ROBINSON J substitution in
03:48		36-33	3	15 SAUNDERS R 3pt FG from turnover, jump shot made (3)
03:48				50 KHALIFA A assist (4)
03:30	4 AMES D 3pt FG , pull up jump shot missed			
03:25				15 SAUNDERS R defensive rebound (1)
03:21				50 KHALIFA A 3pt FG , jump shot missed



BYU at Kansas St.

02/24/24 Bramlage Coliseum, Manhattan
2023-24 Men's Basketball

Game Time: 1:01 PM
Game Duration: 2:16
Attendance: 9,117

Officials: Kelly Self, Rick Crawford, Amy Bonner

Game Time	KState	Score	Diff	BYU
03:17	24 KALUMA A defensive rebound (5)			
03:14	24 KALUMA A foul drawn (2)			15 SAUNDERS R foul shooting (1 - 5)
03:14	Timeout media			
03:14	4 AMES D substitution out			
03:14	5 CARTER C substitution in			
03:14	24 KALUMA A free throw fast break 1 - 2 made (13)	37-33	4	
03:14	24 KALUMA A free throw fast break 2 - 2 made (14)	38-33	5	
03:02				30 HALL D 3pt FG , pull up jump shot missed
02:58	24 KALUMA A defensive rebound (6)			
02:32	20 COLBERT J 2pt FG in the paint, pull up jump shot missed			
02:32	1 N'GUESSAN D offensive rebound (2)			
02:32	1 N'GUESSAN D foul drawn (2)			30 HALL D foul personal (1 - 6)
02:32				2 ROBINSON J substitution out
02:32				21 KNELL T substitution in
02:17	20 COLBERT J 2pt FG second chance in the paint, dunk, made (2)	40-33	7	
02:17	1 N'GUESSAN D assist (1)			
01:55		40-36	4	20 JOHNSON S 3pt FG , jump shot made (9)
01:55				50 KHALIFA A assist (5)
01:36	5 CARTER C 2pt FG outside the paint, pull up jump shot missed			
01:33				20 JOHNSON S defensive rebound (1)
01:31				15 SAUNDERS R 3pt FG , jump shot missed
01:27	1 N'GUESSAN D defensive rebound (3)			
01:10	2 PERRY T turnover travel (3)			
01:10	5 CARTER C substitution out			
01:10	20 COLBERT J substitution out			
01:10	4 AMES D substitution in			
01:10	13 MCNAIR JR. W substitution in			
00:51	1 N'GUESSAN D steal (1)			30 HALL D turnover bad pass (2)
00:45	24 KALUMA A foul drawn (3)			15 SAUNDERS R foul shooting (2 - 7)
00:45	24 KALUMA A free throw 1 - 2 made (15)	41-36	5	
00:45				15 SAUNDERS R substitution out
00:45				21 KNELL T substitution out
00:45				0 WATERMAN N substitution in
00:45				2 ROBINSON J substitution in
00:45				50 KHALIFA A substitution out
00:45				45 TRAORE F substitution in
00:45	24 KALUMA A free throw 2 - 2 made (16)	42-36	6	
00:22		42-38	4	45 TRAORE F 2pt FG in the paint, hook shot made (8)
00:21				Timeout 30 Sec
00:21	13 MCNAIR JR. W substitution out			
00:21	5 CARTER C substitution in			
00:21				2 ROBINSON J substitution out
00:21				15 SAUNDERS R substitution in
00:02	1 N'GUESSAN D 2pt FG in the paint, layup missed			
00:00				15 SAUNDERS R defensive rebound (2)
END OF PERIOD				
KState 42-38 BYU				



BYU at Kansas St.

02/24/24 Bramlage Coliseum, Manhattan
2023-24 Men's Basketball

Game Time: 1:01 PM
Game Duration: 2:16
Attendance: 9,117

Officials: Kelly Self, Rick Crawford, Amy Bonner

BYU - 38

NO.	Name	Min	FG	3P	FT	Rebounds			Fouls		TP	AS	TO	ST	Blocks		+/-
			M-A	M-A	M-A	OR	DR	TOT	PF	FD					BS	BA	
0	Noah Waterman	F 14:17	1-4	1-3	4-4	0	1	1	1	2	7	0	0	0	1	0	-1
50	Aly Khalifa	C 11:54	0-2	0-2	0-0	1	0	1	0	1	0	5	0	0	1	0	-12
20	Spencer Johnson	G 14:57	3-4	1-2	2-2	0	1	1	0	3	9	1	1	0	0	0	-10
21	Trevin Knell	G 12:20	1-1	0-0	0-0	0	0	0	0	1	2	0	0	1	0	0	-5
30	Dallin Hall	G 17:39	0-4	0-2	0-0	0	2	2	1	0	0	2	2	0	0	0	-2
2	Jaxson Robinson	09:33	4-8	1-5	0-0	0	0	0	2	0	9	0	0	1	0	0	4
45	Fousseyni Traore	08:06	4-5	0-0	0-0	3	1	4	0	0	8	2	0	0	0	0	8
15	Richie Saunders	08:53	1-3	1-2	0-0	0	2	2	2	0	3	1	0	1	0	0	0
1	Trey Stewart	02:21	0-0	0-0	0-0	1	0	1	1	0	0	0	1	0	0	0	-2
Team						0	1	1			0		0				
Totals			14-31	4-16	6-6	5	8	13	7	7	38	11	4	3	2	0	-4

Shooting By Period		
1st FG%	14-31	45.2%
3PT%	4-16	25.0%
FT%	6-6	100%
GM FG%	14-31	45.2%
3PT%	4-16	25.0%
FT%	6-6	100.0%

Dead Ball Rebounds: 0, 0

Technical Fouls::NONE

Kansas St. - 42

NO.	Name	Min	FG	3P	FT	Rebounds			Fouls		TP	AS	TO	ST	Blocks		+/-
			M-A	M-A	M-A	OR	DR	TOT	PF	FD					BS	BA	
24	Arthur Kaluma	F 19:08	4-6	2-3	6-6	0	6	6	0	3	16	1	0	0	0	0	4
20	Jerrell Colbert	C 12:24	1-3	0-0	0-0	1	1	2	1	0	2	0	0	0	0	0	7
2	Tylor Perry	G 18:42	3-4	3-4	1-1	0	0	0	0	2	10	2	3	1	0	0	2
4	Dai Dai Ames	G 15:03	1-3	1-2	0-0	0	0	0	1	0	3	3	0	0	0	1	13
5	Cam Carter	G 14:33	2-5	0-1	0-0	1	1	2	2	0	4	1	1	1	0	1	1
13	Will McNair Jr.	07:14	2-3	0-0	0-0	1	1	2	2	0	4	1	1	0	0	0	-3
1	David N'Guessan	12:56	1-4	0-0	1-2	2	1	3	1	2	3	1	1	1	0	0	-4
Team						1	2	3			0		1				
Totals			14-28	6-10	8-9	6	12	18	7	7	42	9	7	3	0	2	4

Shooting By Period		
1st FG%	14-28	50.0%
3PT%	6-10	60.0%
FT%	8-9	88.9%
GM FG%	14-28	50.0%
3PT%	6-10	60.0%
FT%	8-9	88.9%

Dead Ball Rebounds: 1, 0

Technical Fouls::NONE

	BYU	KState
Biggest lead	0 (1 st 20:00)	12 (1 st 15:40)
Best Scoring Run	10(1 st 14:05)	8(1 st 17:47)
Lead Changes	0	
Times Tied	1	
Time with Lead	00:00	18:34

Points from	BYU	KState
Turnovers	13	5
Paint	18	14
Second Chance	4	10
Fast Breaks	0	4
Bench	20	7

	Period by Period Scoring		
	1st	2nd	TOT
BYU	38	36	74
KState	42	42	84



Period 2

Quarter Starters:

KState	2 Perry T	4 Ames D	5 Carter C	20 Colbert J	24 Kaluma A
BYU	0 Waterman N	20 Johnson S	21 Knell T	30 Hall D	50 Khalifa A

Game Time	KState	Score	Diff	BYU
20:00	1 N'GUESSAN D substitution out			
20:00	20 COLBERT J substitution in			
20:00				15 SAUNDERS R substitution out
20:00				45 TRAORE F substitution out
20:00				21 KNELL T substitution in
20:00				50 KHALIFA A substitution in
19:31	24 KALUMA A 2pt FG outside the paint, pull up jump shot made (18)	44-38	6	
19:31	4 AMES D assist (4)			
19:31	24 KALUMA A foul drawn (4)			50 KHALIFA A foul shooting (1 - 1)
19:31	24 KALUMA A free throw 1 - 1 made (19)	45-38	7	
19:22	20 COLBERT J steal (1)			30 HALL D turnover bad pass (3)
19:18	5 CARTER C 2pt FG from turnover in the paint, driving layup made (6)	47-38	9	
19:18	20 COLBERT J assist (1)			
19:06		47-40	7	30 HALL D 2pt FG in the paint, driving layup made (2)
18:42	24 KALUMA A 2pt FG outside the paint, turnaround jump shot made (21)	49-40	9	
18:23		49-42	7	50 KHALIFA A 2pt FG in the paint, driving layup made (2)
18:23				20 JOHNSON S assist (2)
18:11	20 COLBERT J foul drawn (1)			21 KNELL T foul shooting (1 - 2)
18:11	20 COLBERT J free throw 1 - 2 missed			
18:11	offensive dead ball rebound (2)			
18:11	20 COLBERT J free throw 2 - 2 missed			
18:08				0 WATERMAN N defensive rebound (2)
17:43	2 PERRY T foul shooting (1 - 1)			50 KHALIFA A foul drawn (2)
17:43				50 KHALIFA A free throw 1 - 2 missed
17:43				offensive dead ball rebound (1)
17:43		49-43	6	50 KHALIFA A free throw 2 - 2 made (3)
17:19	5 CARTER C 3pt FG , jump shot missed			
17:14				0 WATERMAN N defensive rebound (3)
16:56				0 WATERMAN N turnover lost ball (1)
16:56	20 COLBERT J substitution out			
16:56	13 MCNAIR JR. W substitution in			
16:56				50 KHALIFA A substitution out
16:56				45 TRAORE F substitution in
16:35	5 CARTER C foul drawn (1)			21 KNELL T foul personal (2 - 3)
16:28	5 CARTER C foul offensive (3 - 2)			20 JOHNSON S foul drawn (4)
16:28	5 CARTER C turnover offensive (2)			
16:15				21 KNELL T 3pt FG from turnover, jump shot missed
16:12				20 JOHNSON S offensive rebound (2)
16:12	5 CARTER C substitution out			
16:12	1 N'GUESSAN D substitution in			



BYU at Kansas St.

02/24/24 Bramlage Coliseum, Manhattan
2023-24 Men's Basketball

Game Time: 1:01 PM
Game Duration: 2:16
Attendance: 9,117

Officials: Kelly Self, Rick Crawford, Amy Bonner

Game Time	KState	Score	Diff	BYU
16:03				30 HALL D 2pt FG from turnover second chance in the paint, turnaround jump shot missed
16:01	2 PERRY T defensive rebound (1)			
15:58	Timeout media			
15:58	13 MCNAIR JR. W substitution out			
15:58	20 COLBERT J substitution in			
15:58				21 KNELL T substitution out
15:58				2 ROBINSON J substitution in
15:50	24 KALUMA A foul drawn (5)			0 WATERMAN N foul personal (2 - 4)
15:38	2 PERRY T foul drawn (3)			45 TRAORE F foul shooting (1 - 5)
15:38	2 PERRY T free throw 1 - 2 made (11)	50-43	7	
15:38	2 PERRY T free throw 2 - 2 made (12)	51-43	8	
15:26				20 JOHNSON S 3pt FG , jump shot missed
15:23	2 PERRY T defensive rebound (2)			
15:10	1 N'GUESSAN D 2pt FG in the paint, layup made (5)	53-43	10	
15:10	2 PERRY T assist (3)			
15:02				2 ROBINSON J 3pt FG , jump shot missed
14:58				45 TRAORE F offensive rebound (5)
14:58	20 COLBERT J foul shooting (2 - 3)			45 TRAORE F foul drawn (1)
14:58		53-44	9	45 TRAORE F free throw 1 - 2 made (9)
14:58	20 COLBERT J substitution out			
14:58	13 MCNAIR JR. W substitution in			
14:58				30 HALL D substitution out
14:58				15 SAUNDERS R substitution in
14:58		53-45	8	45 TRAORE F free throw 2 - 2 made (10)
14:38	1 N'GUESSAN D 2pt FG in the paint, layup made (7)	55-45	10	
14:38	2 PERRY T assist (4)			
14:18				45 TRAORE F 2pt FG in the paint, hook shot missed
14:16				20 JOHNSON S offensive rebound (3)
14:16	24 KALUMA A foul personal (1 - 4)			20 JOHNSON S foul drawn (5)
14:08		55-47	8	2 ROBINSON J 2pt FG second chance in the paint, turnaround jump shot made (11)
14:08	4 AMES D foul shooting (2 - 5)			2 ROBINSON J foul drawn (1)
14:08	4 AMES D substitution out			
14:08	5 CARTER C substitution in			
14:08				2 ROBINSON J free throw 1 - 1 missed
14:06	24 KALUMA A defensive rebound (7)			
13:46	2 PERRY T 3pt FG , jump shot made (15)	58-47	11	
13:46	24 KALUMA A assist (2)			
13:36	1 N'GUESSAN D foul shooting (2 - 6)			0 WATERMAN N foul drawn (3)
13:36				0 WATERMAN N free throw 1 - 2 missed
13:36				offensive dead ball rebound (2)
13:36				0 WATERMAN N free throw 2 - 2 missed
13:35	13 MCNAIR JR. W defensive rebound (3)			
13:15	1 N'GUESSAN D foul drawn (3)			45 TRAORE F foul shooting (2 - 6)
13:15	1 N'GUESSAN D free throw 1 - 2 made (8)	59-47	12	
13:15				0 WATERMAN N substitution out
13:15				45 TRAORE F substitution out
13:15				30 HALL D substitution in
13:15				50 KHALIFA A substitution in



BYU at Kansas St.

02/24/24 Bramlage Coliseum, Manhattan
2023-24 Men's Basketball

Game Time: 1:01 PM
Game Duration: 2:16
Attendance: 9,117

Officials: Kelly Self, Rick Crawford, Amy Bonner

Game Time	KState	Score	Diff	BYU
13:15	1 N'GUESSAN D free throw 2 - 2 missed			
13:13				defensive rebound (19)
12:52	24 KALUMA A steal (1)			2 ROBINSON J turnover bad pass (1)
12:47	5 CARTER C foul drawn (2)			30 HALL D foul shooting (2 - 7)
12:47	5 CARTER C free throw fast break 1 - 2 made (7)	60-47	13	
12:47	5 CARTER C free throw fast break 2 - 2 made (8)	61-47	14	
12:39	2 PERRY T foul personal (2 - 7)			30 HALL D foul drawn (1)
12:39				30 HALL D 1&1 free throw 1 missed
12:37	24 KALUMA A defensive rebound (8)			
12:27	1 N'GUESSAN D turnover bad pass (2)			30 HALL D steal (1)
12:23		61-49	12	15 SAUNDERS R 2pt FG fast break from turnover in the paint, driving layup made (5)
12:23				30 HALL D assist (3)
11:59	1 N'GUESSAN D 2pt FG in the paint, layup blocked			
11:59				50 KHALIFA A block (2)
11:55				15 SAUNDERS R defensive rebound (3)
11:53				30 HALL D 3pt FG , pull up jump shot missed
11:50				15 SAUNDERS R offensive rebound (4)
11:48				50 KHALIFA A 3pt FG second chance, jump shot missed
11:44				30 HALL D offensive rebound (3)
11:40				30 HALL D 3pt FG second chance, jump shot missed
11:38	5 CARTER C defensive rebound (3)			
11:38	5 CARTER C foul drawn (3)			15 SAUNDERS R foul personal (3 - 8)
11:38	Timeout media			
11:38	1 N'GUESSAN D substitution out			
11:38	8 JONES R substitution in			
11:38				20 JOHNSON S substitution out
11:38				30 HALL D substitution out
11:38				50 KHALIFA A substitution out
11:38				1 STEWART T substitution in
11:38				4 ALLY ATIKI A substitution in
11:38				21 KNELL T substitution in
11:38	5 CARTER C 1&1 free throw 1 made (9)	62-49	13	
11:38	5 CARTER C 1&1 free throw 2 made (10)	63-49	14	
11:23				2 ROBINSON J 2pt FG in the paint, pull up jump shot missed
11:20	2 PERRY T defensive rebound (3)			
11:00	13 MCNAIR JR. W foul drawn (1)			4 ALLY ATIKI A foul personal (1 - 9)
11:00	13 MCNAIR JR. W 1&1 free throw 1 made (5)	64-49	15	
11:00	13 MCNAIR JR. W 1&1 free throw 2 made (6)	65-49	16	
10:49				15 SAUNDERS R 2pt FG outside the paint, pull up jump shot missed
10:46				4 ALLY ATIKI A offensive rebound (1)
10:42				2 ROBINSON J 3pt FG second chance, pull up jump shot missed
10:39	24 KALUMA A defensive rebound (9)			
10:20	5 CARTER C 3pt FG , jump shot missed			
10:16				2 ROBINSON J defensive rebound (1)
09:54				2 ROBINSON J 3pt FG , pull up jump shot missed
09:51				offensive rebound (25)
09:51	13 MCNAIR JR. W substitution out			



BYU at Kansas St.

02/24/24 Bramlage Coliseum, Manhattan
2023-24 Men's Basketball

Game Time: 1:01 PM
Game Duration: 2:16
Attendance: 9,117

Officials: Kelly Self, Rick Crawford, Amy Bonner

Game Time	KState	Score	Diff	BYU
09:51	20 COLBERT J substitution in			
09:51				1 STEWART T substitution out
09:51				15 SAUNDERS R substitution out
09:51				0 WATERMAN N substitution in
09:51				30 HALL D substitution in
09:47				30 HALL D 2pt FG second chance in the paint, driving layup missed
09:42				4 ALLY ATIKI A offensive rebound (2)
09:42				4 ALLY ATIKI A 2pt FG second chance in the paint, dunk, missed
09:41	20 COLBERT J defensive rebound (3)			
09:39	2 PERRY T 3pt FG , jump shot missed			
09:37				21 KNELL T defensive rebound (1)
09:25				0 WATERMAN N 2pt FG in the paint, layup blocked
09:25	20 COLBERT J block (1)			
09:20				4 ALLY ATIKI A offensive rebound (3)
09:17		65-51	14	4 ALLY ATIKI A 2pt FG second chance in the paint, hook shot made (2)
08:54	24 KALUMA A foul drawn (6)			2 ROBINSON J foul shooting (3 - 10)
08:54	24 KALUMA A free throw 1 - 3 made (22)	66-51	15	
08:54	24 KALUMA A free throw 2 - 3 made (23)	67-51	16	
08:54	2 PERRY T substitution out			
08:54	4 AMES D substitution in			
08:54	24 KALUMA A free throw 3 - 3 missed			
08:53				0 WATERMAN N defensive rebound (4)
08:43				30 HALL D 3pt FG , pull up jump shot missed
08:37				0 WATERMAN N offensive rebound (5)
08:37		67-53	14	0 WATERMAN N 2pt FG second chance in the paint, layup made (9)
08:21	24 KALUMA A 2pt FG in the paint, driving layup made (25)	69-53	16	
08:01		69-56	13	0 WATERMAN N 3pt FG , jump shot made (12)
08:01				30 HALL D assist (4)
07:45	24 KALUMA A 2pt FG in the paint, pull up jump shot missed			
07:41				0 WATERMAN N defensive rebound (6)
07:33				4 ALLY ATIKI A 2pt FG in the paint, hook shot missed
07:31	20 COLBERT J defensive rebound (4)			
07:09	4 AMES D turnover bad pass (1)			0 WATERMAN N steal (1)
06:47		69-58	11	4 ALLY ATIKI A 2pt FG from turnover in the paint, dunk, made (4)
06:47				30 HALL D assist (5)
06:41	Timeout 30 Sec			
06:41				Timeout media
06:41	4 AMES D substitution out			
06:41	8 JONES R substitution out			
06:41	20 COLBERT J substitution out			
06:41	1 N'GUESSAN D substitution in			
06:41	2 PERRY T substitution in			
06:41	13 MCNAIR JR. W substitution in			
06:41				21 KNELL T substitution out
06:41				30 HALL D substitution out
06:41				15 SAUNDERS R substitution in



BYU at Kansas St.

02/24/24 Bramlage Coliseum, Manhattan
2023-24 Men's Basketball

Game Time: 1:01 PM
Game Duration: 2:16
Attendance: 9,117

Officials: Kelly Self, Rick Crawford, Amy Bonner

Game Time	KState	Score	Diff	BYU
06:41				20 JOHNSON S substitution in
06:21	2 PERRY T 3pt FG , jump shot missed			
06:16				15 SAUNDERS R defensive rebound (5)
05:53				0 WATERMAN N 2pt FG in the paint, driving layup missed
05:51	5 CARTER C defensive rebound (4)			
05:45	1 N'GUESSAN D 2pt FG fast break in the paint, driving layup made (10)	71-58	13	
05:45	5 CARTER C assist (2)			
05:31		71-60	11	2 ROBINSON J 2pt FG outside the paint, pull up jump shot made (13)
05:08	13 MCNAIR JR. W 2pt FG in the paint, hook shot made (8)	73-60	13	
05:08	5 CARTER C assist (3)			
04:52	2 PERRY T foul drawn (4)			2 ROBINSON J foul offensive (4 - 11)
04:52				2 ROBINSON J turnover offensive (2)
04:52	Timeout media			
04:52				2 ROBINSON J substitution out
04:52				30 HALL D substitution in
04:49	24 KALUMA A turnover bad pass (1)			15 SAUNDERS R steal (2)
04:44		73-63	10	20 JOHNSON S 3pt FG fast break from turnover, jump shot made (12)
04:44				15 SAUNDERS R assist (2)
04:24	24 KALUMA A 2pt FG in the paint, layup made (27)	75-63	12	
04:24	13 MCNAIR JR. W assist (2)			
04:10		75-65	10	4 ALLY ATIKI A 2pt FG in the paint, layup made (6)
04:10				30 HALL D assist (6)
03:52	24 KALUMA A turnover lost ball (2)			30 HALL D steal (2)
03:45				20 JOHNSON S 3pt FG from turnover, jump shot missed
03:41	24 KALUMA A defensive rebound (10)			
03:12	2 PERRY T 2pt FG outside the paint, step back jump shot missed			
03:10				20 JOHNSON S defensive rebound (4)
02:51		75-67	8	15 SAUNDERS R 2pt FG outside the paint, turnaround jump shot made (7)
02:21	24 KALUMA A foul drawn (7)			0 WATERMAN N foul shooting (3 - 12)
02:21	Timeout media			
02:21				30 HALL D substitution out
02:21				2 ROBINSON J substitution in
02:21	24 KALUMA A free throw 1 - 2 made (28)	76-67	9	
02:21	24 KALUMA A free throw 2 - 2 missed			
02:19				15 SAUNDERS R defensive rebound (6)
01:55				2 ROBINSON J 3pt FG , pull up jump shot missed
01:52				0 WATERMAN N offensive rebound (7)
01:51				0 WATERMAN N 3pt FG second chance, jump shot missed
01:51	defensive rebound (31)			
01:49	13 MCNAIR JR. W foul drawn (2)			0 WATERMAN N foul personal (4 - 13)
01:49	13 MCNAIR JR. W free throw 1 - 2 missed			
01:49	offensive dead ball rebound (3)			
01:49				15 SAUNDERS R substitution out
01:49				30 HALL D substitution in
01:49	13 MCNAIR JR. W free throw 2 - 2 made (9)	77-67	10	
01:43	5 CARTER C foul personal (4 - 8)			30 HALL D foul drawn (2)



BYU at Kansas St.

02/24/24 Bramlage Coliseum, Manhattan
2023-24 Men's Basketball

Game Time: 1:01 PM
Game Duration: 2:16
Attendance: 9,117

Officials: Kelly Self, Rick Crawford, Amy Bonner

Game Time	KState	Score	Diff	BYU
01:43				4 ALLY ATIKI A substitution out
01:43				15 SAUNDERS R substitution in
01:43		77-68	9	30 HALL D 1&1 free throw 1 made (3)
01:43				30 HALL D 1&1 free throw 2 missed
01:41	1 N'GUESSAN D defensive rebound (4)			
01:15	13 MCNAIR JR. W 2pt FG in the paint, hook shot made (11)	79-68	11	
01:15	2 PERRY T assist (5)			
01:06		79-70	9	15 SAUNDERS R 2pt FG in the paint, driving layup made (9)
00:51	1 N'GUESSAN D 2pt FG fast break in the paint, dunk, made (12)	81-70	11	
00:51	24 KALUMA A assist (3)			
00:44		81-72	9	2 ROBINSON J 2pt FG in the paint, floating jump shot made (15)
00:44				30 HALL D assist (7)
00:43	1 N'GUESSAN D substitution out			
00:43	13 MCNAIR JR. W substitution out			
00:43	4 AMES D substitution in			
00:43	8 JONES R substitution in			
00:43				0 WATERMAN N substitution out
00:43				21 KNELL T substitution in
00:37	4 AMES D turnover bad pass (2)			15 SAUNDERS R steal (3)
00:35				2 ROBINSON J 2pt FG from turnover outside the paint, jump shot missed
00:35				offensive rebound (36)
00:35	4 AMES D substitution out			
00:35	8 JONES R substitution out			
00:35	1 N'GUESSAN D substitution in			
00:35	13 MCNAIR JR. W substitution in			
00:33		81-74	7	15 SAUNDERS R 2pt FG from turnover second chance in the paint, layup made (11)
00:33				30 HALL D assist (8)
00:30	Timeout 30 Sec			
00:28	5 CARTER C 2pt FG fast break in the paint, driving layup made (12)	83-74	9	
00:28	24 KALUMA A assist (4)			
00:20				21 KNELL T 2pt FG in the paint, floating jump shot missed
00:15				21 KNELL T offensive rebound (2)
00:15				21 KNELL T 2pt FG second chance in the paint, layup missed
00:15				20 JOHNSON S offensive rebound (5)
00:14				20 JOHNSON S 3pt FG second chance, jump shot missed
00:11	1 N'GUESSAN D defensive rebound (5)			
00:07	Timeout 60 Sec			
00:03	2 PERRY T foul drawn (5)			15 SAUNDERS R foul personal (4 - 14)
00:03	2 PERRY T free throw 1 - 2 missed			
00:03	offensive dead ball rebound (4)			
00:03	2 PERRY T free throw 2 - 2 made (16)	84-74	10	
END OF GAME				
KState 84-74 BYU				



BYU at Kansas St.

02/24/24 Bramlage Coliseum, Manhattan
2023-24 Men's Basketball

Game Time: 1:01 PM
Game Duration: 2:16
Attendance: 9,117

Officials: Kelly Self, Rick Crawford, Amy Bonner

BYU - 36

NO.	Name	F/C	Min	FG	3P	FT	Rebounds			Fouls		TP	AS	TO	ST	Blocks		+/-
				M-A	M-A	M-A	OR	DR	TOT	PF	FD					BS	BA	
0	Noah Waterman	F	15:52	2-5	1-2	0-2	2	4	6	3	1	5	0	1	1	0	1	-1
50	Aly Khalifa	C	04:41	1-2	0-1	1-2	0	0	0	1	1	3	0	0	0	1	0	-2
20	Spencer Johnson	G	15:03	1-4	1-4	0-0	3	1	4	0	2	3	1	0	0	0	0	-7
21	Trevin Knell	G	09:43	0-3	0-1	0-0	1	1	2	2	0	0	0	0	0	0	0	-2
30	Dallin Hall	G	14:09	1-6	0-3	1-3	1	0	1	1	2	3	6	1	2	0	0	4
45	Fousseyni Traore		03:41	0-1	0-0	2-2	1	0	1	2	1	2	0	0	0	0	0	-6
2	Jaxson Robinson		13:27	3-9	0-4	0-1	0	1	1	2	1	6	0	2	0	0	0	-9
15	Richie Saunders		11:42	4-5	0-0	0-0	1	3	4	2	0	8	1	0	2	0	0	-5
1	Trey Stewart		01:47	0-0	0-0	0-0	0	0	0	0	0	0	0	0	0	0	0	-4
4	Atiki Ally Atiki		09:55	3-5	0-0	0-0	3	0	3	1	0	6	0	0	0	0	0	2
Team							2	1	3			0			0			
Totals				15-40	2-15	4-10	14	11	25	14	8	36	8	4	5	1	1	-6

Shooting By Period		
2 nd FG%	15-40	37.5%
3PT%	2-15	13.3%
FT%	4-10	40%
GM FG%	15-40	37.5%
3PT%	2-15	13.3%
FT%	4-10	40.0%

Dead Ball Rebounds: 2, 0

Technical Fouls::NONE

Kansas St. - 42

NO.	Name	F/C	Min	FG	3P	FT	Rebounds			Fouls		TP	AS	TO	ST	Blocks		+/-
				M-A	M-A	M-A	OR	DR	TOT	PF	FD					BS	BA	
24	Arthur Kaluma	F	20:00	4-5	0-0	4-6	0	4	4	1	4	12	3	2	1	0	0	6
20	Jerrell Colbert	C	07:14	0-0	0-0	0-2	0	2	2	1	1	0	1	0	1	1	0	0
2	Tylor Perry	G	17:47	1-4	1-3	3-4	0	3	3	2	3	6	3	0	0	0	0	11
4	Dai Dai Ames	G	08:13	0-0	0-0	0-0	0	0	0	1	0	0	1	2	0	0	0	-1
5	Cam Carter	G	17:56	2-4	0-2	4-4	0	2	2	2	3	8	2	1	0	0	0	4
13	Will McNair Jr.		12:38	2-2	0-0	3-4	0	1	1	0	2	7	1	0	0	0	0	6
1	David N'Guessan		11:07	4-5	0-0	1-2	0	2	2	1	1	9	0	1	0	0	1	5
8	RJ Jones		05:05	0-0	0-0	0-0	0	0	0	0	0	0	0	0	0	0	0	-1
Team							0	1	1			0			0			
Totals				13-20	1-5	15-22	0	15	15	8	14	42	11	6	2	1	1	6

Shooting By Period		
2 nd FG%	13-20	65.0%
3PT%	1-5	20.0%
FT%	15-22	68.2%
GM FG%	13-20	65.0%
3PT%	1-5	20.0%
FT%	15-22	68.2%

Dead Ball Rebounds: 3, 0

Technical Fouls::NONE

	BYU	KState
Biggest lead	0 (1 st 20:00)	16 (2 nd 11:00)
Best Scoring Run	5(2 nd 6:47)	6(2 nd 12:47)
Lead Changes	0	
Times Tied	0	
Time with Lead	00:00	19:31

Points from	BYU	KState
Turnovers	9	4
Paint	22	20
Second Chance	10	0
Fast Breaks	5	8
Bench	22	16

	Period by Period Scoring		
	1st	2nd	TOT
BYU	38	36	74
KState	42	42	84



BYU at Kansas St.

02/24/24 Bramlage Coliseum, Manhattan
2023-24 Men's Basketball

Game Time: 1:01 PM
Game Duration: 2:16
Attendance: 9,117

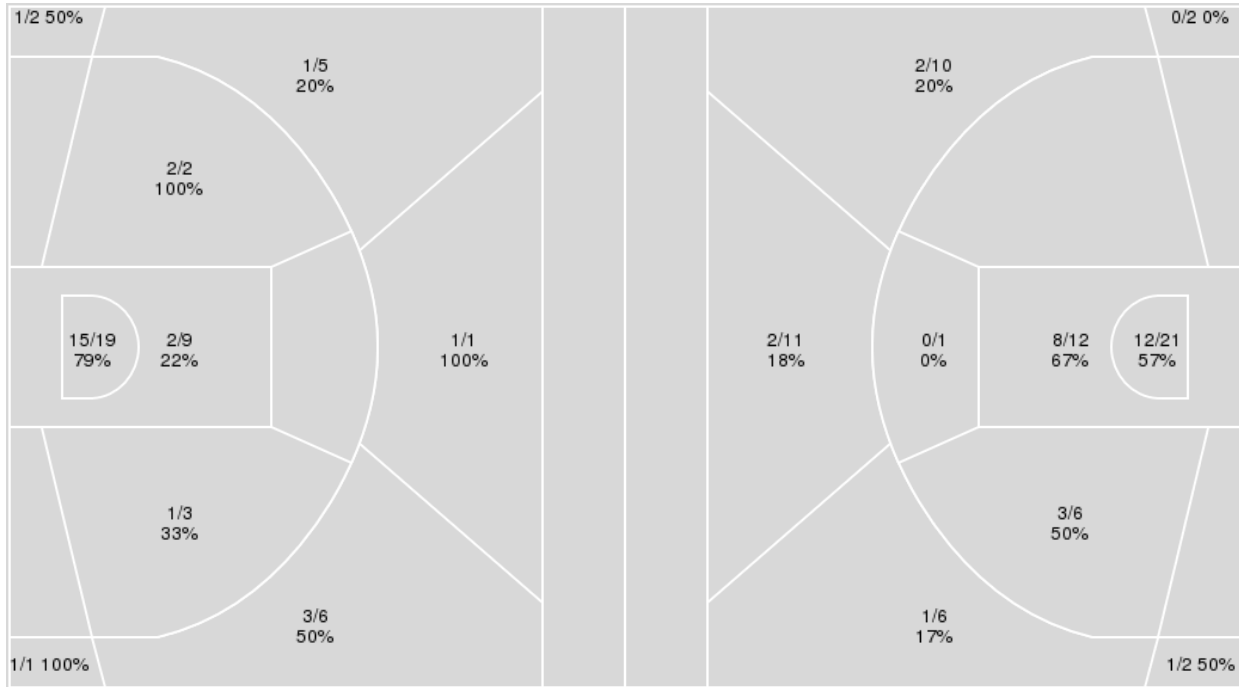
Officials: Kelly Self, Rick Crawford, Amy Bonner

{ Players => 0, 1, 2, 3, 4, 5, 8, 10, 13, 15, 20, 23, 24; } FG Types => All;
Results => All;

{ Players => 0, 1, 2, 4, 10, 12, 15, 20, 21, 23, 24, 25, 30, 45, 50, 51; }
FG Types => All; Results => All;

Kansas St.

BYU



Kansas St.	M/A	%
Field Goals	27/48	56
2 Points	20/33	61
3 Points	7/15	47
Free Throws	23/31	74

BYU	M/A	%
Field Goals	29/71	41
2 Points	23/40	57
3 Points	6/31	19
Free Throws	10/16	62



BYU at Kansas St.

02/24/24 Bramlage Coliseum, Manhattan
2023-24 Men's Basketball

Game Time: 1:01 PM
Game Duration: 2:16
Attendance: 9,117

Officials: Kelly Self, Rick Crawford, Amy Bonner

BYU

No	Name	Mins		Score		Points Diff		Points per Min		Assists		Rebounds		Steals		Turnovers	
		On	Off	On	Off	On	Off	On	Off	On	Off	On	Off	On	Off	On	Off
0	Noah Waterman	30:09	09:51	60 - 62	14 - 22	-2	-8	1.99	1.42	13	6	26	12	6	2	6	2
1	Trey Stewart	04:08	35:52	2 - 8	72 - 76	-6	-4	0.48	2.01	1	18	5	33	0	8	1	7
2	Jaxson Robinson	23:00	16:60	47 - 52	27 - 32	-5	-5	2.04	1.59	11	8	28	10	5	3	3	5
4	Atiki Ally Atiki	09:55	30:05	18 - 16	56 - 68	2	-12	1.82	1.86	4	15	13	25	3	5	1	7
15	Richie Saunders	20:35	19:25	37 - 42	37 - 42	-5	-5	1.80	1.91	11	8	22	16	5	3	4	4
20	Spencer Johnson	30:00	10:00	51 - 68	23 - 16	-17	7	1.70	2.30	14	5	24	14	6	2	6	2
21	Trevin Knell	22:03	17:57	39 - 46	35 - 38	-7	-3	1.77	1.95	10	9	21	17	3	5	6	2
30	Dallin Hall	31:48	08:12	67 - 65	7 - 19	2	-12	2.11	0.85	18	1	29	9	8	0	6	2
45	Fousseyni Traore	11:47	28:13	26 - 24	48 - 60	2	-12	2.21	1.70	4	15	11	27	2	6	1	7
50	Aly Khalifa	16:35	23:25	23 - 37	51 - 47	-14	4	1.39	2.18	9	10	11	27	2	6	6	2

Kansas St.

No	Name	Mins		Score		Points Diff		Points per Min		Assists		Rebounds		Steals		Turnovers	
		On	Off	On	Off	On	Off	On	Off	On	Off	On	Off	On	Off	On	Off
1	David N'Guessan	24:03	15:57	53 - 52	31 - 22	1	9	2.20	1.94	14	6	23	10	3	2	9	4
2	Tylor Perry	36:29	03:31	78 - 65	6 - 9	13	-3	2.14	1.71	20	0	30	3	5	0	11	2
4	Dai Dai Ames	23:16	16:44	49 - 37	35 - 37	12	-2	2.11	2.09	11	9	17	16	4	1	7	6
5	Cam Carter	32:29	07:31	64 - 59	20 - 15	5	5	1.97	2.66	15	5	26	7	4	1	11	2
8	RJ Jones	05:05	34:55	8 - 9	76 - 65	-1	11	1.57	2.18	0	20	4	29	0	5	2	11
13	Will McNair Jr.	19:52	20:08	42 - 39	42 - 35	3	7	2.11	2.09	12	8	16	17	2	3	7	6
20	Jerrell Colbert	19:38	20:22	42 - 35	42 - 39	7	3	2.14	2.06	8	12	17	16	3	2	5	8
24	Arthur Kaluma	39:08	00:52	84 - 74	0 - 0	10	0	2.15	0.00	20	0	32	1	4	1	13	0

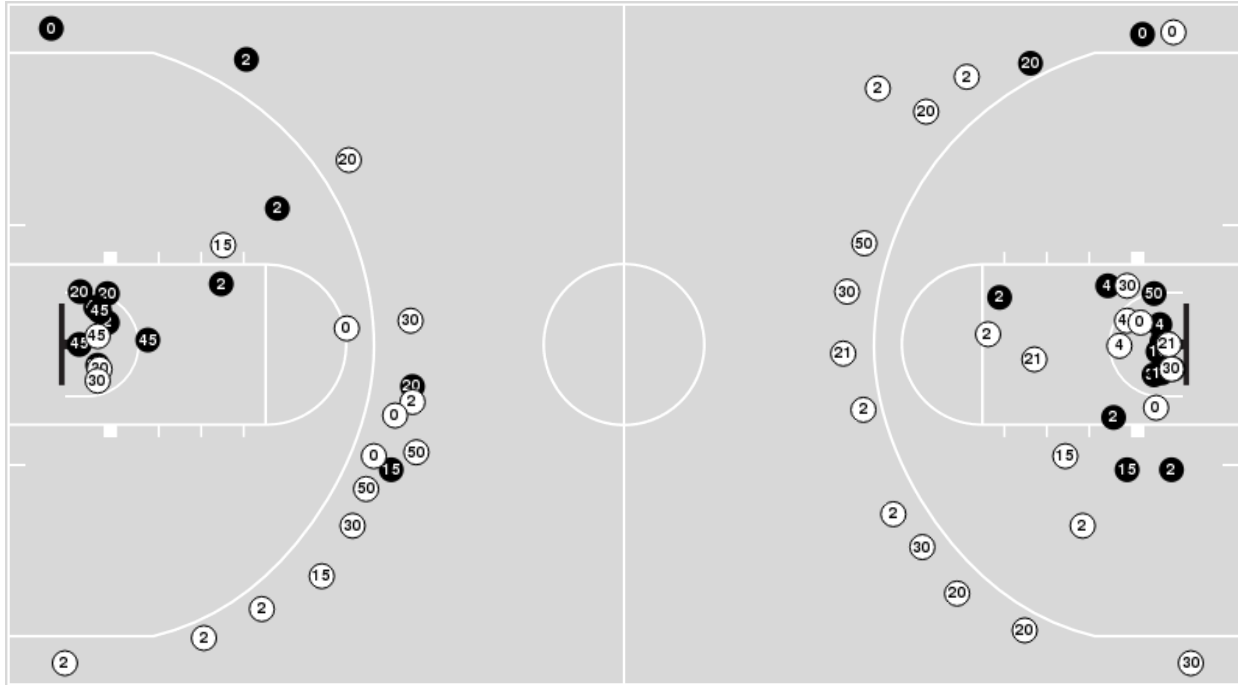


Officials: Kelly Self, Rick Crawford, Amy Bonner

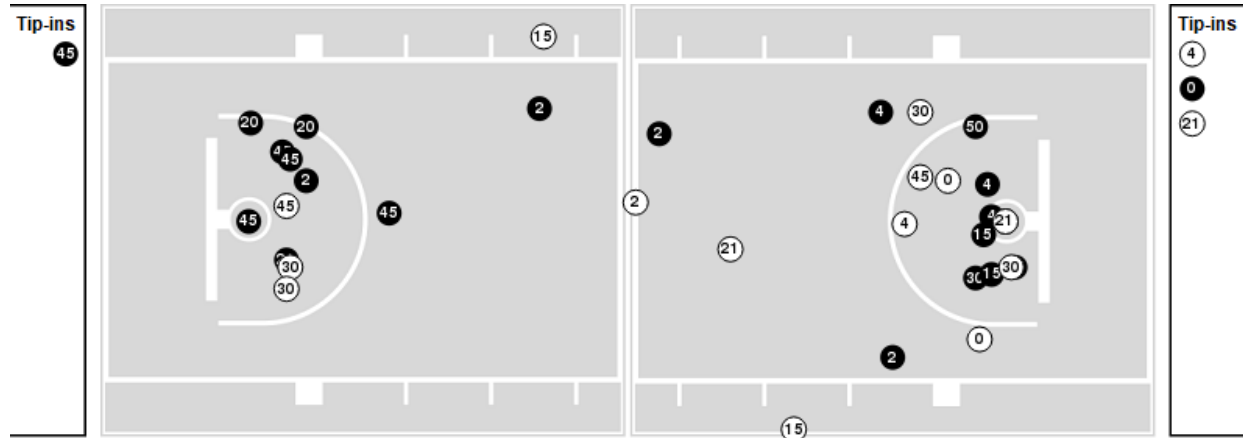
Players => 0, 1, 2, 4, 10, 12, 15, 20, 21, 23, 24, 25, 30, 45, 50, 51 FG Types=>All Results=>All

BYU

All Field Goals



Blow Up Chart



● Made ○ Missed N - Player Number

BYU	M/A	%
Field Goals	29/71	41
2 Points	23/40	57
3 Points	6/31	19
Free Throws	10/16	62

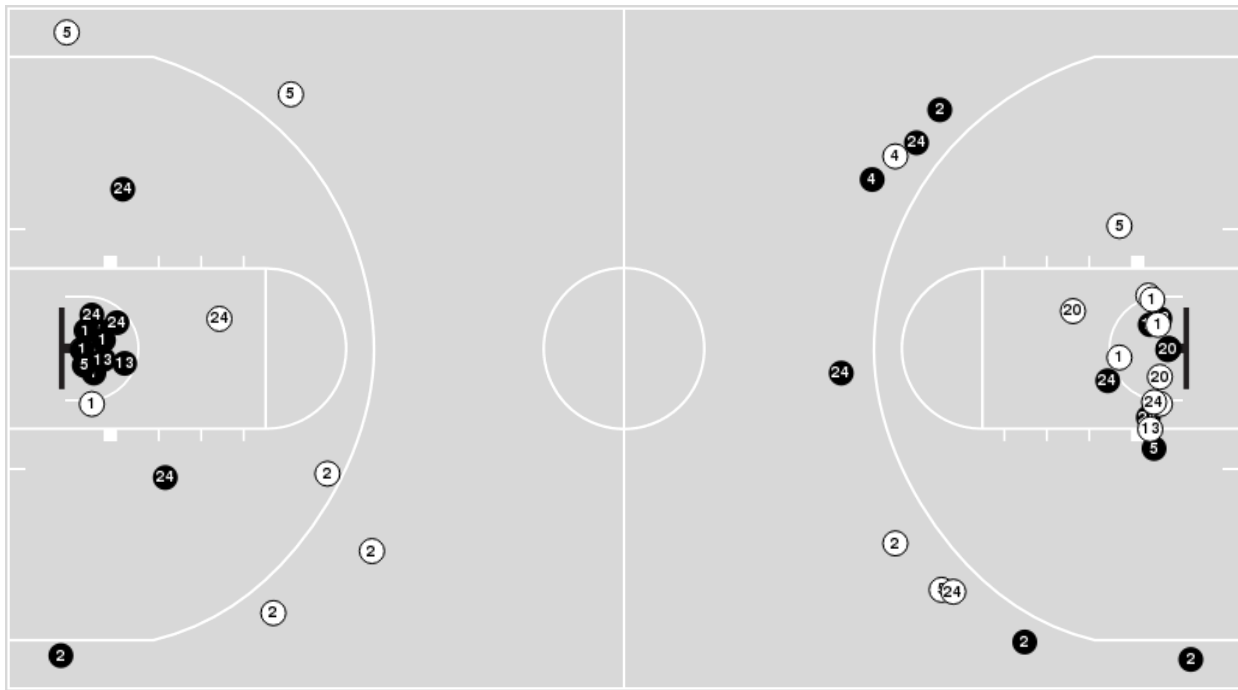
BYU	M/A	%
Points in the Paint	40 (20 / 33)	61
Fast Break Points	5 (2/2)	100
Second Chance Points	14 (8/20)	40
Effective FG%	45	



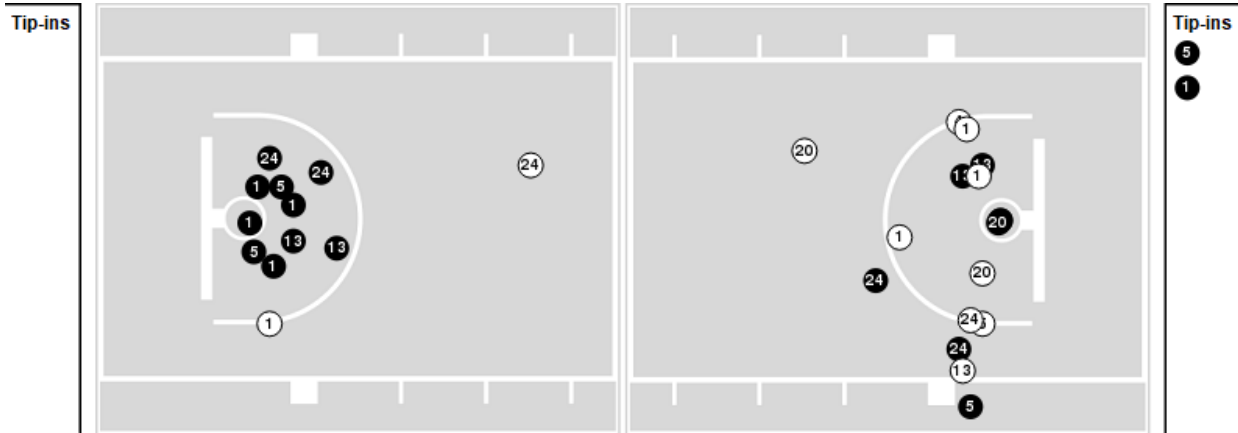
Players => 0, 1, 2, 3, 4, 5, 8, 10, 13, 15, 20, 23, 24 FG Types=>All Results=>All

Kansas St.

All Field Goals



Blow Up Chart



N Made **O** Missed N - Player Number

Kansas St.	M/A	%
Field Goals	27/48	56
2 Points	20/33	61
3 Points	7/15	47
Free Throws	23/31	74

Kansas St.	M/A	%
Points in the Paint	34 (17 / 28)	61
Fast Break Points	12 (8/8)	100
Second Chance Points	10 (5/6)	83
Effective FG%	64	



BYU at Kansas St.

02/24/24 Bramlage Coliseum, Manhattan
2023-24 Men's Basketball

Game Time: 1:01 PM
Game Duration: 2:16
Attendance: 9,117

Officials: Kelly Self, Rick Crawford, Amy Bonner

BYU

Lineup	Quarter On	Time On	Quarter Off	Time Off	Time on Court	Score	Score Diff	Reb	Stl	Tov	Ass	PPP
0- Waterman N/ 20- Johnson S/ 21- Knell T/ 30- Hall D/ 50- Khalifa A/	1	20:00	1	16:39	03:21	2-12	-10	0	0	1	1	0.4000
0- Waterman N/ 2- Robinson J/ 21- Knell T/ 30- Hall D/ 45- Traore F/	1	16:39	1	14:25	02:14	8-4	4	2	1	1	1	1.8519
0- Waterman N/ 15- Saunders R/ 21- Knell T/ 30- Hall D/ 45- Traore F/	1	14:25	1	13:57	00:28	4-0	4	1	0	0	1	2.7778
0- Waterman N/ 1- Stewart T/ 15- Saunders R/ 21- Knell T/ 45- Traore F/	1	13:57	1	13:35	00:22	0-0	0	1	0	0	0	0.0000
0- Waterman N/ 1- Stewart T/ 15- Saunders R/ 21- Knell T/ 50- Khalifa A/	1	13:35	1	12:43	00:52	0-0	0	1	0	1	0	0.0000
1- Stewart T/ 2- Robinson J/ 15- Saunders R/ 21- Knell T/ 50- Khalifa A/	1	12:43	1	11:36	01:07	2-4	-2	0	0	0	1	1.0000
2- Robinson J/ 15- Saunders R/ 20- Johnson S/ 30- Hall D/ 50- Khalifa A/	1	11:36	1	10:18	01:18	2-4	-2	0	0	0	1	0.6667
0- Waterman N/ 2- Robinson J/ 20- Johnson S/ 30- Hall D/ 50- Khalifa A/	1	10:18	1	09:26	00:52	2-0	2	1	0	0	1	2.0000
0- Waterman N/ 2- Robinson J/ 20- Johnson S/ 30- Hall D/ 45- Traore F/	1	09:26	1	07:18	02:08	4-4	0	3	1	0	1	1.3333
0- Waterman N/ 20- Johnson S/ 21- Knell T/ 30- Hall D/ 45- Traore F/	1	07:18	1	05:09	02:09	4-5	-1	0	0	0	1	1.3889
0- Waterman N/ 15- Saunders R/ 20- Johnson S/ 30- Hall D/ 50- Khalifa A/	1	05:09	1	04:03	01:06	2-3	-1	1	1	0	1	1.0000
2- Robinson J/ 15- Saunders R/ 20- Johnson S/ 30- Hall D/ 50- Khalifa A/	1	04:03	1	02:32	01:31	3-2	1	1	0	0	1	1.0000
15- Saunders R/ 20- Johnson S/ 21- Knell T/ 30- Hall D/ 50- Khalifa A/	1	02:32	1	00:45	01:46	3-3	0	1	0	1	1	1.0000
0- Waterman N/ 2- Robinson J/ 20- Johnson S/ 30- Hall D/ 50- Khalifa A/	1	00:45	1	00:45	00:00	0-0	0	0	0	0	0	0.0000
0- Waterman N/ 2- Robinson J/ 20- Johnson S/ 30- Hall D/ 45- Traore F/	1	00:45	1	00:21	00:23	2-1	1	0	0	0	0	2.0000
0- Waterman N/ 15- Saunders R/ 20- Johnson S/ 30- Hall D/ 45- Traore F/	1	00:21	2	20:00	00:21	0-0	0	1	0	0	0	0.0000
0- Waterman N/ 20- Johnson S/ 21- Knell T/ 30- Hall D/ 50- Khalifa A/	2	20:00	2	16:56	03:04	5-7	-2	2	0	2	1	1.0246
0- Waterman N/ 20- Johnson S/ 21- Knell T/ 30- Hall D/ 45- Traore F/	2	16:56	2	15:58	00:58	0-0	0	1	0	0	0	0.0000
0- Waterman N/ 2- Robinson J/ 20- Johnson S/ 30- Hall D/ 45- Traore F/	2	15:58	2	14:58	01:00	1-4	-3	1	0	0	0	0.6944
0- Waterman N/ 2- Robinson J/ 15- Saunders R/ 20- Johnson S/ 45- Traore F/	2	14:58	2	13:15	01:43	3-6	-3	1	0	0	0	1.0870
2- Robinson J/ 15- Saunders R/ 20- Johnson S/ 30- Hall D/ 50- Khalifa A/	2	13:15	2	11:38	01:37	2-2	0	4	1	1	1	0.5814
1- Stewart T/ 2- Robinson J/ 4- Ally Atiki A/ 15- Saunders R/ 21- Knell T/	2	11:38	2	09:51	01:47	0-4	-4	3	0	0	0	0.0000
0- Waterman N/ 2- Robinson J/ 4- Ally Atiki A/ 21- Knell T/ 30- Hall D/	2	09:51	2	06:41	03:10	9-4	5	6	1	0	2	1.5000
0- Waterman N/ 2- Robinson J/ 4- Ally Atiki A/ 15- Saunders R/ 20- Johnson S/	2	06:41	2	04:52	01:49	2-4	-2	1	0	1	0	0.6667
0- Waterman N/ 4- Ally Atiki A/ 15- Saunders R/ 20- Johnson S/ 30- Hall D/	2	04:52	2	02:21	02:31	7-2	5	1	2	0	2	1.7500
0- Waterman N/ 2- Robinson J/ 4- Ally Atiki A/ 15- Saunders R/ 20- Johnson S/	2	02:21	2	01:49	00:32	0-1	-1	2	0	0	0	0.0000
0- Waterman N/ 2- Robinson J/ 4- Ally Atiki A/ 20- Johnson S/ 30- Hall D/	2	01:49	2	01:43	00:06	0-1	-1	0	0	0	0	0.0000
0- Waterman N/ 2- Robinson J/ 15- Saunders R/ 20- Johnson S/ 30- Hall D/	2	01:43	2	00:43	00:59	5-4	1	0	0	0	1	1.7361
2- Robinson J/ 15- Saunders R/ 20- Johnson S/ 21- Knell T/ 30- Hall D/	2	00:43	2	00:00	00:43	2-3	-1	3	1	0	1	1.0000



BYU at Kansas St.

02/24/24 Bramlage Coliseum, Manhattan
2023-24 Men's Basketball

Game Time: 1:01 PM
Game Duration: 2:16
Attendance: 9,117

Officials: Kelly Self, Rick Crawford, Amy Bonner

Kansas St.

Lineup	Quarter On	Time On	Quarter Off	Time Off	Time on Court	Score	Score Diff	Reb	Stl	Tov	Ass	PPP
2- Perry T/ 4- Ames D/ 5- Carter C/ 20- Colbert J/ 24- Kaluma A/	1	20:00	1	16:34	03:26	12-2	10	5	1	0	2	2.4590
2- Perry T/ 4- Ames D/ 5- Carter C/ 13- McNair Jr. W/ 24- Kaluma A/	1	16:34	1	15:56	00:38	0-0	0	0	0	0	0	0.0000
1- N'Guessan D/ 2- Perry T/ 5- Carter C/ 13- McNair Jr. W/ 24- Kaluma A/	1	15:56	1	14:25	01:31	4-8	-4	0	0	1	1	1.1628
1- N'Guessan D/ 2- Perry T/ 5- Carter C/ 20- Colbert J/ 24- Kaluma A/	1	14:25	1	13:35	00:50	0-4	-4	0	0	0	0	0.0000
1- N'Guessan D/ 2- Perry T/ 4- Ames D/ 5- Carter C/ 20- Colbert J/	1	13:35	1	12:43	00:52	0-0	0	1	1	0	0	0.0000
1- N'Guessan D/ 2- Perry T/ 4- Ames D/ 20- Colbert J/ 24- Kaluma A/	1	12:43	1	11:36	01:07	4-2	2	1	0	1	1	1.6393
1- N'Guessan D/ 4- Ames D/ 5- Carter C/ 20- Colbert J/ 24- Kaluma A/	1	11:36	1	10:18	01:18	4-2	2	2	0	1	0	1.3333
2- Perry T/ 4- Ames D/ 5- Carter C/ 20- Colbert J/ 24- Kaluma A/	1	10:18	1	09:26	00:52	0-2	-2	0	0	0	0	0.0000
2- Perry T/ 4- Ames D/ 5- Carter C/ 13- McNair Jr. W/ 24- Kaluma A/	1	09:26	1	07:18	02:08	4-4	0	1	0	1	2	1.3333
1- N'Guessan D/ 2- Perry T/ 5- Carter C/ 13- McNair Jr. W/ 24- Kaluma A/	1	07:18	1	06:46	00:32	0-2	-2	1	0	1	0	0.0000
1- N'Guessan D/ 2- Perry T/ 4- Ames D/ 13- McNair Jr. W/ 24- Kaluma A/	1	06:46	1	05:09	01:37	5-2	3	2	0	0	1	2.5000
1- N'Guessan D/ 2- Perry T/ 4- Ames D/ 20- Colbert J/ 24- Kaluma A/	1	05:09	1	03:14	01:55	3-5	-2	2	0	1	1	1.0000
1- N'Guessan D/ 2- Perry T/ 5- Carter C/ 20- Colbert J/ 24- Kaluma A/	1	03:14	1	01:10	02:04	4-3	1	3	0	1	1	1.0309
1- N'Guessan D/ 2- Perry T/ 4- Ames D/ 13- McNair Jr. W/ 24- Kaluma A/	1	01:10	1	00:21	00:48	2-2	0	0	1	0	0	2.2727
1- N'Guessan D/ 2- Perry T/ 4- Ames D/ 5- Carter C/ 24- Kaluma A/	1	00:21	2	20:00	00:21	0-0	0	0	0	0	0	0.0000
2- Perry T/ 4- Ames D/ 5- Carter C/ 20- Colbert J/ 24- Kaluma A/	2	20:00	2	16:56	03:04	7-5	2	0	1	0	2	1.3158
2- Perry T/ 4- Ames D/ 5- Carter C/ 13- McNair Jr. W/ 24- Kaluma A/	2	16:56	2	16:12	00:44	0-0	0	0	0	1	0	0.0000
1- N'Guessan D/ 2- Perry T/ 4- Ames D/ 13- McNair Jr. W/ 24- Kaluma A/	2	16:12	2	15:58	00:14	0-0	0	1	0	0	0	0.0000
1- N'Guessan D/ 2- Perry T/ 4- Ames D/ 20- Colbert J/ 24- Kaluma A/	2	15:58	2	14:58	01:00	4-1	3	1	0	0	1	2.1277
1- N'Guessan D/ 2- Perry T/ 4- Ames D/ 13- McNair Jr. W/ 24- Kaluma A/	2	14:58	2	14:08	00:50	2-3	-1	0	0	0	1	2.0000
1- N'Guessan D/ 2- Perry T/ 5- Carter C/ 13- McNair Jr. W/ 24- Kaluma A/	2	14:08	2	11:38	02:30	6-2	4	4	1	1	1	1.2605
2- Perry T/ 5- Carter C/ 8- Jones R/ 13- McNair Jr. W/ 24- Kaluma A/	2	11:38	2	09:51	01:47	4-0	4	2	0	0	0	1.4493
2- Perry T/ 5- Carter C/ 8- Jones R/ 20- Colbert J/ 24- Kaluma A/	2	09:51	2	08:54	00:57	2-2	0	1	0	0	0	1.0638
4- Ames D/ 5- Carter C/ 8- Jones R/ 20- Colbert J/ 24- Kaluma A/	2	08:54	2	06:41	02:13	2-7	-5	1	0	1	0	0.5814
1- N'Guessan D/ 2- Perry T/ 5- Carter C/ 13- McNair Jr. W/ 24- Kaluma A/	2	06:41	2	00:43	05:57	12-14	-2	4	0	2	5	1.1152
2- Perry T/ 4- Ames D/ 5- Carter C/ 8- Jones R/ 24- Kaluma A/	2	00:43	2	00:35	00:07	0-0	0	0	0	1	0	0.0000
1- N'Guessan D/ 2- Perry T/ 5- Carter C/ 13- McNair Jr. W/ 24- Kaluma A/	2	00:35	2	00:00	00:35	3-2	1	1	0	0	1	1.5957



BYU at Kansas St.

02/24/24 Bramlage Coliseum, Manhattan
2023-24 Men's Basketball

Game Time: 1:01 PM
Game Duration: 2:16
Attendance: 9,117

Officials: Kelly Self, Rick Crawford, Amy Bonner

BYU

Lineup	Time	Score	Score Diff	Pts/Min	Reb	Stl	Tov	Ass	PPP
0- Waterman N/ 20- Johnson S/ 21- Knell T/ 30- Hall D/ 50- Khalifa A/	06:25	7-19	-12	1.0909	2	0	3	2	0.7085
2- Robinson J/ 15- Saunders R/ 20- Johnson S/ 30- Hall D/ 50- Khalifa A/	04:26	7-8	-1	1.5789	5	1	1	3	0.7415
0- Waterman N/ 2- Robinson J/ 20- Johnson S/ 30- Hall D/ 45- Traore F/	03:31	7-9	-2	1.9877	4	1	0	1	1.2868
0- Waterman N/ 2- Robinson J/ 4- Ally Atiki A/ 21- Knell T/ 30- Hall D/	03:10	9-4	5	2.8421	6	1	0	2	1.5000
0- Waterman N/ 20- Johnson S/ 21- Knell T/ 30- Hall D/ 45- Traore F/	03:07	4-5	-1	1.2834	1	0	0	1	1.0309
0- Waterman N/ 4- Ally Atiki A/ 15- Saunders R/ 20- Johnson S/ 30- Hall D/	02:31	7-2	5	2.7815	1	2	0	2	1.7500
0- Waterman N/ 2- Robinson J/ 4- Ally Atiki A/ 15- Saunders R/ 20- Johnson S/	02:21	2-5	-3	0.8511	3	0	1	0	0.5000
0- Waterman N/ 2- Robinson J/ 21- Knell T/ 30- Hall D/ 45- Traore F/	02:14	8-4	4	3.5821	2	1	1	1	1.8519
1- Stewart T/ 2- Robinson J/ 4- Ally Atiki A/ 15- Saunders R/ 21- Knell T/	01:47	0-4	-4	0.0000	3	0	0	0	0.0000
15- Saunders R/ 20- Johnson S/ 21- Knell T/ 30- Hall D/ 50- Khalifa A/	01:46	3-3	0	1.6838	1	0	1	1	1.0000
0- Waterman N/ 2- Robinson J/ 15- Saunders R/ 20- Johnson S/ 45- Traore F/	01:43	3-6	-3	1.7476	1	0	0	0	1.0870
1- Stewart T/ 2- Robinson J/ 15- Saunders R/ 21- Knell T/ 50- Khalifa A/	01:07	2-4	-2	1.7910	0	0	0	1	1.0000
0- Waterman N/ 15- Saunders R/ 20- Johnson S/ 30- Hall D/ 50- Khalifa A/	01:06	2-3	-1	1.8182	1	1	0	1	1.0000
0- Waterman N/ 2- Robinson J/ 15- Saunders R/ 20- Johnson S/ 30- Hall D/	00:59	5-4	1	5.0590	0	0	0	1	1.7361
0- Waterman N/ 1- Stewart T/ 15- Saunders R/ 21- Knell T/ 50- Khalifa A/	00:52	0-0	0	0.0000	1	0	1	0	0.0000
0- Waterman N/ 2- Robinson J/ 20- Johnson S/ 30- Hall D/ 50- Khalifa A/	00:52	2-0	2	2.3077	1	0	0	1	2.0000
2- Robinson J/ 15- Saunders R/ 20- Johnson S/ 21- Knell T/ 30- Hall D/	00:43	2-3	-1	2.7460	3	1	0	1	1.0000
0- Waterman N/ 15- Saunders R/ 21- Knell T/ 30- Hall D/ 45- Traore F/	00:28	4-0	4	8.5714	1	0	0	1	2.7778
0- Waterman N/ 1- Stewart T/ 15- Saunders R/ 21- Knell T/ 45- Traore F/	00:22	0-0	0	0.0000	1	0	0	0	0.0000
0- Waterman N/ 15- Saunders R/ 20- Johnson S/ 30- Hall D/ 45- Traore F/	00:21	0-0	0	0.0000	1	0	0	0	0.0000
0- Waterman N/ 2- Robinson J/ 4- Ally Atiki A/ 20- Johnson S/ 30- Hall D/	00:06	0-1	-1	0.0000	0	0	0	0	0.0000



BYU at Kansas St.

02/24/24 Bramlage Coliseum, Manhattan
2023-24 Men's Basketball

Game Time: 1:01 PM
Game Duration: 2:16
Attendance: 9,117

Officials: Kelly Self, Rick Crawford, Amy Bonner

Kansas St.

Lineup	Time	Score	Score Diff	Pts/Min	Reb	Stl	Tov	Ass	PPP
1- N'Guessan D/ 2- Perry T/ 5- Carter C/ 13- McNair Jr. W/ 24- Kaluma A/	11:06	25-28	-3	2.2519	10	1	5	8	1.1447
2- Perry T/ 4- Ames D/ 5- Carter C/ 20- Colbert J/ 24- Kaluma A/	07:22	19-9	10	2.5792	5	2	0	4	1.6964
1- N'Guessan D/ 2- Perry T/ 4- Ames D/ 20- Colbert J/ 24- Kaluma A/	04:02	11-8	3	2.7273	4	0	2	3	1.5027
2- Perry T/ 4- Ames D/ 5- Carter C/ 13- McNair Jr. W/ 24- Kaluma A/	03:30	4-4	0	1.1429	1	0	2	2	0.8000
1- N'Guessan D/ 2- Perry T/ 4- Ames D/ 13- McNair Jr. W/ 24- Kaluma A/	03:29	9-7	2	2.5813	3	1	0	2	2.3196
1- N'Guessan D/ 2- Perry T/ 5- Carter C/ 20- Colbert J/ 24- Kaluma A/	02:54	4-7	-3	1.3793	3	0	1	1	0.6803
4- Ames D/ 5- Carter C/ 8- Jones R/ 20- Colbert J/ 24- Kaluma A/	02:13	2-7	-5	0.9023	1	0	1	0	0.5814
2- Perry T/ 5- Carter C/ 8- Jones R/ 13- McNair Jr. W/ 24- Kaluma A/	01:47	4-0	4	2.2430	2	0	0	0	1.4493
1- N'Guessan D/ 4- Ames D/ 5- Carter C/ 20- Colbert J/ 24- Kaluma A/	01:18	4-2	2	3.0769	2	0	1	0	1.3333
2- Perry T/ 5- Carter C/ 8- Jones R/ 20- Colbert J/ 24- Kaluma A/	00:57	2-2	0	2.1053	1	0	0	0	1.0638
1- N'Guessan D/ 2- Perry T/ 4- Ames D/ 5- Carter C/ 20- Colbert J/	00:52	0-0	0	0.0000	1	1	0	0	0.0000
1- N'Guessan D/ 2- Perry T/ 4- Ames D/ 5- Carter C/ 24- Kaluma A/	00:21	0-0	0	0.0000	0	0	0	0	0.0000
2- Perry T/ 4- Ames D/ 5- Carter C/ 8- Jones R/ 24- Kaluma A/	00:07	0-0	0	0.0000	0	0	1	0	0.0000