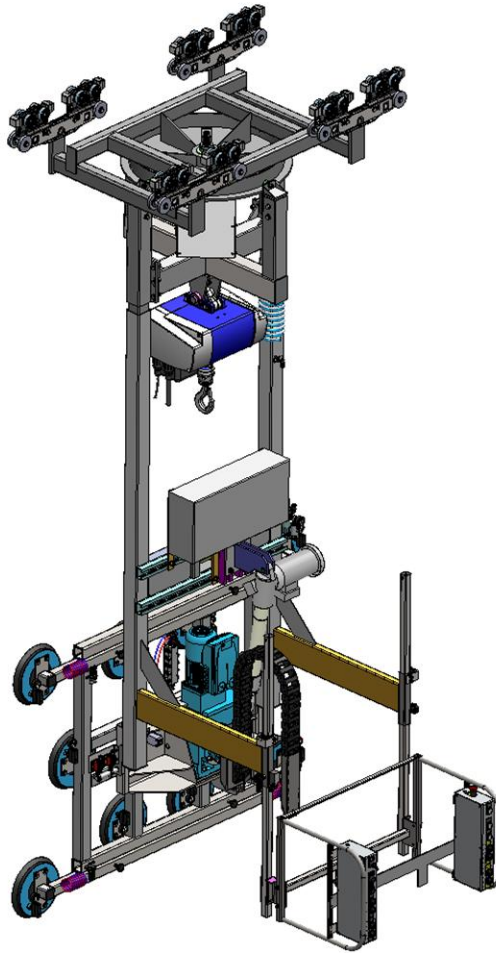


Lifting your productivity

IZDEKE 990 K85 special

ISOLIFT with electric lifting, turning and tilting



Key features:

- Delivered with an integrated crane trolley for easy installation on light weight craneway systems with a double-rail jib
- Quick and safe transportation of glass and other plates with rigid handling equipment guidance
- Accurate positioning with stepless, adjustable lifting speed (chain hoist)
- Suction frame turning stepless, controlled by frequency converter
- Tilting 0-90° by motor
- Service desk adj. in height incl. pneumatic fixing
- Fixed extension of service desk in length (300 mm)

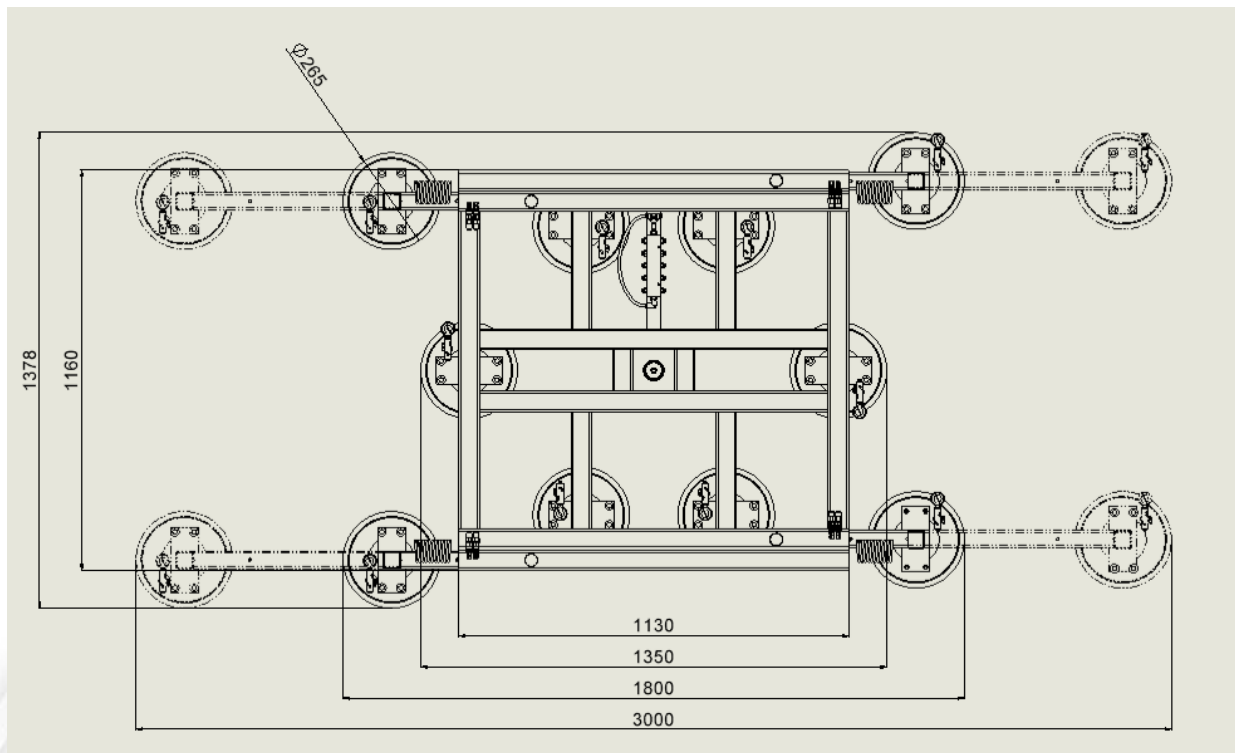
Safety:

- Vacuum system uses Venturi nozzles with non-return/self-holding valves and manometers on each suction cup.
- Meets EN 13155 requirements for power failures. In case of power failure, the vacuum lifter can hold the load for 5 minutes, ensuring safe placement of the load
- Warning whistle if air pressure drops

Benefits:

- Ergonomically arranged control elements
- Adjustable suction pads





Technical data

| | |
|------------------------|---|
| Lifting capacity | 990 kg |
| Stroke | approx. 1400-2500 mm |
| Speed of stroke | 4/1 m/min |
| Operator panel | Adj. in height |
| Suction frame | 10107418 |
| Suction frame rotation | 360° endless |
| Suction frame tilting | 0-90° by motor |
| Vacuum generation | Venturi nozzles with self holding valve at each suction cup |
| Suction cups | 10x265 mm EPDM (4x extendable) |

Technical data

| | |
|----------------------|----------------------------------|
| Crane trolley | KKW 850 |
| Wheel gauge | 850 mm |
| Wheel base | 1000 mm |
| Own weight | ~690 kg |
| Power supply | 2 kW, 400 V, 50 Hz, 3 Ph, PE 16A |
| Feed air supply | 6,5 bar, 3/4" |
| Suction frame colour | RAL 5015 |
| Admission colour | RAL 7035 |

Available options:

- Service desk adjustable in height/length
- Modification of suction frame
- Automatic power save function
- Control integration of friction wheel drive system
- Special colors