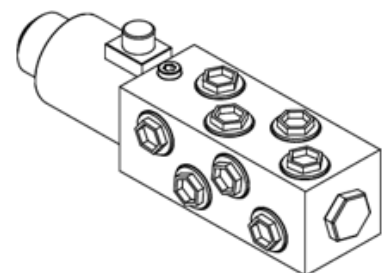
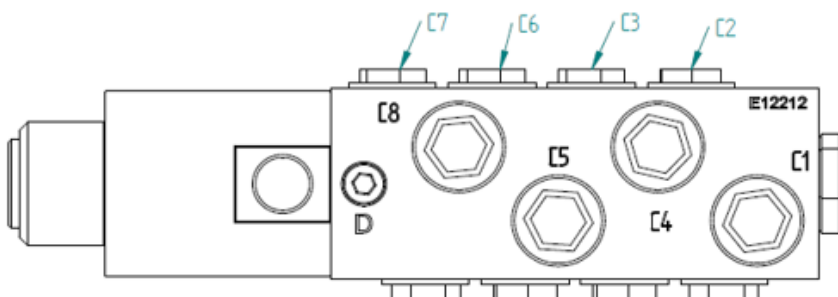
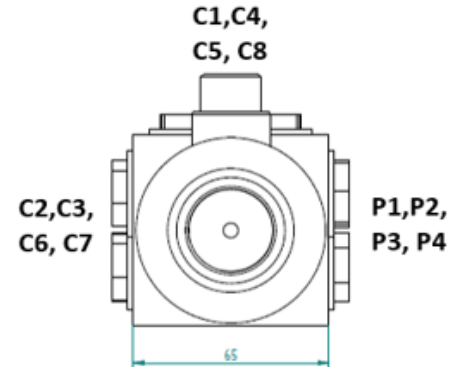
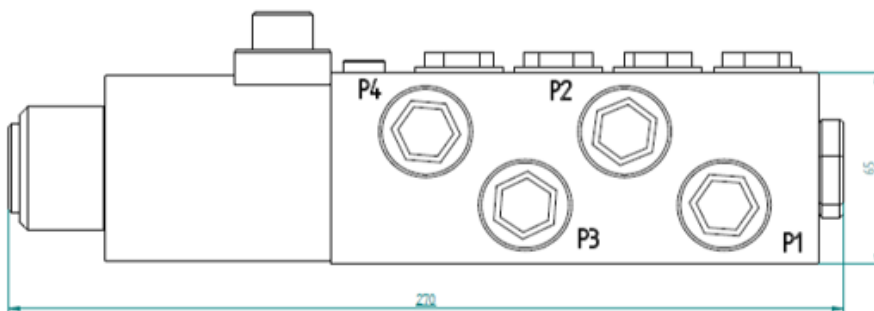
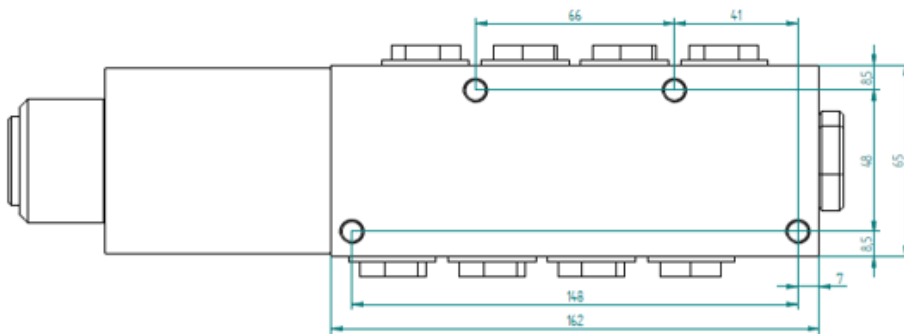
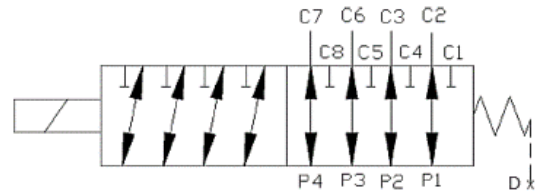


## Solenoid controlled 12/2 directional valve

- connection R1/2", drainage line D R1/8"
- voltage 12VDC or 24VDC (36W)
- flow 80 l/min
- max. pressure 210 bar (with drainage line D in use 315 bar)



Piippo Hydraulic: Yrittäjätie 10, 74700 Kiuruvesi FINLAND tel. +35817750500