

## Valve for V plough

- connection R3/8", (T, P1,P2) R1/2"
- voltage 12VDC or 24VDC
- flow 50 l/min
- max. pressure 210 bar
- adjustable shock relief valves V-C1 and V-C2 (wings, piston side)
- fixed shock relief valves with inlet valves V-C3 and V-C4 (wings, piston rod side)
- T connection to pressure accumulator or tank



### Assembly instructions:

#### Left wing cylinder

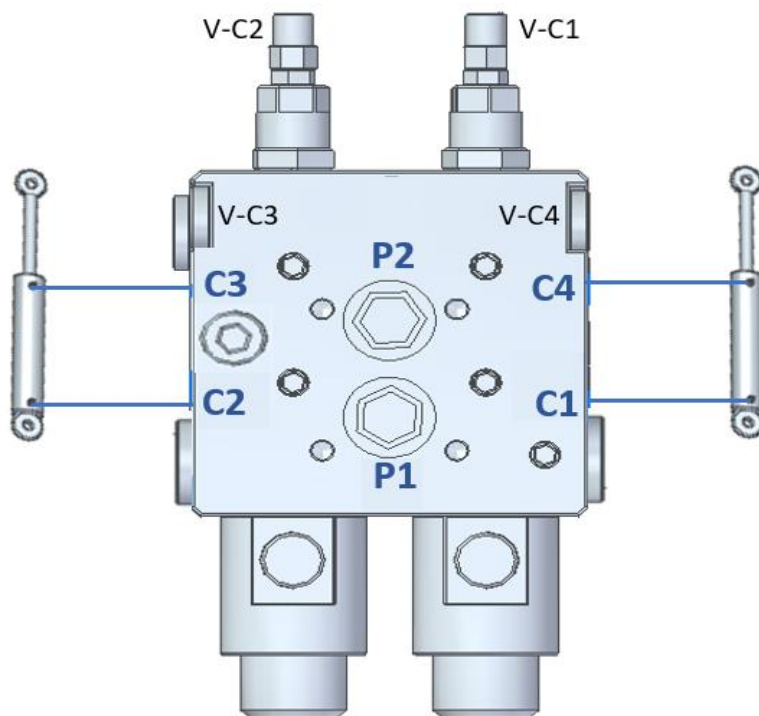
- outgoing connection to piston side C2+
- outgoing connection to rod side C3-

#### Right wing cylinder

- outgoing connection to piston side C1+
- outgoing connection to rod side C4-

Incomming pressure: P1 and P2

Tank- or pressure accumulator: T



**PATENT  
PENDING**



### Functions:

- Power off -> Wings operate diagonally
- Power on left coil -> Left wing in operation
- Power on right coil -> Right wing in operation.
- Power on both coils -> Wings operate simultaneously in or out (wings connected in parallel without flow distribution)

