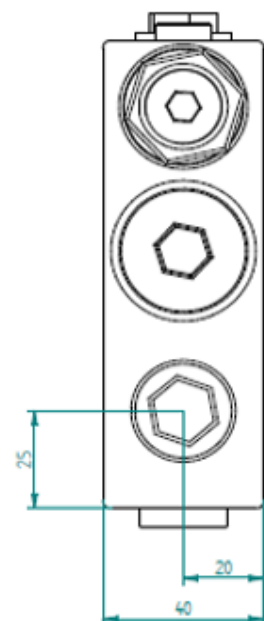
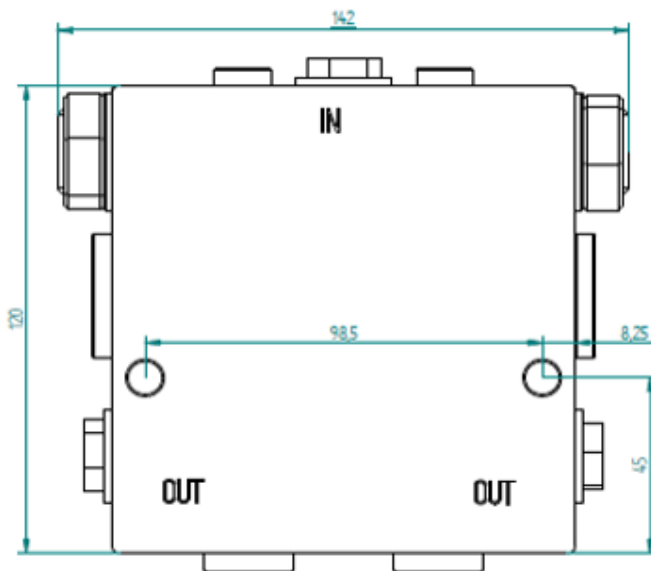
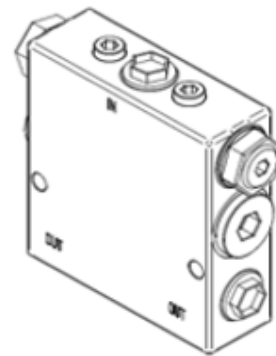
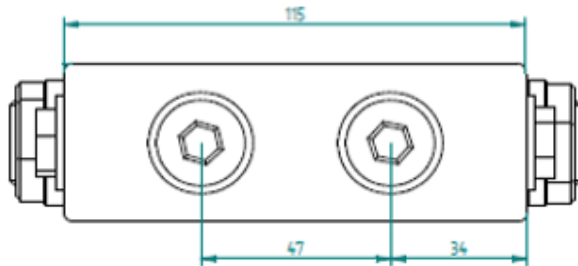
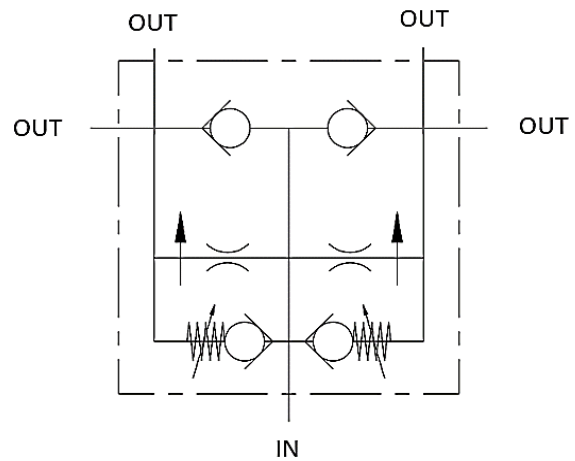


## Virtauksenjokoventtiili 50/50 päätytasauksella

- liitäntä R3/8"
- virtaus 7-30 l/min
- max. paine 300 bar
- vapaa paluuvirtaus
- varoventtiilien säätöalue 80-210 bar



Piippo Hydraulic: Yrittäjätie 10, 74700 Kiuruvesi FINLAND tel. +35817750500