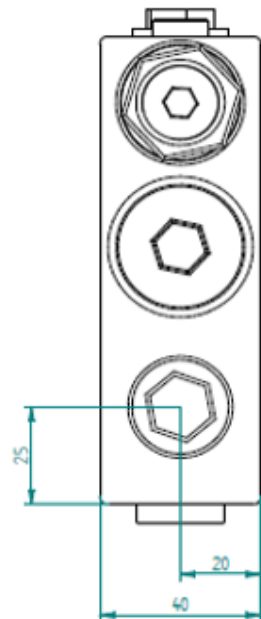
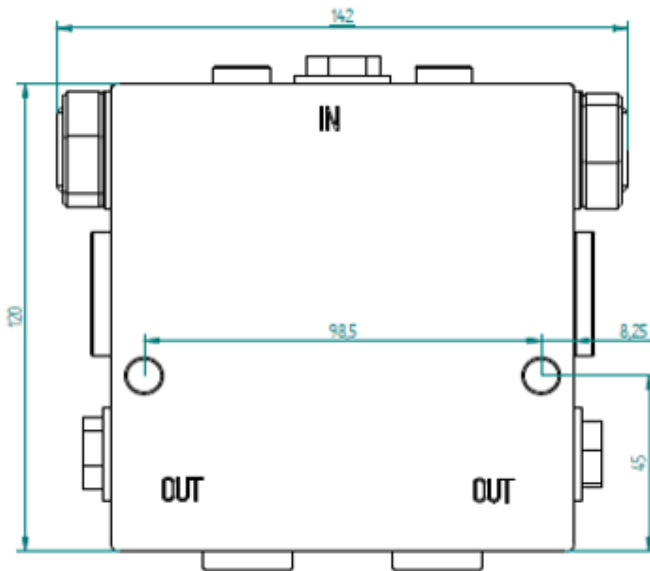
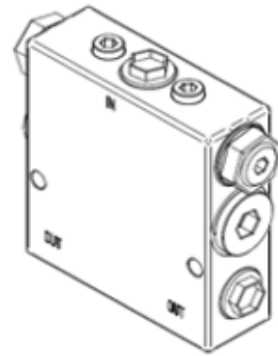
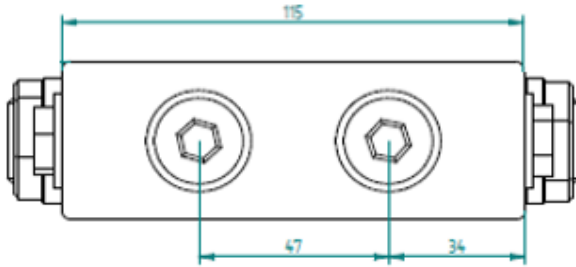
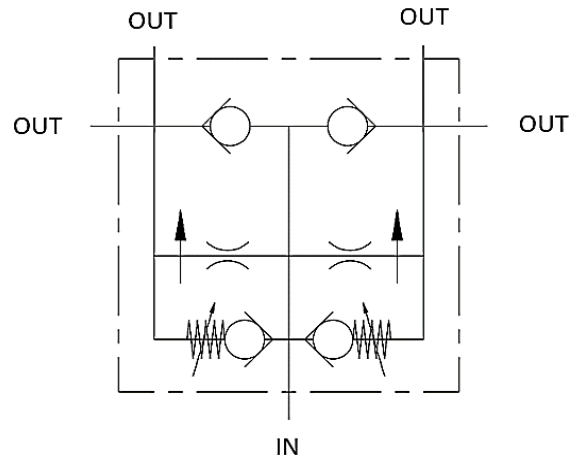


Flow diversion valve 50/50 with end position compensator

- connection R3/8"
- flow 7-30 l/min
- max. pressure 300 bar
- unrestricted return flow
- adjustment interval of shock relief valves 80-210 bar



Piippo Hydraulic: Yrittäjätie 10, 74700 Kiuruvesi FINLAND tel. +35817750500