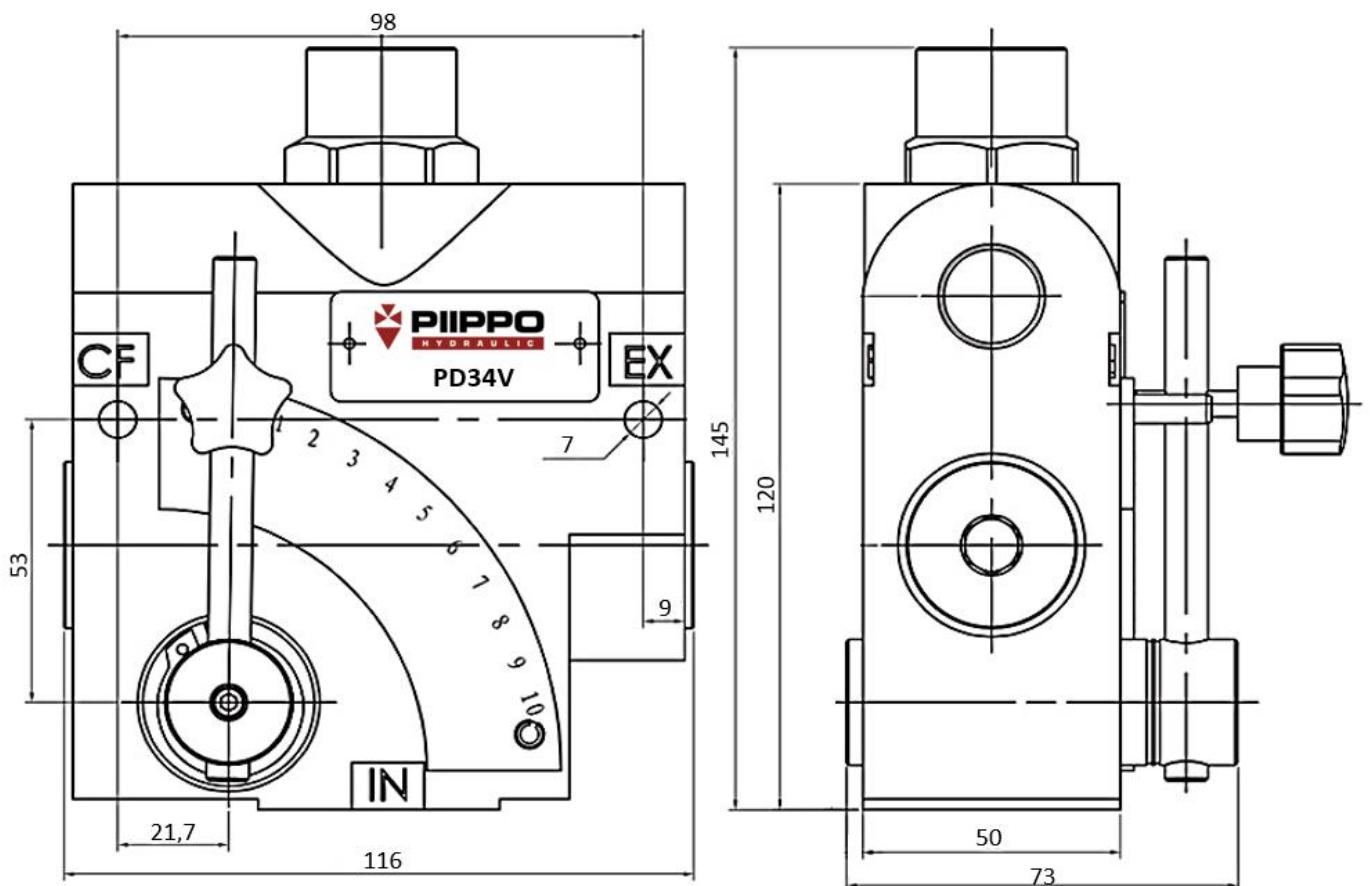
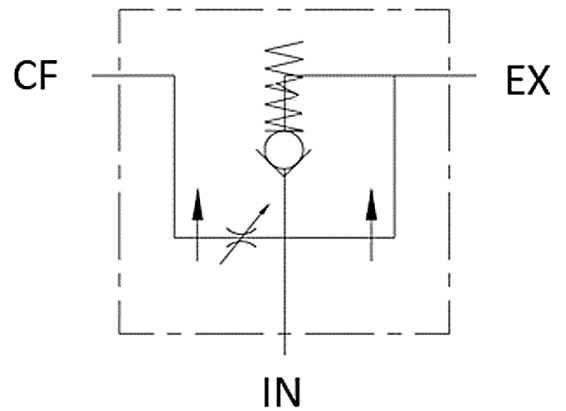


Flow rate control valve, pressure compensated

- connection R3/4"
- flow 120 l/min , adjustment interval 0-120 l/min
- max. pressure 210 bar
- pressure compensated 3 way flow rate control valve
- fixed relief valve 160 bar
- IN = inlet, CF = controlled flow and EX = excess flow



Piippo Hydraulic: Yrittäjätie 10, 74700 Kiuruvesi FINLAND tel. +35817750500