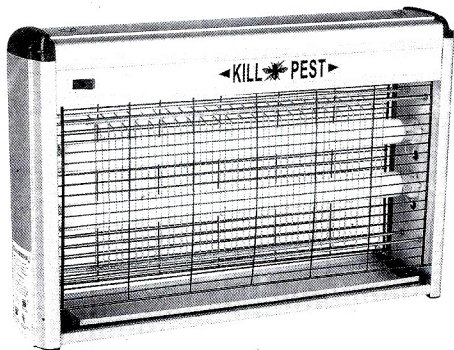


MOSQUITO KILLER

Instruction Manual



Electronic Mosquito Killer is made scientifically by the sensitive characteristic of mosquito and fly. It is produced adopting special trap mosquito ultraviolet tube and the elements of safe and efficiently high-pressure electrical hit. It is ideal and efficiently environment protecting tools to kill mosquito using in Family, office, hotel, supermarkets, and restaurant etc.

1. Warning:

- ① Before using, please make sure the voltage and frequency meet the demand of the product, the outlet must have the lines to the ground.
- ② Don't let the children play the product to avoid the electrical hit, don't touch the electrical web with the hand and metal electric object when the mosquito killer working.
- ③ The unit must be hanged on the wall or far away from the ground that the people can touch easily, it will get the good killing result when fit in 2-3m high position.
- ④ The tube shining show it works when the power is on, it is normal if the sound of the "pa pa" when the unit shock the pest.
- ⑤ Please cut off the power before cleaning the mosquito and fly's body, then open the outside web, cleaning by the plastic brush.

2. Product specification

Input Voltage: 220~

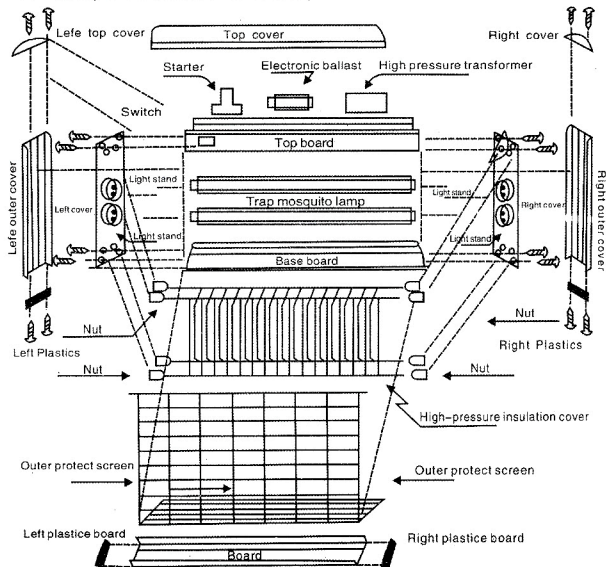
Rated Frequency: 50/60 HZ, the voltage of electric net: 2500V

Insulation electric resistance $\geq 500\text{M}\Omega$

Leak current: 0.1mA

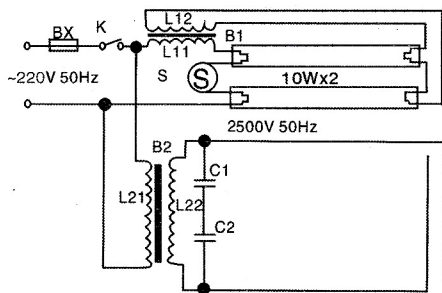
Rated power: 12W 16W 20W 30W 40W

3. Shape and name of parts



4. Precautions:

- ① Indoor use only, and it is forbid to clean in water and put into water.
- ② Please cut off the power before changing the tube; discharge by using the insulated screw to touch the electric web, then change the tube after disconnecting the outside web.
- ③ In order to avoid dangerous, please change the electric wire by professional maintenance worker or the repair and maintain department once the wire is damaged.
- ④ It is forbid to using this product near the area of inflammables and explosive.



B1-lamp ballast
B2-high pressure transformer
K-switch

S-lamp starter
BX-power fuse
C-capacitor