

BUY ON

www.cablematic.com

- Functional Overview

The module uses a USB interface to link with the host, and the user can control and view the status of the relay through the host computer software. The device does not need to install additional driver files, which is convenient to use.

- Feature:

1. On board square USB interface, stable connection
2. Use imported high performance USB control chip
3. Use genuine Songle relay
4. Military-grade PCB board production

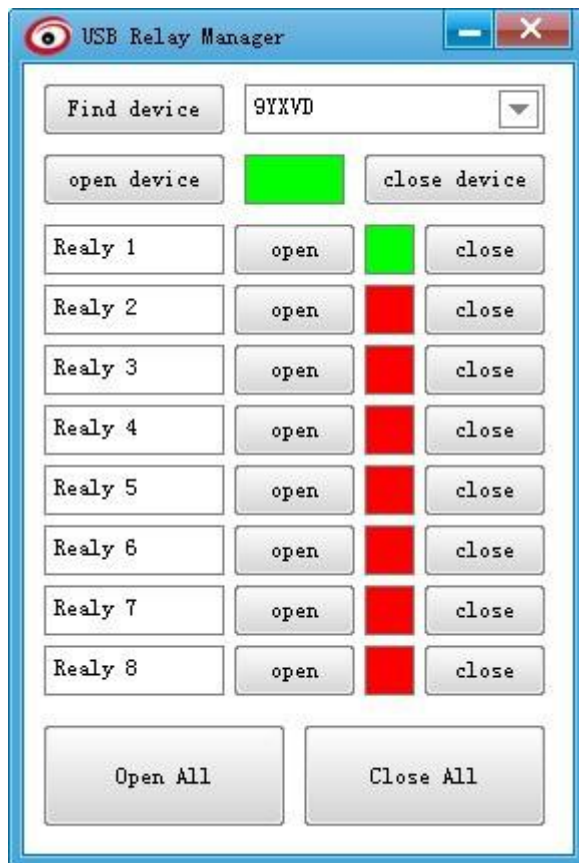
- Product Parameters:

1. The relay is a 5V Songle relay. The relay can control up to 250V, 10A AC load and 30V, 10A DC load.
2. Control terminal connection mode: NC/COM/NO.



- How to use

First open the relay control software



1. Click the "Find device" button to search for devices connected to the USB bus.
2. Selecting the corresponding number from the drop down list to the right.
3. Click the "Open device" button to open the device, Under normal circumstances, the device status is green.
4. Turn the specified switch on and off. Click the "Open" button open the switch, Click the "Close" button close the switch. Click the "Open All" button open the all switch. Click the "Close All" button close the all switch.

Wiring diagram:

