

Smart Wi-Fi Wall Switch User Manual



Alexa TUTORIAL



Google Home TUTORIAL



Attention:

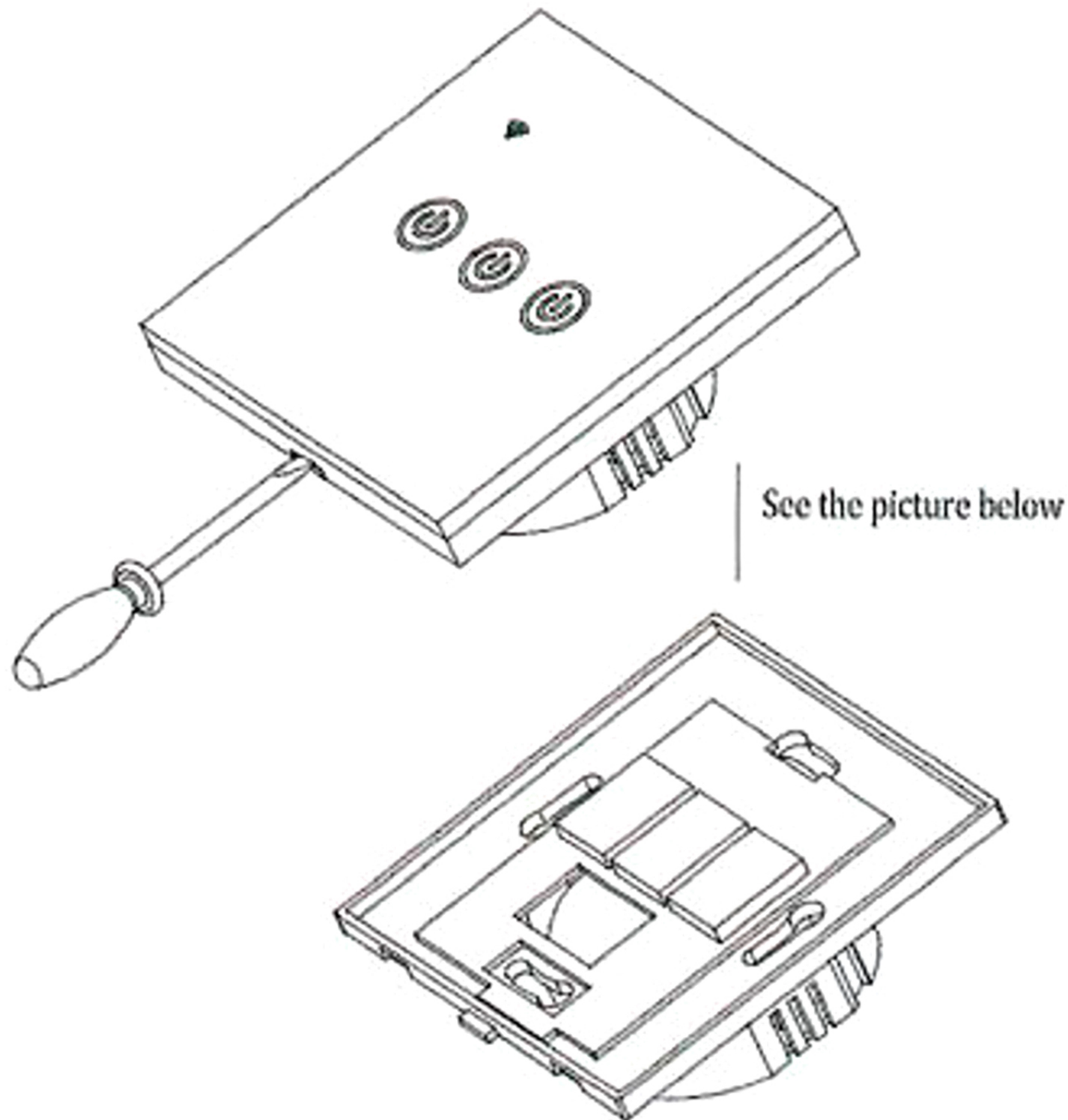
1. Products can only be paired on 2.4G-wifi-router, don't accept the 5G-wifi-router
2. Please set your home WiFi account name and passwords use numeric and letters, don't use special symbols

Installation Guide

1. Installation

Separate the upper and lower parts from the switch by screwdriver

Demension: 3.4x3.4x1.5in



(Noted: Distinguish between each corresponding slot)

2. Prepare to install wiring

Attention: Neutral wire is required.

2.1 Live Wire connects "L" terminal

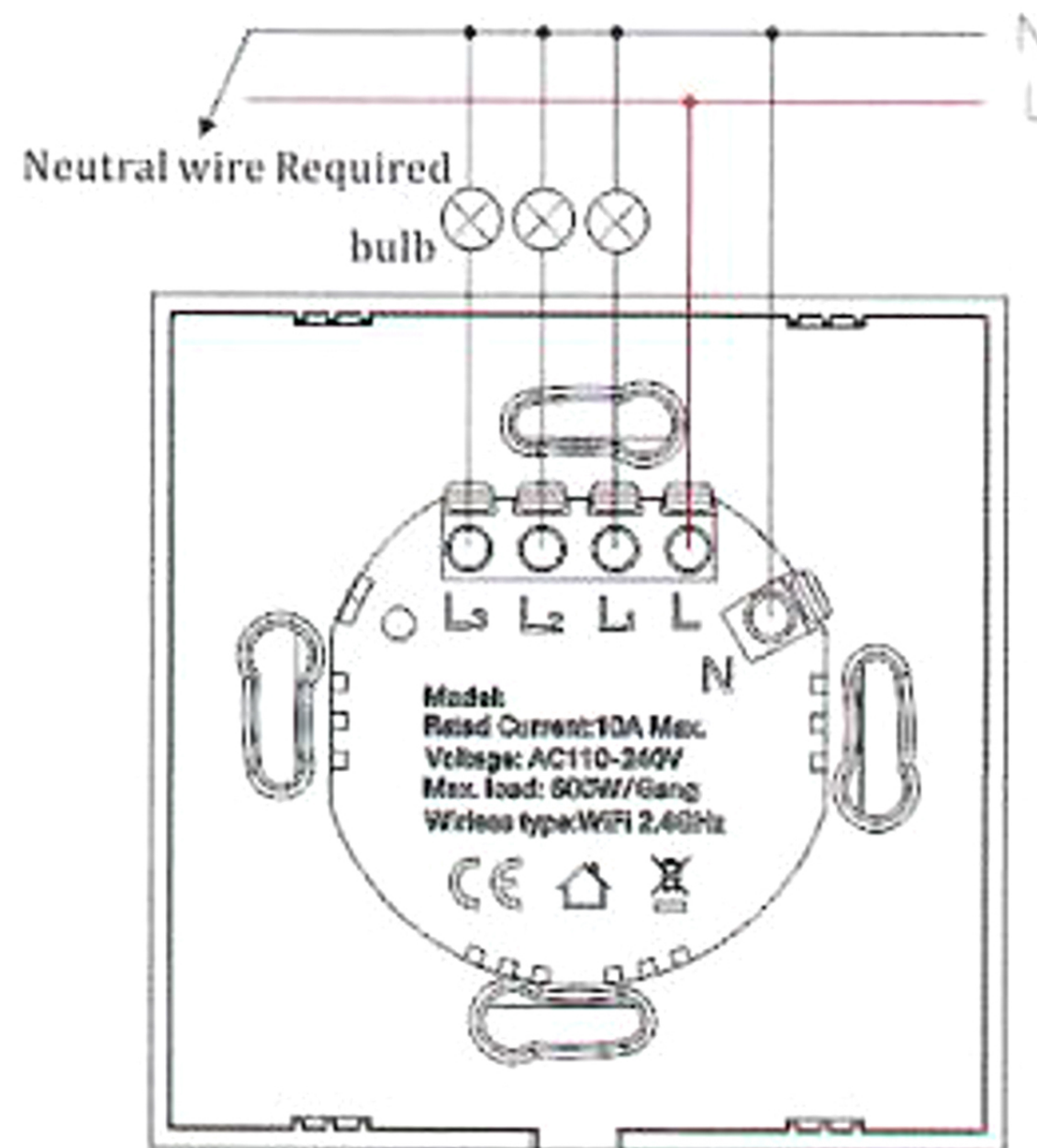
2.2 Bulb Wire connects "L1, L2, L3" terminal

2.3 Neutral Wire connects "N" terminal (Attention: Neutral wire is required.)

1 gang connects "L1" Terminal

2 gangs connects "L1, L2" terminal

3 gangs connects "L1, L2, L3" terminal



wring diagram



CABLEMATIC

3. Fix the switch onto wall

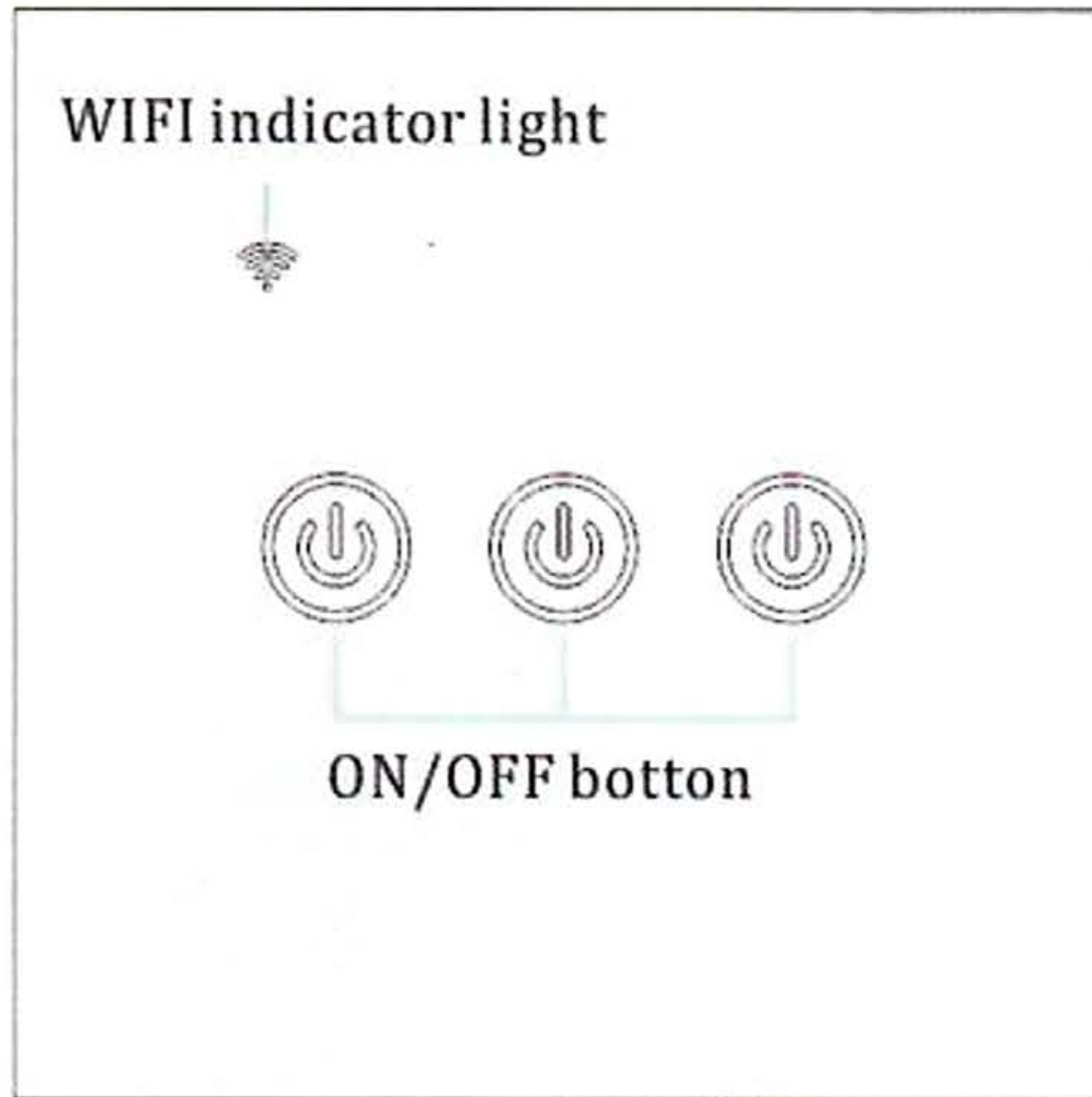
3.1 Put the switch lower parts into switch box in the wall

3.2 Mount the two side screws

3.3 Install the upper top case (install from up above)

3.4 Cover the upper top case into switch

3.5 Turn on electricity, and then LED light will be flashed quickly for pairing



Indicator Light Status:

1. The red light continuous brightness

-The switch is connected succeed with mobile phone APP

2. The red light blinking slowly

- The switch is not connected to the network

3. The red light flash continuously and quickly

- The switch is currently on the status of matching with mobile phone APP.

4. The red light flash 1 time every 3 seconds

-The switch is into AP pairing Mode

How to download App?

Scan the QR code below or search Smart Life in IOS APP store or Google play.



IOS & Android System

Setting Smart Life APP

How to Register and Login

1. Download or Scan the QR Code and install Smart Life App
2. Once download or Scan the QR Code, the App will ask you to register your device



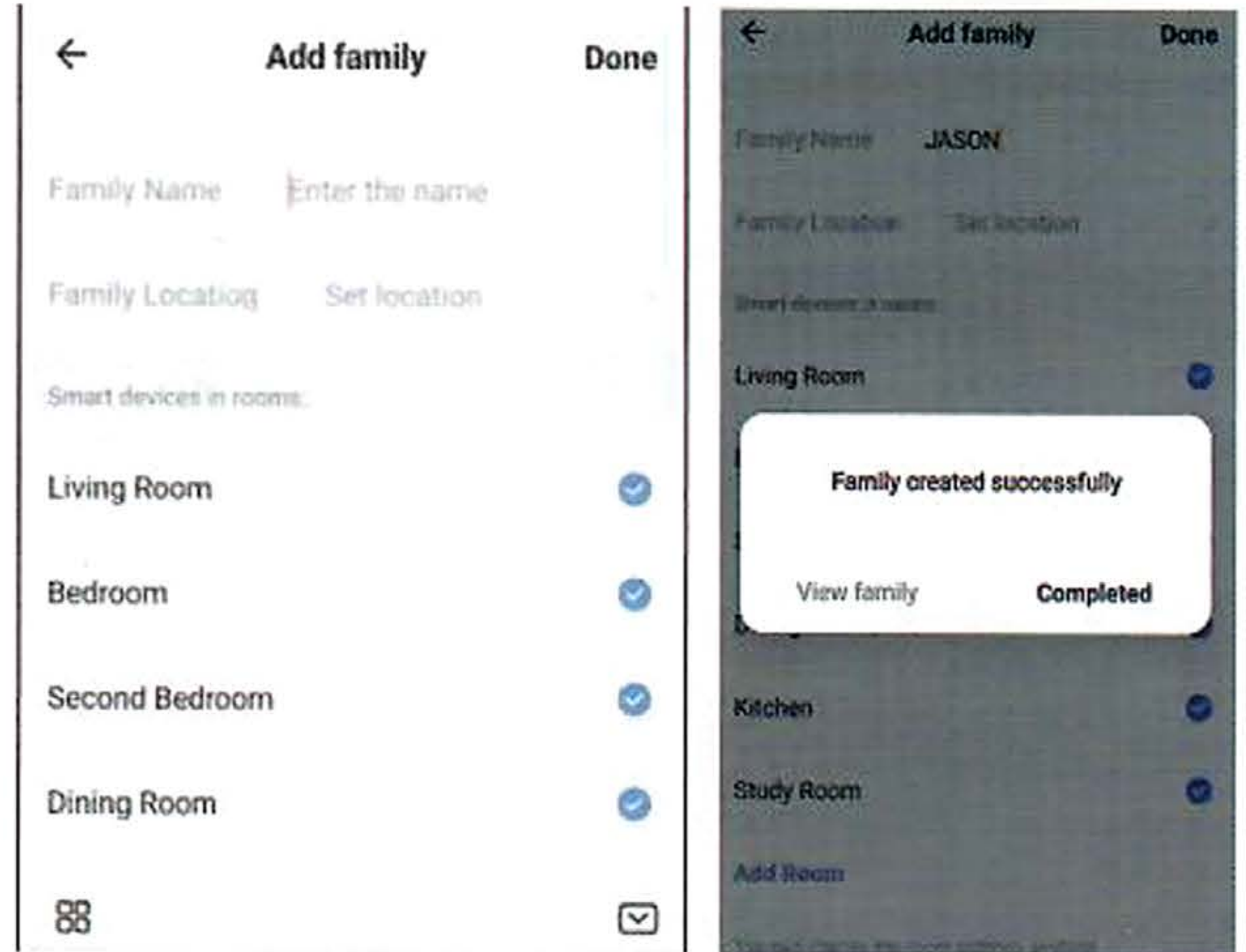
3. Enter your phone number or email which you prefer and select the country you live in.
4. Obtain verification code
5. Enter verification code
6. Set Password

Enter verification code

Set Password



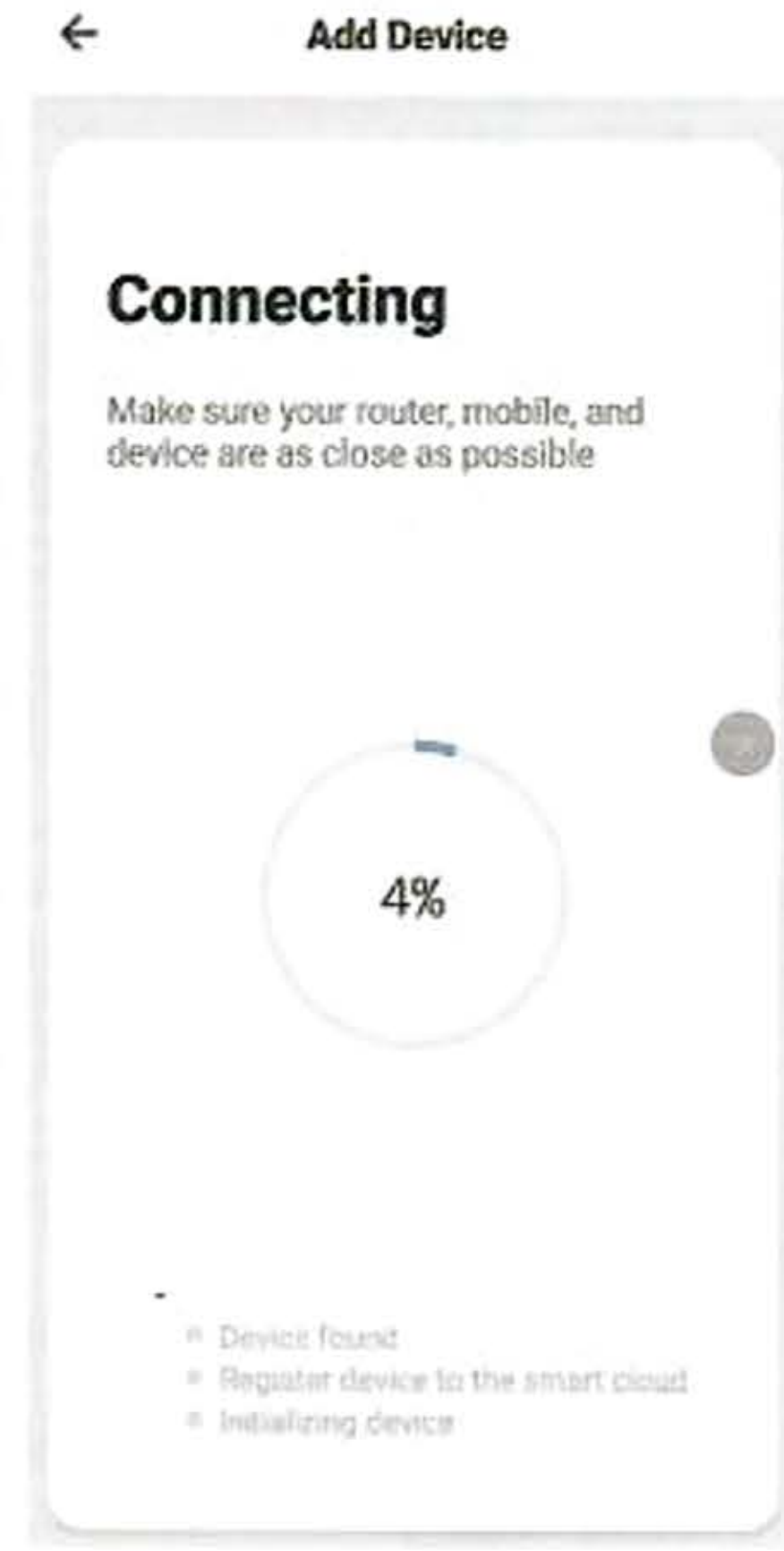
7. Create family
8. Enter the family name and select the room
9. Family create successfully



How to adding a ew device in quick connection

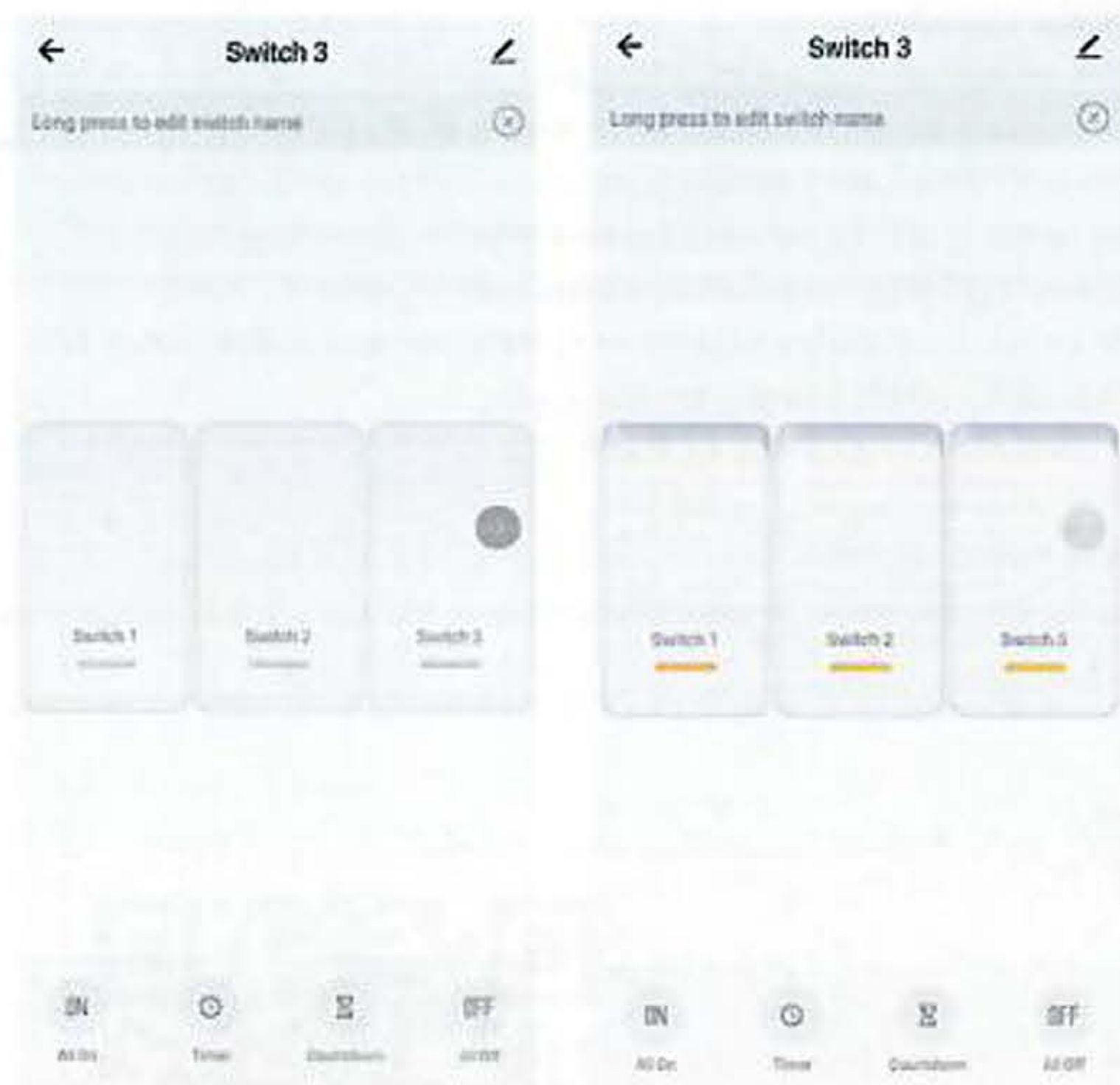
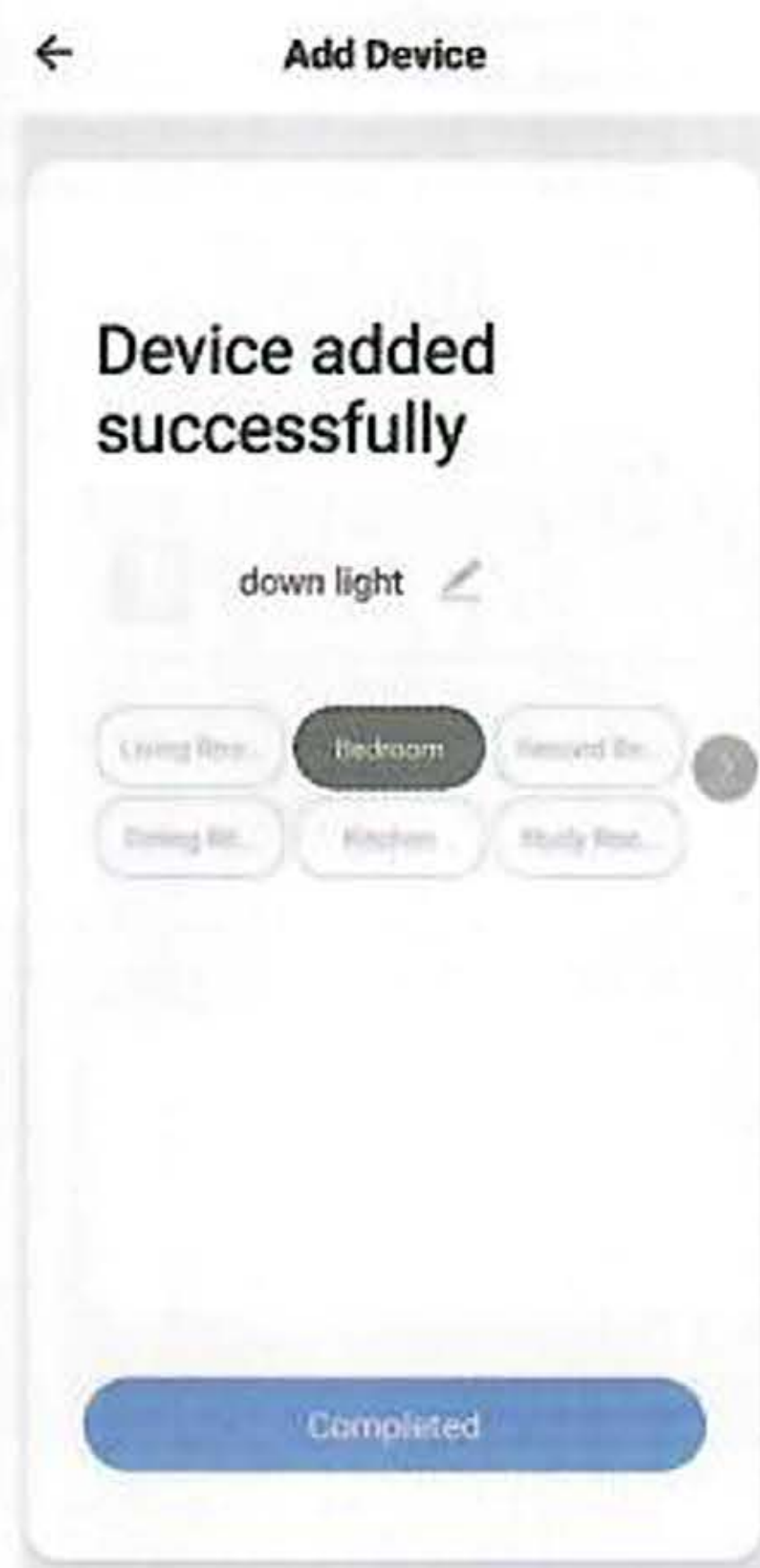
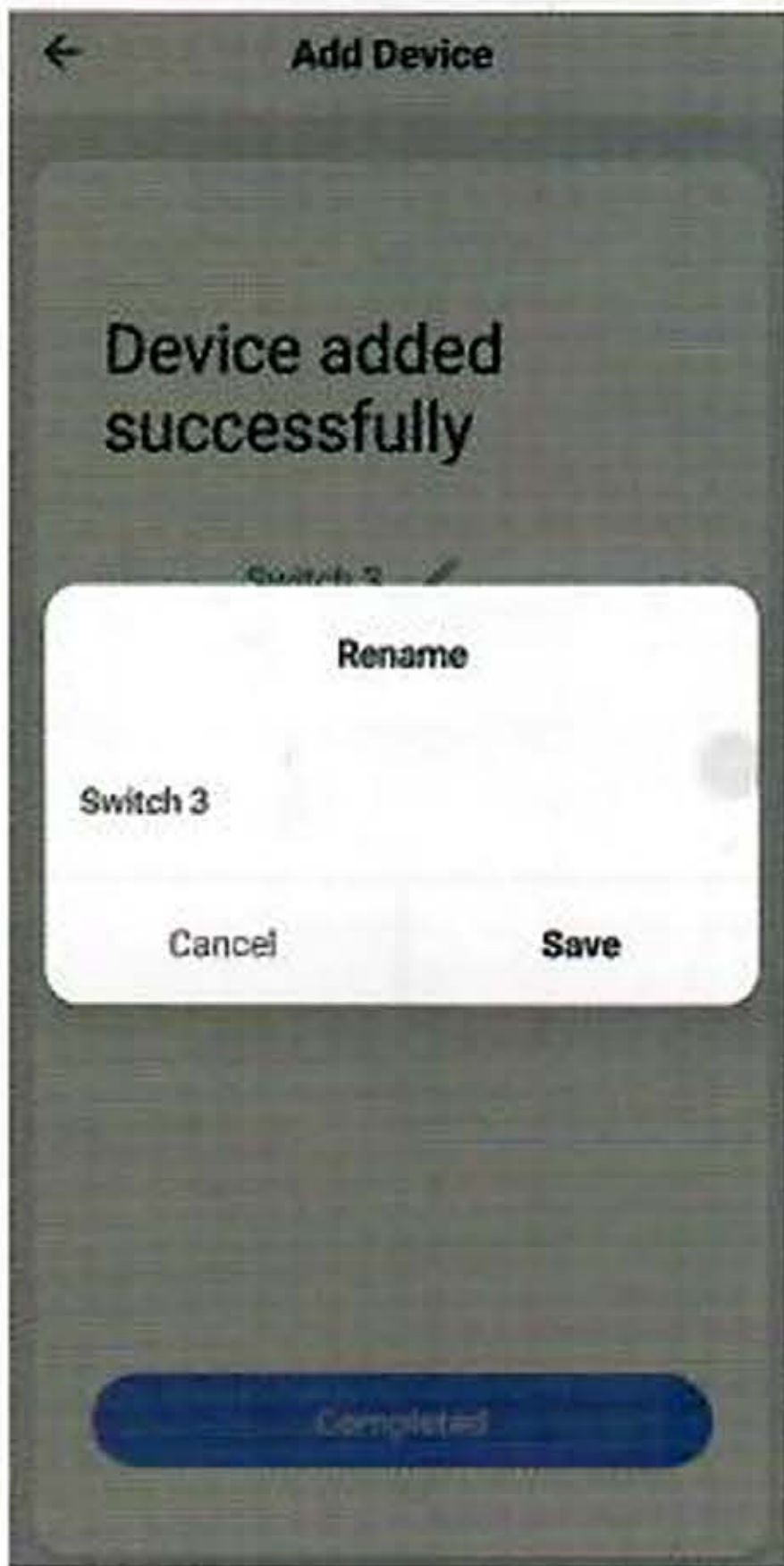
1. Connect the switch with power
2. Press the power button on the switch 6-10 seconds until the red light blinks quickly to reset the switch
3. Open App and tap "Add Device or +" and select "Wall switch" to add
4. Please make sure power on the device and blue light (Wi-Fi indicator) rapidly blinks as 2 time per second





5. Select Wi-Fi network, input Wi-Fi password, and confirm that will prompt connection

6. Once connected the app will prompt the connection



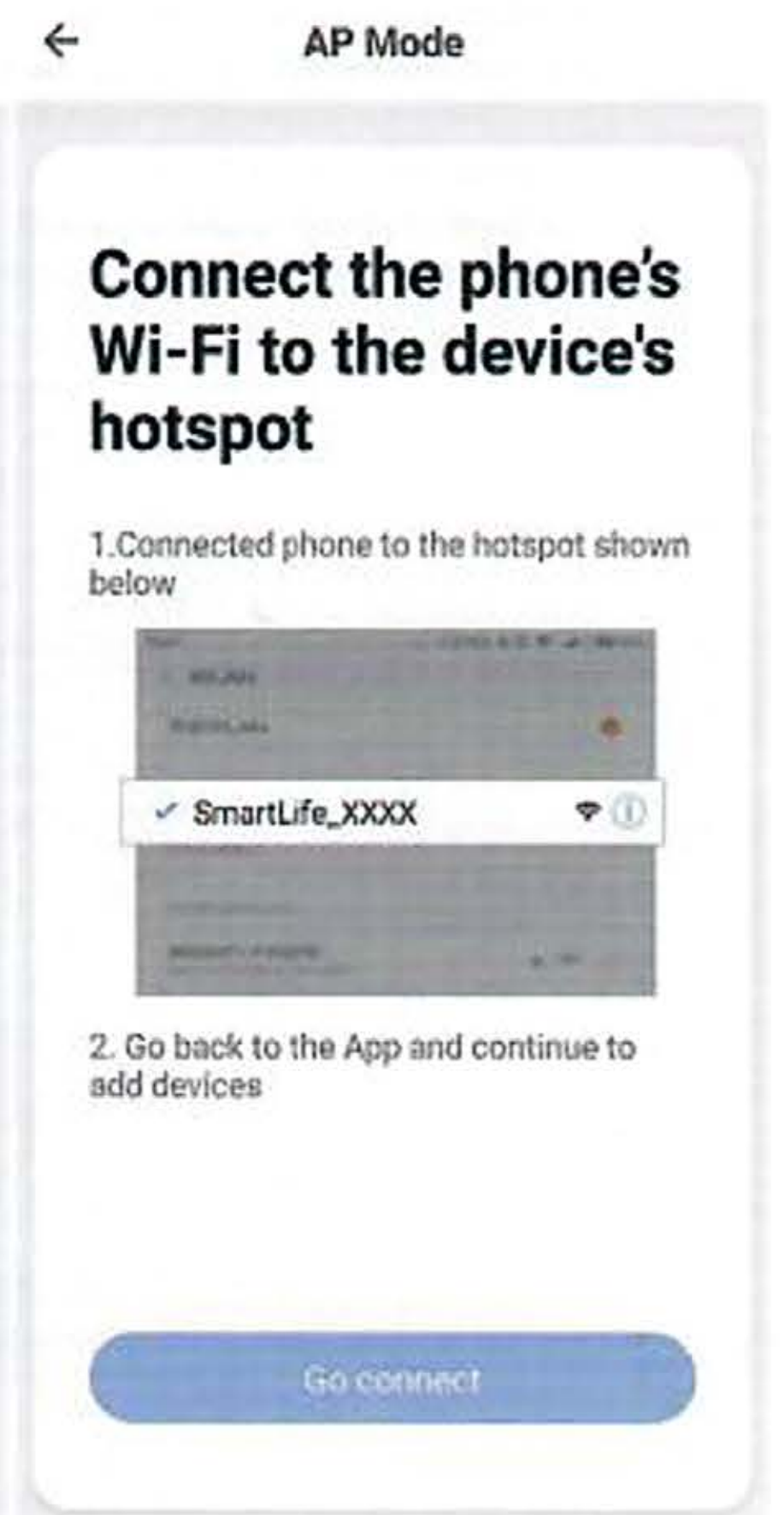
7. Rename the device and select the room then tap Completed.
(Attention: The name should use numeric and letters, don't use special symbols.)

Adding a New Device in AP Mode

1. Connect the switch with power.
2. Press any button on the switch (about 5-10 seconds) until the Wi-Fi indicator light blinks quickly to reset the switch
3. The second time Press any button on the switch until Wi-Fi indicator slowly blinks (1 times in 3 seconds)
4. Press "+" in the main menu of APP and select "wall switch" to add



6. Select Wi-Fi and input Wi-Fi password, press "Confirm".



5. Tap "AP Mode" and "Confirm indicator slowly blink"

7. Press "Go connect"

8. Select "SmartLife-XXXX" and tap "CONNECT"



7. After connected "SmartLife-XXXX", tap the "←"

