

1. Product introduction



Packing list:

Light sensor x1

Instructions x1

Power adapter x1

USB power cord x1

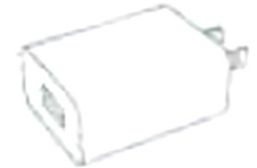
Reset needle x1



Instructions



USB power cord



Power adapter

Thanks for using smart light sensors

Product parameters

Parameters	Min	Max	unit
Working temperature	-20	85	Degree
Working voltage	4.8	12	V
Working current	10	496	mA
Illumination range	0	1000	LUX
Size	58	12	mm
Classification definition	1	3	Degree
Power supply mode			Microb External
Detection module			Diode
Protocol			Wi-fi 2.4GHz
Color			White
Shell technology			PVC bevel angle

Product Reset Description

Long press the bottom reset key until the front indicator flashes, the reset is successful, but also into the distribution network state.

2. Install APP

Download APP: Scan the Smart Life app below to download the two-dimensional code, install and complete the registration; login APP after registration to establish their own family.



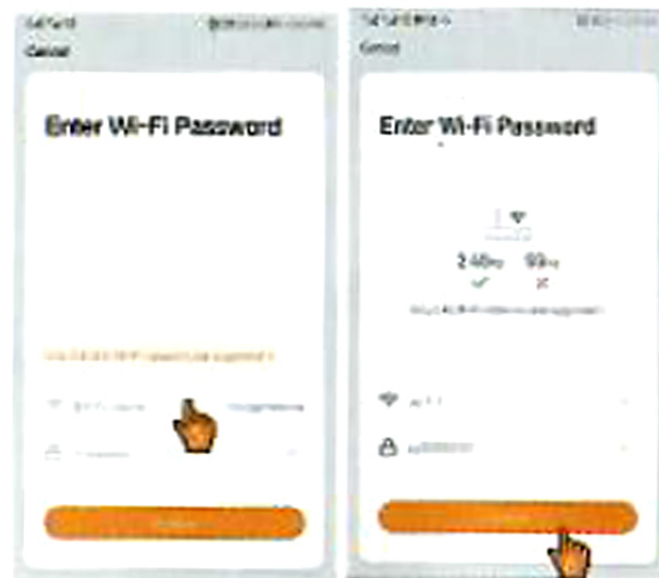
3.Add device-1

- Ensure that WIFI signals accessible to the Internet with 2.4GHz
- Connect the light sensor to the power supply, and you will see the indicator light flash quickly , If not, press and hold the reset button at the bottom until it flashes quickly.
- Open the SmartLife App, click the "+" sign on the top right to find the security sensor ---> light sensor WiFi, Then click next.



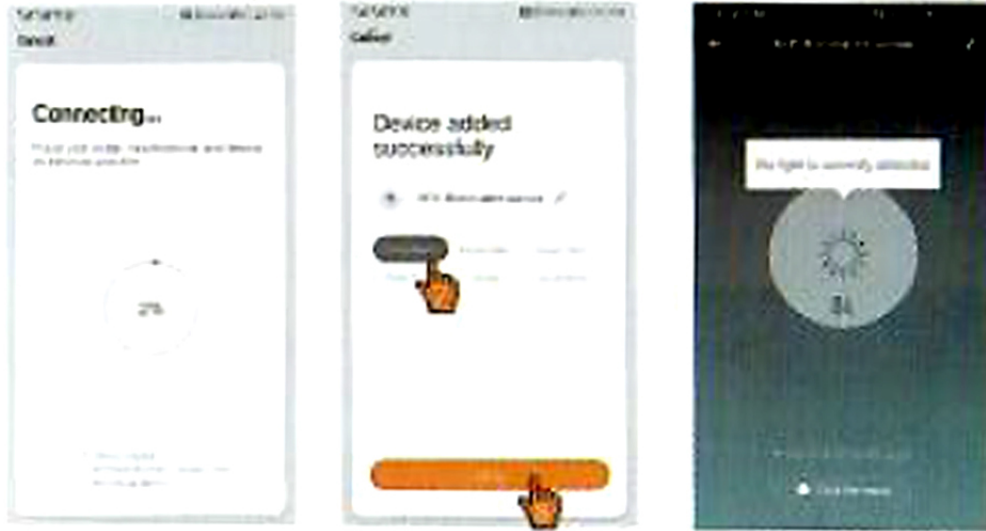
3.Add device-2

- If the phone is not connected to WIFI, please connect to the WIFI
- If the phone is connected to the WIFI network, please enter the WIFI password and click OK.



3.Add device-3

- We come to the [Connecting] interface .When progress reaching 100%then the device will complete the distribution network.
- Come to the [Add Devices] interface,select a room for the device. Click "Finish" after modifying the name of the device.You can see the device now.



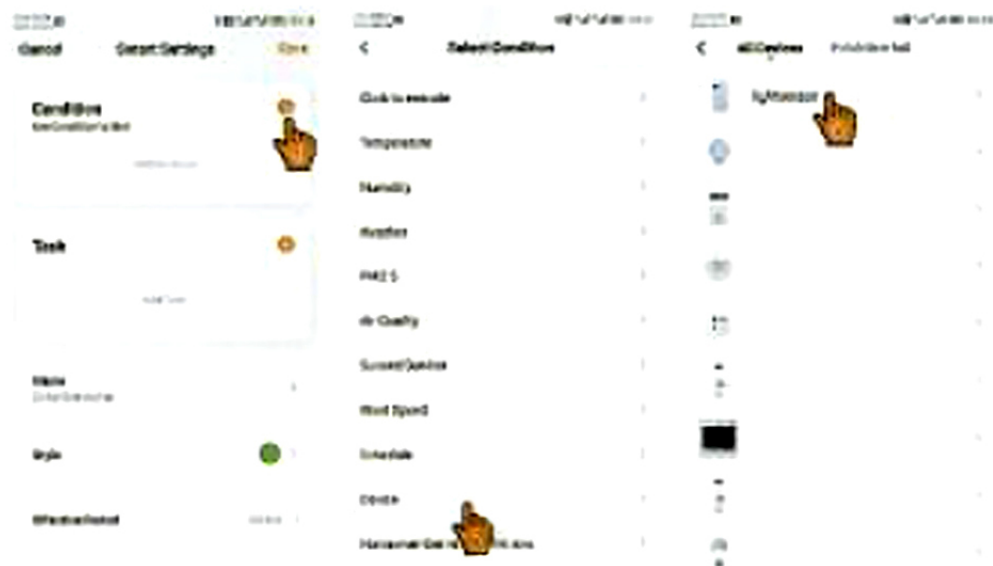
4.Configuration automation-1

- Light sensor can be connected to other controllable equipment (such as socket, switch, curtain, etc.)
- On the home page of Smart Life app, click in the following order to [Intelligent Settings] interface in the order shown below.



4. Configuration automation -2

Click "+" as shown in the figure to enter the [selection condition] interface, and click "equipment", Then select the light sensor



4. Configuration automation -3

Select linkage conditions as shown in the figure, enter submenu and select "highlight 130-1000lux"



4. Configuration automation -4

Click to select the equipment to perform the action in the following order: "living room lamp"



4. Configuration automation -5

In the [Select function] interface, set the switch to close in the following sequence.



4. Configuration automation -6

- Click set automation name according to the following sequence, and then click effective time period as daytime, and repeat every day. In the effective time period, you can configure different effective times according to your own requirements.
- When the light reaches the high light state, it will turn off the lights and save energy; and so on, you can open the curtains, open the lights, close the windows and other automatic actions according to the light brightness.



Warranty card

Name			
Mode		NO.	
Date		Number	
Server			

Instructions

1. Please buy that used properly for maintenance vouchers.
2. There is a 12-month free warranty period to repair the faults caused by the material and process of the machine parts.
3. Because product communication functions depend on public communication networks. This does not require replacement or maintenance for short message transmission delay, failure, communication loss etc.

Not for free

1. Error installation, improper operation damaged device
2. Maintenance and replacement of parts by oneself
3. The fault number has been altered or does not conform to the list in this certificate
4. Water in the machine or something else
5. Faults or injuries caused by natural disasters.