
RP-58 Ethernet Interface Setup Tool Manual

Check the printer IP address and Ethernet ID address

Check the IP address and Ethernet ID address in the power-on self-test page.

All the printer are produced with the same default IP address:192.168.1.87 and the same default Ethernet ID address:168-1—87-18-52-86. Users need to change addresses by“RP-58Tool(IP).exe”and makes sure all the printers have there unique IP address and Ethernet ID address. Otherwise the printer can't connect to the network or print properly.

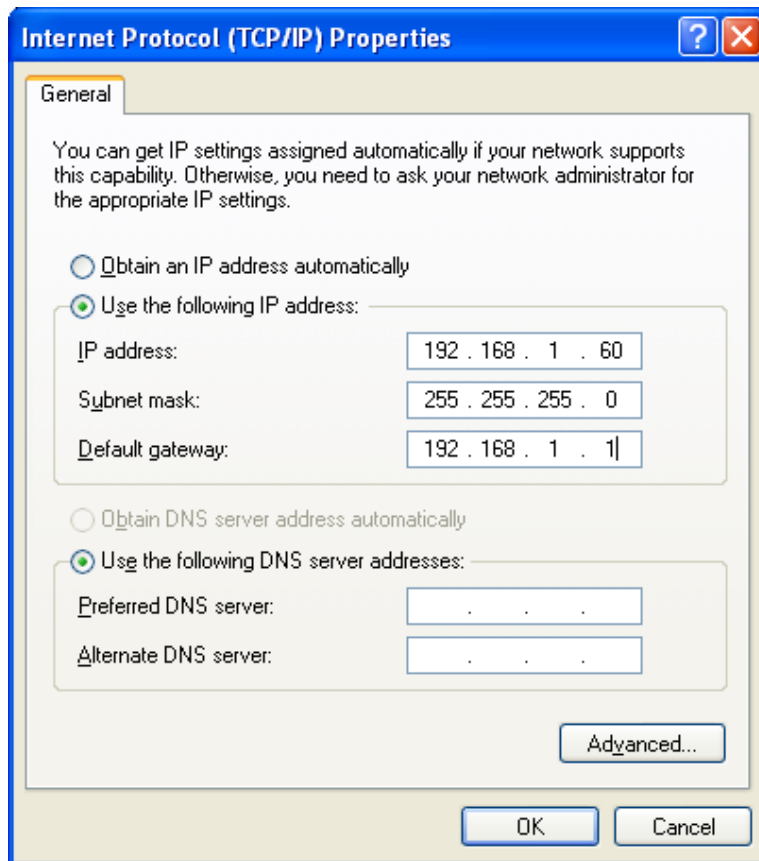
Power-on self-test operation:1, connect the printer with power; 2 ,turn on the power and press the "feed" button; 3,check the reset testing; 4, Release "feed " button within 5 seconds after finish reset testing, and the printer will print on the power-on self-test page.

Cuations during installation and operation:

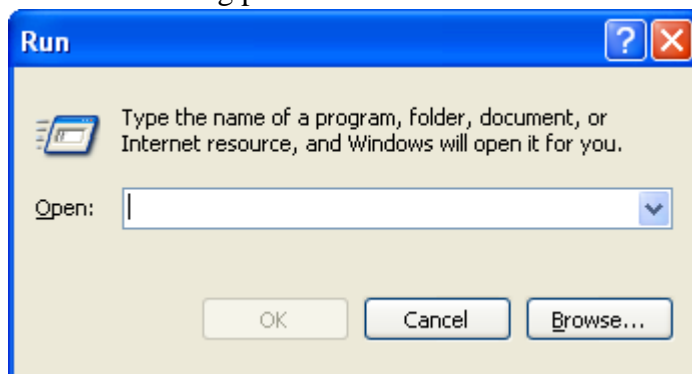
1.The uniqueness of Printer IP address: All the IP addresses of the printers connected with the network must be unique that is the Printer IP addresses must be different from the PC IP addresses. If the Printer has the same IP address as the PC, the printer can't connect to the network or print properly. In that case, users need to change the printer IP address through PrjRP-58.exe which is on the attached CD with the printer (\\RP-58 Driver&Tool\ RP-58Tool(IP).exe) . We will introduce the operation later.

2.The uniqueness of the printer Ethernet ID address:All the Ethernet ID addresses of printers connected with the network must be unique that is the Printer Ethernet ID addresses must be different from the PC Ethernet ID addresses.If the Printer has the same Ethernet ID address as the PC, the printer can't connect to the network or print properly. In that case, users need to change the printer Ethernet ID address through PrjRP-58.exe which is on the attached CD with the printer (\\RP-58 Driver&Tool\ RP-58Tool(IP).exe) . We will introduce the operation later.

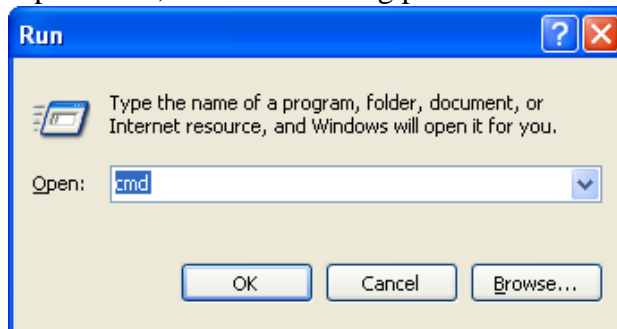
3.The default IP address of the printer is: 192.168.1.87. In order to connect the printer with the PC successfully, users need to change the PC IP address so that the IP addresses of PC and Printer are in the same network segment .For example, if the printer IP address is: 192.168.1.87, users can set the PC IP address as 192.168.1.60 so these two IP addresses are in the same network segment. See the following picture.



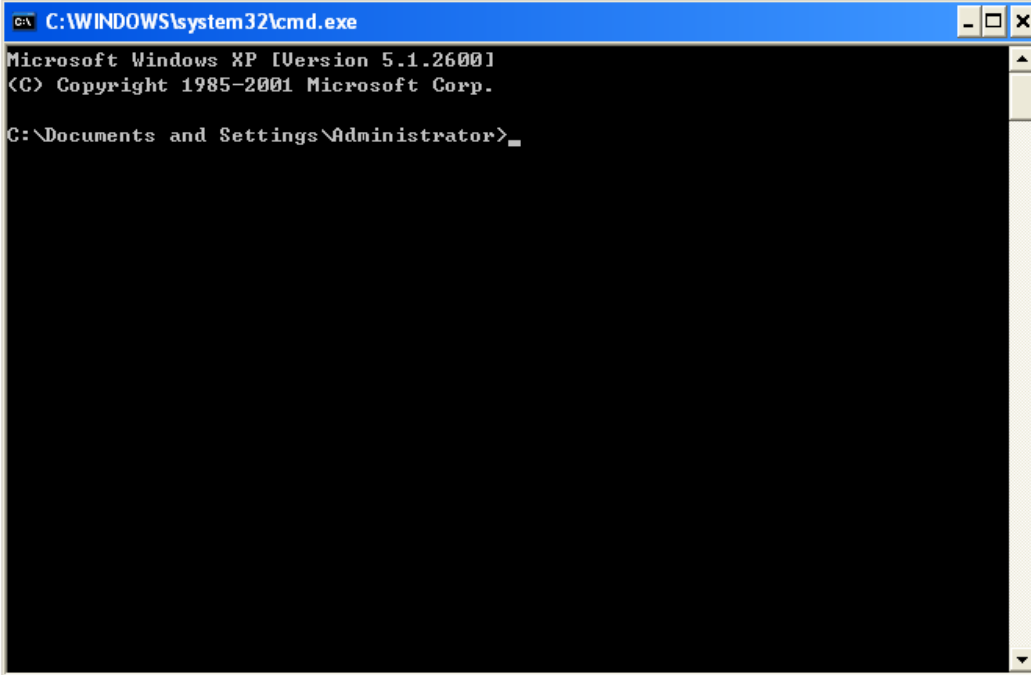
After set the PC IP address in the same network segment with the Printer IP address, users can check the network connection situation on the power-on self-test page through "ping" instruction. If the power-on self-test page shows the IP address as:192.168.1.87, then click "windows" → "Run". See the following picture.



Input 'cmd', see the following picture.



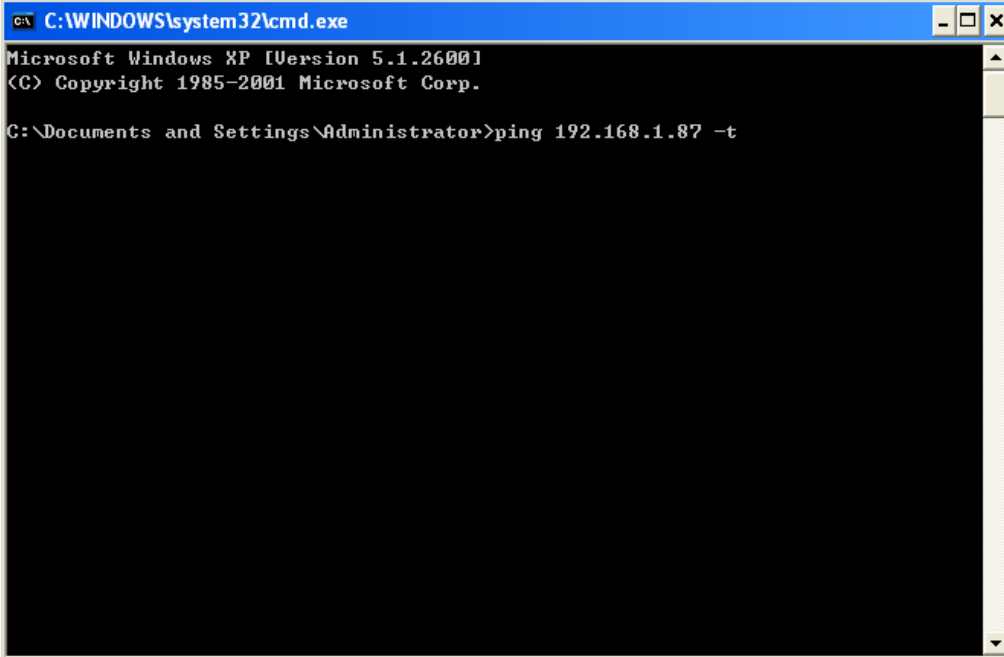
Click "OK", see the following picture.

A screenshot of a Windows XP command prompt window. The title bar reads "C:\WINDOWS\system32\cmd.exe". The window content shows the following text:

```
Microsoft Windows XP [Version 5.1.2600]
(C) Copyright 1985-2001 Microsoft Corp.

C:\Documents and Settings\Administrator>
```

Input ping instruction to test the network connection. The instruction is: ping 192.168.1.87 -t. See the following picture.

A screenshot of a Windows XP command prompt window, similar to the one above. The title bar reads "C:\WINDOWS\system32\cmd.exe". The window content shows the following text:

```
Microsoft Windows XP [Version 5.1.2600]
(C) Copyright 1985-2001 Microsoft Corp.

C:\Documents and Settings\Administrator>ping 192.168.1.87 -t
```

Then press "Enter". If the printer is connected with the PC successfully, then you will see the following picture.

```
C:\WINDOWS\system32\cmd.exe - ping 192.168.1.87 -t
Microsoft Windows XP [Version 5.1.2600]
(C) Copyright 1985-2001 Microsoft Corp.

C:\Documents and Settings\Administrator>ping 192.168.1.87 -t

Pinging 192.168.1.87 with 32 bytes of data:

Reply from 192.168.1.87: bytes=32 time<1ms TTL=128
Reply from 192.168.1.87: bytes=32 time<1ms TTL=128
Reply from 192.168.1.87: bytes=32 time<1ms TTL=128
Reply from 192.168.1.87: bytes=32 time<1ms TTL=128
```

Otherwise you will see "Request timed out" error as the following picture.

```
C:\WINDOWS\system32\cmd.exe - ping 192.168.1.87 -t
Microsoft Windows XP [Version 5.1.2600]
(C) Copyright 1985-2001 Microsoft Corp.

C:\Documents and Settings\Administrator>ping 192.168.1.87 -t

Pinging 192.168.1.87 with 32 bytes of data:

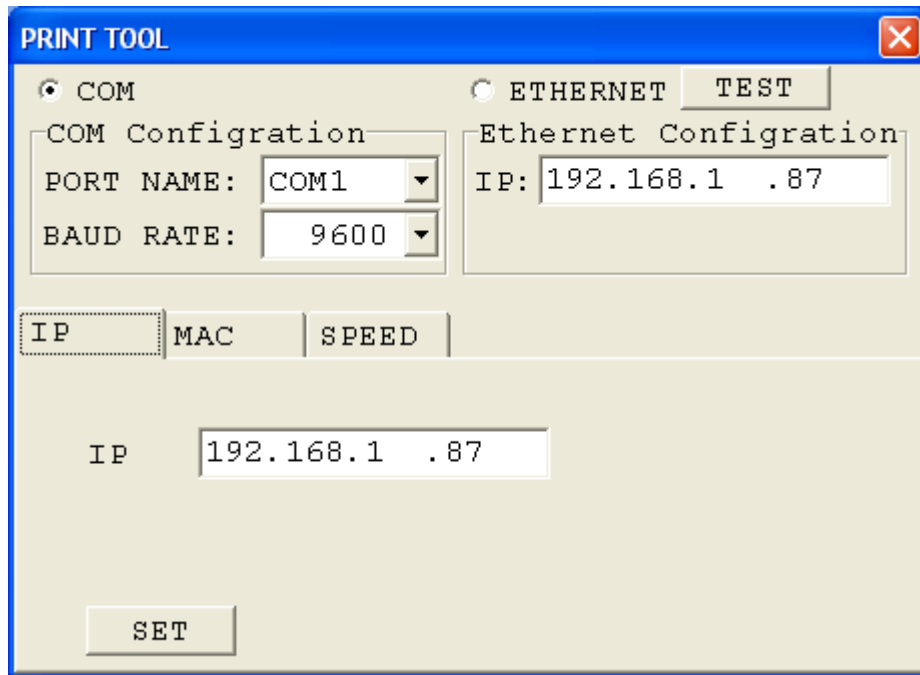
Request timed out.

-
```

RP-58 Ethernet Interface Printer Setup Tool Instructor

Note: it is suitable only for WinNT、Win2000、WinXP、Win2003、WinVista and Win7 Operating System.

1. User could open setup tools from enclosed CD.
(\\RP-58 Driver&Tool\RP-58Tool(IP).exe)
2. Run Ethernet interface printer configuration program RP-58Tool(IP).exe
(see the following picture):



Picture 1

3. Connect the printer to PC, concentrator or Router
4. On picture 1, you can choose Ethernet to revise the IP address of printer:

Select "Ethernet" on picture 1, the default IP "192.168.1.87", click "test", check if the communication is normal, if it is, it will show the ok box

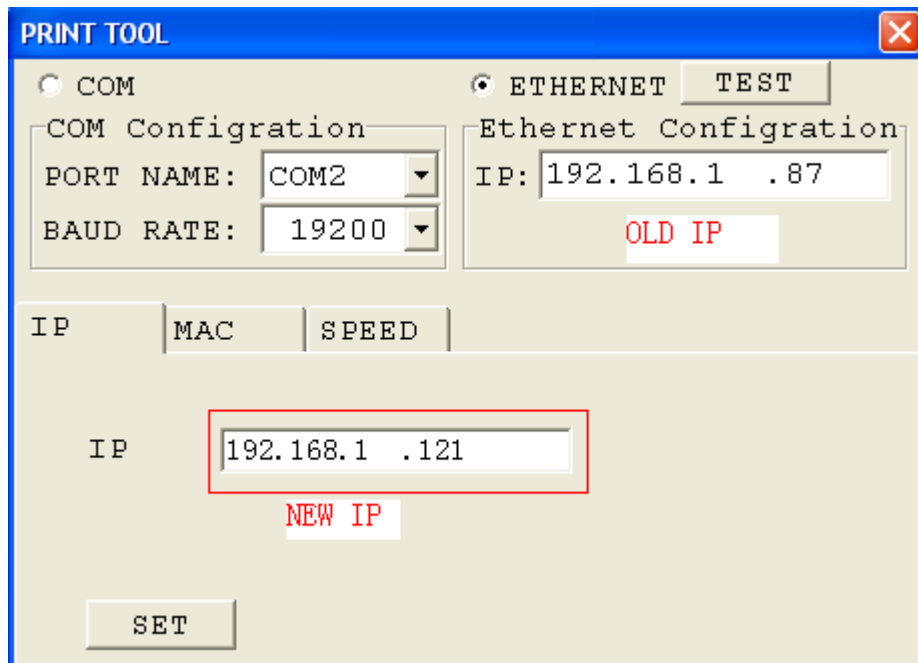


, if not, it will show a error box:



, if error happens,

please check if the line is connected property. After everything goes well, input the new IP on the input box (such as 192.168.1.121)



After finishing inputting new IP, select “set”, and then will show as below box:



5. Check the printer IP address through power-on self-test page.

6. If the printer is connected with PC through Ethernet, please set the IP Address of PC so that the printer' and PC' IP addresses are in the same network segment. For example, if the printer's IP Address is: 192.168.1.87, you need to set the PC's IP Address as 192.168.1.60.

If you did not set up successfully, please check the following items:

A. Is the IP address of PC in the same network segment as printer IP? Note: Need to make PC IP address and printer IP address in the same network segment, so that the PC can be connected with printer successfully.

B. Does the cable that connect PC with printer meet the requirement of network communication?

Note: Direct communication between PC and Printer needs cross line cable. Communication between PC and HUB Or ROUTER, the printers need to be connected to HUB or ROUTER through parallel line. Check the connection through internet cable tester.

C. Testing through “ping” instruction to see if the PC can communicate with printer successfully. Note: In network, the IP address of host computer can not be the same as printer Ethernet interface IP address.

Note: usually the ID address will change as the user revise the IP address, so that every Ethernet printer will have there unique ID address which users don't need to change.

7.Once finding there are same ID addresses during installation, you need to change ID address through printer configuration program RP-58Tool(IP).exe. (Note: MAC address of the RP-58Tool(IP).exe is the ID Address)

Following is the way of changing Printer ID address.

Firstly, connect one of the two printers sharing the same ID address with PC.(Note: Connect only one printer with the PC, the other one will be offline or power off.)

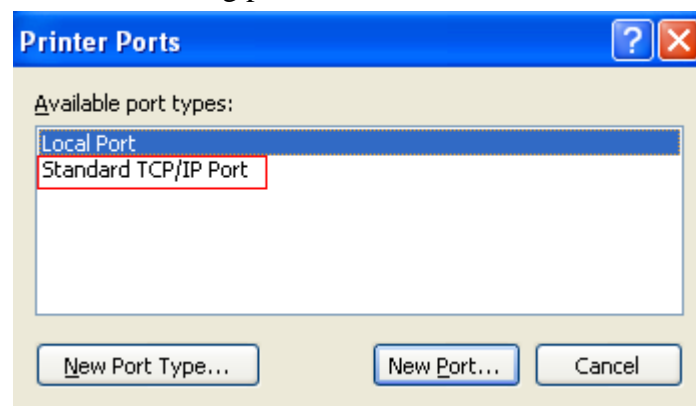
Then,from PrjRP-58.exe input the new ID address on the textbox after “MAC ADDRESS” (Make sure this ID address is different from other ID addresses of printers and PCs). If you want to set the Ethernet ID as “0-164-165-167-168-169”, then input “0-164-165-167-168-169”. And then select “DOWNLOAD”, in this way, the printer ID address (Ethernet ID) will be revised. In printer power-on self-test” page, you can check the printer ID address(Ethernet ID).

Note: after revising the printer ID address (Ethernet ID),user needs to restart PC or forbidden/start using PC network so that PC can connect with printer successfully.

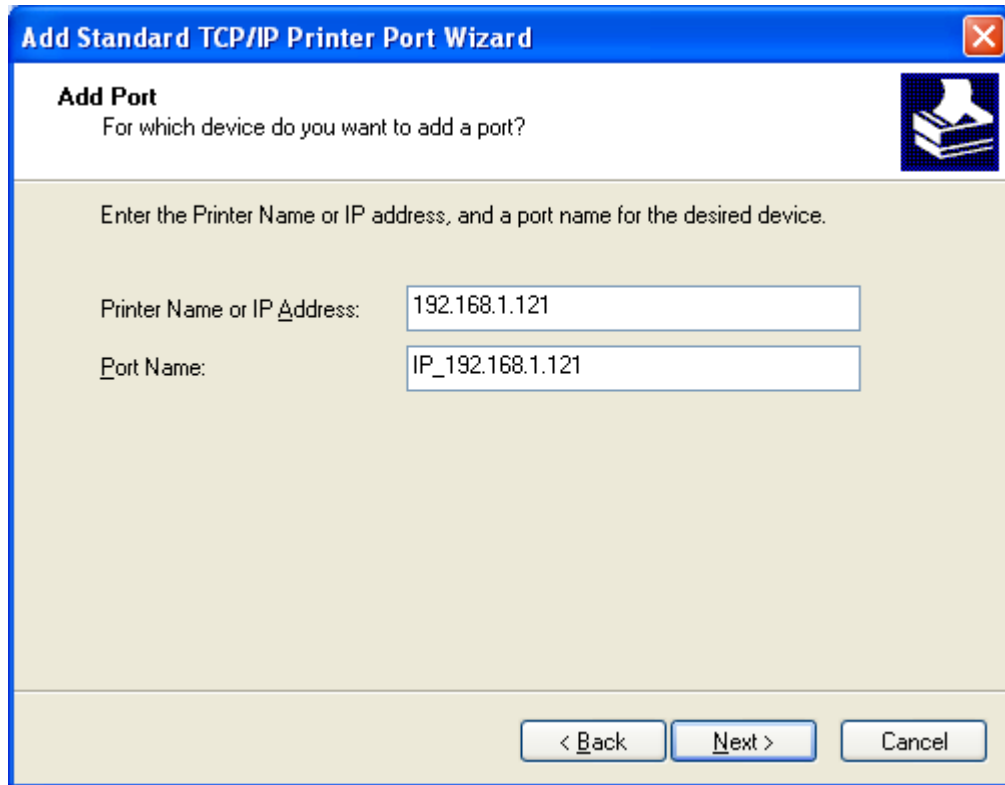
8.After revising the IP address and ID address, users can print the windows testing page through the new IP port.

a.Click "Add Port" → Standard TCP/IP Port→"New Port".

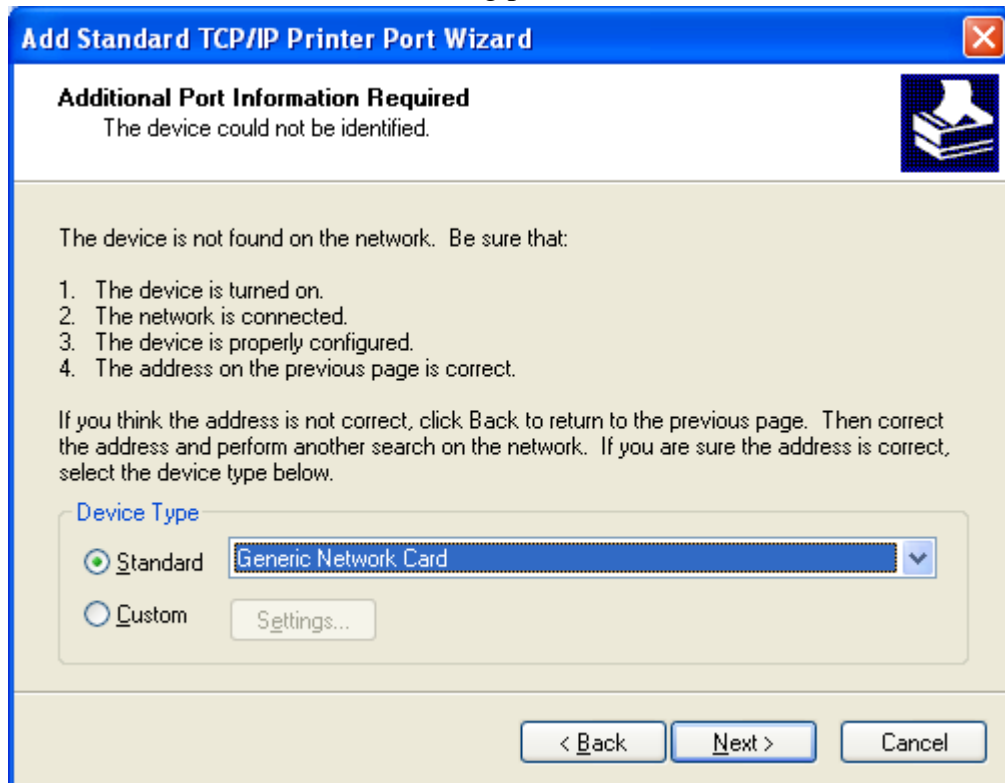
See the following picture.



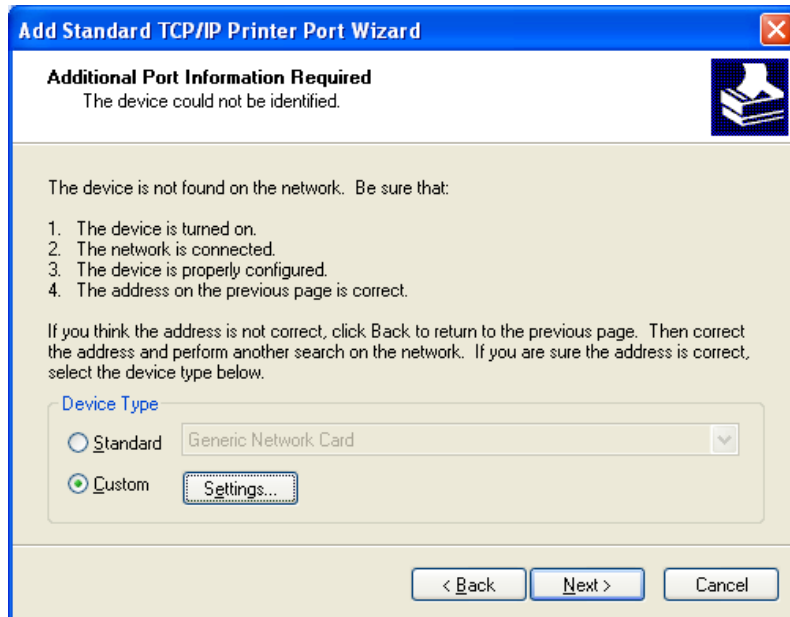
c.If the printer IP address is " 192.168.121", users can follow the "TCP/IP printer ports" and input "192.168.1.121 " after the "Printer Name or IP Address" textbox.



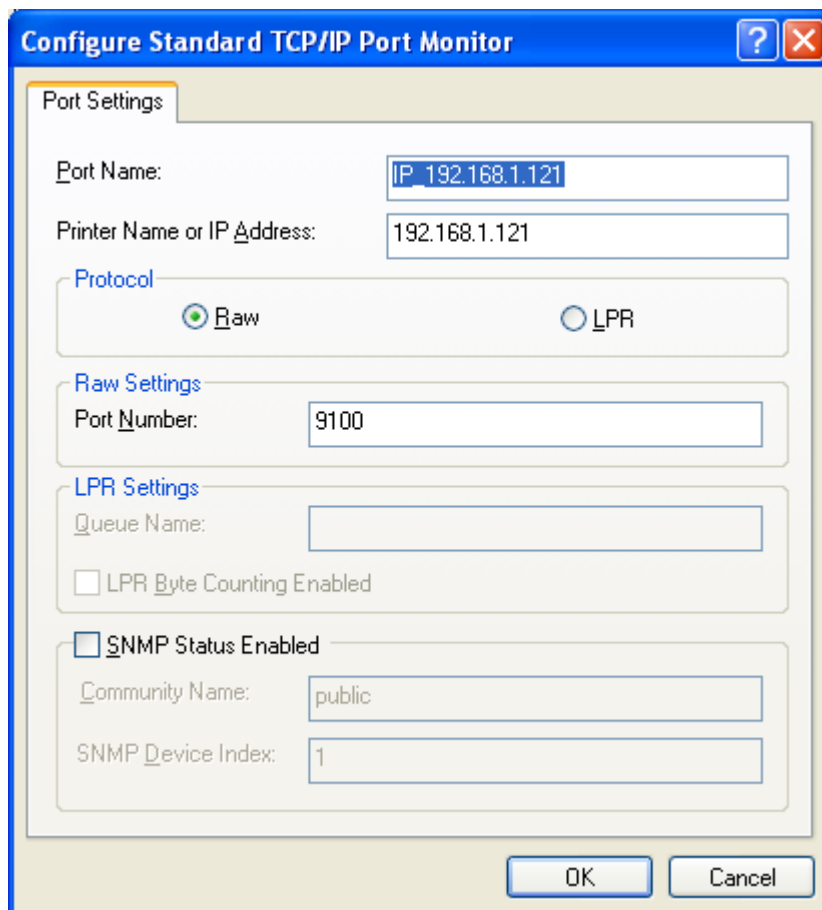
Then click "Next>". See the following picture.



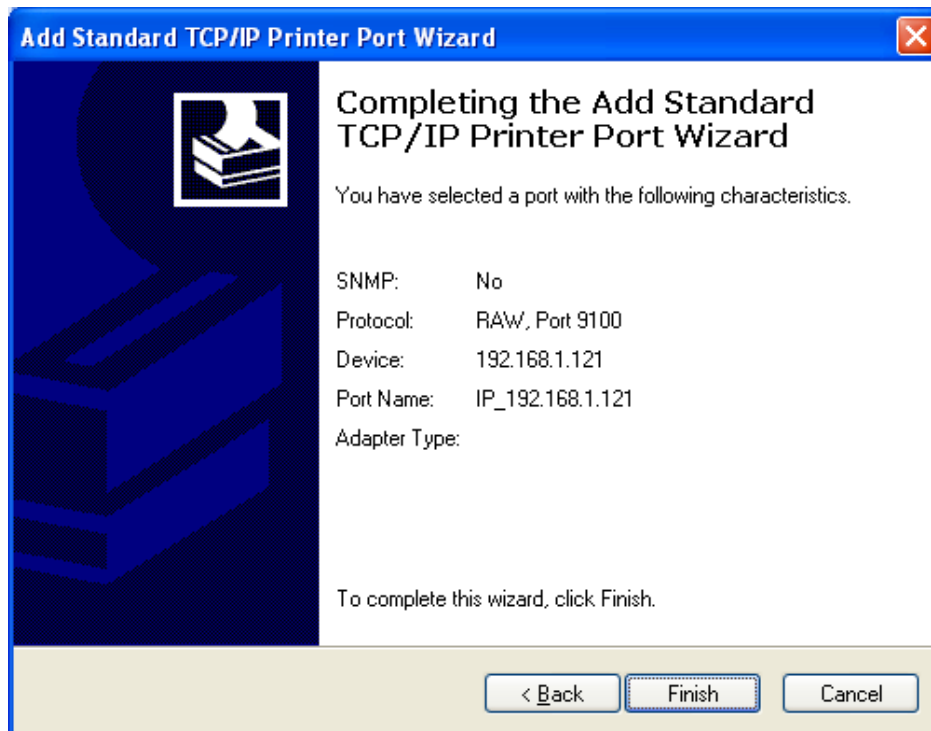
Users need to choose "Custom" option. See the following picture.



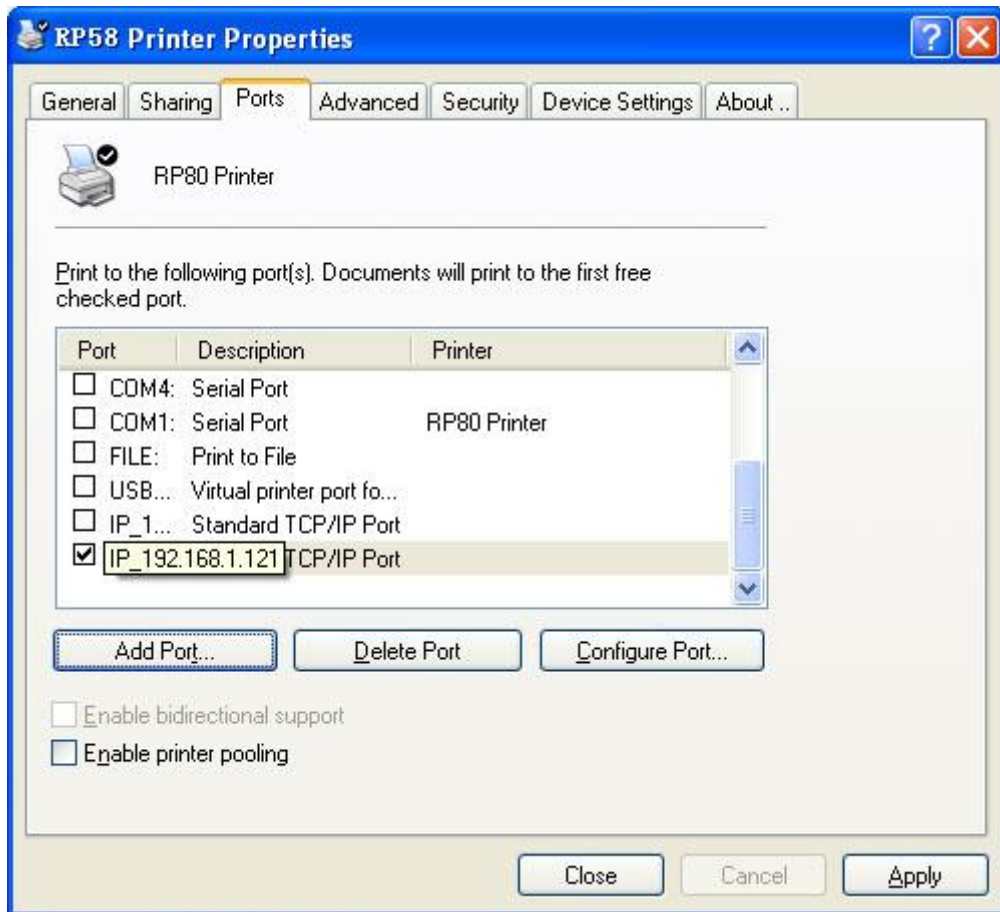
Then click "setting...", see the following picture.



See the above picture, under the IP port name, "Protocol" → "Raw"→ set "Port Number " as 9100→ then click "OK". See the following picture.



Click "Finish" and complete adding "IP_192.168.1.121" printer port to the PC.
b. After completing the add "standard TCP/IP Printer Port wizard",
printer property → "Ports" → choose "IP_192.168.1.121" → Click "apply".
See the following picture.



c.If the printers can print the windows power-on self-test properly, printer is connected with the PC correctly and this Ethernet port is working.