

**Bluetooth Wireless Laser Barcode Scanner**  
**<Operation Manual>**



## **Respected clients:**

Many thanks for choosing us. We hope you take your valuable time to read the user manual before using the barcode reader. Hope this will be a good base for a smooth use. Any enquiries, please contact with us. Thanks.

## **I . Products Features**

- 1.Exquisite and beautiful design, external protected by soft rubber and internal scientific solidification structure, so its drop resistance better than ordinary scanner.
- 2.The latest technical accomplishment is applied to the engine and decoding function, reading codes better and faster than the similar in the market.
- 3.Easy using, easy setting.
- 4.Large capacity, 1.5 times higher than ordinary scanner, it guarantees use longer after fully charged

## **II . Connect Operation For The Bluetooth Barcode Scanner With Android, Iphone, Tablet PC And Other Terminals Which Have Bluetooth Function**

1.press the scanner switch and two beep sound, indicating the power is on. Meantime the blue light is flickering (This means the scanner is waiting for connection with Bluetooth terminals.) After 5 seconds press the switch and open the laser to scan "Bluetooth HID" and "Matching Mode" in turn, open the Bluetooth terminal device to search the laser till "symcode" come out on the computer screen, click "symcode" to connect with Bluetooth and then a beep sound will be heard if successfully matched, meantime the blue light will stop flickering.



Bluetooth HID



Matching Mode

### **\*Functions Features**

- 1.Support Android,Iphone,Tablet PC and PC,support Bluetooth 2.1,3.0,4.0,e.g..
- 2.Under the "Normal Mode" transmit distance is 20~50 meters(Depending on the working environment). If exceed the effective distance or failed to upload the data the barcode scanner will have 2 short beep sound.

3. Self-defined ID, convenient for the user to distinguish the source of data.
4. "Check Mode" easy to use, can storage 10000 barcode.
5. Auto sleep, sleep electricity lower than 10UA, greatly extend the battery standby time.
6. Dedicated charger ensure charging safe.
7. ID Settings Read the "Start ID settings", "ID Parameter Settings" barcode in sequence (eg. Read parameter "0" and "1" barcode, ID settings is "1"), Other ID Settings can be so on.
8. The scanner will automatically connect with the last paired device when re-start.
9. Bluetooth Device can be disconnected or connected with the scanner after successfully paired.
10. The scanner will keep connection with the last connected device when charging.
11. When charging the red light is on indicating the scanner under charging, red light is off indicating full charge (Note: Red light is charge indicator, blue light is Bluetooth connection and reading code indicator.)
12. The scanner will shut down after its switch is pressed for 5 seconds.

### III. IOS System Soft Keyboard Reveal/Conceal



IOS System Soft Keyboard Reveal/Conceal

Note:When using the IOS system,read "IOS System Soft Keyboard Reveal/Conceal" barcode can reveal or conceal the soft keyboard.

## IV. Barcode Settings

### 1.ID Settings



Start ID Settings

### ID Parameter Settings



0



1



2



3



4



5



6



7



8



9

## 2.ID Reveal/Conceal Settings



ID Reveal



ID Conceal

## 3.Sleep Time Settings



Open Time Settings



20 sec



30 sec



60 sec



2 min



5 min



10 min



20 min



No Sleep

#### 4. Work Mode Settings



Normal Mode



Check Mode



Total Data



Data Upload



Clear Data



Continuous Scanning

#### 5. Work Status Shift



Recovery Routine



Wireless Mode

Note: In particular case read the "Recovery Routine", under normal usage please do not read it.

## 6. Capital and Lowercase Letter Shift



Lowercase Letter



Capital Letter



Recover

### \*Barcode Type Settings



Close The ID Before  
Closing The Barcode



Open The ID Before  
Opening The Barcode



Show Barcode Type  
After Barcode



### \*Barcode Type Settings



Close The ID Before  
Closing The Barcode



Open The ID Before  
Opening The Barcode



Show Barcode Type After Barcode



Close The ID After  
The Barcode



Open The ID After  
The Barcode



Do Not Show Barcode  
Type After Barcode

### \*UPC&EAN-Attached Code Settings



Close The Attached  
Code Of UPC & EAN



Add Two Bit Attached  
Code To UPC & EAN



Add Five Bit Attached  
Code To UPC & EAN



Add Two Bit and Five Bit  
Attached Code to UPC & EAN

## \*Enter-Line Skip Settings



Enter



Line Skip



Cancel Enter

## 7.Prefix-Suffix Settings

### a.Add Prefix

Step1.Scan the "Add Prefix" settings code(\*This step will clear the former prefix).



Add Prefix

Step2.Scan the the "Prefix And Suffix Character Barcode" that you want(32 character most).

### **b.Add Suffix**

Step1.Scan the "Add Suffix" settings code(\*This step will clear the former suffix).



Add Suffix

Step2.Scan the the "Prefix And Suffix Character code" that you want(32 character most).

### **c.Conceal Previous Character**

Step1.Scan the "Conceal Previous Character" setup code(\*This step will clear the former setting).



Conceal Previous Character

Step2.Scan the "The Number Of Concealed Characters Barcode" that you need(32 character most).

#### d. Conceal Behind Character

Step1. Scan the "Conceal Behind Character" setup code(\*This step will clear the former setting).



Conceal Behind Character

Step2. Scan the "The Number Of Concealed Characters Barcode" that you need(32 character most).

#### f. Prefix And Suffix Character Code



0



1



2



3



4



5



6



7



8



9



A



B



C



D



E



F



G



H



I



J



K



L



M



N



O



P



Q



R



S



T



U



V



W



X



Y



Z



&amp;



'



(



)



\*



+



!



,



:



;



.



-



&lt;



&gt;



=



/



"



#



?



@



\$



%



[



]



\



~



-



,



{



}



|



~

## g.The Number of Concealed Characters Barcode



01



02



03



04



05



06



07



08



09



10



11



12



13



14



15



16



17





18



19



20



21



22



23



24



25



26



27



28



29



30



31



32

This laser scanner with paired Bluetooth adapter usage(for referred)  
(\* A external bluetooth adapter can be prepared and used as following steps.)  
Note:If don't use the Bluetooth adapter can ignore the follow content.

**\*Bluetooth Adapter have 2 pairing methods on PC.**

- 1.Operation for computer with bluetooth driver.
- 2.Operation for computer without bluetooth driver,need install company native Bluetooth driver optical disc.
- 3.Blutetooth barcode scanner can work under "USB Mode" and "Serial Interface Mode".

## I . Operation For Computer With Bluetooth Driver

### 1.Matching Method Under "USB Mode"


- a.Start the bluetooth barcode scanner,scan the "Bluetooth HID",the scanner enter into USB transfer mode.
- b.Scan the "Matching Mode" barcode,the scanner enter into matching status.



Bluetooth HID



Matching Mode

c. Insert the bluetooth adapter into the computer USB port, the bottom right corner will appear the bluetooth icon "  " .

d. Double click the bluetooth icon.

e. Click the "Add" .

f. Click "Next Step", will find a new device named "Symcode New Device".

g. Click "Symcode New Device" and then click "Next Step".

h. Choose "Not Use The Passkey" and click "Next Step".

i. Click "Complete", the "USB Mode" matching successfully.

## 2. Matching Mode Under "Virtual Serial Interface Mode"

a. Start the bluetooth barcode scanner, scan the "Bluetooth SPP" barcode, the scanner enter into virtual serial Interface transfer mode.

b. Scan the "Matching Mode" barcode, the scanner enter into matching status.



Bluetooth SPP



Matching Mode

The new devices "Symcode" indicate the bluetooth code scanner already matched successfully under the "USB Mode" and "Virtual Serial Interface Mode",if the bluetooth barcode scanner don't connect with other devices then this scanner can switch use under the "USB Mode"and "Virtual Serial Interface Mode",no need match again.

Note:if you want to use the "USB Mode" and "Virtual Serial Interface Mode" at the same time,pls connect the bluetooth "Virtual Serial Interface Mode" first and then connect the "USB Mode",now the interface will appear 2 successfully connected icon "Symcode".

Use the bluetooth barcode scanner under the "USB Mode" then scan the "Bluetooth HID" barcode.

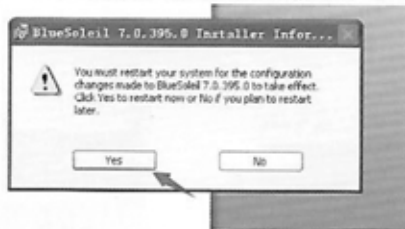
Use the bluetooth barcode scanner under the "Virtual Serial Interface Mode" then scan the "Bluetooth SPP" barcode.

## **II. Operation For Computer Without Bluetooth Driver,Need Install Company Native Bluetooth Driver Optical Disc**

### **A.Match Method Under "USB Mode"**

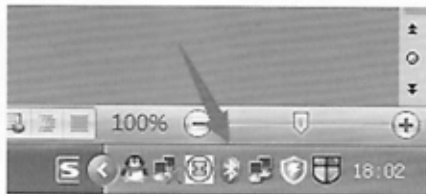
- 1.Insert the bluetooth adapter into the USB port,open the optical disc,double click the "setup.exe" icon.
- 2.Choose "English(USA)" install.

3. Installation complete will appear the interface as shown below,click "Yes" restart the computer.



Picture(3)

4. After restart the computer, double click the bluetooth icon on the bottom right screen will appear "Picture(5)" operation interface.



Picture(4)

5. Now read the "Bluetooth HID" and "Match Settings" barcode in sequence, then double click the ball icon to search the bluetooth will appear "Picture(7)" operation interface.



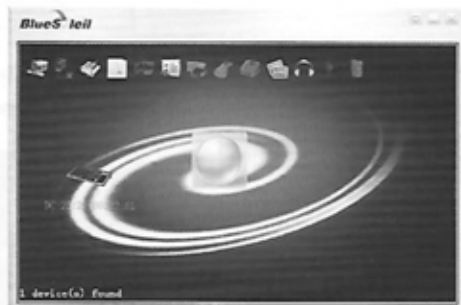
Bluetooth HID



Match Settings



Picture(5)



Picture(6)

6.Right click the DC:2C:26:00:22:01 icon,click "Search Service" will appear "Picture(8)" operation interface.



Picture(7)



Picture(8)

7.Right click "Symcode" icon in "Picture(8)" will appear "Picture(9)" operation interface,click "Pair" will appear "Picture(10)" operation interface.



Picture(9)



Picture(10)

8.Right click "Symcode" icon in "Picture(10)" will appear "Picture(11)" operation interface,click "Connect Bluetooth Human Interface Device" connect the bluetooth,connect successfully will appear "Picture(12)" operation interface, now bluetooth connect successfully can read the barcode.





Picture(12)  
Bluetooth Connect Successfully

## B.Match Mode Under “Virtual Serial Interface Mode”

1. Software install successfully, the previous operation same as “Match Mode Under ‘USB’ Mode” Step1 to Step4, now read the “Bluetooth SPP” and “Match Mode” barcode, then double click ball icon to search the bluetooth will appear “Picture(2)” operation interface.



Bluetooth SPP



Match Mode



Picture(1)



Picture(2)

2.Right click the DC:2C:26:00:22:01 icon,click "Search Service" will appear "Picture(4)" operation interface.



Picture(3)



Picture(4)

4.Right click "Symcode" icon in "Picture(4)" will appear "Picture(5)" operation interface,click "Pair" will appear "Picture(6)" operation interface.



Picture(5)



Picture(6)

4. Enter the password "1234" in "Picture(6)" dialogs, then click "OK" will appear "Picture(7)" dialogs.



Picture(7)

5. Right click "Symcode" icon in "Picture(7)" will appear "Picture(8)" operation interface, click "Connect Bluetooth Human Interface Device" connect the bluetooth, connect successfully will appear "Picture(9)" operation interface, now bluetooth virtual serial interface is connecting and successfully can read the barcode.



Picture(8)



Virtual Serial Interface Connect Successfully

Note: There is no need for re-pair again for the well-connected bluetooth devices, as long as it is not paired with other terminal devices.

### C. Use The Bluetooth “Virtual Serial Interface Mode” and “USB Mode” At The Same Time

If the user want to use the “USB Mode” and the “Virtual Serial Interface Mode” at the same time, please connect the “Virtual Serial Interface Mode” first then connect the bluetooth “USB Mode”, now the interface will appear 2 successfully connected icon as shown in “Picture(10)”. If the user want to use the bluetooth barcode scanner under the “USB Mode” scan the “Bluetooth HID” barcode right click the icon, and then click the “Connect Bluetooth Human Interface Device” connect; if the user want to use the bluetooth barcode scanner under the “Virtual Serial Interface Mode” scan the “Bluetooth SPP” barcode right click the icon, and then click the “Connect Bluetooth Human Interface Device” connect.



Bluetooth HID



Bluetooth SPP



Picture(10)

## V. Performance Parameters

Light Source Type: Visual lasing diode; the wave length is 650nm.

Trigger Mode: Manual

Scanning Mode: Single-line scanning

Scanning speed:  $100 \pm 2$  times /s

Resolution:  $\geq 4$ mil

Printing Contrast Ratio: The lowest reflectivity difference is 30%.

Bit error rate: 1/5million

Input voltage:  $5\text{VDC} \pm 0.25\text{V}$

Power: 100mW (Work); 400mW (momentary maximum)

Current: 20mA (Work); 100mA (momentary maximum)



Standby current: <20mA

Light intensity:3000-12000Lux

Depth of field:5mm-630mm

Scanning angle:±60°±65°±42° (Left and right, front and back, rotation)

Decoding capacity:UPC/EAN/JAN, UPC/EAN with Supplemental, UCC/EAN 128, Code 39, MSI, Code11,Code 39 Full ASCII, Code 39 TriOptic, Code 128, Code 128Full

ASCII,Codabar,international general dimensional barcodes, e.g. Inteleaved2/5, Interleaved2of5,China postal service code and so on

Promotion mode:Buzzer and LED indicator

Cable interface:USB (standard): PS/2 and RS232 are selectable.

External dimensions:L\*W\*H 158mm\*68mm\*96mm

Weight:250g

Cable standard:Straight line, 1m(USB charging line,red light under charging,turn blue indicate battery full charge)

Interface type:RJ-45 crystal head

Hull material:ABS+PC

Temperature:0°C to 50°C (Work);-40°C to 60°C (storage)

Setting mode:Manul(scanning and setting barcodes according to the sequence)

Laser safety class: EN60825-1, Class 1, state level-I laser safety

EMC Compatibility: EN55022,EN55024

Electrical safety:EN60950-1

Packaging level:IP52

Anti-seismic capacity:The scanner can still work properly after falling down and being impacted on the concrete floor from the height of 2m for many times.

## Appendix

Accessory Name	Quantity
Scanner	1pc
U Form Adapter,Driver CD	1pc each
USB Charge Line	1pc
Manual	1pc

## **About the Warranty**

1. Since you buy our product with this card, you can enjoy the service of one year repair and lifelong maintenance for the rubber and plastic parts of the barcode scanner, 6 months repair service for the battery and the charger, and 3 months repair service for the data cable. During the repair period, the maintenance of the product is free. Expire the warranty, we will charge the replaced components and maintenance cost;

2. If the product belongs to one of the below situations and verified by manufacturer, the user can't enjoy the free maintenance service:

a. Expire the warranty period;

b. The barcode scanner body is disassembled or the camera of the scanner is damaged;

c. The surface or internal component of the scanner is seriously damaged;

d. The product is damaged due to the wrong installation or operation;

e. The serial number of the scanner is altered or does not conform to the number written on the card.

f. The scanner is damaged due to an artificial fault. For instance, it is inundate.

g. The scanner is damaged due to natural disasters, e.g. fire disaster, flood and thunder stroke.

h. The working or storage environment of the product, e.g. temperature or humidity, does not conform to the requirements in Operation Manual.

**Thank You For Choosing Our Products!**