

Ultra compact Series

2U Ultra compact Rackmount / Desktop chassis KI-N238A Depth=380mm



Introduction

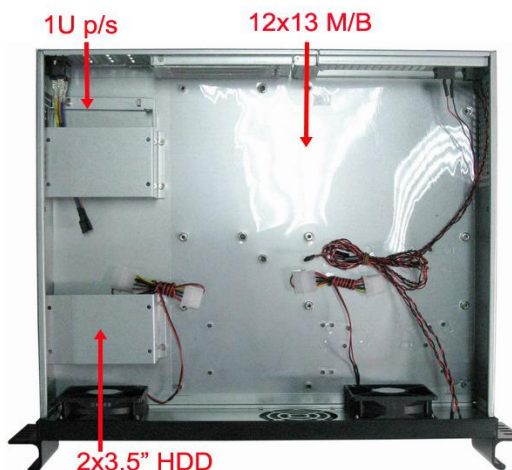
KI-N238A is a very compact chassis for Max to 12 "x13" M/B

Cooling is essential as so many use 2U as small servers



Features and Benefits

- High density server chassis, depth=380 for 12 "x13" M/B
- Industrial grade aluminum front bezel.(customer demand change color)



Specification

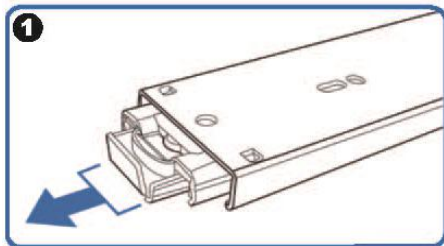
Dimension (W*H*D)	19"*3.5"*15"/ 482*88.8*380 (mm)
Material Construction	Heavy-duty & Rugged steel 1.0mm
M/B Size	EEB (12"X13")
Expansion	support low profile and riser card together
Control & Indicator	1*Power switch +1* Reset switch 1 x LED(power) +2 x LED(HDD) 2*3.0 USB or 2*3.0 USB(option)
Cooling Fans	2 x 8025 fan in take
DriveBay	4 x 3.5" (For 12"x9.6" ATX M/B) as Original 2 x 3.5" (For 12"x13" EEB M/B)
Power Supply	1U single powersupply
Sliding rail	18" ball bearing sliding rail (option)
Color	Black / Red / Bule / Green / Silver
Operation Temperature	Up to 50C (122°F)
Operation Humidity (Non-condensing)	Up to 90%
Packing Measurement CBF / CBM	2.4/ 0.07
Packing N.W / G.W	5.0KGS / 6.5KGS

Option: Three-Sections Heavy-Duty Solid Ball-Bearing Sliding Rails

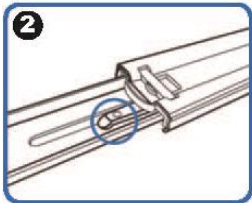
Model: RB18

Features: Universal Design to match almost all chassis on market, Heavy-Duty Slide Ball Bearing
Built-in stop-latch, lock chassis in extended position for easy access ,
Simply pressing on the plastic levers on each side and slide your case back into the cabinet

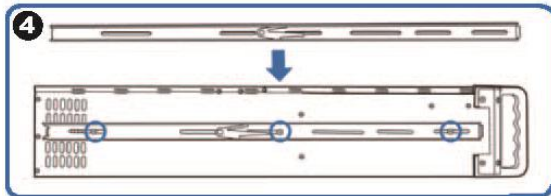
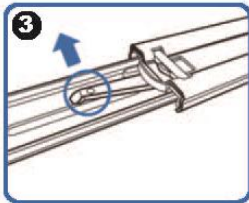
Warranty: 1 Year



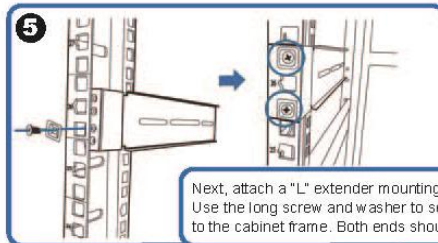
(Pull the center slide all the way out until it reaches the end)



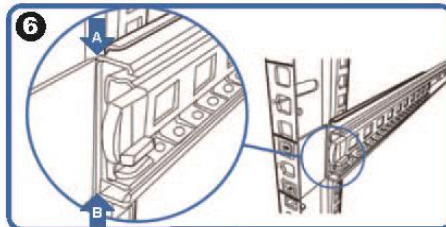
You will see a locking clip at the end point of the center slide. Push it down and unlock the center slide.



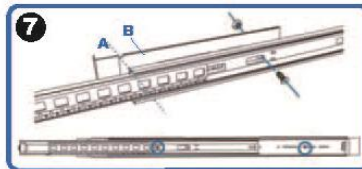
Now put the center slide right next to the rackmount chassis. You should be able to find screw holes on both sides of chassis. Holes are used for mounting the center slide. Later the center slide will be use for attaching the sliding rail.



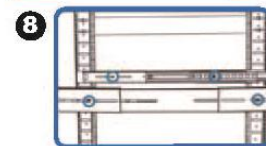
Next, attach a "L" extender mounting bracket on to the cabinet. Use the long screw and washer to secure the "L" extender bracket on to the cabinet frame. Both ends should have the extender bracket.



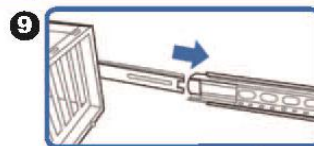
Align front outer rail to the indent of L bracket between Point A & B.



Secure outer rail to L bracket with crews and nuts.



Repeat previous steps to secure sliding rails on both sides.



Reattach inner rail back to center rail.