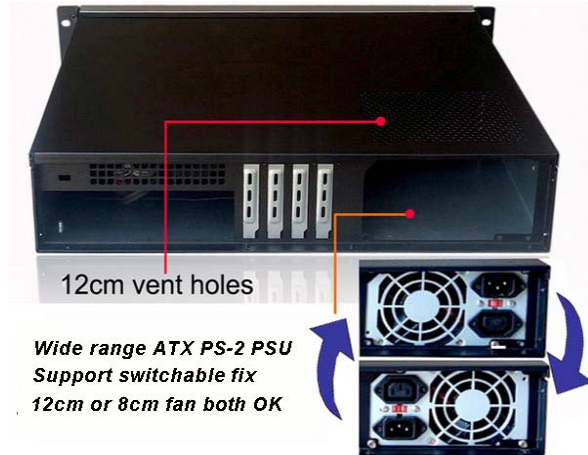


BUY ON

[www.cablematic.com](http://www.cablematic.com)



Fans intake fresh air from hidden vent hole



12cm vent holes

Wide range ATX PS-2 PSU  
Support switchable fix  
12cm or 8cm fan both OK

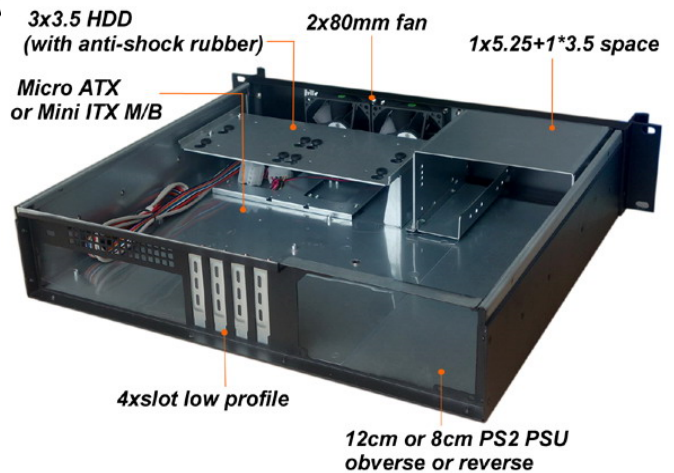
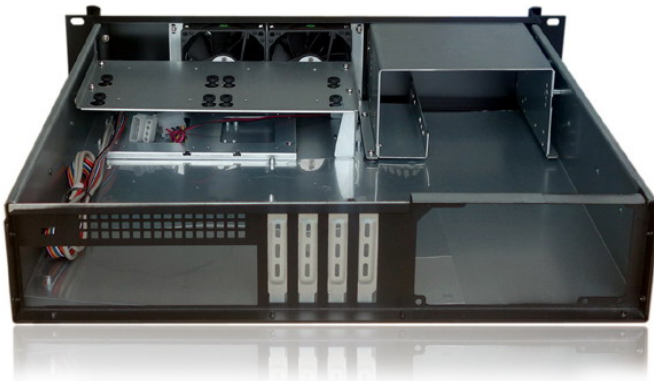
### Introduction

Is a ultra compact chassis with 15.7" depth ,1x CDRom space for wide range application like fan control or hotswap device +4x3.5" HDD

Support ATX PS2 powersupply for regular server, as the chassis depth is compact,so install into a wall-mount rack if need be or even be used as an HTPC/Desktop case

### Features and Benefits

- Easy release handles change to desktop chassis
- High density chassis support Micro ATX / Mini ITX Motherboard and PS2 ATX Powersupply
- With unique industrial aluminum front door (hidden vent holes)



3x3.5 HDD  
(with anti-shock rubber)

2x80mm fan

1x5.25+1x3.5 space

Micro ATX  
or Mini ITX M/B

4xslot low profile

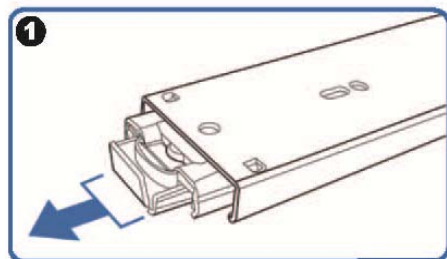
12cm or 8cm PS2 PSU  
obverse or reverse

### Specification

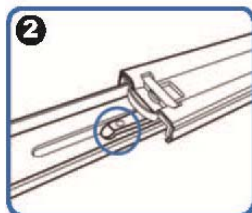
Dimension (W*H*D)	19"*3.5"*15.7"/ 482*88.8*400 (mm)
Material Construction	Heavy-duty & Rugged steel 1.0mm+Aluminum front panel
M/B Size	Micro ATX / Mini ITX
Expansion	4 slots low profile add on card 1*Power switch +1* Reset switch
Control & Indicator	1 x LED(power) +2 x LED(HDD) 2*2.0 USB
Cooling Fans	2 x 8025 fan in take
DriveBay	4 x 3.5"(Internal)+1 x 5.25"
Power Supply	PS-2 ATX powersupply(top 12cm fan or rear 80 fan both OK)
Sliding rail	18" ball bearing sliding rail (option)
3-speed Fan controller	Optional
Color	Black / Red / Bule / Green / Silver
Operation Temperature	Up to 50C (122°F)
Operation Humidity (Non-condensing)	Up to 90%

### Option: Three-Sections Heavy-Duty Solid Ball-Bearing Sliding Rails

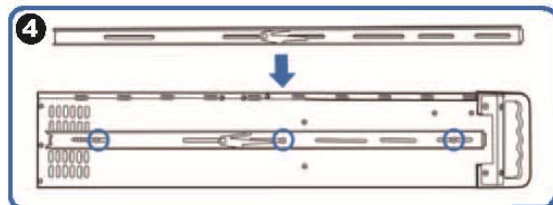
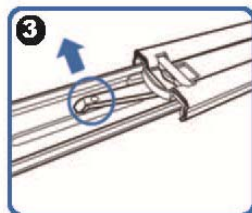
Features: Universal Design to match almost all chassis on market, Heavy-Duty Slide Ball Bearing  
Built-in stop-latch, lock chassis in extended position for easy access ,  
Simply pressing on the plastic levers on each side and slide your case back into the cabinet  
Warranty: 1 Year



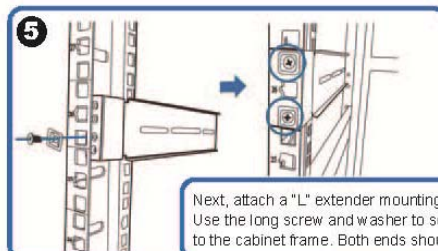
(Pull the center slide all the way out until it reaches the end)



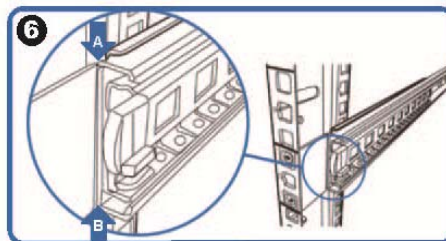
You will see a locking clip at the end point of the center slide. Push it down and unlock the center slide.



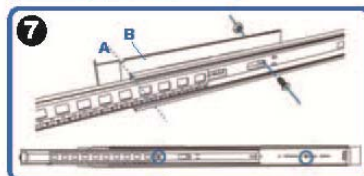
Now put the center slide right next to the rackmount chassis. You should be able to find screw holes on both sides of chassis. Holes are used for mounting the center slide. Later the center slide will be used for attaching the sliding rail.



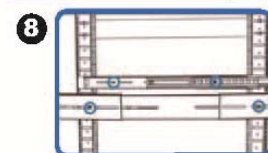
Next, attach a "L" extender mounting bracket on to the cabinet. Use the long screw and washer to secure the "L" extender bracket on to the cabinet frame. Both ends should have the extender bracket.



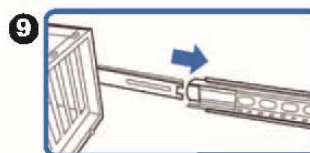
Align front outer rail to the indent of L bracket between Point A & B.



Secure outer rail to L bracket with crews and nuts.



Repeat previous steps to secure sliding rails on both sides.



Reattach inner rail back to center rail.