



Cablematic



Introduction

3U Cost-Effective Industrial Server Chassis

Chassis is an affordable entry-level IPC in 15.3" depth.

Supports ATX motherboard, PS/2 power supply, configurable drive bays and fan filter.

It's an ideal choice for cost-conscious small to medium businesses.

Features and Benefits

- ▶ Industrial chassis for 12"x9.6" M/B
- ▶ 2*5.25"+1*3.5"(External)+6*3.5"(Internal)
- ▶ Aluminum Alloy front door, both are lockable, Air filter are Removable & Washable
- ▶ Front access USB2.0*1
- ▶ Standard I/O shield
- ▶ Standard PS-2 ATX
- ▶ Power and HDD LED



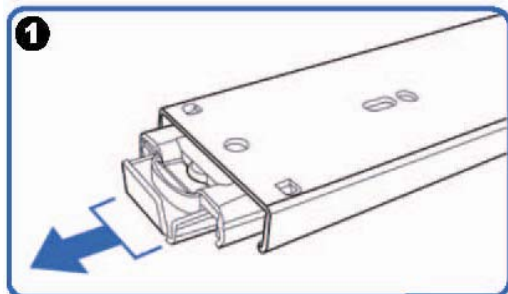
Specification

Dimension (W*H*D)	19" x 5.25" x 15" / 482 x 133.3 x 390 (mm)
Material Construction	Heavy-duty & Rugged Steel 1.0mm Front panel aluminum 3.0mm
M/B Size	ATX (12"x9.6")
Expansion	4 slots low profile
Control & Indicator	1*Power switch + 1* Reset switch
	1 x LED (power) + 1 x LED (HDD)
	1*2.0 USB
Cooling Fans	2 x 8cm Fan + 2 x 6cm fan (Option)
DriveBay	2*5.25"+1*3.5"(External)+6*3.5"(Internal)

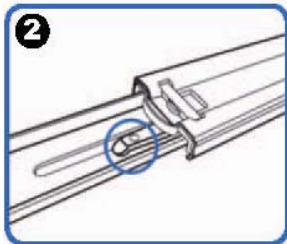
Power Supply	Standard PS-2 ATX or PS-2 size Mini-Redundant
	Power supply 300w~550w
Sliding rail	18" ball bearing sliding rail (option)
Color	Black / Red / Blue / Green / Silver
Operation Temperature	Up to 50C (122°F)
Operation Humidity (Non-condensing)	Up to 90%
Packing Measurement CBF / CBM	2.1 / 0.059
Packing N.W / G.W	9.0KGS /11.0KGS

Option: Three-Sections Heavy-Duty Solid Ball-Bearing Sliding Rails

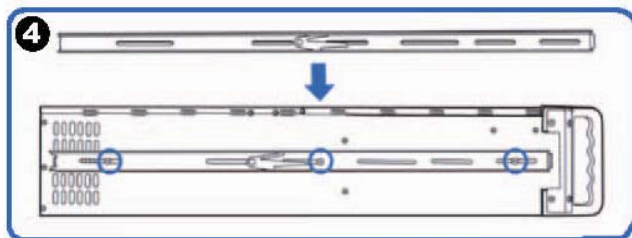
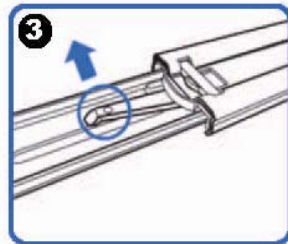
Features: Universal Design to match almost all chassis on market, Heavy-Duty Slide Ball Bearing
 Built-in stop-latch, lock chassis in extended position for easy access ,
 Simply pressing on the plastic levers on each side and slide your case back into the cabinet
 Warranty: 1 Year



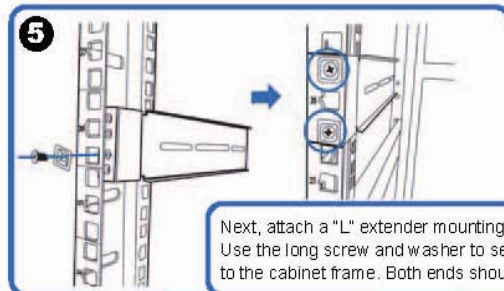
(Pull the center slide all the way out until it reaches the end)



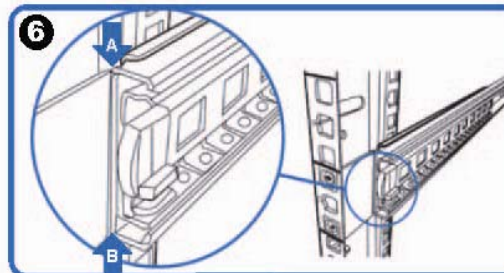
You will see a locking clip at the end point of the center slide. Push it down and unlock the center slide.



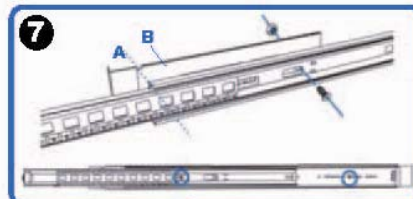
Now put the center slide right next to the rackmount chassis. You should be able to find screw holes on both sides of chassis. Holes are used for mounting the center slide. Later the center slide will be use for attaching the sliding rail.



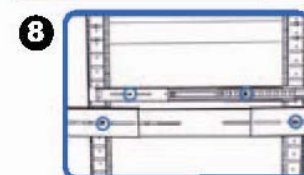
Next, attach a "L" extender mounting bracket on to the cabinet. Use the long screw and washer to secure the "L" extender bracket or to the cabinet frame. Both ends should have the extender bracket.



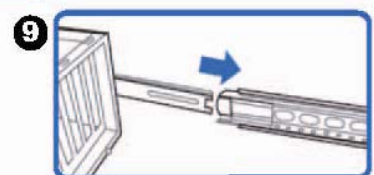
Align front outer rail to the indent of L bracket between Point A & B.



Secure outer rail to L bracket with crews and nuts.



Repeat previous steps to secure sliding rails on both sides.



Reattach inner rail back to center rail.