



**Most popular 4u chassis!**

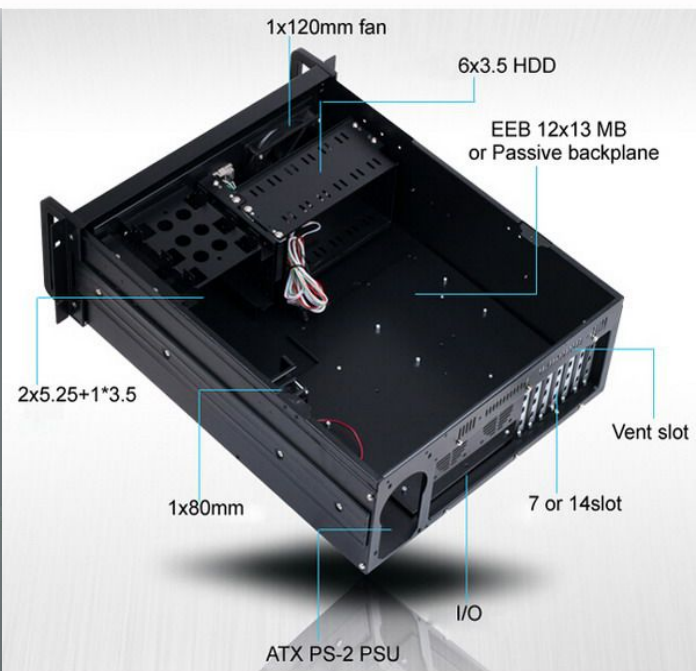
**Introduction**

Is a entry-level server chassis, Fit with EATX main board size performs the most efficient solution,depth=530mm.

KI-N406L is simple design and easy assembly & maintenance

**Features and Benefits**

- ▶ Support EATX 12"\*13" M/B and Passive backplane 14slot
- ▶ With Unique outward appearance design
- ▶ Anti-Shock 2\*5.25"+8\*3.5" Drive space / Easy assembly
- ▶ Front access USB2.0\*2+Lockable door
- ▶ Removable air filter



**Specification**

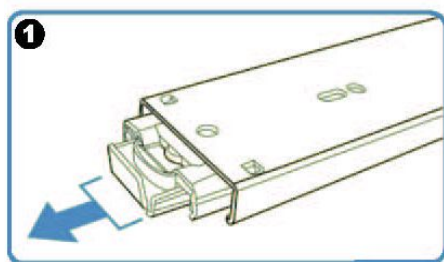
|                       |  |
|-----------------------|--|
| Dimension (W*H*D)     | 19" x 7" x 20.87" / 482 x 177 x 530mm                |
| Material Construction | Heavy-duty and anti-rusty SECC steel,thickness:1.0mm |
| M/B Size              | 12" x 13" or passive backplane 14slot                |
| Expansion             | 7 slots rear side ATX or 14slot                      |

|                                     |  |
|-------------------------------------|--|
| Control & Indicator                 | 1*Power switch +1* Reset switch<br>1 x LED (power) +1 x LED (HDD)<br>2*2.0 USB |
| Cooling Fans                        | 1*12cm Fan in front+1*6cm in middle+2*6cm at rear or topcover (option)         |
| DriveBay                            | 2 x 5.25" + 8 x 3.5" (internal)  |
| Power Supply                        | Standard PS-2 ATX or PS-2 size Mini-Redundant<br>Power supply 300w~550w        |
| Sliding rail                        | 26" ball bearing sliding rail (option)   |
| Color                               | Black / Beige  |
| Operation Temperature               | Up to 50C (122°F)  |
| Operation Humidity (Non-condensing) | Up to 90%  |
| Packing Measurement<br>CBF / CBM    | 3.0 / 0.085  |
| Packing N.W / G.W                   | 12.0KGS /14.0KGS   |

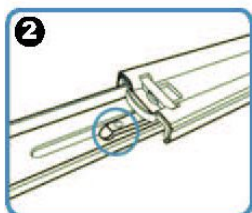
**Option: Three-Sections Heavy-Duty Solid Ball-Bearing Sliding Rails**

Model: RB26

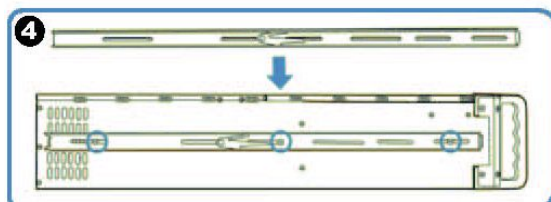
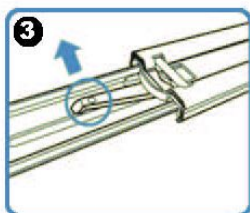
Features: Universal Design to match almost all chassis on market, Heavy-Duty Slide Ball Bearing  
Built-in stop-latch, lock chassis in extended position for easy access ,  
Simply pressing on the plastic levers on each side and slide your case back into the cabinet



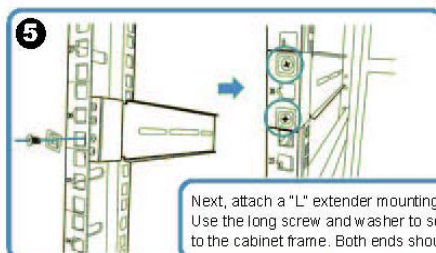
(Pull the center slide all the way out until it reaches the end)



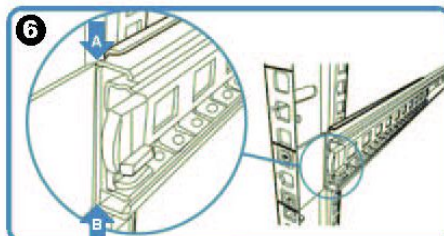
You will see a locking clip at the end point of the center slide. Push it down and unlock the center slide.



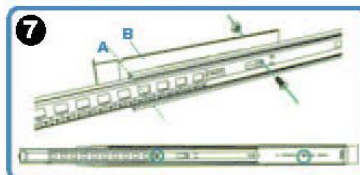
Now put the center slide right next to the rackmount chassis. You should be able to find screw holes on both sides of chassis. Holes are used for mounting the center slide. Later the center slide will be use for attaching the sliding rail.



Next, attach a "L" extender mounting bracket on to the cabinet. Use the long screw and washer to secure the "L" extender bracket on to the cabinet frame. Both ends should have the extender bracket.



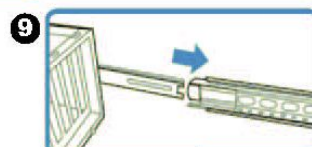
Align front outer rail to the indent of L bracket between Point A & B.



Secure outer rail to L bracket with crews and nuts.



Repeat previous steps to secure sliding rails on both sides.



Reattach inner rail back to center rail.