

Industrial PC series



4U Compact Server Rackmount Chassis



Introduction

KI-N439L-1 is a compact chassis, Fit with standard E-ATX main board size performs the most efficient solution, depth=390mm.

KI-N439L-1 is simple design and easy assembly &

Features and Benefits

- ▶ Compact 4U chassis with 15.35" depth
- ▶ Anti-Shock 5*3.5" Drive space / Easy assembly
- ▶ Front access USB2.0 or USB3.0*2
- ▶ Aluminum front panel+handles



Specification

Dimension (W*H*D)	19" x 7"x 15.35"/ 482 x 177 x 390mm
Material Construction	Heavy-duty and anti-rusty SECC steel,thickness:1.0mm
M/B Size	EATX (12"x13") Max
Expansion	7 slots rear side ATX or 14slot 1*Power switch +1* Reset switch
Control & Indicator	1 x LED (power) +1 x LED (HDD) 2*3.0 USB
Cooling Fans	1*12cm Fan in front+2*6cm at rear (option)
DriveBay	5 x 3.5" (internal)
Power Supply	Standard PS-2 ATX
Sliding rail	18" ball bearing sliding rail (option)
Color	Black / Beige
Operation Temperature	Up to 50C (122°F)

Operation Humidity (Non-condensing) Up to 90%

Packing Measurement CBF / CBM 2.6 / 0.07

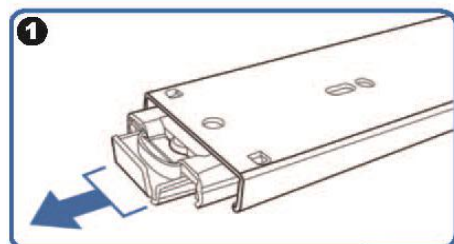
Packing N.W / G.W 8KGS /10KGS

Option: Three-Sections Heavy-Duty Solid Ball-Bearing Sliding Rails

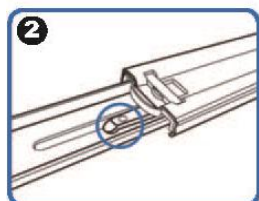
Model: RB18

Features: Universal Design to match almost all chassis on market, Heavy-Duty Slide Ball Bearing
Built-in stop-latch, lock chassis in extended position for easy access ,
Simply pressing on the plastic levers on each side and slide your case back into the cabinet

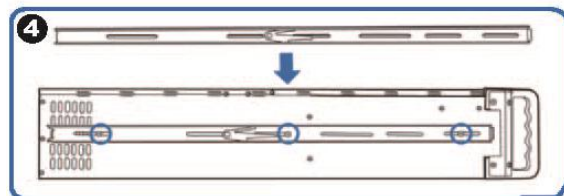
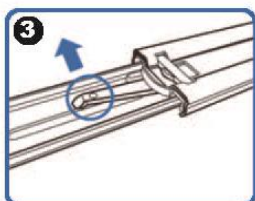
Warranty: 1 Year



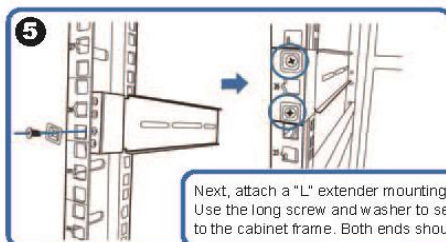
(Pull the center slide all the way out until it reaches the end)



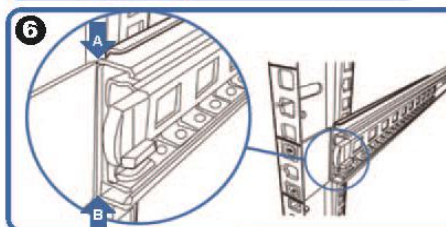
You will see a locking clip at the end point of the center slide. Push it down and unlock the center slide.



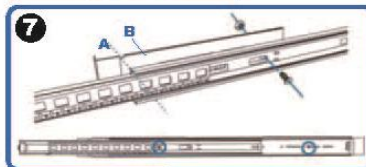
Now put the center slide right next to the rackmount chassis. You should be able to find screw holes on both sides of chassis. Holes are used for mounting the center slide. Later the center slide will be use for attaching the sliding rail.



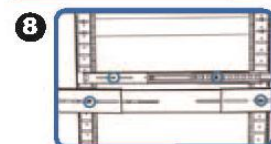
Next, attach a "L" extender mounting bracket on to the cabinet. Use the long screw and washer to secure the "L" extender bracket on to the cabinet frame. Both ends should have the extender bracket.



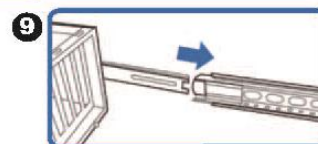
Align front outer rail to the indent of L bracket between Point A & B.



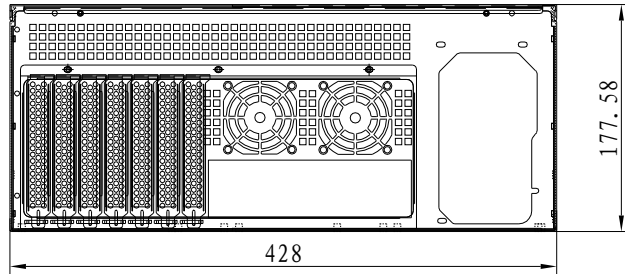
Secure outer rail to L bracket with crews and nuts.



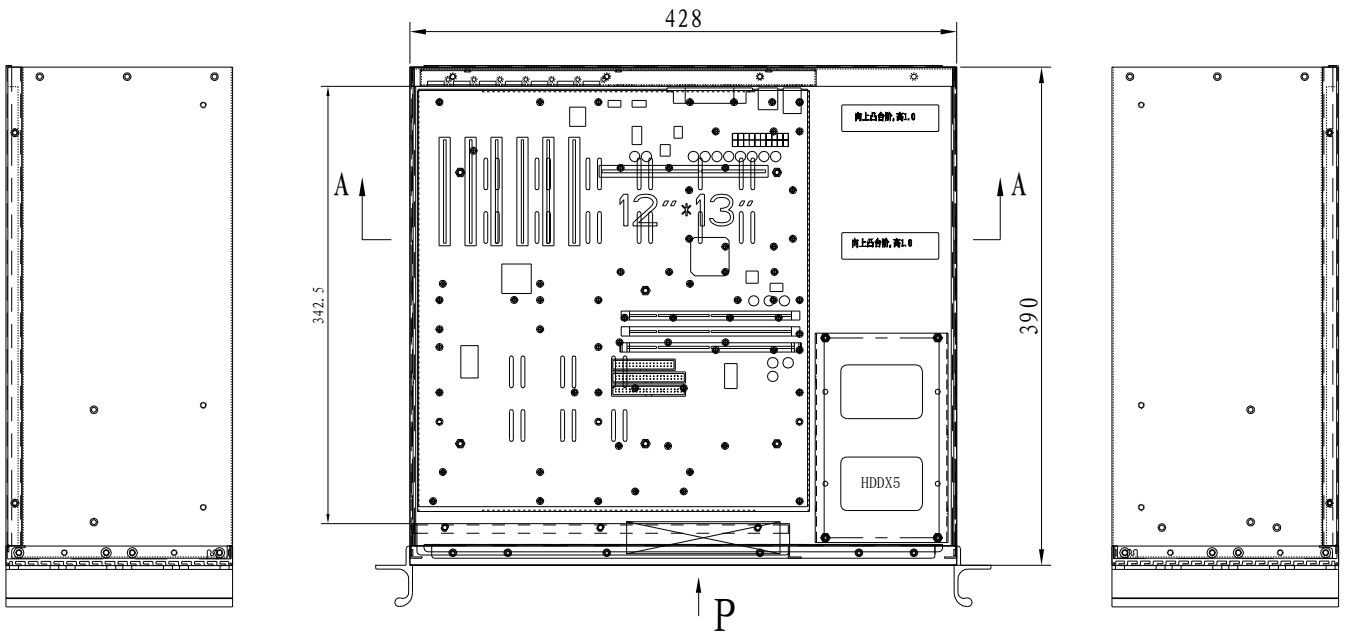
Repeat previous steps to secure sliding rails on both sides.



Reattach inner rail back to center rail.



A-A



P向