

KI-B9ITX

5U mini-itx blade chassis



Introduction

The industrial level 5U rackmount chassis, ideal economic solution for cloud computer, Support 9*Mini-itx blade depth=550mm, Each blade support 2*3.5 or 4*2.5, support high-efficiency 1U flex PSU.



Features and Benefits

- ▶ Encomic blade chassis support 9*Mini-itx system
- ▶ Best cooling for each blade with 4*4cm fan
- ▶ Easy maintain with I/O infront

Specification

Dimension (W*H*D)	19" x 5U x 21.65"/ 482 x 222.5 x 550 (mm)
Material Construction	Heavy-duty & Rugged steel 1.2mm
Expansion	N/A
M/B Size	17cm x 17cm (Atom Mini-ITX)
Control & Indicator	1x Power switch +1x Reset switch / each blade 1 x LED (power) +1 x LED (HDD) / each blade
Cooling Fans	4 x 40mm Fan /each blade

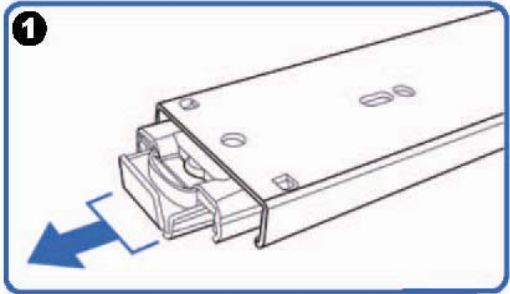
DriveBay	2x 3.5" or 4x 2.5"(Internal) / each blade
Power Supply	High efficiency 1U Flex P/S 200w(max 250w)(option) / each blade
Sliding rail	RB26 can use max to 3 set for one case as the case is very heavy
Color	Black
Operation Temperature	Up to 50C (122°F)
Operation Humidity (Non-condensing)	Up to 90%
Packing Measurement CBF / CBM	5 / 0.15 (double carton)
Packing N.W / G.W	40KGS / 45KGS

Option: Three-Sections Heavy-Duty Solid Ball-Bearing Sliding Rails

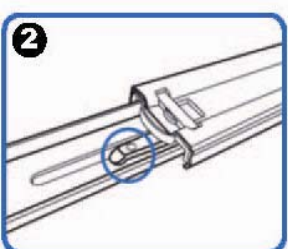
Model: RB26

Features: Universal Design to match almost all chassis on market, Heavy-Duty Slide Ball Bearing
 Built-in stop-latch, lock chassis in extended position for easy access ,
 Simply pressing on the plastic levers on each side and slide your case back into the cabinet

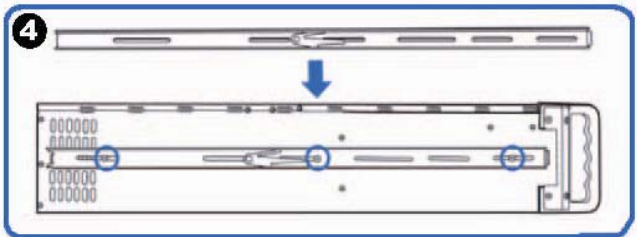
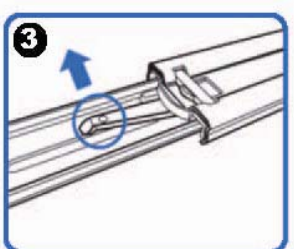
Warranty: 1 Year



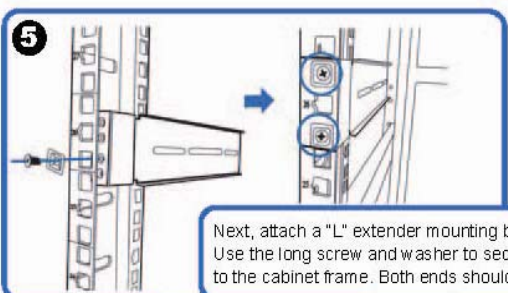
(Pull the center slide all the way out until it reaches the end)



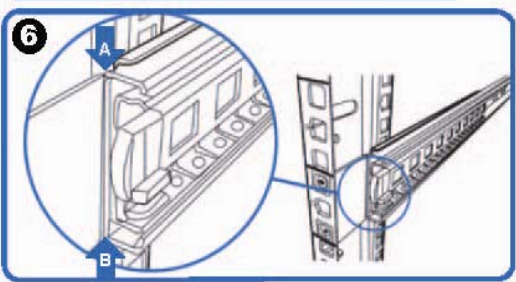
You will see a locking clip at the end point of the center slide. Push it down and unlock the center slide.



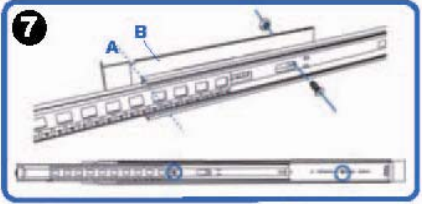
Now put the center slide right next to the rackmount chassis. You should be able to find screw holes on both sides of chassis. Holes are used for mounting the center slide. Later the center slide will be use for attaching the sliding rail.



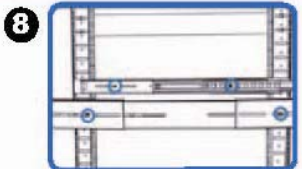
Next, attach a "L" extender mounting bracket on to the cabinet. Use the long screw and washer to secure the "L" extender bracket or to the cabinet frame. Both ends should have the extender bracket.



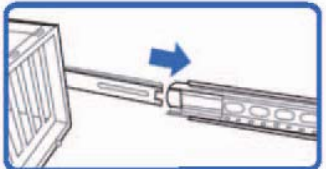
Align front outer rail to the indent of L bracket between Point A & B.



Secure outer rail to L bracket with crews and nuts.



Repeat previous steps to secure sliding rails on both sides.



Reattach inner rail back to center rail.