

# KI-M228R

**2U Ultra compact Hotswap Mini itx chassis depth 11" only**

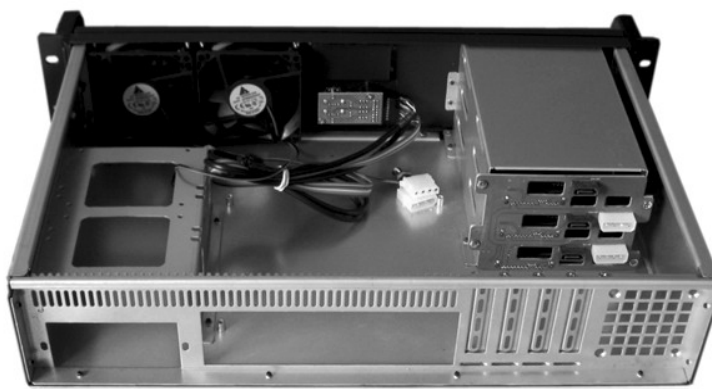


## Introduction



The KI-M228R is a idea solution for Home Theater Personal Computer (HTPC) With storage capacity up to 3 TB per each bay, Support 3.5" hotswap and fix HDD ,maximizes data storage and backup functionality at the same time. These series are ideal platform for HTPC build using popular AMD and Intel processors.

## Features and Benefits

- ▶ Compact size to save space,Depth=280mm
- ▶ With 3\*3.5" hotswap+1\*3.5(internal) drivebay
- ▶ Keylock door with air filter
- ▶ Mini itx M/B(17cm x 17cm)



## Specification

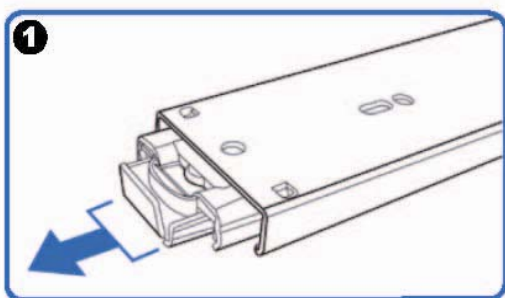
Dimension (W*H*D)	19" x 2U x 11"/ 482 x 88 x 28 (mm)
Material Construction	Heavy-duty & Rugged steel 1.2mm + Industrial Alunimum front panel
M/B Size	17cm x 17cm (Atom Mini-ITX)
I/O	Standard I/O with M/B
Expansion	4 slot low profile
Control & Indicator	1*Power switch +1* Reset switch 1 x LED(power) +1 x LED(HDD) 2*2.0 USB
Cooling Fans	2 x 80mm silent Fan intake + 1 x 60mm fan at rear(option)
DriveBay	3*3.5" hotswap + 1*3.5" HDD(internal)
Power Supply	High efficiency 1U P/S 250w~400w(option) 
Sliding rail	20" ball bearing sliding rail (option) 
Color	Black / Red / Bule / Green / Silver
Operation Temperature	Up to 50C (122°F)
Operation Humidity (Non-condensing)	Up to 90%
Packing Measurement CBF / CBM	1.2 / 0.033
Packing N.W / G.W	5.5KGS /6.5KGS

## Option: Three-Sections Heavy-Duty Solid Ball-Bearing Sliding Rails

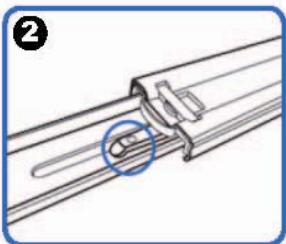
Model: RB18

Features: Universal Design to match almost all chassis on market, Heavy-Duty Slide Ball Bearing  
Built-in stop-latch, lock chassis in extended position for easy access ,  
Simply pressing on the plastic levers on each side and slide your case back into the cabinet

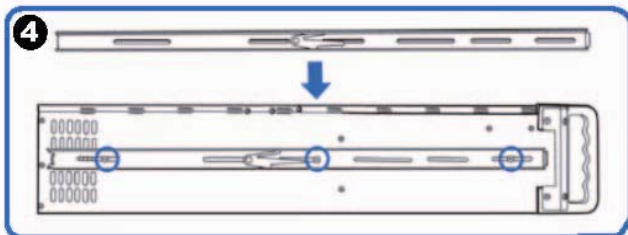
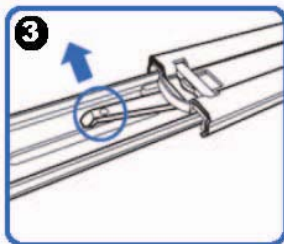
Warranty: 1 Year



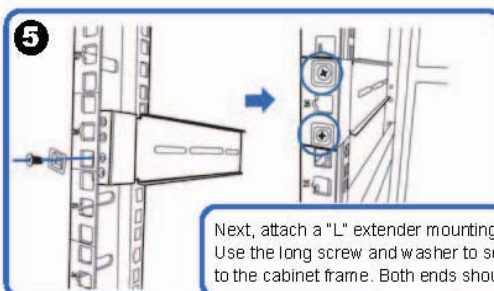
(Pull the center slide all the way out until it reaches the end)



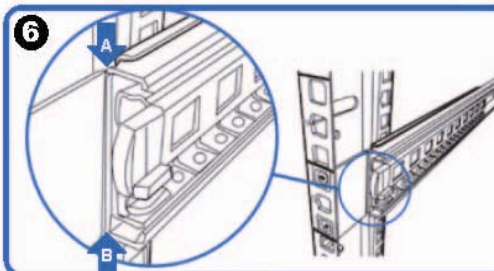
You will see a locking clip at the end point of the center slide. Push it down and unlock the center slide.



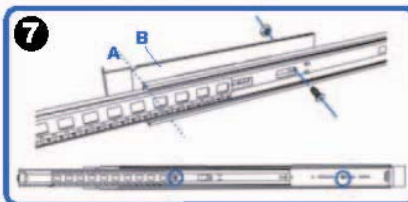
Now put the center slide right next to the rackmount chassis. You should be able to find screw holes on both sides of chassis. Holes are used for mounting the center slide. Later the center slide will be use for attaching the sliding rail.



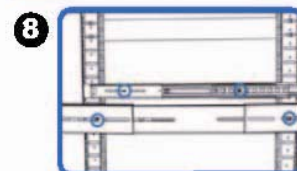
Next, attach a "L" extender mounting bracket on to the cabinet. Use the long screw and washer to secure the "L" extender bracket on to the cabinet frame. Both ends should have the extender bracket.



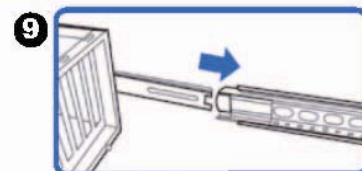
Align front outer rail to the indent of L bracket between Point A & B.



Secure outer rail to L bracket with crews and nuts.



Repeat previous steps to secure sliding rails on both sides.



Reattach inner rail back to center rail.