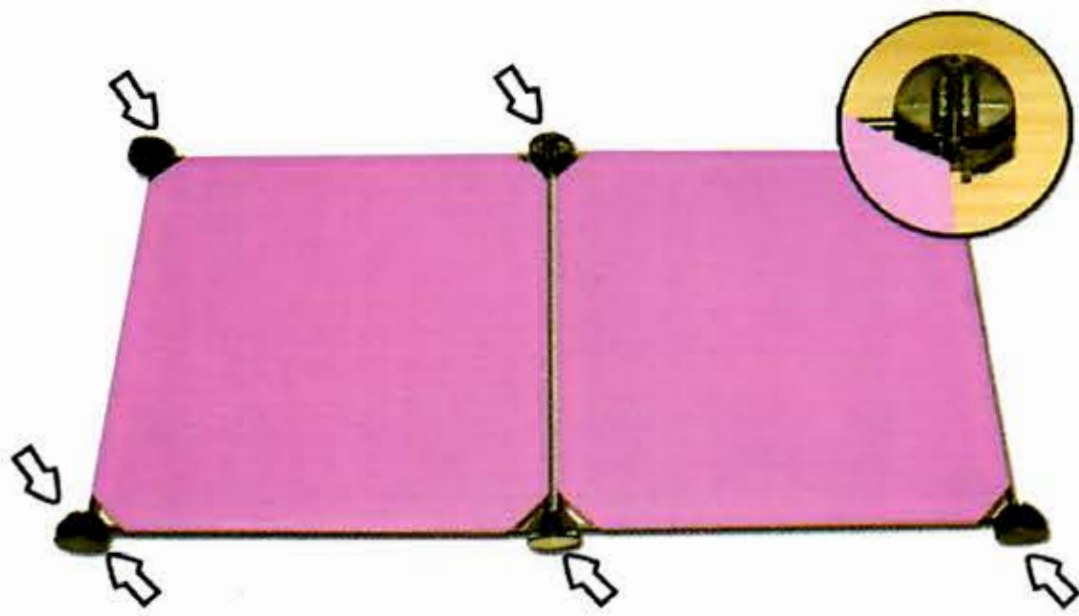


Installation Guide 1



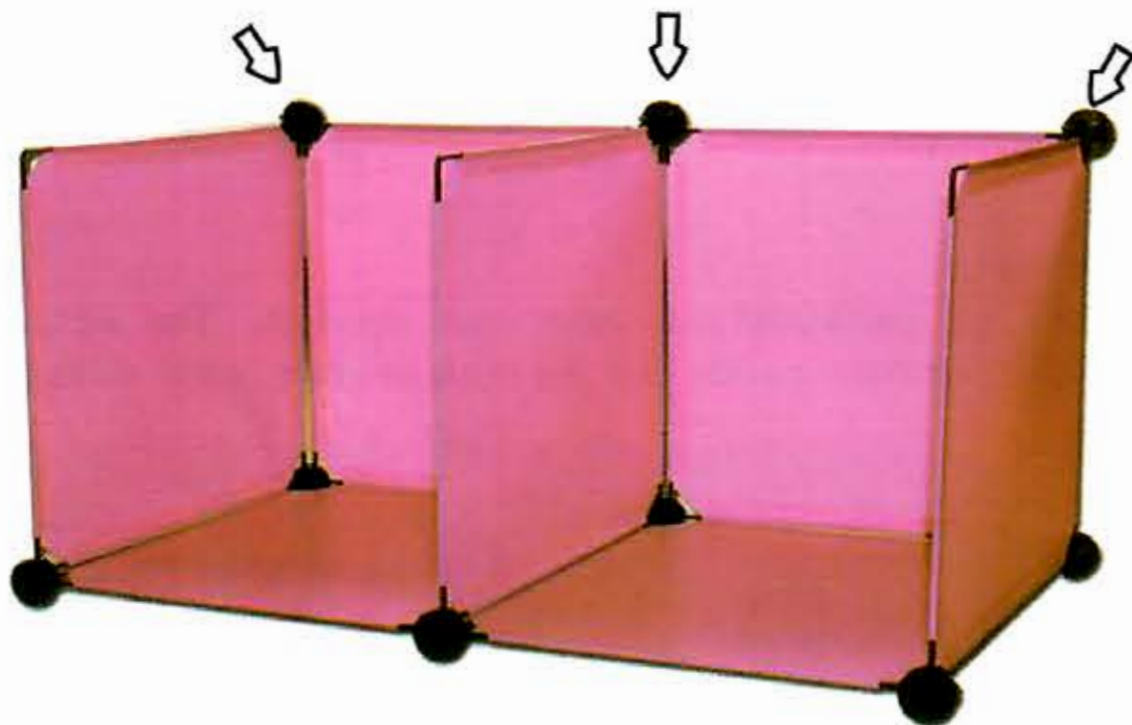
STEP 1 Building the base:

Insert the joining pieces securely to each corner of the panels as shown in the above diagram.



STEP 2 Installing the side & back panels:

Insert the side and back panels one by one in the same direction as shown by the arrows in the diagram above. Please ensure that the corners of the panels are fully inserted into the end of each joint.



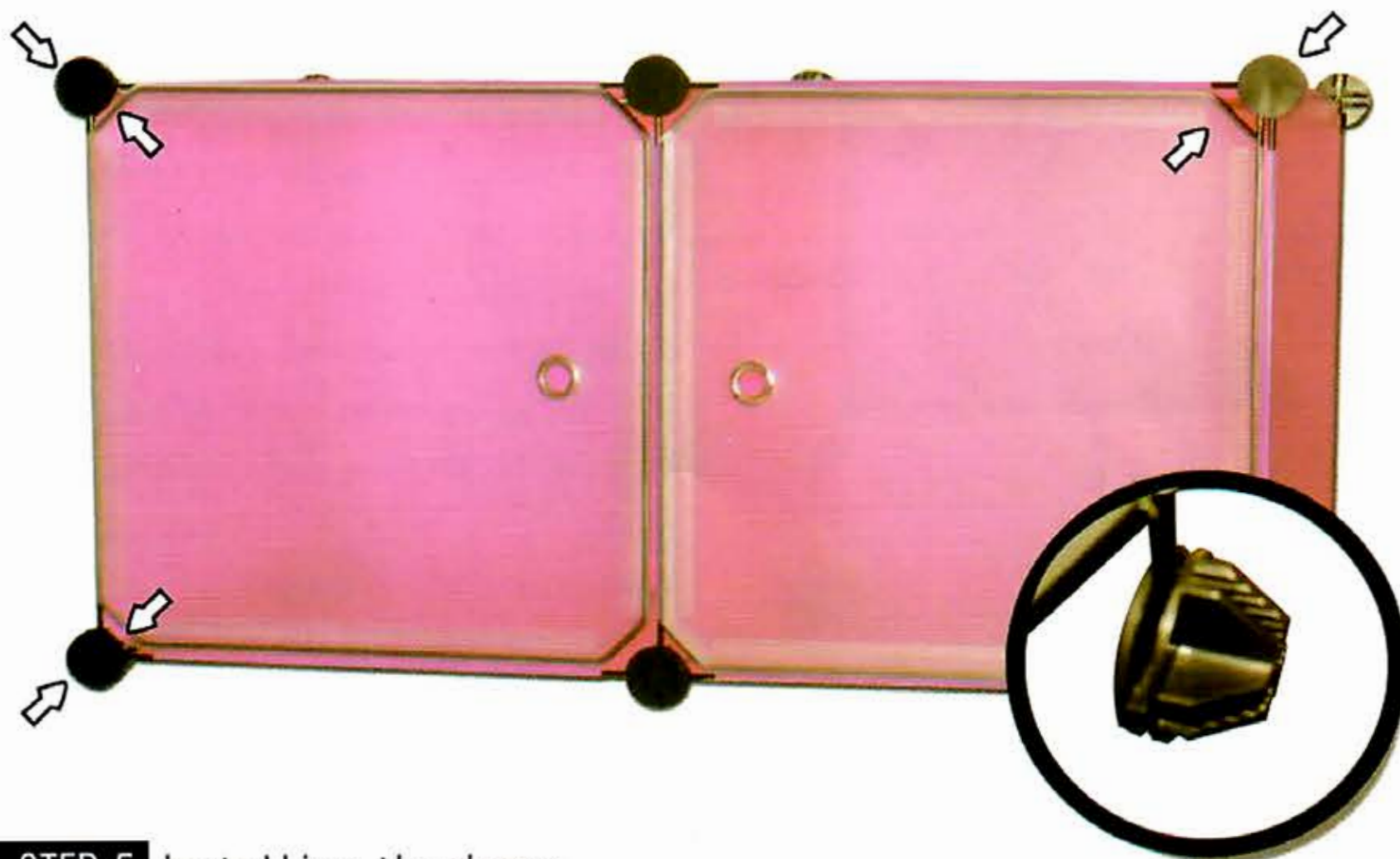
STEP 3 Installing the back joints:

Insert the joints according to the direction of the arrows shown in the diagram above.



STEP 4 Installing the top panels and joints:

Insert the top panels into the joints towards the same direction as shown by the arrows. Insert the joints to the front top section of the panels.



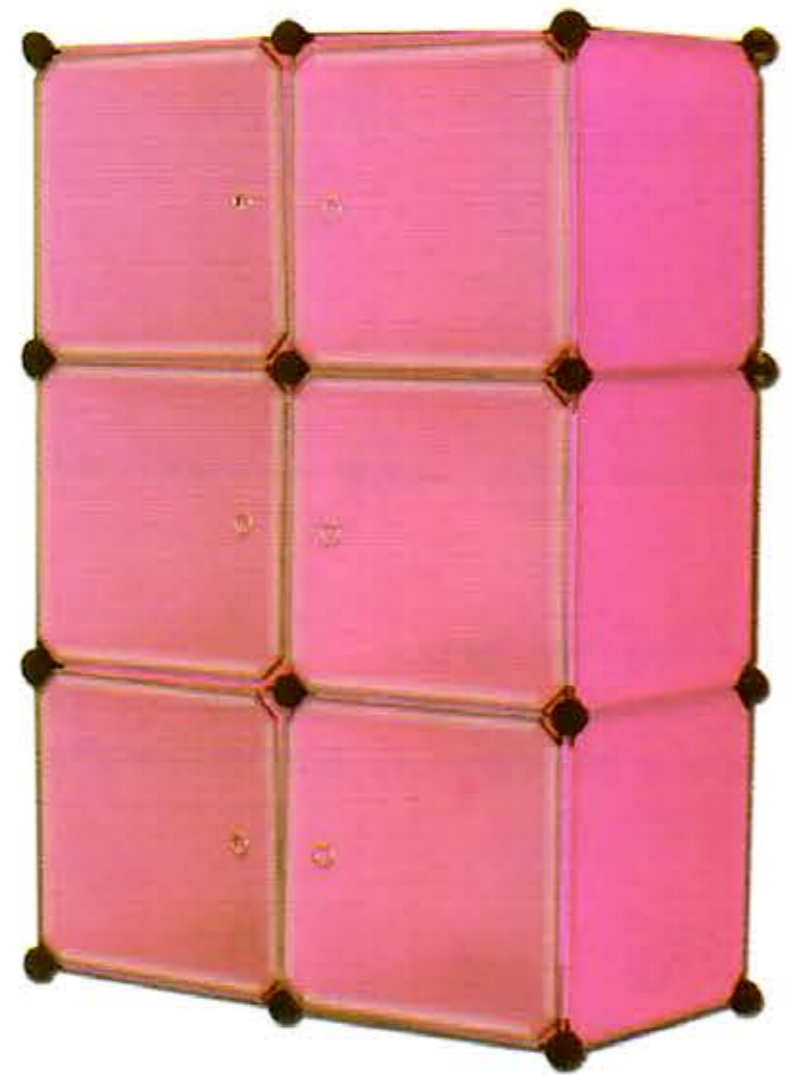
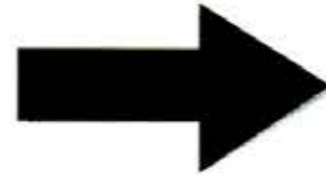
STEP 5 Installing the doors:

Install each door by inserting each end of the metal rods into each joint.



CABLEMATIC

Installation Guide 2



STEP 6 Installing the second, third, etc... tiers sequentially

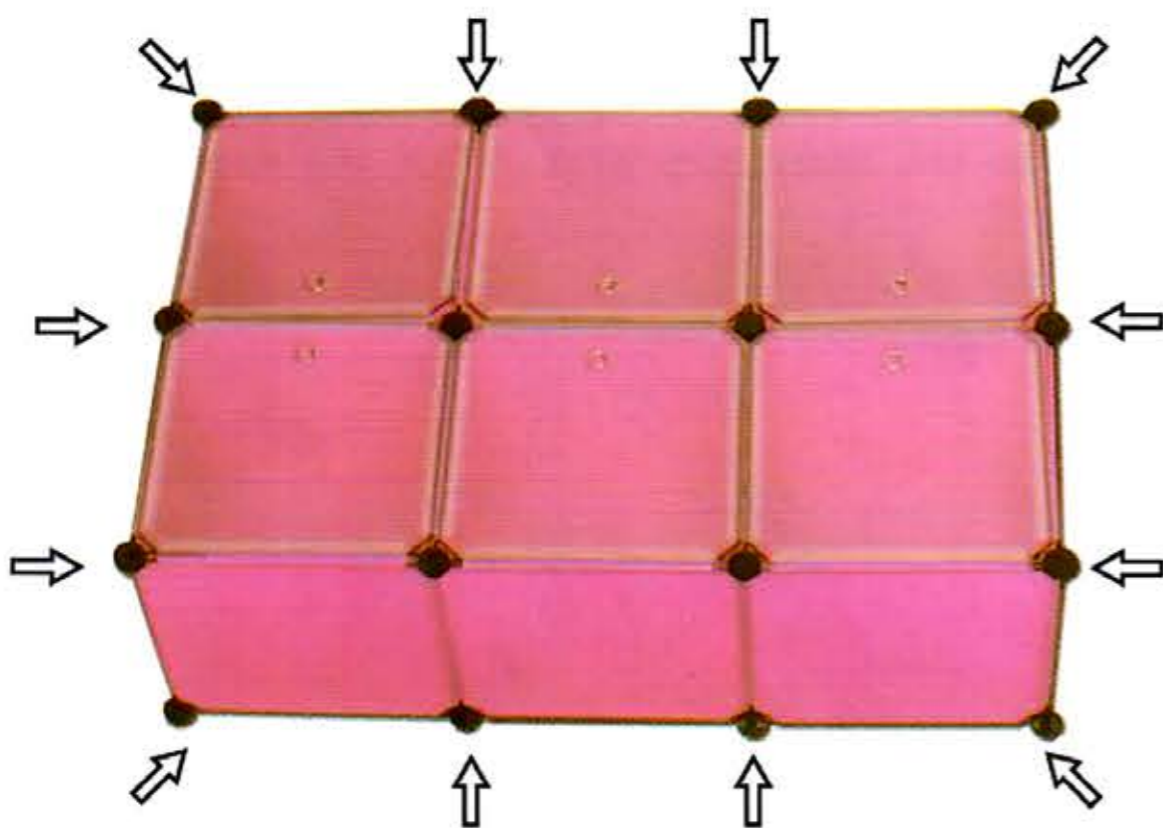
Using the above example, add additional panels and joints to personalise your own design. The sets above demonstrates 2 compartments per tier. This installation guide is suitable for any custom build.

Caution!

1. Excessive force and/or standing or climbing directly on the unit may cause damage to the part and/or personal injury.
2. Maximum load weight for each compartment is 10kgs. Exceeding this limit can lead to damage or instability of the unit.
3. Avoid spills by corrosive chemicals such as strong bleach, acids or alkalis.
4. Avoid direct contact with heat sources or hot surfaces.

Installation Tips

1. Install from bottom to top. i.e. Start with the bottom section first and work your way up.
2. For a more cosmetically aesthetic look, install the panels with the smooth seam on the outside of the unit. i.e. the folded seam facing the inside of the unit.
3. Install the panels square into the joints. Do not push the panels into the joints on an angle. Do not bend the panels whilst it is in the joint as this can cause undue damage to the panels and/or joints.
4. Only apply pressure to corners of the panels. Do not apply pressure to the centre of the panels as this may cause damage to the metal frame (An optional installation hammer can be used to assist in the installation process).
5. Install the panels in sequential order. For example, install the bottom panels first then continue with the back panels and finally the side panels.



STEP 7 Consolidation:

After the installation has been completed, apply a amount of additional force to ensure each of the panels and joints are properly secured.



CABLEMATIC