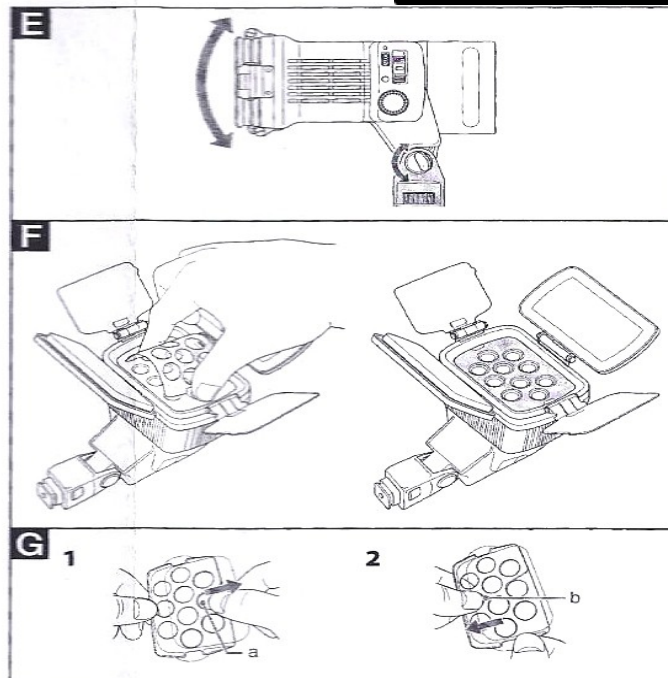
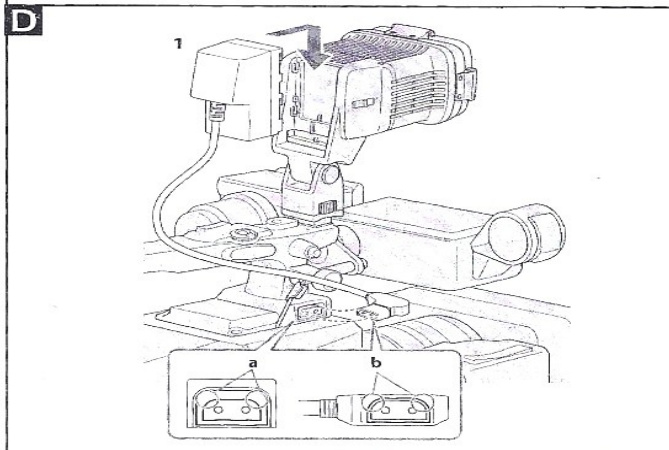
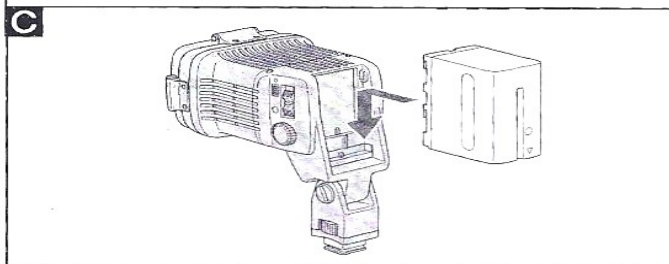
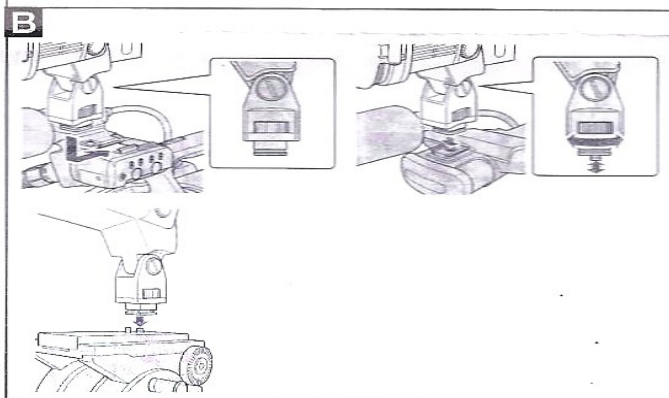
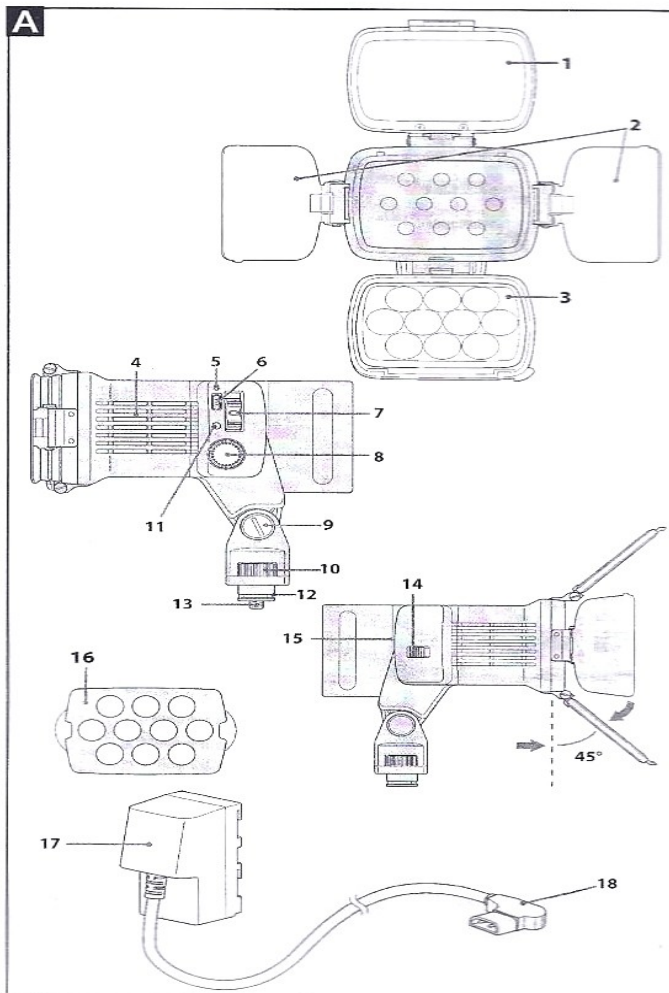


Battery Video Light



English

Before operating the unit, please read these instructions thoroughly, and retain them for future reference.

Owner's Record

The model and serial numbers are located on the bottom. Record the serial number in the space provided below. Refer to these numbers whenever you call upon your dealer regarding this product.

Model No. LED-LBPS1200 Serial No. _____

WARNING

To reduce fire or shock hazard, do not expose the unit to rain or moisture.

For Customers in the U.S.A. and Canada

This device complies with Part 15 of the FCC Rules. Operation is subject to the following two conditions:

(1) This device may not cause harmful interference, and (2) this device must accept any interference received, including interference that may cause undesired operation. This Class B digital apparatus complies with Canadian ICES-003.

For the Customers in the U.S.A.

CAUTION

You are cautioned that any changes or modifications not expressly approved in this manual could void your authority to operate this equipment.

NOTE

This equipment has been tested and found to comply with the limits for a Class B digital device, pursuant to Part 15 of the FCC Rules. These limits are designed to provide reasonable protection against harmful interference in a residential installation. This equipment generates, uses, and can radiate radio frequency energy and, if not installed and used in accordance with the instructions, may cause harmful interference to radio communications. However, there is no guarantee that interference will not occur in a particular installation. If this equipment does cause harmful interference to radio or television reception, which can be determined by turning the equipment off and on, the user is encouraged to try to correct the interference by one or more of the following measures:

- Reorient or relocate the receiving antenna.
- Increase the separation between the equipment and receiver.
- Connect the equipment into an outlet on a circuit different from that to which the receiver is connected.
- Consult the dealer or an experienced radio/TV technician for help.

CAUTION

Replace the battery with the specified type only. Otherwise, fire or injury may result. Do not expose the batteries to excessive heat such as sunshine, fire or the like.

Features

- When used with the condenser lens, this video light provides a center illuminance of approximately 1,600 lux. (When the distance from the video light to the subject is 1 m)
- The LED-LBPS1200 is a video light with a high-brightness white LED as its lens light source.
- The video light can be set to two color temperatures, 5,500 K or 3,200 K (when using the supplied color conversion filter).
- The white LED has a long lifetime of about 10,000 hours along with impact-resistant and weather-resistant qualities, and so requires almost no maintenance.
- A LIGHT connector adaptor is supplied that allows the video light to be powered by a camera with a LIGHT connector. If you use it, you do not need the battery pack for the video light.

(The LIGHT connector adaptor can only be used with compatible cameras. For details about the LIGHT connector, see the instruction manual of the camera.)

Precautions

- The video light does not have dust-proof, splash-proof or water-proof specifications.
- The video light is a precision instrument. Do not drop, strike or apply a strong impact.
- Do not attach the video light to the camera with an intelligent accessory shoe. The accessory shoe may be damaged.
- The operating temperature of the video light is from 0 °C (32 °F) to 40 °C (104 °F).
- Do not block the ventilation holes. Doing so will cause the internal temperature to rise which can cause a fire or an accident and cause the video light to malfunction.
- Do not look at the white LED directly at close range while it is on. It may damage your eyes.
- To prevent the camera from dropping, do not hold the video light attached to the camera to carry it.
- The LIGHT connector adaptor is specially made for the video light. Using it with another device may cause the device to malfunction.
- Do not place the video light near combustible or volatile solvents, such as alcohol or benzene. Doing so may cause a fire or smoke.
- Do not allow any liquid into the video light or drop the combustible or metal objects on the camera. Keeping using the camera after it, doing so may cause a fire or cause the video light to malfunction.
- Do not use or store the camera in the following locations. Doing so may cause the camera to malfunction or deform.:

- 2 **Align the screw on the video light with the concave screw on the camera.**
- 3 **Tighten the light attachment knob on the video light toward LOCK to fix the camera.**

Attaching the video light to the convex screw on the tripod or grip

- 1 **Loosen the light attachment knob on the video light toward RELEASE as far as it will go to retract the screw.**

2. **Insert the convex screw into the video light and turn the video light clockwise.**

Notes

- Depending on the frequency of use of the video light, the shoe attachment may be scratched or cracked. This can cause the video light to be damaged or fall off. If you find scratches and cracks on the shoe attachment, replace it with a new one. (Replacement part: Shoe holder S assembly (Number: X-2177-208-2)) You can obtain it at your dealer.
- Do not attach the video light to the camera with an intelligent accessory shoe. Doing so may damage the shoe attachment.

Connect the power supply to the video light

Before connecting, check that the video light's POWER switch is set to "OFF"

There are two types of video light power supply, as follows.

Attaching the battery pack to the video light (See illustration [C])

Notes

- Use a charged battery pack.
- Always use a Lithium-ion battery pack. We recommend using NP-F970/F770.
- The Lithium-ion battery pack NP-F570/F550/F530/F330 cannot be used.

Using the LIGHT connector adaptor (See illustration [D])

You can only use the LIGHT connector adaptor with compatible video cameras. When attaching the LIGHT connector adaptor to the video light and the camera, always turn off the power of the camera first.

Attach the LIGHT connector adaptor to the battery mount of the video light and connect the plug to the camera.

- Check the direction and shape of the LIGHT connector of the camera (illustration [D-a]) and the plug of the LIGHT connector adaptor (illustration [D-b]) before connecting.
- For details about the LIGHT connector, see the instruction manual of the camera.
- When not using the video light, disconnect the plug from the camera. The battery pack is discharged even when the video light is not in use.

Adjusting the angle of the video light (See illustration [E])

- 1 **Loosen the lighting angle adjusting screw (coin screw) with a coin and adjust the angle of the video light.**
- 2 **Tighten the lighting angle adjusting screw (coin screw) firmly to fix the angle of the video light.**

Notes

When adjusting the angle of the video light, hold the video light body firmly while loosening the lighting angle adjusting screw (coin screw).

Opening the protection plate, condenser lens and diffuser

Open the protection plate, condenser lens and diffuser about 45 degrees as in illustration [A].

Notes

- The angle of 45 degrees or more provides a buffer range to prevent damage. Be careful not to open the protection plate, condenser lens and diffuser over 45 degrees with a strong force. Doing so may cause them to damage.
- When storing the video light, store the condenser lens first, followed by the diffuser and then the protection plate.

Attaching the color conversion filter (See illustration [F])

You can attach a color conversion filter as necessary.

Attach the color conversion filter with the black side up. Insert the projecting portion on the right and left of the color conversion filter into the space between the front panel and frame of the video light.

Detach the color conversion filter reverse procedure.

Notes

- Do not apply the strong force when attaching the color conversion filter.
- When attaching or detaching the color conversion lens, make sure that the power of the video light is set to off. Remove the dust and dirt from the video light before attaching the color conversion filter to the video light.

Using the video light

Turning the video light on

Slide the POWER switch to "ON" while pressing down on the green button on the POWER switch.

The remaining battery lamp will light on in steps and the remaining battery power will be calculated.

When you use a Lithium-ion battery pack with the video light, the white LED lamp lights up for about 1.5 second after you set the POWER switch to "ON" and the remaining battery power is displayed about 8 seconds later.

When you use the LIGHT connector adaptor, the white LED lamp comes on about 1.5 second later.

Notes

- If the LIGHT switch of the video camera is set to "AUTO" when using the LIGHT connector adaptor, the video light turns on or off in conjunction with camera recording. The video light does not come on until the camera starts recording even if the POWER switch of the video light is set to "ON".

Adjusting the illuminance of the video light

The illuminance of the video light can be adjusted between 100% (MAX) and 10% (MIN) using the BRIGHT dial on the video light.

Using the condenser lens

The illuminance of the video light can be raises about 5 times by using the condenser lens.

The angle of the illuminance will be narrow.

Using the diffuser

The glare will be reduced and the light will be softer by using the diffuser.

Using the color conversion filter

The color temperature can be changed to about 3,200 K by using the supplied color conversion filter.

(The filter size is 46 mm × 67 mm (1 13/16 in. × 2 3/4 in.))

Replacing the filter (See illustration [G])

- 1 Place your finger at the cutout of the transparent sheet (a) on the back side of the color conversion filter. Pull out the sheet slowly.
- 2 Insert a new filter. Place your finger on any holes (b) and pull in the filter all way slowly.

Notes

- When using the LIGHT connector adaptor, if the POWER switch of the video light is set to "ON" and the LIGHT switch of the compatible camera is set to "AUTO", the video light comes on about 1.5 second after recording starts. To prevent this time-lag, set the LIGHT switch of the camera to "MAN" and turn on the video light before recording starts. Also see the instruction manual of the camera.
- When recording with the video light, if the subject is too close to the camera, several shadows of the subject may overlap (multi-shadow).

- The color temperature varies slightly depending on the position of the BRIGHT dial and temperature of the white LED. Adjust the white balance of the camera manually before recording.
- When using the color conversion filter, the illuminance is reduced slightly and the lighting angle is narrow.
- The property of the filter inserted in the color conversion filter varies according to the operating time and condition. We recommend that you check the recorded image and replace the filter if necessary. Store the unused filter at the cool and dark place. (One spare filter is supplied.)

Removing the video light from the camera

- 1 **Set the POWER switch of the video light to "OFF."**

When using the LIGHT connector adaptor, disconnect the plug from the camera.

- 2 **Pull the battery pack or the LIGHT connector adaptor upward while sliding the battery release button.**

- 3 **Loosen the light attachment knob on the video light toward RELEASE.** If the video light is attached to a convex screw, loosen the convex screw.

- 4 **Remove the video light from the accessory shoe of the camera, tripod etc.**

Maintenance

Clean the video light with a soft dry cloth. If the video light get dirty, wipe with a cloth slightly moistened with a mild detergent solution and then wipe with a soft dry cloth again. Do not use any type of solvent such as alcohol, benzene, or thinner for cleaning. Doing so may cause the surface of the video light to damage.

Specifications

Power source

- Lithium-ion battery pack L series (NP-F970/F770) DC 7.2 V
- LED video camera LIGHT connector output (DC 12 V) (When using the supplied LIGHT connector adaptor)

Power consumption

Approx. 20 W
(When using a Lithium-ion battery L series)
Approx. 20 W
(When using the LIGHT connector adaptor)

Maximum illuminance

Approx. 1,600 lux (1 m (3 1/5 ft.)) (When using the condenser lens)

Lighting angle

Approx. 65 degrees
(When not using the condenser lens)

Continuous lighting time

Approx. 2 hours 40 minutes
(When using a fully charged NP-F970 and the BRIGHT dial is set to MAX at an ambient temperature of 25 °C (70 °F))
Approx. 1 hour 45 minutes
(When using a fully charged NP-F770 and the BRIGHT dial is set to MAX at an ambient temperature of 25 °C (70 °F))

Lighting distance

When using the condenser lens
1 m (3 1/5 ft.): Approx. 1,600 lux
3 m (9 4/5 ft.): Approx. 200 lux
5 m (16 1/2 ft.): Approx. 72 lux
8 m (26 1/3 ft.): Approx. 28 lux
10 m (32 4/5 ft.): Approx. 18 lux

Color temperature

Approx. 5,500 K
(Default setting with the BRIGHT dial is set to MAX at an ambient temperature of 25 °C (70 °F))
Approx. 3,200 K
(When the supplied color conversion filter is attached to the video light)
(Default setting with the BRIGHT dial is set to MAX at an ambient temperature of 25 °C (70 °F))

Operating temperature

0 °C to 40 °C (35 °F to 104 °F)

Storing temperature

-20 °C to +60 °C (-4 °F to +140 °F)

Dimensions

Approx. 108 mm × 150 mm × 129 mm (w/h/d) (4 3/8 in. × 6 in. × 5 1/8 in.)

Mass (Video light only)

Approx. 450 g (15.9 oz.)

Included items

Battery video light (1)
LIGHT connector adaptor (Cord part Approx. 25 cm (10 in.)) (1)
Color conversion filter (1)
Set of printed documentation

BUY ON

www.cablematic.com