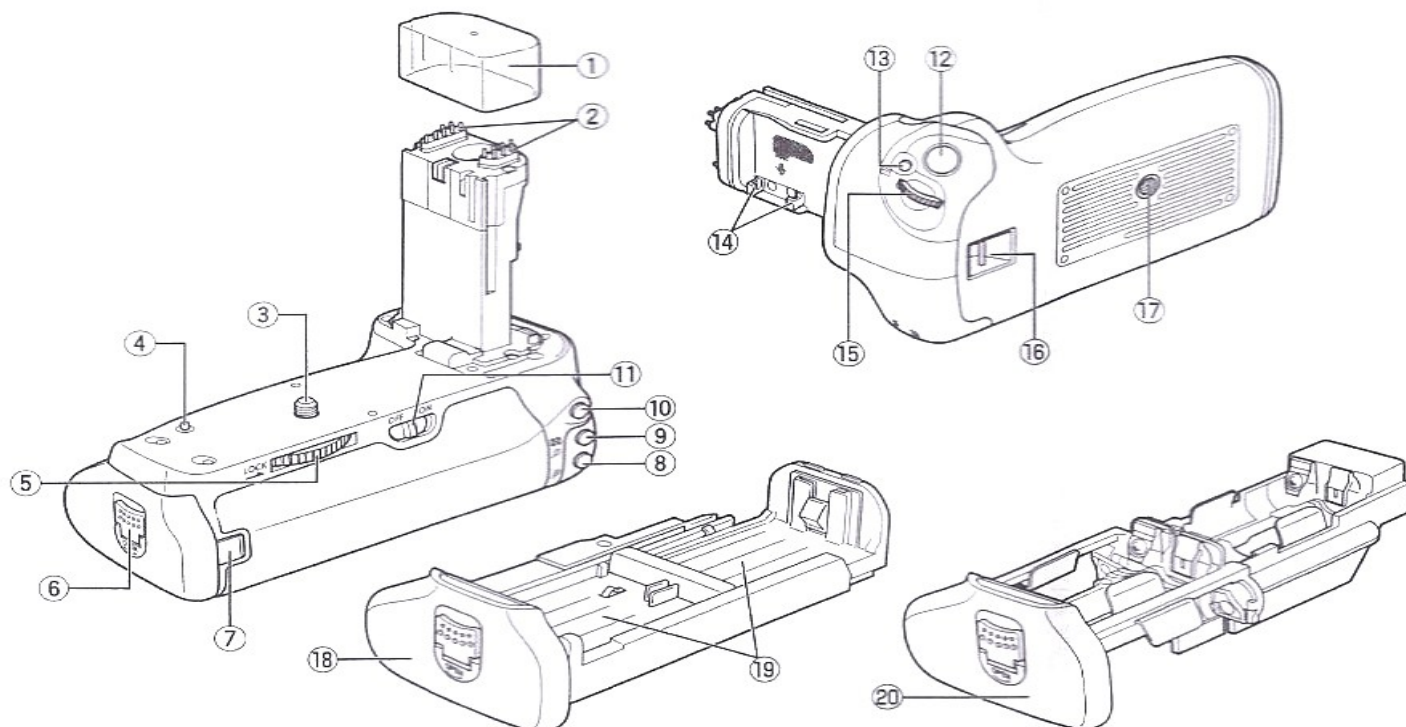


Battery Grip BG-E14

Manual

BUY ON
www.cablematic.com



Components:

① Protective cap ② electronic contacts ③ set screw ④ locating pin ⑤ assembling dial ⑥ battery release handle ⑦ DC adaptor jack ⑧ automatic focus point selection/zoom in button ⑨ automatic exposure lock/flash exposure lock button index/zoom out button ⑩ auto-focus start ⑪ vertical shooting switch ⑫ shutter button ⑬ auto-focus modes ⑭ battery cover clip ⑮ main dial ⑯ wrist strip ring ⑰ tripod jack ⑱ battery holder BGM-E14L (for LP-E6) ⑲ Battery Compartment ⑳ battery holder BGM-E14A (for batteries with the size of AA/LR6)

BG-E14 is a battery grip which can hold two LP-E6 batteries or six size-AA/LR6 batteries. It is also equipped with vertical shooting shutter button, main dial and etc, to enable shooting in the same way as a horizontal grip

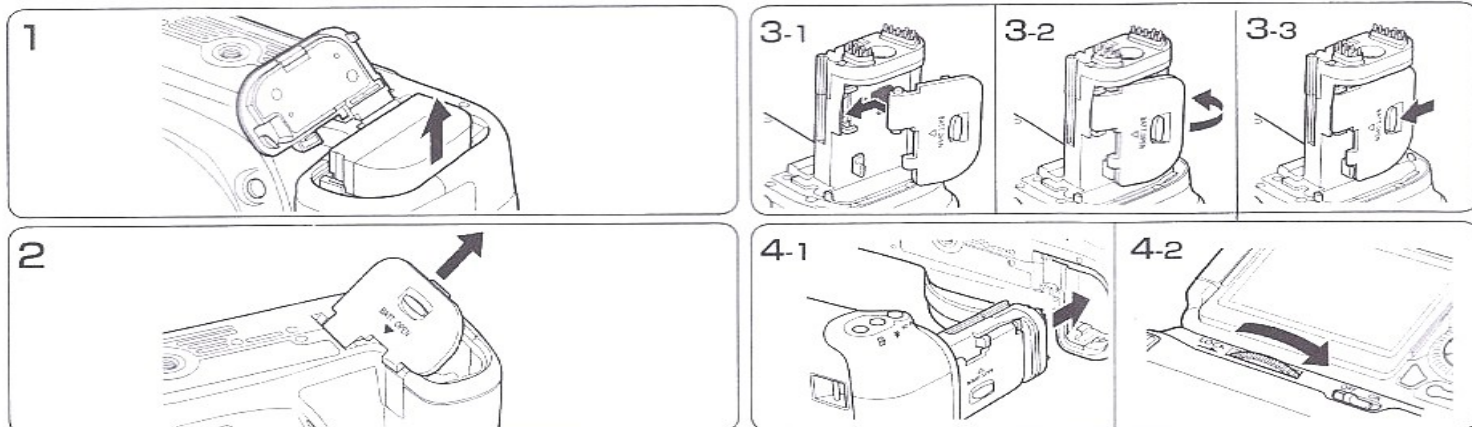
Do read the manual before using this product.

Please keep it properly for convenient access.

Please use the product only after you fully understand how to use.

Installed to the camera:

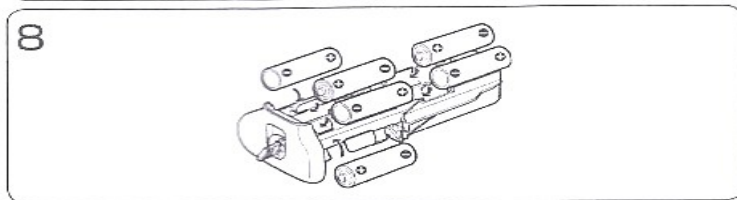
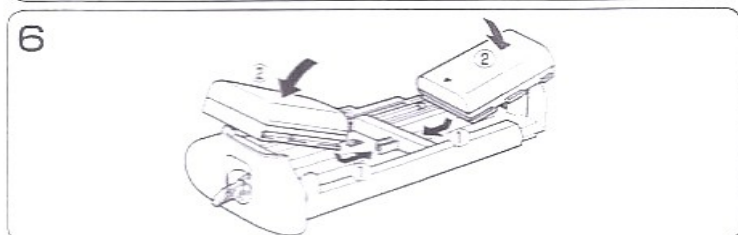
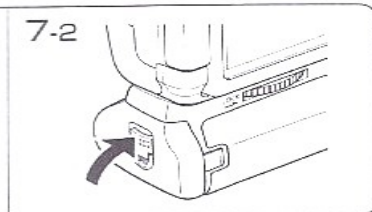
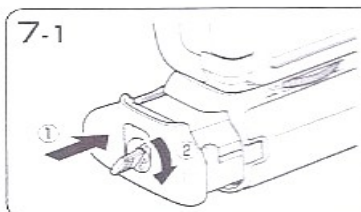
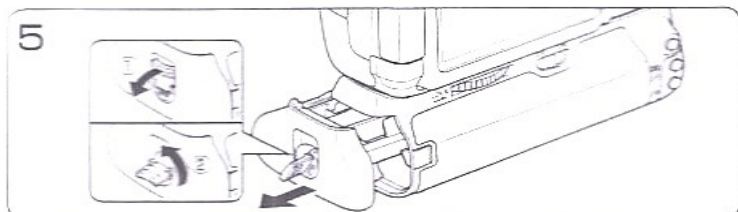
1. Remove the battery from the camera (see figure 1)
2. Pull the battery cover in a leaning direction so as to remove it (figure 2)
3. Remove the protective cap (component ①)
4. Place the battery cover into cover clip
Slip the hinge of cover into the clip (figure 3-1) until it's put in place (figure 3-2)
To remove the cover, you have to slip the release lever so as to unlock it (figure 3-3) and then remove it.
5. Insert the electrical contacts into battery holder (figure 4-1)
6. Aim the set screw at the tripod jack and then turn the assembling dial so as to fasten the grip tight to the camera (figure 4-2)



- Once the cover has been open, please don't push it any more to protect the hinge.
- Please install the grip without batteries to the camera. If the grip with batteries is installed to the camera, it is possible that the test result of battery power is not correct.
- Before installing to or removing from the camera, do turn off the camera and remove the batteries. After removing the grip, please install protective cap for electrical contacts.

■Installing the batteries

1. After pulling out the release handle, turn in the direction of the arrows and then pull out the battery holder BGM-E14A (for size -AA/LR6 batteries. (figure 5)
2. Put the battery LP-E6 (one or two) into the battery holder BGM-E14L (figure 6)
3. Put the battery holder into the grip (figure 7-1)
 - After installation, please check whether the holder has already been fastened tight to the grip.
4. Turn off the release handle (figure 7-2)



- If only one battery pack is used, it may be inserted in either the right or left sides.
- If two battery packs are inserted, power is supplied simultaneously by both battery packs. Two battery packs with different charging levels can be inserted and used without any problems.
- Remove the battery packs from the battery grip when the camera will not be used for an extended period.

■Install batteries with the size -AA/LR6

1. Insert the batteries into battery magazine (for size-AA batteries) (figure 8)
 - Make sure the + and - battery contacts are properly oriented as shown in the illustration..
2. Attach the battery magazine into the battery grip. (figure 7-1)
 - After attaching, check that the battery magazine is securely attached to the battery grip.
3. Close the release handle. (figure 7-2)

- When using the batteries with the size of AA/LR6, the speed of high-speed burst during single auto-focus will be a little slower. Besides, the speed of high-speed burst during AI Focus will be a little slower.
- When using the batteries with the size of AA/LR6, it's recommended to use these batteries only in emergencies because of its limited number of photo capacity. The photo/video capacity will be largely reduced especially during live view shooting and clip shooting. The capacity depends on the brand and storage condition of the batteries.
- When using the batteries with the size of AA/LR6, please use 6 new batteries with the same brand in the temperatures of 20 °C or above. The camera won't work well if new and old batteries are used together or in low temperatures.

BUY ON
www.cablematic.com

Safety Precautions

The following precautions are to prevent potential danger or loss. Please read them carefully and use this product correctly and safely.

▲WARNING: Failure to comply could result in death or serious injury.

- Do not conduct the following operations, as they may cause fire, fever, fluid leakage or rupture.
 - Use other batteries, power supplies, accessories, deformed or modified batteries.
 - Short-circuit, disassemble, deform, heat, weld the battery, put it into fire or water or apply strong impact.
 - Reverse the positive and negative. Insert new battery with used ones or a different type.
 - Insert metal objects into the contacts point.
- When fluid leaks, changes color, deforms, smokes, gives off a burning smell or other abnormal situation appears, please pay close attention and promptly remove the battery. If you continue to use the battery, it may cause fire, electric shock or burn.
- When you don't use the camera, remove and store the battery. Otherwise, it may cause electric shock, fever or fire.

- Do not use it in a flammable gas environment . Otherwise, it may cause explosion or fire.
- When the inside device exposed after being dropped, do not touch the exposed parts. Otherwise, it may cause electric shock.
- Do not disassemble or modify . The inside high voltage parts may cause electric shock.
- Do not store it in wet or dusty place . Otherwise, it may cause fire or electric shock.
- When use it on plane or in hospitals, please observe the corresponding instructions. This device emits electromagnetic wave and may affect measuring or medical equipment.

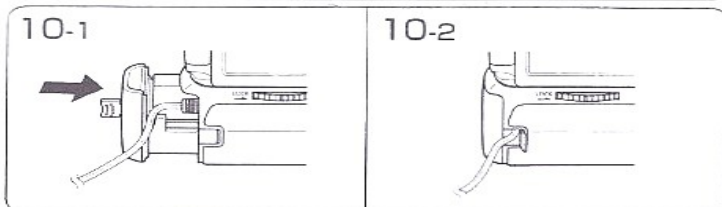
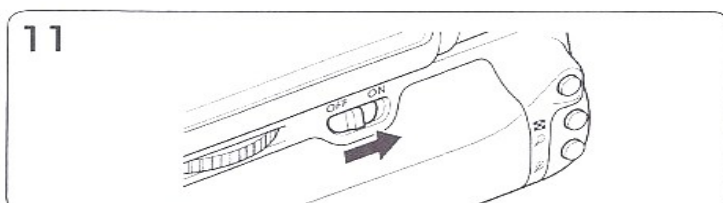
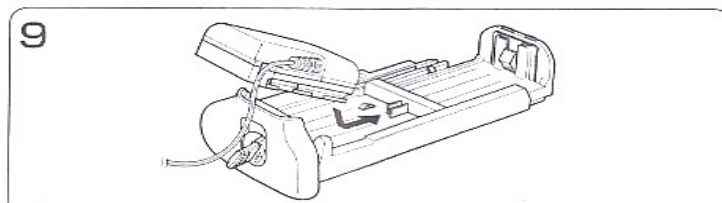
▲ Note: Failure to comply the following precautions may result in personal injury or property damage.

- Do not leave it near cars at high temperature or hot objects. The product itself will get hot and burn if touched.
 - Do not move the camera when installed with a tripod. Otherwise, it may result in injury or accidents. Besides, please choose relatively strong tripod to hold the camera and lens.
 - Do not use this product when covered or wrapped. Accumulated heat may cause the housing to change or cause fire.
 - When falls into the water or if water or metal objects and other foreign matters enter inside, remove the battery promptly. Otherwise, it may cause fire or electric shock.
 - Do not use organic solvents such as thinner or gasoline to clean this product. It may cause fire or health hazard.
 - Do not place it under low temperature. The product itself will get cold and result in injury when touched.
- When malfunction, abnormal or damaged, please contact with the dealership for repairing.

■ Power supply by home socket

If so, please use AC adaptor set ACK-E6 (sold separately)

1. Connect the DC connector plug with the AC adaptor socket and connect the power cord with AC adaptor. (refer to the manual of ACK-E6)
2. Install the DC connector to the battery holder (for LP-E6) (figure 9)
3. Have the DC connector wire through the hole (groove) (figure 10-1), and then through the DC connector wire hole (figure 10-2) and then put the battery holder into the grip.



- When the power switch of the camera is "ON", please don't connect/disconnect the power cord.
- Please don't have the DC connector wire caught between the grip and the battery holder.

■ The use of grip

- Turn on the vertical shooting switch (figure 11) so as to make the function of the grip button and the dial the same as that of the corresponding parts of the camera.
- In horizontal shooting, please turn off the vertical shooting switch in case of using buttons or dial on the grip.
- Battery power can be checked from the camera.
- The waist strap is good for holding it tight.

■ Specification:

Power:	(1) One or two LP-E6 batteries packs (2) Six size-AA/LR6 Alkaline batteries (3) AC adaptor set ACK-E6
Power switch:	Camera' power switch
Shooting capacity:	refer to the manual of the camera
Working temperature range:	0°C -+ 40°C
Operating humidity:	85% or less
Size:	about 145.8(W)*111.2(H) *85.3(T) mm
Weight:	about 295g (battery and holder excluded)

- Specification and appearance may change without notice.