

## FIREWIRE CARDBUS USER'S MANUAL

### System Requirements:

#### Hardware:

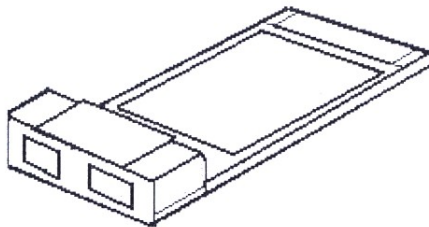
- A Pentium Pro®, Pentium III,IV® or later Notebook with 32-bit Cardbus (PCMCIA) slot

#### Software:

- Windows® 98SE/ME/2000/XP

#### Package Contents:

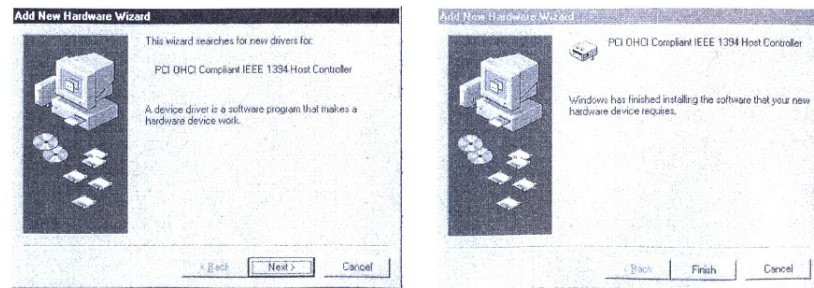
- Installation Guide
- FireWire (IEEE-1394) Card BUS Adapter
- This manual



### Software driver installation

The versions of Windows listed above have built-in support for this FireWire card. No additional drivers are required. When you first connect your FireWire 1394 card and power on your PC, Windows will automatically detect the new device and start the New Hardware Wizard. Please follow the step-by-step instructions below on how to properly install the required software drivers.

### Follow the steps listed below to install the Windows® 98 SE/ME drivers:

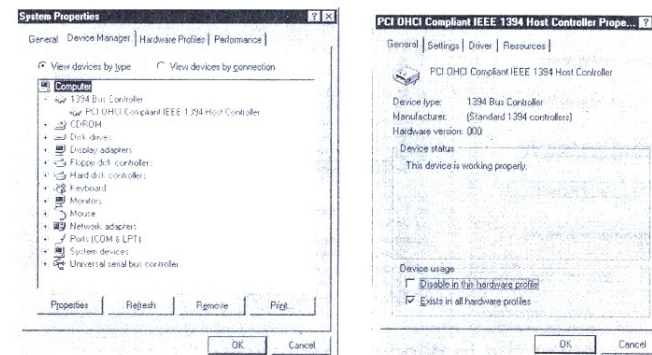


1. Turn on your notebook with Windows® 98SE/ME.
2. Insert the IEEE-1394 Card into the computer's PCMCIA slot.

3. Under the **Add New Hardware Wizard**, click **Next**.
4. Select the option "**Search for the best driver for your devices (Recommended)**" and click **Next**.
5. Uncheck all of the option checkboxes then click on **Next**.
6. Click "**Next**" and then "**Finish**" respectively.

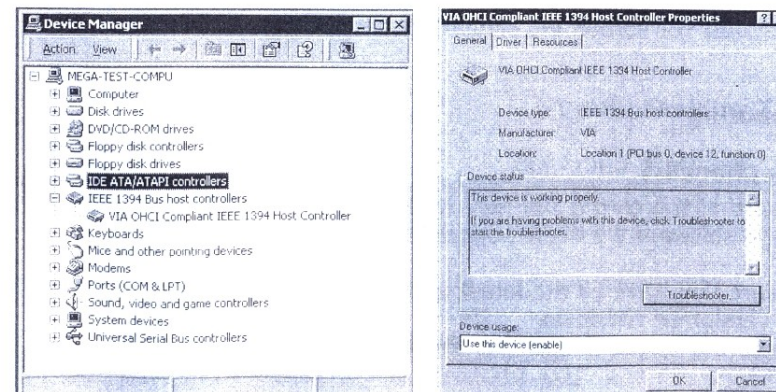
### To Verify Successful Installation in Windows®98SE/ME

1. From the main desktop, double-click **My Computer**, double-click **Control Panel**, **System**, then **Device Manager**.
2. You should see a category called **1394 Bus Controller**, and a device called **PCI OHCI Compliant IEEE-1394 Host Controller** (or something similar).



### Windows® 2000 Driver Installation

1. Turn on your notebook with Windows® 2000.
2. Insert the IEEE-1394 Card into the computer PCMCIA slot.
3. Windows® 2000 will install the default driver automatically.

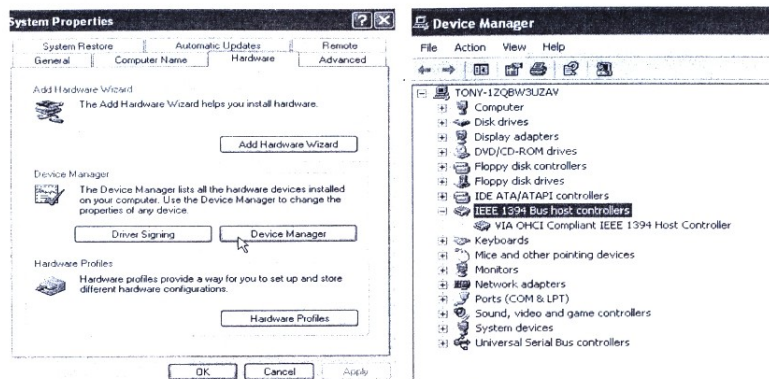


### To Verify Successful Installation in Windows® 2000

1. From the main desktop, right-click **My Computer**, select **Properties**. Click the **Hardware** tab, then **Device Manager**.
2. You should see a category called **IEEE 1394 Bus Host Controller** and a device called **VIA OHCI Compliant IEEE 1394 Host Controller** (or something similar).

### Windows® XP Driver Installation

1. Turn on your notebook with Windows® XP.
2. Insert the IEEE 1394 Card bus into the computer PCMCIA slot.
3. Windows® XP will install the default driver automatically.



IEEE 1394 in Windows XP

### To Verify Successful Installation in Windows® XP

1. From the Start menu, click **Control Panel**, then **System**. (Make sure you are in Classic View).
2. Click the Hardware tab, then **Device Manager**.
3. You should see a category called **IEEE 1394 Bus Host Controller** and a device called **VIA OHCI Compliant IEEE 1394 Host Controller** (or something similar).

## Troubleshooting

### Problem Checklist

If you find that the card is not functional after installing the driver and loading the software try these suggestions.

- Make sure you have all the latest updates and service packs installed for your version of Windows.
- Is the card inserted snugly into the slot?