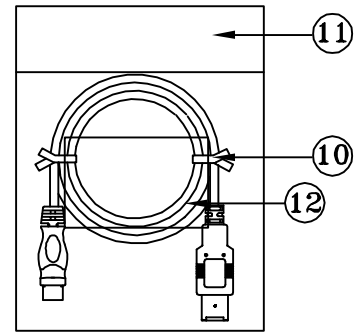
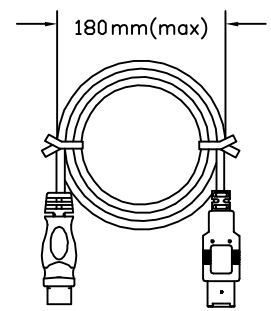
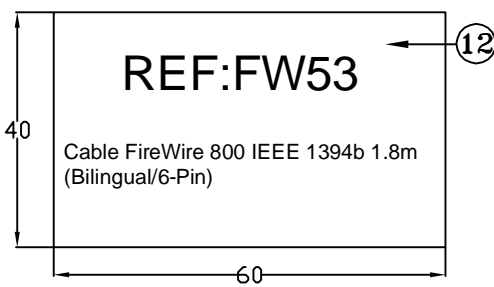
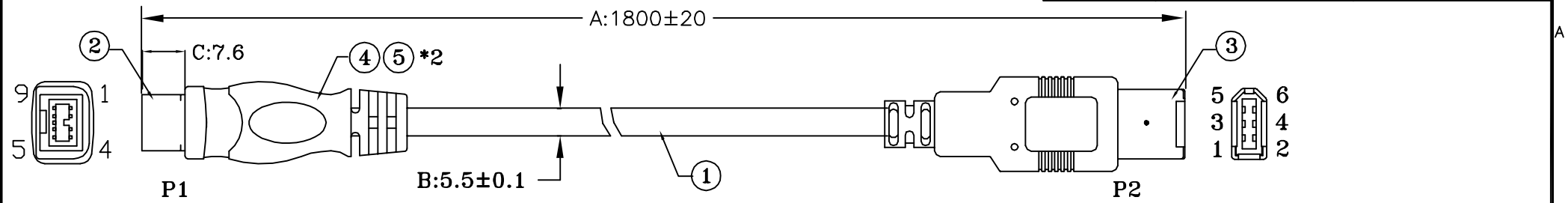
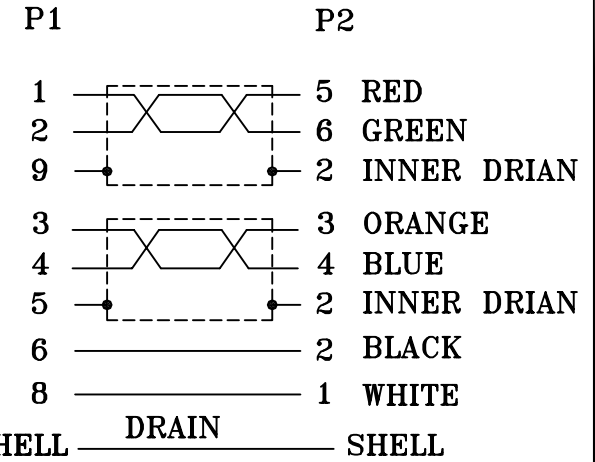


WEIGHT	CUSTOMER NO:	REMARK
130g-K1	FW53	CABLEMATIC



PINOUT:



- NOTE:**
- 1) P1 DIE NO: OU04039; P2 DIE NO: OU04003
 - 2) CORE WIRE COLOR 2P: RED&GREEN,ORANGE&BLUE;
2C: BLACK ,WHITE
 - 3) PRIMARY DIMENSION: A
 - 4) 1PC/PE BAG+LABEL.
 - 5) ROHS COMPLIANT

4	OUTER JACKET PVC 45Pa BLACK(1101) (RoHS)
3	IEEE 1394 6P PLUG MOLDING TYPE (RoHS)
2	IEEE1394B BILINGUAL PLUG 9PIN BLACK SOLDER TYPE (RoHS)
1	UL20276(30#1P+2D+A+MY)*2+26#2C+MYLAR+A+B(32 編鋁鎂絲)+D OD5.5 BALCK(1101) 1800MM (RoHS)

A	FIRST EDITION	WUZAN	21/02/2011
REV.	ECR	DESCRIPTION	C.N. DATE
THESE DRAWINGS AND SPECIFICATIONS ARE THE PROPERTY OF WIRETEK COMPUTER LIMITED AND SHALL NOT BE REPRODUCED COPIED OR USED IN ANY MANNER WITHOUT THE PRIOR WRITTEN CONSENT OF WIRETEK COMPUTER LIMITED.			
UNLESS OTHERWISE SPECIFIED: DIMENSIONS ARE IN MILLIMETERS ANGULAR TOLERANCE: ±1.0°		TITLE IEEE1394B CABLE	
DIMENSIONS	TOLERANCE	CHKD.	CONF.
0.00 TO 30.00mm	±0.10mm		
30.01 TO 80.00mm	±0.13mm	DR.	APPD.
80.01 TO 150.00mm	±0.15mm	WUZAN	
150.01mm ↑	±0.20mm	PART NO.	2152-1327
MATERIAL		SCALE	SHEET 1/1 UNIT MM SIZE A4 REV. A
FINISH			