

EDID Emulator Series



Ed. A September 2015

ITEM NO.: EE01H HDMI EDID Emulator

The EE01H HDMI EDID Emulator is designed for 1080P and 4K2K HDMI signal sources, to enable capturing and storing EDID (Extended Display Identification Data) informatios from a display. It can be powered directly from the HDMI source or with an optional external power supply.

EDID information contains important display settings such as maximum image size, color characteristics, factory pre-set timings, frequency range limits, etc., and since most video extender systems don't offer EDID communication between the source and remote display, the HDMI EDID Emulator is a perfect device for ensuring that the optimum signal resolution is provided to the display.

EE01H HDMI EDID Emulator

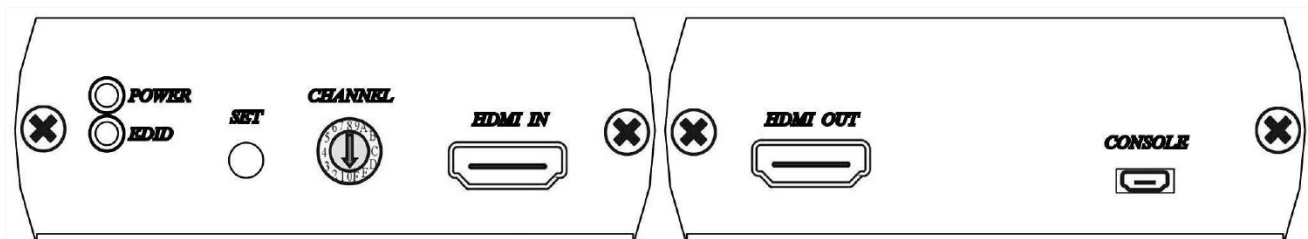
Features:

- Support 4 different EDID function: read, write, emulate, by pass
- Allows the source device to read the selected EDID information from the unit default or learned EDID memory.
- Built in rotary switch, support up to 12 sets default EDID setting
- Allow to save 3 sets custom EDID.
- Built in USB port to allow user to write EDID
- Built in Equalizer for reliable signal quality performance.
- Support HDMI 1.4a
- Support 3D
- Resolution support up to 4K2K (3840 x 2160 24/25/30Hz or 4096 x 2160 24Hz)

LED:

Green	ON	Power on
	OFF	Power off
Blue	ON	EDID error
	Slow Flash	Read/write EDID
	Quick Flash	Write EDID

Panel View:



Rotary Switch:

0:By pass mode
 1:Custom EDID #1
 2:Custom EDID #2
 3:Custom EDID #3
 4:720p 60Hz , LPCM 2 channel
 5:1080i 50Hz , LPCM 2 channel
 6:1080i 60Hz , LPCM 2 channel
 7:1080p 24Hz , LPCM 2 channel
 8:1080p 25Hz , LPCM 2 channel
 9:1080p 50Hz , LPCM 2 channel
 A:1080p 60Hz , LPCM 2 channel
 B:1080p 24 Hz , LPCM 5.1 channel
 C:1080p 50 Hz , LPCM 5.1 channel
 D:1080p 60 Hz , LPCM 5.1 channel
 E:1080p 60 Hz , LPCM 7.1 channel
 F:3840 x 2160 30 Hz (4K x 2K), LPCM 2 channel

EDID Operation:

1. By Pass Mode:Rotary switch turn to 0, connect source and monitor, the DDC will connect directly.
2. Manual Learning EDID Mode:Rotary switch turn to 1~3:
 - Press SET button 3 seconds to learn and write the EDID
 - Press SET button 0.5 second to select learned EDID
3. Default Mode:Rotary switch turn to 4~F, press SET button 0.5 second to select default EDID.

Caution:

When learning EDID by manual: If EDID failed, the resolution will back to default at 720 60Hz resolution.

EE01H built in micro USB for external power when your HDMI source is not able to provide enough power to the receiver.

For example, when using multiple EE01H with HDMI distributor, the power consumption may over the limitation of the HDMI device, please use micro USB to DC plug cable (package included) with 5V power adaptor (optional) for external power.

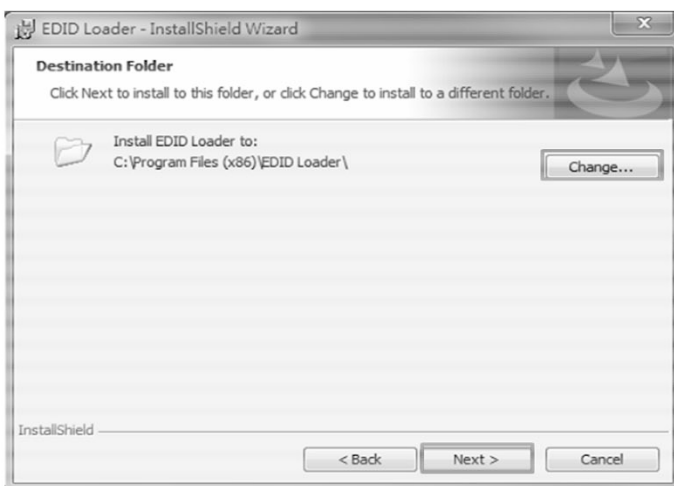
EDID Loader installation:



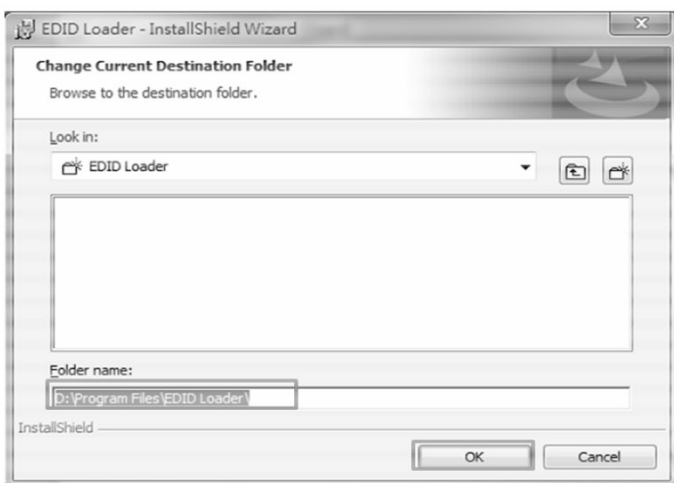
Double Click Setup file in CD path "EDID Loader" to install



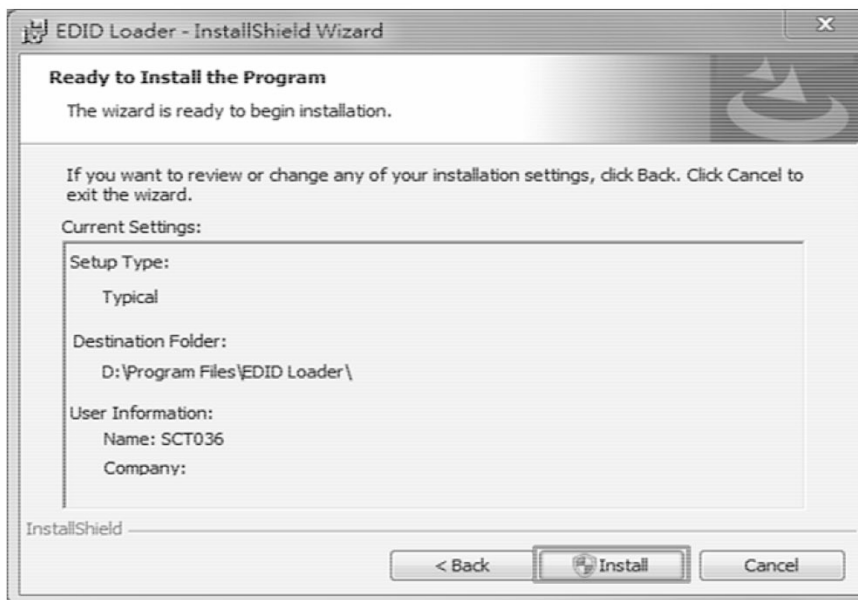
Click 「Next」 to next step



Default path is "C:\Program files (x86)\EDID Loader\", To change the installation path, please click 「Change...」, Click 「Next」 button to next step



If click 「Change...」 icon it will show up the modified window
After modified the path, click 「OK」 to back, click 「Next」 to next step.



Click 「Install」 to start installation



After installation, click 「Finish」 to complete the installation



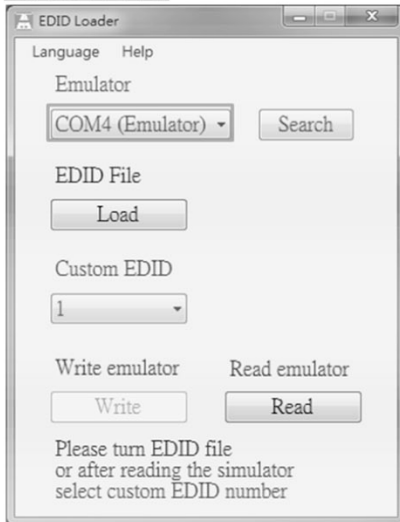
It will show "EDID Loader" icon on desktop, click the icon to run the program

EDID Loader Instruction:



Click shortcut of EDID Loader to enter the program

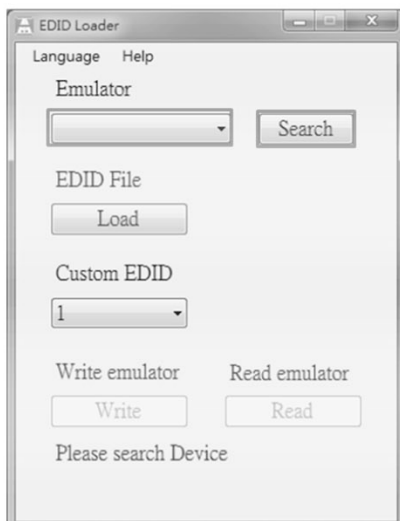
Write EDID:



In main screen you will see the 「COM4 (Emulator)」 if the emulator have been connected with PC and installed driver properly

*If it shows (Matrix) please pull down and select (Emulator)

*「TCP/IP」in the pull down menu is for other products, not for emulator

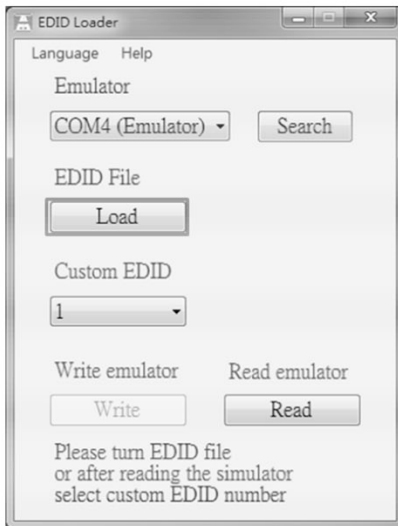


If the menu is blank please click 「Search」 to find the emulator



If still not find any devices it will show message "Try again?"

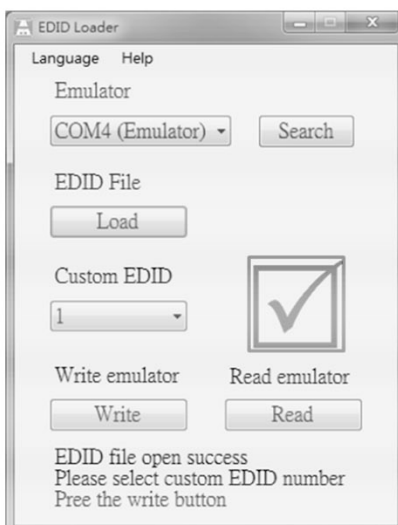
Please check the USB cable connection or use another USB port of PC then click 「Retry」



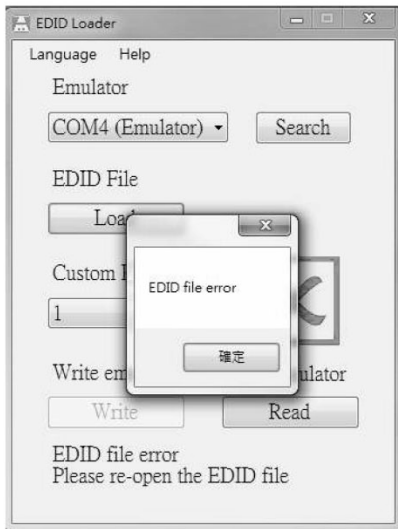
After emulation connected please click 「Load」 to load EDID file
It will show select file windows as below



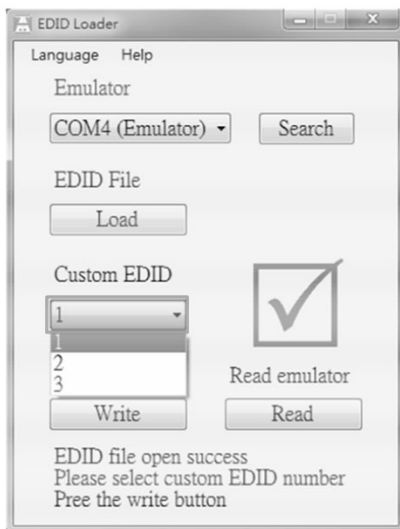
Select the EDID then click 「Open」
*Support format 「dat」 and 「bin」



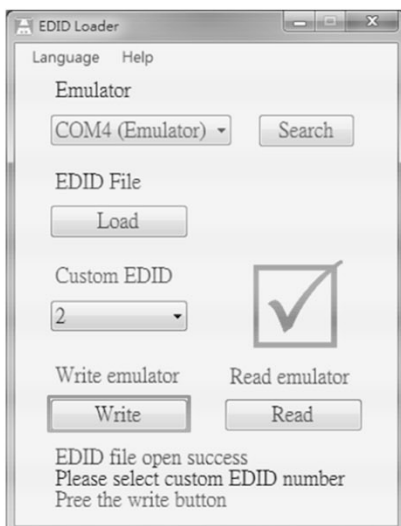
If the file is correct it will show a green checked icon



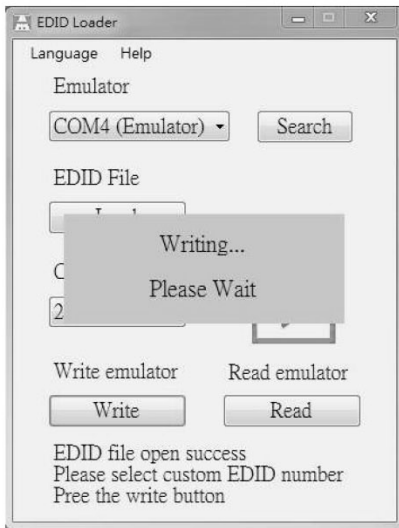
If the file is not correct format is will show a red X and message "EDID file error"



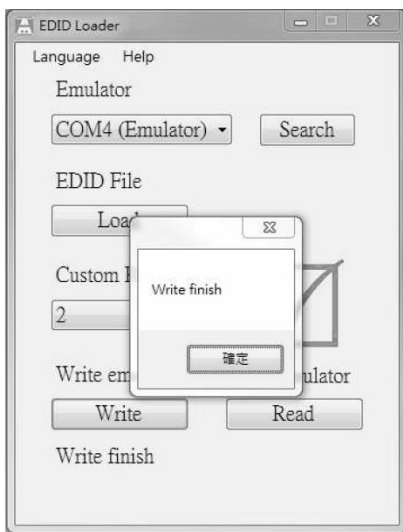
After open the EDID file pull down "Custom EDID" to select the bank 1~3 of EDID



Click 「Write」 to process



It will show message "Writing... Please Wait" when process

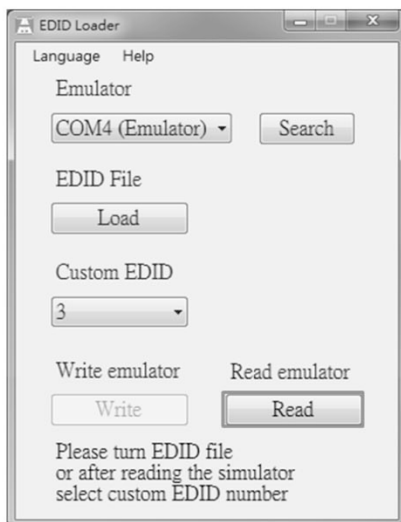


It will show message "Write finish" when finished

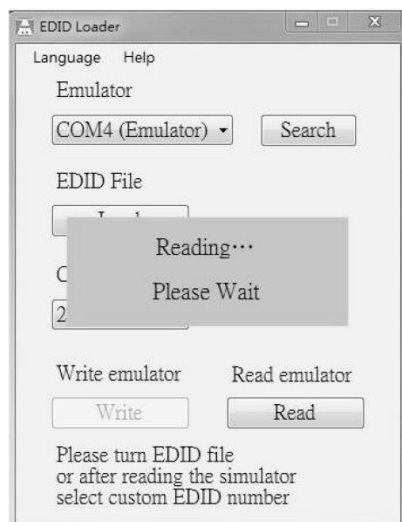
Read EDID:



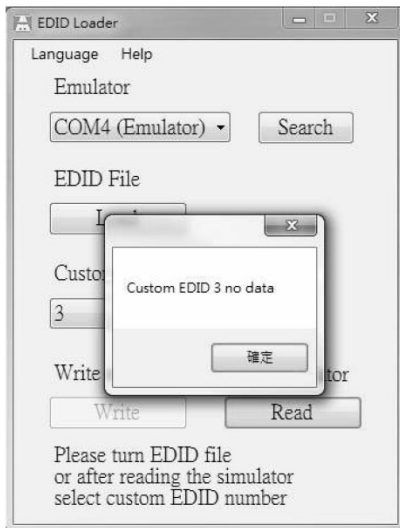
Pull down the "Custom EDID" to select the bank 1~3 of EDID



Click 「Read」



It will show message "Reading... Please Wait" when process



If there is no date in selected bank it will show message "Custom EDID x no data"

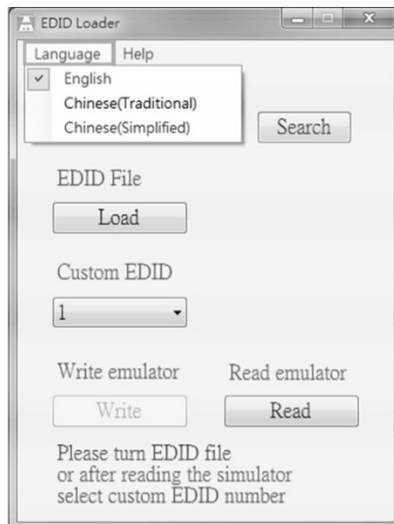


It will show EDID information after read, click 「Save」 to save to file
It will show save file windows as below



Key in the file name and select the format then click 「Save」

Select Language



Click 「Language」 to change English, Chinese Traditional and Chinese Simplified

EE01H Package Include:

EE01H x 1 pcs

CD x 1 pcs

Micro USB to DC jack cable x 1 pcs

Specification:

ITEM NO.	EE01H
Support Resolution	4K x 2K (3840 x 2160 24、25、30Hz or 4096 x 2160 24Hz)
LED	LED x 2 (Green, Blue)
Video Input /Output	HDMI x 2
EDID Writing	Micro USB x 1
EDID Switch	16 Rotary Switch x 1 (0~9 & A~F)
EDID Read/Write	Tact Switch x 1
Power Consumption	1.7 W (Max)
Power Adapter	DC 5V / 1A
Temperature	Operation: 0 to 55℃, Storage: -20 TO 85℃, Humidity: up to 95%
Dimension mm	88 x85 x30 mm
Weight g	185 g

RoHS CE FCC

Rev. A



Elpro Video Labs srl Str. della Pronda 45B 10142 Torino - Italy Tel. +39 011 770 1583
www.elprovideolabs.com info@elprovideolabs.com