



## Contents

---

1	Notice
2	Copyright
3	System Requirements
4	Notice
5	CloneDrive Software Features
6	CloneDrive Software installation
7	CloneDrive Software Use(1)
8	CloneDrive Software Use(2)
9	CloneDrive Setup
10	CloneDrive Other
11	CloneDrive Uninstall
12	Technical Support and Services
13	Contact us

## Notice

---

- Except in case of improper use, we provide a 3-year guarantee of free service.
- If this product is defective, please return it to the dealer from whom the product was originally purchased, together with your original sales receipt for replacement.
- FNet Co., Ltd. is not liable for any consequential, incidental or indirect damages(including damages for indirect personal injury, loss of business profits, business interruption, loss of business information and the like) arising out of the use or inability to use this product.
- FNet Co., Ltd. will not accept returns of opened packages.

## Copyright

---

The user is responsible for all results. FNet Co., Ltd owns this product and its relative information; we grant you no right to this product. FNet Co., Ltd. also owns all unauthorized rights in this book.

All rights reserved. No part of the FNet PCClone EX Lite may be copied without the writing permission or authorization of FNet Co., Ltd, who prohibits the sell 、 rental 、 exchange 、 lending 、 exhibition 、 revision 、 destruction, etc. of the product, as there actions could infringe on FNet's rights. FNet also prohibits anyone from re-compiling or reverse engineering of the software, or decoding of our product. Covering or removing the copyright and trademark description is not allowed.

FNet Co., Ltd. owns the FNet PCClone EX Lite's copyright and patent. This product and its manual possess multiple countries' copyright & patent. The trademarks of FNet PCClone EX Lite and FNet are registered by FNet Co., Ltd. and Future Net U.S.A. Corporation. MS-DOS 、 Microsoft 、 Windows Vista 、 Windows 2003 、 Windows XP 、 Windows 2000 、 Windows NT 、 Windows ME 、 Windows 98 、 Windows 95 、 Windows 3.1 are trademarks of Microsoft Corporation. Other pictures 、 product and company names, mentioned herein may be the trademarks of their respective owners.

The information in this document is subject to change at anytime without notice. All the product names used herein are own by FNet Co., Ltd unless otherwise noted.

# System Requirements

---

- Pentium computers or 100% compatible computers.
- Support OS: Microsoft Windows 98SE / Me / 2000 / XP / Vista.
- CPU Pentium or above.
- 128 MB RAM.
- Display card: compatible with VESA standard.
- CD-ROM driver.
- An external USB hard disk.

## Notice

---

- The type of file system is able to support FAT32 and NTFS both.
- Please use real-time communication software, when CloneDrive (such as: MSN, SKYPE, Yahoo Messenger, QQ, etc.) off, in order to avoid conflicts copy process failed.
- Does the hard disk happen to the bad sector? Please confirm in advance that can prevent an improper operating of backup or restore.

Software serial number stickers must be properly preserved for future certification, and free upgrades as a basis .

## CloneDrive Software Features

### Products with USB Dock perfect match

CloneDrive software with USB \_ Dock for a hardware product, hardware products to provide more value USB Dock additional features.

You can use the CloneDrive \_ software for your notebook computer or desktop computer for fast hard drive upgrades, not only retains the original

Have use of the environment, and upgrade quickly, do not need to reinstall your operating system and completely original application.

CloneDrive software you can \_ use between two hard disk copy fast copy. Applicable to general computer stores for its clients

Volume shipments desktop or notebook computer use.

CloneDrive software in \_ addition to hard copy data for quick action, but also help users to do for the new hard disk reorganization, so that

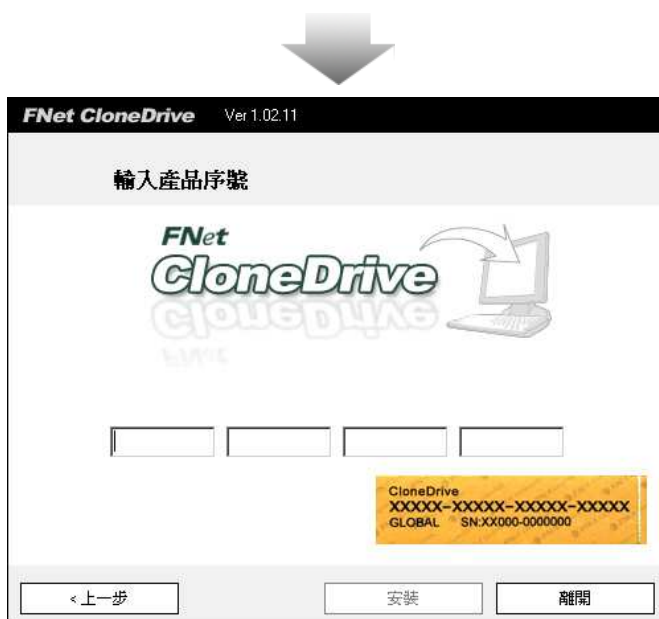
Efficient use of the new hard disk heights.

# CloneDrive Software installation

## Step



1. Will CloneDrive discs into the CD-ROM drive, The implementation of the disc film Setup.exe icon.
2. Into the Setup Wizard, click on the Terms of Use and Read carefully.
3. Check the "have read and accept the Terms of Use" and press The next step.



4. Please enter the product serial number, press OK, (Package comes with serial number sticker, style, such as the lower right corner of the screen)
5. Click OK, the implementation of the software installation,



6. Software installation is completed, press OK



7. The first time the installation is complete, the software automatically,

8. Loading completed, please double-click the desktop, Windows notification area bottom right corner of the green arrow icon in the call process (Note: This icon has the distinction between green and gray, green for external hard drives are detected, the gray is not,)

## CloneDrive Software Use(1) Applicable to single external hard drive and the computer terminal when the hard disk Press to Press

### Step



1. The single USB hard drive into USB 2-bay

Dock products, and connected to the computer,

2. Program the main screen, PC that the computer side of the distribution of hard disk sectors, USB external hard drive that the distribution sector, CloneDrive will end PC hard drive data and a complete copy of the distribution sector to external USB hard drive device,
3. After confirmation, you can press the start button on the bottom right of the hard disk Press to Press,



4. Please confirm time, you can press the Start button Press to Press, if not for Press to Press, press the Cancel button,



5. Hard Press to Press the picture half-way to stop the Press to Press, press the Cancel button,

6. In the Press to Press process, Windows Desktop notice the bottom right within the region CloneDrive icon will show green and yellow arrow symbols, said that the operation of the program being Press to Press,



7. Press to Press finished, press the OK button to complete the Press to Press,

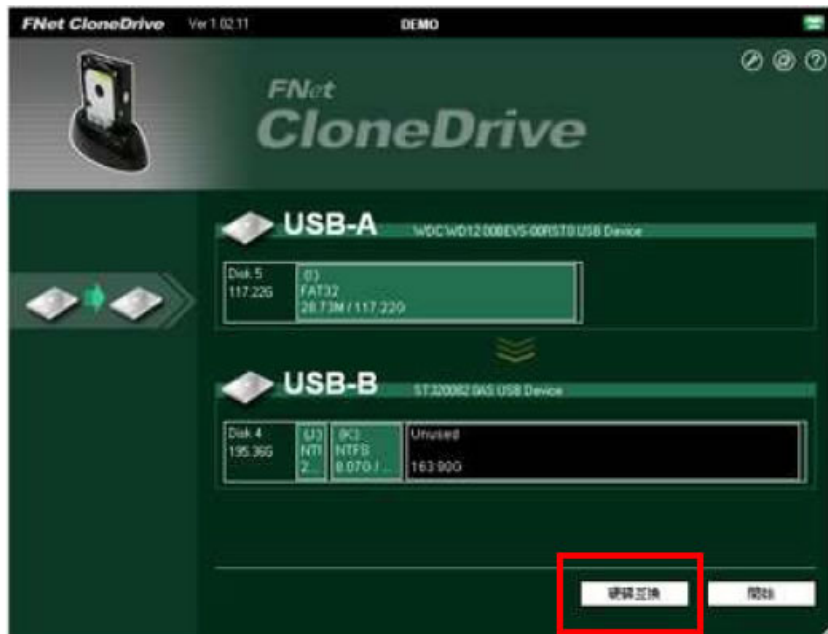
8. After pressing OK, the program's main screen can be recognized in PC side of the state sector and USB external hard disk drive sector for the same condition, that means the successful completion Press to Press,

9. Complete Press to Press, it can shut down CloneDrive program, and to upgrade the hard disk operations,




## CloneDrive Software Use (2) Applicable when two external hard disk Press to Press

### Step



1. To two USB hard disk into USB 2-bay Dock products, and connected to the computer,

2. Program main screen will display information on two USB external hard drive, the program will copy the complete USB-A device to USB-B devices, so make sure the hard disk want to copy the device is set to USB-A location, you can point Select the lower right corner of the  buttons to adjust the hard disk swap the order of

3. After confirmation, you can press the bottom right started

Press to Press the button to the hard disk,



4. Please confirm time, you can press the Start button Press to Press, if not for Press to Press, press the Cancel button,



5. Hard Press to Press the picture half-way to stop the Press to Press, press the Cancel button can be left in the main screen that drives Press to Press details

6. In the Press to Press process, Windows Desktop notice the bottom right within the region CloneDrive icon will show green and yellow arrow symbols, said that the operation of the program being Press to Press,



7. Press to Press finished, press the OK button to complete the Press to Press,  
8. After pressing OK, the program's main screen can be recognized in PC side of the state sector and USB external hard disk drive sector for the same condition, that means the successful completion Press to Press,  
9. Complete Press to Press, it can shut down CloneDrive program, and to upgrade the hard disk operations,

## CloneDrive Setup



Click the upper right corner of screen to set the program key (the red box marked point), enter the settings window



Pop-up settings window, you can choose the language option to change the software, choose whether to enable the USB key for Press to Press, and whether the time when the system will automatically enter the Windows CloneDrive program

CloneDrive Other



"About CloneDrive" instructions, please click on the screen upper right corner of the second program icon (the red box marked points)



Use instructions, please click the question mark icon in upper right corner of the screen program, (the red box marked points)



CloneDrive icon in the notification area to right-click (or double-click the left mouse button) to display options

# CloneDrive Uninstall

## Step



1. Start assembly CloneDrive Uninstall

2. Implementation of the Uninstall program



3. Click OK to remove CloneDrive is whether to cancel remove the press,



4. Is to remove CloneDrive,

5. Remove the finished, click the Finish button, you can completely CloneDrive removed from the computer,

# Technical Support and Services

---

FNet Corp. is a professional R&D software company. Our software solutions bundled and cooperated with many hardware manufacturers. Therefore, FNet is only in charge of software technical problems and what suggestion you want to give FNet. Please see the contact below. Concerning the hardware problem please kindly connect with hardware manufacturers whose contact please refer to the printing box / the registration card of the hardware commodity.



## After Service

Thank you for purchasing FNet's Product. In order to obtain the complete service from FNet, please complete and return the registration card to us, or register on-line. We will use this information to notify you of new product announcements and product upgrades.



## Technical Support

For additional information you can visit our website at <http://www.GotoFNet.com>. If you need technical support, please e-mail your questions to [service@gotoFNet.com](mailto:service@gotoFNet.com), or fill in [Tech Support Request](#), or our head quarter and branch offices (phone numbers are listed at the last page) for direct assistance. Our professional Customer Support and Technical Support engineers will be glad to provide the service to you.

---

