

USB OVER ETHERNET
H3 USER'S MANUAL





The computer programs provided with the hardware are supplied under a license. The software provided should be used only with the TITAN AnyplaceUSB® over IP HUB series hardware designed and manufactured by TITAN Electronics Inc.

Trademarks

TITAN and the logo, AnyplaceUSB®, are registered trademarks of TITAN Electronics Inc. in Taiwan. Microsoft, Windows, Windows XP, Windows Vista, Windows Server, Windows 7, Windows 8, Windows 10 are trademarks of Microsoft Corporation. All other trademarks and brands are property of their respective owners.

Copyright

Copyright© TITAN Electronics Inc. 2018. All rights are reserved. Reproduction of the manual and software, or replacement the TITAN brand and AnyplaceUSB® logo with any other brand or company name to the manual and software, is prohibited.

Disclaimer

TITAN Electronics Inc. provides this document and computer programs “as is” without warranty of any kind, either expressed or implied, including, but not limited to, its particular purpose. TITAN Electronics Inc. reserves the right to make improvements and changes to this user manual, or to the products, or the computer programs described in this manual, at any time.

Information provided in this manual is intended to be accurate and reliable. However, TITAN Electronics Inc. assumes no responsibility for its use, or for any infringements on the rights of third parties that may result from its use.

This product might include unintentional technical or typographical errors. Changes are periodically made to the information herein to correct such errors, and these changes are incorporated into new editions of the publication.

Contents

1. INTRODUCTION	4
2. FEATURES	5
3. SPECIFICATIONS	6
4. DIAGRAM OF AnyplaceUSB-H3	7
5. INSTALLATION	8
When Working as a Normal USB Hub (not sharing USB devices).....	8
When Sharing USB Devices to a Network (via Internet/LAN/WAN)	8
6. RUNNING AnyplaceUSB SOFTWARE TO SHARE USB DEVICES.....	13
Connect your PC to a Network	13
Connect the USB Devices to AnyplaceUSB-H3 USB Hub	13
Running AnyplaceUSB Software Program in SERVER mode.....	14
Share the USB Devices to Network.....	16
Share the USB Device Automatically	17
Share the USB Device with Manual Options.....	18
Get Status for Shared USB Device.....	21
Un-share the USB Devices.....	22
Refreshing the Information of Shared USB Devices	22
“Minimize” Button	22
7. CONNECT TO REMOTE USB DEVICES	24
Install AnyplaceUSB Software Program in Client Computer	24
Running AnyplaceUSB Software Program in Client Computer	28
Running AnyplaceUSB Software Program in CLIENT Mode.....	29
Connect Remote Shared USB Devices to your Computer	33
Disconnect Remote Shared USB Devices from your Computer	35
Other Buttons in CLIENT Mode.....	36
“Add Server” Button	36
“Add Device” Button.....	38
“Remove” Button.....	40
“Status” Button	40
“Refresh” control button	41
“Minimize” control button.....	41
8. HOW TO SHARE USB DEVICES VIA INTERNET	43
Sharing the USB Devices on Local Network First.....	43
Checking the IP Address for Server Computer	43

Port Forwarding to Shared USB Device	44
9. AnyplaceUSB SOFTWARE UNINSTALLATION	45
Uninstalling AnyplaceUSB Software Program.....	45

1. INTRODUCTION

TITAN's AnyplaceUSB-H3, 3-port SuperSpeed USB 3.1 over IP Hub, is an innovative, robust, industrial-grade USB 3.1 Hub providing the capability of USB devices network sharing across any network including Ethernet, WAN, VLAN, VPN and the Internet. The USB devices connected can be accessed and shared over Ethernet by multiple remote client computers. This AnyplaceUSB USB 3.1 over IP Hub makes it possible to share any number of the USB devices, and it makes them available to the remote computers connected from anywhere in the world. By adding the USB 3.1 over IP Hub to a network computer connected to LAN, WAN, or the Internet, you can then share the USB devices plugged to the Hub. The authorized users are allowed to remotely connect and use the shared USB devices from anywhere, regardless of their distances and locations. Unlike many other USB over IP Servers, with their limitation for usage only on the same network but not functioning over different networks, the AnyplaceUSB USB 3.1 over IP Hub provides the flexibility and ease to allow USB ports sharing across different networks and over the Internet easily. You and other users can connect, access and share the USB devices conveniently, no matter if you are in an office next door, or in another cities, or even in different countries.

AnyplaceUSB-H3 Superspeed USB over IP Hub supports three USB 3.1 Gen. 1 ports. It is designed not only for USB ports expansion but also for extension. The Hub is featured with USB 3.1 over network sharing functionality. The USB devices inserted to this Superspeed USB over IP Hub can be shared and accessed by network computers over wired or wireless network from anyplace in the world. Each USB 3.1 port can transfer data and files at blazing speeds up to 5 Gbps – up to 10 times faster than USB 2.0. The USB 3.1 over IP Hub, when used in conjunction with TITAN's AnyplaceUSB software, enables USB remote connection. The app makes all the USB ports on this Hub available to be accessed, shared and used over IP, LAN, WAN, VLAN, VPN and the Internet from any remote locations.

With simple and user-friendly interface, the AnyplaceUSB program is very easy to install and use. There are no complicated settings to be configured, and nor do you need to change any of your existing network configuration. Only few simple steps will take you instantly to make the USB devices ready to share over any network. Likewise, it is very easy for the client computers to find and connect to all the available remote shared USB devices. To secure the connection between shared USB devices and remote client computers, password authorization is implemented for controlled access. Only authorized clients are permitted to access specified USB devices remotely. In addition, traffic encryption provides further protection on data security and keeps all the information safe to secure connection. Data compression feature is also available to accelerate data transfer speed.

This AnyplaceUSB USB 3.1 over IP Hub is a professional solution to redirect USB devices to remote computers on the network. It provides a convenient and efficient way for USB devices remote connectivity. The Anyplace software provided works with Windows 10, 8.1, 8, 7, Vista, XP, ME, 2000, Windows Server 2016 and Linux.

2. FEATURES

- Empowers USB ports with USB device networking and sharing functionality
- USB 3.1 Gen. 1 over Ethernet Device Hub allows USB devices to be accessed and shared by multiple client computers over network or across the internet
- Network-enables remote USB peripherals and devices as if they were connected directly to the local PC
- Supports wide variety of USB devices, i.e. printers, webcams, conference cams, cameras, fingerprint readers, scanners, barcode scanners, ID card scanners, security dongles, USB dongles, hard drives and flash drives, USB to RS-232/422/485 adapters, iPhones, iPads, Android devices and many more
- USB plug-and-play and hot-swap functions same as onboard USB ports
- USB ports compliant with the USB 3.1 Gen. 1 specification
- Provides three networked USB 3.1 Gen. 1 over Ethernet device ports
- Data rates: USB 3.1 Gen. 1 5Gbps (super speed), USB 2.0 480Mbps (high speed), USB 2.0 12Mbps (full speed) and USB 1.1 1.5Mbps (low speed)
- User-friendly and convenient AnyplaceUSB software program with both server and client functionality
- Shares your USB devices and connects remote shared USB devices over a network at the same time
- Password authorization and traffic encryption for data security and safety
- Any authorized users in an office next door or in another country may remotely access your USB devices through AnyplaceUSB app client
- Supports standard USB webcam functions such as video transfer over a network (Internet/LAN/WAN)
- Supports high speed isochronous USB devices
- Able to share USB security software protection dongles conveniently using features of AnyplaceUSB software program
- Redirects USB devices to virtual machines such as VMWare, Virtual PC, Citrix Xen Desktop, Microsoft Hyper-V, QEMU (KVM), etc. On a virtual machine, easy to establish a passthrough for USB devices from host OS to a guest OS
- Multiple transaction translator (TT) architecture to each USB downstream (DS) port
- LEDs for power and USB status indication
- Includes a DC 12V 1A switching power adapter
- Power supply with latch locking to the hub preventing from accidental disconnection
- Individual port power management
- Overcurrent protection
- Industrial-grade Superspeed USB 3.1 Gen. 1 over Ethernet device hub with SECC metal case for DIN rail mounting. Two mounting holes on bottom case.
- CE, FCC approval

3. SPECIFICATIONS

The tables below show the hardware specifications of the AnyplaceUSB-H3:

Function		Specification
Ports	Downstream	Three
	Upstream	One
LEDs	Power	One
	Port Status	Three
Power Mode		Self-power mode
Output Voltage (per port)		+5VDC
Output Current (per port)		900mA maximum
Operating Temperature		0°C to 45°C
Storage Temperature		-20°C to 70°C
Humidity		0 to 90% RH. Noncondensing
Safety Approvals		CE, FCC
Housing		Metal case
Weight		210g
Dimensions		92mm × 58mm × 29mm (W × L × H)
Input Power Range		9Vdc ~ 30Vdc

System Requirements

Any Windows PC with an available USB port and USB compliant operating system such as Windows 10, 8.1, 8, 7, Vista, XP, ME, 2000, Windows Server 2016.

Note: The USB devices sharing function is available on computers with Windows OS and Linux.

The hub works as a Superspeed USB 3.1 Gen. 1 Hub with Macintosh computer (with an available USB port and Mac OS 8.6 and above). The USB devices sharing function is not available on Mac computers

4. DIAGRAM OF AnyplaceUSB-H3



← 92 mm →



5. INSTALLATION

This 3-port AnyplaceUSB hub is a plug-and-play device that can function as a normal USB hub on your PC system or share USB ports in a network (Internet/LAN/WAN) under a Windows OS computer system through AnyplaceUSB software program. Any USB devices connected to the USB ports of AnyplaceUSB-H3 can be accessed from anywhere in the world (via internet) as if it were attached directly to the remote server computer.

When Working as a Normal USB Hub (not sharing USB devices)

1. Connect the DC power adapter to AnyplaceUSB-H3. The red power LED will illuminate when the hub is receiving power. Connect the upstream port cable to an unused USB port on your computer.
2. After the software drivers are loaded, you will find a new “Generic USB Hub” in Universal Serial Bus controllers under “Device Manager” of the “System Properties” screen. (“Device Manager” can be accessed from Start → Settings → Control Panel → System Properties → Hardware → Device → Device Manager).
3. Connect your USB devices to the downstream ports on AnyplaceUSB-H3. The green USB status LED will illuminate when your USB devices have connected to the USB ports successfully.

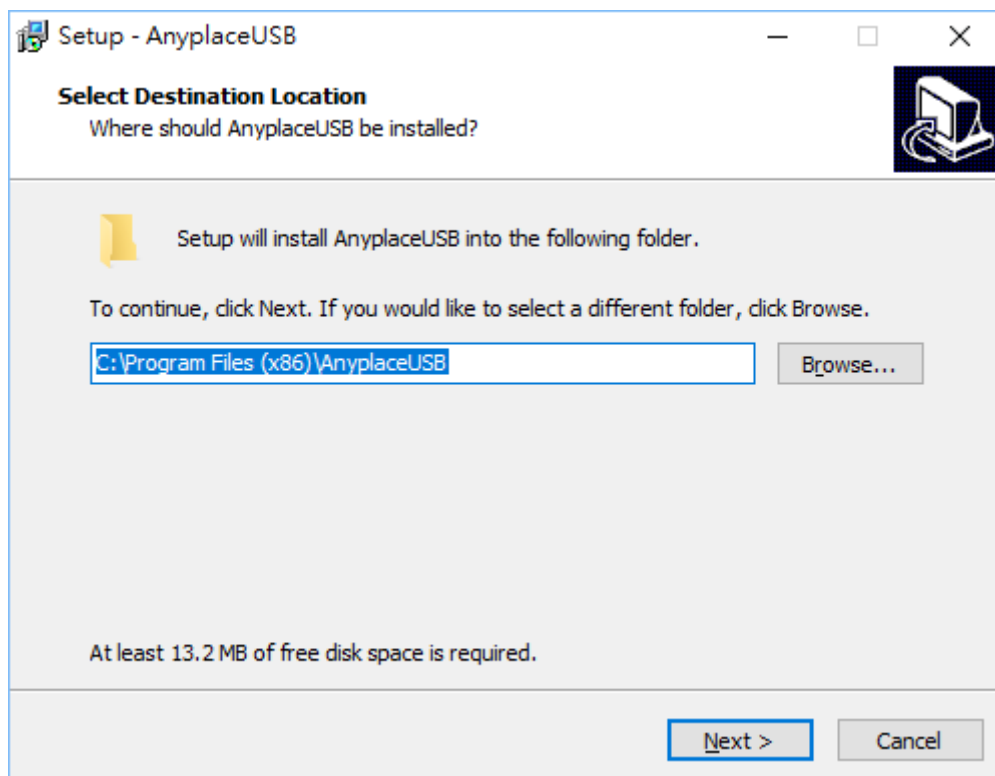
When Sharing USB Devices to a Network (via Internet/LAN/WAN)

The AnyplaceUSB software program is an advanced USB virtualization solution that allows you to share your USB devices over networks easily. Thus, any USB devices connected to the AnyplaceUSB-H3 3-port USB 3.0 hub could be accessed from anywhere in the world (via internet), as if it were attached directly to the remote PC.

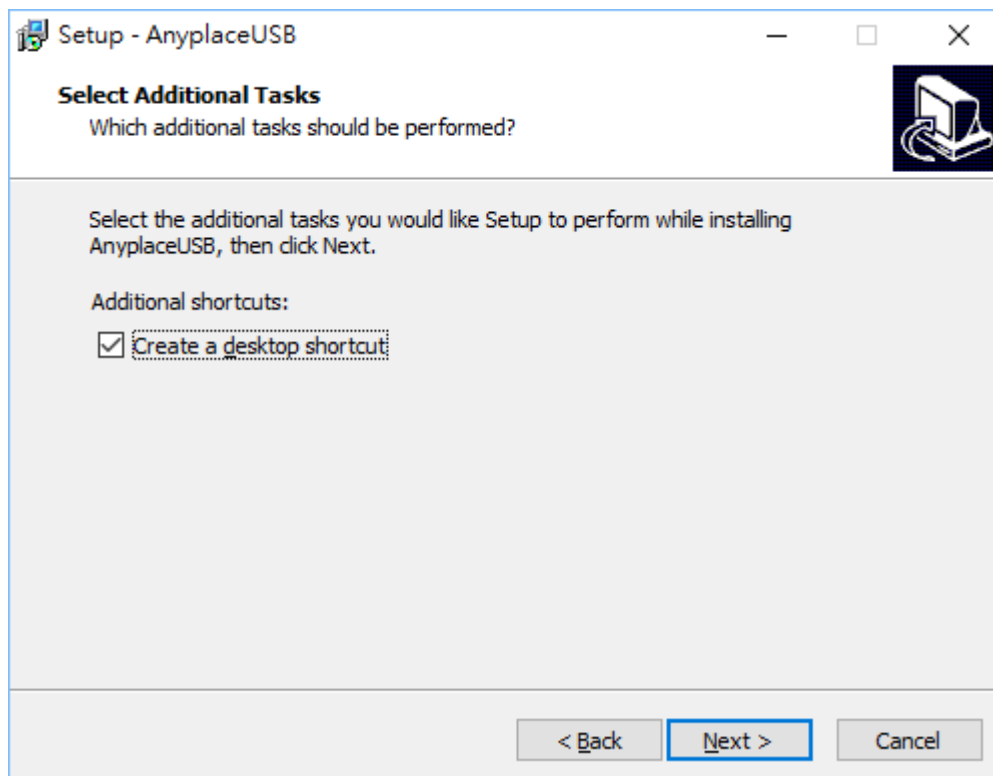
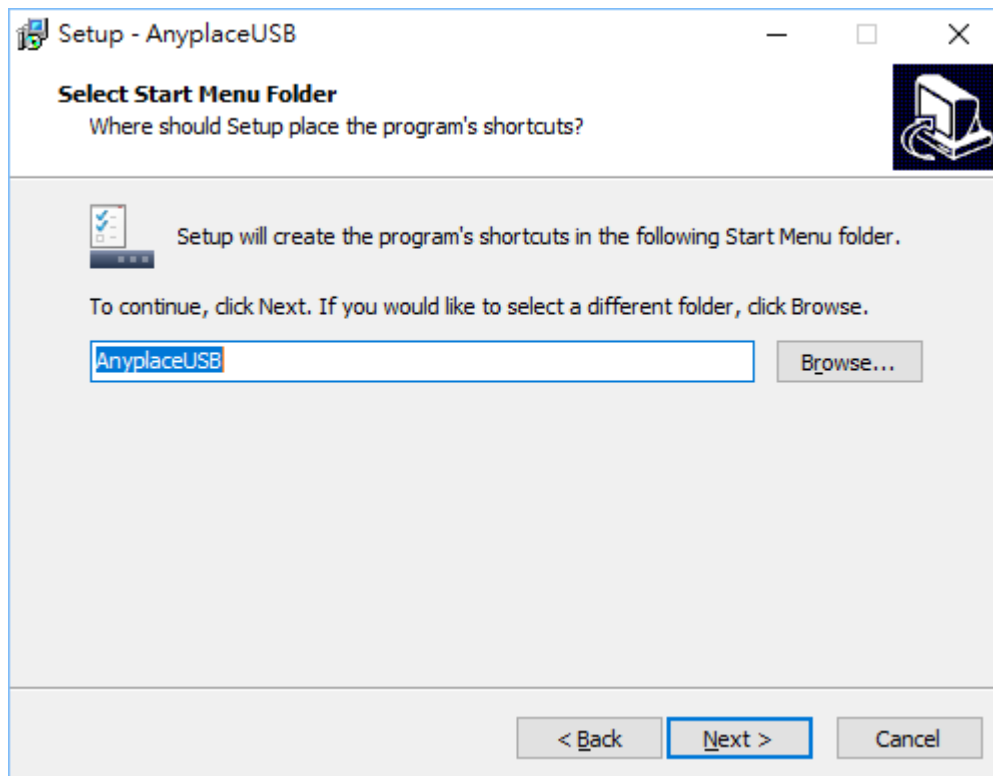
The AnyplaceUSB software program has options to configure your AnyplaceUSB-H3 3-port USB 3.0 hub with the options “SERVER” (to share your USB devices in network) and “CLIENT” (to connect remote USB devices from network).

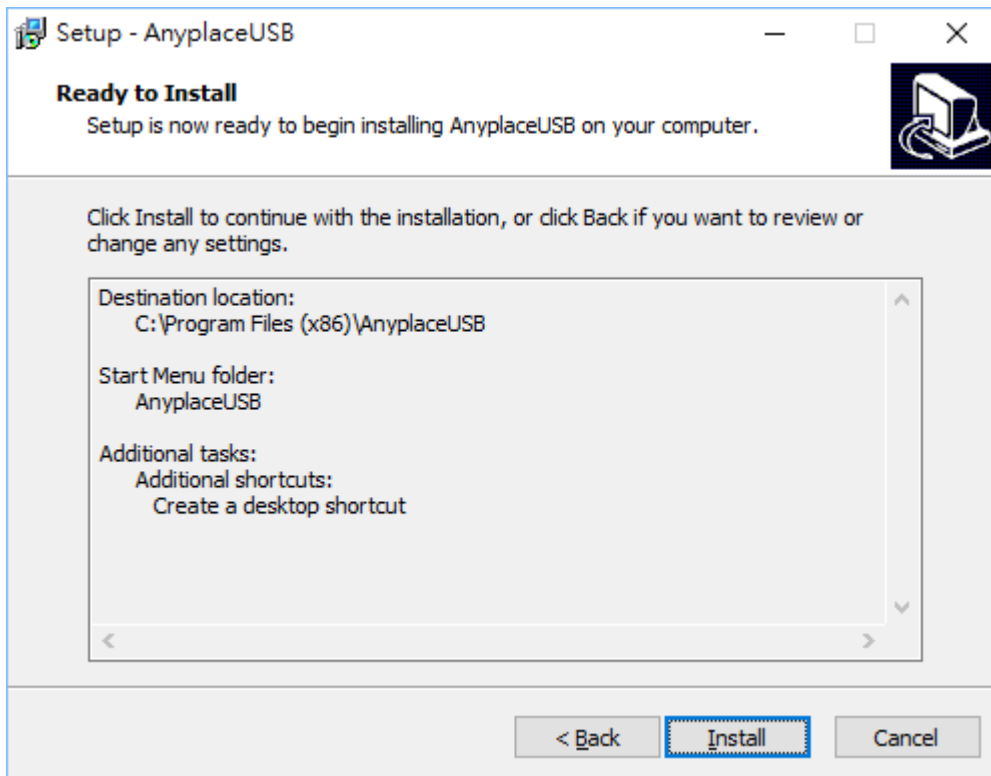
1. Connect the DC power adapter to AnyplaceUSB-H3. The red power LED will illuminate when the hub is receiving power. Connect the upstream port cable to an unused USB port on your computer.
2. After the software drivers are loaded, you will find a new “Generic USB Hub” in Universal Serial Bus controllers under “Device Manager” of the “System Properties” screen. (“Device Manager” can be accessed from Start → Settings → Control Panel → System Properties → Hardware → Device → Device Manager).

3. Connect your USB devices to the downstream ports on AnyplaceUSB-H3. The green USB status LED will illuminate when your USB devices have connected to the USB ports successfully.
4. Insert the software CD into your CD-ROM or DVD-ROM drive.
5. Open files in the CD and double click “AnyplaceUSB_setup” to install AnyplaceUSB software program.
6. When the confirmation for “User Account Control” appears, click “Yes” and the “Setup - AnyplaceUSB” message appears. Click “Next” to proceed with the installation of AnyplaceUSB software program.

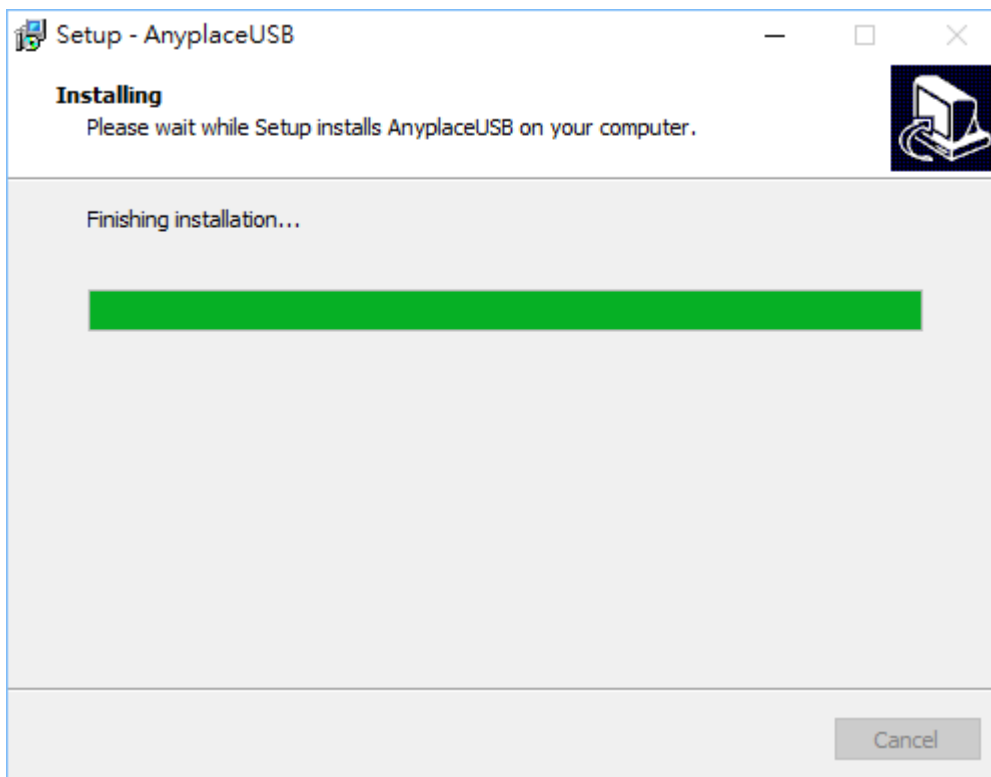


7. After you click “Next”, you will see following information. Click on “Next” and the “Ready to Install” message appears. Click “Install” to install AnyplaceUSB software program.

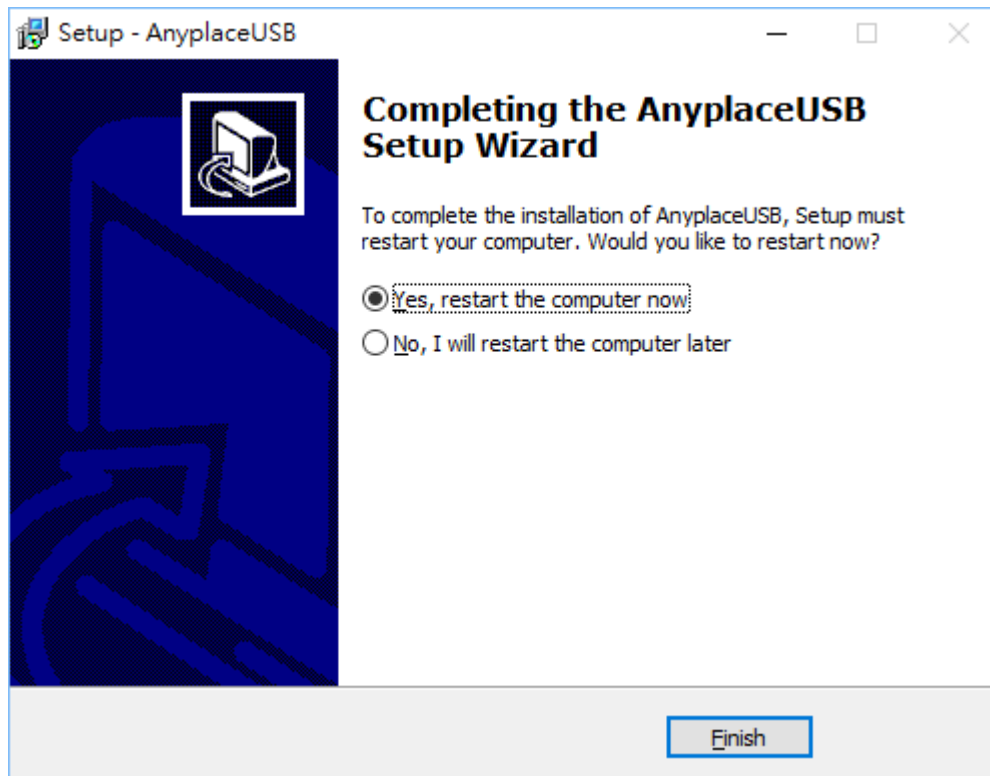




8. After you click “Install” to install AnyplaceUSB software for AnyplaceUSB-H3 3-port USB3.0 hub, you will see the following information.



9. When the message “Completing the AnyplaceUSB Setup Wizard” appears, click “Finish” to restart the computer and finish the AnyplaceUSB software program installation.



6. RUNNING AnyplaceUSB SOFTWARE TO SHARE USB DEVICES

Connect your PC to a Network

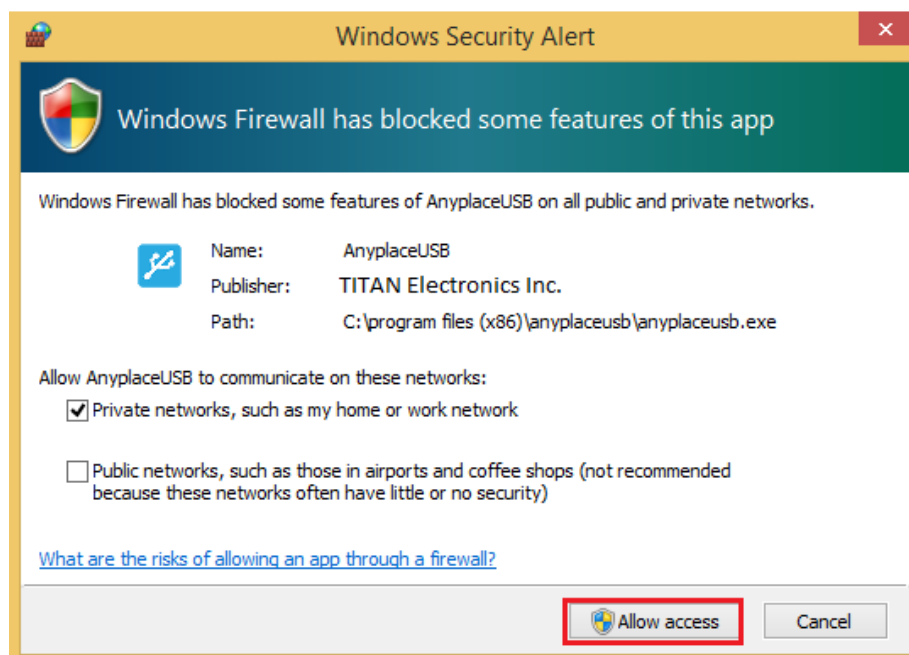
First, connect your PC to a network (Internet/LAN/WAN) environment. This can be a free Ethernet port on your DSL router, Ethernet Hub/Switch, or an 802.11n router/base station.

Connect the USB Devices to AnyplaceUSB-H3 USB Hub

Connect the USB devices to unused USB ports on AnyplaceUSB-H3 USB Hub. After connecting the USB devices to AnyplaceUSB-H3 USB Hub, double click the shortcut icon of “AnyplaceUSB” on the desktop to launch the AnyplaceUSB software program.

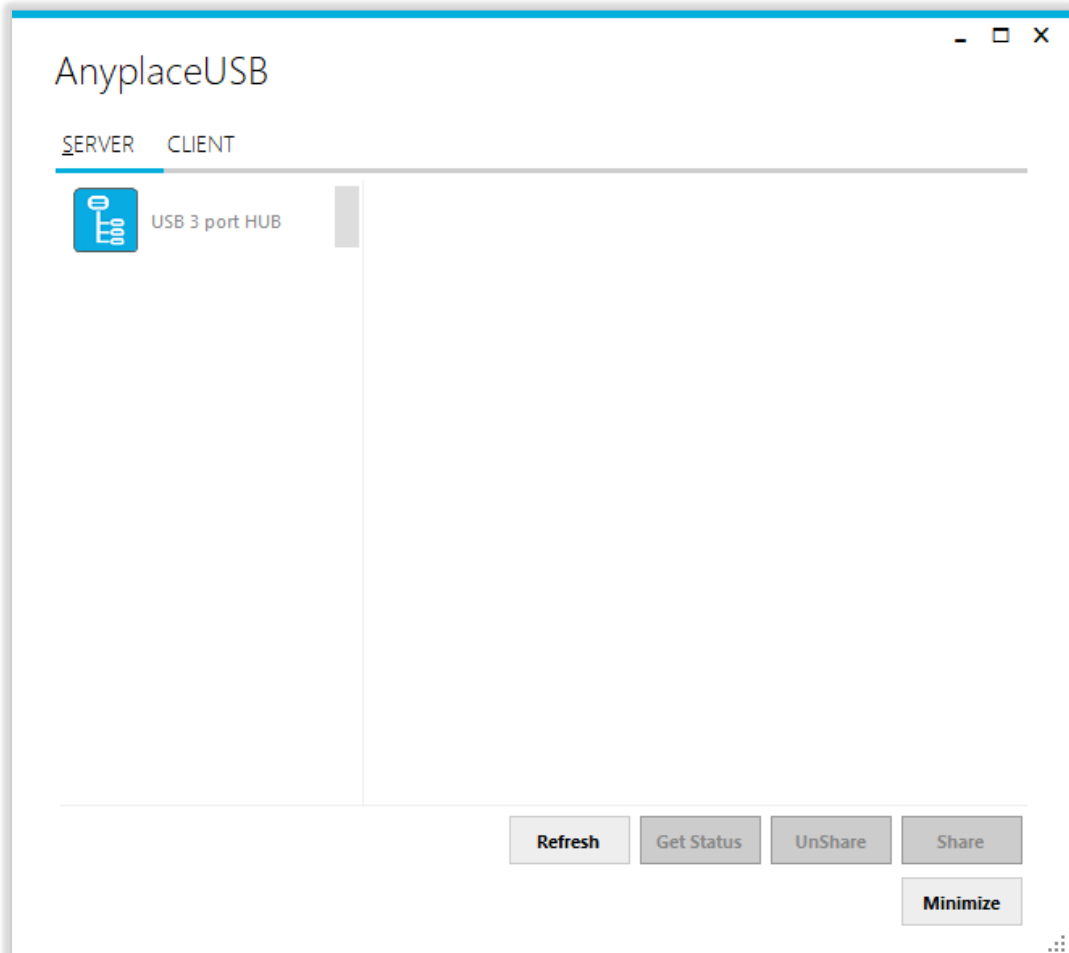


When you start the program for the first time, your Windows OS will prompt you for Firewall access. Please make sure you unblock the software or grant it access, otherwise the program will not work correctly.

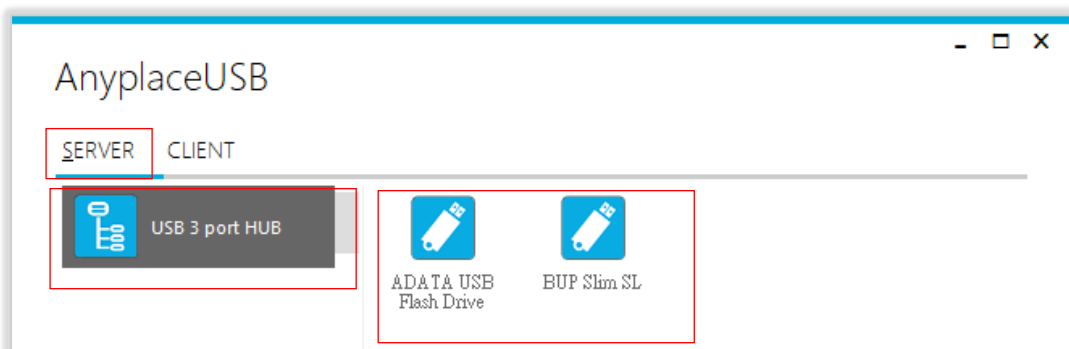


Running AnyplaceUSB Software Program in SERVER mode

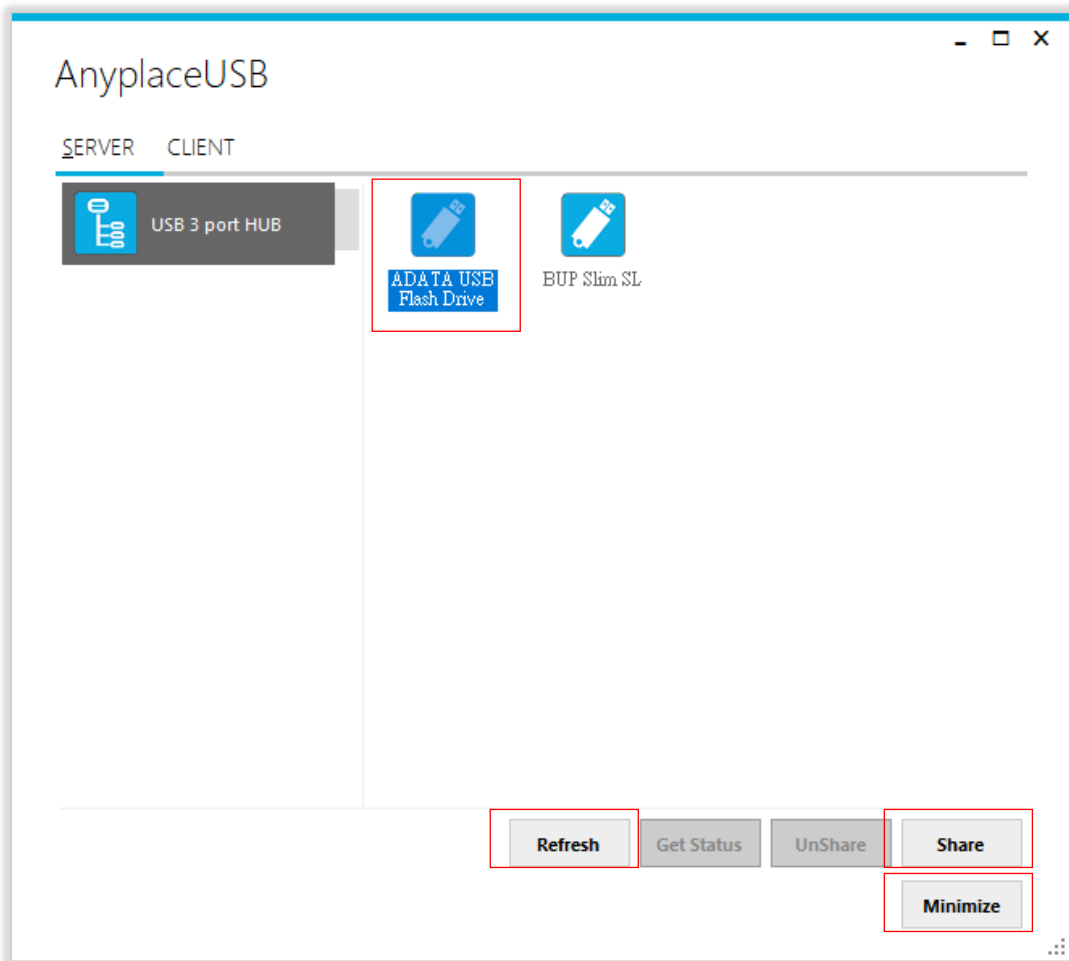
Once you have started up the AnyplaceUSB software program, you will see the AnyplaceUSB-H3 green power LED will illuminate (red -> green) and the main window as shown below.



The main window consists of two toolbars (SERVER and CLIENT). When you are under the "SERVER" toolbar, you will see a "USB 3 port HUB" on the left side of the main window. Click on this "USB 3 port HUB" and a tree view will display a list of all the USB devices connected on the AnyplaceUSB-H3 USB Hub on the right side of the main window.



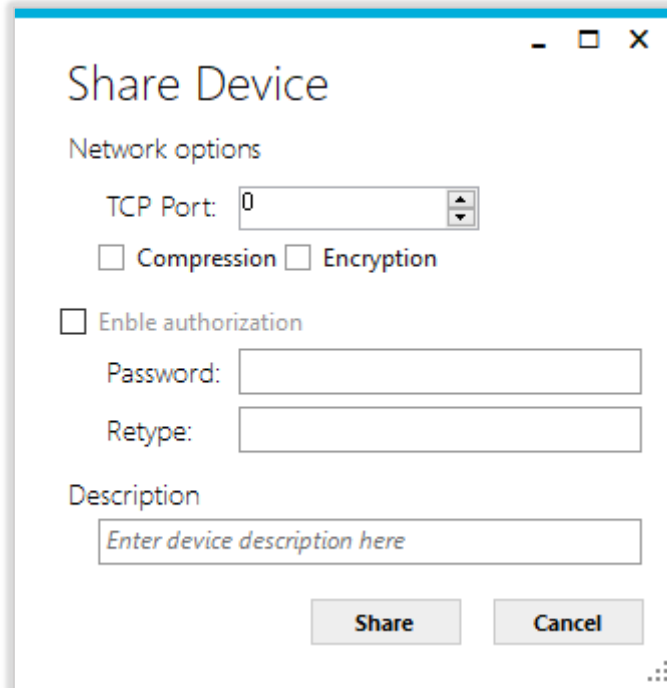
After clicking any USB device connected to the AnyplaceUSB-H3 USB Hub, the “Share” button will become available.



Note: AnyplaceUSB software program must not be closed in order to be able to continue sharing devices. Please consider using the “Minimize” button described in the later sections.

Share the USB Devices to Network

To share the USB device to a network (Internet/LAN/WAN), click the **“Share”** button and a “Share Device” control panel for this USB device will appear. Following shows the “Share Device” control panel:

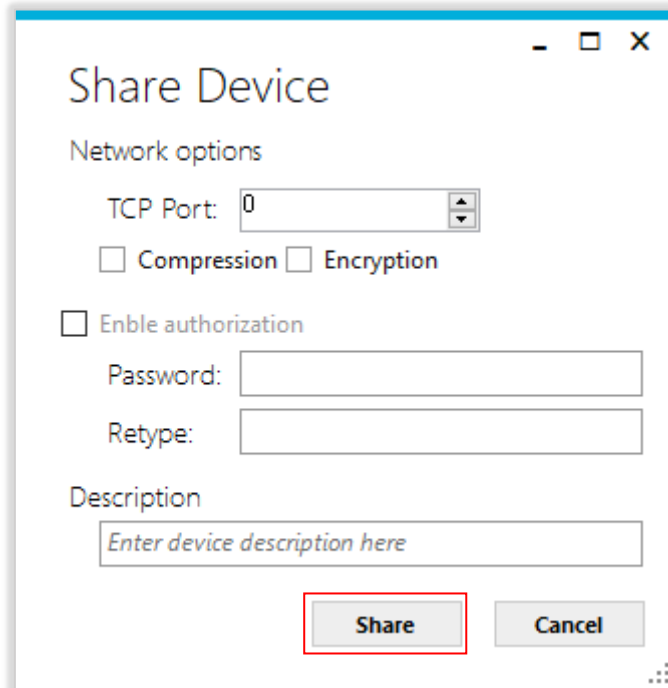


The image shows a Windows-style dialog box titled "Share Device". It has a standard window title bar with minimize, maximize, and close buttons. The dialog is divided into several sections:

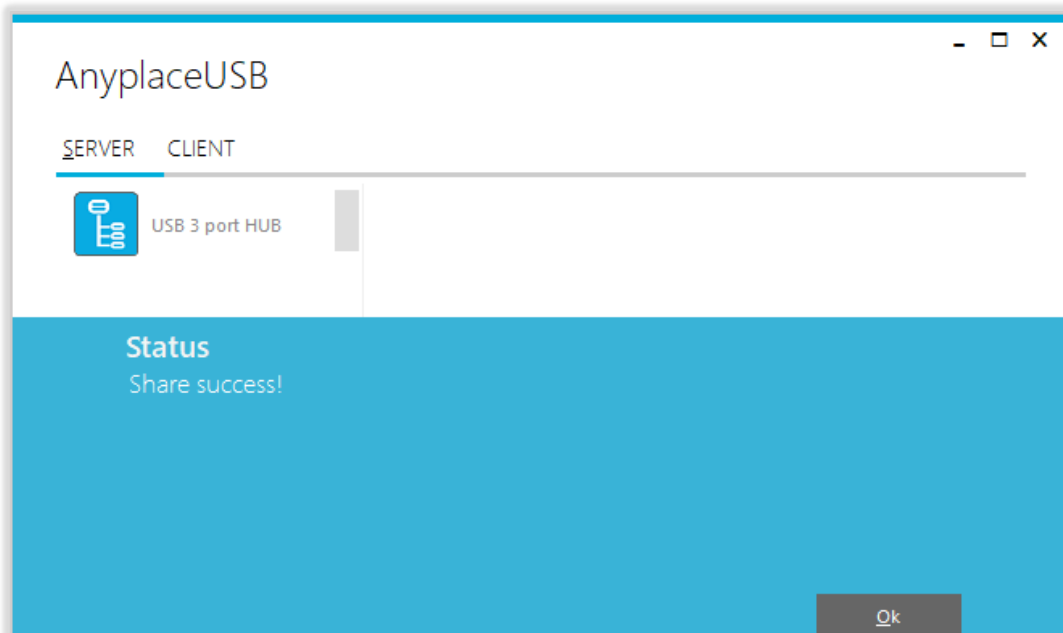
- Network options:**
 - TCP Port: A numeric input field containing the value "0".
 - Two checkboxes: Compression and Encryption.
 - Enable authorization.
 - Two text input fields: "Password:" and "Retype:".
- Description:**
 - A text input field with the placeholder text "Enter device description here".
- Buttons:** Two buttons at the bottom: "Share" and "Cancel".
- Footer:** A small icon of three dots in the bottom right corner.

Share the USB Device Automatically

You can share the USB device automatically; under “Share Device” control panel to click “Share” button and the AnyplaceUSB software program will set the TCP port number automatically.

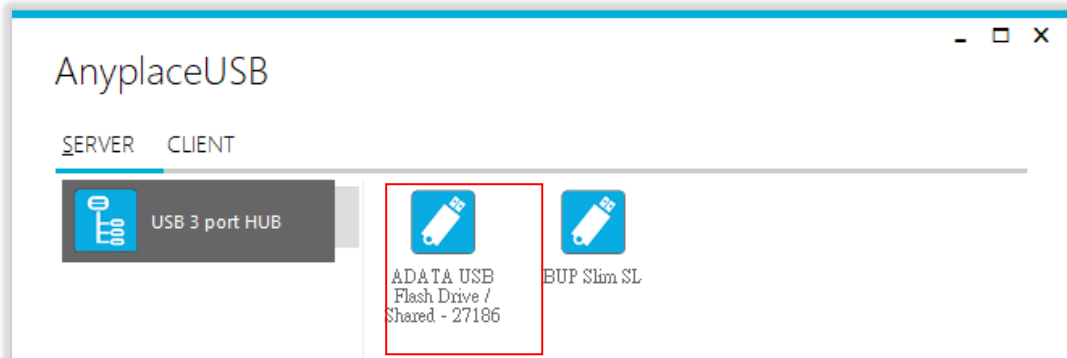


After clicking “Share”, you will see the “Share success!” message. Click “Ok” to finish the USB device sharing setup. After clicking “Ok”, the AnyplaceUSB software program will be restarted.



Note: The share USB device process resembles sharing your USB device to other users on the network. However, unlike file sharing, a USB device become inaccessible for local usage once it is shared.

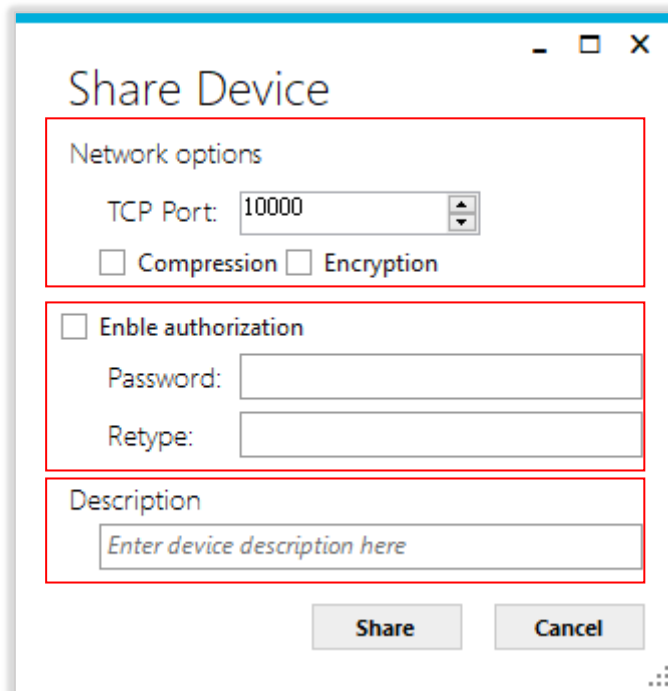
Click on the “USB 3 port HUB” again to display all the USB devices connected to the AnyplaceUSB-H3 USB Hub. You will see that the shared USB device will have the words “Shared” and its TCP port number appended to the name of the device (e.g. /Shared-27186)



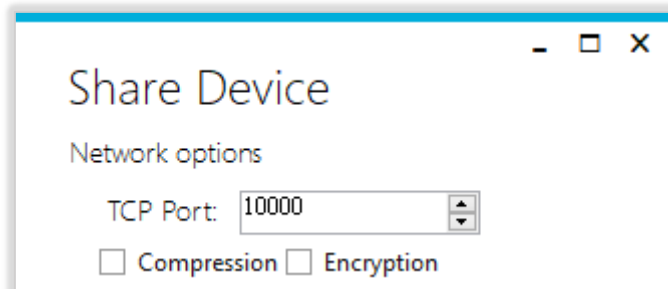
Note: AnyplaceUSB software program must not be closed in order to be able to continue sharing devices. Please consider using the “Minimize” button described in the later sections.

Share the USB Device with Manual Options

Under “Share Device” control panel, you can find three options: “Network options”, “Enable authorization” and “Description”.



Under “Network options” option, you can set TCP port number manually, from TCP port by inputting the TCP port number, which will be used in connection.



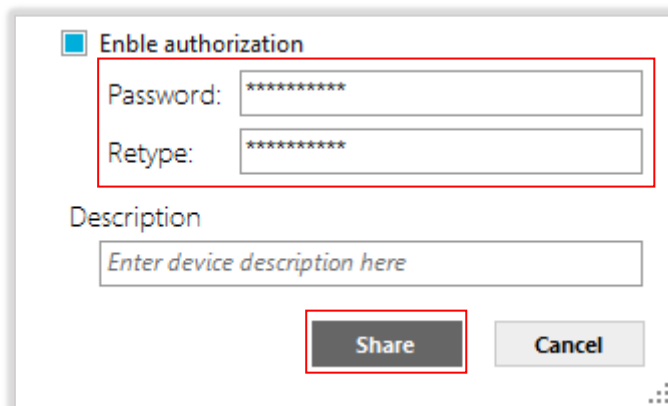
You can also enable traffic encryption by ticking the encryption box Encryption . It is recommended for security reasons. All data sent will be encrypted, although it may slightly slow down the communication speed.

The traffic compression option helps speed up interaction with certain types of USB devices and reduces Internet traffic. You can enable traffic compression option by ticking the compression box Compression . You may find this useful for USB devices which transfer data in uncompressed formats, like scanners. It is recommended to not use this option for USB devices which transfer incompressible types of data, such as isochronous USB devices (e.g. audio cards, web cams, etc.).

For example, web cam video compression is enabled by default, and further compression may degrade video quality.

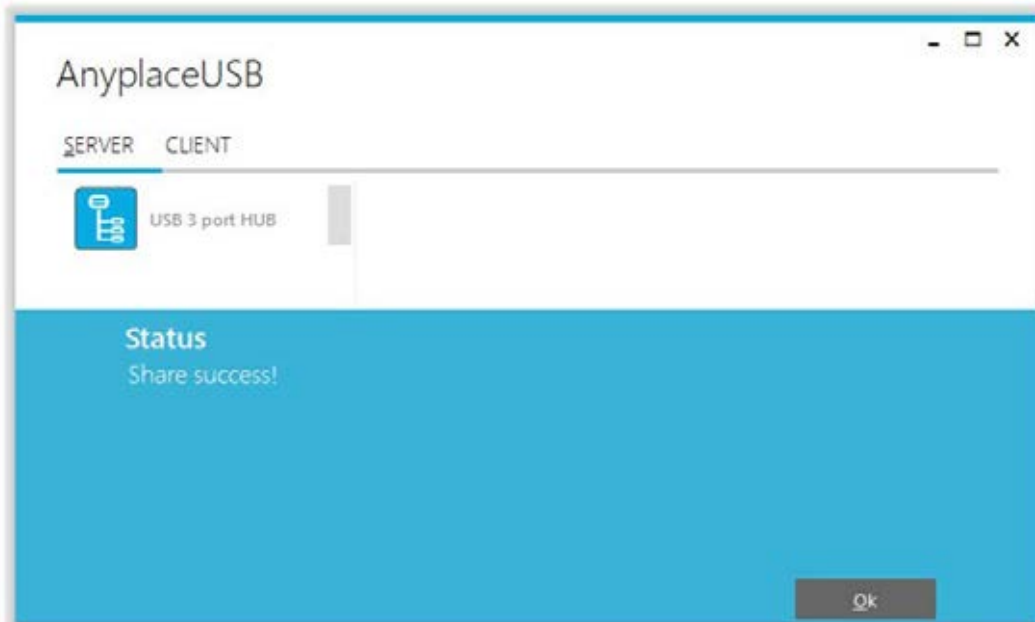
Under “Enable authorization” option, by enabling password authorization, you can use a password to secure connection. The client computer should paste the same password in order to establish connection.

Tick the “Enable authorization” box and enter your desired “Password” twice to confirm the password setting. After clicking “Share”, the shared USB device will have password protection.

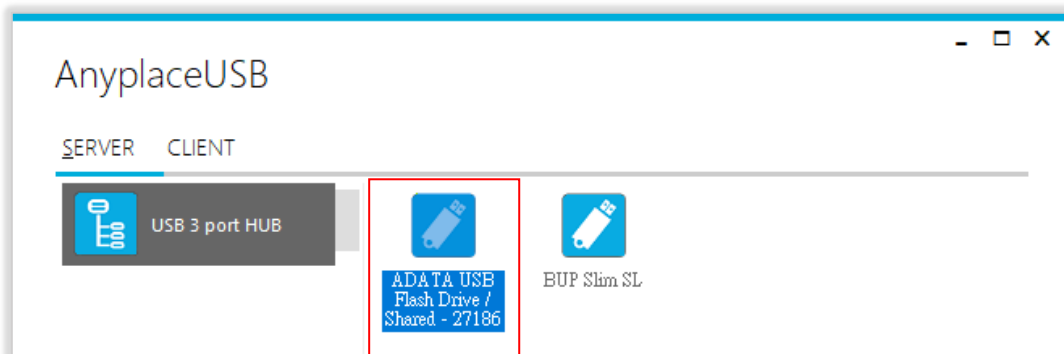


Under “Description” option, you can enter a text to add a description for your shared USB device. After sharing this USB device, the client computer will be able to see the description next to the USB device.

After finishing all option settings and clicking “Share”, you will see the “Share success!” message. Click “Ok” to finish the USB device sharing setup. After clicking “Ok”, the AnyplaceUSB software program will be restarted.

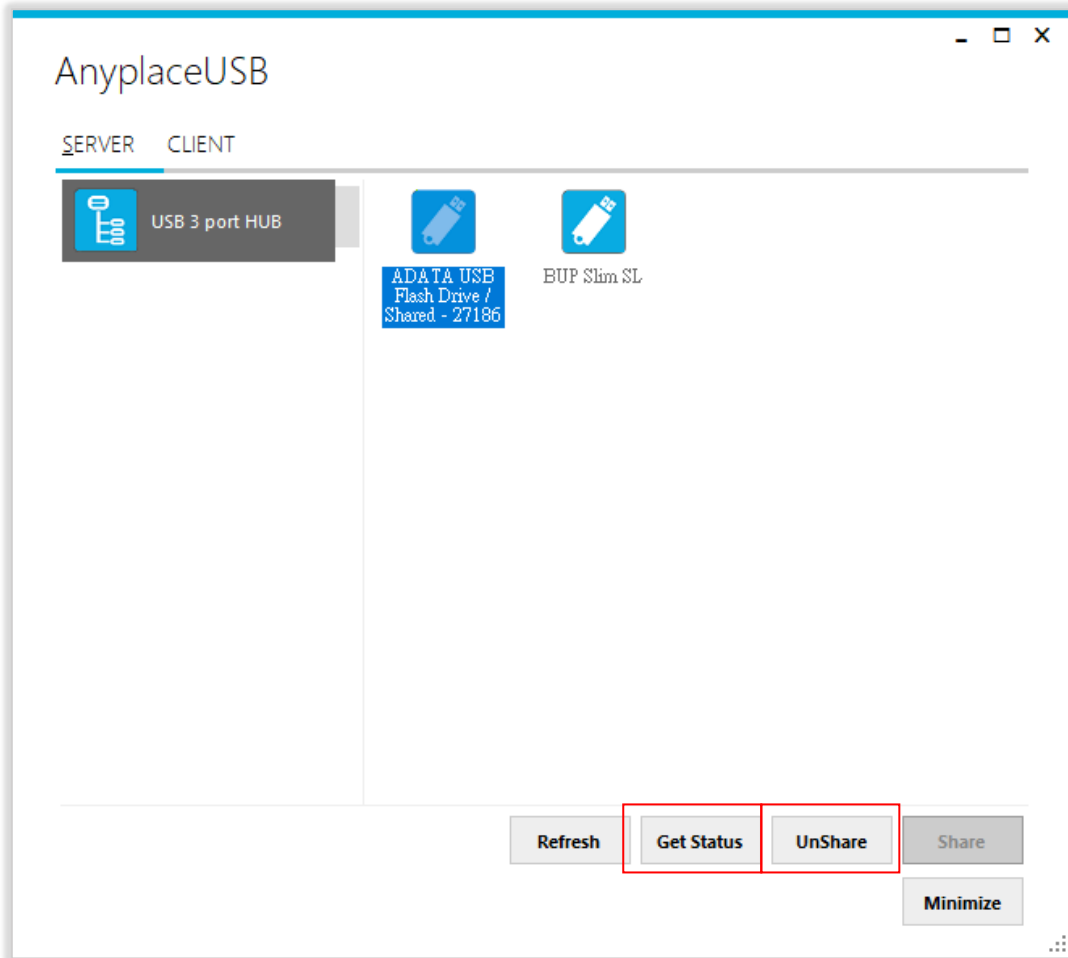


Click on the “USB 3 port HUB” again to display all the USB devices connected to the AnyplaceUSB-H3 USB Hub. You will see that the shared USB device will have the words “Shared” and its TCP port number appended to the name of the device (e.g. /Shared-49666)



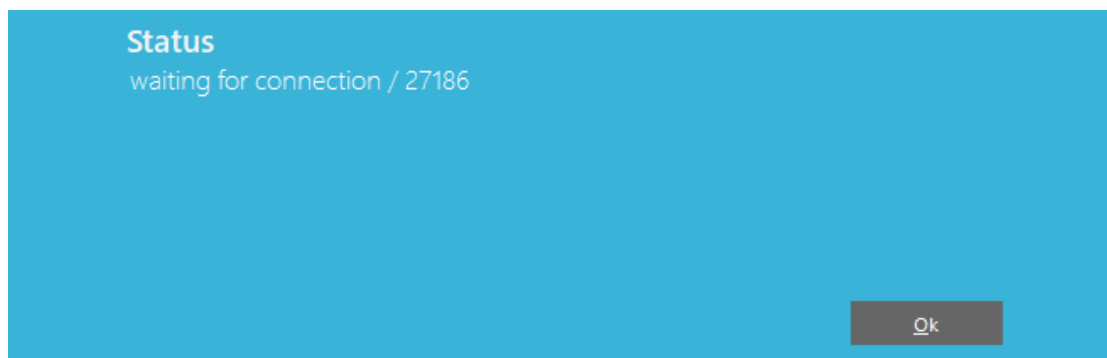
Note: AnyplaceUSB software program must not be closed in order to be able to continue sharing devices. Please consider using the “Minimize” button described in the later sections.

After sharing USB device successfully, the buttons “UnShare” and “Get Status” becomes available.

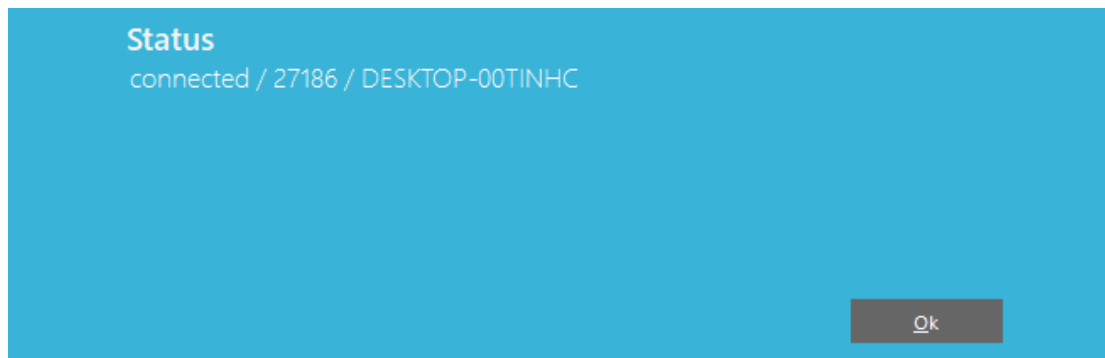


Get Status for Shared USB Device

Click the “**Get Status**” button to get the status of shared USB device. When this USB device is not being used by other users on the network, it will show “waiting for connection/27186(TCP port number)”.



When this USB device is connected by other users on the network (Internet/LAN/WAN), it will show “connected/27186(TCP port number)/DESKTOP-00TINHC (client PC name or IP address)”.

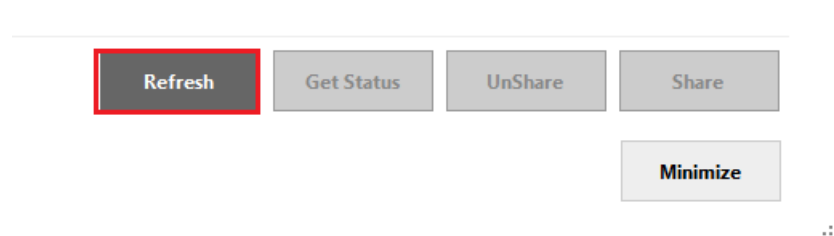


Un-share the USB Devices

To un-share the USB device from a network (Internet/LAN/WAN), click the “UnShare” button to make this USB device inaccessible remotely. After clicking “UnShare”, the AnyplaceUSB software program will be restarted and the USB device will be available locally.

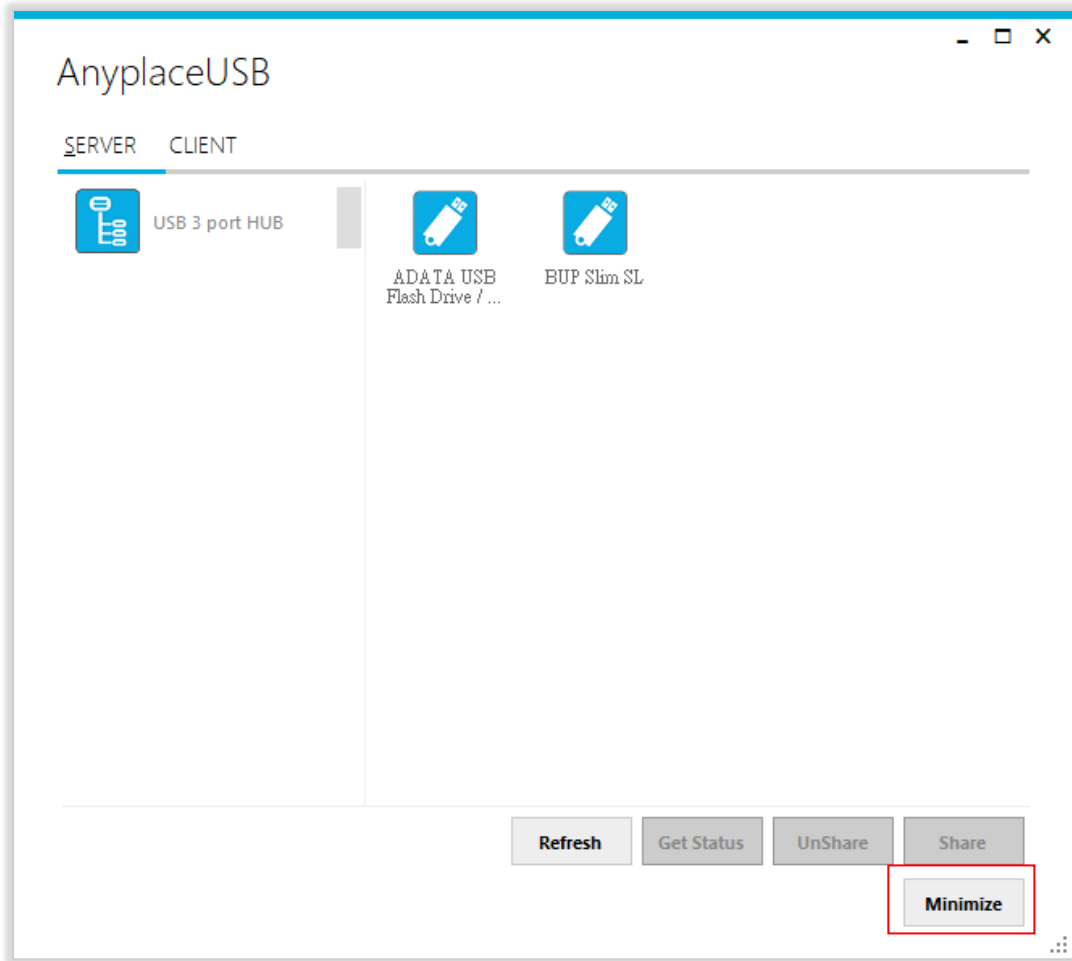
Refreshing the Information of Shared USB Devices

The information on the main window of AnyplaceUSB software program may be incorrect or absent in some cases. In case this happens, you can click the “Refresh” button to reload the information for shared USB devices.

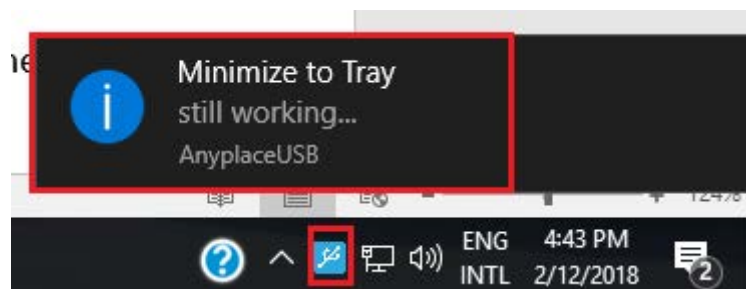


“Minimize” Button

You can click on the “Minimize” button to minimize the window of AnyplaceUSB software program to the system tray.



After clicking on “Minimize”, you will see “Minimize to Tray” message and the window of AnyplaceUSB software program will move to the system tray.



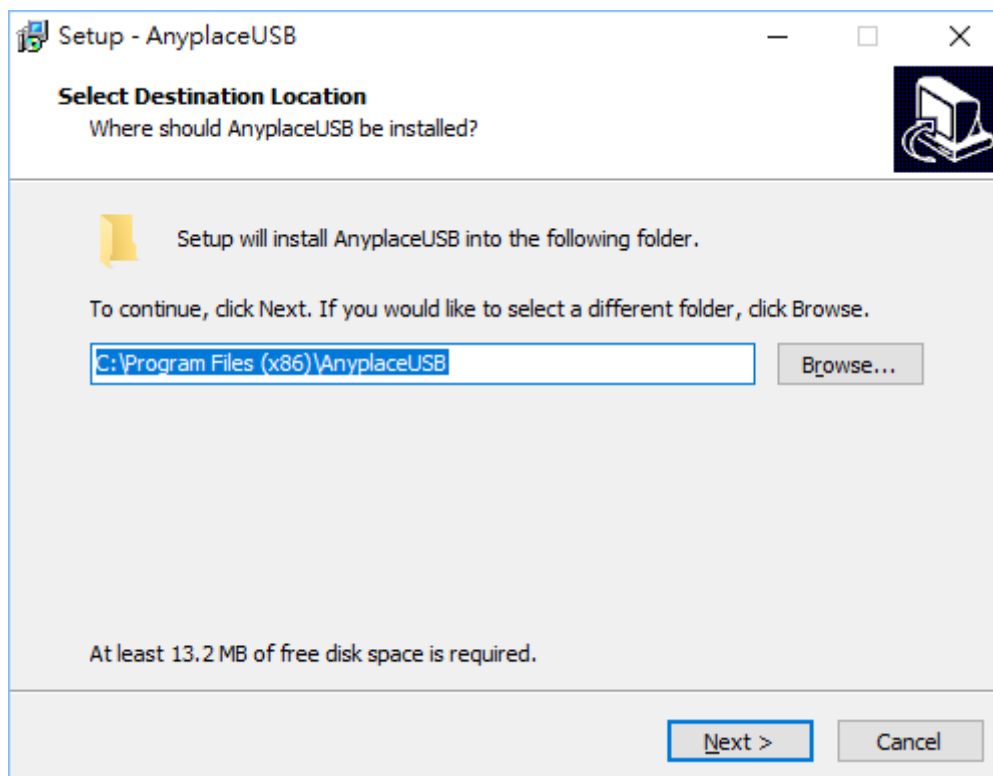
7. CONNECT TO REMOTE USB DEVICES

Install AnyplaceUSB Software Program in Client Computer

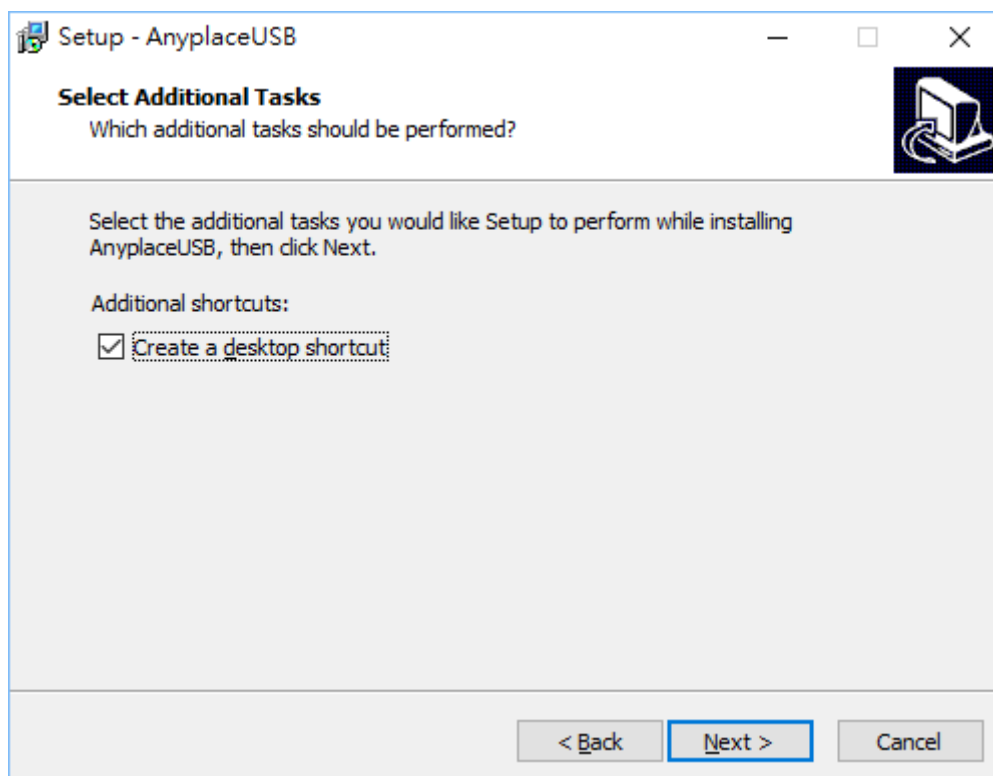
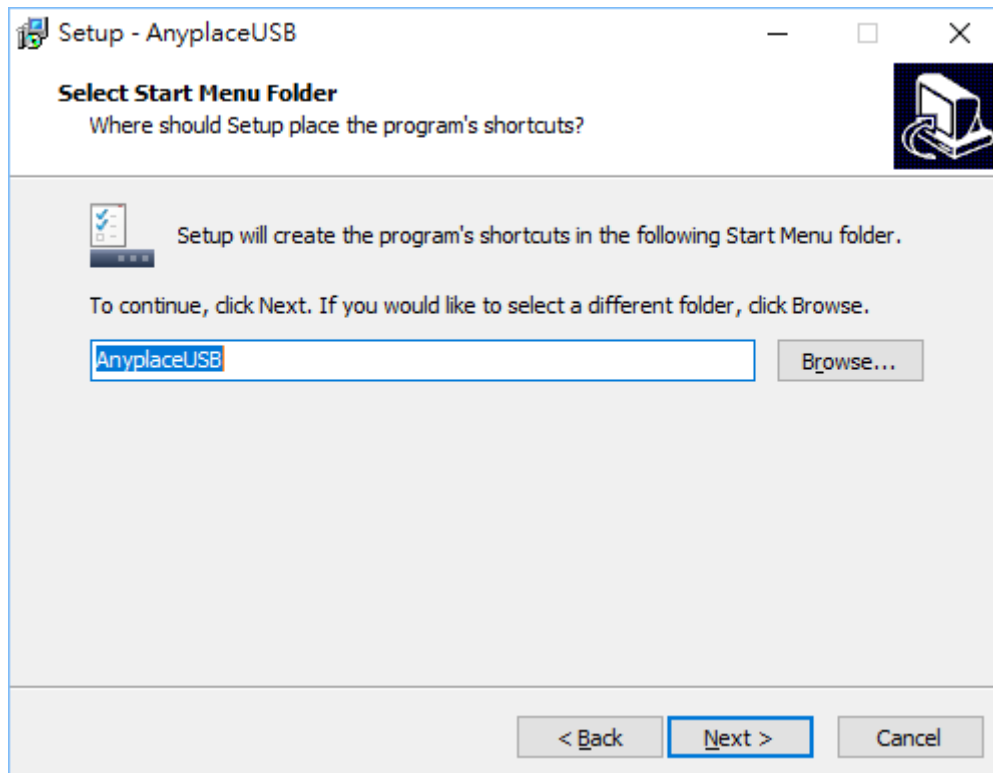
Insert the software CD into your DVD-ROM drive or download the AnyplaceUSB software program from www.titan.tw.

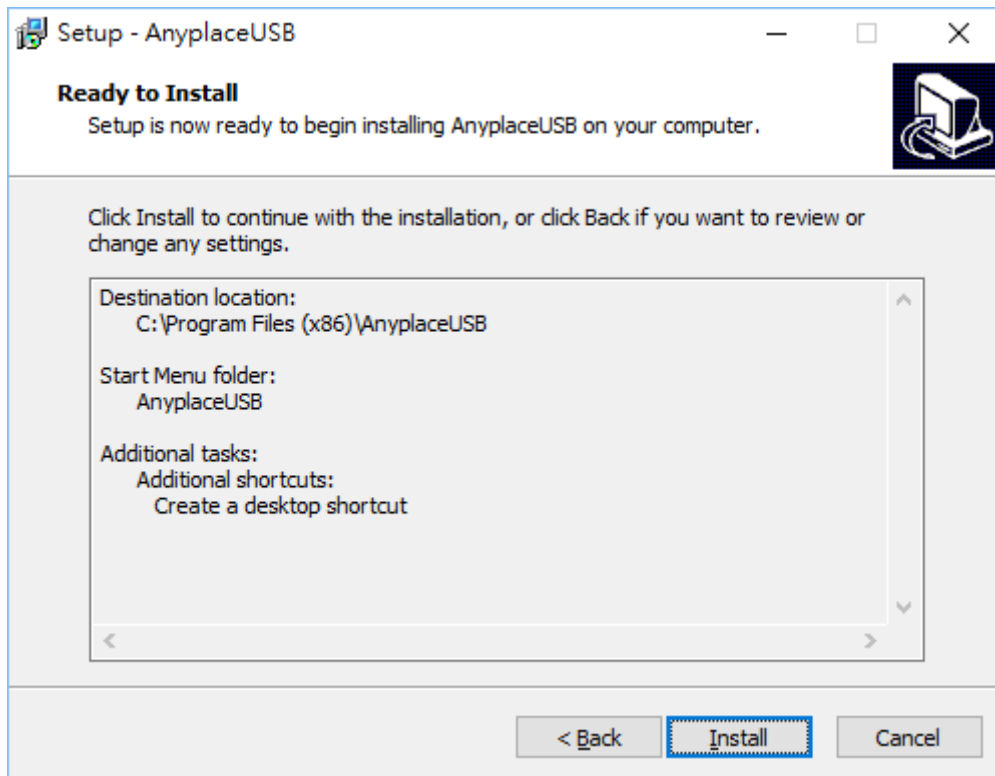
Open the “AnyplaceUSB_setup” file to install AnyplaceUSB software program.

When the confirmation for “User Account Control” appears, click “Yes” and the “Setup - AnyplaceUSB” message appears. Click “Next” to proceed with the installation of AnyplaceUSB software program.

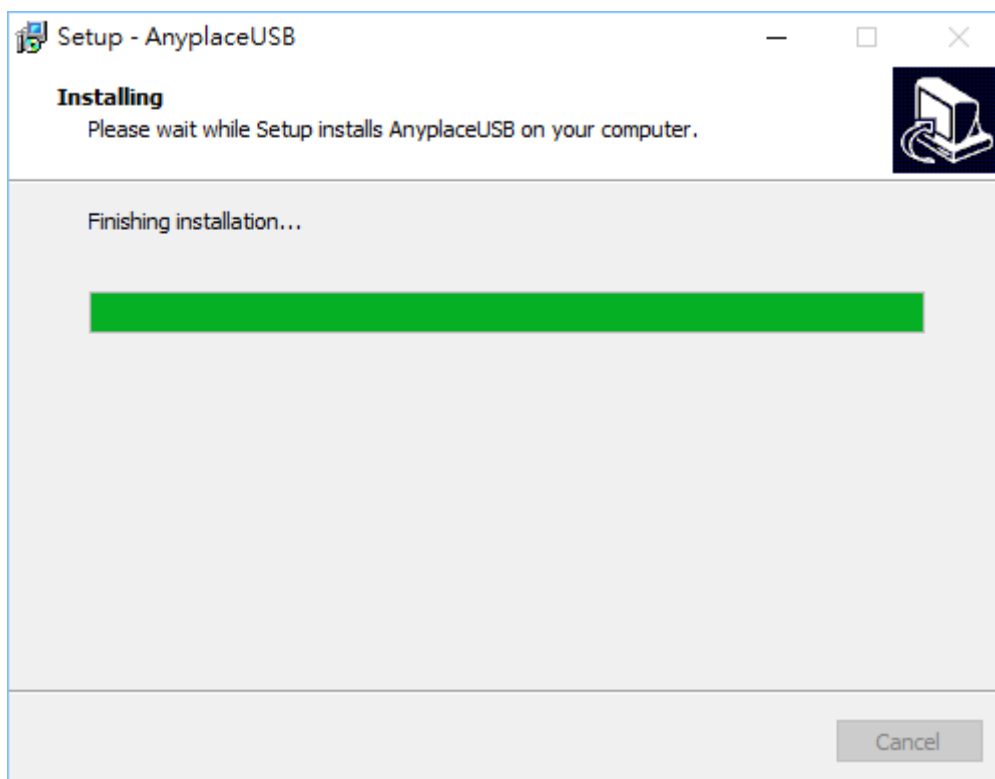


After you click “Next”, you will see following information. Click on “Next” and the “Ready to Install” message appears. Click “Install” to install AnyplaceUSB software.



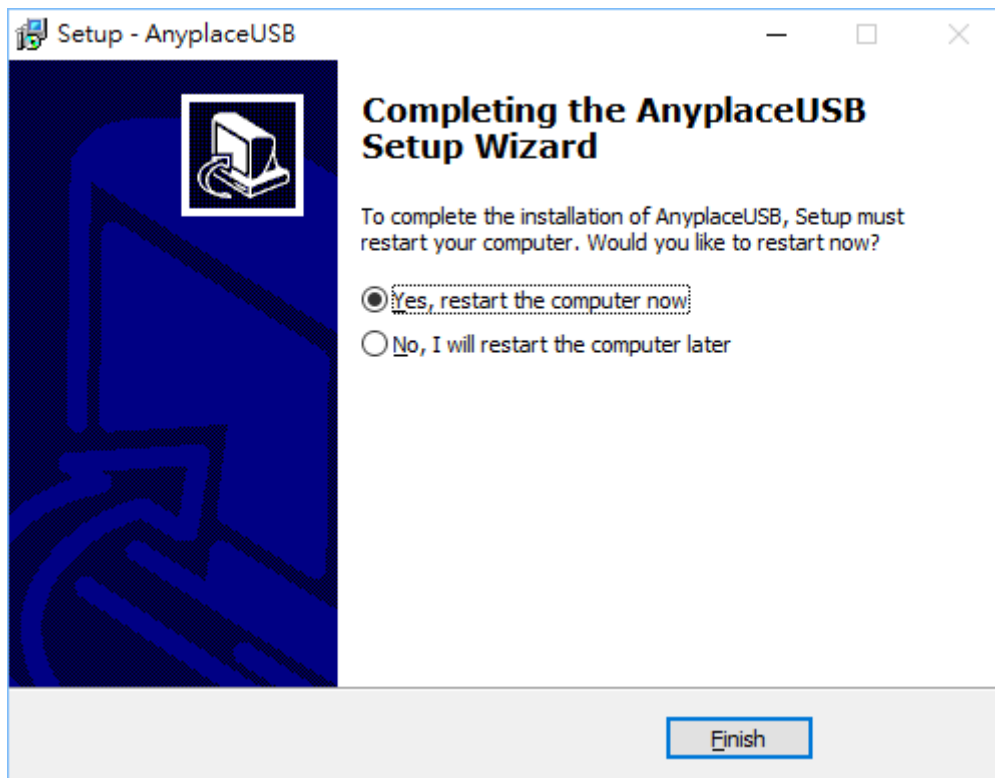


After you click “Install” to install AnyplaceUSB software program in the client computer, you will see the following information.



When the message “Completing the AnyplaceUSB Setup Wizard” appears, click “Finish” to restart the computer and finish the AnyplaceUSB software program

installation.



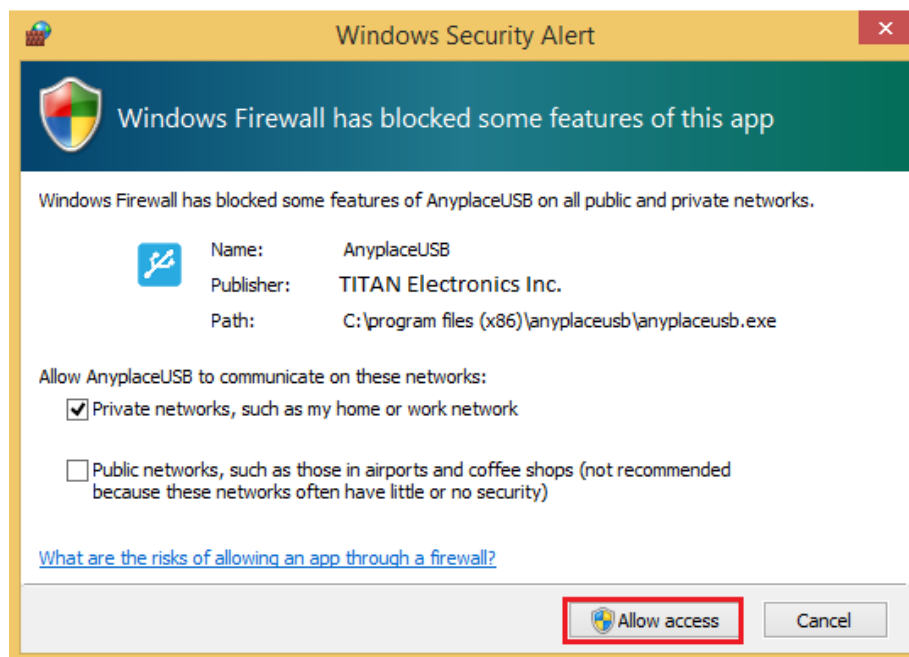
Running AnyplaceUSB Software Program in Client Computer

Please connect your client computer to a network (Internet/LAN/WAN) environment.

Double click the shortcut icon of “AnyplaceUSB” on your client computer to launch AnyplaceUSB software program.



When you start the program for the first time, your Windows OS will prompt you for Firewall access. Please make sure you unblock the software or grant it access, otherwise the program will not work correctly.

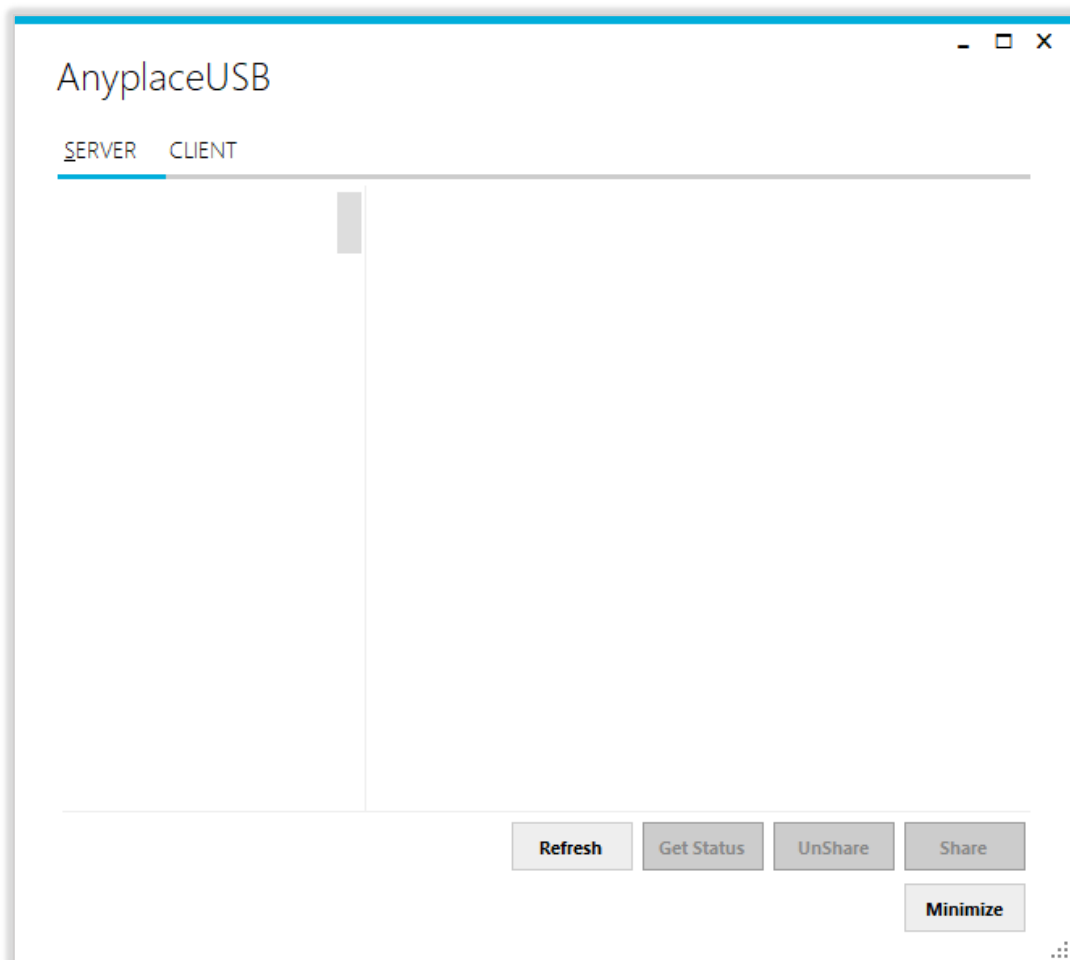


Running AnyplaceUSB Software Program in CLIENT Mode

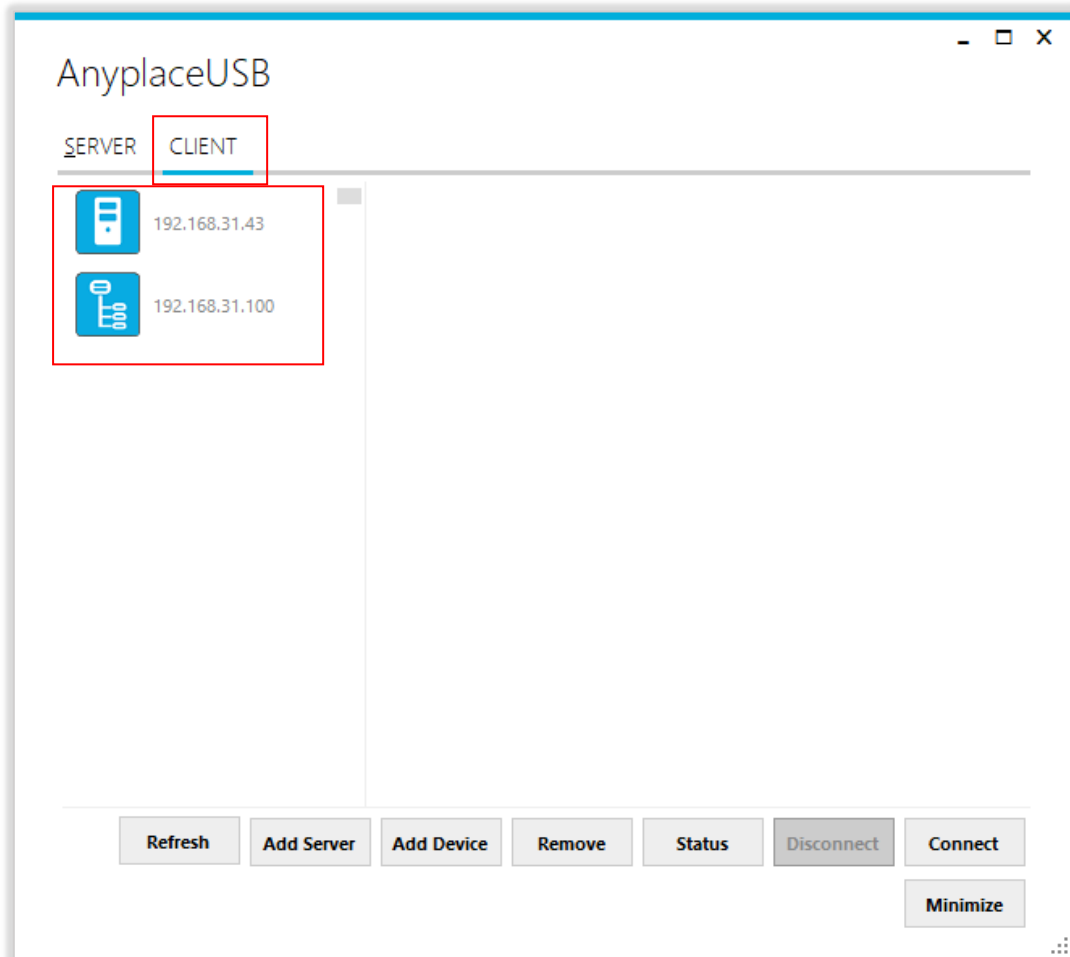
The AnyplaceUSB software program client mode can discover USB servers installed in your local network automatically, in most cases there is no need to specify remote IP address or the hostname of the server computer. Select the correct server from the list in order to connect to the remote shared USB devices.

To connect from client computer to a remote USB device shared on the server computer, you should first find available shared USB devices and add them into client computer. The shared USB devices are detected by AnyplaceUSB software program.

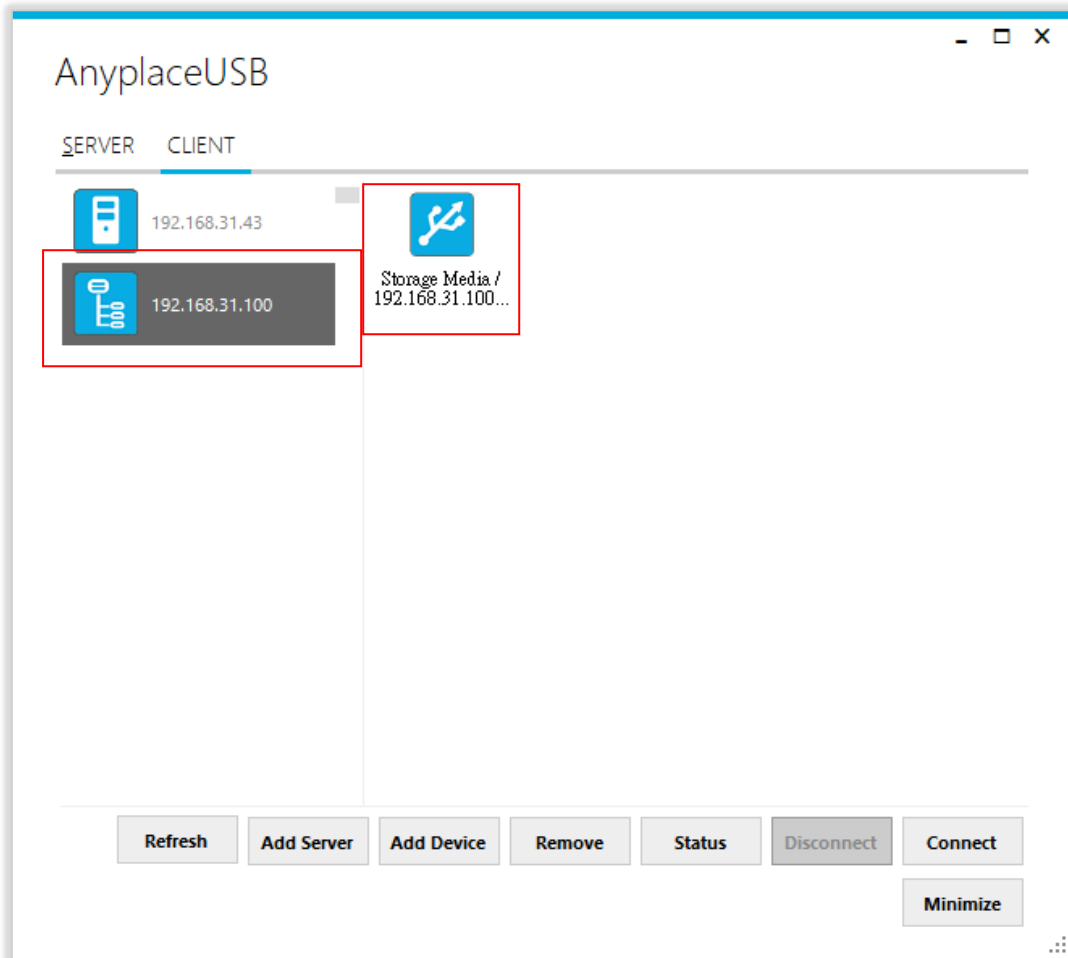
Once you have started up the AnyplaceUSB software program, you will see the main window as shown below.



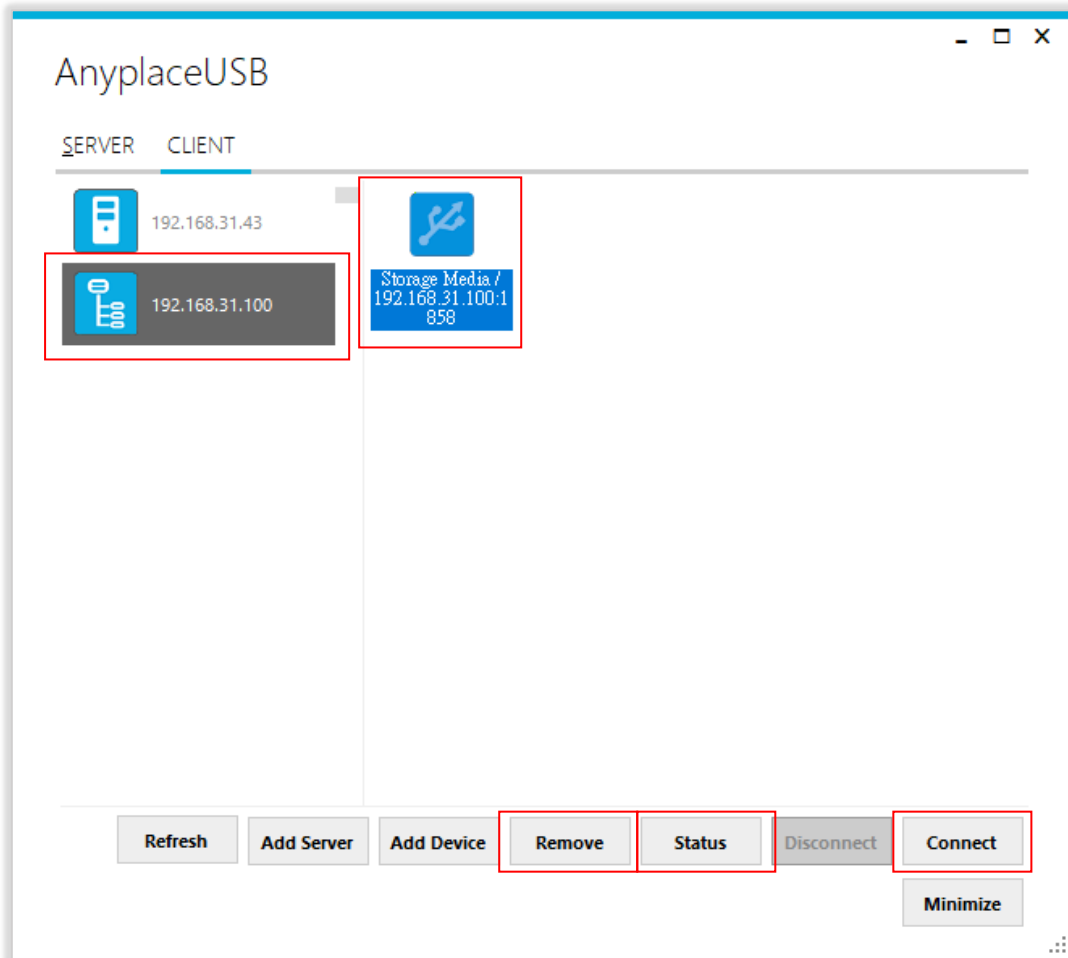
The main window consists of two toolbars (SERVER and CLIENT). Select “CLIENT” to connect to remote shared USB devices. After selecting “CLIENT” you will see remote server computers with their IP addresses on the left of the main window, which displays all remote server computers discovered on the network.



Click on any remote server computer and the remote shared USB devices will be detected automatically and displayed.



After you click any remote shared USB device shared by the AnyplaceUSB USB Hub, the **“Remove”**, **“Status”**, **“Connect”** buttons become available.

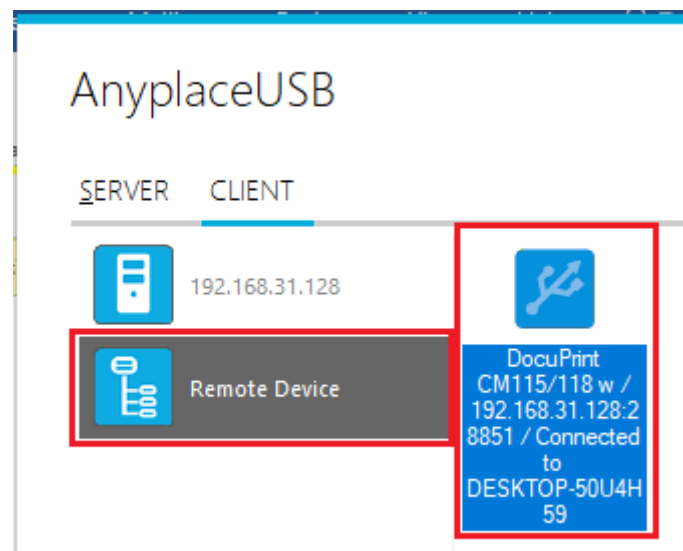


Connect Remote Shared USB Devices to your Computer

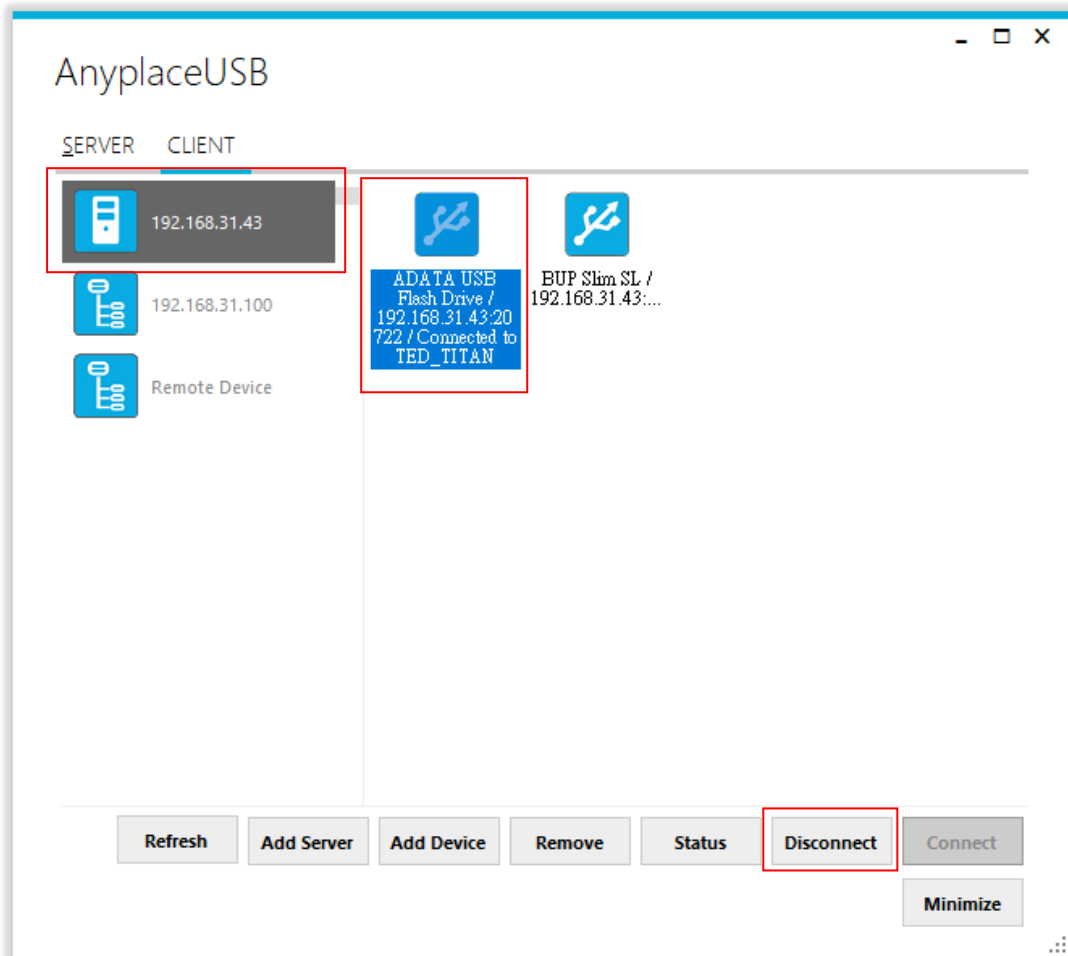
To connect the remote shared USB devices to your computer (client), click the **“Connect”** button to connect this remote shared USB device, and you will see a **“Connect success!”** to indicate success. This may take a while depending on the speed of your server and client computers, and the speed of your network. Please refrain from rapidly connecting to and disconnecting from the same device in a short period of time, as this may be a cause for communication errors. Click **“Ok”** to finish connecting to the remote shared USB device to your PC system.



After connecting to the remote shared USB device in your computer successfully, you will see a **“Remote Device”** on the left of the main window. Click on this **“Remote Device”** and you will find a duplicated remote shared USB device. The computer will install drivers for this remote shared USB device automatically. However, if your Windows OS doesn't support the driver for this remote shared USB device, you need to install the driver manually.



To check the remote shared USB device, please click on this remote shared USB device again. You will see that this shared USB device is connected to your computer and the “Disconnect” button is available.



Other computers in the same network will also see this remote shared USB device connected to your computer, and will not be able to connect to this remote shared USB device unless you disconnect it.

Disconnect Remote Shared USB Devices from your Computer

To disconnect a remote shared USB device from your computer, click the **“Disconnect”** button to disconnect this remote shared USB device from your computer, and you will see a **“Disconnect success!”** message to indicate success. Click **“Ok”** to finish disconnecting the remote shared USB devices from your computer.



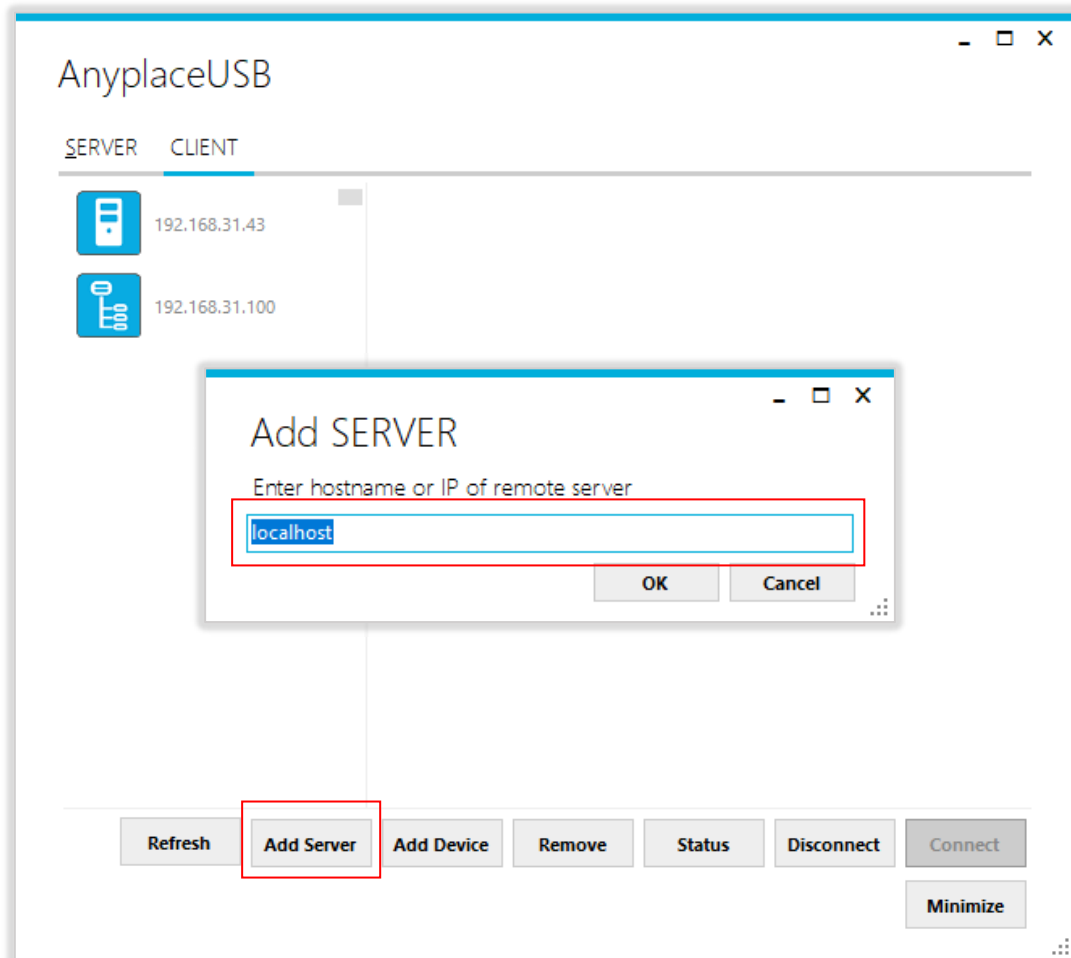
Note1: The USB device disconnected from remote sharing still remains shared on the server computer. Therefore, it is inaccessible through the local usage of server computer.

Note2: After the USB device disconnected from remote shared server computer, please wait about 2 minutes to unload the pervious driver before connecting the USB device again, otherwise the USB device will not work correctly.

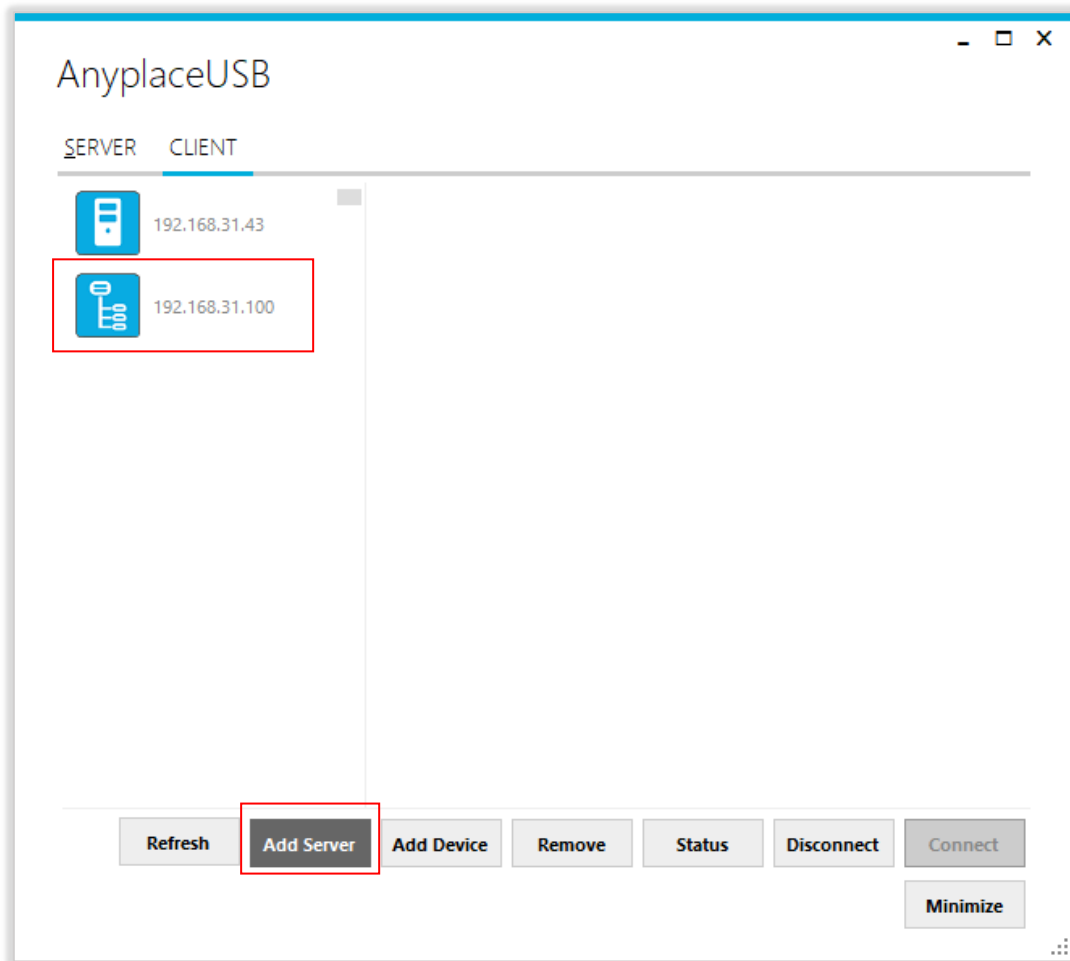
Other Buttons in CLIENT Mode

“Add Server” Button

If the remote server computer is not detected automatically, for example, when server computer is located in a different subnet, you can search for it manually. Click “Add Server”, and enter host name or IP address of the remote server computer, then click “OK” to finish adding a remote server computer manually.

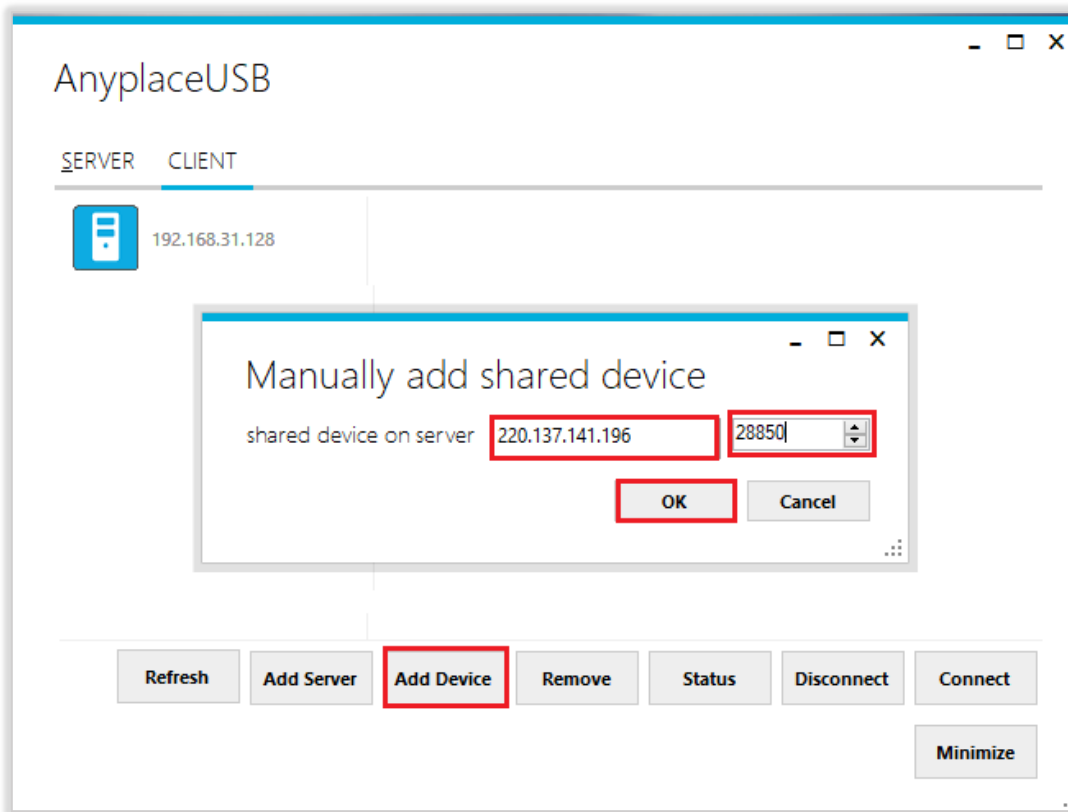


After adding a remote server computer manually, you will see the remote server computer (with IP address) added on the left of the main window.

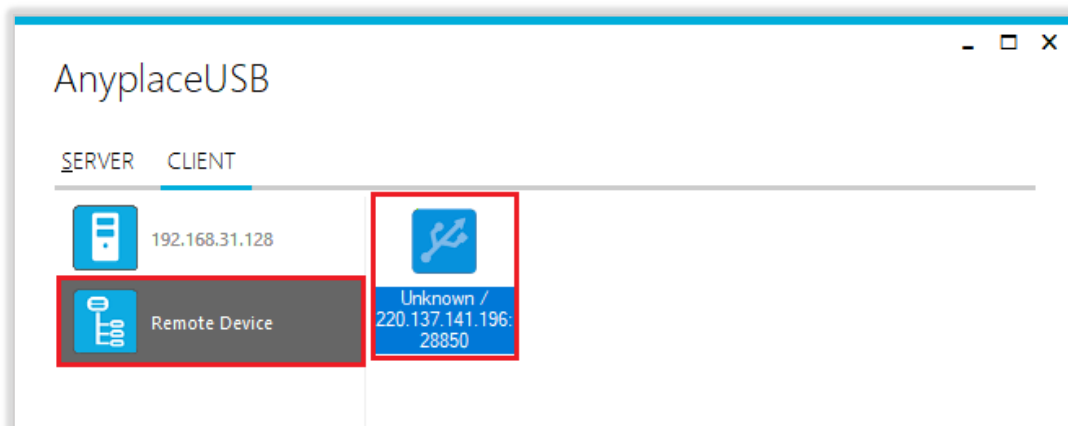


“Add Device” Button

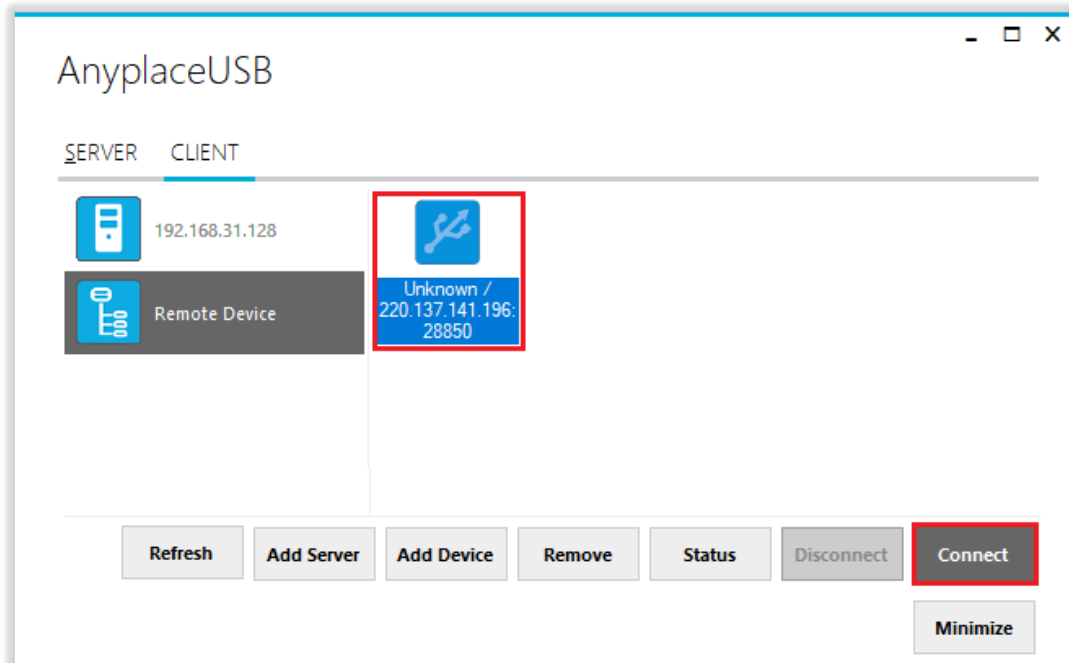
You can also use the “Add Device” button, in case you know the IP address of remote server computer and the TCP port number, on which a USB device is shared. Click “Add Device”, enter host name or IP address of the remote server computer, and the TCP port number of the remote shared USB device in “Manually add shared device”. Click “OK” to finish adding a remote shared USB device in your computer manually.



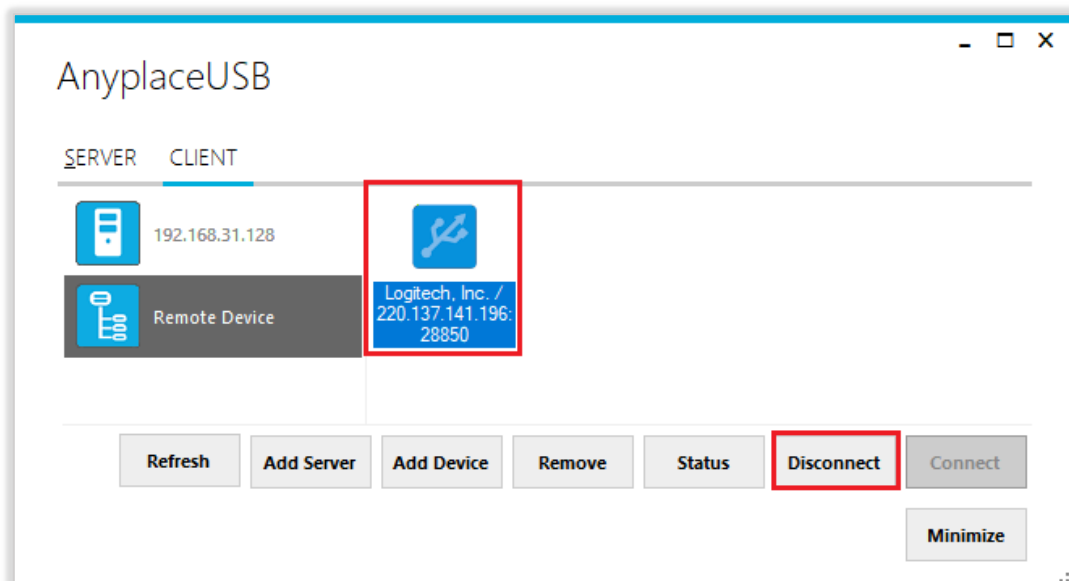
When you add a “Remote Device” manually, you will see an “Unknown” device added under “Remote Device”.



Click **“Connect”** to connect to this unknown USB device, and you will see a “Connect success!” message to indicate success. Click **“Ok”** to finish connecting to the “Unknown” USB device into your computer.

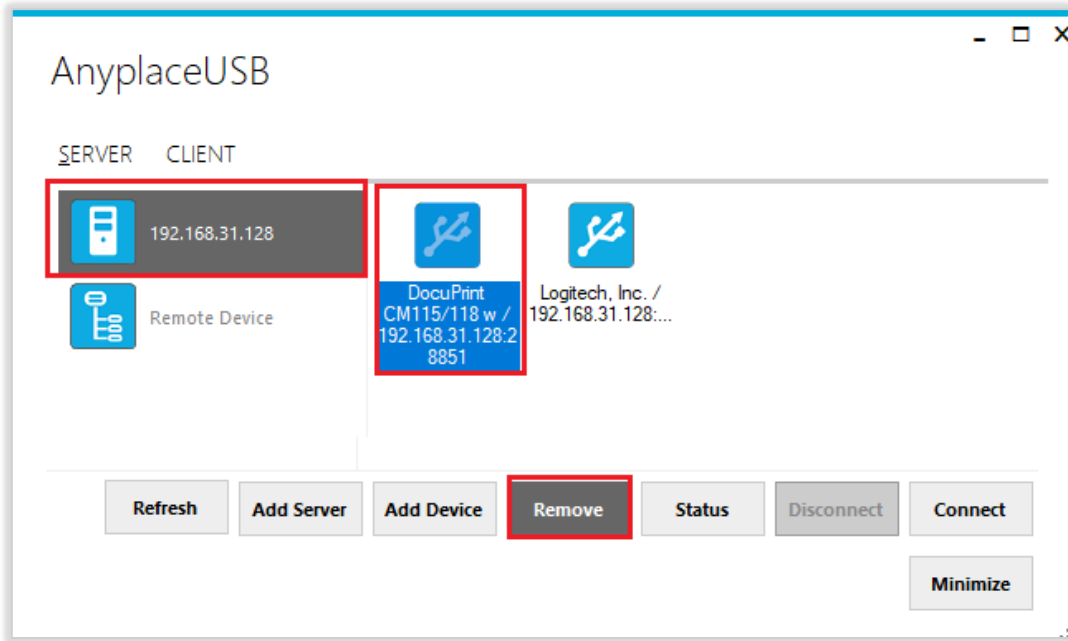


After connecting the “Unknown” USB device into your computer successfully, it will change to a remote shared USB device with device description, and the “Disconnect” button becomes available; the computer will install drivers for this remote shared USB device automatically. However, if your Windows OS doesn’t support the driver for this remote shared USB device, you need to install the driver manually.



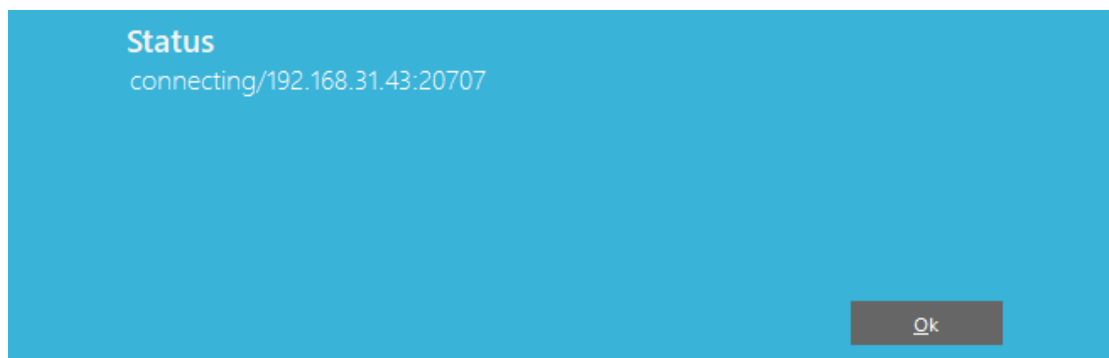
“Remove” Button

To remove a server computer or a remote shared USB device from your computer manually, select a server computer or a remote shared USB device and click “Remove”. You will see the server computer or remote shared USB device removed from your computer.

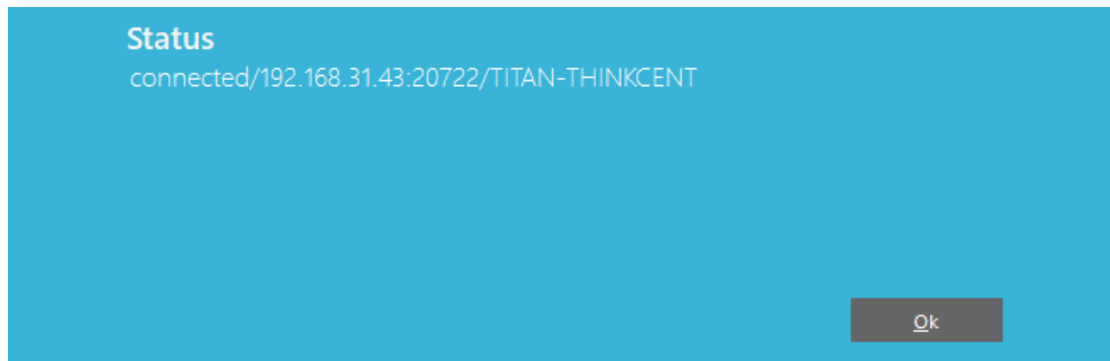


“Status” Button

Click the “**Get Status**” button to get the status of shared USB device. When this USB device is not being used by other users on the network, the status will show “connecting/192.168.31.43:20707(IP address and TCP port number of remote shared USB device)”.

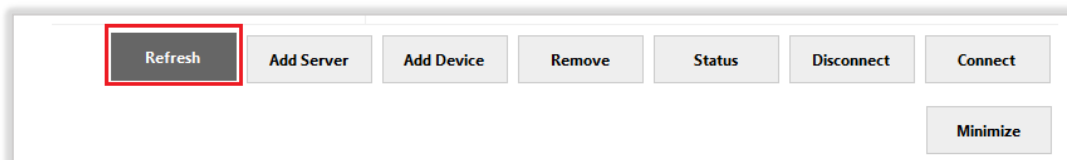


When this USB device is connected by other users on the network (Internet/LAN/WAN), it will show “connected/192.168.31.43:20722(IP address and TCP port number of remote shared USB device)/TITAN-THINKCENT (client computer name or IP address)”.



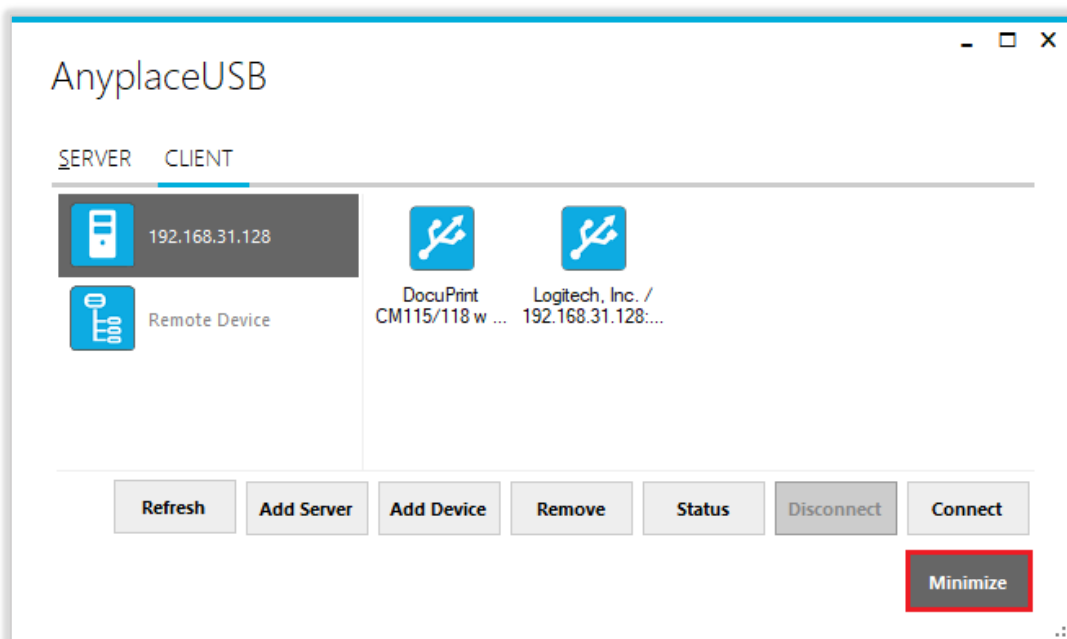
“Refresh” control button

The information on the main window of AnyplaceUSB software program may be incorrect or absent in some cases. In case this happens, you can click the “Refresh” button to reload the information for shared USB devices.

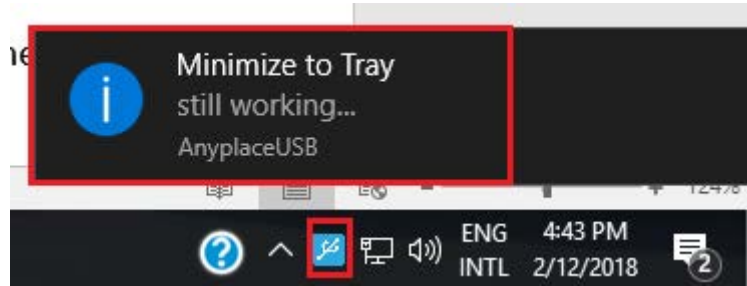


“Minimize” control button

You can click on the “Minimize” button to minimize the window of AnyplaceUSB software program to the system tray.



After clicking on “Minimize”, you will see “Minimize to Tray” message and the window of AnyplaceUSB software program will move to the system tray.



8. HOW TO SHARE USB DEVICES VIA INTERNET

AnyplaceUSB-H3 can share USB devices over the Internet, allowing you to use the shared USB devices anywhere in the world when connected to the Internet.

Sharing the USB Devices on Local Network First

To share a USB device via Internet, please first refer to page 15~20 and share your desired device on the local network. After sharing the USB devices on the local network, click on the shared USB device to check its TCP port number (For example, the shared USB device may show “FT231X USB UART/Shared-49666”. In this case, the number “49666” would be its TCP port number).



Checking the IP Address for Server Computer

To check the IP address of the server computer, you can execute the command “ipconfig” under “Command Prompt” for Windows OS. You can find its IP address under the section “IPv4 Address” (for example: 192.168.31.32)

```
Command Prompt
Microsoft Windows [Version 10.0.16299.192]
(c) 2017 Microsoft Corporation. All rights reserved.

C:\Users\TITAN test PC 1>ipconfig

Windows IP Configuration

Ethernet adapter Ethernet:

    Connection-specific DNS Suffix  . : 
    Link-local IPv6 Address . . . . . : fe80::e9c6:8987:b8f2:cc82%13
    IPv4 Address. . . . . : 192.168.31.32
    Subnet Mask . . . . . : 255.255.255.0
    Default Gateway . . . . . : 192.168.31.1

Tunnel adapter Teredo Tunneling Pseudo-Interface:

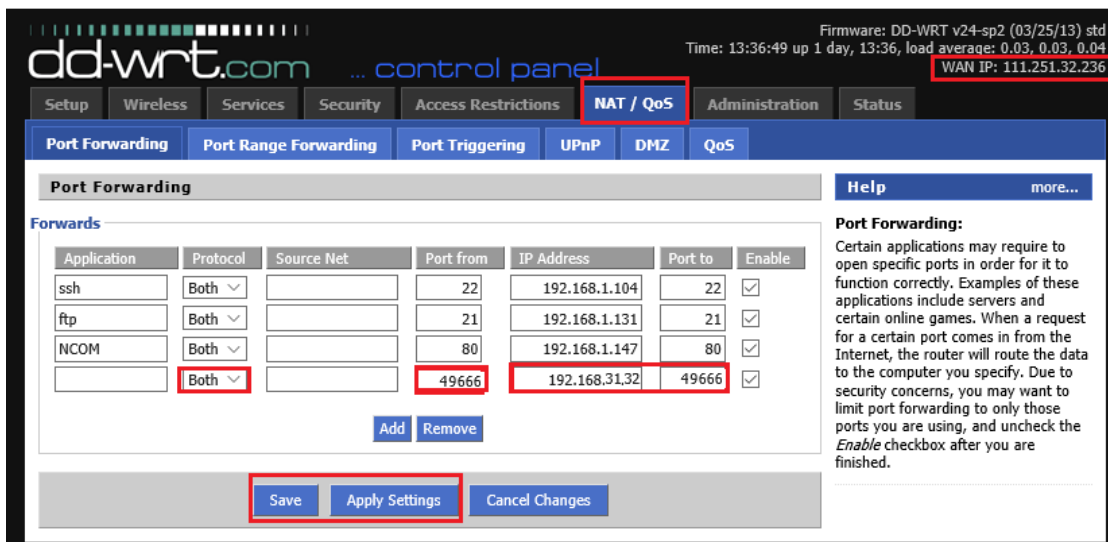
    Connection-specific DNS Suffix  . : 
    IPv6 Address. . . . . : 2001:0:9d38:90d7:1c9c:3230:8957:6b6d
    Link-local IPv6 Address . . . . . : fe80::1c9c:3230:8957:6b6d%10
    Default Gateway . . . . . : ::

C:\Users\TITAN test PC 1>
```

Port Forwarding to Shared USB Device

Port forwarding is a way to make a computer on your home or business network accessible to other computers on the internet, even though they are behind a router; Port forwarding needs to be set up in your router, and the method may differ depending on the brand and model of your router. Following is an example of the steps required for port forwarding:

1. Please login to your router.
2. Navigate to your router's port forwarding section by referring to its manual.
3. Create the port forward entries in your router. For example, in this case, the IP address of the server computer with the desired shared USB device is 192.168.31.32 and has a TCP port number of 49666. The router will have to be set up as shown in the figure below.



Firmware: DD-WRT v24-sp2 (03/25/13) std
Time: 13:36:49 up 1 day, 13:36, load average: 0.03, 0.03, 0.04
WAN IP: 111.251.32.236

dd-wrt.com ... control panel

Setup Wireless Services Security Access Restrictions **NAT / QoS** Administration Status

Port Forwarding Port Range Forwarding Port Triggering UPnP DMZ QoS

Port Forwarding Help more...

Forwards

Application	Protocol	Source Net	Port from	IP Address	Port to	Enable
ssh	Both		22	192.168.1.104	22	<input checked="" type="checkbox"/>
ftp	Both		21	192.168.1.131	21	<input checked="" type="checkbox"/>
NCOM	Both		80	192.168.1.147	80	<input checked="" type="checkbox"/>
	Both		49666	192.168.31.32	49666	<input checked="" type="checkbox"/>

Add Remove

Save Apply Settings Cancel Changes

Port Forwarding:
Certain applications may require to open specific ports in order for it to function correctly. Examples of these applications include servers and certain online games. When a request for a certain port comes in from the Internet, the router will route the data to the computer you specify. Due to security concerns, you may want to limit port forwarding to only those ports you are using, and uncheck the *Enable* checkbox after you are finished.

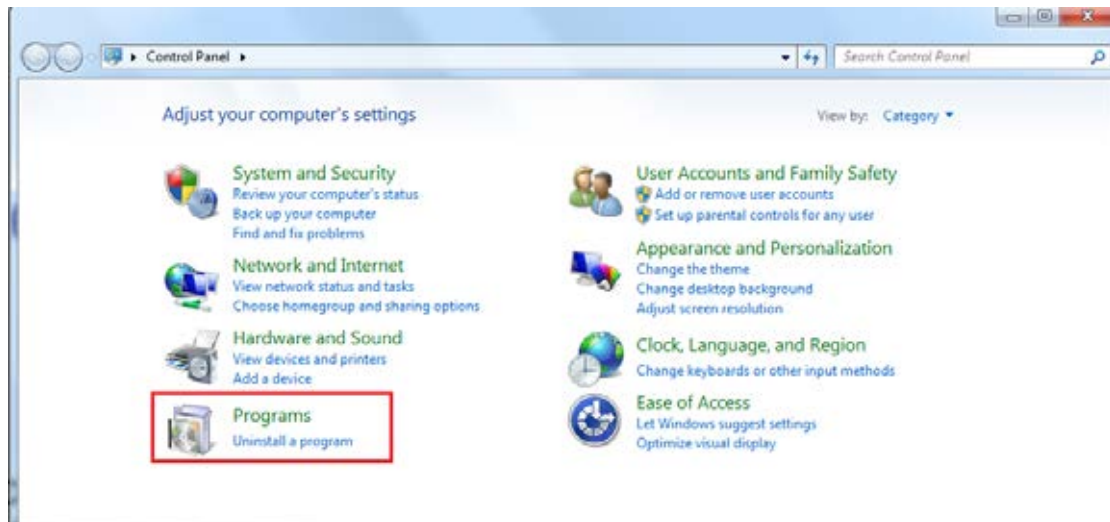
After you enter the IP address and TCP port number for port forwarding, don't forget to apply the setting and save it. You must also remember the router IP address (for example, in this case, the IP is shown on the top right corner as WAN IP: 111.251.32.236)

After port forwarding, you can use "Add Device" (refer to page 31) to test that your port forwarding rules are set up correctly. Click "Add Device" and enter the router's IP address and the TCP port number of remote shared USB device. Click "OK" to finish adding a remote shared USB device to your computer.

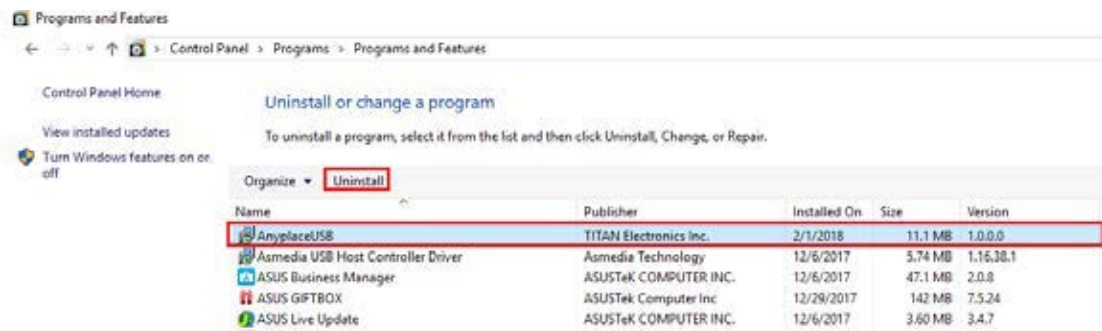
9. AnyplaceUSB SOFTWARE UNINSTALLATION

Uninstalling AnyplaceUSB Software Program

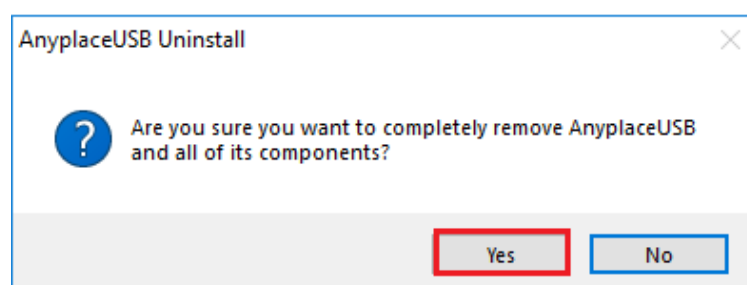
To uninstall AnyplaceUSB software program, click the "Start" button and navigate to "Control Panel". Choose "Uninstall a program" under "Programs".



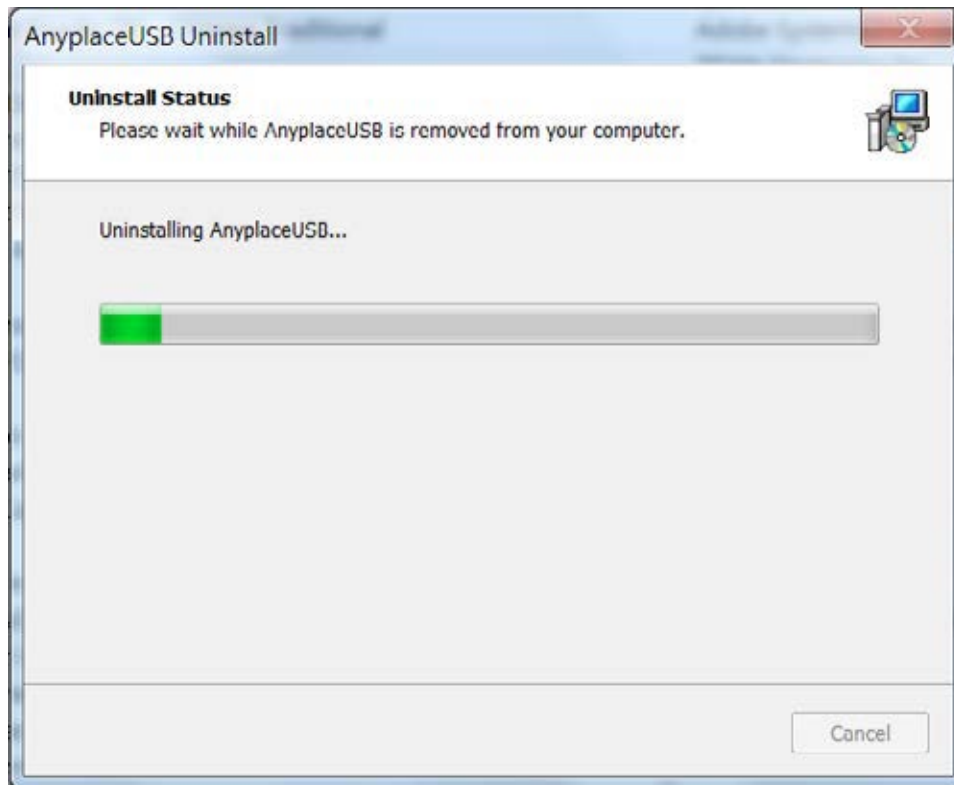
After you click "Uninstall a program", a list of all your installed programs will be shown. Select "AnyplaceUSB" and click on "Uninstall" to uninstall AnyplaceUSB software program.



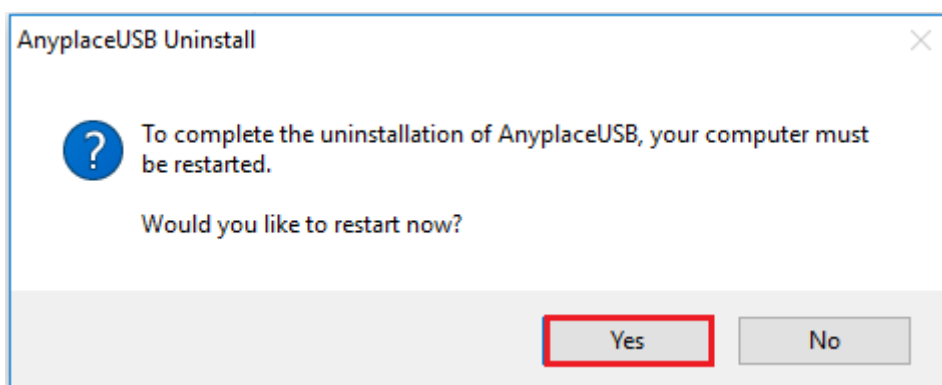
When you click on "Uninstall", a message will ask "Are you sure you want to completely remove AnyplaceUSB and all of its components?". Confirm by clicking "Yes".



When uninstalling AnyplaceUSB software program, you will find the following message.



After successfully removing AnyplaceUSB software program, a message stating that "To complete the uninstallation of AnyplaceUSB, your computer must be restarted." will be shown.



Click on "Yes" to restart your computer to finish removing AnyplaceUSB software program.