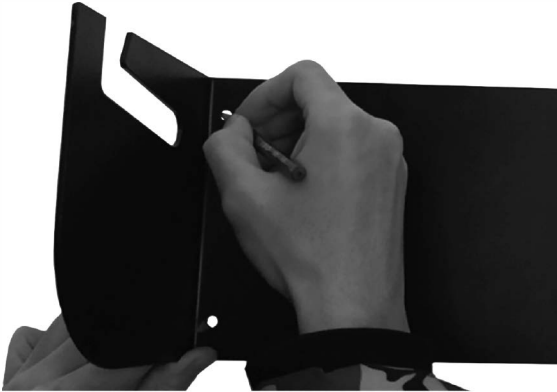


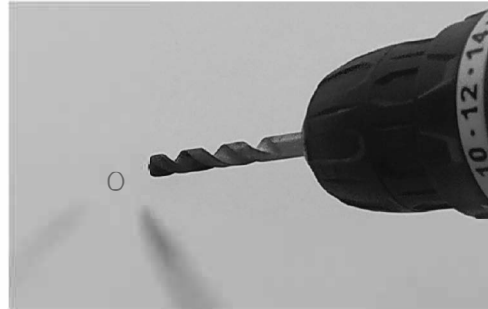
### Step 1

While holding the dispenser against the wall, use a level to ensure the dispenser is straight. Then use a pencil to mark the dispenser holes on the wall.



### Step 2

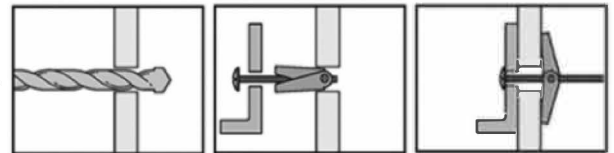
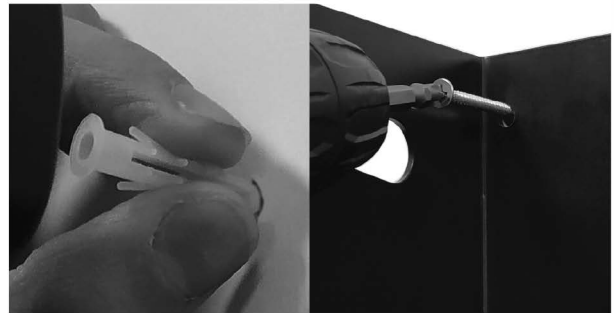
Using power drill and 1/4" size drill bit, drill holes in the wall through the pencil marks.



### Step 3

For wood wall installation use the 4 wood screws and 4 wall anchors. **(NOTE – for wood stud installation the wall anchors may not be needed)**. Push anchors through the drilled holes and lightly tap with a hammer. Use Phillips head screw driver or power drill to mount wall mount frame to wall.

For drywall installation we recommend using the included toggle bolts.



### Step 4

Slide the roll of Kraft paper over the metal dowel and place on wall mount bracket. Note that each end of the metal dowel does unscrew if you need to widen the track to slide into the wall mount bracket.



### Step 5

Using 2 Wood Screws/Wall Anchors/Toggle bolts install the cut bar at your desired distance below the wall mount bracket (see above). Make sure the grooved part of the cut bar faces down.

